
INFECTIOUS DISEASES WEEKLY REPORT

TOKYO IDWR

Tokyo Metropolitan Infectious Disease Surveillance Center

20 December 2007 / Number 50

Surveillance System in Tokyo, Japan

The infectious diseases which all physicians must report

All physicians must report to health centers the incidence of the diseases which are shown at page one. Health centers electronically report the individual cases to Tokyo Metropolitan Infectious Disease Surveillance Center.

The infectious diseases required to be reported by the sentinels

The numbers of patients who visit the sentinel clinics or hospitals during a week are reported to health centers in Tokyo. And they electronically report the numbers to Tokyo Metropolitan Infectious Disease Surveillance Center. We have about 400 sentinel clinics and hospitals in Tokyo.

1st Week is early January and 52nd Week is end of December.

Tokyo Metropolitan Institute of Public Health
Epidemiological Information Office

TEL:81-3-3363-3213 FAX:81-3-5332-7365

e-mail:idsc@tokyo-eiken.go.jp

URL:idsc.tokyo-eiken.go.jp/

Number of patients with the diseases which all physicians must report

Category	Diseases	Tokyo					Japan	
		47th	48th	49th	50th	Cum 2007	50th	Cum 2007
I	Ebola hemorrhagic fever							
	Crimean-Congo hemorrhagic fever							
	Smallpox							
	South American hemorrhagic fever							
	Plague							
	Marburg disease							
	Lassa fever							
II	Acute poliomyelitis							
	Tuberculosis	60	73	66	59	2822	269	18525
	Diphtheria							
	Severe Acute Respiratory Syndrome(SARS)							
III	Cholera					2		12
	Shigellosis		2	4		83	1	438
	Enterohemorrhagic Escherichia coli infection	10	9	4	2	472	27	4544
	Typhoid fever					11	2	47
	Paratyphoid fever		1			7		20
IV	Hepatitis E					3		52
	West Nile fever							
	Hepatitis A			1	1	19	1	149
	Echinococcosis					3		16
	Yellow fever							
	Psittacosis					1	1	30
	Omsk hemorrhagic fever							
	Relapsing fever							
	Kyasanur forest disease							
	Q fever					1	1	6
	Rabies							
	Coccidioidomycosis					2		3
	Monkeypox							
	Hemorrhagic fever with renal syndrome							
	Western equine encephalitis							
	Tick-borne encephalitis							
	Anthrax							
	Scrub typhus(Tsutsugamushi disease)	1	4	3	1	12	20	304
	Dengue fever			1		23	2	88
	Eastern equine encephalitis							
	Avian influenza virus infection							
	Nipah virus infection							
	Japanese spotted fever							89
	Japanese encephalitis							8
	Epidemic typhus							
	Hantavirus pulmonary syndrome							
	Herpes B virus infection							
	Glanders							
	Brucellosis							1
	Venezuelan equine encephalitis							
	Hendra virus infection							
	Botulism							3
Malaria					22	1	50	
Tularemia								
Lyme disease					3	1	11	
Lyssavirus infection(excluding rabies)								
Rift valley fever								
Melioidosis								
Legionellosis	2	1	1	1	53	9	631	
Leptospirosis					3		32	
Rocky mountain spotted fever								

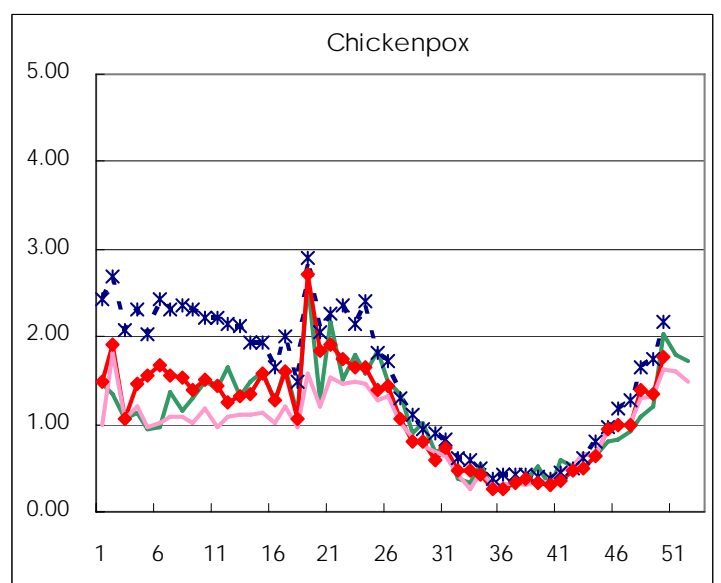
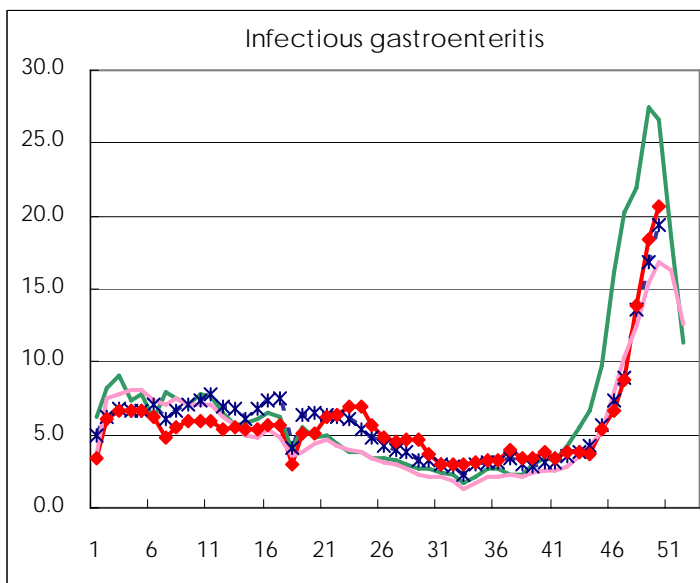
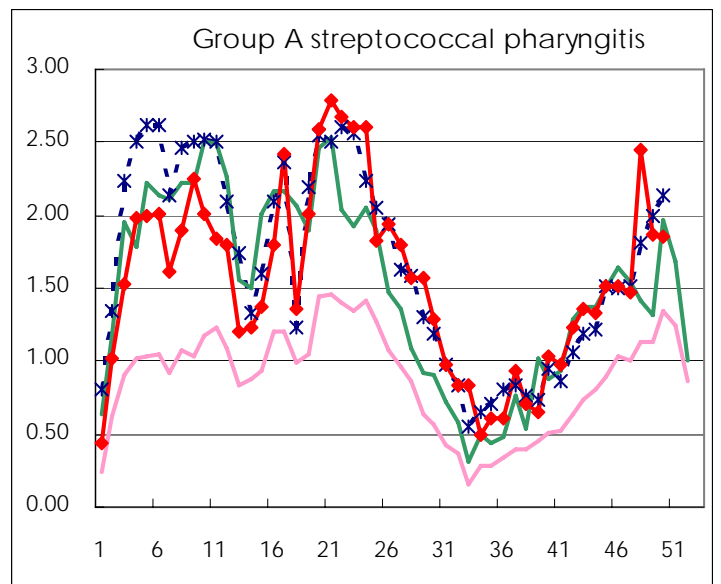
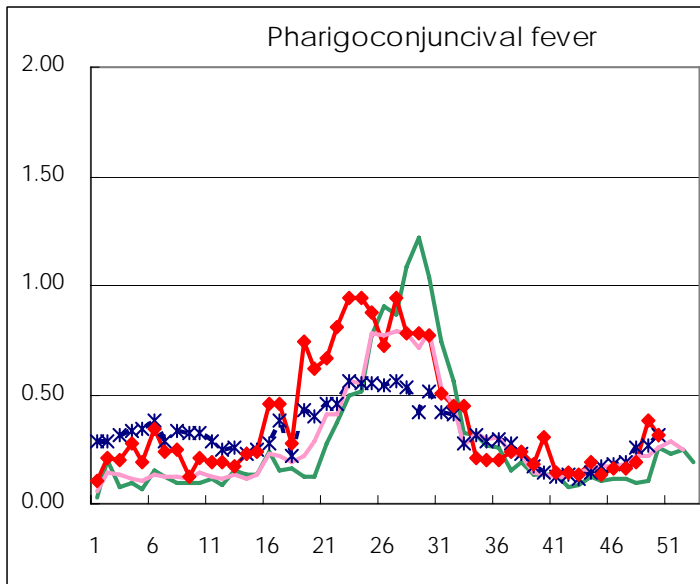
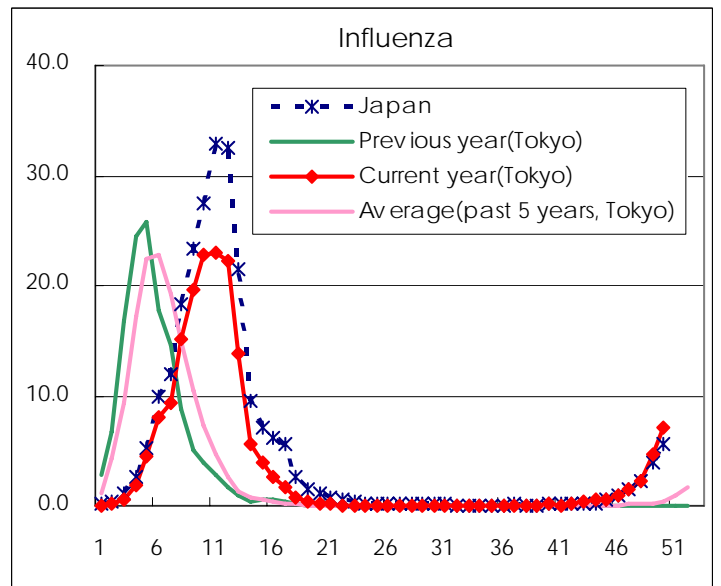
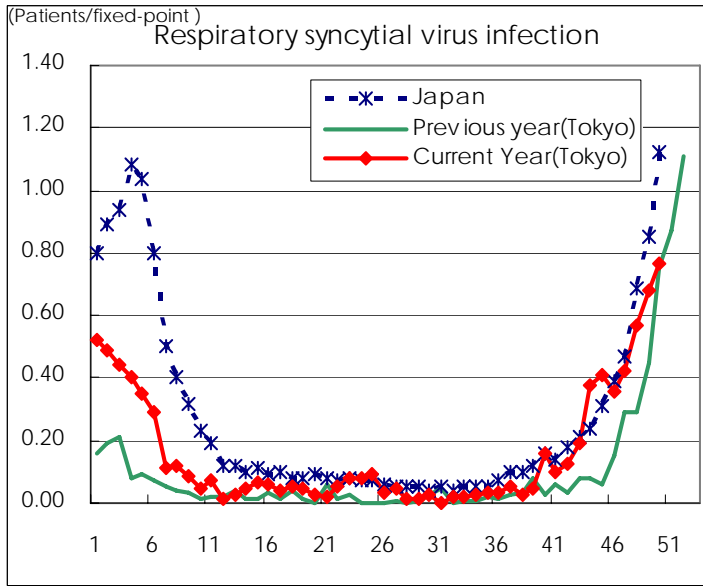
Category	Diseases	Tokyo				Japan		
		47th	48th	49th	50th	Cum 2007	50th	Cum 2007
V	Amebiasis	1	3	2	2	162	7	753
	Viral hepatitis(excluding hepatitis A and E)	1		3		39		225
	Acute encephalitis(excluding JE and WNE)	1			1	19	1	211
	Cryptosporidiosis					1		6
	Creutzfeldt-Jakob disease		2			15	4	139
	Severe invasive streptococcal infections(TSLS)					6	1	93
	Acquired immunodeficiency syndrome (AIDS)	6	8	16	11	496	11	1403
	Giardiasis			1	1	17		51
	Meningococcal meningitis	1				3	1	17
	Congenital rubella syndrome							
	Syphilis	1	2	5	4	157	9	684
	Tetanus					1		87
	Vancomycin-resistant S. aureus infection							
	Vancomycin-resistant Enterococcus infection		1		2	17	2	77
designated	Influenza (H5N1)							

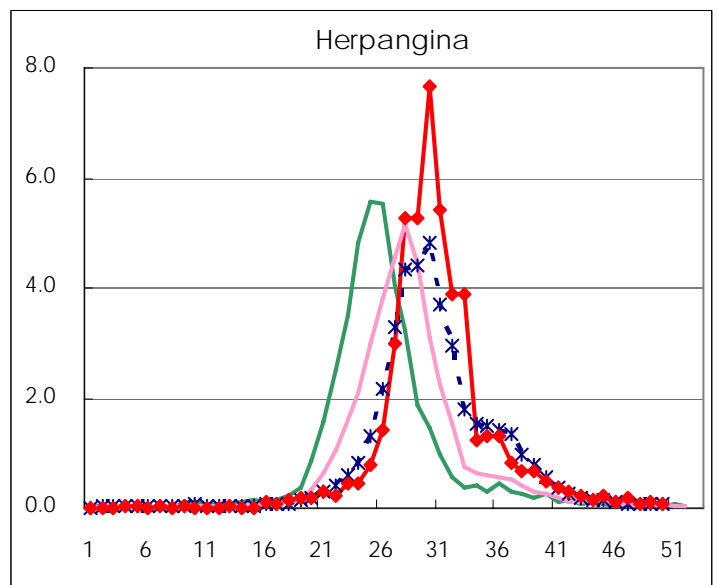
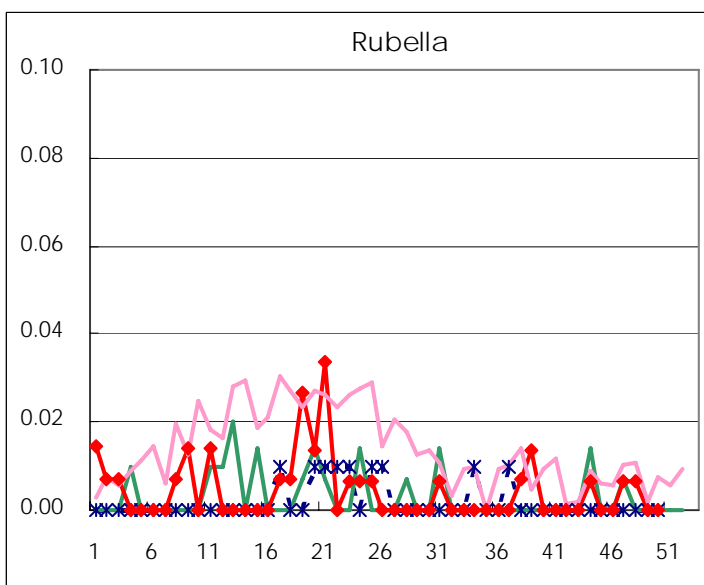
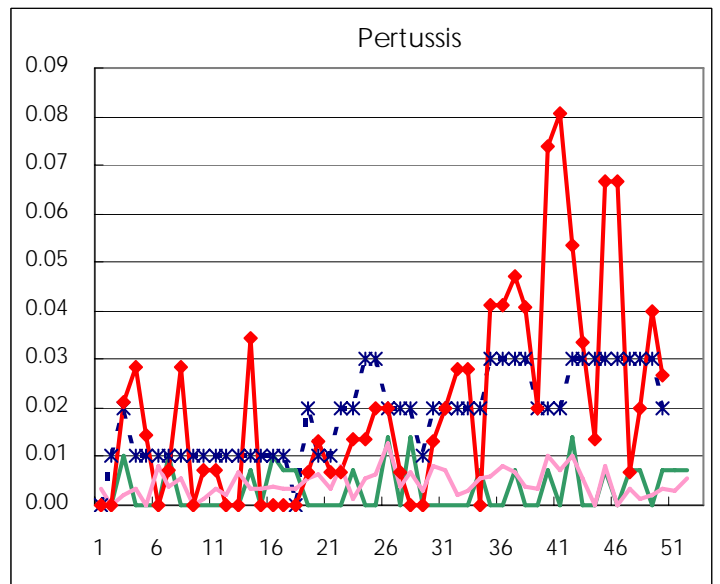
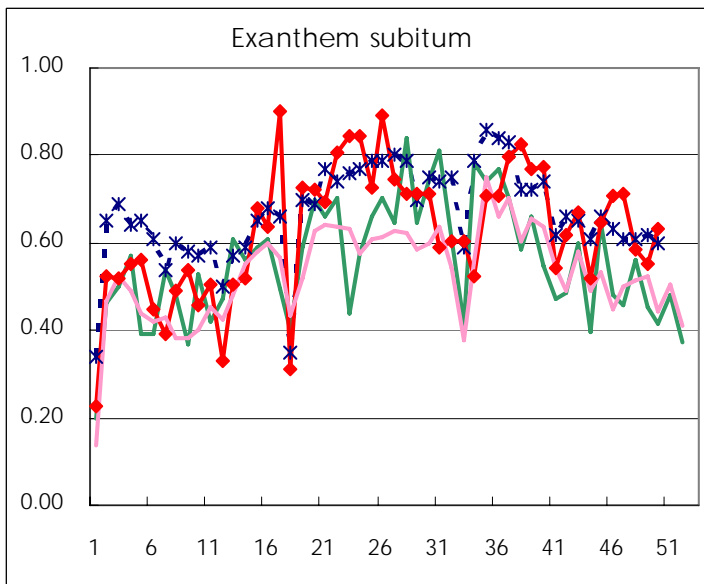
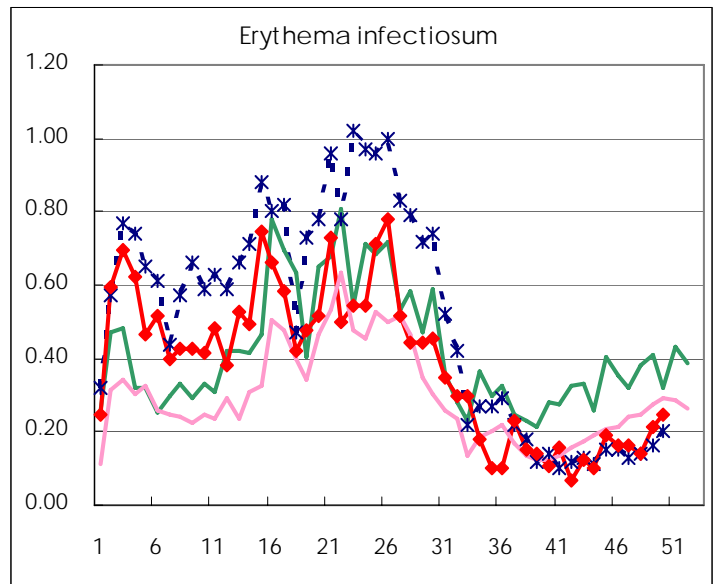
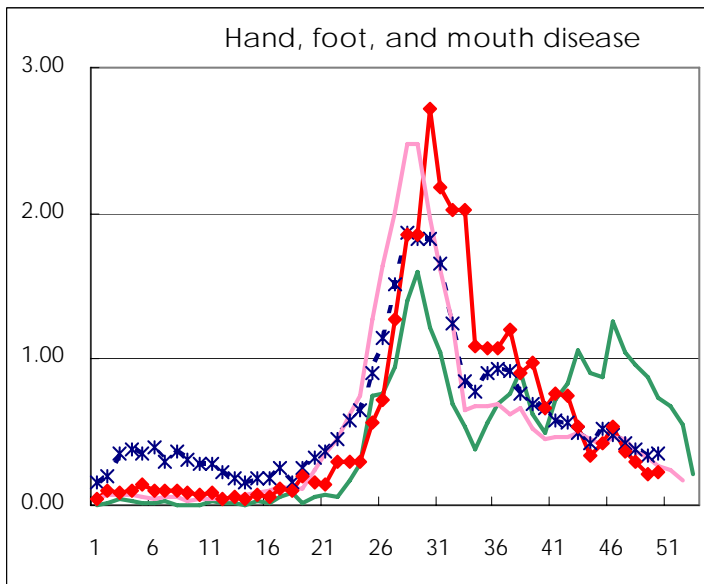
Number of patients with the diseases to be reported
by the designated clinics and hospitals

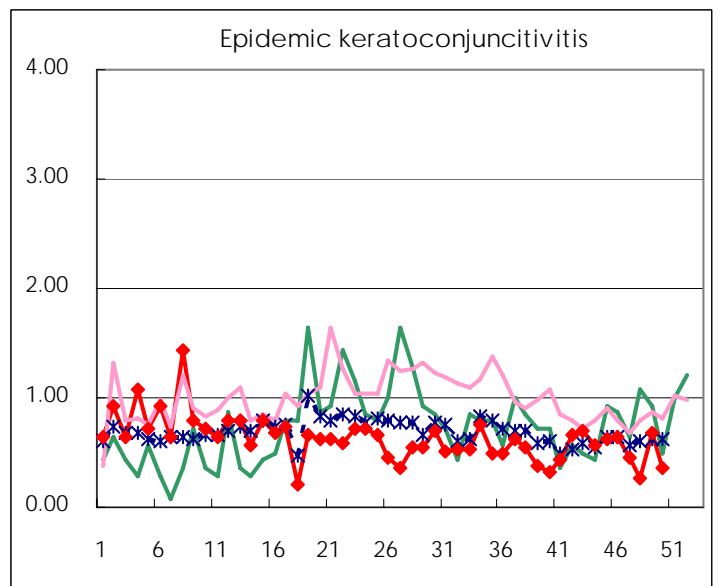
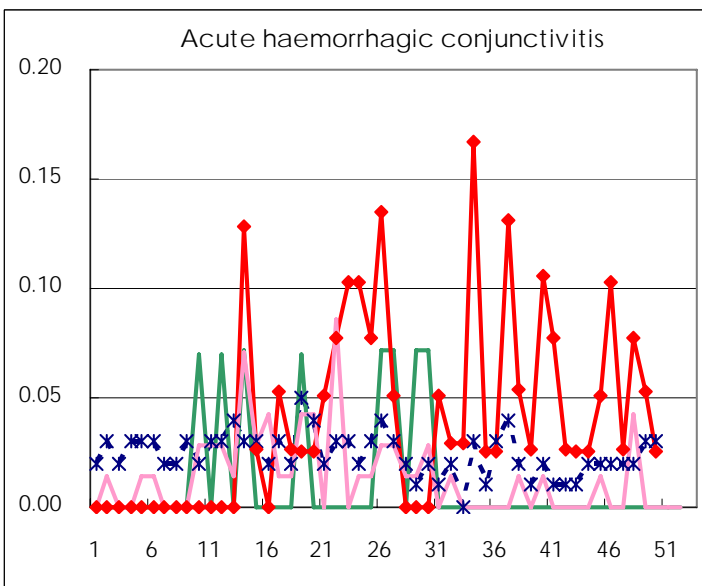
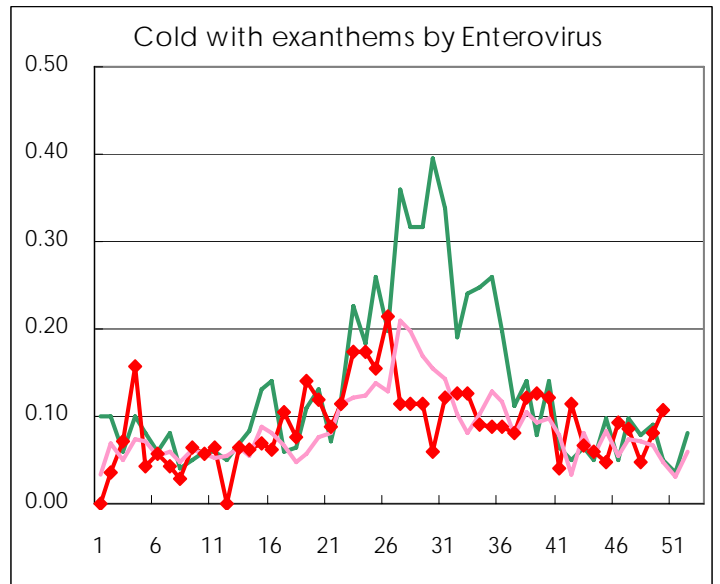
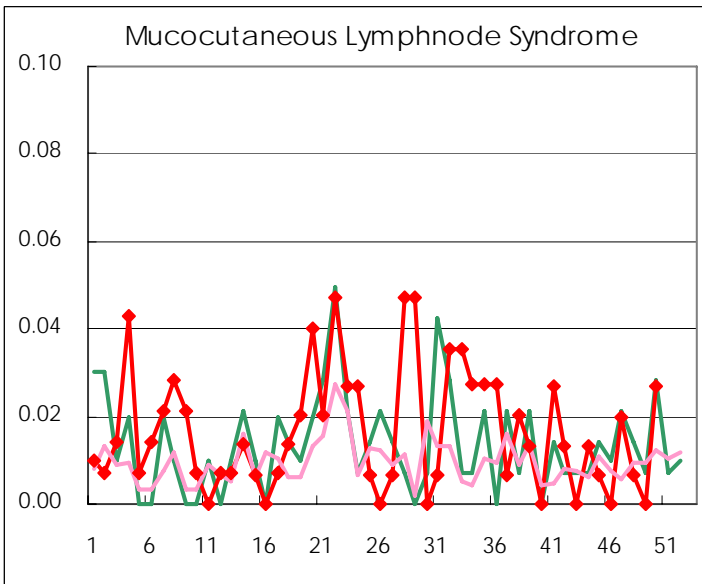
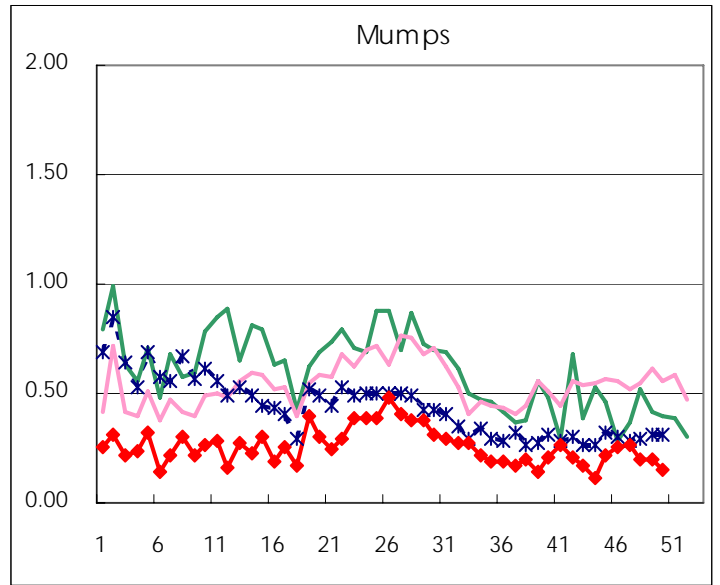
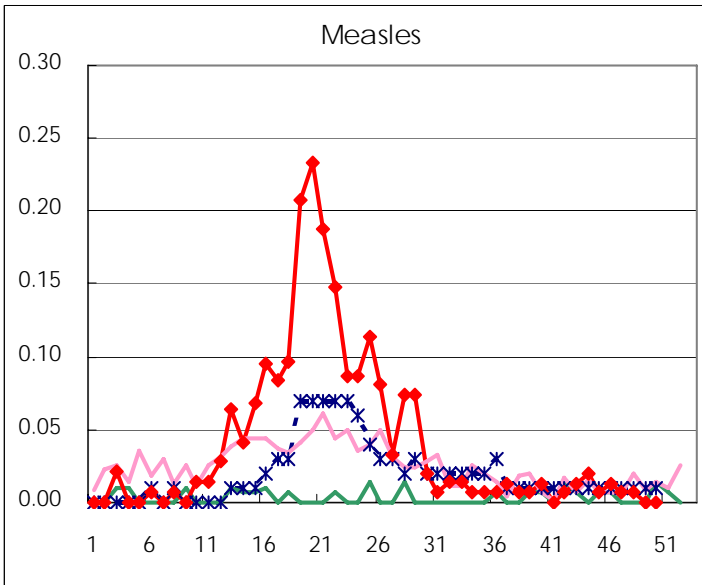
Diseases	2007				4wks total	Cum 2007
	47th	48th	49th	50th		
Respiratory syncytial virus infection	63	85	102	115	365	1194
Influenza	416	651	1,362	2,048	4,477	49167
Pharyngoconjunctival fever	25	28	57	47	157	2707
Group A streptococcal pharyngitis	220	364	280	279	1,143	11385
Infectious gastroenteritis	1,313	2,070	2,755	3,108	9,246	41580
Chickenpox	149	206	200	267	822	8355
Hand, foot, and mouth disease	56	45	31	35	167	4327
Erythema infectiosum	24	21	32	37	114	2820
Exanthem subitum	107	87	83	95	372	4556
Pertussis	1	3	6	4	14	142
Rubella	1	1			2	34
Herpangina	29	12	16	13	70	6792
Measles	1	1			2	302
Mumps	40	29	30	22	121	1868
Cold with exanthems by Enterovirus	13	7	12	16	48	649
Mucocutaneous Lymphnode Syndrome	3	1		4	8	107
Acute hemorrhagic conjunctivitis	1	3	2	1	7	79
Epidemic keratoconjunctivitis	17	10	26	14	67	924
Bacterial meningitis	1	1	2	2	6	33
Aseptic meningitis				1	1	51
Mycoplasma pneumonia	7	13	10	13	43	224
Chlamydial pneumonia (excluding psittacosis)	1			2	3	21
Measles in adults	1			2	3	260

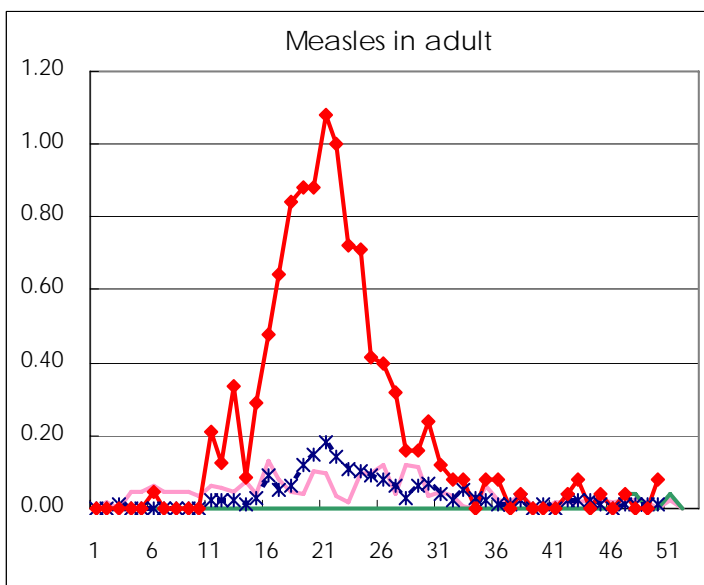
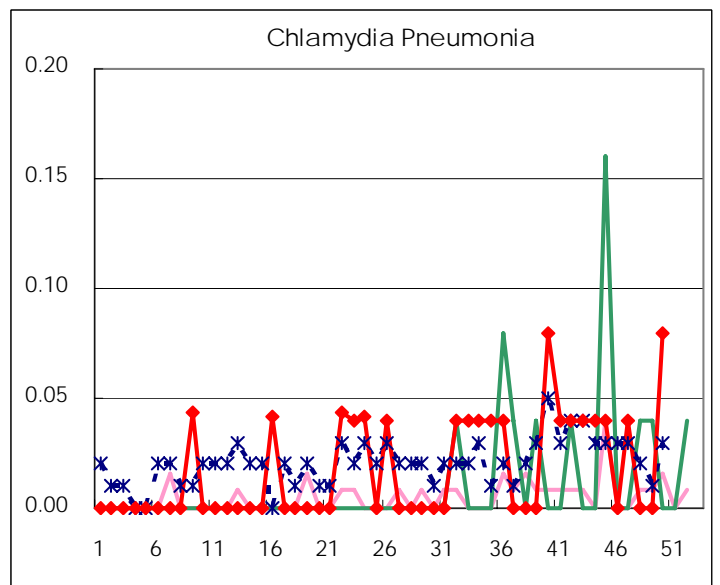
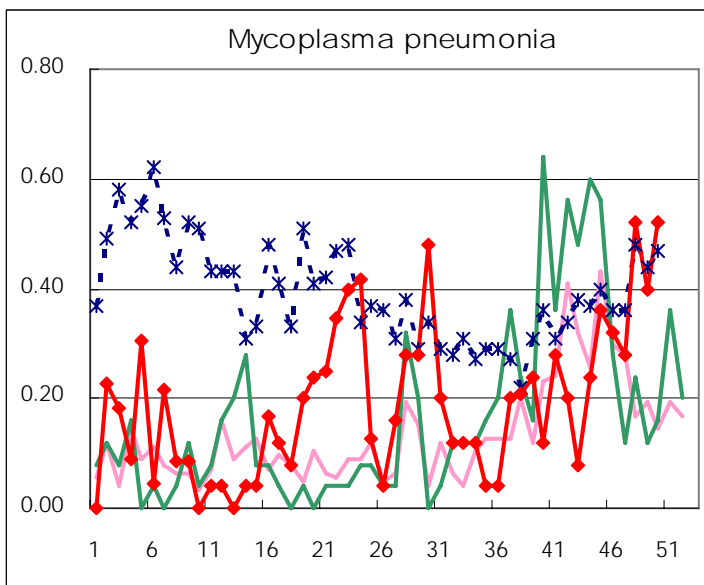
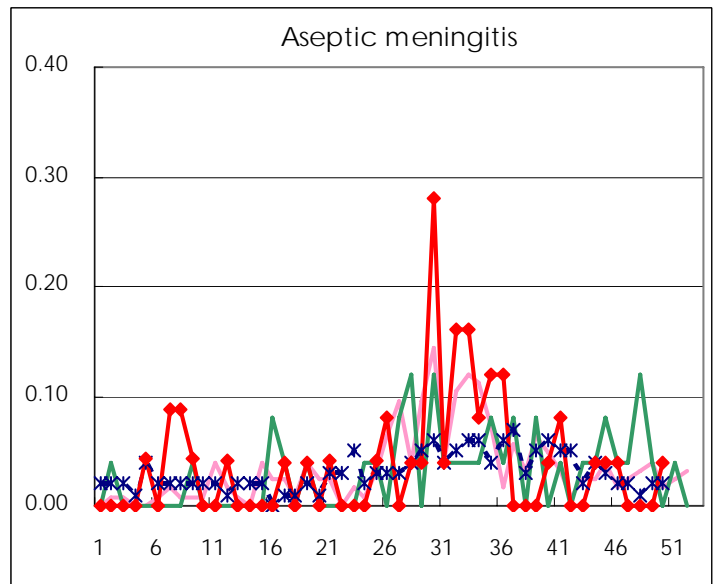
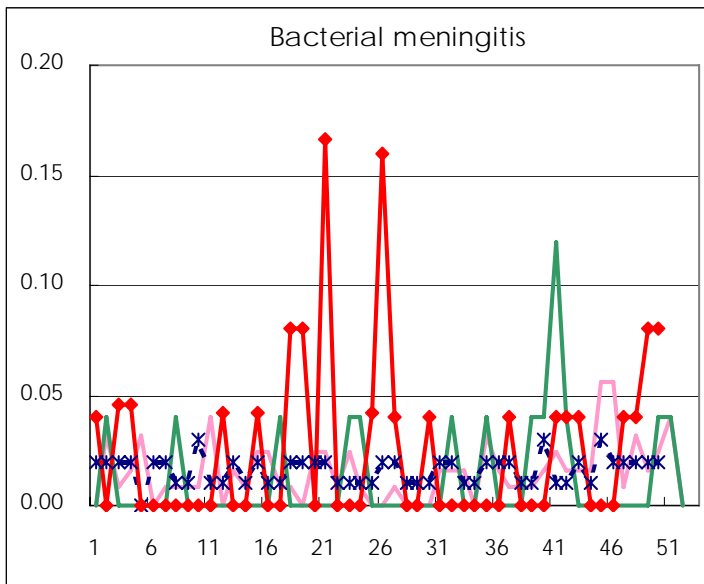
(Blank means 0.)

Disease Trend Graph (weekly reported cases per fixed-point in comparison)









Number of sentinel facilities for weekly reporting		
Types of sentinels	Number of sentinels	Sentinels having reported
Pediatric	150	150
Influenza	290	289
Ophthalmic	39	39
Specially-designated	25	25

Tokyo Metropolitan Government
Infectious Disease Surveillance Center