

---

INFECTIOUS DISEASES WEEKLY REPORT

# TOKYO IDWR

Tokyo Metropolitan Infectious Disease Surveillance Center

## 27 December 2007 / Number 51

### Surveillance System in Tokyo, Japan

The infectious diseases which all physicians must report

All physicians must report to health centers the incidence of the diseases which are shown at page one. Health centers electronically report the individual cases to Tokyo Metropolitan Infectious Disease Surveillance Center.

The infectious diseases required to be reported by the sentinels

The numbers of patients who visit the sentinel clinics or hospitals during a week are reported to health centers in Tokyo. And they electronically report the numbers to Tokyo Metropolitan Infectious Disease Surveillance Center. We have about 400 sentinel clinics and hospitals in Tokyo.

1st Week is early January and 52nd Week is end of December.

Tokyo Metropolitan Institute of Public Health  
Epidemiological Information Office

TEL:81-3-3363-3213 FAX:81-3-5332-7365

e-mail:[idsc@tokyo-eiken.go.jp](mailto:idsc@tokyo-eiken.go.jp)

URL:[idsc.tokyo-eiken.go.jp/](http://idsc.tokyo-eiken.go.jp/)

---

## Number of patients with the diseases which all physicians must report

Category	Diseases	Tokyo				Japan		
		48th	49th	50th	51th	Cum 2007	51th	Cum 2007
I	Ebola hemorrhagic fever							
	Crimean-Congo hemorrhagic fever							
	Smallpox							
	South American hemorrhagic fever							
	Plague							
	Marburg disease							
	Lassa fever							
II	Acute poliomyelitis							
	Tuberculosis	74	67	63	71	2914	299	19331
	Diphtheria							
	Severe Acute Respiratory Syndrome(SARS)							
III	Cholera					2		12
	Shigellosis	2	4		2	85	5	445
	Enterohemorrhagic Escherichia coli infection	9	4	2	2	474	15	4566
	Typhoid fever					11		47
	Paratyphoid fever	1				7		20
IV	Hepatitis E					3		53
	West Nile fever							
	Hepatitis A		1	1		19		151
	Echinococcosis					3		16
	Yellow fever							
	Psittacosis					1		30
	Omsk hemorrhagic fever							
	Relapsing fever							
	Kyasanur forest disease							
	Q fever					1		7
	Rabies							
	Coccidioidomycosis					2		3
	Monkeypox							
	Hemorrhagic fever with renal syndrome							
	Western equine encephalitis							
	Tick-borne encephalitis							
	Anthrax							
	Scrub typhus(Tsutsugamushi disease)	4	3	1	1	13	15	328
	Dengue fever		1			23		87
	Eastern equine encephalitis							
	Avian influenza virus infection							
	Nipah virus infection							
	Japanese spotted fever						4	93
	Japanese encephalitis						1	10
	Epidemic typhus							
	Hantavirus pulmonary syndrome							
	Herpes B virus infection							
	Glanders							
	Brucellosis							1
	Venezuelan equine encephalitis							
	Hendra virus infection							
	Botulism							3
Malaria					1	23	1	51
Tularemia								
Lyme disease						3		11
Lyssavirus infection(excluding rabies)								
Rift valley fever								
Melioidosis								
Legionellosis	1	1	1		53	10	643	
Leptospirosis					3		32	
Rocky mountain spotted fever								

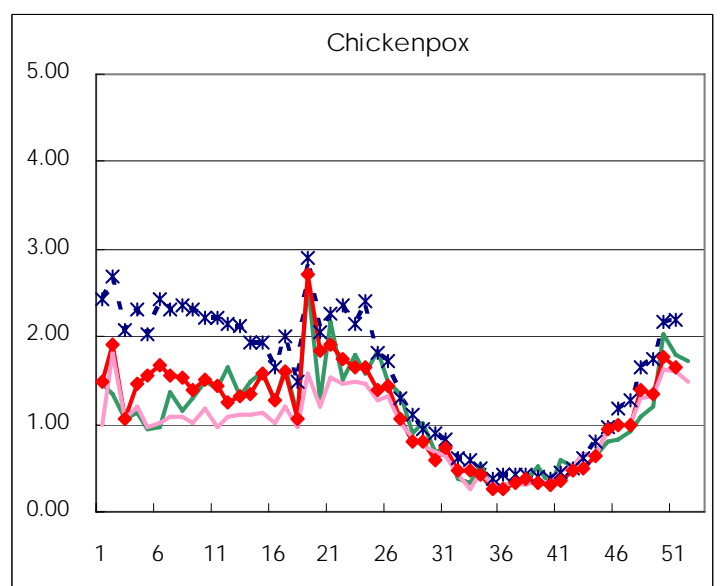
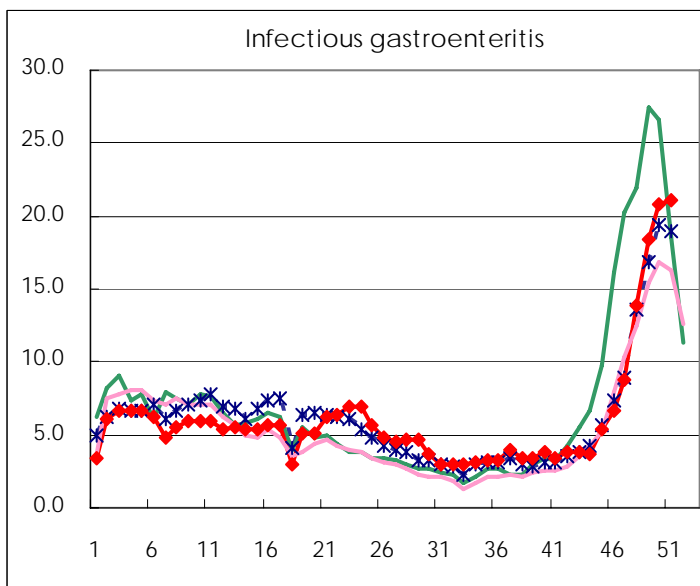
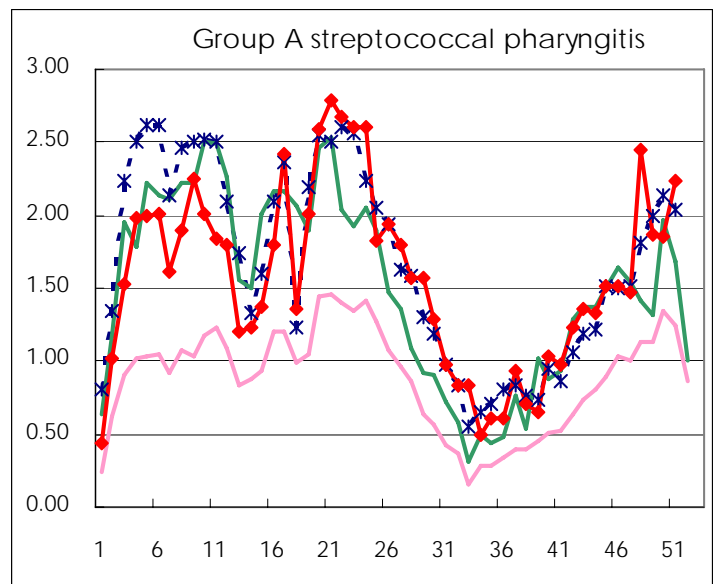
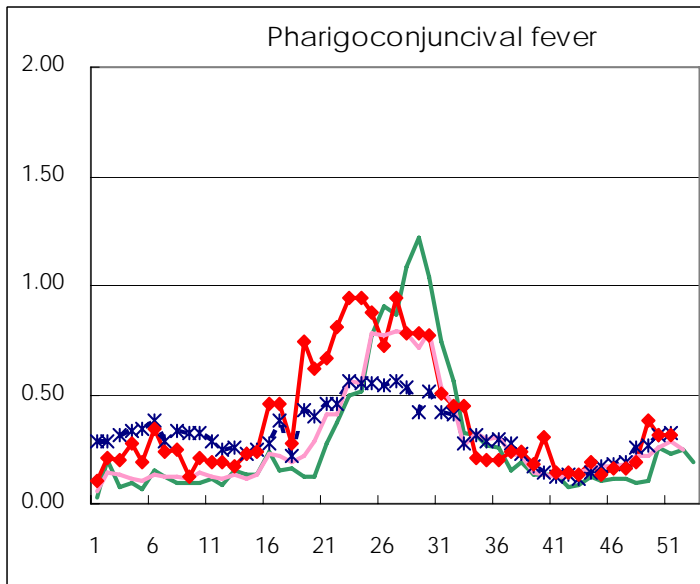
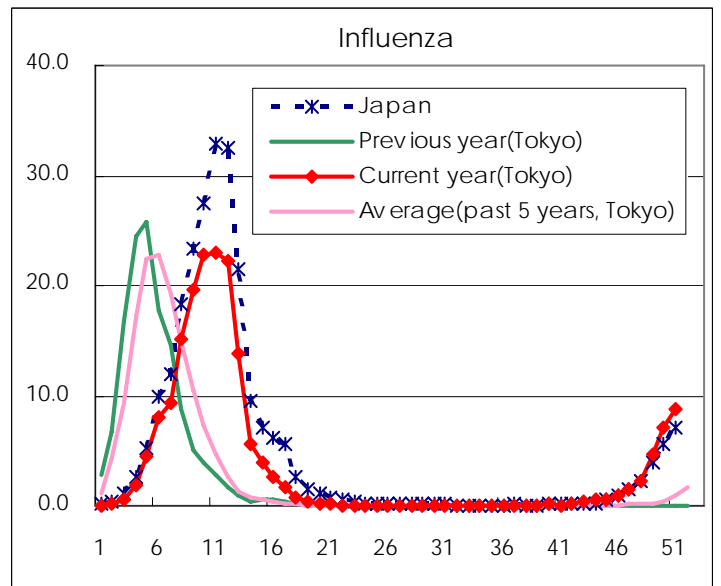
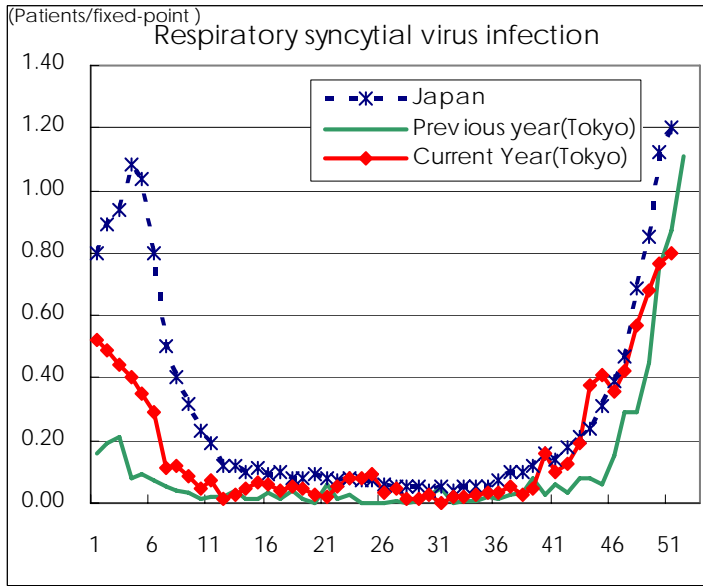
Category	Diseases	Tokyo				Japan		
		48th	49th	50th	51th	Cum 2007	51th	Cum 2007
V	Amebiasis	3	2	2		162	6	763
	Viral hepatitis(excluding hepatitis A and E)		3		1	40	3	228
	Acute encephalitis(excluding JE and WNE)			1		19		213
	Cryptosporidiosis					1		6
	Creutzfeldt-Jakob disease	2				15	2	143
	Severe invasive streptococcal infections(TSLS)					6	1	94
	Acquired immunodeficiency syndrome (AIDS)	8	16	11	14	510	12	1425
	Giardiasis		1	1		17	1	53
	Meningococcal meningitis					3		16
	Congenital rubella syndrome							
	Syphilis	2	5	4	1	158	5	698
	Tetanus					1		87
	Vancomycin-resistant S. aureus infection							
	Vancomycin-resistant Enterococcus infection	1		2		17	1	79
designated	Influenza (H5N1)							

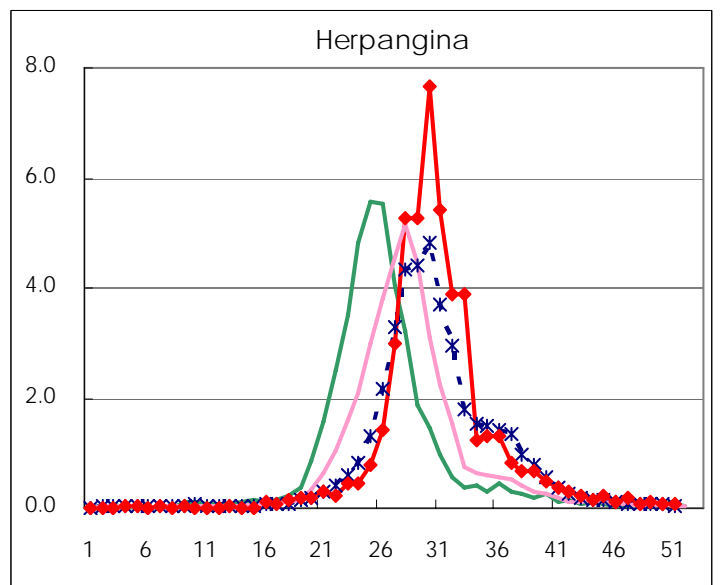
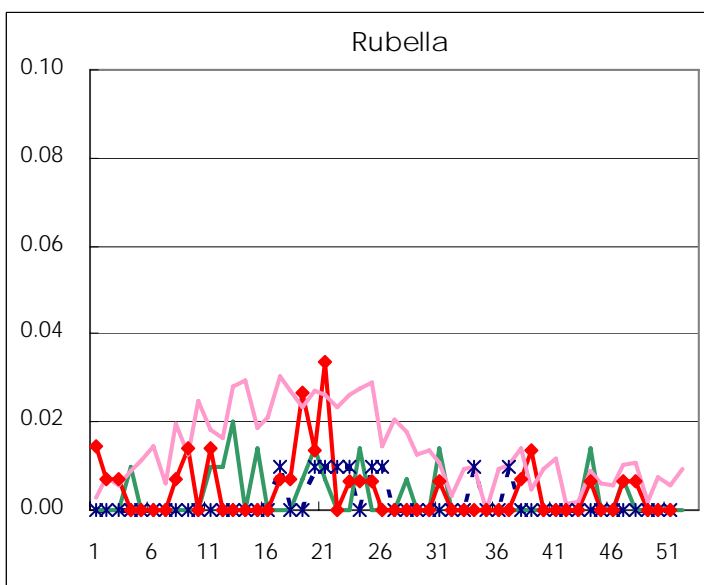
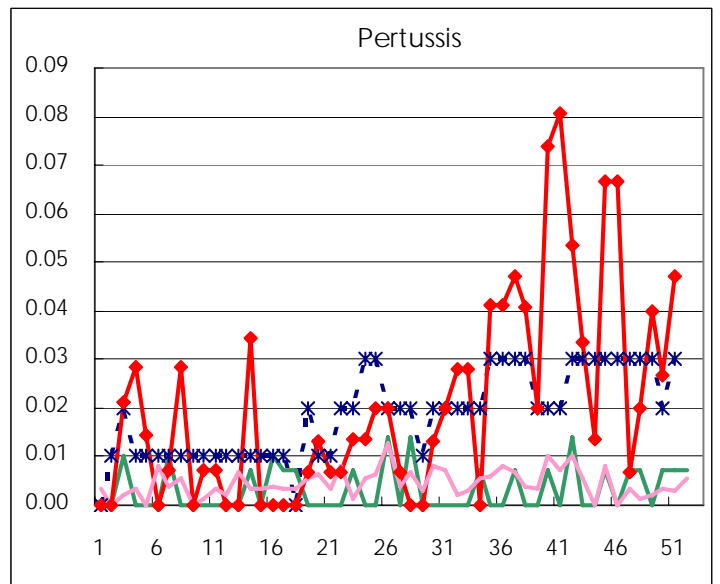
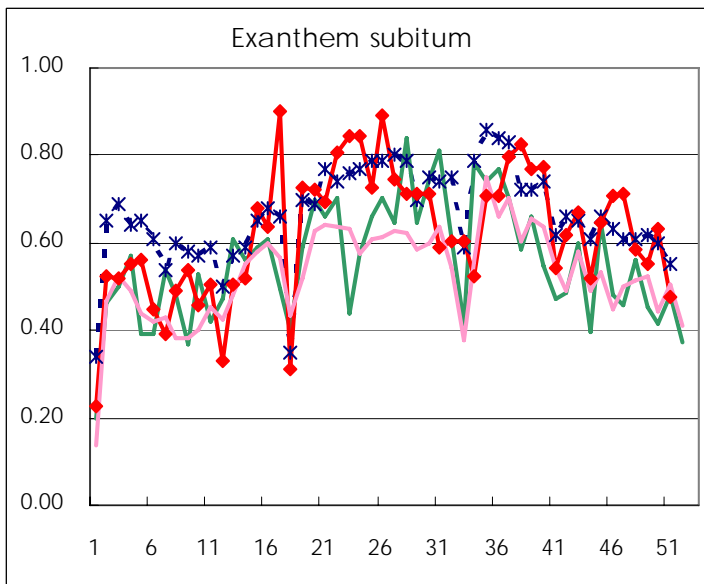
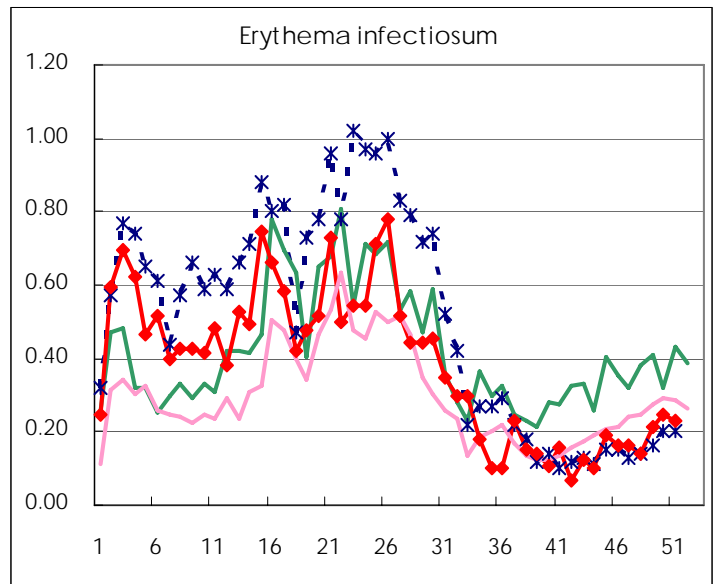
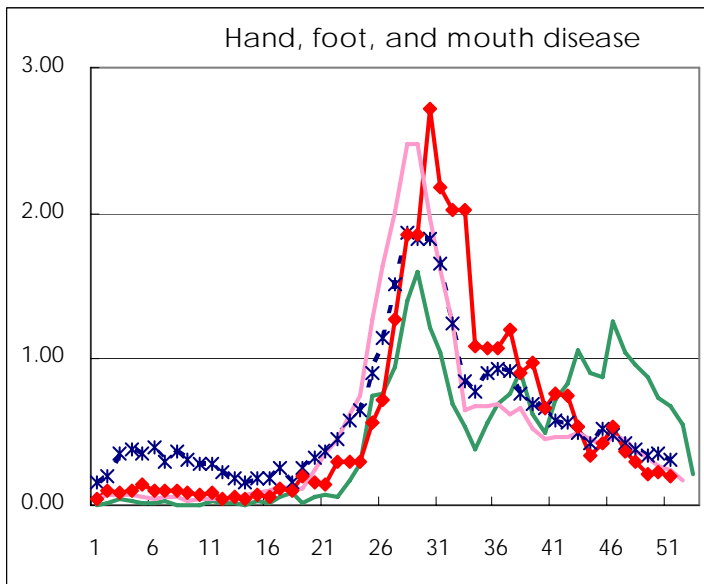
Number of patients with the diseases to be reported  
by the designated clinics and hospitals

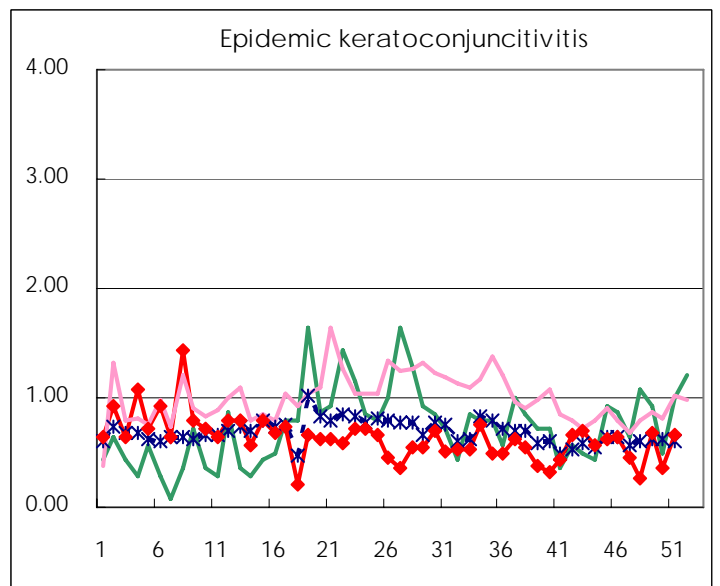
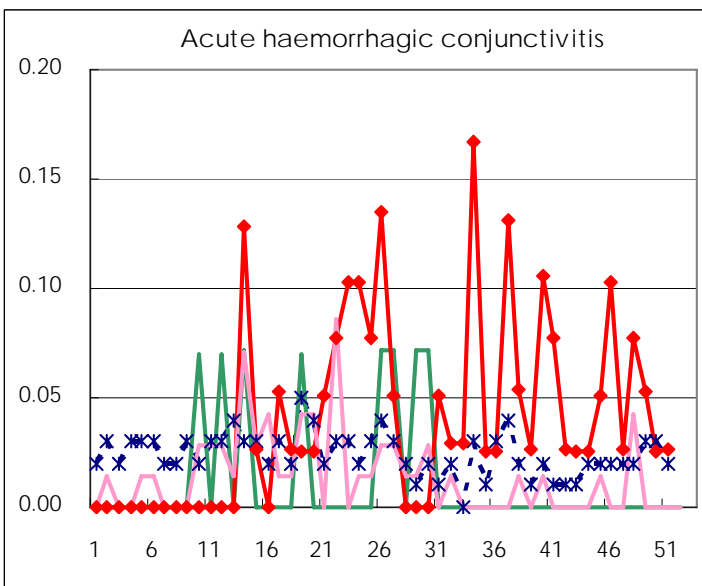
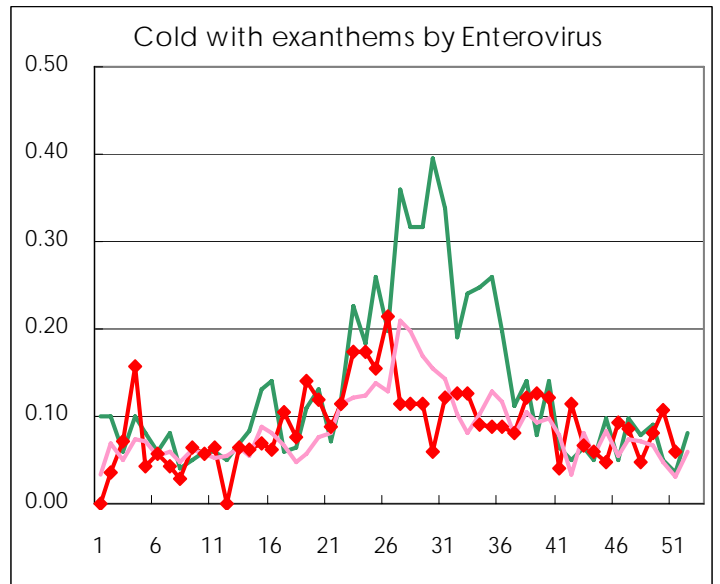
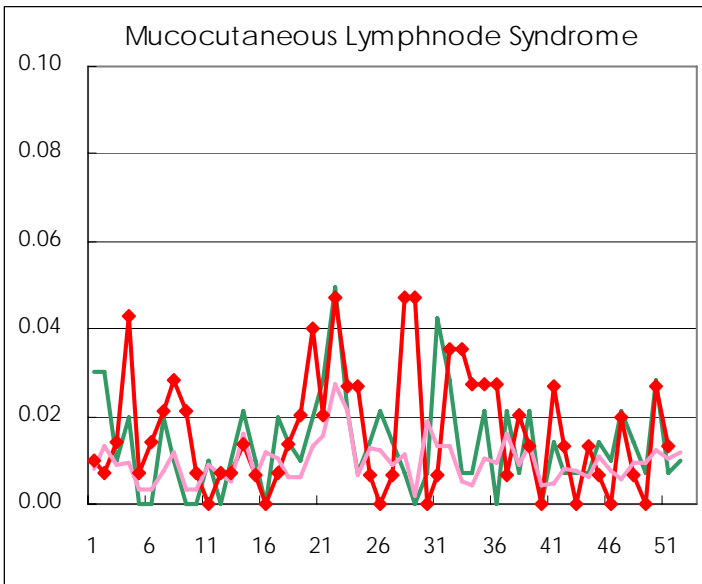
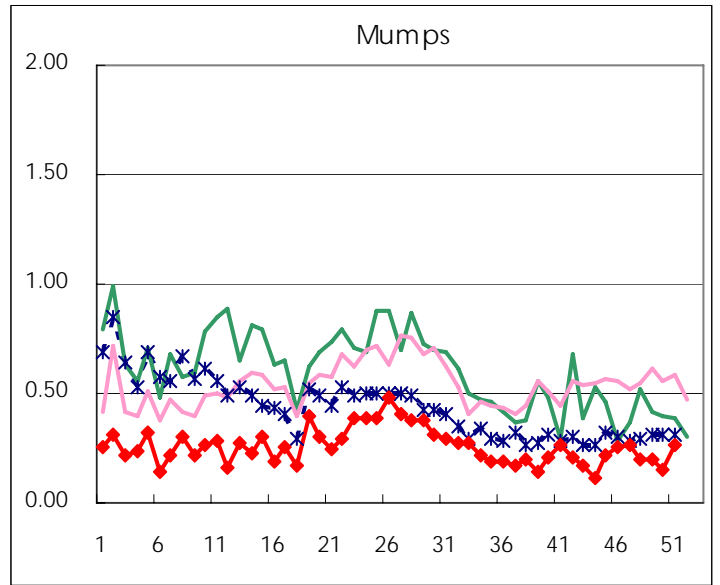
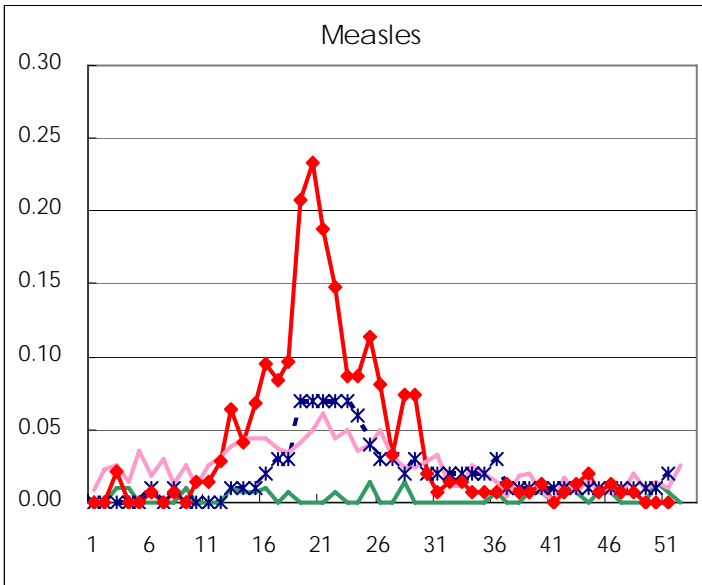
Diseases	2007				4wks total	Cum 2007
	48th	49th	50th	51th		
Respiratory syncytial virus infection	85	102	115	119	421	1313
Influenza	651	1,362	2,052	2,511	6,576	51682
Pharyngoconjunctival fever	28	57	47	47	179	2754
Group A streptococcal pharyngitis	364	280	279	333	1,256	11718
Infectious gastroenteritis	2,070	2,755	3,110	3,137	11,072	44719
Chickenpox	206	200	267	245	918	8600
Hand, foot, and mouth disease	45	31	35	29	140	4356
Erythema infectiosum	21	32	37	34	124	2854
Exanthem subitum	87	83	95	71	336	4627
Pertussis	3	6	4	7	20	149
Rubella	1				1	34
Herpangina	12	16	13	10	51	6802
Measles	1				1	302
Mumps	29	30	22	39	120	1907
Cold with exanthems by Enterovirus	7	12	16	9	44	658
Mucocutaneous Lymphnode Syndrome	1		4	2	7	109
Acute hemorrhagic conjunctivitis	3	2	1	1	7	80
Epidemic keratoconjunctivitis	10	26	14	25	75	949
Bacterial meningitis	1	2	2		5	33
Aseptic meningitis			1		1	51
Mycoplasma pneumonia	13	10	13	8	44	232
Chlamydial pneumonia (excluding psittacosis)			2		2	21
Measles in adults			2	1	3	261

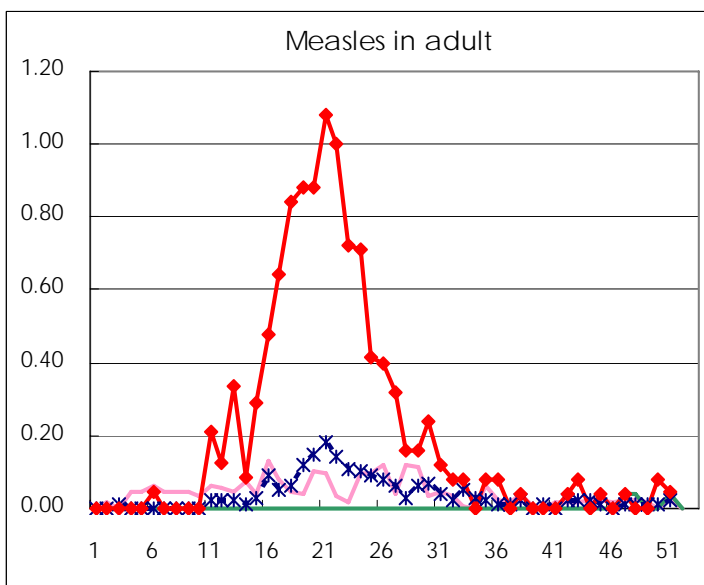
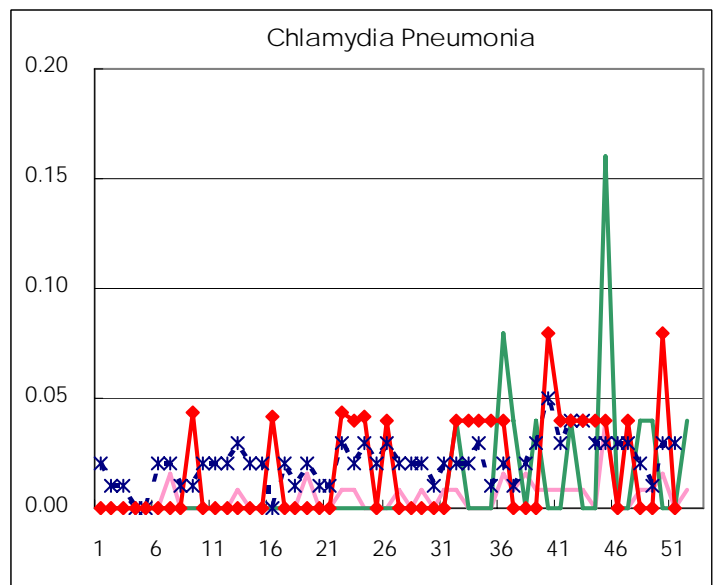
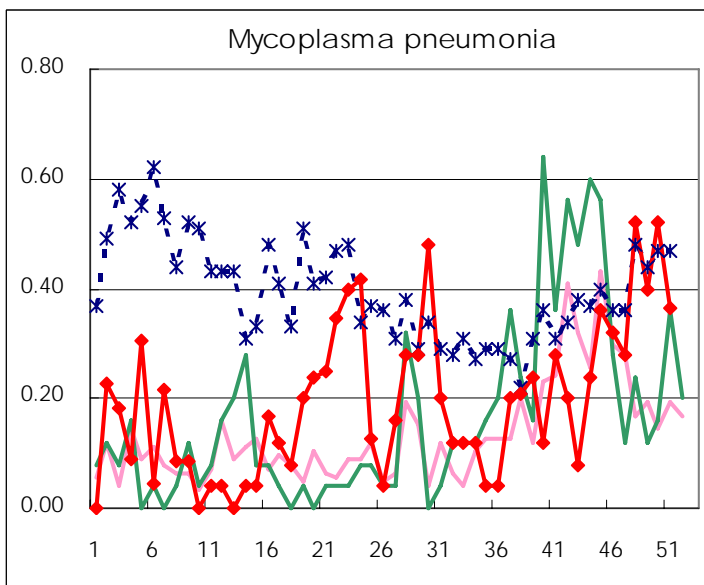
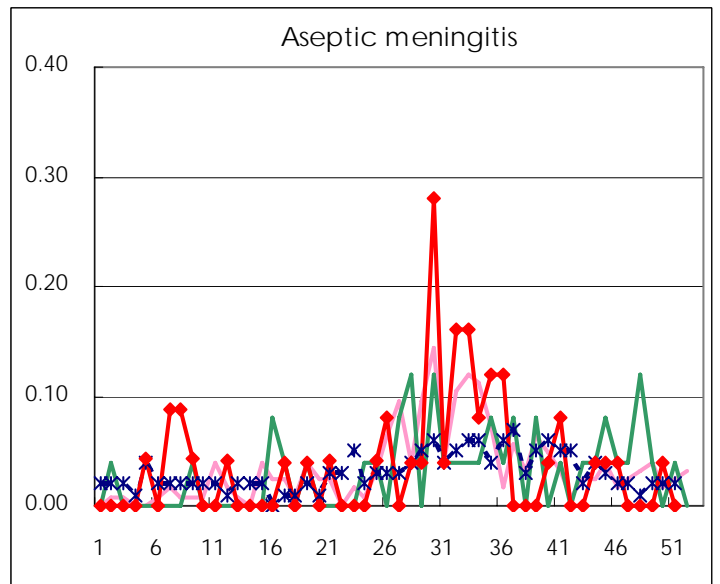
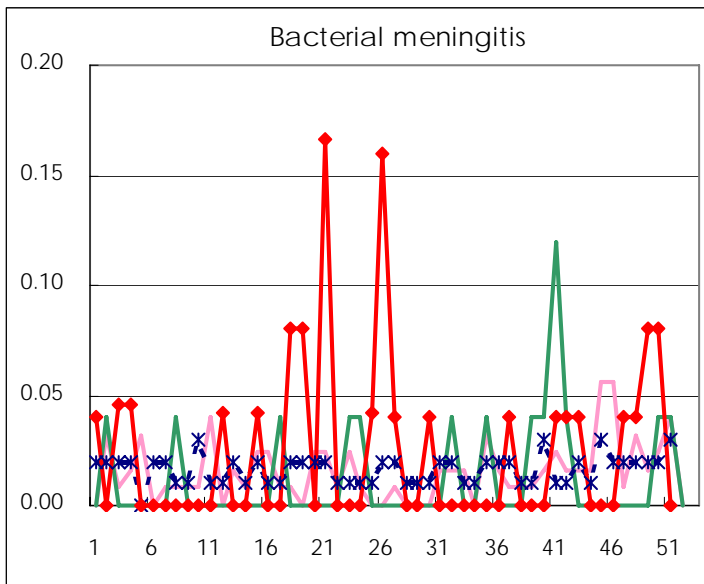
( Blank means 0. )

# Disease Trend Graph (weekly reported cases per fixed-point in comparison)









Number of sentinel facilities for weekly reporting		
Types of sentinels	Number of sentinels	Sentinels having reported
Pediatric	150	149
Influenza	290	286
Ophthalmic	39	38
Specially-designated	25	22

Tokyo Metropolitan Government  
Infectious Disease Surveillance Center