
INFECTIOUS DISEASES WEEKLY REPORT

TOKYO IDWR

Tokyo Metropolitan Infectious Disease Surveillance Center

8 January 2008 / Number 52

Surveillance System in Tokyo, Japan

The infectious diseases which all physicians must report

All physicians must report to health centers the incidence of the diseases which are shown at page one. Health centers electronically report the individual cases to Tokyo Metropolitan Infectious Disease Surveillance Center.

The infectious diseases required to be reported by the sentinels

The numbers of patients who visit the sentinel clinics or hospitals during a week are reported to health centers in Tokyo. And they electronically report the numbers to Tokyo Metropolitan Infectious Disease Surveillance Center. We have about 400 sentinel clinics and hospitals in Tokyo.

1st Week is early January and 52nd Week is end of December.

Tokyo Metropolitan Institute of Public Health
Epidemiological Information Office

TEL:81-3-3363-3213 FAX:81-3-5332-7365

e-mail:idsc@tokyo-eiken.go.jp

URL:idsc.tokyo-eiken.go.jp/

Number of patients with the diseases which all physicians must report

Category	Diseases	Tokyo				Japan		
		49th	50th	51th	52th	Cum 2007	52th	Cum 2007
I	Ebola hemorrhagic fever							
	Crimean-Congo hemorrhagic fever							
	Smallpox							
	South American hemorrhagic fever							
	Plague							
	Marburg disease							
	Lassa fever							
II	Acute poliomyelitis							
	Tuberculosis	69	69	96	41	2991	340	20151
	Diphtheria							
	Severe Acute Respiratory Syndrome(SARS)							
III	Cholera				1	3		12
	Shigellosis	4		2	1	86	3	450
	Enterohemorrhagic Escherichia coli infection	4	2	2	2	476	11	4586
	Typhoid fever					11		47
	Paratyphoid fever					7	2	22
IV	Hepatitis E					3		54
	West Nile fever							
	Hepatitis A	1	1			19	1	154
	Echinococcosis					3		16
	Yellow fever							
	Psittacosis					1		30
	Omsk hemorrhagic fever							
	Relapsing fever							
	Kyasanur forest disease							
	Q fever				1	2		7
	Rabies							
	Coccidioidomycosis					2		3
	Monkeypox							
	Hemorrhagic fever with renal syndrome							
	Western equine encephalitis							
	Tick-borne encephalitis							
	Anthrax							
	Scrub typhus(Tsutsugamushi disease)	3	1	1	2	15	26	370
	Dengue fever	1				23		89
	Eastern equine encephalitis							
	Avian influenza virus infection							
	Nipah virus infection							
	Japanese spotted fever							98
	Japanese encephalitis							10
	Epidemic typhus							
	Hantavirus pulmonary syndrome							
	Herpes B virus infection							
	Glanders							
	Brucellosis							1
	Venezuelan equine encephalitis							
	Hendra virus infection							
	Botulism							3
Malaria			1		23	1	52	
Tularemia								
Lyme disease					3		12	
Lyssavirus infection(excluding rabies)								
Rift valley fever								
Melioidosis								
Legionellosis	1	1			53	8	655	
Leptospirosis				1	4	1	34	
Rocky mountain spotted fever								

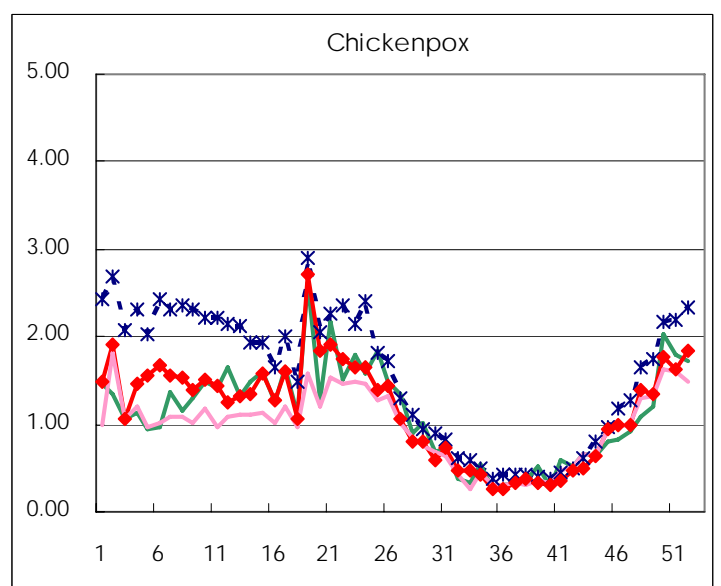
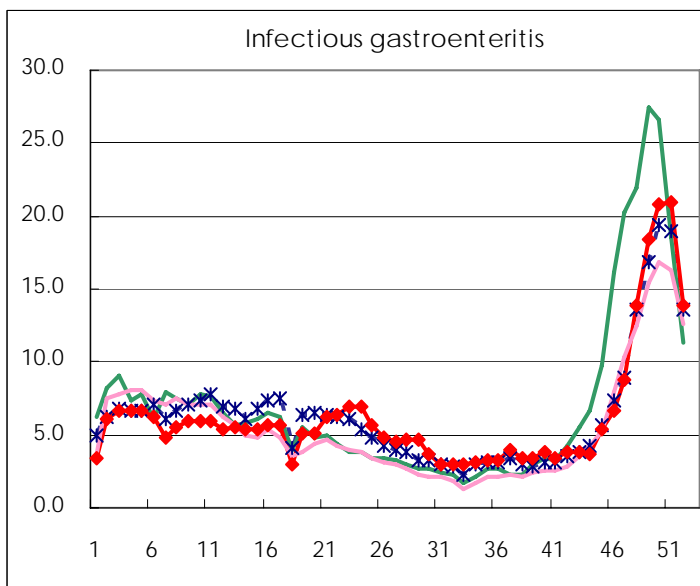
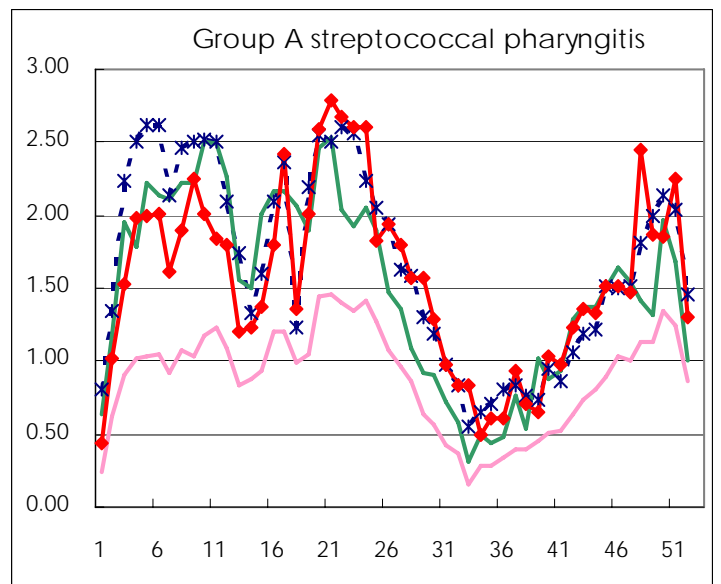
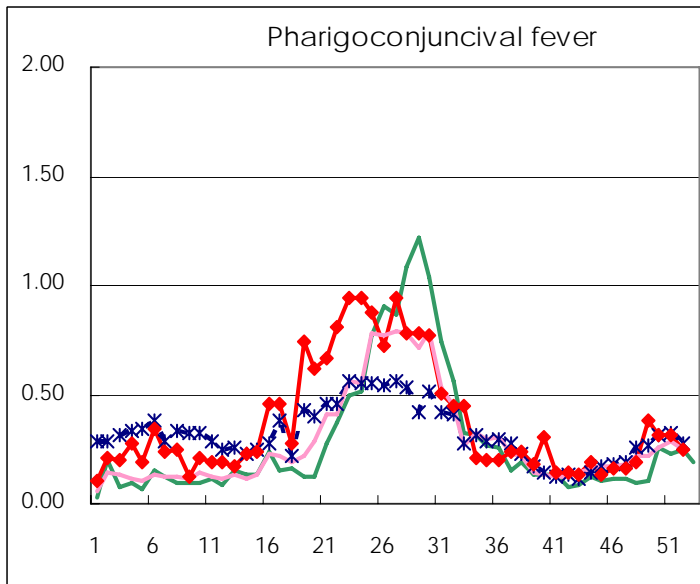
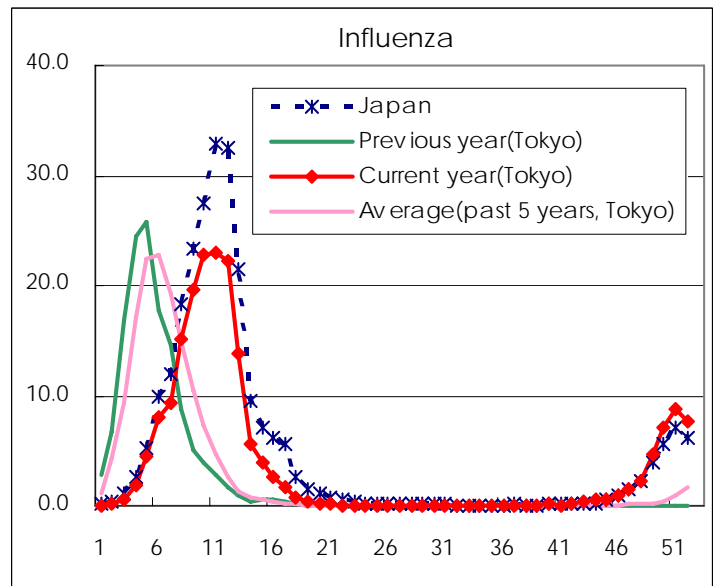
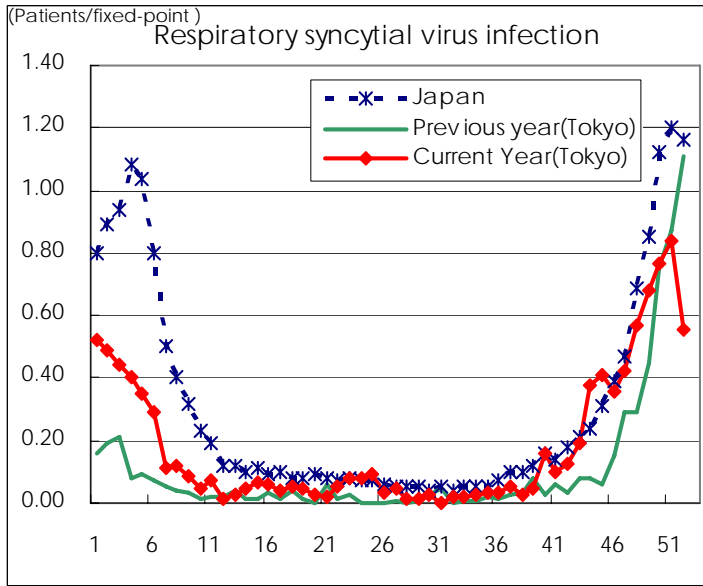
Category	Diseases	Tokyo				Japan		
		49th	50th	51th	52th	Cum 2007	52th	Cum 2007
V	Amebiasis	2	2		4	166	9	781
	Viral hepatitis(excluding hepatitis A and E)	3		1		40	1	231
	Acute encephalitis(excluding JE and WNE)		1		1	20	1	216
	Cryptosporidiosis					1		6
	Creutzfeldt-Jakob disease				1	16	1	148
	Severe invasive streptococcal infections(TSLS)					6	2	96
	Acquired immunodeficiency syndrome (AIDS)	16	11	14	5	515	8	1449
	Giardiasis	1	1	1	1	19		56
	Meningococcal meningitis					3		17
	Congenital rubella syndrome							
	Syphilis	5	4	1	4	162	9	714
	Tetanus					1	1	88
	Vancomycin-resistant S. aureus infection							
	Vancomycin-resistant Enterococcus infection		2			17		80
designated	Influenza (H5N1)							

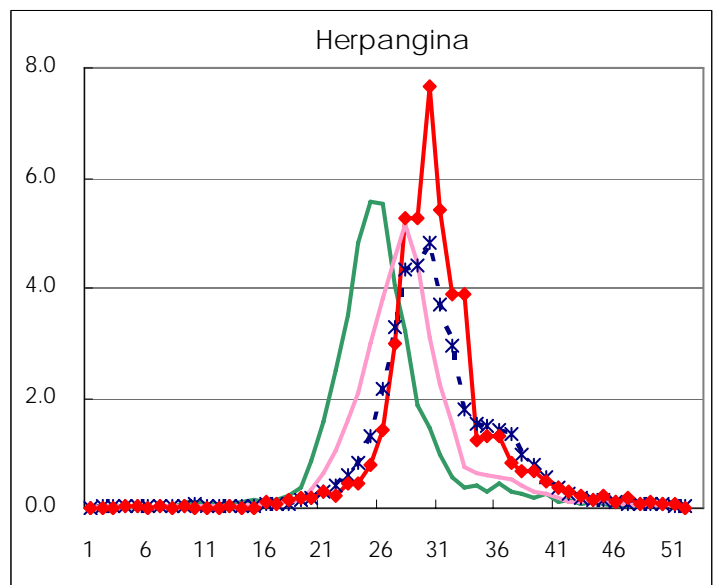
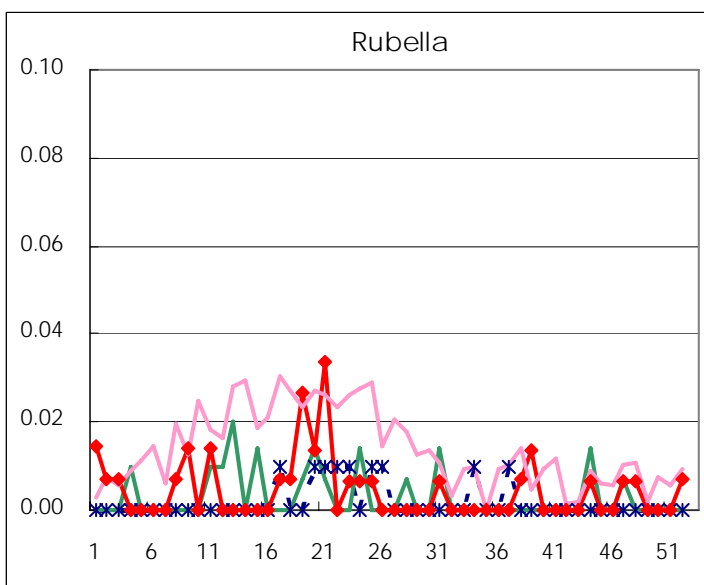
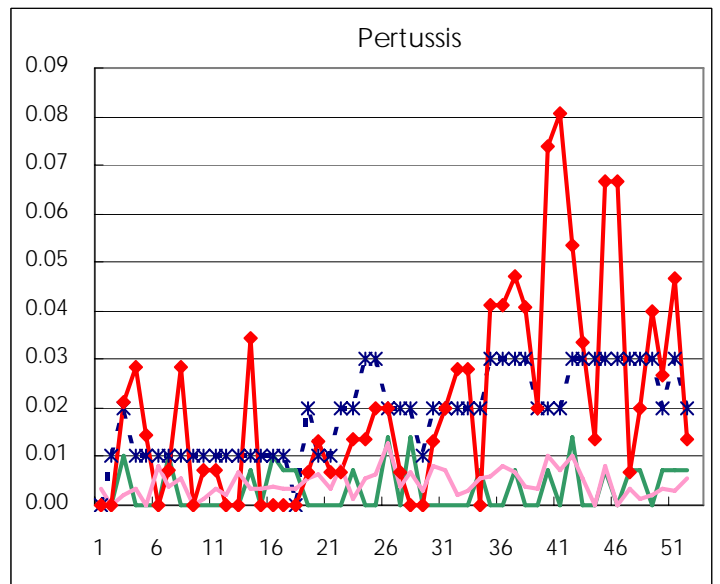
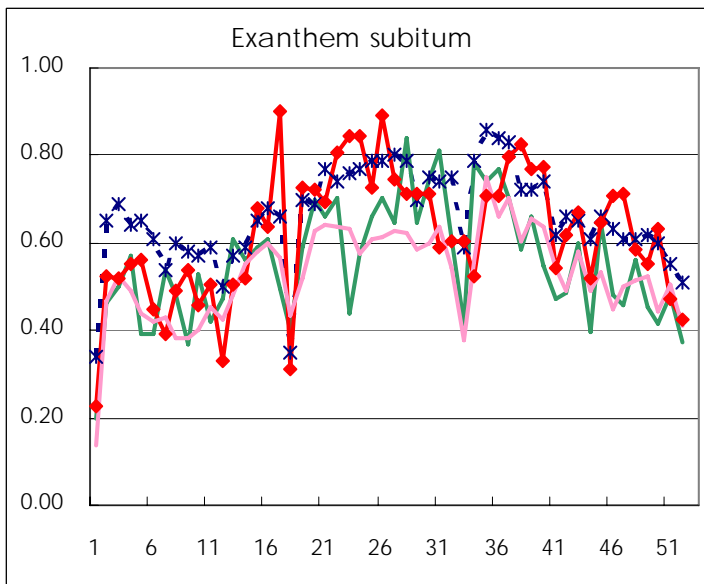
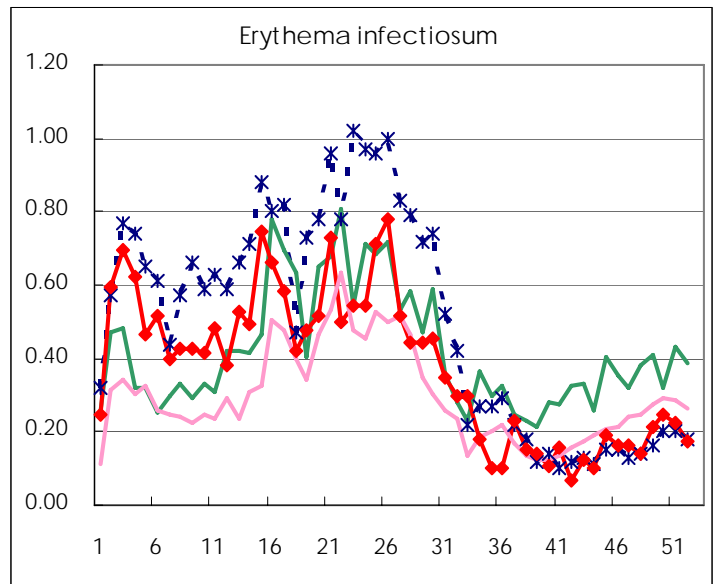
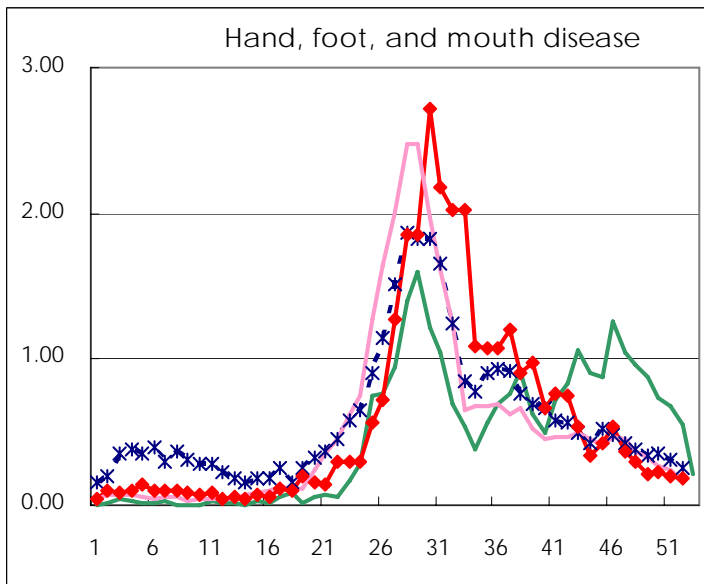
Number of patients with the diseases to be reported
by the designated clinics and hospitals

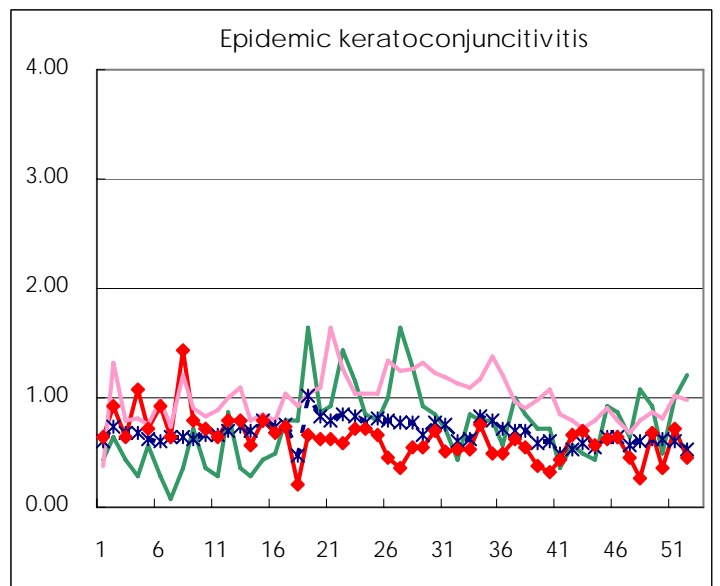
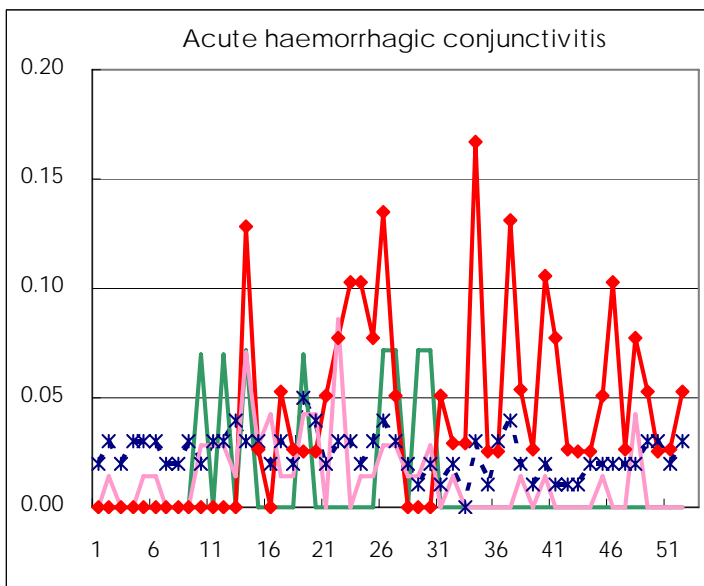
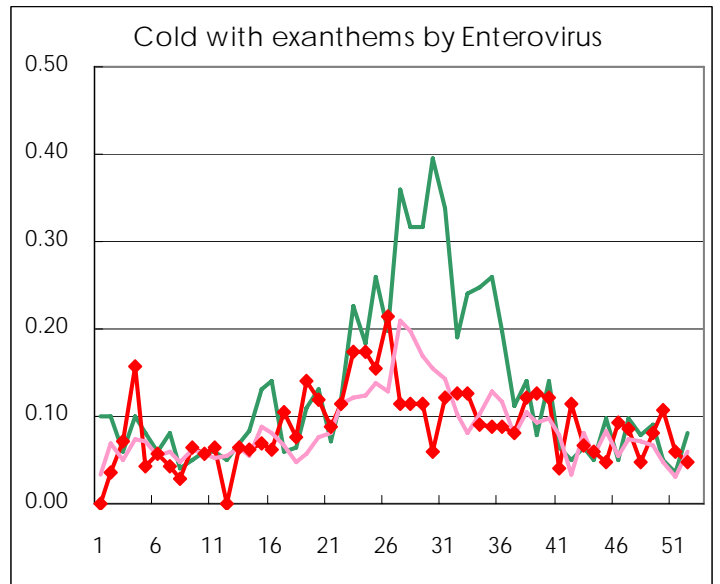
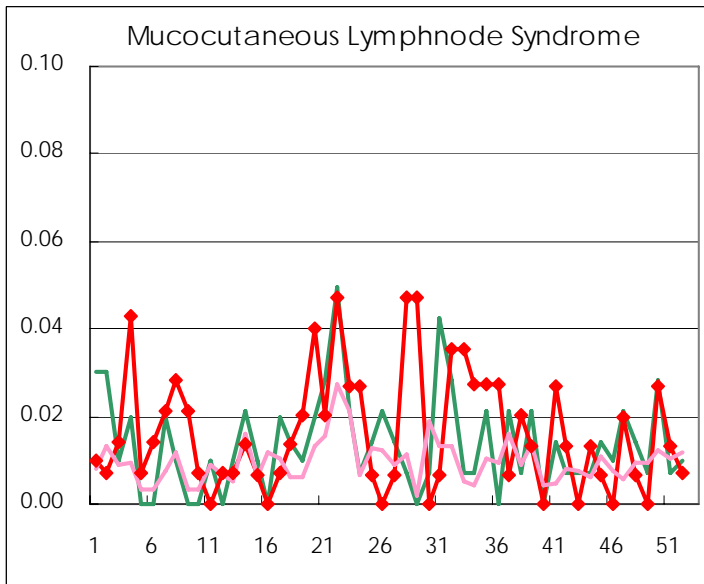
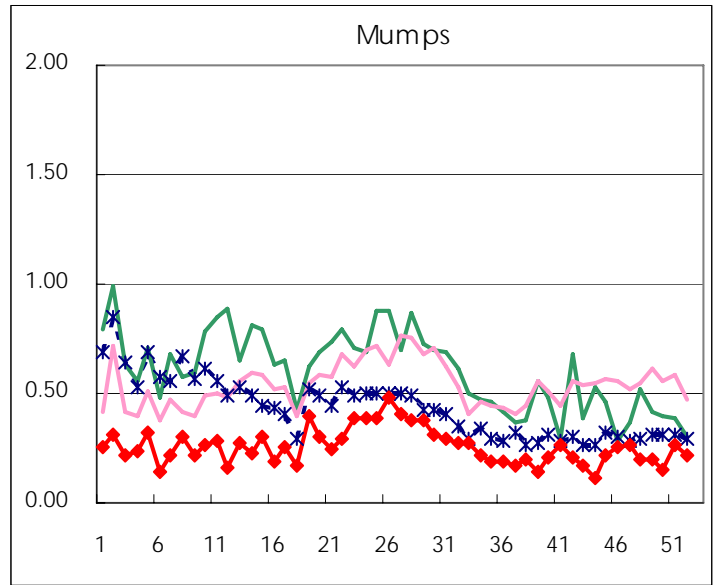
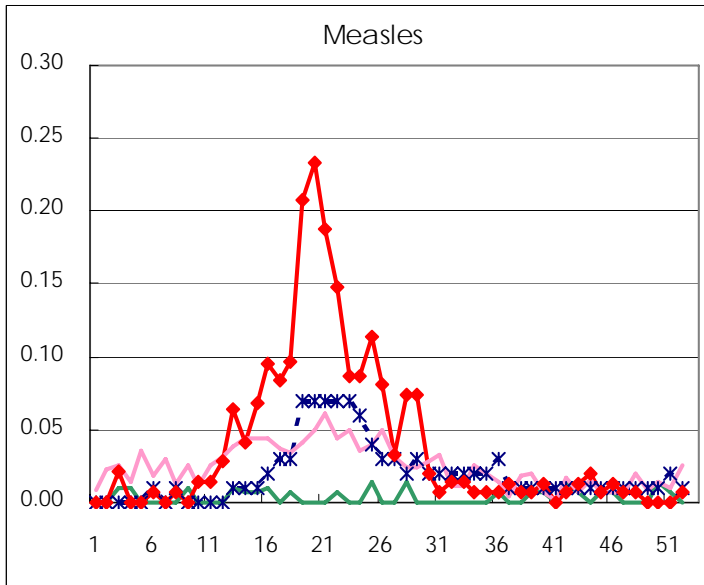
Diseases	2007				4wks total	Cum 2007
	49th	50th	51th	52th		
Respiratory syncytial virus infection	102	115	126	81	424	1401
Influenza	1,362	2,052	2,536	2,182	8,132	53889
Pharyngoconjunctival fever	57	47	47	36	187	2790
Group A streptococcal pharyngitis	280	279	337	190	1,086	11912
Infectious gastroenteritis	2,755	3,110	3,148	2,019	11,032	46749
Chickenpox	200	267	245	267	979	8867
Hand, foot, and mouth disease	31	35	29	26	121	4382
Erythema infectiosum	32	37	34	25	128	2879
Exanthem subitum	83	95	71	62	311	4689
Pertussis	6	4	7	2	19	151
Rubella				1	1	35
Herpangina	16	13	10	2	41	6804
Measles				1	1	303
Mumps	30	22	39	32	123	1939
Cold with exanthems by Enterovirus	12	16	9	7	44	665
Mucocutaneous Lymphnode Syndrome		4	2	1	7	110
Acute hemorrhagic conjunctivitis	2	1	1	2	6	82
Epidemic keratoconjunctivitis	26	14	27	17	84	968
Bacterial meningitis	2	2			4	33
Aseptic meningitis		1			1	51
Mycoplasma pneumonia	10	13	12	3	38	239
Chlamydial pneumonia (excluding psittacosis)		2		1	3	22
Measles in adults		2	2		4	262

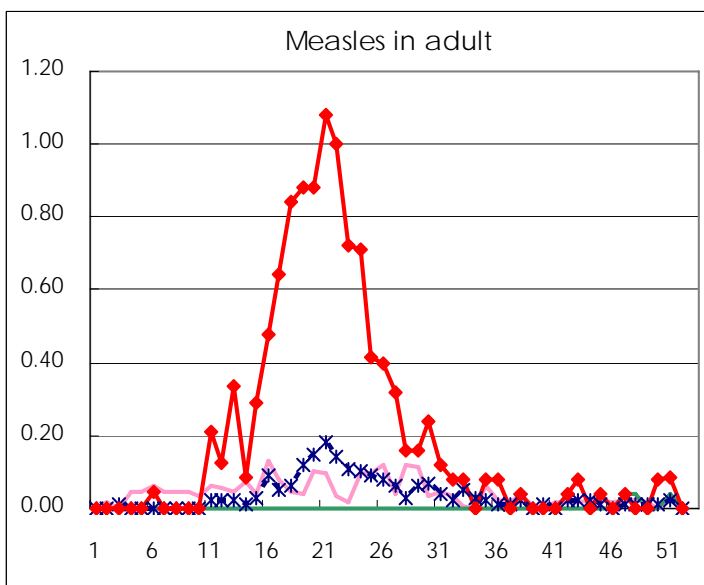
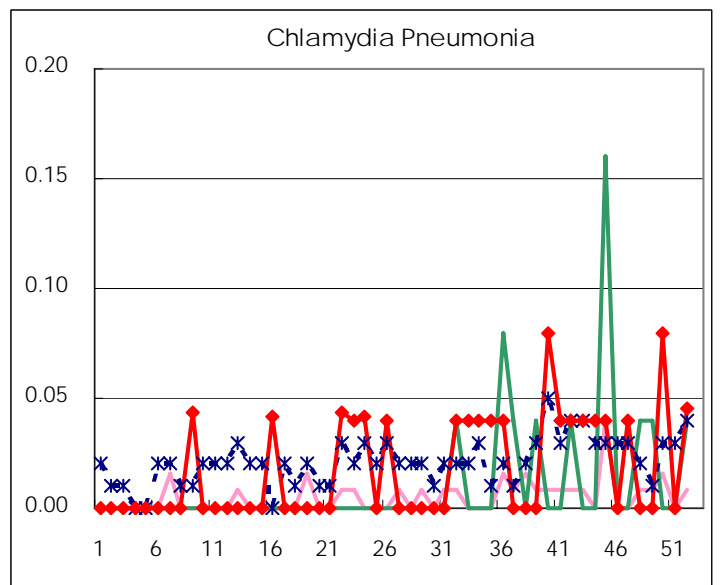
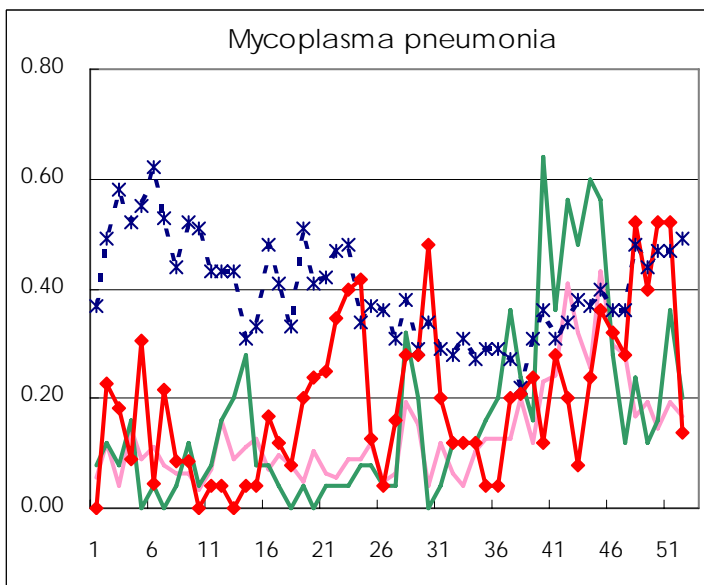
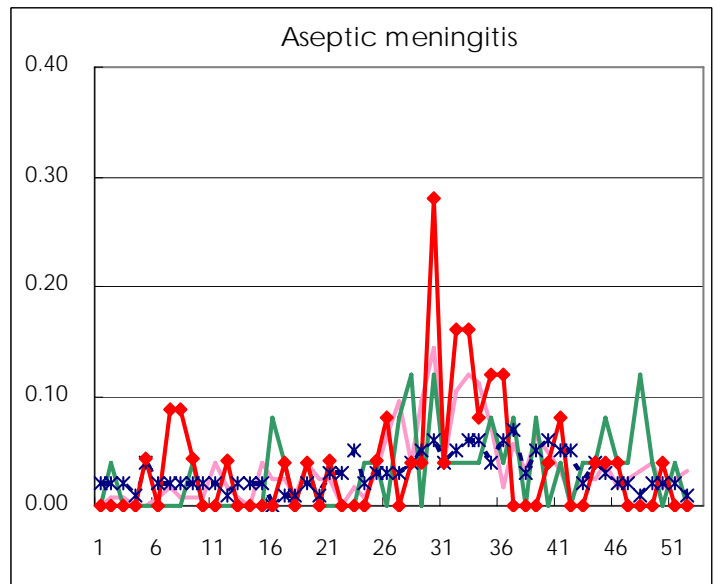
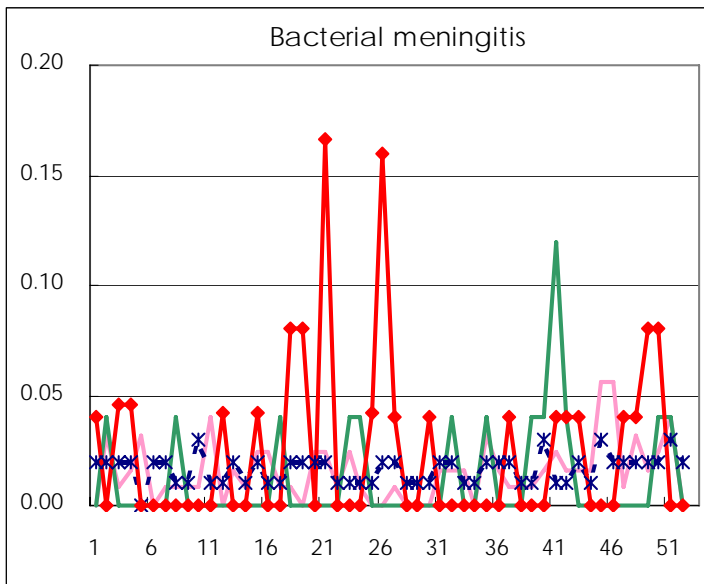
(Blank means 0.)

Disease Trend Graph (weekly reported cases per fixed-point in comparison)









Number of sentinel facilities for weekly reporting		
Types of sentinels	Number of sentinels	Sentinels having reported
Pediatric	150	146
Influenza	290	284
Ophthalmic	39	38
Specially-designated	25	22

Tokyo Metropolitan Government
Infectious Disease Surveillance Center