
INFECTIOUS DISEASES WEEKLY REPORT

TOKYO IDWR

Tokyo Metropolitan Infectious Disease Surveillance Center

11 January 2008 / Number 1

Surveillance System in Tokyo, Japan

The infectious diseases which all physicians must report

All physicians must report to health centers the incidence of the diseases which are shown at page one. Health centers electronically report the individual cases to Tokyo Metropolitan Infectious Disease Surveillance Center.

The infectious diseases required to be reported by the sentinels

The numbers of patients who visit the sentinel clinics or hospitals during a week are reported to health centers in Tokyo. And they electronically report the numbers to Tokyo Metropolitan Infectious Disease Surveillance Center. We have about 400 sentinel clinics and hospitals in Tokyo.

1st Week is early January and 52nd Week is end of December.

Tokyo Metropolitan Institute of Public Health
Epidemiological Information Office

TEL:81-3-3363-3213 FAX:81-3-5332-7365

e-mail:idsc@tokyo-eiken.go.jp

URL:idsc.tokyo-eiken.go.jp/

Number of patients with the diseases which all physicians must report

Category	Diseases	Tokyo				Japan		
		50th	51st	52nd	1st	Cum 2008	1st	Cum 2008
I	Ebola hemorrhagic fever							
	Crimean-Congo hemorrhagic fever							
	Smallpox							
	South American hemorrhagic fever							
	Plague							
	Marburg disease							
	Lassa fever							
II	Acute poliomyelitis							
	Tuberculosis	69	96	41	20	20	62	62
	Diphtheria							
	Severe Acute Respiratory Syndrome(SARS)							
III	Cholera			1				
	Shigellosis		2	1			5	5
	Enterohemorrhagic Escherichia coli infection	2	2	2			2	2
	Typhoid fever							
	Paratyphoid fever							
IV	Hepatitis E							
	West Nile fever							
	Hepatitis A	1			1	1		
	Echinococcosis							
	Yellow fever							
	Psittacosis							
	Omsk hemorrhagic fever							
	Relapsing fever							
	Kyasanur forest disease							
	Q fever			1				
	Rabies							
	Coccidioidomycosis							
	Monkeypox							
	Hemorrhagic fever with renal syndrome							
	Western equine encephalitis							
	Tick-borne encephalitis							
	Anthrax							
	Scrub typhus(Tsutsugamushi disease)	1	1	2	1	1	4	4
	Dengue fever						2	2
	Eastern equine encephalitis							
	Avian influenza virus infection							
	Nipah virus infection							
	Japanese spotted fever							
	Japanese encephalitis							
	Epidemic typhus							
	Hantavirus pulmonary syndrome							
	Herpes B virus infection							
	Glanders							
	Brucellosis							
	Venezuelan equine encephalitis							
	Hendra virus infection							
	Botulism							
Malaria		1		1	1			
Tularemia								
Lyme disease								
Lyssavirus infection(excluding rabies)								
Rift valley fever								
Melioidosis								
Legionellosis	1					4	4	
Leptospirosis			1					
Rocky mountain spotted fever								

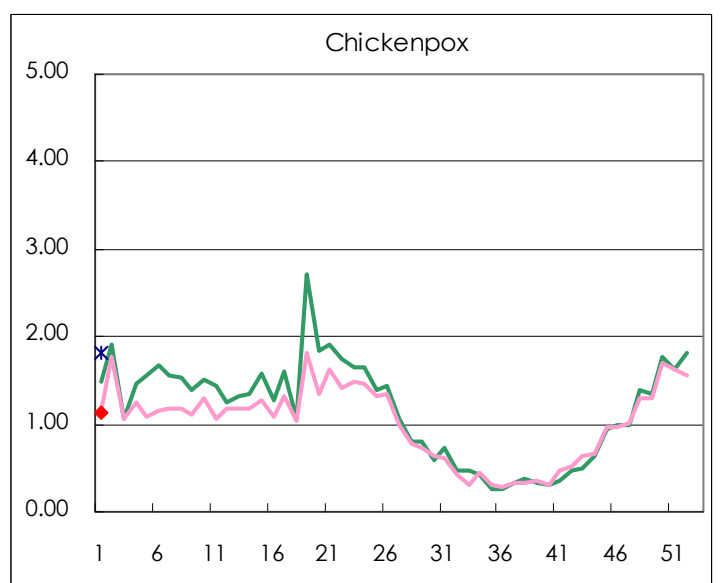
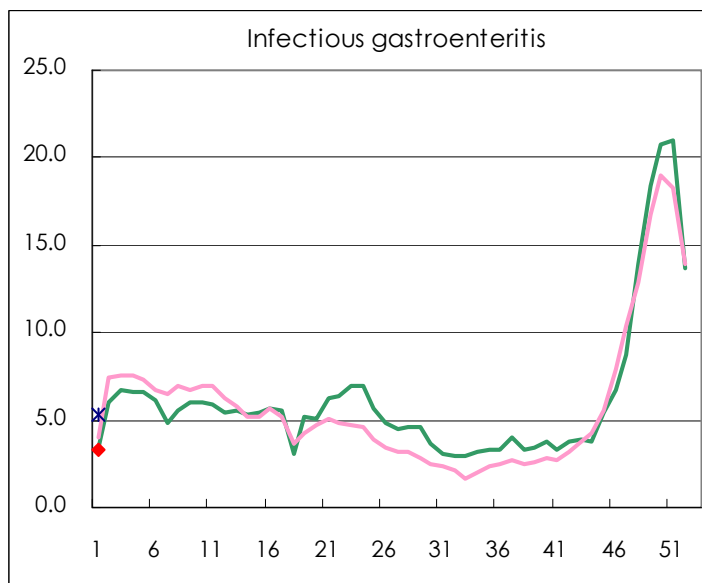
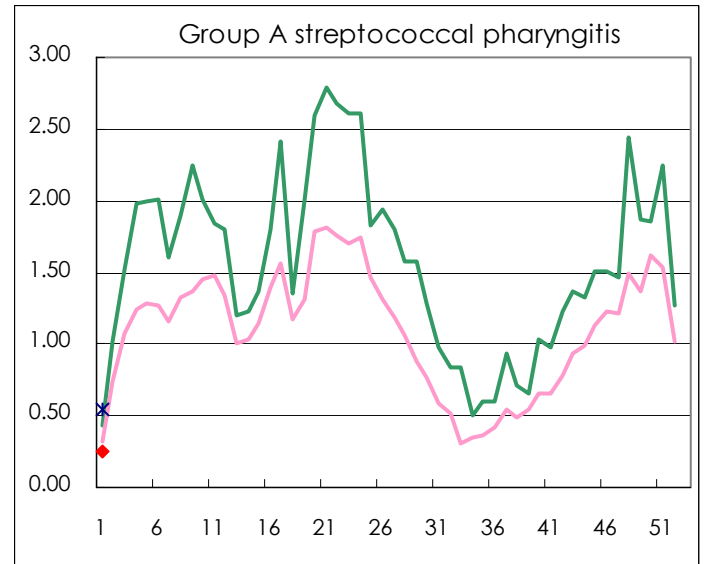
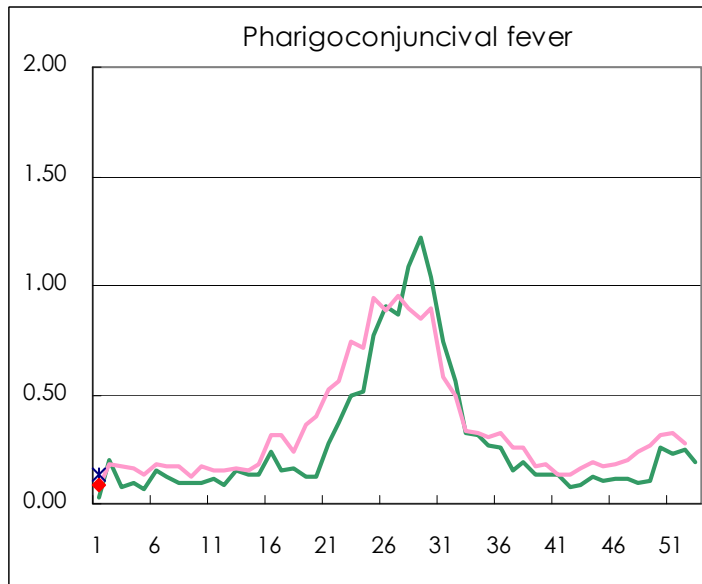
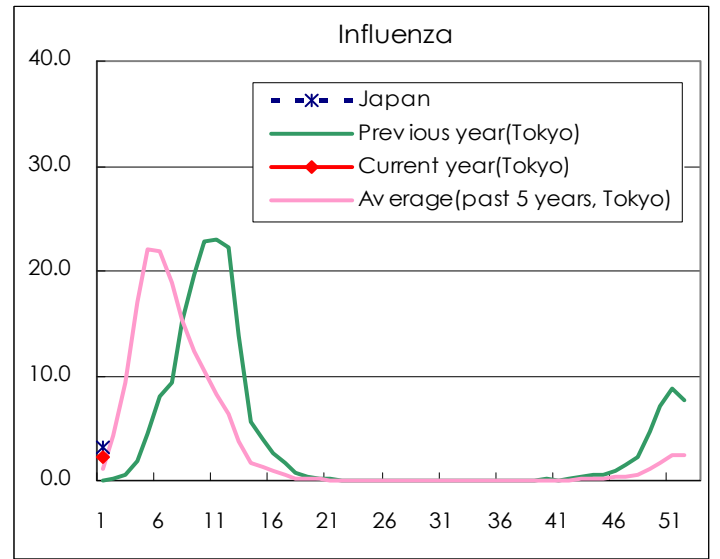
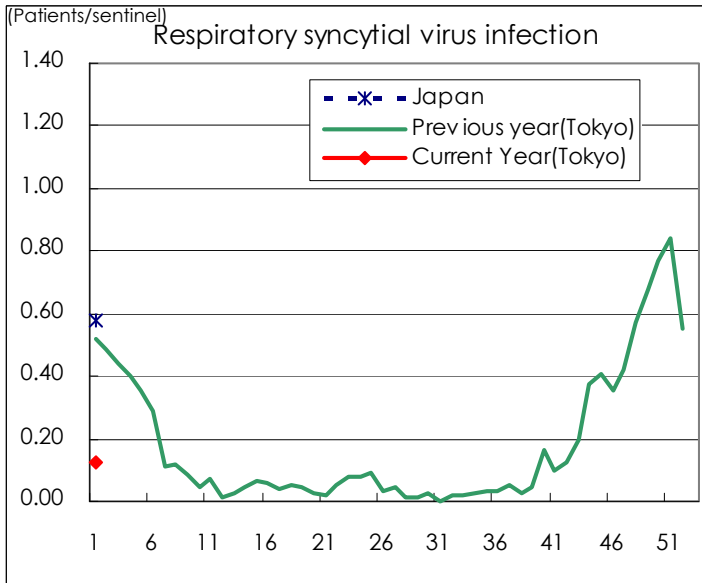
Category	Diseases	Tokyo					Japan	
		50th	51st	52nd	1st	Cum 2008	1st	Cum 2008
V	Amebiasis	2		4			1	1
	Viral hepatitis(excluding hepatitis A and E)		1		1	1	2	2
	Acute encephalitis(excluding JE and WNE)	1		1				
	Cryptosporidiosis							
	Creutzfeldt-Jakob disease			1				
	Severe invasive streptococcal infections(TSLS)							
	Acquired immunodeficiency syndrome (AIDS)	11	14	5	1	1	2	2
	Giardiasis	1	1	1				
	Meningococcal meningitis							
	Congenital rubella syndrome							
	Syphilis	4	1	4			2	2
	Tetanus						1	1
	Vancomycin-resistant S. aureus infection							
	Vancomycin-resistant Enterococcus infection	2						
	Rubella	-	-	-				
Measles	-	-	-	3	3	34	34	
designated	Influenza (H5N1)							

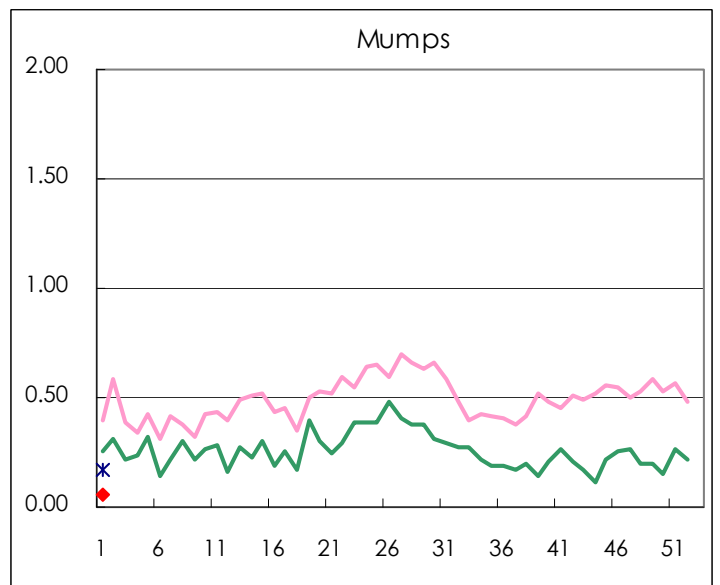
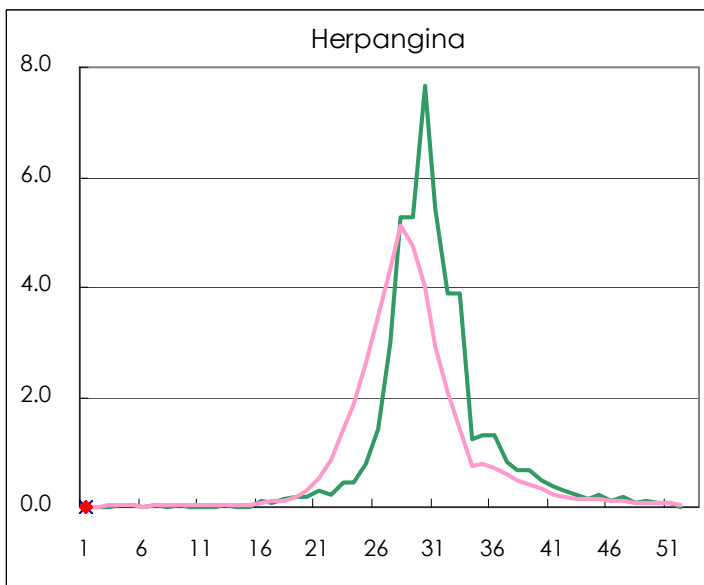
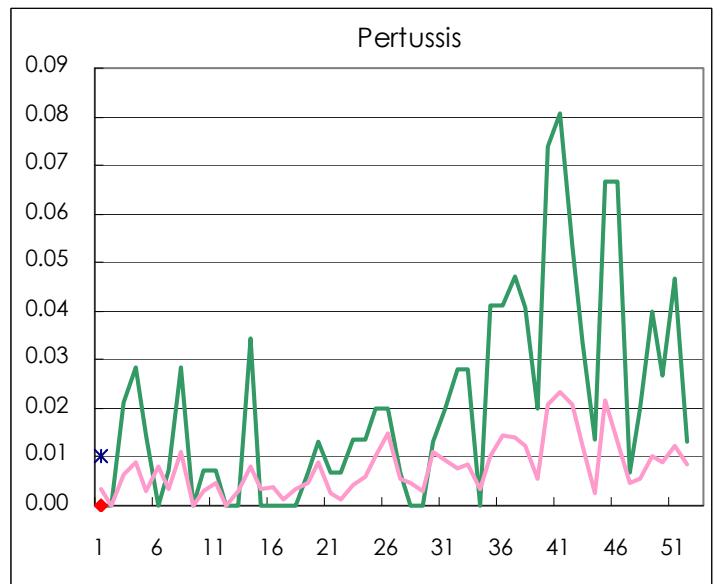
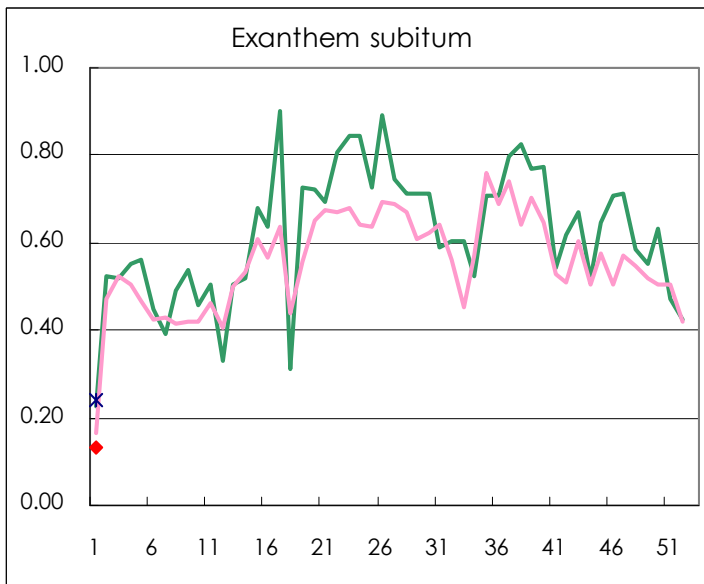
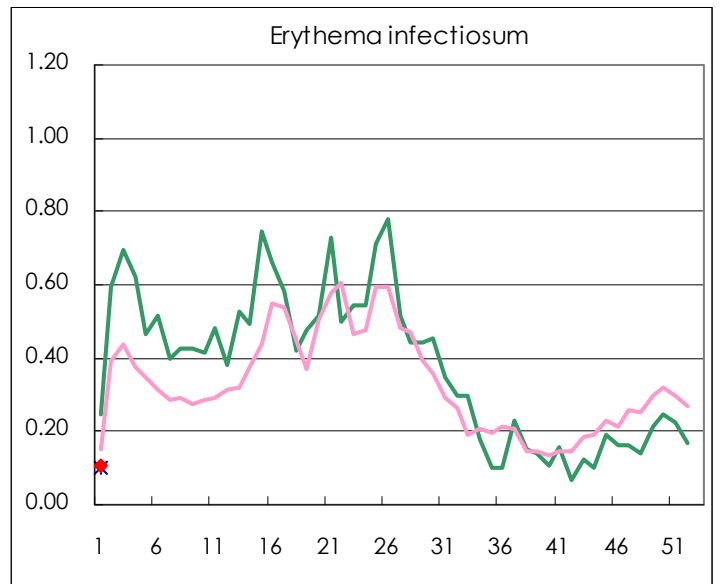
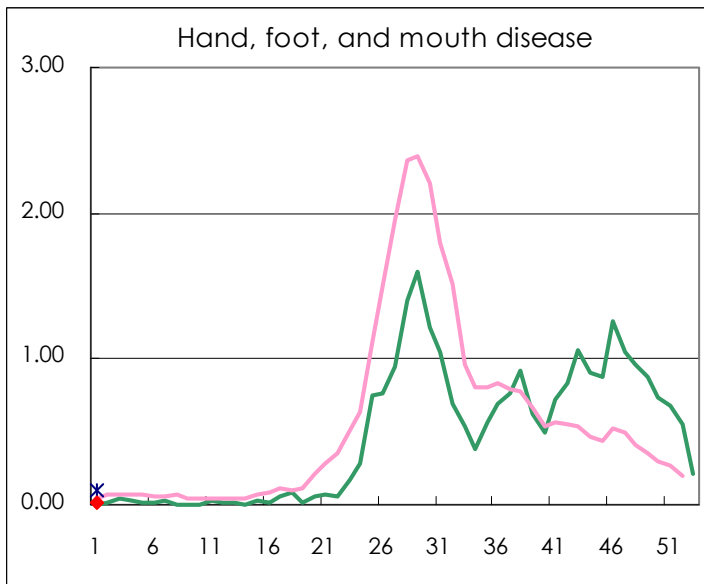
Number of patients with the diseases to be reported
by the designated clinics and hospitals

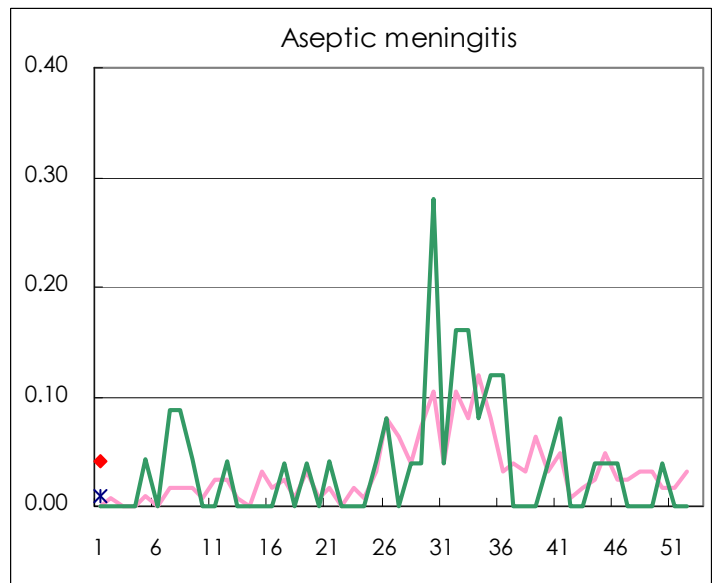
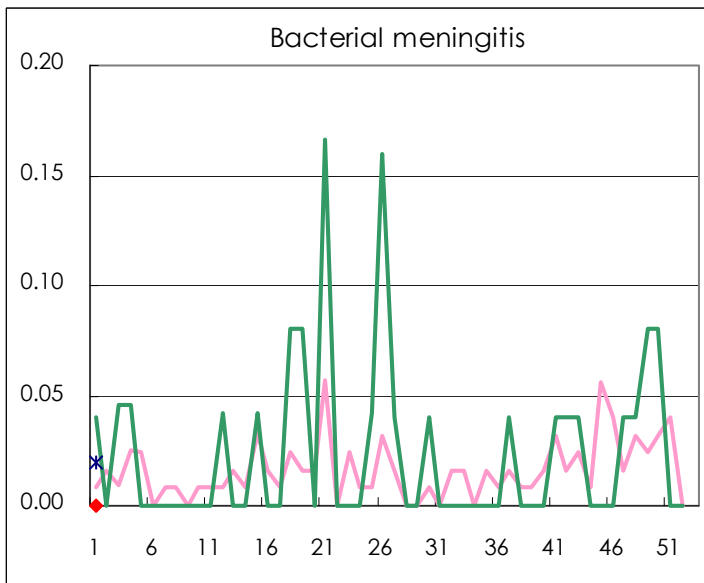
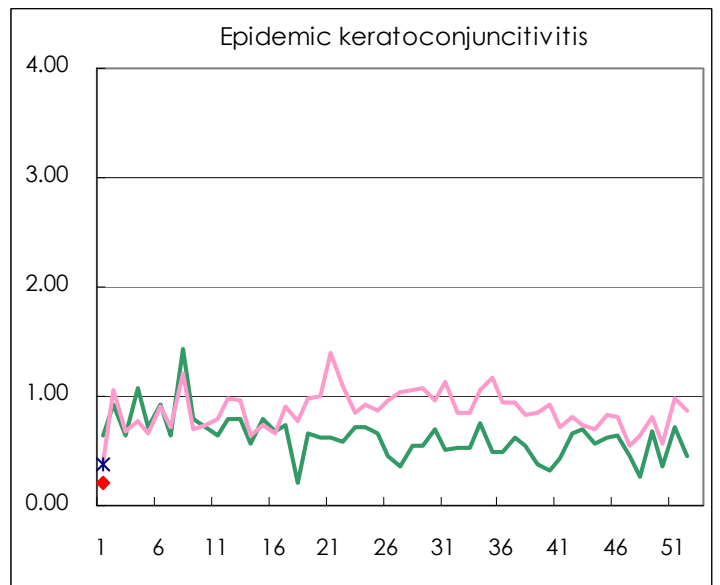
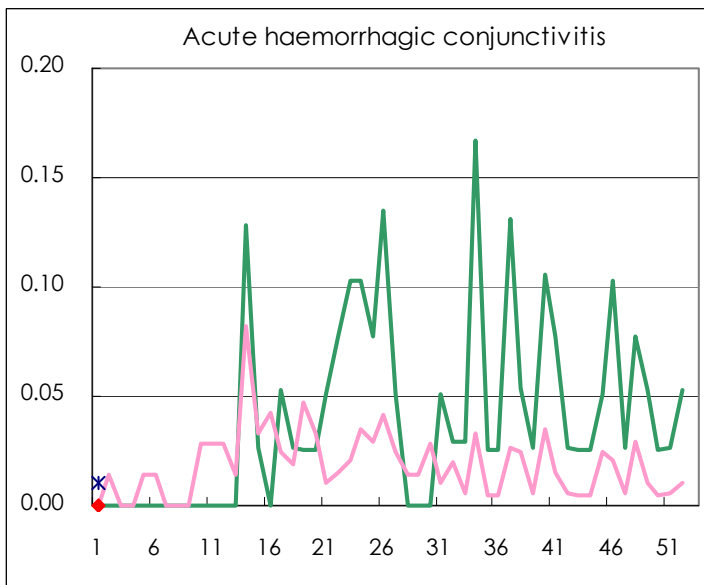
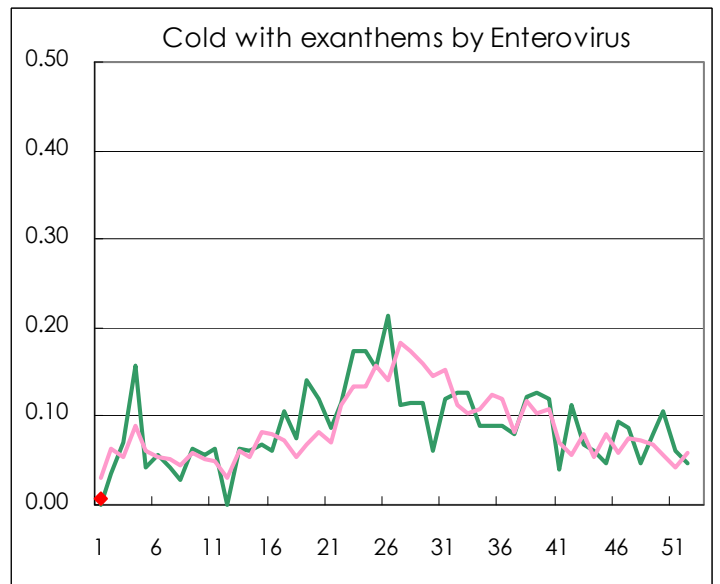
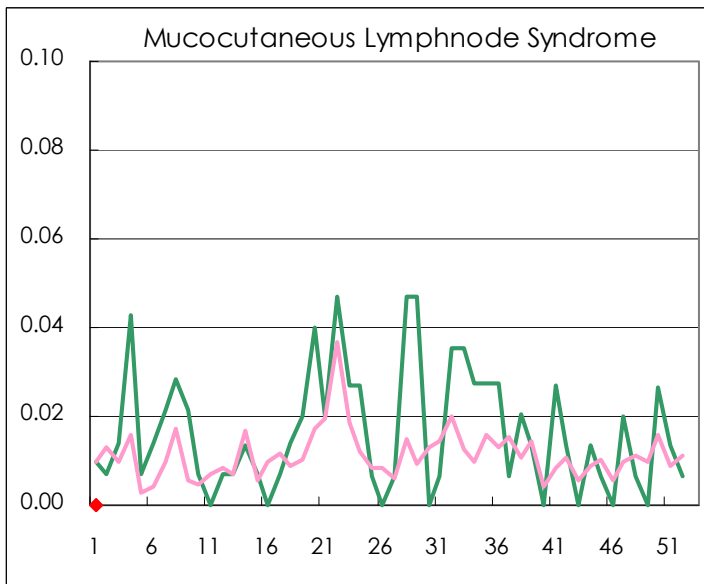
Diseases	2007			2008	
	50th	51st	52nd	1st	/sentinel
Respiratory syncytial virus infection	102	115	126	17	0.13
Pharyngoconjunctival fever	1,362	2,052	2,536	11	0.08
Group A streptococcal pharyngitis	57	47	47	34	0.26
Infectious gastroenteritis	280	279	337	445	3.37
Chickenpox	2,755	3,110	3,148	152	1.15
Hand, foot, and mouth disease	200	267	245	1	0.01
Erythema infectiosum	31	35	29	14	0.11
Exanthem subitum	32	37	34	18	0.14
Pertussis	83	95	71		
Herpangina	6	4	7	1	0.01
Mumps	16	13	10	7	0.05
Cold with exanthems by Enterovirus	30	22	39	1	0.01
Mucocutaneous Lymphnode Syndrome	12	16	9		
Influenza		4	2	567	2.20
Acute hemorrhagic conjunctivitis	2	1	1		
Epidemic keratoconjunctivitis	26	14	27	7	0.04
Bacterial meningitis	2	2			
Aseptic meningitis		1		1	0.04
Mycoplasma pneumonia	10	13	12	3	0.13
Chlamydial pneumonia (excluding psittacosis)		2			

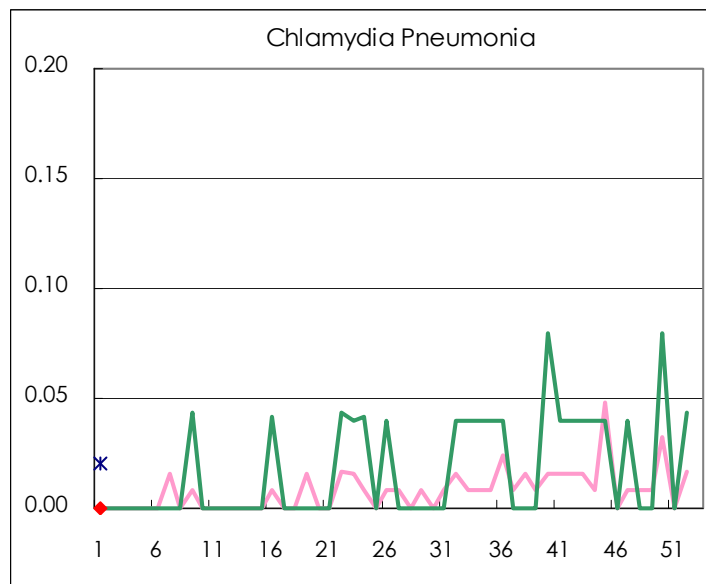
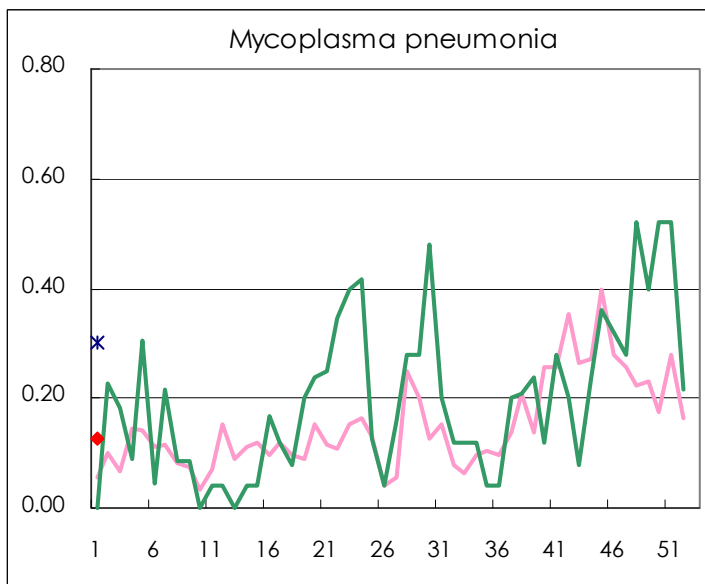
(Blank means 0.)

Disease Trend Graph (weekly reported cases per sentinel in comparison)









Types of sentinels	Number of sentinels	Sentinels having reported
Pediatric	150	148
Influenza	290	286
Ophthalmic	39	39
Specially-designated	25	24

Tokyo Metropolitan Government
Infectious Disease Surveillance Center