

---

INFECTIOUS DISEASES WEEKLY REPORT

# TOKYO IDWR

Tokyo Metropolitan Infectious Disease Surveillance Center

## 31 January 2008 / Number 4

### Surveillance System in Tokyo, Japan

The infectious diseases which all physicians must report

All physicians must report to health centers the incidence of the diseases which are shown at page one. Health centers electronically report the individual cases to Tokyo Metropolitan Infectious Disease Surveillance Center.

The infectious diseases required to be reported by the sentinels

The numbers of patients who visit the sentinel clinics or hospitals during a week are reported to health centers in Tokyo. And they electronically report the numbers to Tokyo Metropolitan Infectious Disease Surveillance Center. We have about 400 sentinel clinics and hospitals in Tokyo.

1st Week is early January and 52nd Week is end of December.

Tokyo Metropolitan Institute of Public Health  
Epidemiological Information Office

TEL:81-3-3363-3213 FAX:81-3-5332-7365

e-mail:[idsc@tokyo-eiken.go.jp](mailto:idsc@tokyo-eiken.go.jp)

URL:[idsc.tokyo-eiken.go.jp/](http://idsc.tokyo-eiken.go.jp/)

---

## Number of patients with the diseases which all physicians must report

Category	Diseases	Tokyo				Japan		
		1st	2nd	3rd	4th	Cum 2008	4th	Cum 2008
I	Ebola hemorrhagic fever							
	Crimean-Congo hemorrhagic fever							
	Smallpox							
	South American hemorrhagic fever							
	Plague							
	Marburg disease							
	Lassa fever							
II	Acute poliomyelitis							
	Tuberculosis	23	85	61	50	219	287	1129
	Diphtheria							
	Severe Acute Respiratory Syndrome(SARS)							
III	Cholera							1
	Shigellosis		3	3	2	8	6	29
	Enterohemorrhagic Escherichia coli infection		1		1	2	12	52
	Typhoid fever		1		1	2	1	3
	Paratyphoid fever		1			1		1
IV	Hepatitis E				1	1	2	3
	West Nile fever							
	Hepatitis A	1			1	2	10	17
	Echinococcosis							
	Yellow fever							
	Psittacosis							
	Omsk hemorrhagic fever							
	Relapsing fever							
	Kyasanur forest disease							
	Q fever							
	Rabies							
	Coccidioidomycosis							
	Monkeypox							
	Hemorrhagic fever with renal syndrome							
	Western equine encephalitis							
	Tick-borne encephalitis							
	Anthrax							
	Scrub typhus(Tsutsugamushi disease)	1	1	1		3	1	26
	Dengue fever		1	1		2		6
	Eastern equine encephalitis							
	Avian influenza virus infection							
	Nipah virus infection							
	Japanese spotted fever							
	Japanese encephalitis							
	Epidemic typhus							
	Hantavirus pulmonary syndrome							
	Herpes B virus infection							
	Glanders							
	Brucellosis							
	Venezuelan equine encephalitis							
	Hendra virus infection							
Botulism								
Malaria	1		1	1	3		2	
Tularemia								
Lyme disease								
Lyssavirus infection(excluding rabies)								
Rift valley fever								
Melioidosis								
Legionellosis		1		1	2	7	49	
Leptospirosis								
Rocky mountain spotted fever								

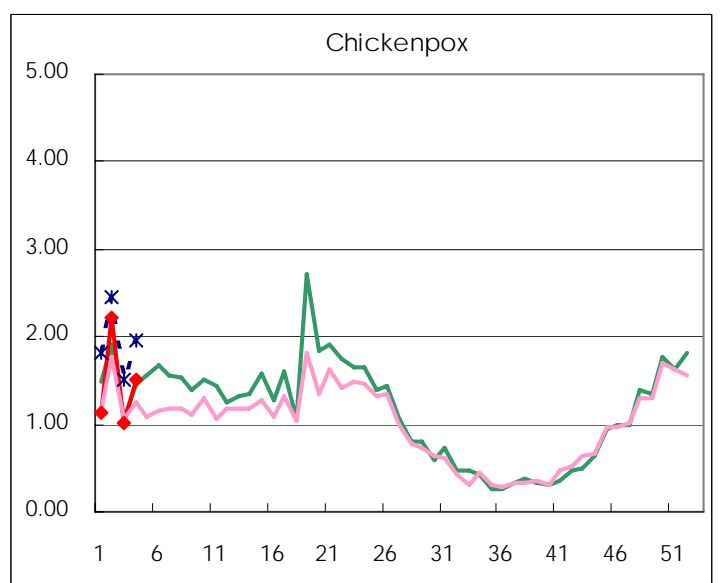
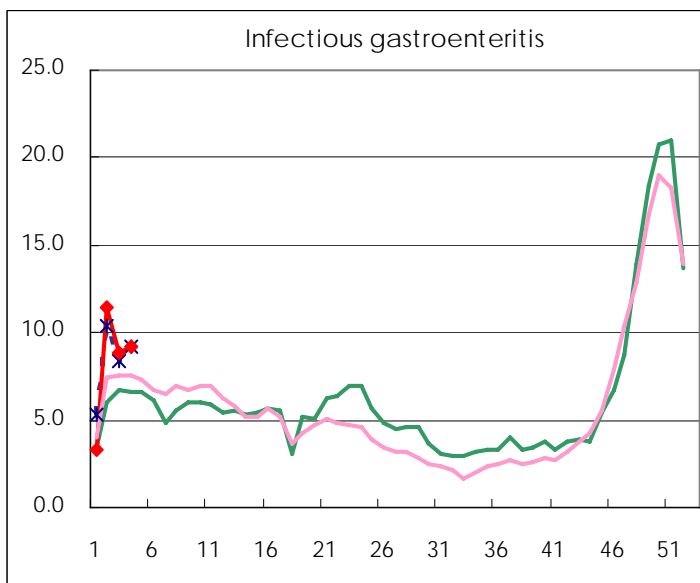
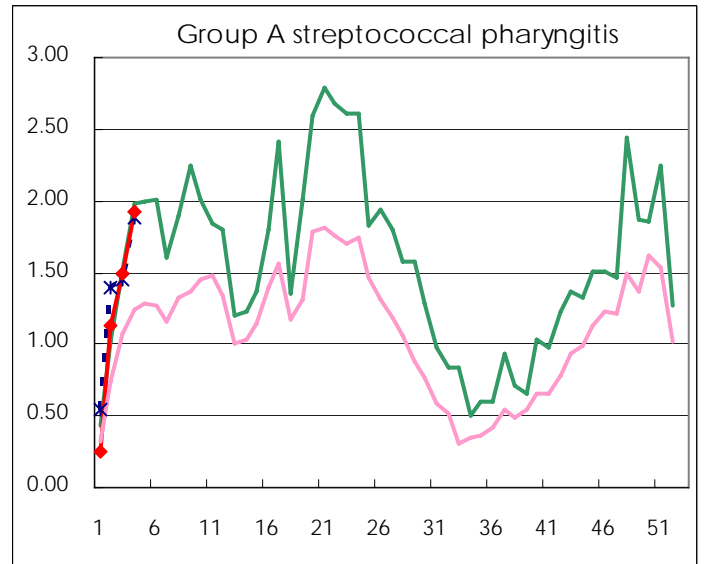
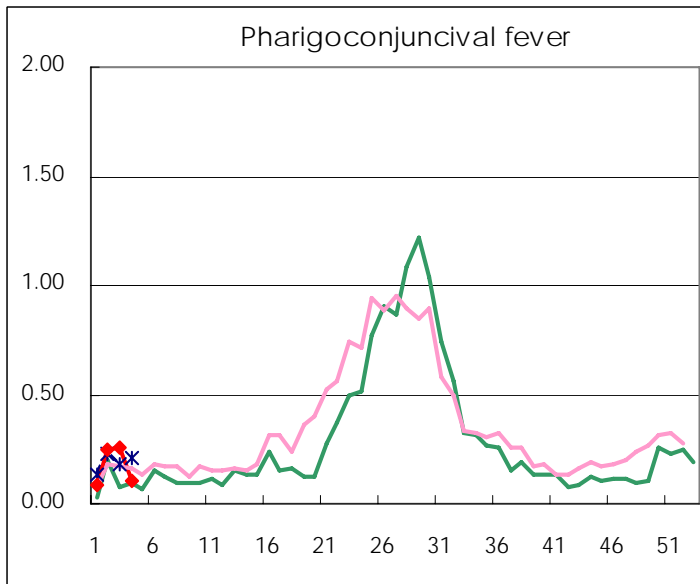
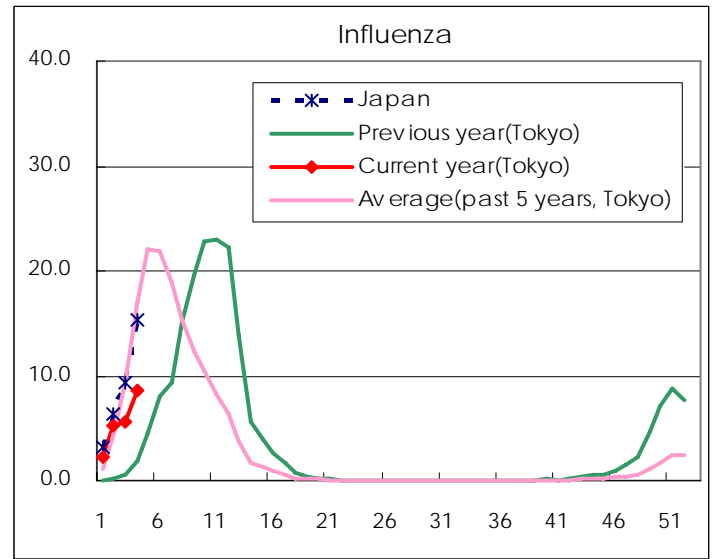
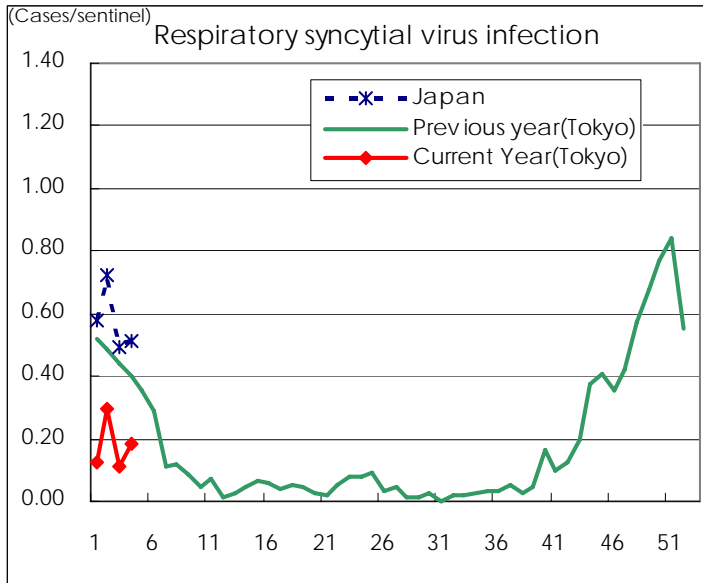
Category	Diseases	Tokyo					Japan	
		1st	2nd	3rd	4th	Cum 2008	4th	Cum 2008
V	Amebiasis		4	2	8	14	16	44
	Viral hepatitis(excluding hepatitis A and E)	1				1	1	13
	Acute encephalitis(excluding JE and WNE)			1	2	3	4	14
	Cryptosporidiosis							
	Creutzfeldt-Jakob disease						4	7
	Severe invasive streptococcal infections(TSLS)		2	1	1	4	1	8
	Acquired immunodeficiency syndrome (AIDS)	1	12	6	15	34	21	61
	Giardiasis			1		1		4
	Meningococcal meningitis						1	1
	Congenital rubella syndrome							
	Syphilis		2	3	5	10	10	36
	Tetanus		1	1		2		5
	Vancomycin-resistant S. aureus infection							
	Vancomycin-resistant Enterococcus infection						2	3
	Rubella				2	2	3	20
Measles	3	7	16	32	58	205	659	
designated	Influenza (H5N1)							

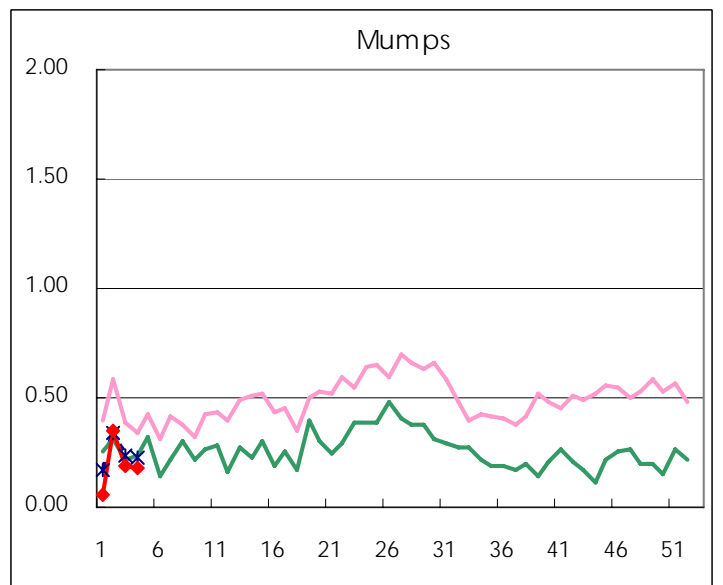
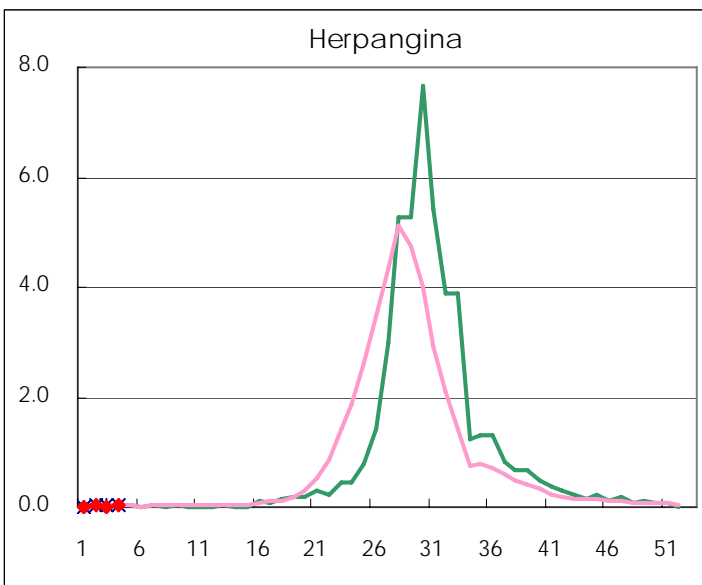
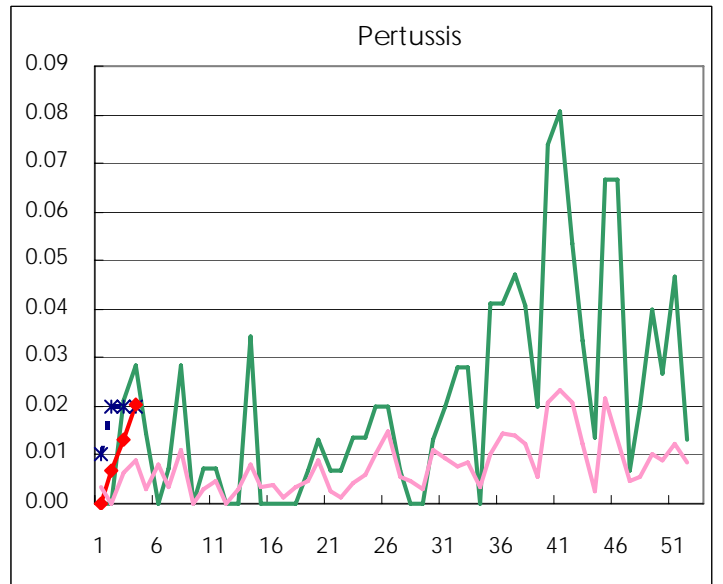
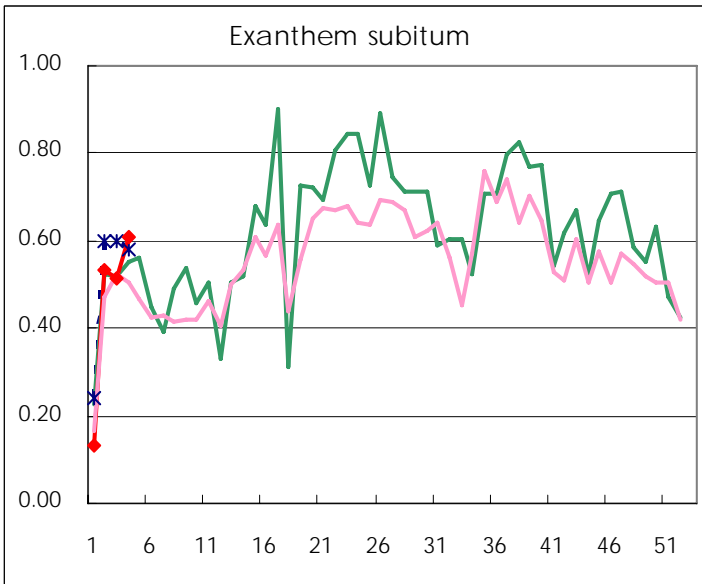
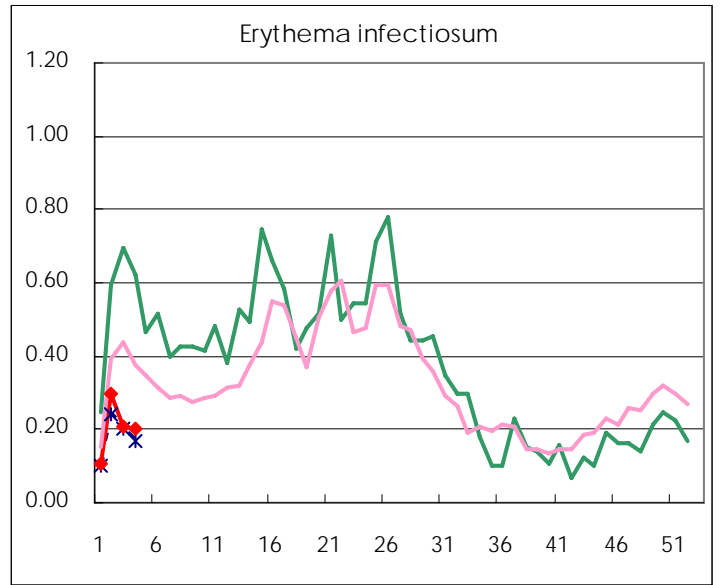
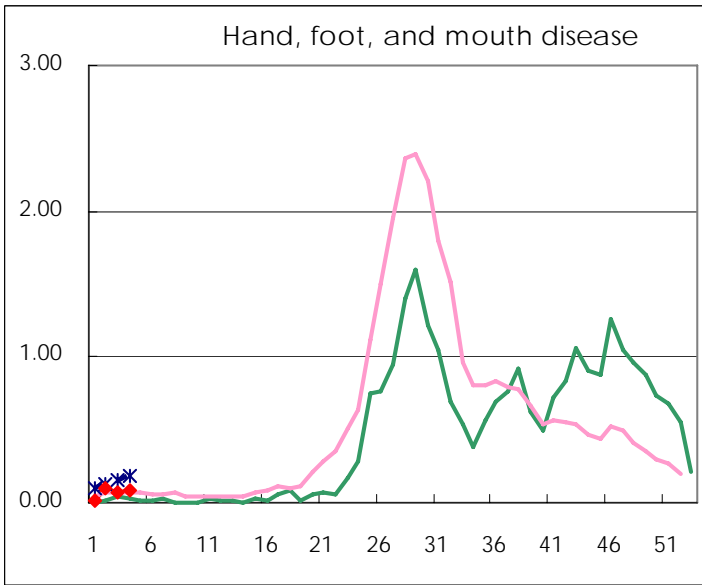
Number of patients with the diseases to be reported  
by the designated clinics and hospitals

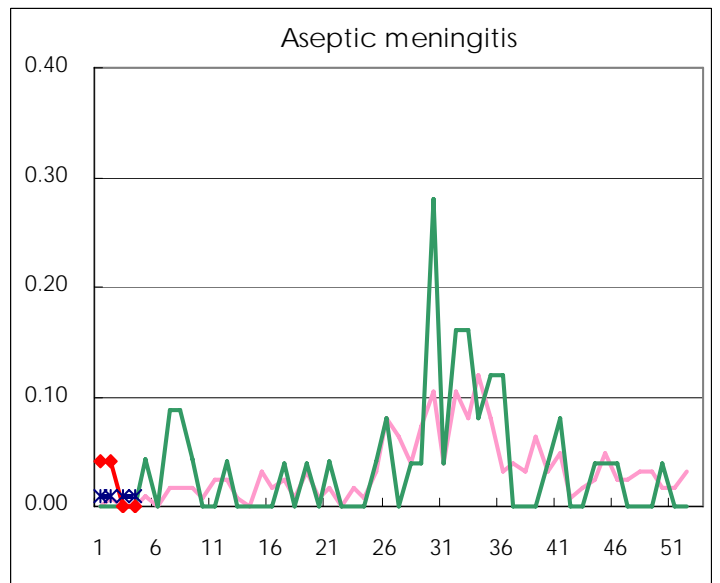
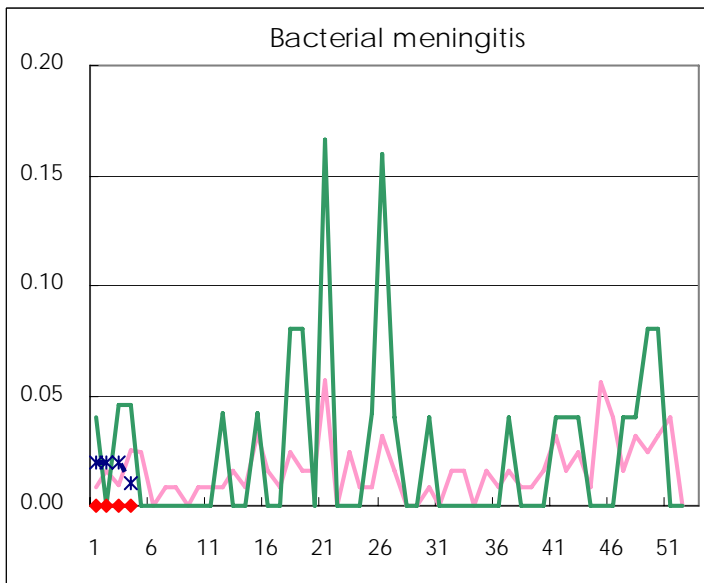
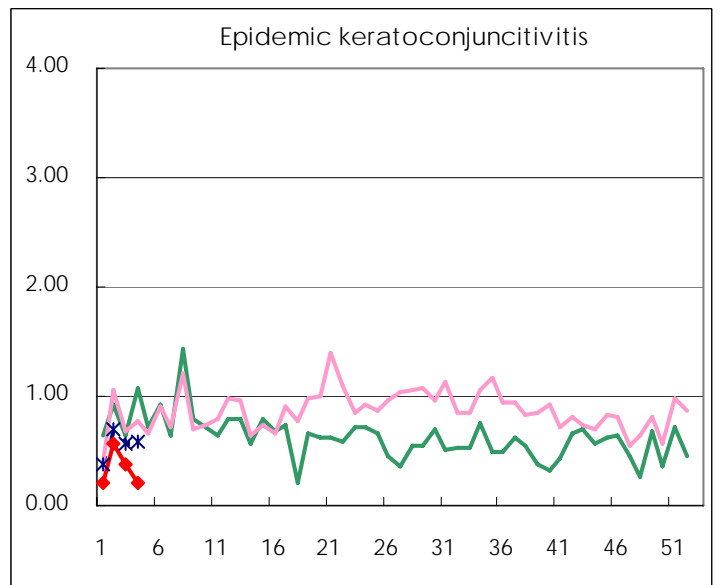
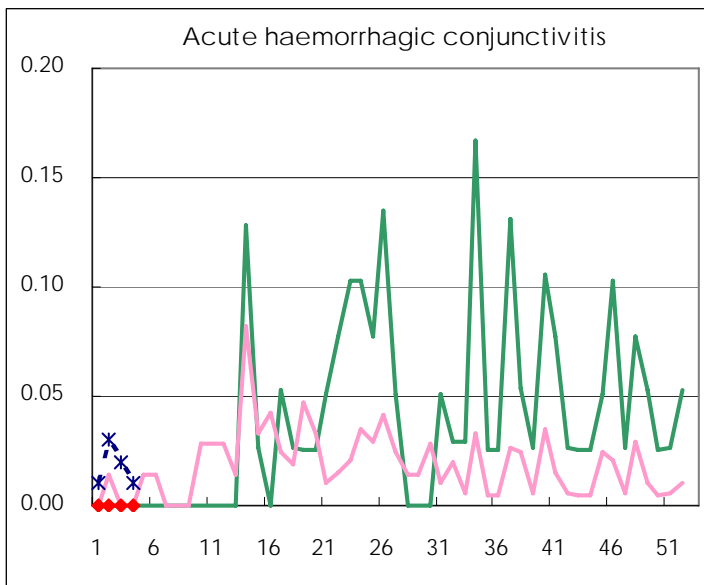
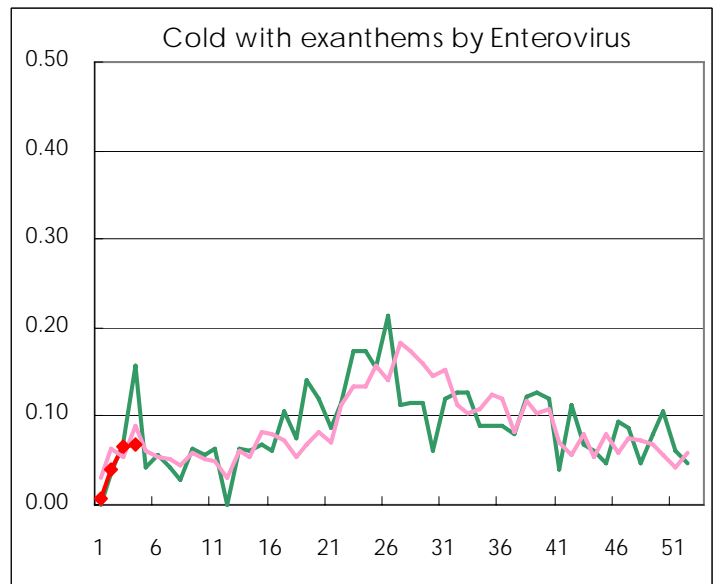
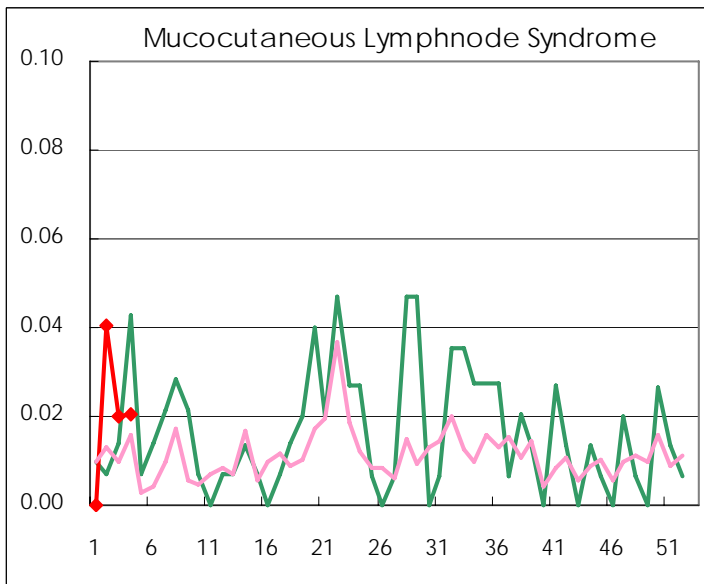
Diseases	2008				
	1st	2nd	3rd	4th	/sentinel
Respiratory syncytial virus infection	83	17	44	17	0.11
Pharyngoconjunctival fever	39	11	37	38	0.25
Group A streptococcal pharyngitis	191	34	167	225	1.50
Infectious gastroenteritis	2,051	447	1,689	1,318	8.79
Chickenpox	271	152	327	152	1.01
Hand, foot, and mouth disease	26	1	14	10	0.07
Erythema infectiosum	25	14	44	31	0.21
Exanthem subitum	64	18	79	77	0.51
Pertussis	2		1	2	0.01
Herpangina	2	1	4	2	0.01
Mumps	33	7	52	29	0.19
Cold with exanthems by Enterovirus	7	1	6	10	0.07
Mucocutaneous Lymphnode Syndrome	1		6	3	0.02
Influenza	2,220	567	1,529	1,595	5.52
Acute hemorrhagic conjunctivitis	2				
Epidemic keratoconjunctivitis	17	7	22	14	0.37
Bacterial meningitis					
Aseptic meningitis		1	1		
Mycoplasma pneumonia	5	3	3	6	0.25
Chlamydial pneumonia (excluding psittacosis)	1				

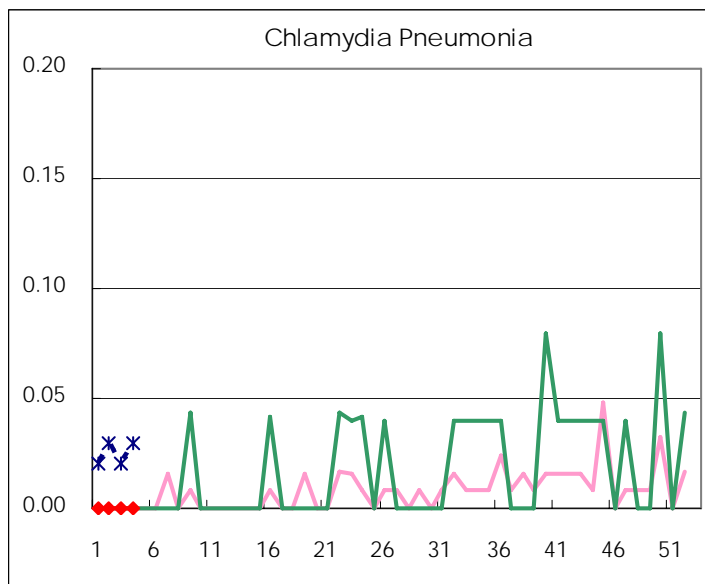
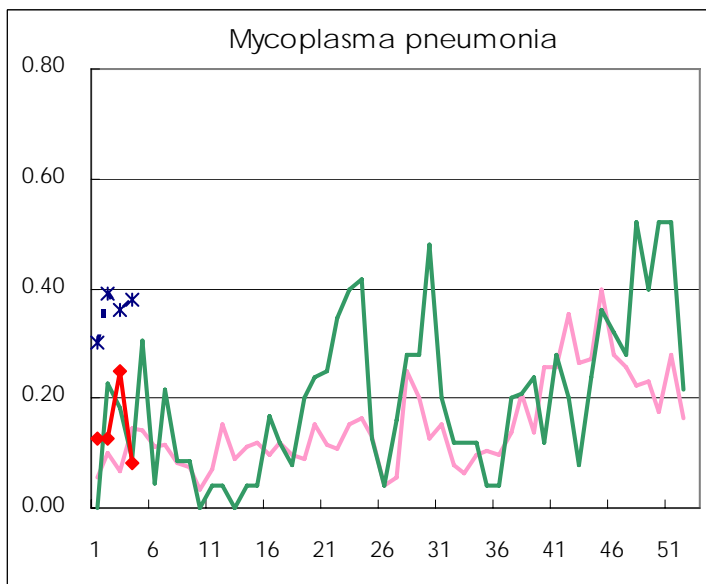
( Blank means 0. )

# Disease Trend Graph (weekly reported cases per sentinel in comparison)









Types of sentinels	Number of sentinels	Sentinels having reported
Pediatric	150	148
Influenza	290	287
Ophthalmic	39	39
Specially-designated	24	24

**Tokyo Metropolitan Government**  
**Infectious Disease Surveillance Center**