
INFECTIOUS DISEASES WEEKLY REPORT

TOKYO IDWR

Tokyo Metropolitan Infectious Disease Surveillance Center

21 February 2008 / Number 7

Surveillance System in Tokyo, Japan

The infectious diseases which all physicians must report

All physicians must report to health centers the incidence of the diseases which are shown at page one. Health centers electronically report the individual cases to Tokyo Metropolitan Infectious Disease Surveillance Center.

The infectious diseases required to be reported by the sentinels

The numbers of patients who visit the sentinel clinics or hospitals during a week are reported to health centers in Tokyo. And they electronically report the numbers to Tokyo Metropolitan Infectious Disease Surveillance Center. We have about 400 sentinel clinics and hospitals in Tokyo.

1st Week is early January and 52nd Week is end of December.

Tokyo Metropolitan Institute of Public Health
Epidemiological Information Office

TEL:81-3-3363-3213 FAX:81-3-5332-7365

e-mail:idsc@tokyo-eiken.go.jp

URL:idsc.tokyo-eiken.go.jp/

Number of patients with the diseases which all physicians must report

Category	Diseases	Tokyo				Japan		
		4th	5th	6th	7th	Cum 2008	7th	Cum 2008
I	Ebola hemorrhagic fever							
	Crimean-Congo hemorrhagic fever							
	Smallpox							
	South American hemorrhagic fever							
	Plague							
	Marburg disease							
	Lassa fever							
II	Acute poliomyelitis							
	Tuberculosis	67	53	74	37	424	213	2520
	Diphtheria							
	Severe Acute Respiratory Syndrome(SARS)							
III	Cholera							1
	Shigellosis	2	1			9	2	40
	Enterohemorrhagic Escherichia coli infection	1	1			3	12	88
	Typhoid fever	1	1			3		4
	Paratyphoid fever					1	1	3
IV	Hepatitis E	1				1	1	6
	West Nile fever							
	Hepatitis A	1	2			4	5	28
	Echinococcosis							3
	Yellow fever							
	Psittacosis							
	Omsk hemorrhagic fever							
	Relapsing fever							
	Kyasanur forest disease							
	Q fever							
	Rabies							
	Coccidioidomycosis							
	Monkeypox							
	Hemorrhagic fever with renal syndrome							
	Western equine encephalitis							
	Tick-borne encephalitis							
	Anthrax							
	Scrub typhus(Tsutsugamushi disease)			1		4	2	37
	Dengue fever			1		3	1	8
	Eastern equine encephalitis							
	Avian influenza virus infection							
	Nipah virus infection							
	Japanese spotted fever							1
	Japanese encephalitis							
	Epidemic typhus							
	Hantavirus pulmonary syndrome							
	Herpes B virus infection							
	Glanders							
	Brucellosis							
	Venezuelan equine encephalitis							
	Hendra virus infection							
	Botulism							
Malaria	1				3		4	
Tularemia								
Lyme disease								
Lyssavirus infection(excluding rabies)								
Rift valley fever								
Melioidosis								
Legionellosis	1	6	3		11	6	97	
Leptospirosis								
Rocky mountain spotted fever								

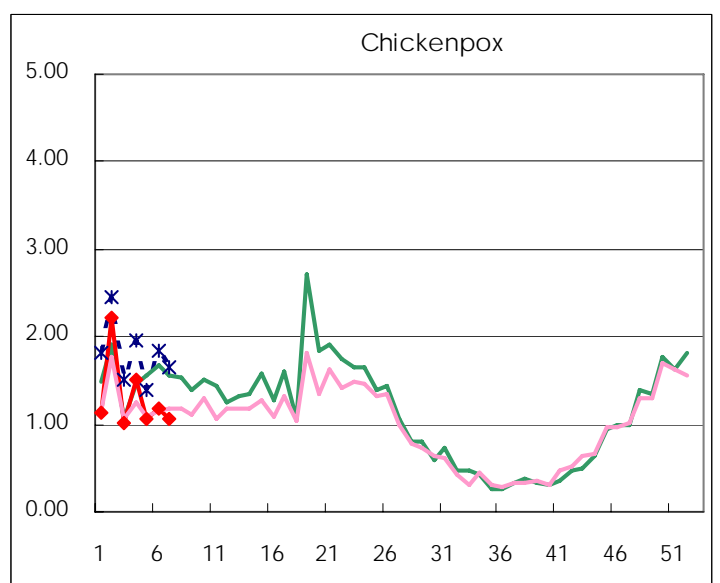
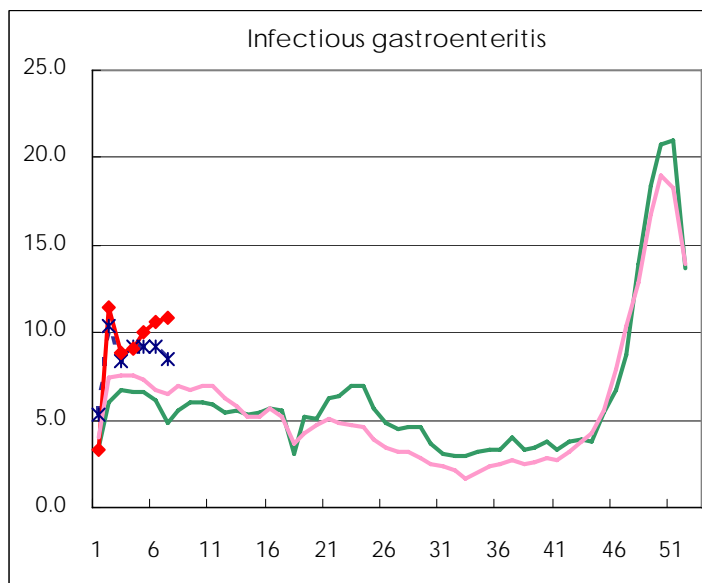
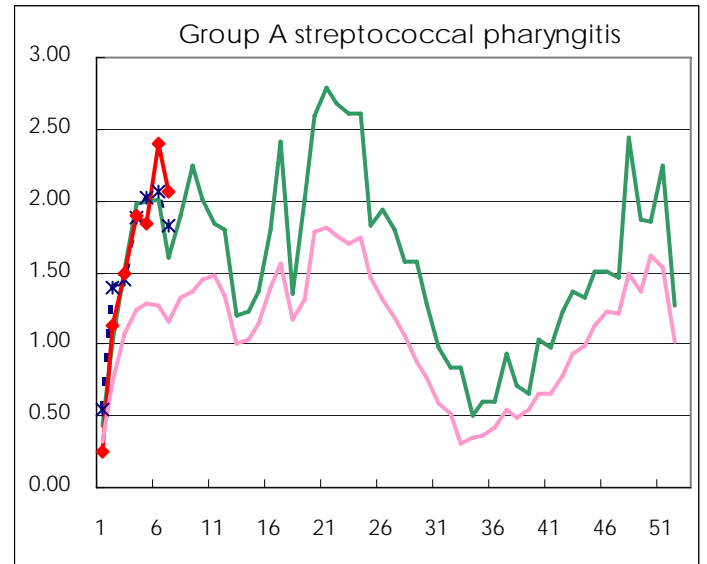
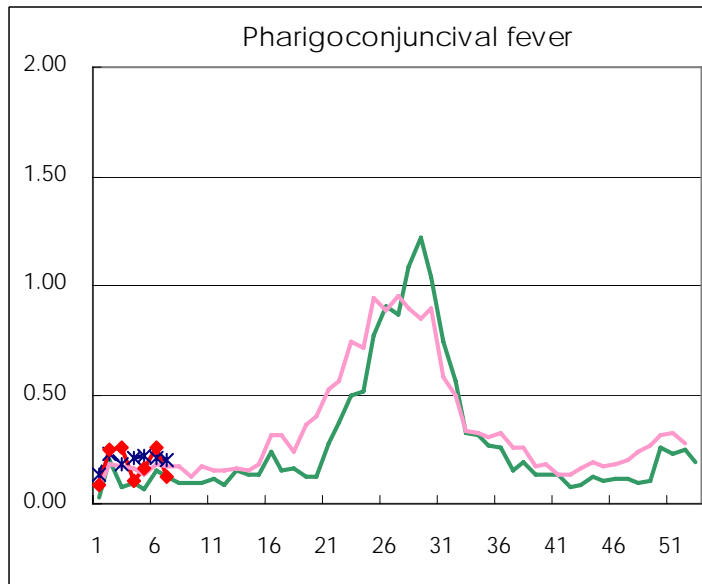
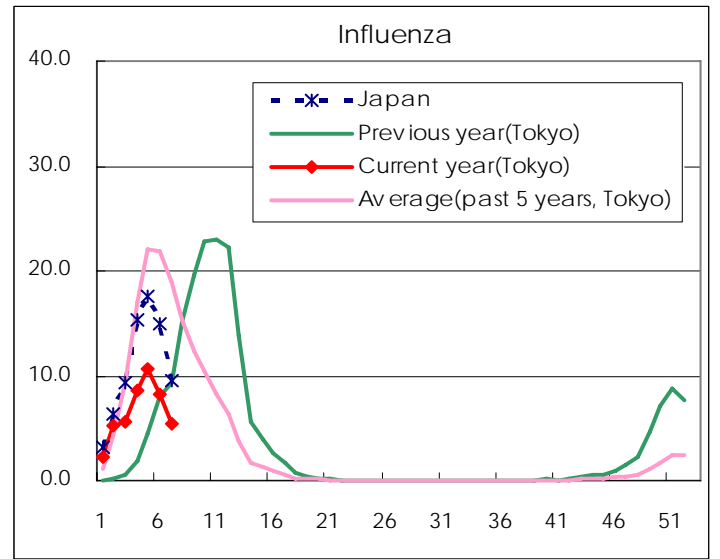
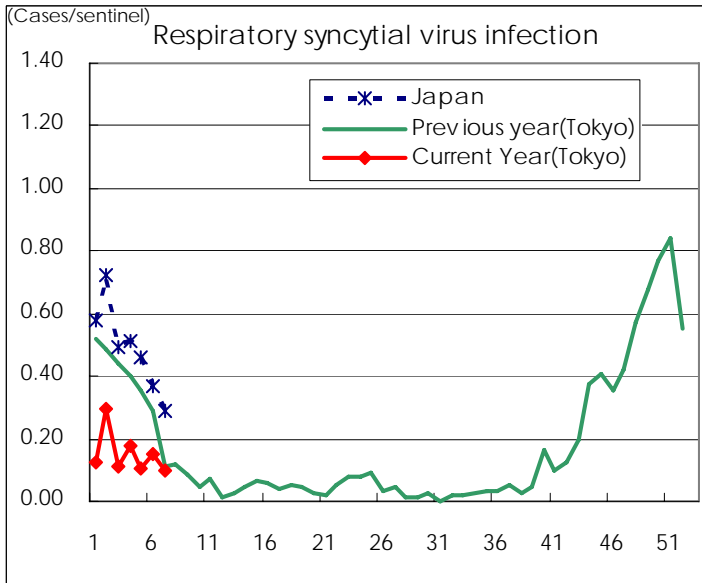
Category	Diseases	Tokyo					Japan	
		4th	5th	6th	7th	Cum 2008	7th	Cum 2008
V	Amebiasis	8	2	4	5	25	10	94
	Viral hepatitis(excluding hepatitis A and E)		2		1	4		28
	Acute encephalitis(excluding JE and WNE)	2		1		4	4	33
	Cryptosporidiosis							
	Creutzfeldt-Jakob disease						2	15
	Severe invasive streptococcal infections(TSLS)	1			1	5		12
	Acquired immunodeficiency syndrome (AIDS)	15	12	13	7	66	11	137
	Giardiasis		1			2		6
	Meningococcal meningitis							1
	Congenital rubella syndrome							
	Syphilis	5	3		1	14	2	71
	Tetanus					2		5
	Vancomycin-resistant S. aureus infection							
	Vancomycin-resistant Enterococcus infection		1			1		7
	Rubella	2	2		3	7	7	61
Measles	32	46	50	57	211	435	2119	
designated	Influenza (H5N1)							

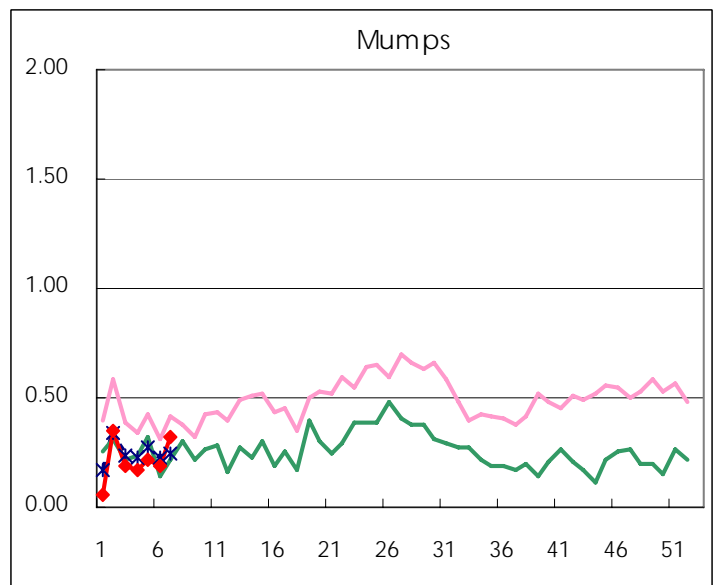
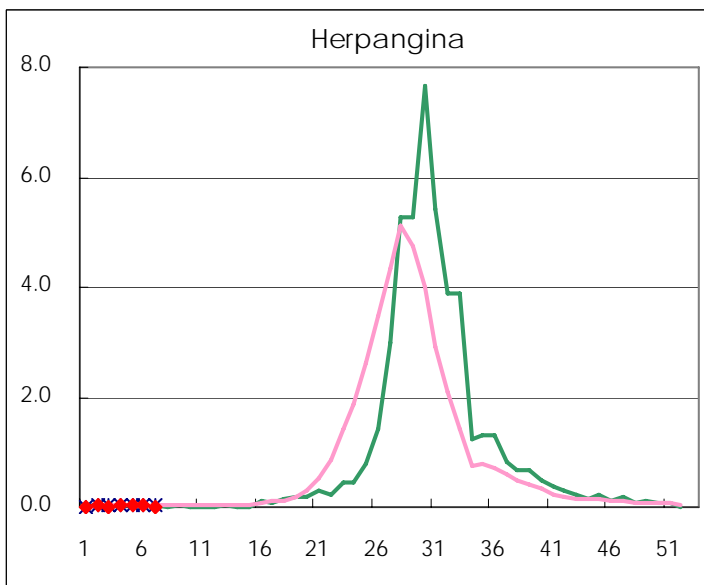
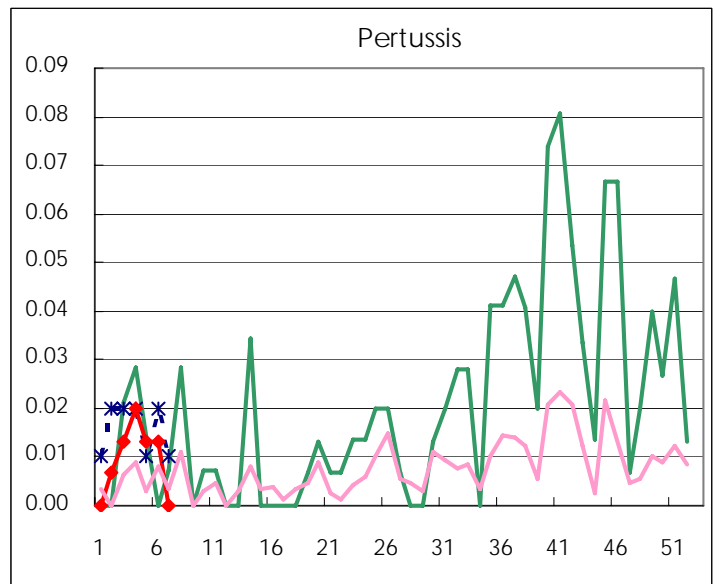
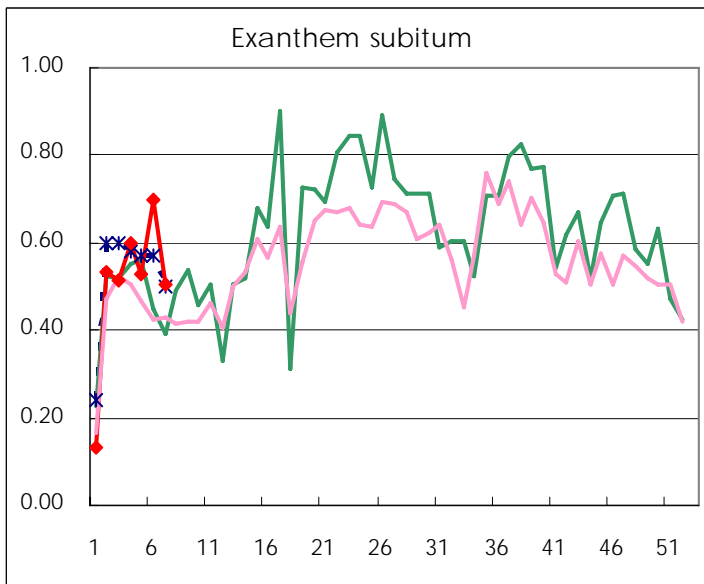
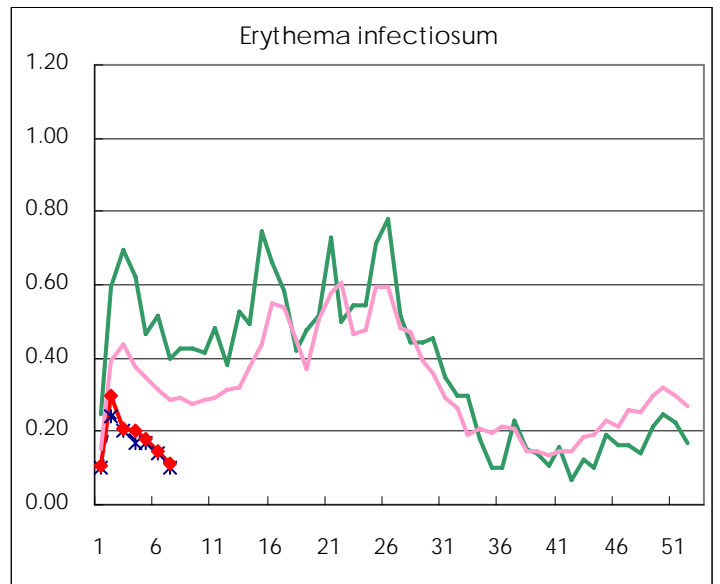
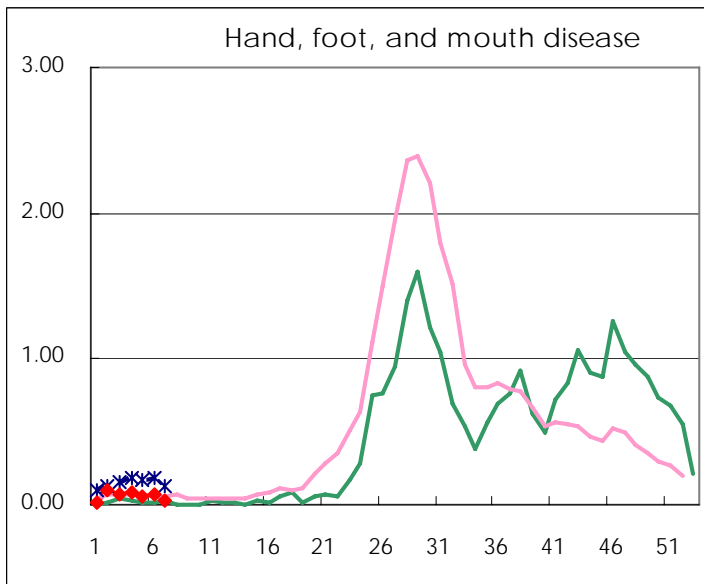
Number of patients with the diseases to be reported
by the designated clinics and hospitals

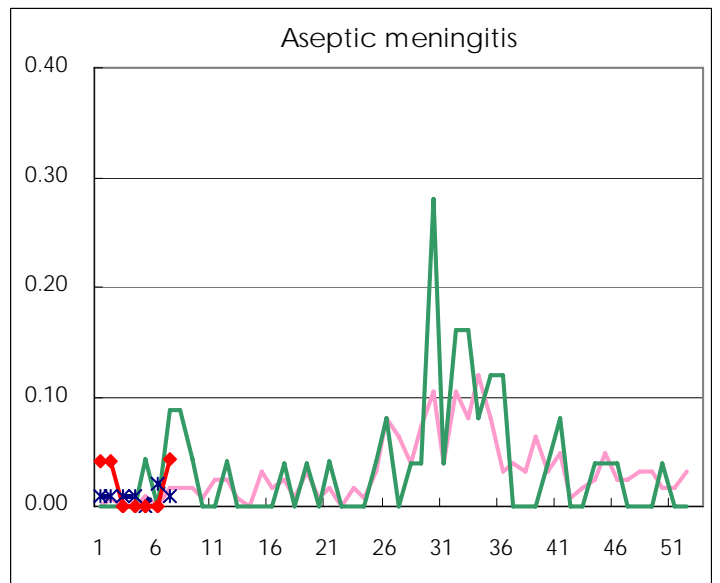
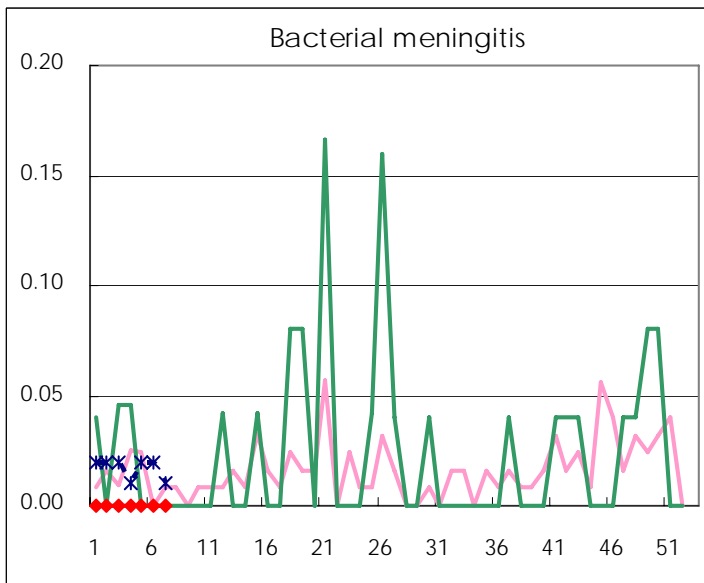
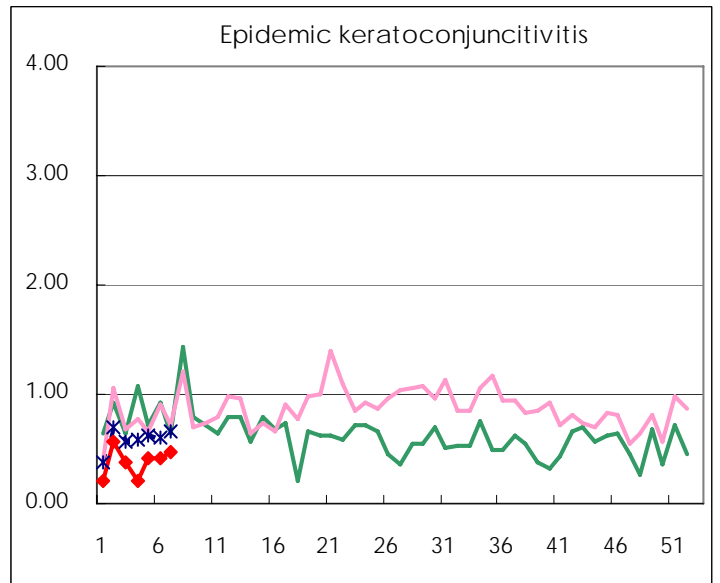
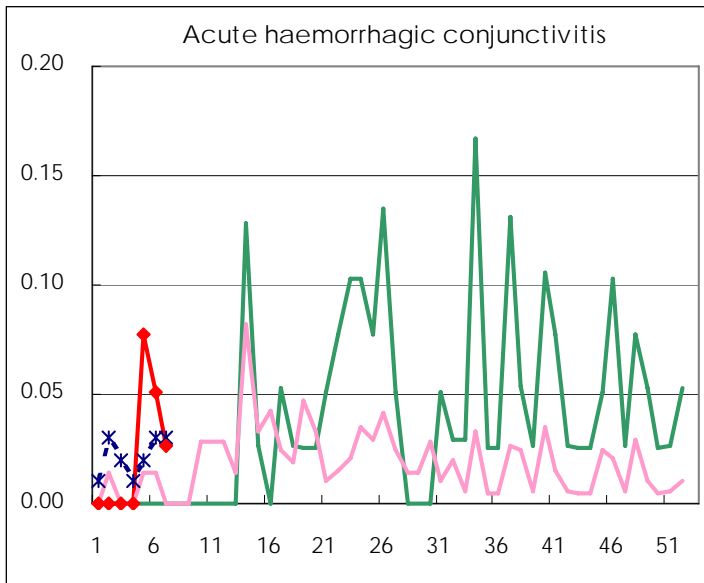
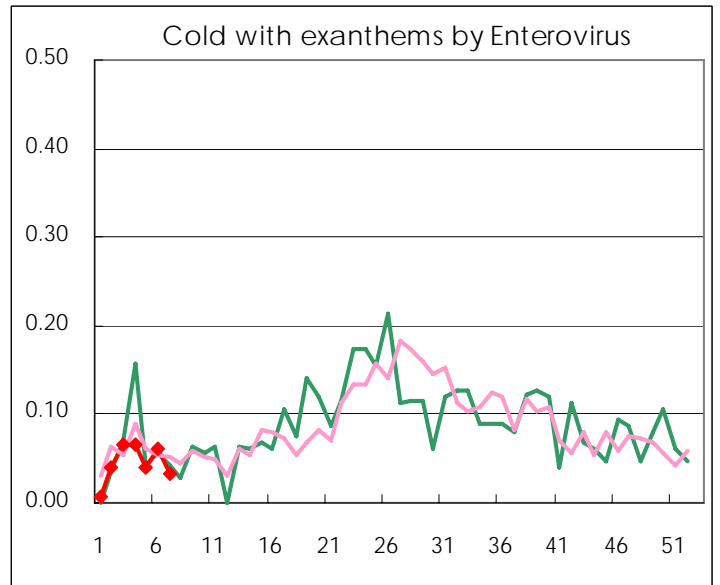
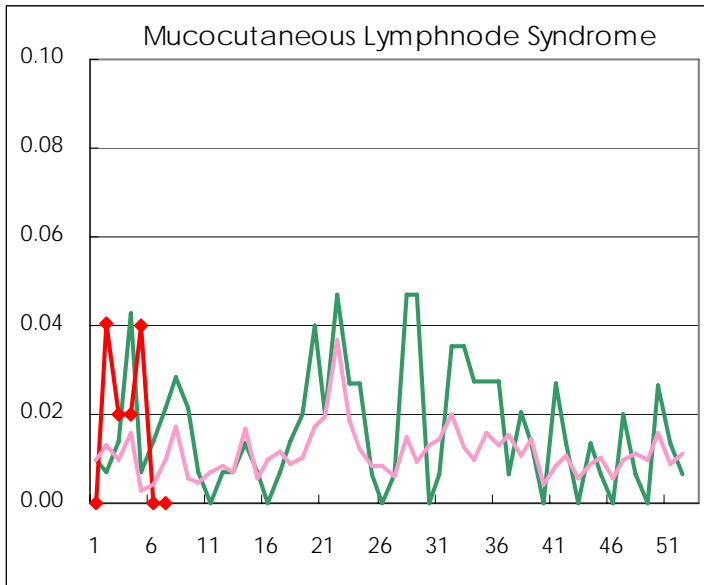
Diseases	2008				
	4th	5th	6th	7th	/sentinel
Respiratory syncytial virus infection	27	16	23	15	0.10
Pharyngoconjunctival fever	16	25	39	19	0.13
Group A streptococcal pharyngitis	285	277	361	307	2.06
Infectious gastroenteritis	1,366	1,499	1,589	1,612	10.82
Chickenpox	225	159	176	157	1.05
Hand, foot, and mouth disease	12	9	10	5	0.03
Erythema infectiosum	30	27	22	17	0.11
Exanthem subitum	90	79	105	75	0.50
Pertussis	3	2	2		
Herpangina	3	3	3	2	0.01
Mumps	26	32	29	48	0.32
Cold with exanthems by Enterovirus	10	6	9	5	0.03
Mucocutaneous Lymphnode Syndrome	3	6			
Influenza	2,475	3,052	2,371	1,568	5.44
Acute hemorrhagic conjunctivitis		3	2	1	0.03
Epidemic keratoconjunctivitis	8	16	16	18	0.47
Bacterial meningitis					
Aseptic meningitis				1	0.04
Mycoplasma pneumonia	2	2	6	5	0.22
Chlamydial pneumonia (excluding psittacosis)					

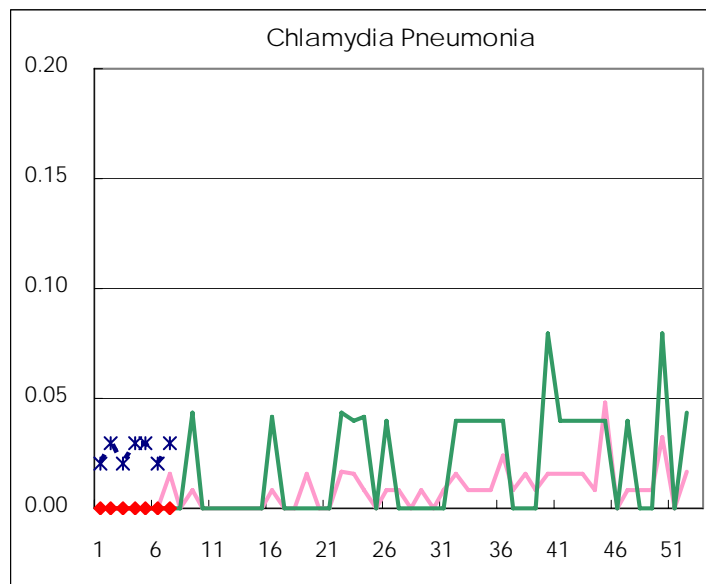
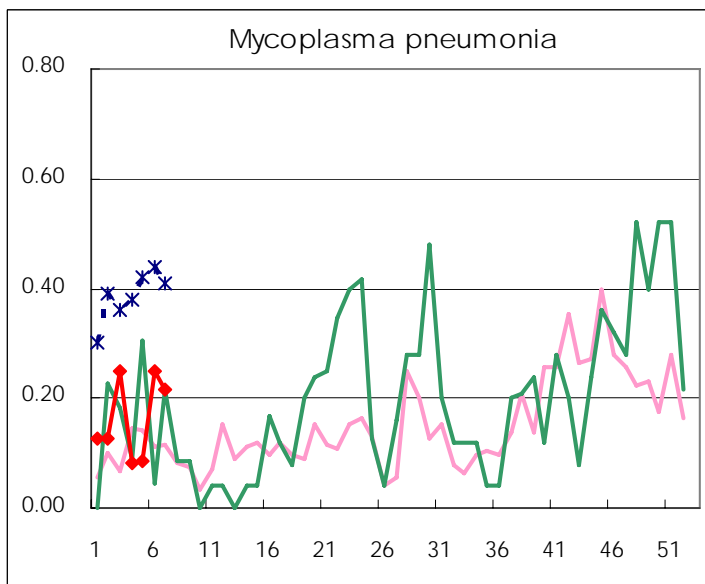
(Blank means 0.)

Disease Trend Graph (weekly reported cases per sentinel in comparison)









Types of sentinels	Number of sentinels	Sentinels having reported
Pediatric	150	149
Influenza	290	288
Ophthalmic	39	38
Specially-designated	24	23

Tokyo Metropolitan Government
Infectious Disease Surveillance Center