

---

INFECTIOUS DISEASES WEEKLY REPORT

# TOKYO IDWR

Tokyo Metropolitan Infectious Disease Surveillance Center

## 28 February 2008 / Number 8

### Surveillance System in Tokyo, Japan

The infectious diseases which all physicians must report

All physicians must report to health centers the incidence of the diseases which are shown at page one. Health centers electronically report the individual cases to Tokyo Metropolitan Infectious Disease Surveillance Center.

The infectious diseases required to be reported by the sentinels

The numbers of patients who visit the sentinel clinics or hospitals during a week are reported to health centers in Tokyo. And they electronically report the numbers to Tokyo Metropolitan Infectious Disease Surveillance Center. We have about 400 sentinel clinics and hospitals in Tokyo.

1st Week is early January and 52nd Week is end of December.

Tokyo Metropolitan Institute of Public Health  
Epidemiological Information Office

TEL:81-3-3363-3213 FAX:81-3-5332-7365

e-mail:[idsc@tokyo-eiken.go.jp](mailto:idsc@tokyo-eiken.go.jp)

URL:[idsc.tokyo-eiken.go.jp/](http://idsc.tokyo-eiken.go.jp/)

---

## Number of patients with the diseases which all physicians must report

Category	Diseases	Tokyo				Japan		
		5th	6th	7th	8th	Cum 2008	8th	Cum 2008
I	Ebola hemorrhagic fever							
	Crimean-Congo hemorrhagic fever							
	Smallpox							
	South American hemorrhagic fever							
	Plague							
	Marburg disease							
	Lassa fever							
II	Acute poliomyelitis							
	Tuberculosis	53	79	48	55	498	279	2966
	Diphtheria							
	Severe Acute Respiratory Syndrome(SARS)							
III	Cholera							1
	Shigellosis	1			1	10	2	44
	Enterohemorrhagic Escherichia coli infection	1			3	6	12	101
	Typhoid fever	1				3	2	7
	Paratyphoid fever					1	1	4
IV	Hepatitis E				1	2		6
	West Nile fever							
	Hepatitis A	2			3	7		32
	Echinococcosis							4
	Yellow fever							
	Psittacosis							
	Omsk hemorrhagic fever							
	Relapsing fever							
	Kyasanur forest disease							
	Q fever							
	Rabies							
	Coccidioidomycosis							
	Monkeypox							
	Hemorrhagic fever with renal syndrome							
	Western equine encephalitis							
	Tick-borne encephalitis							
	Anthrax							
	Scrub typhus(Tsutsugamushi disease)		1			4	1	38
	Dengue fever		1			3	2	10
	Eastern equine encephalitis							
	Avian influenza virus infection							
	Nipah virus infection							
	Japanese spotted fever							1
	Japanese encephalitis							
	Epidemic typhus							
	Hantavirus pulmonary syndrome							
	Herpes B virus infection							
	Glanders							
	Brucellosis							
	Venezuelan equine encephalitis							
	Hendra virus infection							
Botulism								
Malaria					3	1	5	
Tularemia								
Lyme disease								
Lyssavirus infection(excluding rabies)								
Rift valley fever								
Melioidosis								
Legionellosis	6	3		1	12	12	118	
Leptospirosis								
Rocky mountain spotted fever								

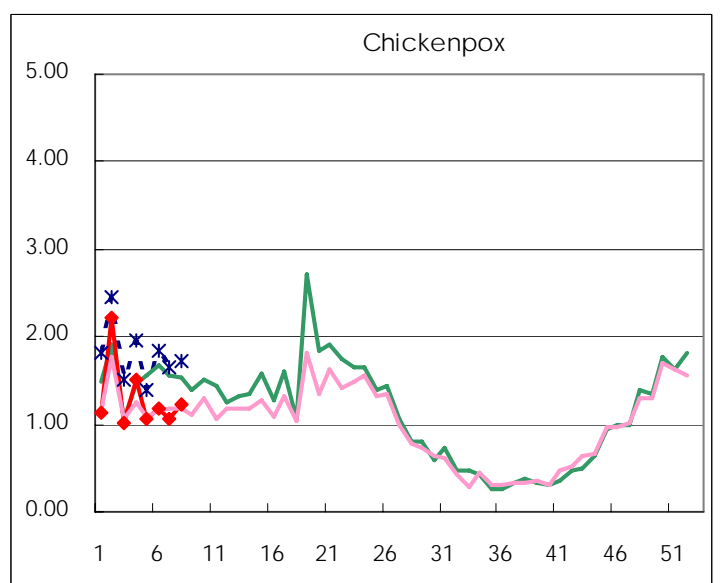
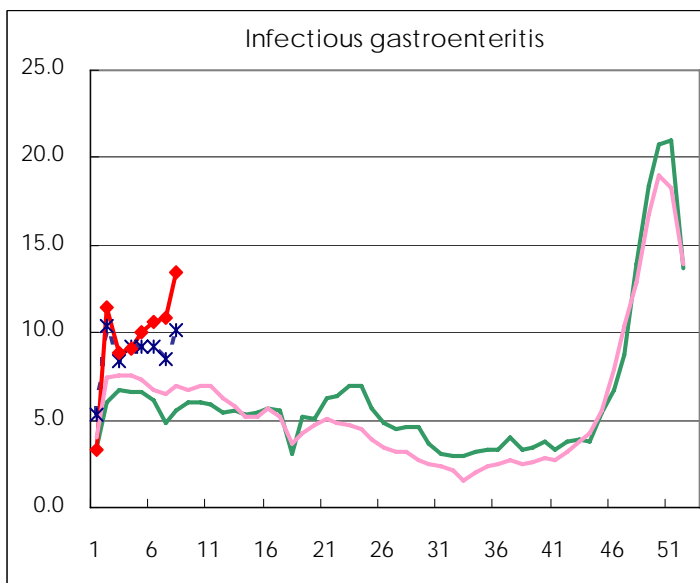
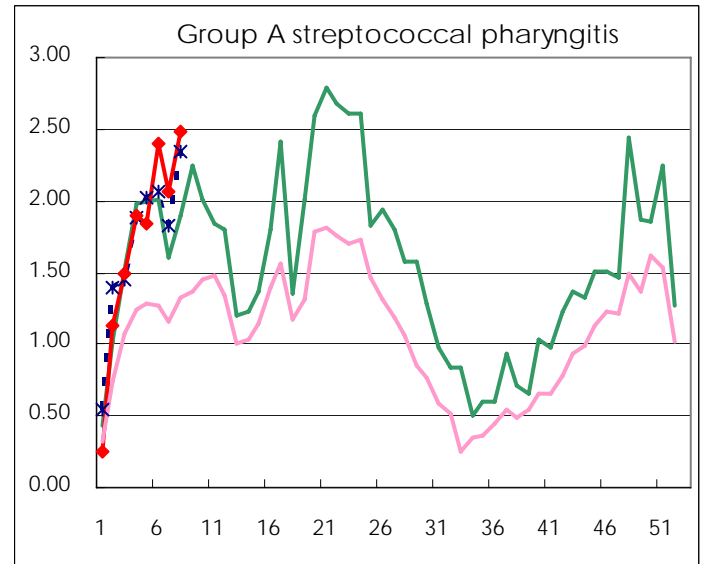
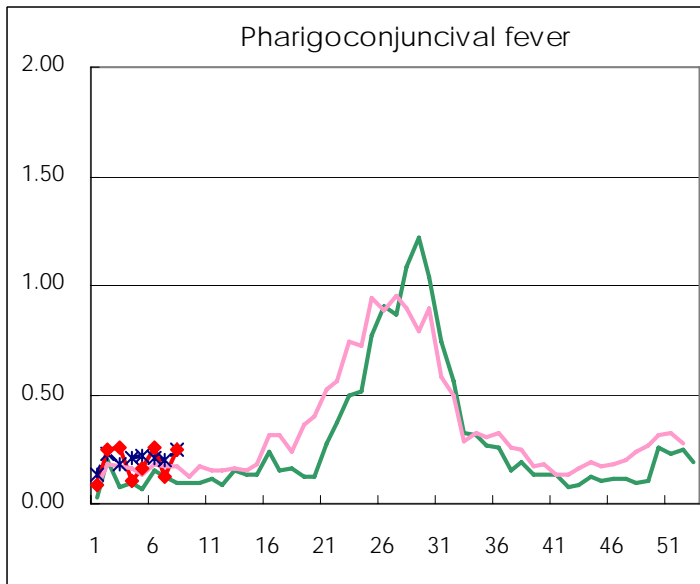
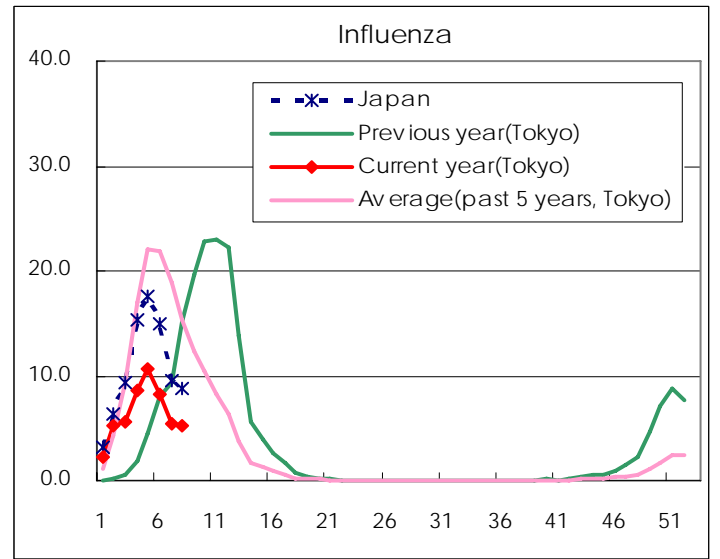
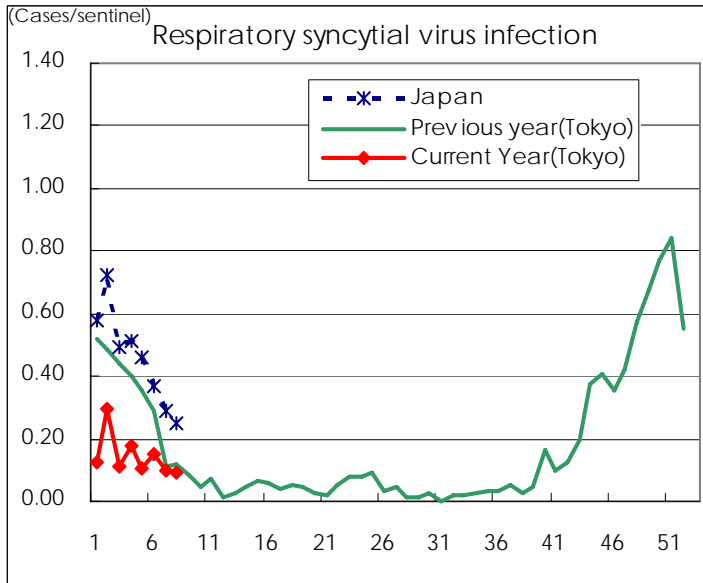
Category	Diseases	Tokyo					Japan	
		5th	6th	7th	8th	Cum 2008	8th	Cum 2008
V	Amebiasis	2	4	5	1	26	11	108
	Viral hepatitis(excluding hepatitis A and E)	2		1	1	5	4	33
	Acute encephalitis(excluding JE and WNE)		1		1	5	3	37
	Cryptosporidiosis							
	Creutzfeldt-Jakob disease						2	17
	Severe invasive streptococcal infections(TSLS)			1		5	1	14
	Acquired immunodeficiency syndrome (AIDS)	12	13	7	5	71	18	166
	Giardiasis	1				2	1	7
	Meningococcal meningitis						1	2
	Congenital rubella syndrome							
	Syphilis	3		1	4	18	13	88
	Tetanus					2	2	7
	Vancomycin-resistant S. aureus infection							
	Vancomycin-resistant Enterococcus infection	1			1	2		7
	Rubella	2		3		7	4	66
Measles	46	49	56	77	286	370	2638	
designated	Influenza (H5N1)							

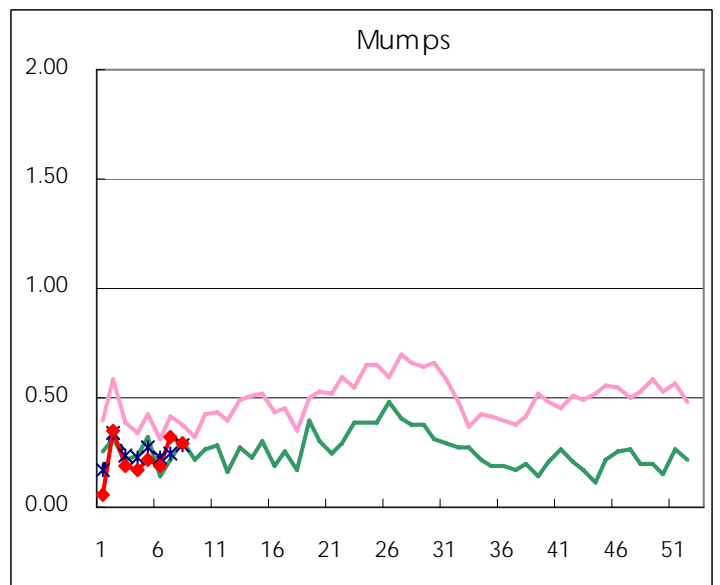
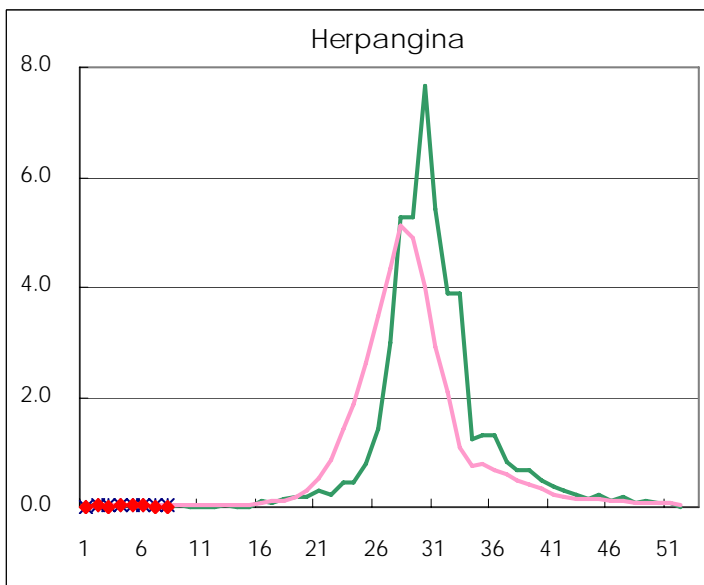
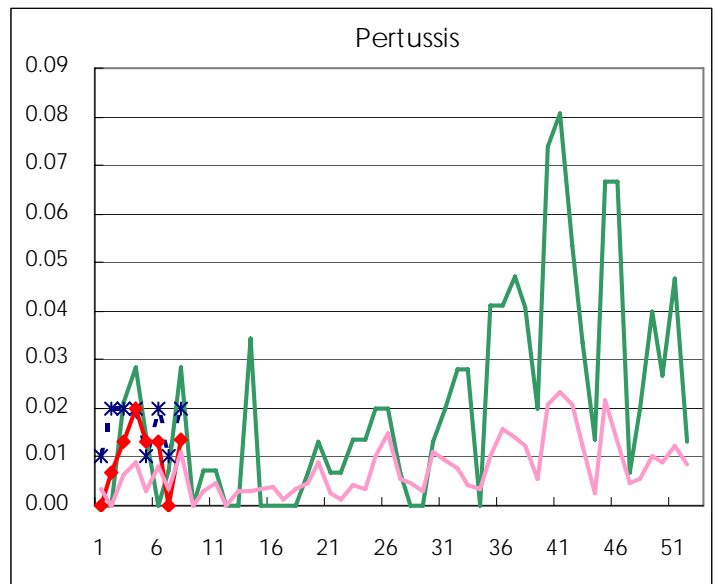
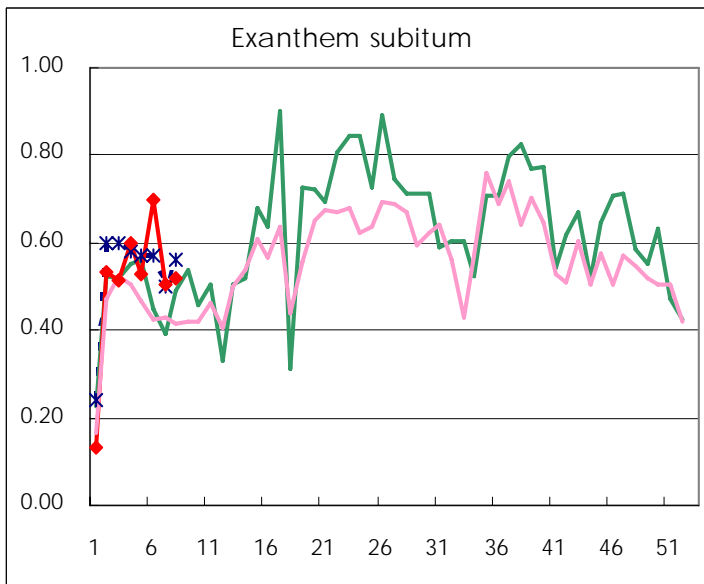
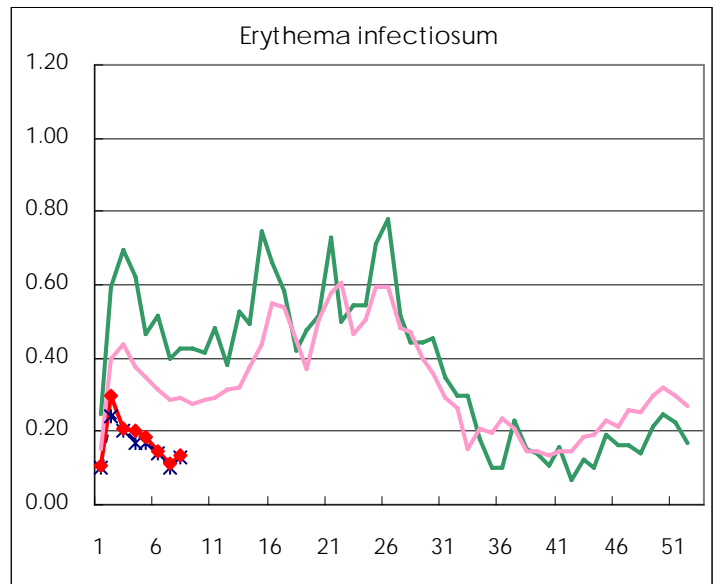
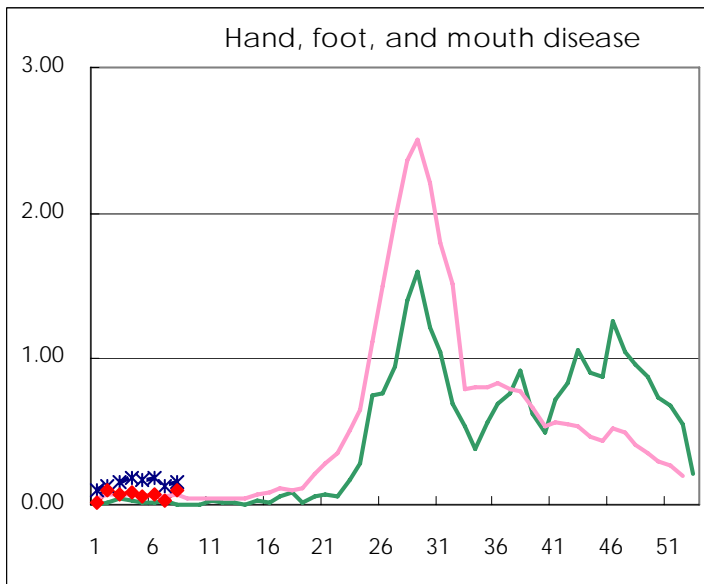
Number of patients with the diseases to be reported  
by the designated clinics and hospitals

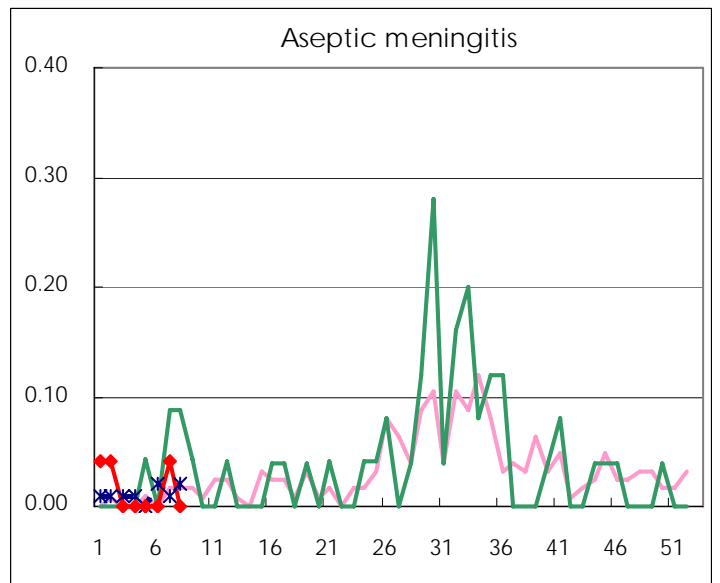
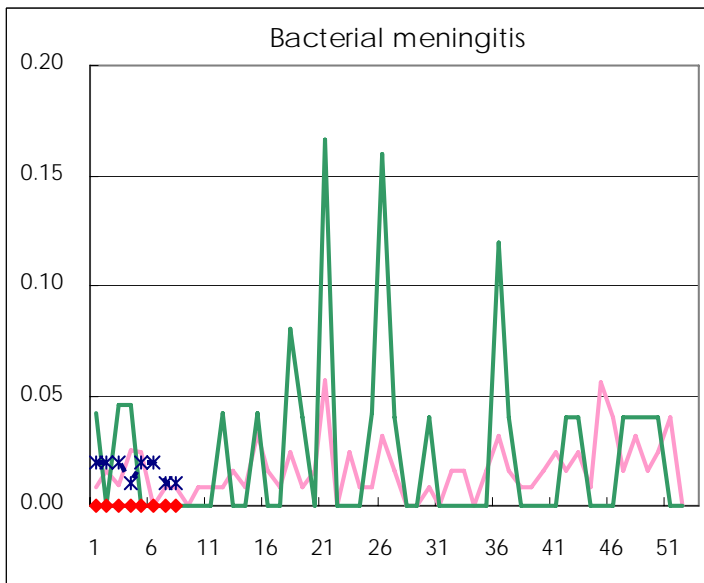
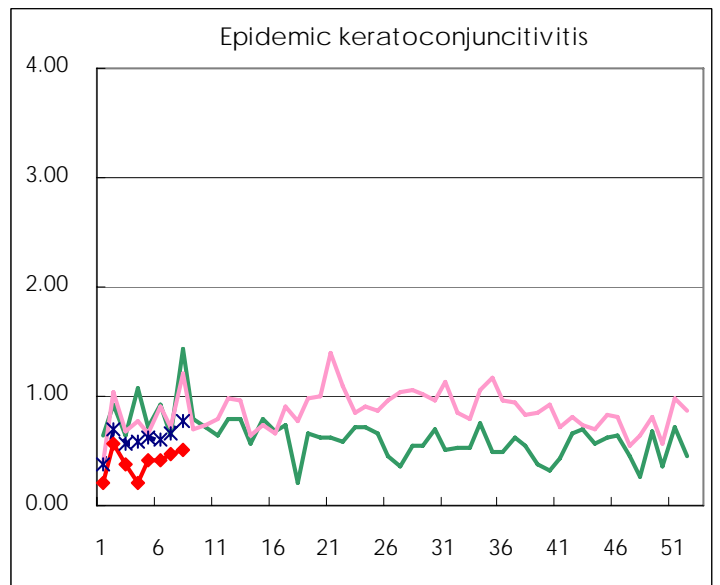
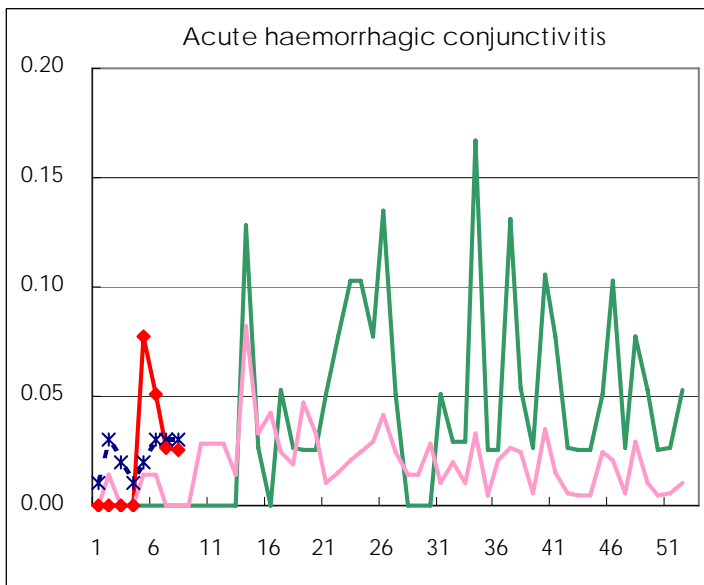
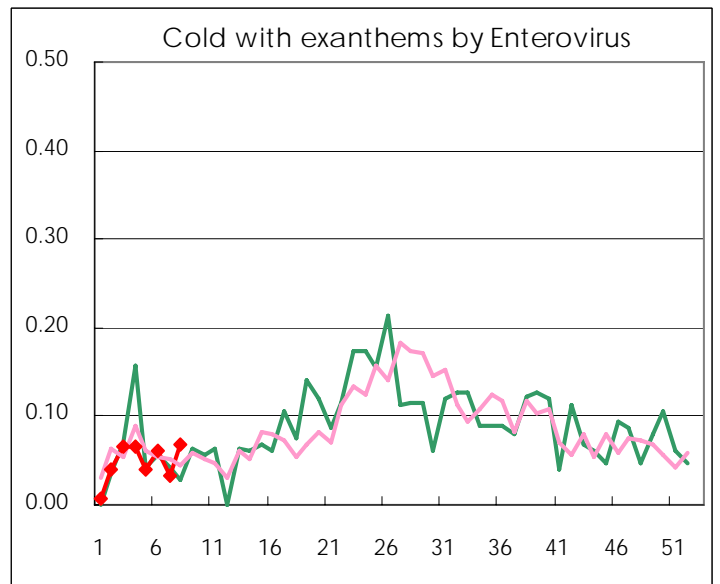
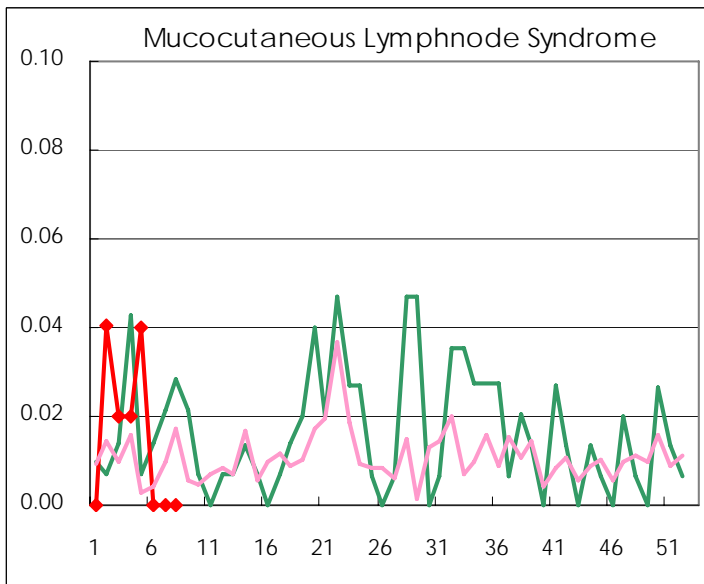
Diseases	2008				
	5th	6th	7th	8th	/sentinel
Respiratory syncytial virus infection	16	23	15	14	0.09
Pharyngoconjunctival fever	25	39	19	37	0.25
Group A streptococcal pharyngitis	277	361	307	371	2.49
Infectious gastroenteritis	1,509	1,589	1,612	1,999	13.42
Chickenpox	160	176	157	183	1.23
Hand, foot, and mouth disease	9	10	5	15	0.10
Erythema infectiosum	28	22	17	20	0.13
Exanthem subitum	79	105	75	77	0.52
Pertussis	2	2		2	0.01
Herpangina	3	3	2	2	0.01
Mumps	32	29	48	44	0.30
Cold with exanthems by Enterovirus	6	9	5	10	0.07
Mucocutaneous Lymphnode Syndrome	6				
Influenza	3,052	2,371	1,568	1,516	5.26
Acute hemorrhagic conjunctivitis	3	2	1	1	0.03
Epidemic keratoconjunctivitis	16	16	18	20	0.51
Bacterial meningitis					
Aseptic meningitis			1		
Mycoplasma pneumonia	2	6	5	5	0.21
Chlamydial pneumonia (excluding psittacosis)					

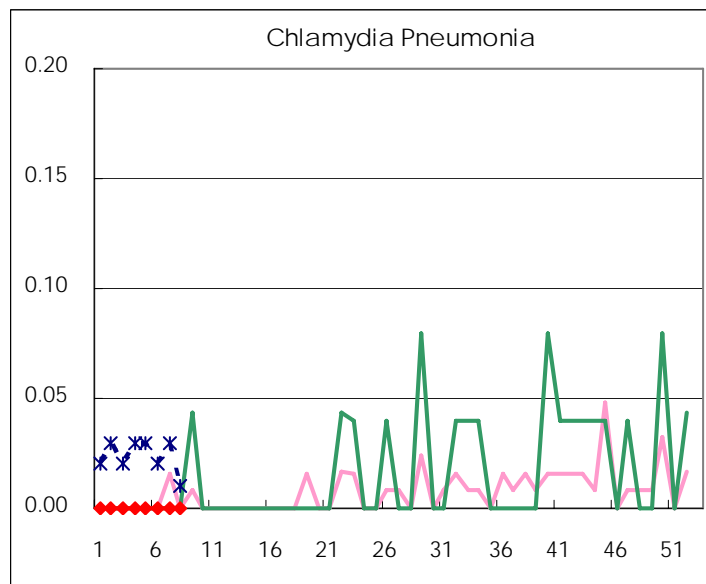
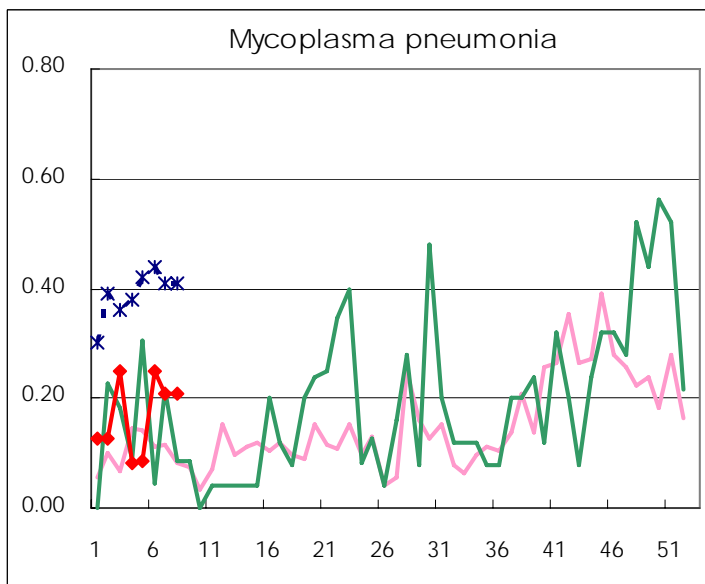
( Blank means 0. )

# Disease Trend Graph (weekly reported cases per sentinel in comparison)









Types of sentinels	Number of sentinels	Sentinels having reported
Pediatric	150	149
Influenza	290	288
Ophthalmic	39	39
Specially-designated	24	24

**Tokyo Metropolitan Government**  
**Infectious Disease Surveillance Center**