
INFECTIOUS DISEASES WEEKLY REPORT

TOKYO IDWR

Tokyo Metropolitan Infectious Disease Surveillance Center

13 March 2008 / Number 10

Surveillance System in Tokyo, Japan

The infectious diseases which all physicians must report

All physicians must report to health centers the incidence of the diseases which are shown at page one. Health centers electronically report the individual cases to Tokyo Metropolitan Infectious Disease Surveillance Center.

The infectious diseases required to be reported by the sentinels

The numbers of patients who visit the sentinel clinics or hospitals during a week are reported to health centers in Tokyo. And they electronically report the numbers to Tokyo Metropolitan Infectious Disease Surveillance Center. We have about 400 sentinel clinics and hospitals in Tokyo.

1st Week is early January and 52nd Week is end of December.

Tokyo Metropolitan Institute of Public Health
Epidemiological Information Office

TEL:81-3-3363-3213 FAX:81-3-5332-7365

e-mail:idsc@tokyo-eiken.go.jp

URL:idsc.tokyo-eiken.go.jp/

Number of patients with the diseases which all physicians must report

Category	Diseases	Tokyo				Japan		
		7th	8th	9th	10th	Cum 2008	10th	Cum 2008
I	Ebola hemorrhagic fever							
	Crimean-Congo hemorrhagic fever							
	Smallpox							
	South American hemorrhagic fever							
	Plague							
	Marburg disease							
	Lassa fever							
II	Acute poliomyelitis							1
	Tuberculosis	53	74	69	52	648	275	3953
	Diphtheria							
	Severe Acute Respiratory Syndrome(SARS)							
III	Cholera							2
	Shigellosis		1		2	12	11	60
	Enterohemorrhagic Escherichia coli infection		3		2	8	15	125
	Typhoid fever					3	2	9
	Paratyphoid fever					1		6
IV	Hepatitis E		1			2		9
	West Nile fever							
	Hepatitis A		3	1	1	9	1	39
	Echinococcosis							4
	Yellow fever							
	Psittacosis							
	Omsk hemorrhagic fever							
	Relapsing fever							
	Kyasanur forest disease							
	Q fever							
	Rabies							
	Coccidioidomycosis							
	Monkeypox							
	Hemorrhagic fever with renal syndrome							
	Western equine encephalitis							
	Tick-borne encephalitis							
	Anthrax							
	Scrub typhus(Tsutsugamushi disease)					4		38
	Dengue fever					3		11
	Eastern equine encephalitis							
	Avian influenza virus infection							
	Nipah virus infection							
	Japanese spotted fever							1
	Japanese encephalitis							
	Epidemic typhus							
	Hantavirus pulmonary syndrome							
	Herpes B virus infection							
	Glanders							
	Brucellosis							
	Venezuelan equine encephalitis							
	Hendra virus infection							
	Botulism							
Malaria			1		4	1	6	
Tularemia						1	2	
Lyme disease							1	
Lyssavirus infection(excluding rabies)								
Rift valley fever								
Melioidosis								
Legionellosis		1		2	14	13	148	
Leptospirosis								
Rocky mountain spotted fever								

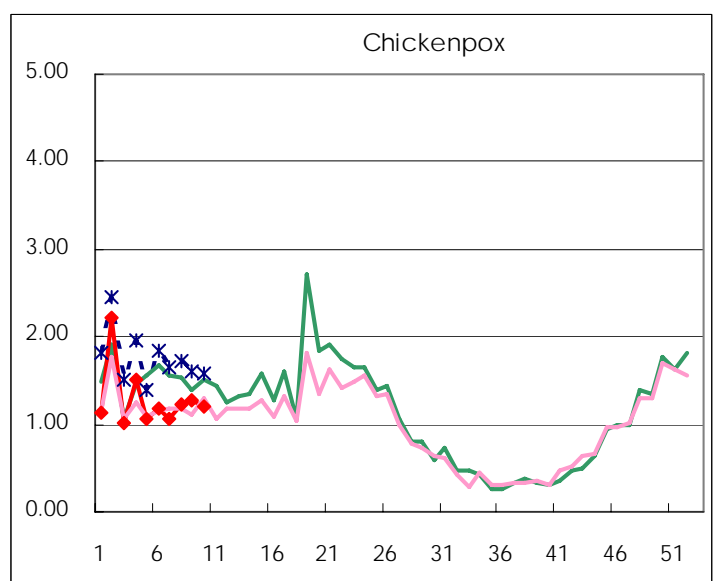
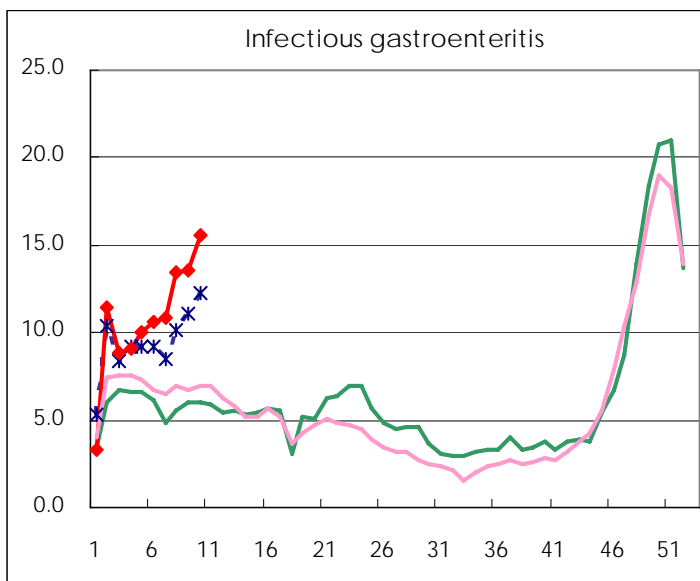
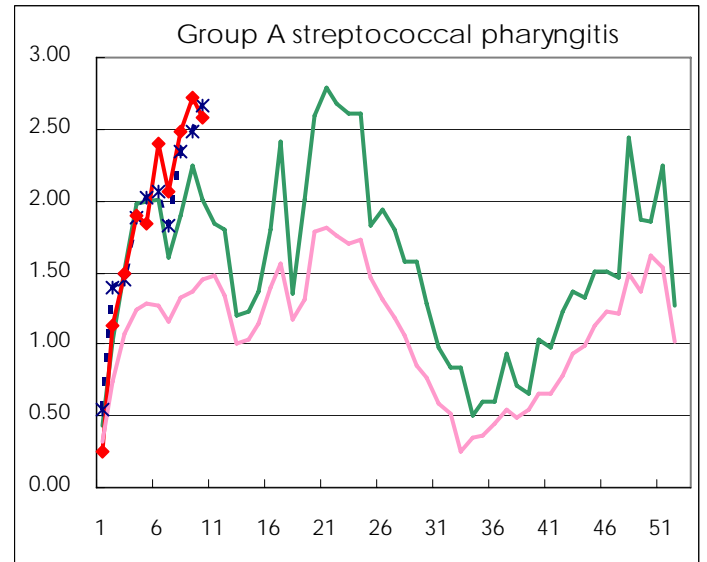
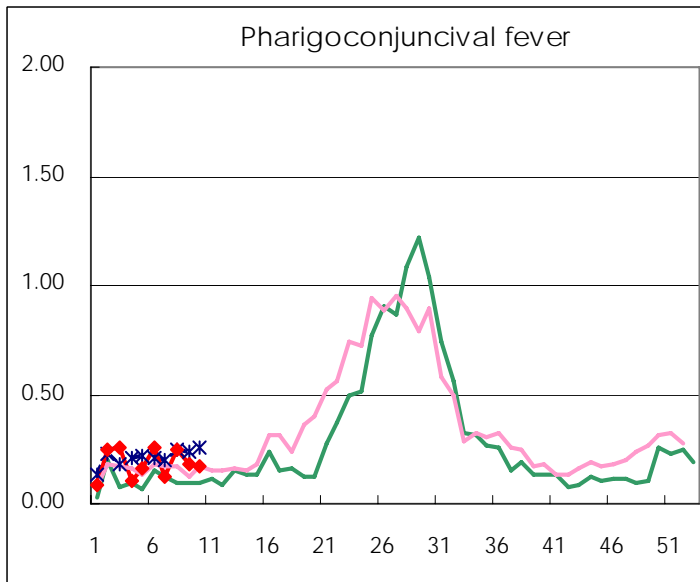
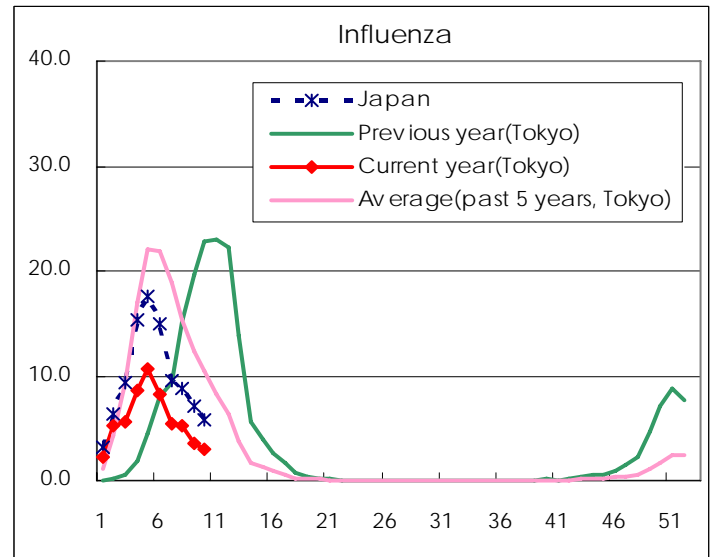
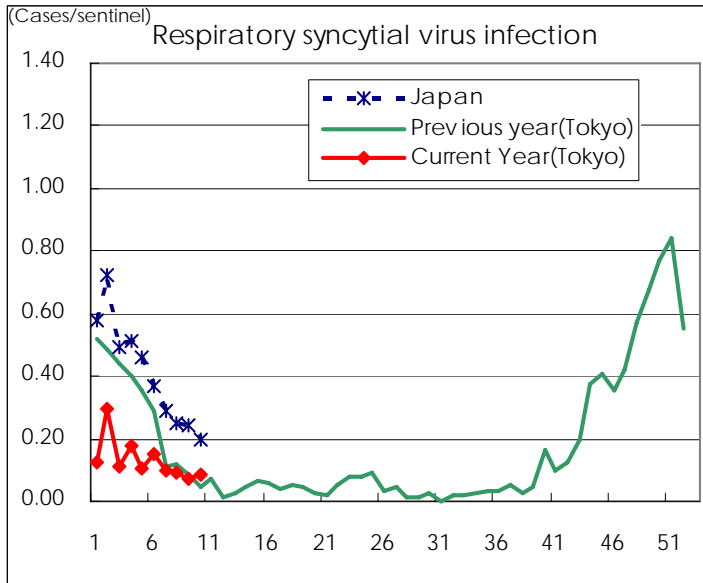
Category	Diseases	Tokyo					Japan	
		7th	8th	9th	10th	Cum 2008	10th	Cum 2008
V	Amebiasis	5	1	4	3	33	15	149
	Viral hepatitis(excluding hepatitis A and E)	1	1	1		6	1	35
	Acute encephalitis(excluding JE and WNE)		1			5	1	48
	Cryptosporidiosis							
	Creutzfeldt-Jakob disease				1	1	1	23
	Severe invasive streptococcal infections(TSLS)	1		1		6	2	21
	Acquired immunodeficiency syndrome (AIDS)	7	6	20	11	103	31	246
	Giardiasis			1		3	3	13
	Meningococcal meningitis							3
	Congenital rubella syndrome							
	Syphilis	1	4	6	3	27	4	125
	Tetanus					2	1	12
	Vancomycin-resistant S. aureus infection							
	Vancomycin-resistant Enterococcus infection		1			2		8
	Rubella	3		1	4	12	6	84
Measles	56	76	105	78	468	387	3649	
designated	Influenza (H5N1)							

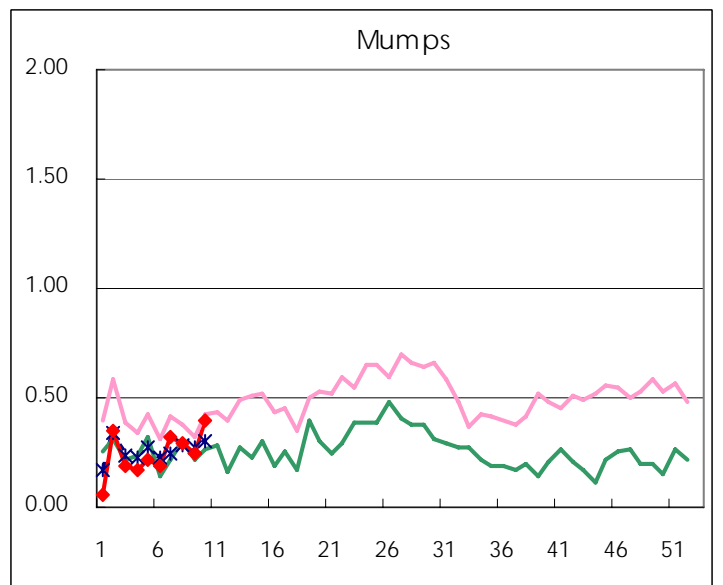
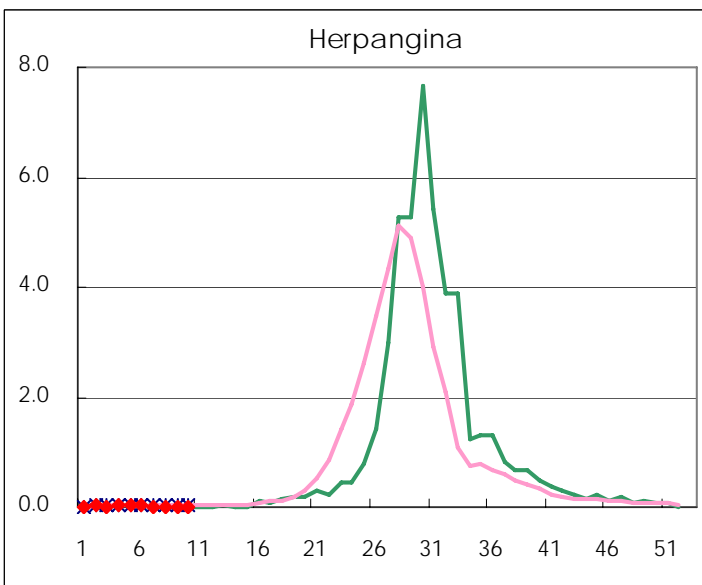
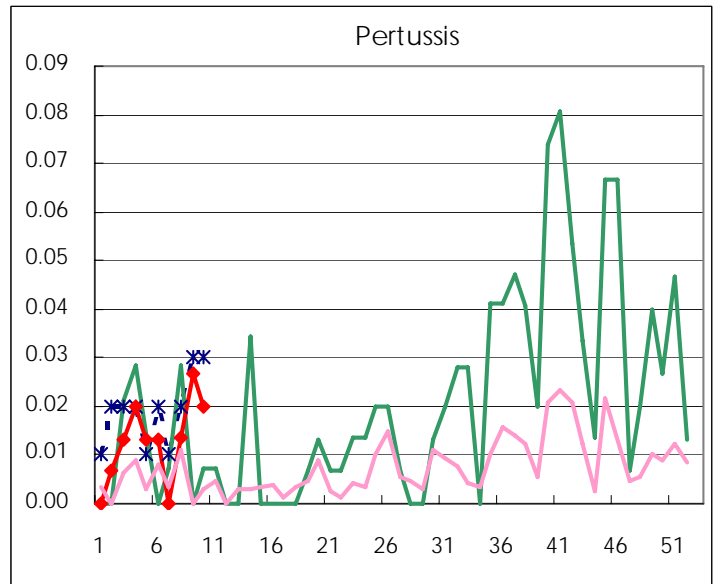
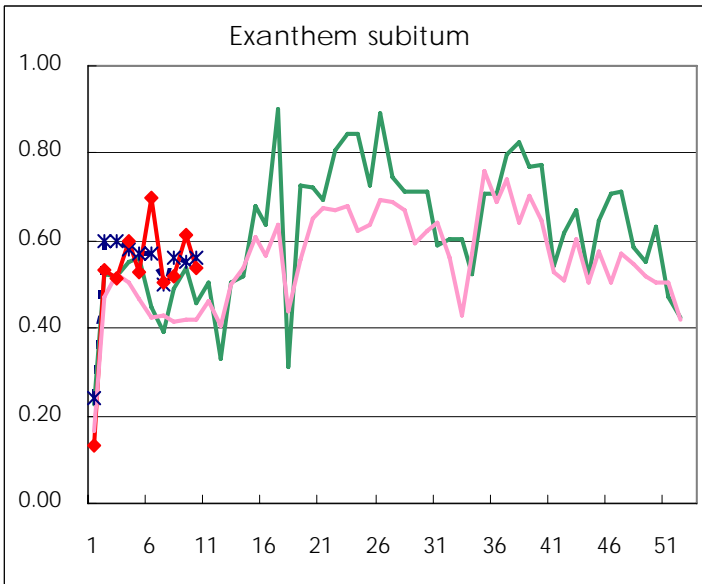
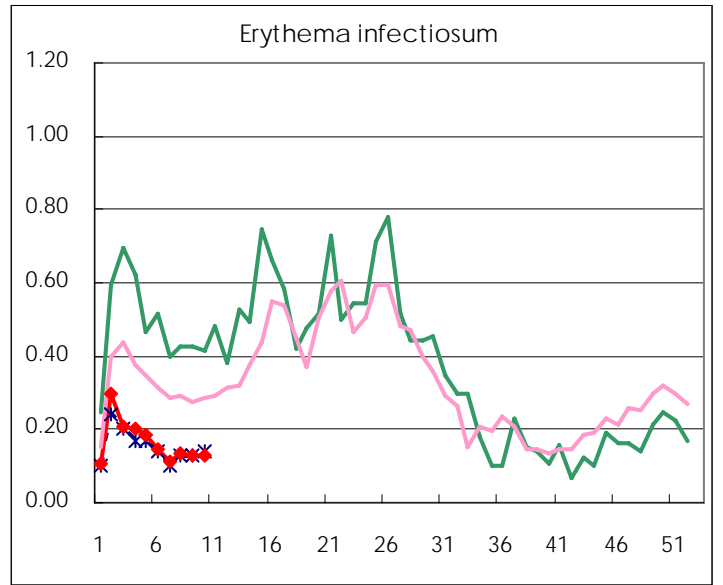
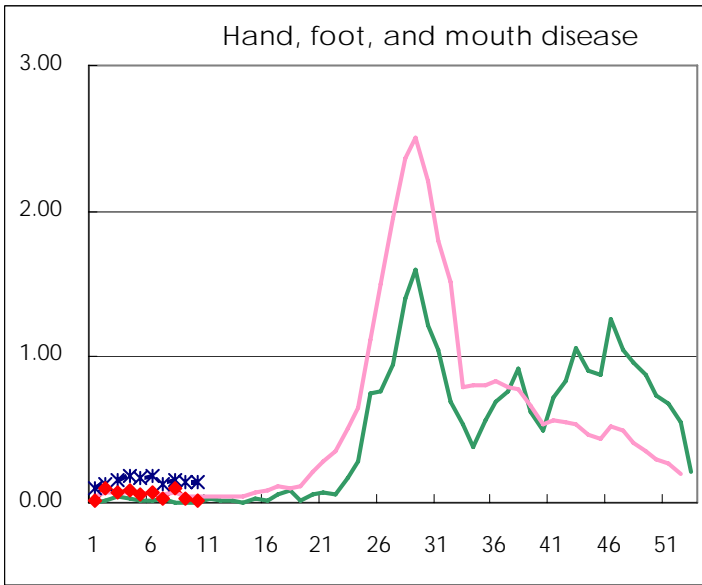
Number of patients with the diseases to be reported
by the designated clinics and hospitals

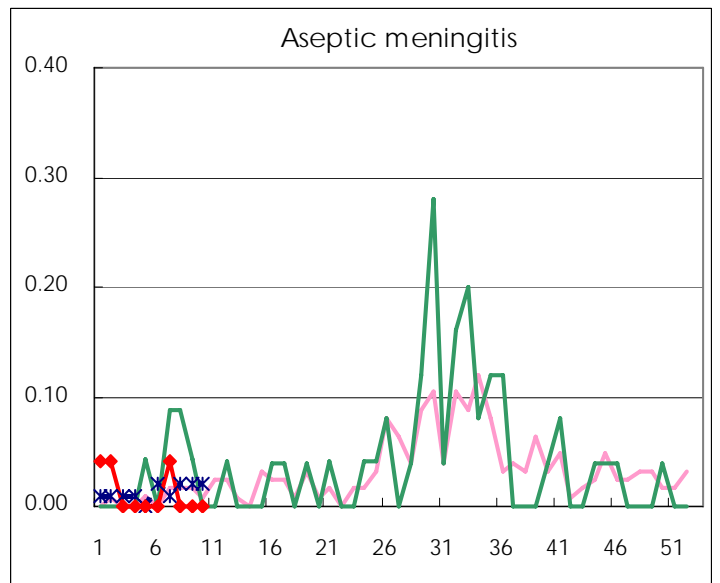
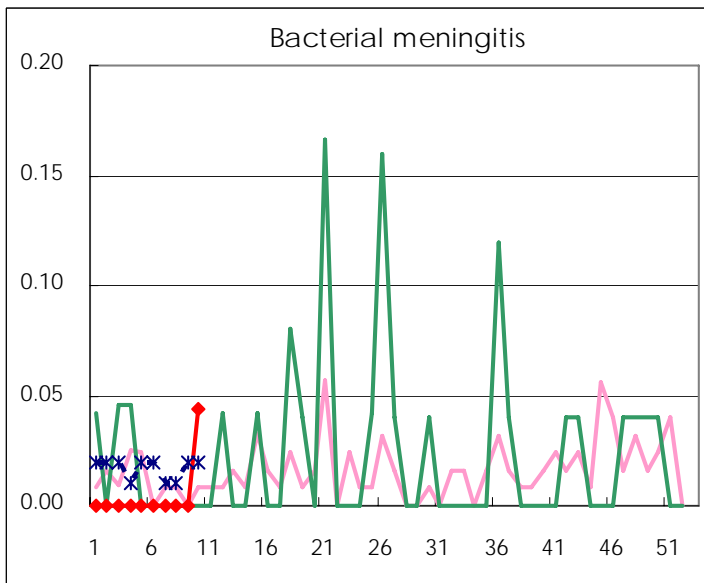
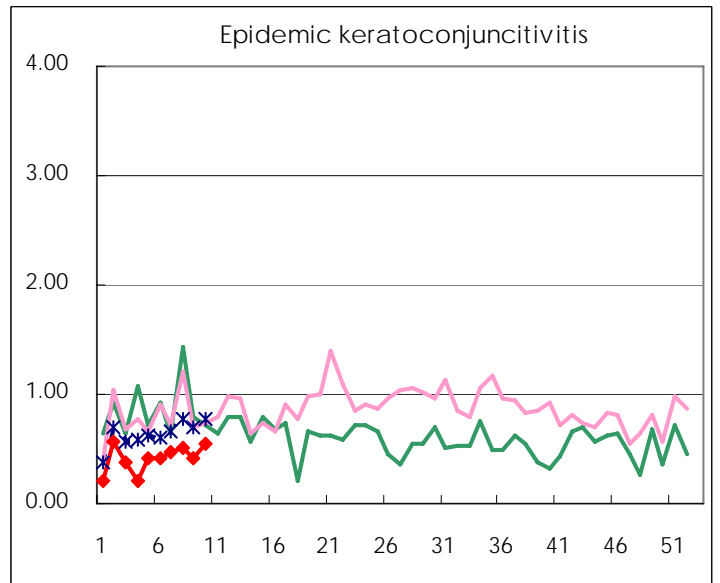
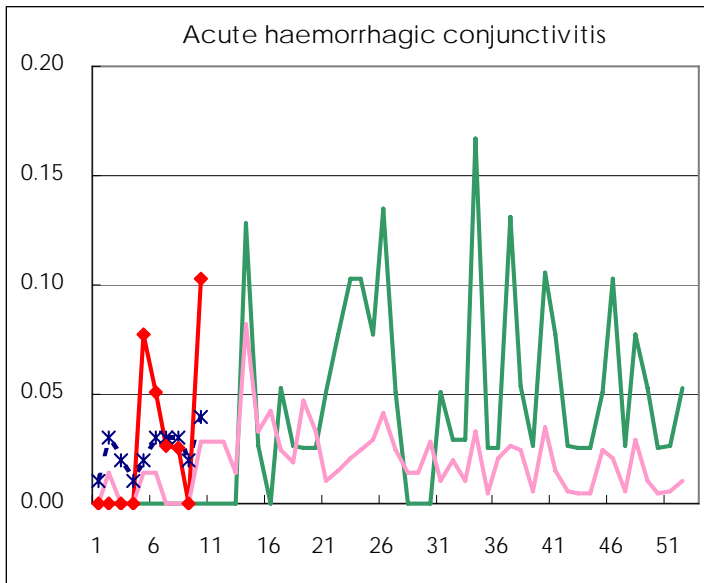
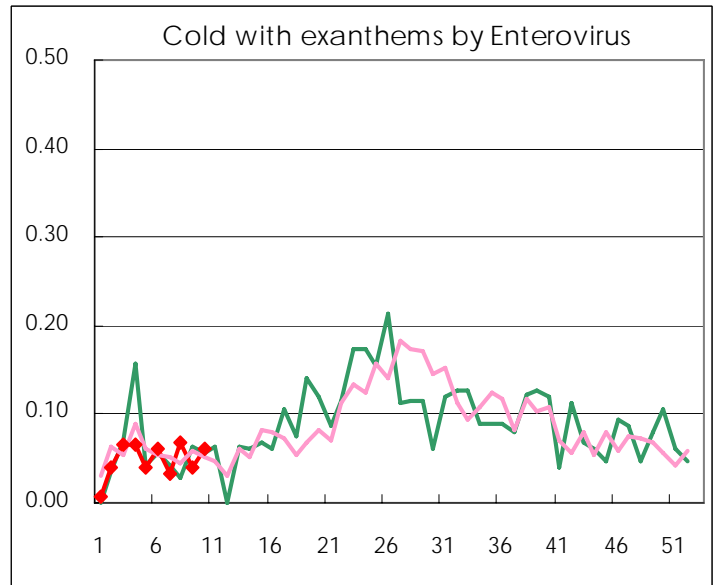
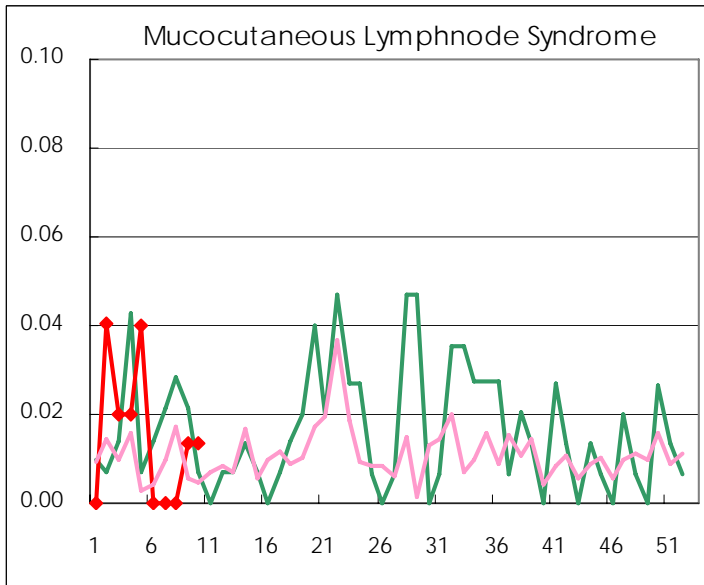
Diseases	2008				
	7th	8th	9th	10th	/sentinel
Respiratory syncytial virus infection	23	15	14	11	0.07
Pharyngoconjunctival fever	39	19	37	33	0.22
Group A streptococcal pharyngitis	361	307	371	430	2.87
Infectious gastroenteritis	1,589	1,612	1,999	2,006	13.37
Chickenpox	176	157	183	185	1.23
Hand, foot, and mouth disease	10	5	15	4	0.03
Erythema infectiosum	22	17	20	19	0.13
Exanthem subitum	105	75	77	92	0.61
Pertussis	2		2	4	0.03
Herpangina	3	2	2	2	0.01
Mumps	29	48	44	37	0.25
Cold with exanthems by Enterovirus	9	5	10	6	0.04
Mucocutaneous Lymphnode Syndrome				2	0.01
Influenza	2,371	1,568	1,516	1,027	3.55
Acute hemorrhagic conjunctivitis	2	1	1		
Epidemic keratoconjunctivitis	16	18	20	16	0.41
Bacterial meningitis					
Aseptic meningitis		1			
Mycoplasma pneumonia	6	5	5	2	0.08
Chlamydial pneumonia (excluding psittacosis)					

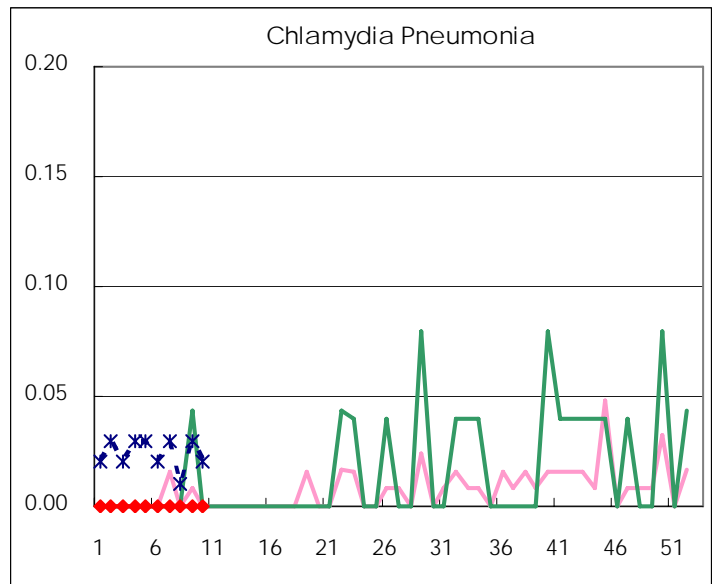
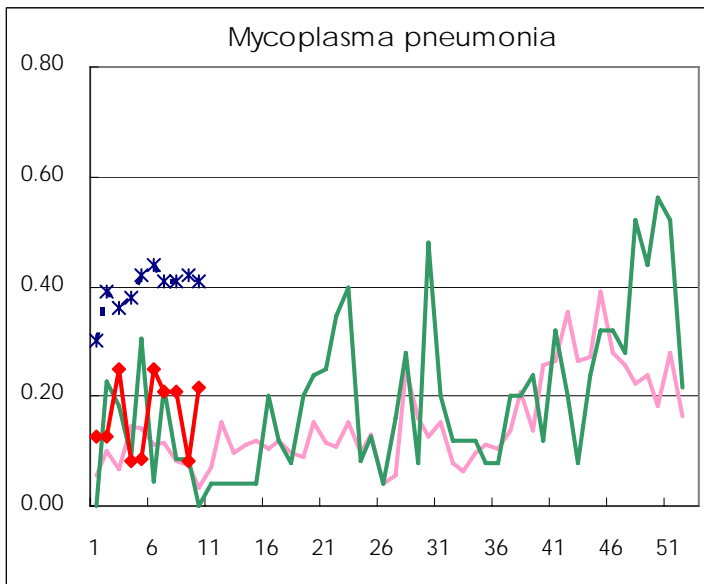
(Blank means 0.)

Disease Trend Graph (weekly reported cases per sentinel in comparison)









Types of sentinels	Number of sentinels	Sentinels having reported
Pediatric	150	150
Influenza	290	286
Ophthalmic	39	39
Specially-designated	24	23

Tokyo Metropolitan Government
Infectious Disease Surveillance Center