
INFECTIOUS DISEASES WEEKLY REPORT

TOKYO IDWR

Tokyo Metropolitan Infectious Disease Surveillance Center

21 March 2008 / Number 11

Surveillance System in Tokyo, Japan

The infectious diseases which all physicians must report

All physicians must report to health centers the incidence of the diseases which are shown at page one. Health centers electronically report the individual cases to Tokyo Metropolitan Infectious Disease Surveillance Center.

The infectious diseases required to be reported by the sentinels

The numbers of patients who visit the sentinel clinics or hospitals during a week are reported to health centers in Tokyo. And they electronically report the numbers to Tokyo Metropolitan Infectious Disease Surveillance Center. We have about 400 sentinel clinics and hospitals in Tokyo.

1st Week is early January and 52nd Week is end of December.

Tokyo Metropolitan Institute of Public Health
Epidemiological Information Office

TEL:81-3-3363-3213 FAX:81-3-5332-7365

e-mail:idsc@tokyo-eiken.go.jp

URL:idsc.tokyo-eiken.go.jp/

Number of patients with the diseases which all physicians must report

Category	Diseases	Tokyo				Japan		
		8th	9th	10th	11th	Cum 2008	11th	Cum 2008
I	Ebola hemorrhagic fever							
	Crimean-Congo hemorrhagic fever							
	Smallpox							
	South American hemorrhagic fever							
	Plague							
	Marburg disease							
	Lassa fever							
II	Acute poliomyelitis							1
	Tuberculosis	77	78	71	50	733	291	4480
	Diphtheria							
	Severe Acute Respiratory Syndrome(SARS)							
III	Cholera						2	4
	Shigellosis	1		2	2	14	6	66
	Enterohemorrhagic Escherichia coli infection	3		2		8	71	196
	Typhoid fever					3		9
	Paratyphoid fever					1		6
IV	Hepatitis E	1				2		10
	West Nile fever							
	Hepatitis A	3	1	1		9	1	41
	Echinococcosis							4
	Yellow fever							
	Psittacosis							
	Omsk hemorrhagic fever							
	Relapsing fever							
	Kyasanur forest disease							
	Q fever							
	Rabies							
	Coccidioidomycosis							
	Monkeypox							
	Hemorrhagic fever with renal syndrome							
	Western equine encephalitis							
	Tick-borne encephalitis							
	Anthrax							
	Scrub typhus(Tsutsugamushi disease)					4		38
	Dengue fever					3		11
	Eastern equine encephalitis							
	Avian influenza virus infection							
	Nipah virus infection							
	Japanese spotted fever							1
	Japanese encephalitis							
	Epidemic typhus							
	Hantavirus pulmonary syndrome							
	Herpes B virus infection							
	Glanders							
	Brucellosis							
	Venezuelan equine encephalitis							
	Hendra virus infection							
	Botulism							
Malaria		1			4		6	
Tularemia							2	
Lyme disease							1	
Lyssavirus infection(excluding rabies)								
Rift valley fever								
Melioidosis								
Legionellosis	1		2		14	15	164	
Leptospirosis								
Rocky mountain spotted fever								

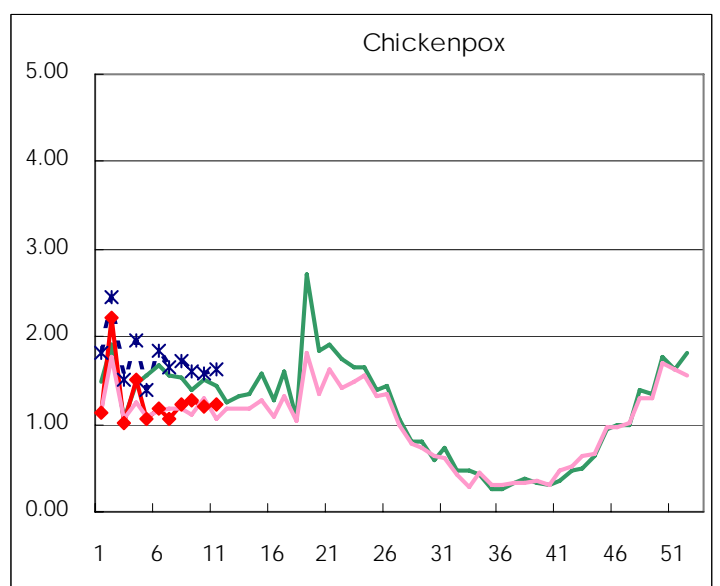
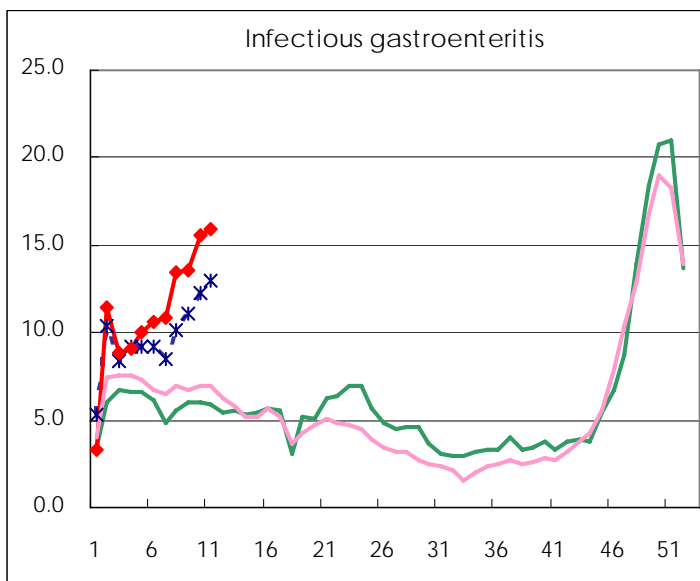
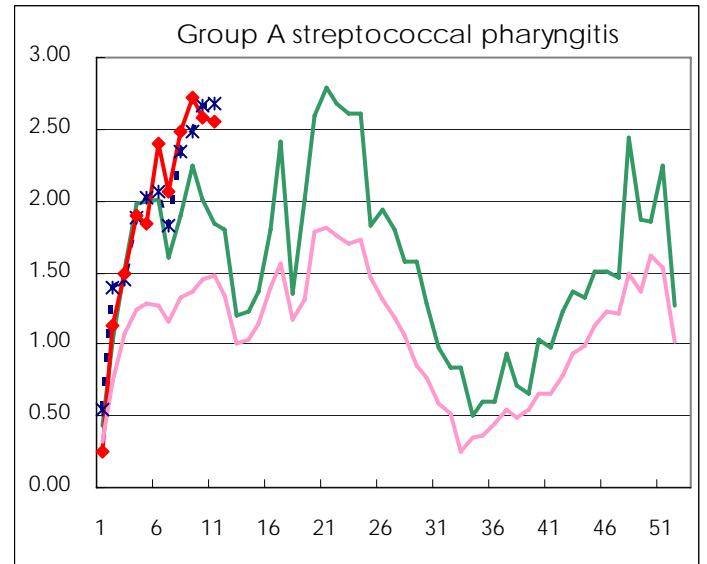
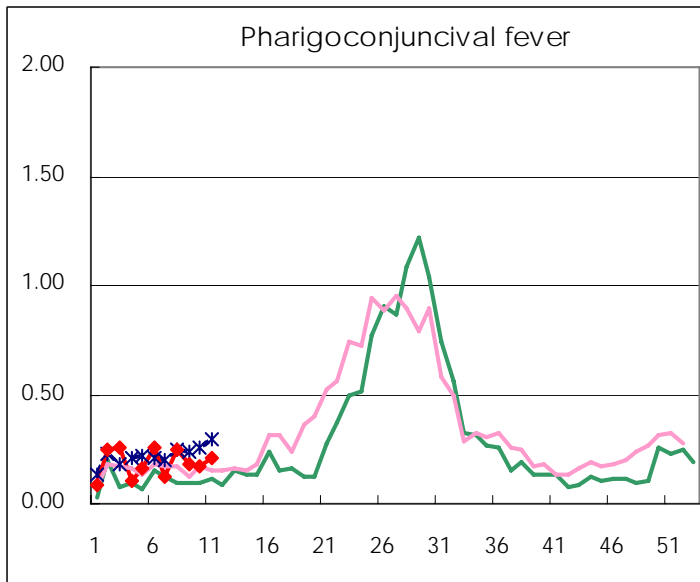
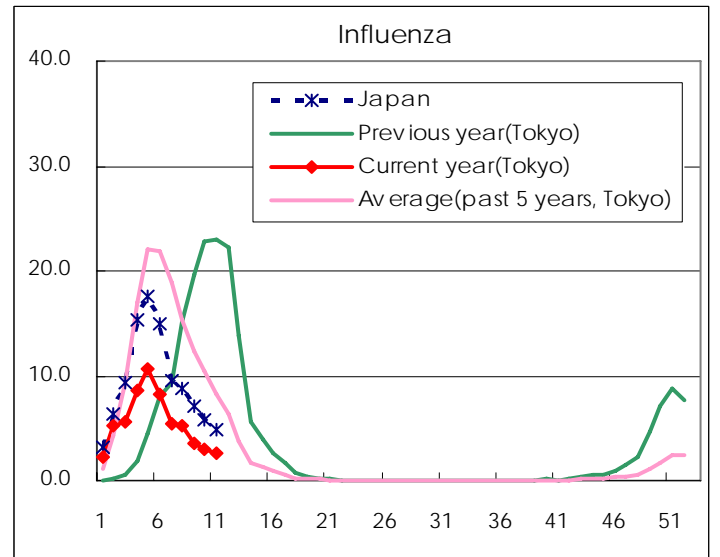
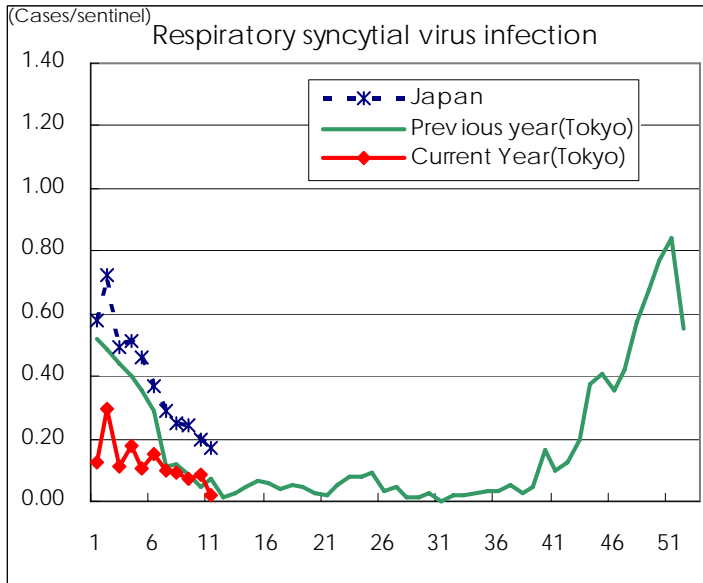
Category	Diseases	Tokyo					Japan	
		8th	9th	10th	11th	Cum 2008	11th	Cum 2008
V	Amebiasis	1	4	3		33	10	162
	Viral hepatitis(excluding hepatitis A and E)	1	1		1	7	5	42
	Acute encephalitis(excluding JE and WNE)	1				5	3	53
	Cryptosporidiosis							
	Creutzfeldt-Jakob disease			1		1	1	27
	Severe invasive streptococcal infections(TSLS)		1			6	2	24
	Acquired immunodeficiency syndrome (AIDS)	6	20	11	7	110	20	271
	Giardiasis		1		1	4	2	15
	Meningococcal meningitis							4
	Congenital rubella syndrome							
	Syphilis	4	6	3	4	31	17	147
	Tetanus					2	1	14
	Vancomycin-resistant S. aureus infection							
	Vancomycin-resistant Enterococcus infection	1				2	1	10
	Rubella		1	2		10	9	96
Measles	70	95	67	63	490	435	4212	
designated	Influenza (H5N1)							

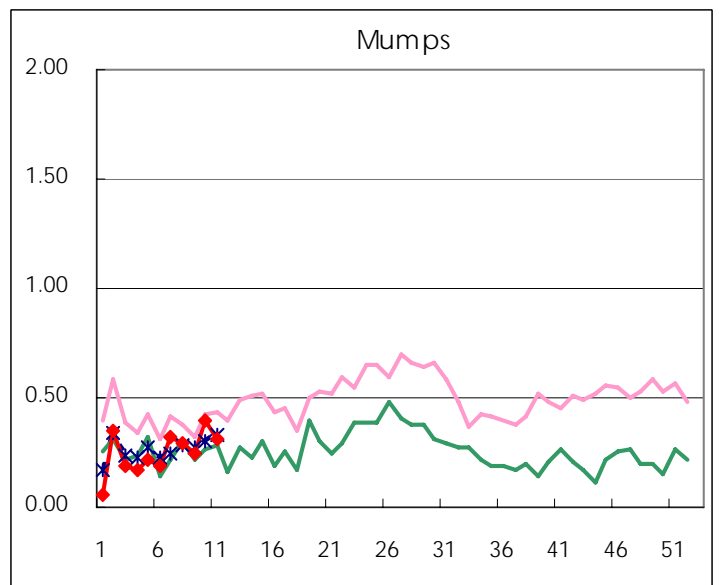
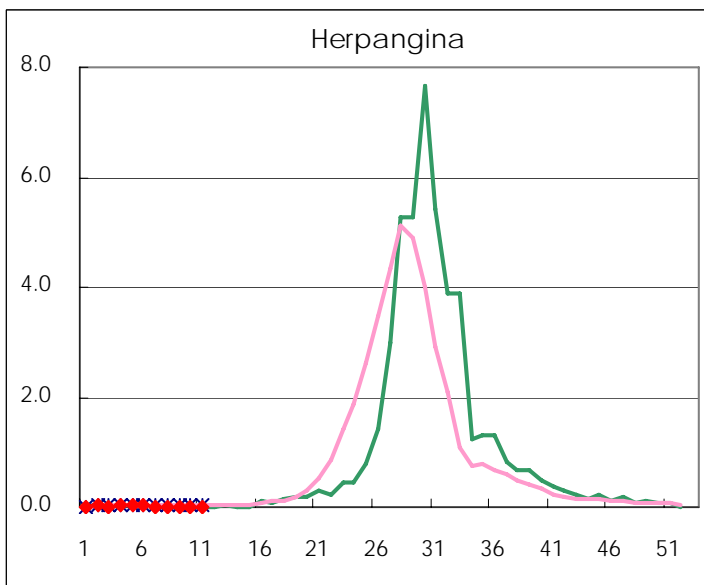
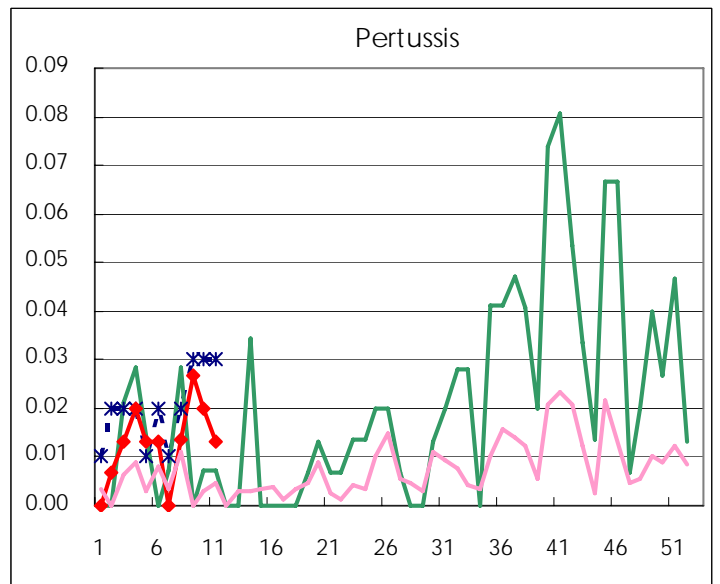
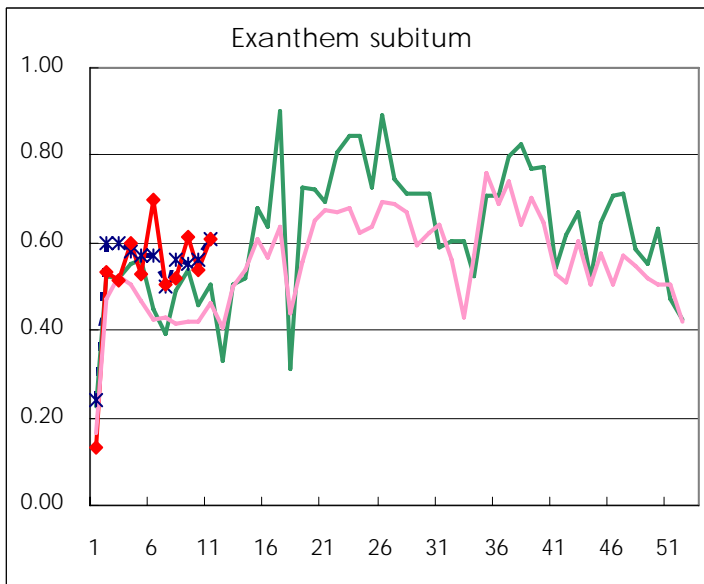
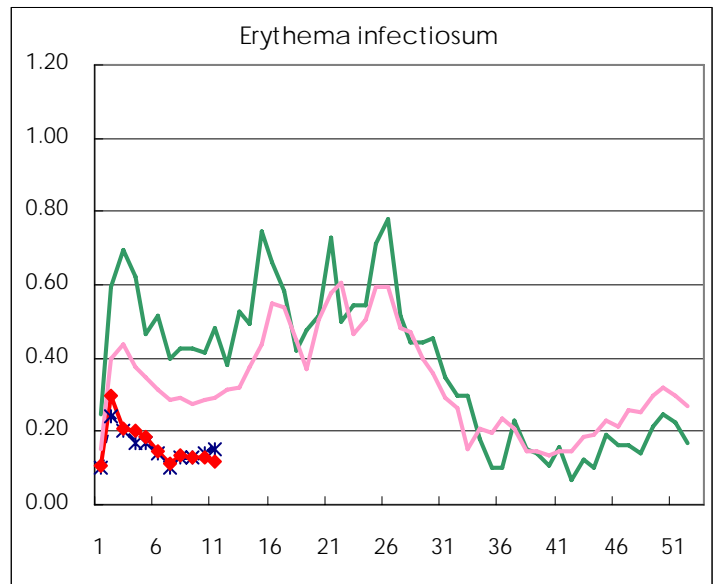
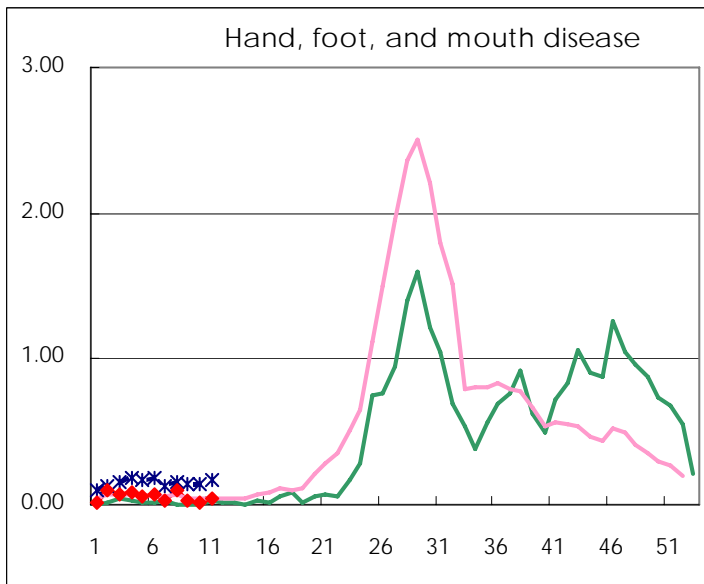
Number of patients with the diseases to be reported
by the designated clinics and hospitals

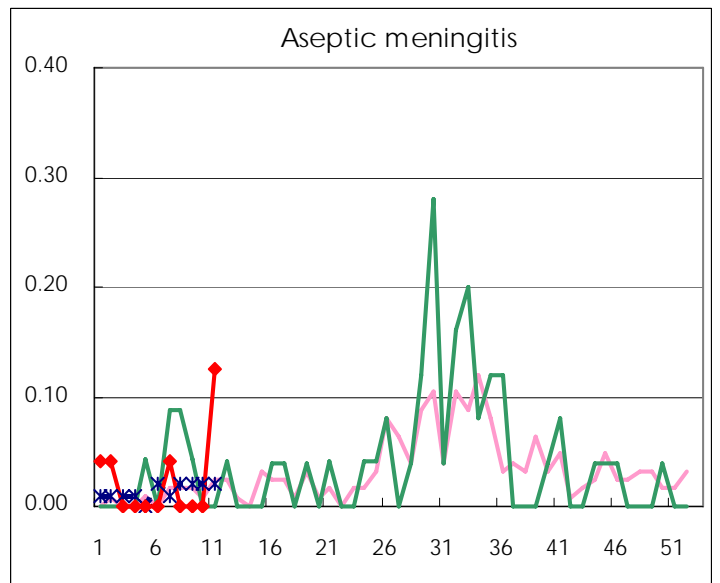
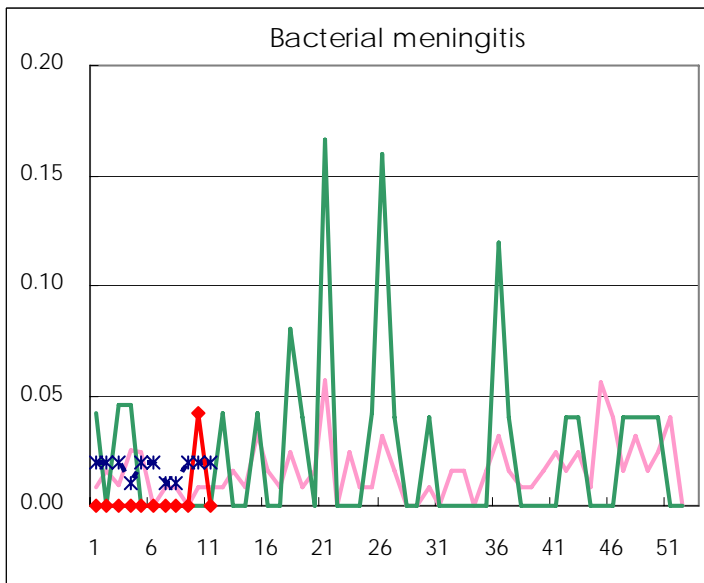
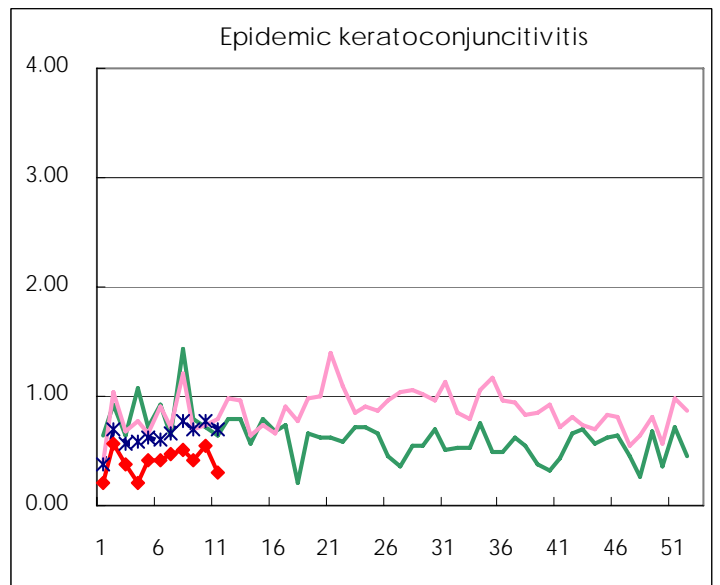
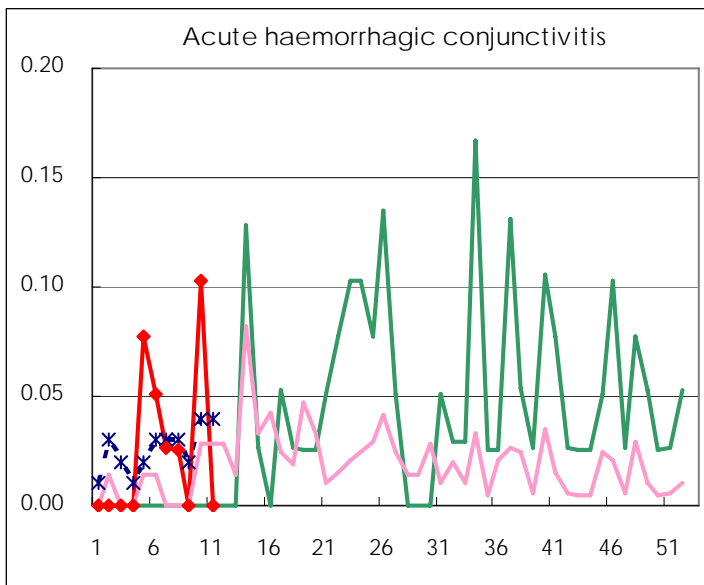
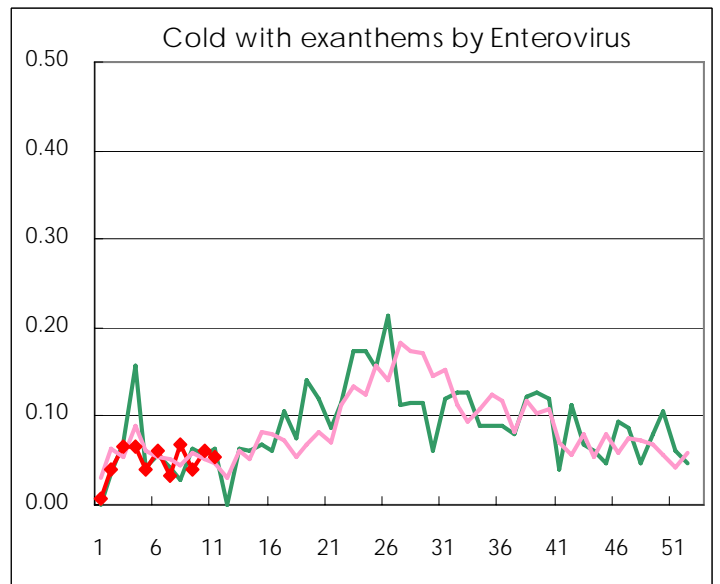
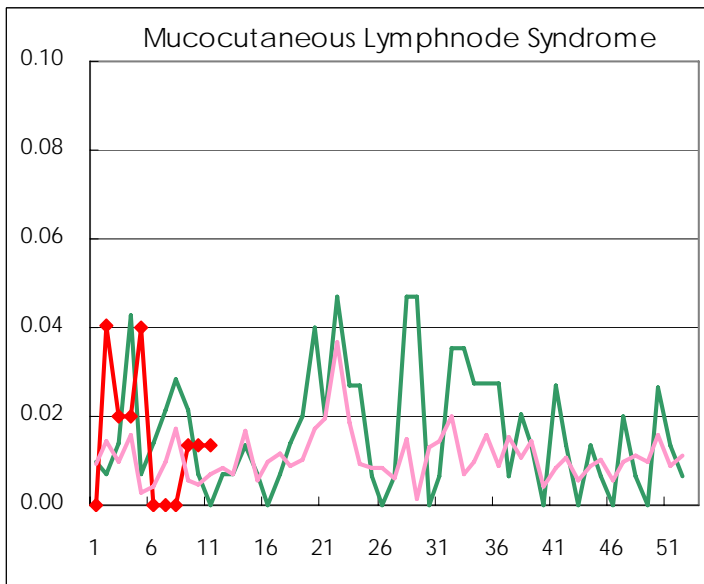
Diseases	2008				
	8th	9th	10th	11th	/sentinel
Respiratory syncytial virus infection	14	11	13	3	0.02
Pharyngoconjunctival fever	37	27	26	32	0.21
Group A streptococcal pharyngitis	371	409	387	382	2.55
Infectious gastroenteritis	1,999	2,028	2,337	2,380	15.87
Chickenpox	183	190	179	185	1.23
Hand, foot, and mouth disease	15	4	3	7	0.05
Erythema infectiosum	20	19	19	18	0.12
Exanthem subitum	77	92	81	91	0.61
Pertussis	2	4	3	2	0.01
Herpangina	2	2	1		
Mumps	44	37	59	47	0.31
Cold with exanthems by Enterovirus	10	6	9	8	0.05
Mucocutaneous Lymphnode Syndrome		2	2	2	0.01
Influenza	1,516	1,027	849	745	2.59
Acute hemorrhagic conjunctivitis	1		4		
Epidemic keratoconjunctivitis	20	16	21	12	0.31
Bacterial meningitis			1		
Aseptic meningitis				3	0.13
Mycoplasma pneumonia	5	2	5	4	0.17
Chlamydial pneumonia (excluding psittacosis)					

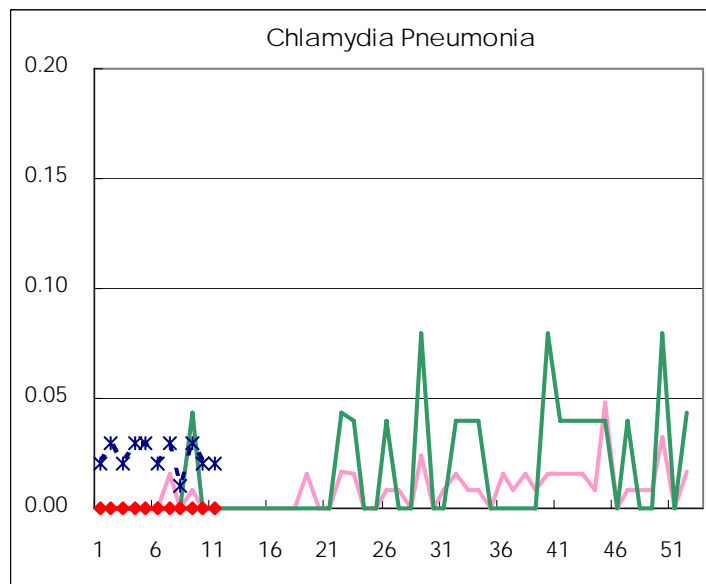
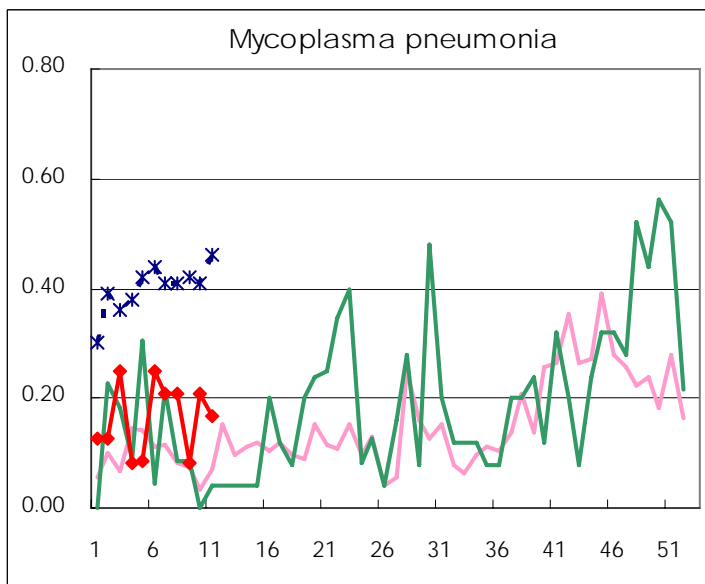
(Blank means 0.)

Disease Trend Graph (weekly reported cases per sentinel in comparison)









Types of sentinels	Number of sentinels	Sentinels having reported
Pediatric	150	150
Influenza	290	288
Ophthalmic	39	39
Specially-designated	24	24

Tokyo Metropolitan Government
Infectious Disease Surveillance Center