

---

INFECTIOUS DISEASES WEEKLY REPORT

# TOKYO IDWR

Tokyo Metropolitan Infectious Disease Surveillance Center

## 24 April 2008 / Number 16

### Surveillance System in Tokyo, Japan

The infectious diseases which all physicians must report

All physicians must report to health centers the incidence of the diseases which are shown at page one. Health centers electronically report the individual cases to Tokyo Metropolitan Infectious Disease Surveillance Center.

The infectious diseases required to be reported by the sentinels

The numbers of patients who visit the sentinel clinics or hospitals during a week are reported to health centers in Tokyo. And they electronically report the numbers to Tokyo Metropolitan Infectious Disease Surveillance Center. We have about 400 sentinel clinics and hospitals in Tokyo.

1st Week is early January and 52nd Week is end of December.

Tokyo Metropolitan Institute of Public Health  
Epidemiological Information Office

TEL:81-3-3363-3213 FAX:81-3-5332-7365

e-mail:[idsc@tokyo-eiken.go.jp](mailto:idsc@tokyo-eiken.go.jp)

URL:[idsc.tokyo-eiken.go.jp/](http://idsc.tokyo-eiken.go.jp/)

---

## Number of patients with the diseases which all physicians must report

Category	Diseases	Tokyo				Japan		
		13th	14th	15th	16th	Cum 2008	16th	Cum 2008
I	Ebola hemorrhagic fever							
	Crimean-Congo hemorrhagic fever							
	Smallpox							
	South American hemorrhagic fever							
	Plague							
	Marburg disease							
	Lassa fever							
II	Acute poliomyelitis							1
	Tuberculosis	80	60	61	48	1,085	247	6,763
	Diphtheria							
	Severe Acute Respiratory Syndrome(SARS)							
III	Cholera			1	1	2	4	16
	Shigellosis	1			1	18	2	83
	Enterohemorrhagic Escherichia coli infection	1		2	1	15	13	293
	Typhoid fever				1	4	1	14
	Paratyphoid fever			1		2		7
IV	Hepatitis E			1		3		15
	West Nile fever							
	Hepatitis A				1	10	1	55
	Echinococcosis							5
	Yellow fever							
	Psittacosis							
	Omsk hemorrhagic fever							
	Relapsing fever							
	Kyasanur forest disease							
	Q fever							1
	Rabies							
	Coccidioidomycosis							
	Monkeypox							
	Hemorrhagic fever with renal syndrome							
	Western equine encephalitis							
	Tick-borne encephalitis							
	Anthrax							
	Scrub typhus(Tsutsugamushi disease)					4	2	43
	Dengue fever	2	1			6	2	18
	Eastern equine encephalitis							
	Avian influenza virus infection							
	Nipah virus infection							
	Japanese spotted fever							2
	Japanese encephalitis							
	Epidemic typhus							
	Hantavirus pulmonary syndrome							
	Herpes B virus infection							
	Glanders							
	Brucellosis							
	Venezuelan equine encephalitis							
	Hendra virus infection							
	Botulism							
Malaria	1		1		6		11	
Tularemia							2	
Lyme disease							1	
Lyssavirus infection(excluding rabies)								
Rift valley fever								
Melioidosis								
Legionellosis	1	1	2	2	21	7	221	
Leptospirosis								
Rocky mountain spotted fever								

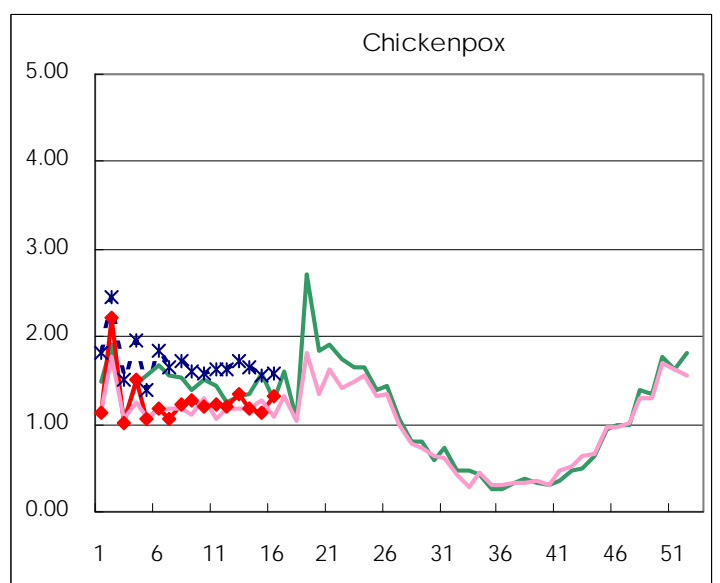
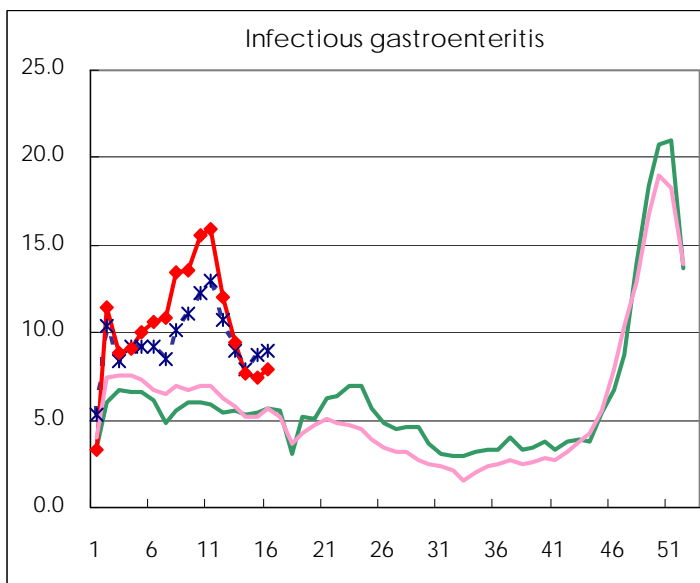
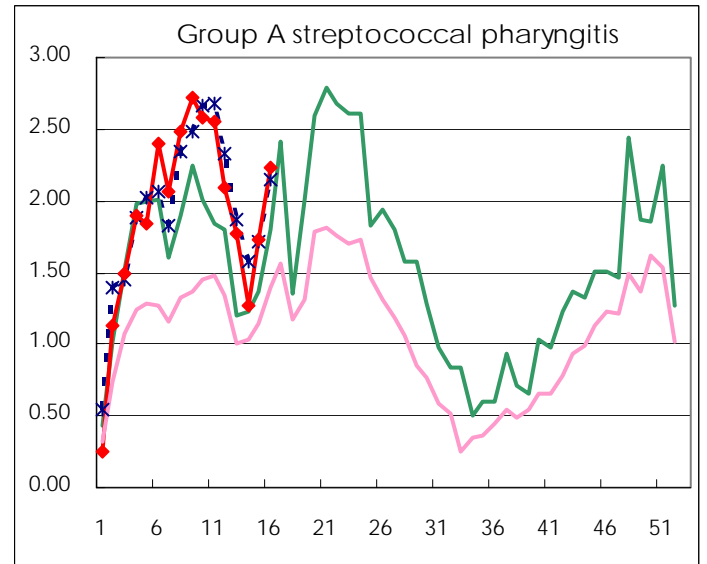
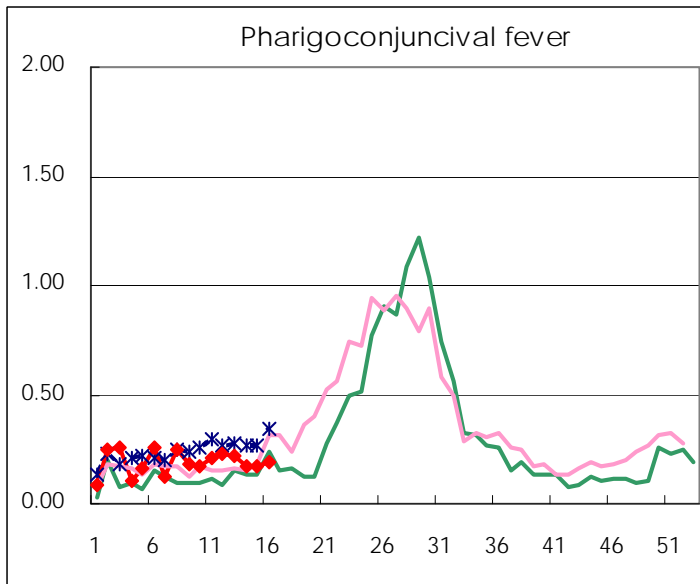
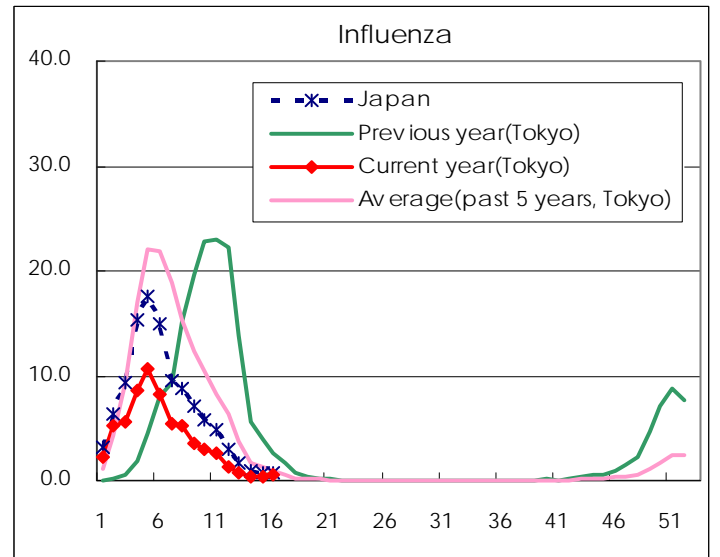
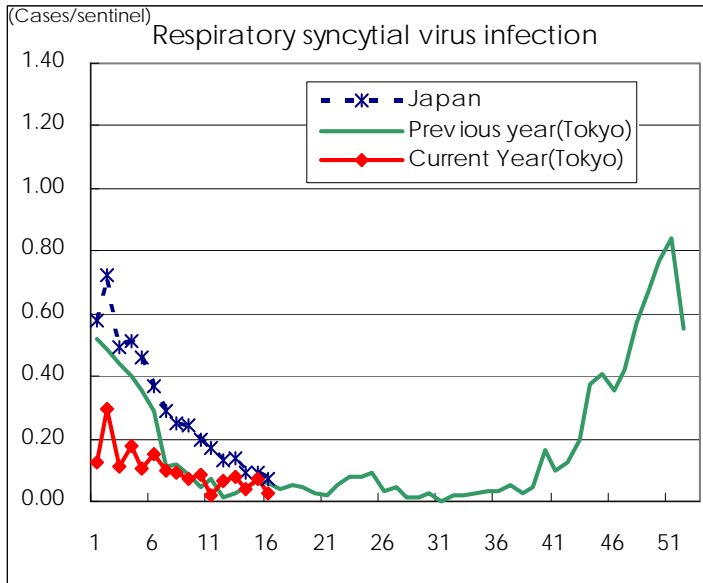
Category	Diseases	Tokyo					Japan	
		13th	14th	15th	16th	Cum 2008	16th	Cum 2008
V	Amebiasis	4	5	4	5	53	14	246
	Viral hepatitis(excluding hepatitis A and E)		1		1	9	2	61
	Acute encephalitis(excluding JE and WNE)					5		72
	Cryptosporidiosis			1	1	2	1	2
	Creutzfeldt-Jakob disease	1		1	1	4	1	42
	Severe invasive streptococcal infections(TSLS)	4				10	1	38
	Acquired immunodeficiency syndrome (AIDS)	9	11	11	13	170	16	406
	Giardiasis	1	1	1	2	9	3	27
	Meningococcal meningitis							5
	Congenital rubella syndrome							
	Syphilis	4	3	4	4	53	8	209
	Tetanus					2	2	17
	Vancomycin-resistant S. aureus infection				1	1		
	Vancomycin-resistant Enterococcus infection	1				3	2	25
	Rubella	2		2	2	17	9	135
Measles	52	44	42	31	723	259	6,185	
designated	Influenza (H5N1)							

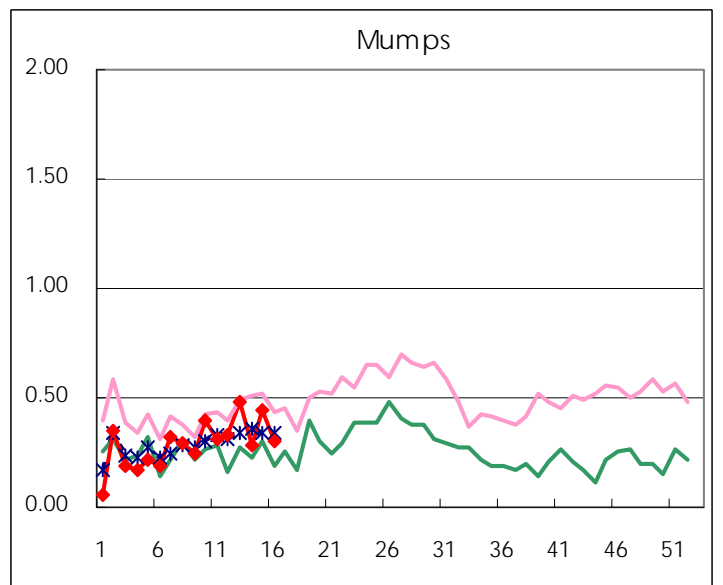
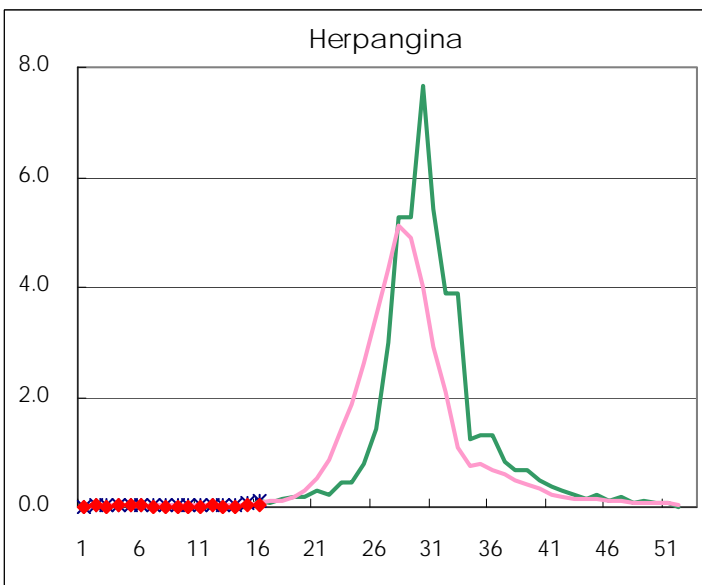
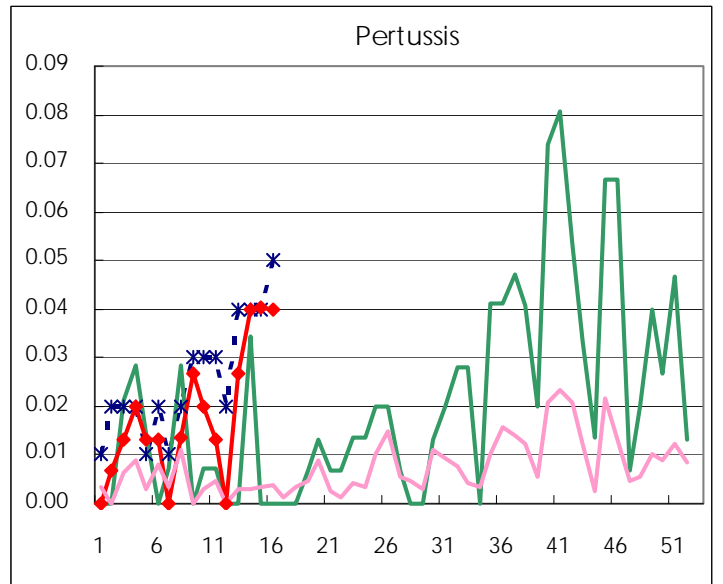
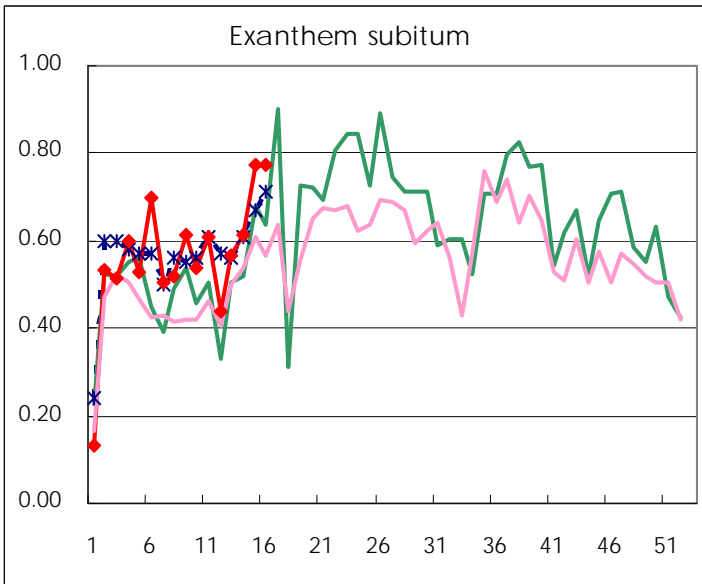
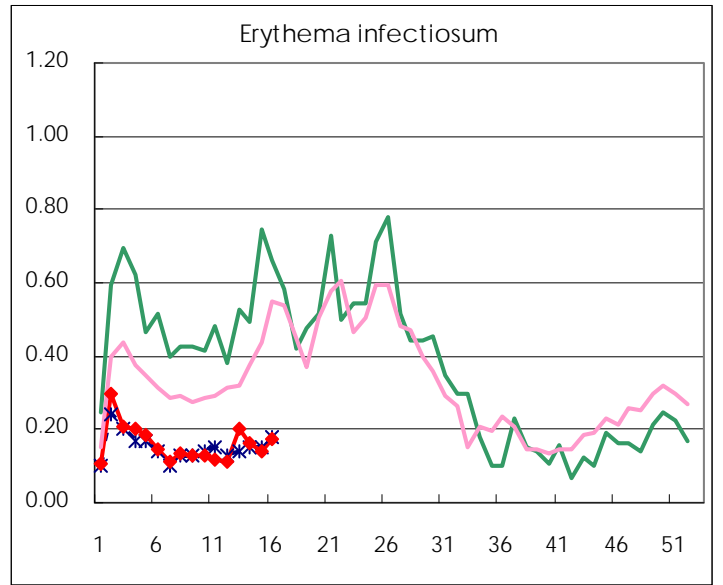
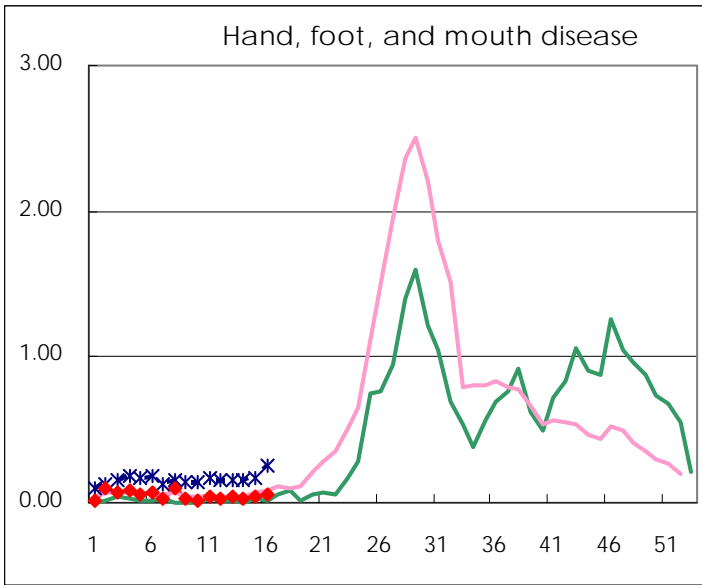
Number of patients with the diseases to be reported  
by the designated clinics and hospitals

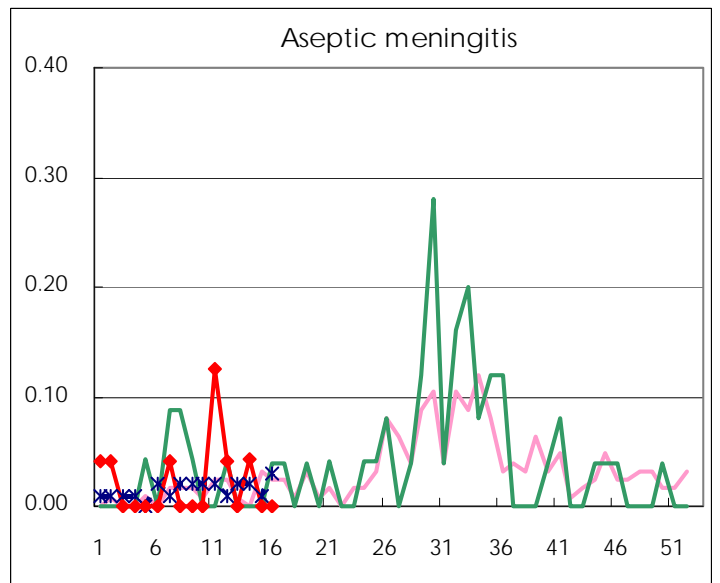
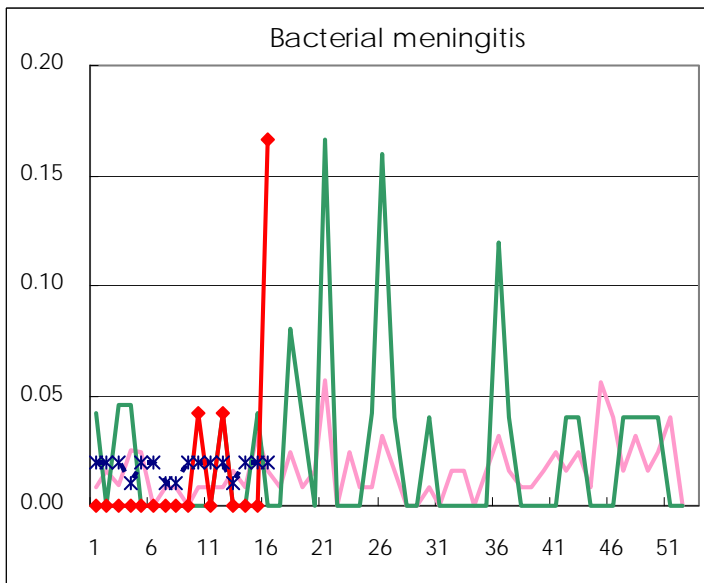
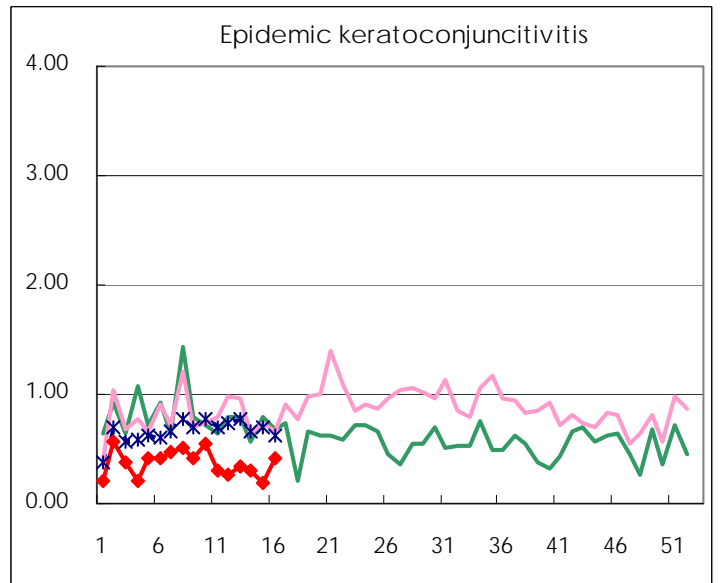
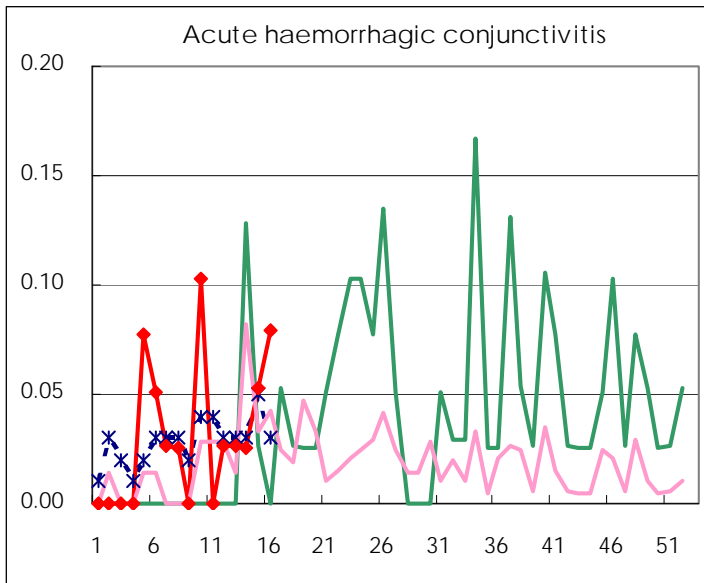
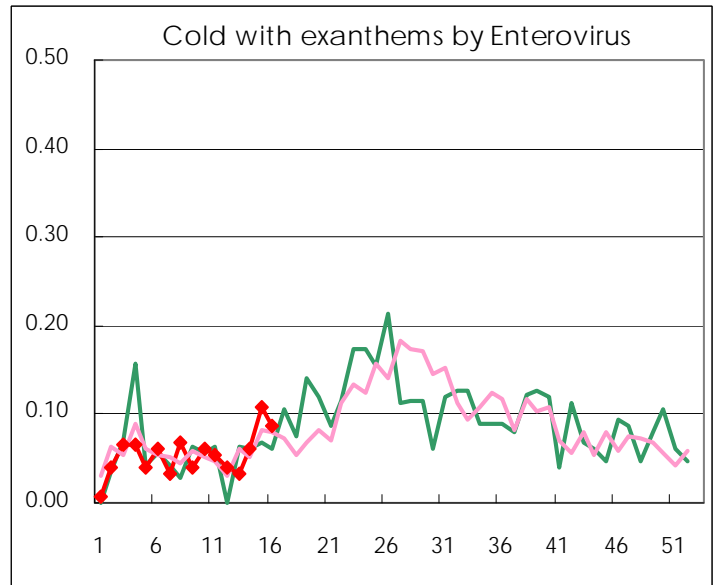
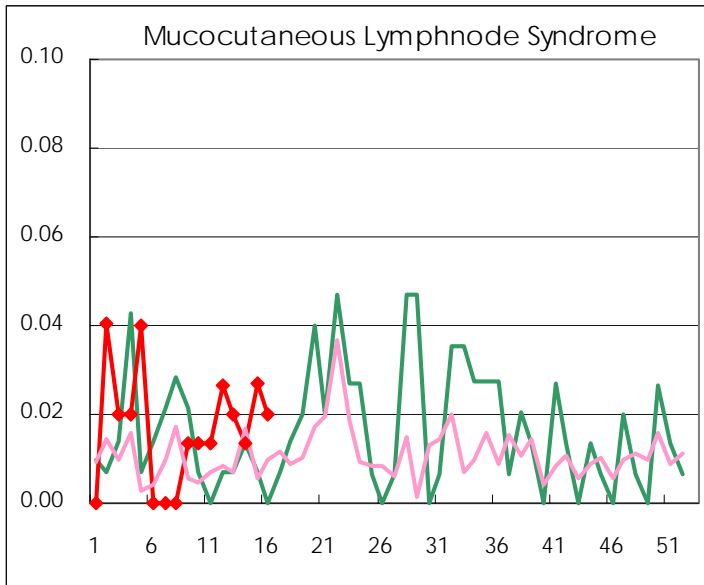
Diseases	2008				
	13th	14th	15th	16th	/sentinel
Respiratory syncytial virus infection	12	6	11	4	0.03
Pharyngoconjunctival fever	32	26	26	28	0.19
Group A streptococcal pharyngitis	264	191	258	335	2.23
Infectious gastroenteritis	1,411	1,152	1,101	1,189	7.93
Chickenpox	201	178	170	198	1.32
Hand, foot, and mouth disease	7	4	7	8	0.05
Erythema infectiosum	30	24	21	26	0.17
Exanthem subitum	84	92	115	116	0.77
Pertussis	4	6	6	6	0.04
Herpangina	2	1	5	3	0.02
Mumps	72	42	66	45	0.30
Cold with exanthems by Enterovirus	5	9	16	13	0.09
Mucocutaneous Lymphnode Syndrome	3	2	4	3	0.02
Influenza	233	121	112	141	0.49
Acute hemorrhagic conjunctivitis	1	1	2	3	0.08
Epidemic keratoconjunctivitis	13	12	7	16	0.42
Bacterial meningitis				4	0.17
Aseptic meningitis		1			
Mycoplasma pneumonia	7	3	5	5	0.21
Chlamydial pneumonia (excluding psittacosis)					

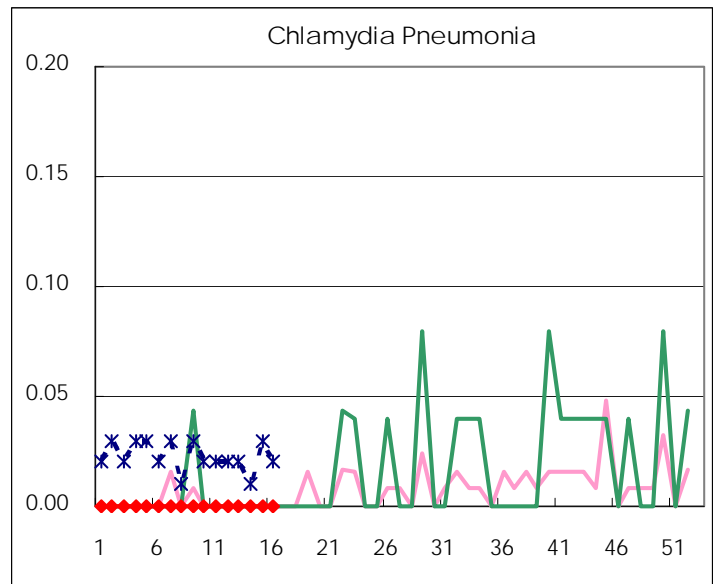
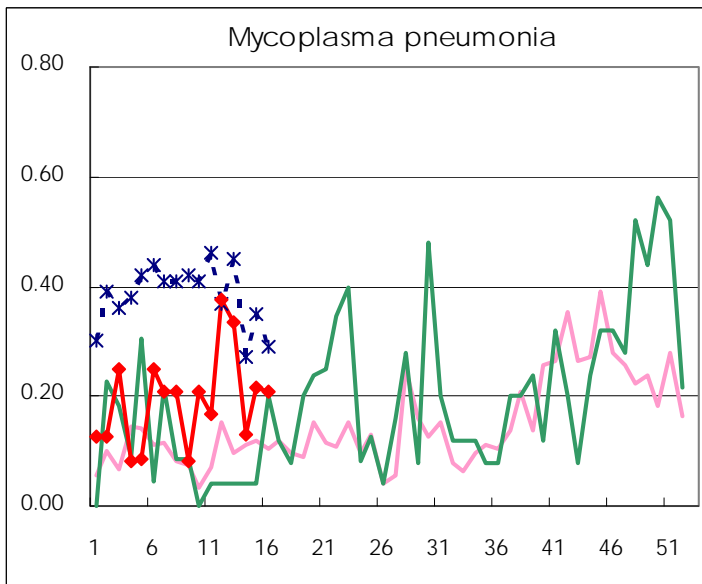
( Blank means 0. )

# Disease Trend Graph (weekly reported cases per sentinel in comparison)









Number of sentinel facilities for weekly reporting		
Types of sentinels	Number of sentinels	Sentinels having reported
Pediatric	150	150
Influenza	290	288
Ophthalmic	39	38
Specially-designated	24	24

**Tokyo Metropolitan Government**  
**Infectious Disease Surveillance Center**