

---

INFECTIOUS DISEASES WEEKLY REPORT

# TOKYO IDWR

Tokyo Metropolitan Infectious Disease Surveillance Center

## 12 May 2008 / Number 18

### Surveillance System in Tokyo, Japan

The infectious diseases which all physicians must report

All physicians must report to health centers the incidence of the diseases which are shown at page one. Health centers electronically report the individual cases to Tokyo Metropolitan Infectious Disease Surveillance Center.

The infectious diseases required to be reported by the sentinels

The numbers of patients who visit the sentinel clinics or hospitals during a week are reported to health centers in Tokyo. And they electronically report the numbers to Tokyo Metropolitan Infectious Disease Surveillance Center. We have about 400 sentinel clinics and hospitals in Tokyo.

1st Week is early January and 52nd Week is end of December.

Tokyo Metropolitan Institute of Public Health  
Epidemiological Information Office

TEL:81-3-3363-3213 FAX:81-3-5332-7365

e-mail:[idsc@tokyo-eiken.go.jp](mailto:idsc@tokyo-eiken.go.jp)

URL:[idsc.tokyo-eiken.go.jp/](http://idsc.tokyo-eiken.go.jp/)

---

## Number of patients with the diseases which all physicians must report

Category	Diseases	Tokyo					Japan	
		15th	16th	17th	18th	Cum 2008	18th	Cum 2008
I	Ebola hemorrhagic fever							
	Crimean-Congo hemorrhagic fever							
	Smallpox							
	South American hemorrhagic fever							
	Plague							
	Marburg disease							
	Lassa fever							
II	Acute poliomyelitis							1
	Tuberculosis	87	76	76	59	1,285	249	7,835
	Diphtheria							
	Severe Acute Respiratory Syndrome(SARS)							
III	Cholera	1	1			2	1	17
	Shigellosis		1			18	5	93
	Enterohemorrhagic Escherichia coli infection	2	1	2	4	21	25	338
	Typhoid fever		1			4		17
	Paratyphoid fever	1			1	3	2	14
IV	Hepatitis E	1			1	4	1	18
	West Nile fever							
	Hepatitis A		1		1	11	2	60
	Echinococcosis							5
	Yellow fever							
	Psittacosis							
	Omsk hemorrhagic fever							
	Relapsing fever							
	Kyasanur forest disease							
	Q fever				1	1		2
	Rabies							
	Coccidioidomycosis							
	Monkeypox							
	Hemorrhagic fever with renal syndrome							
	Western equine encephalitis							
	Tick-borne encephalitis							
	Anthrax							
	Scrub typhus(Tsutsugamushi disease)					4	2	55
	Dengue fever					6		18
	Eastern equine encephalitis							
	Avian influenza virus infection							
	Nipah virus infection							
	Japanese spotted fever							3
	Japanese encephalitis							
	Epidemic typhus							
	Hantavirus pulmonary syndrome							
	Herpes B virus infection							
	Glanders							
	Brucellosis							
	Venezuelan equine encephalitis							
	Hendra virus infection							
	Botulism							
	Malaria	1				6		11
Tularemia							2	
Lyme disease							1	
Lyssavirus infection(excluding rabies)								
Rift valley fever								
Melioidosis								
Legionellosis	2	2	2		23	12	249	
Leptospirosis								
Rocky mountain spotted fever								

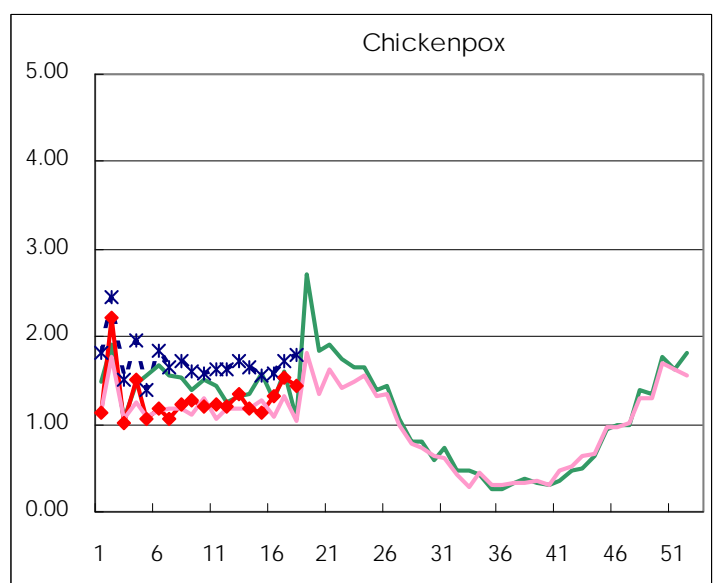
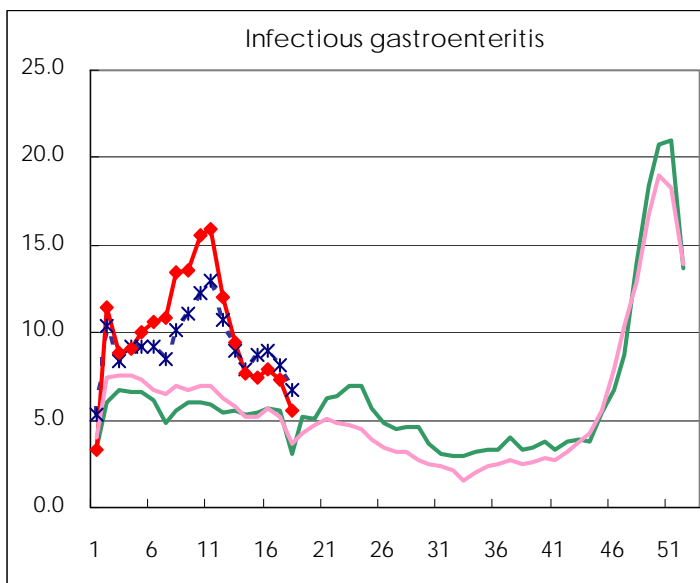
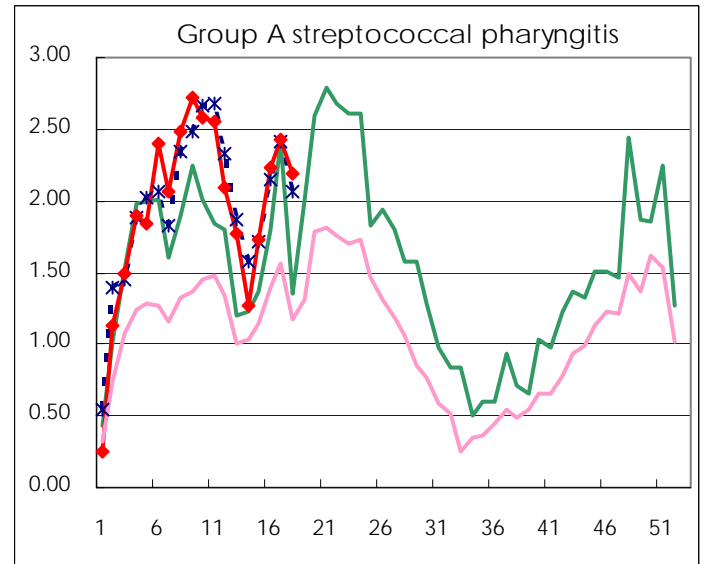
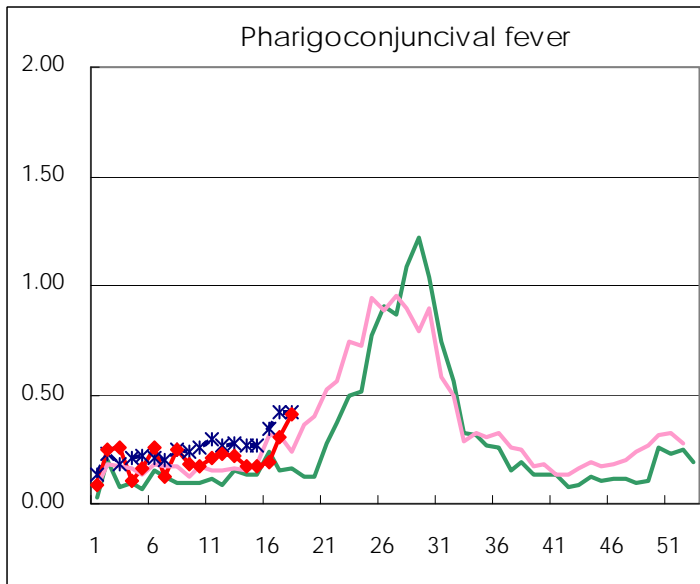
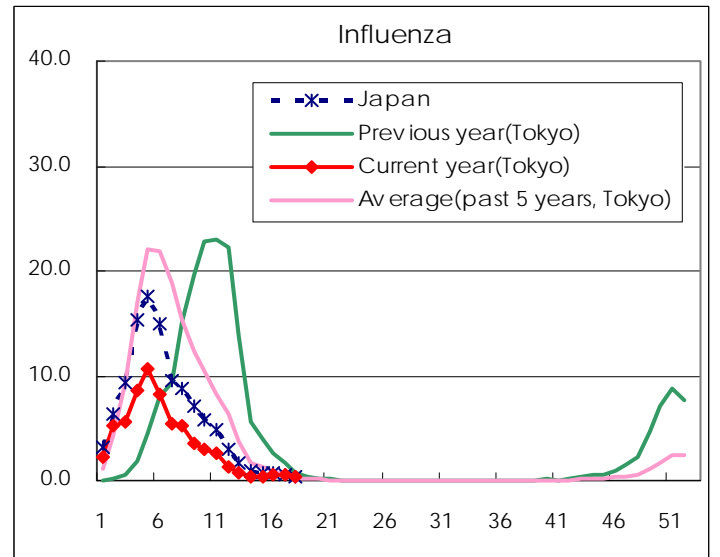
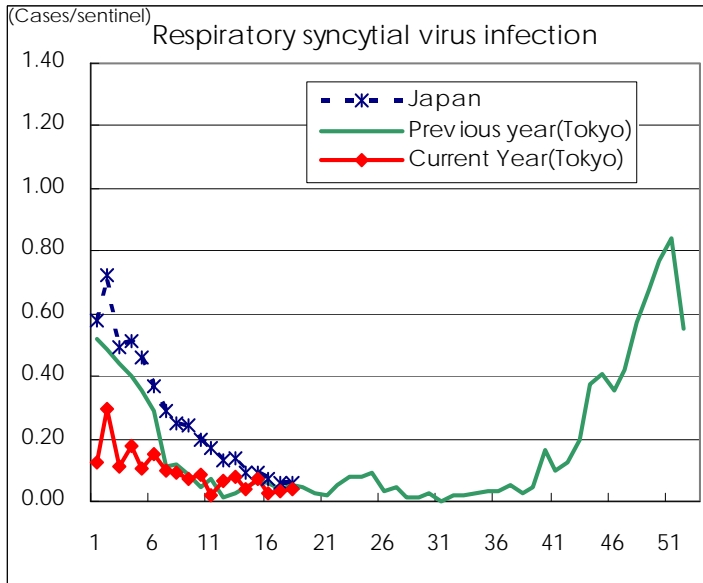
Category	Diseases	Tokyo					Japan	
		15th	16th	17th	18th	Cum 2008	18th	Cum 2008
V	Amebiasis	4	5	1	5	59	5	277
	Viral hepatitis(excluding hepatitis A and E)		1		2	11	2	70
	Acute encephalitis(excluding JE and WNE)					5	1	75
	Cryptosporidiosis	1	1			2		2
	Creutzfeldt-Jakob disease	1	1		1	5	3	47
	Severe invasive streptococcal infections(TSLS)				2	12	2	46
	Acquired immunodeficiency syndrome (AIDS)	11	13	17	14	201	13	471
	Giardiasis	1	2			9	2	27
	Meningococcal meningitis							5
	Congenital rubella syndrome							
	Syphilis	4	4	3	3	59	10	234
	Tetanus					2	2	22
	Vancomycin-resistant S. aureus infection							
	Vancomycin-resistant Enterococcus infection		1			4		24
	Rubella	2	2	3	2	22	4	155
Measles	43	32	42	45	812	287	7,179	
designated	Influenza (H5N1)							

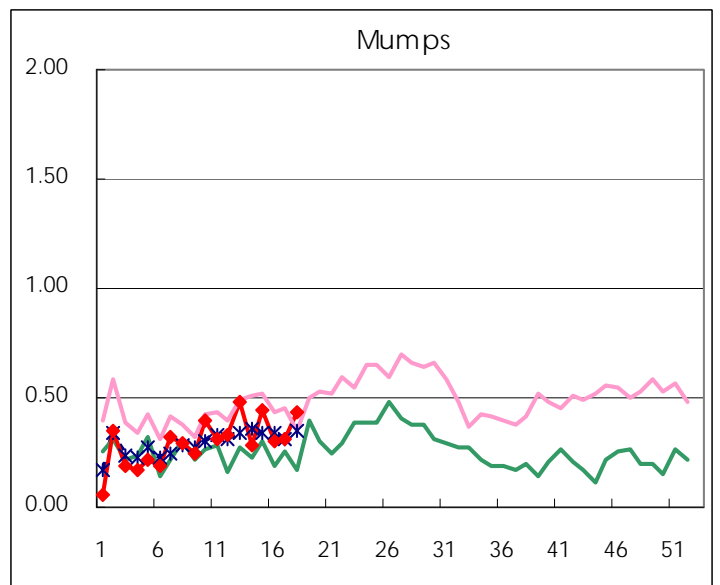
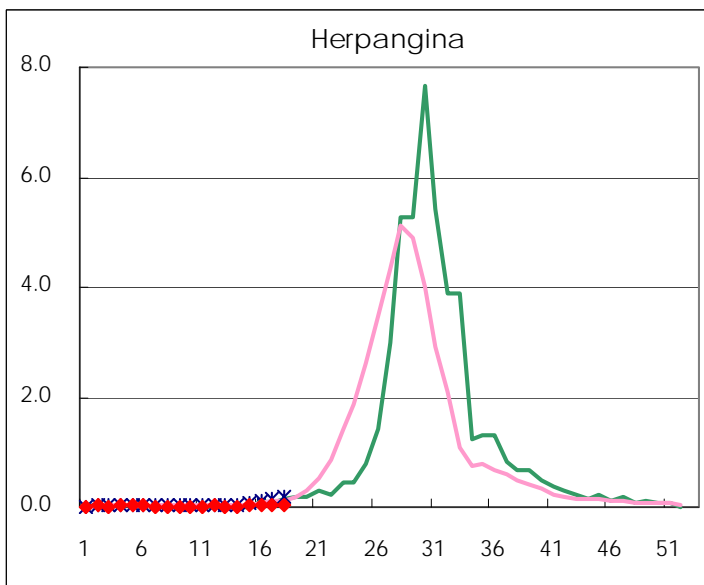
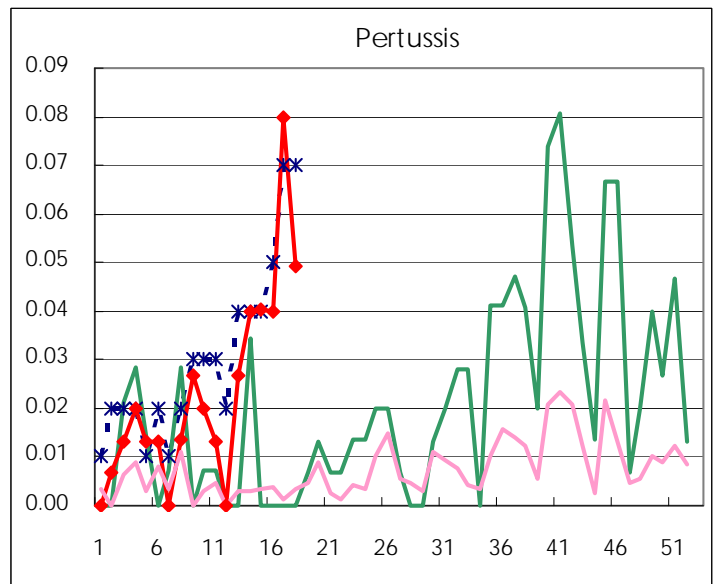
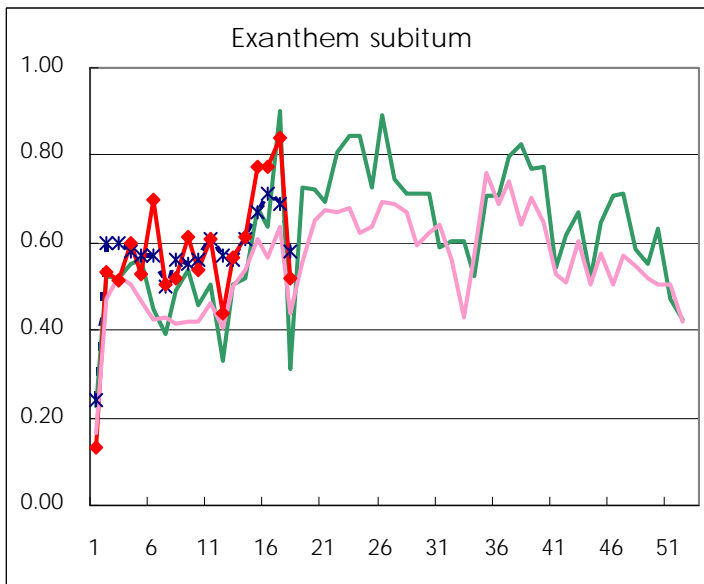
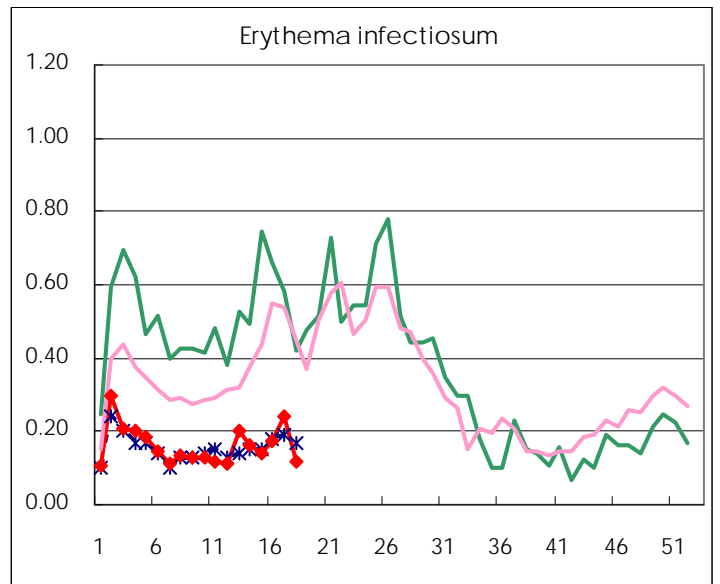
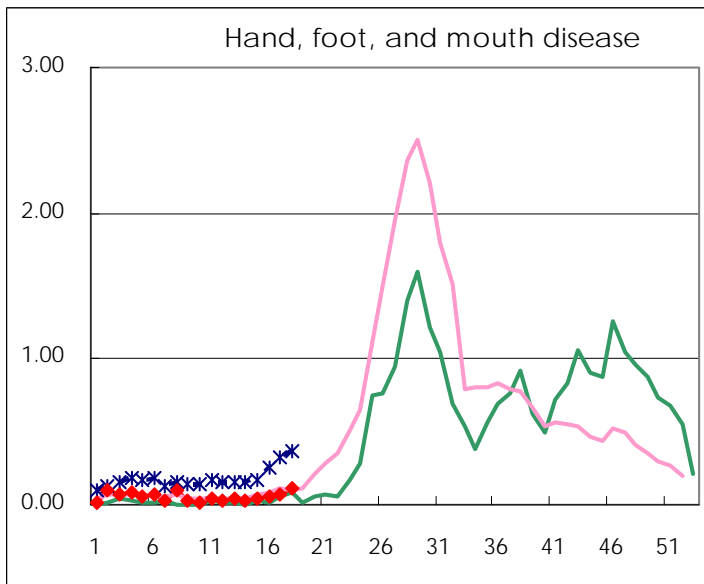
Number of patients with the diseases to be reported  
by the designated clinics and hospitals

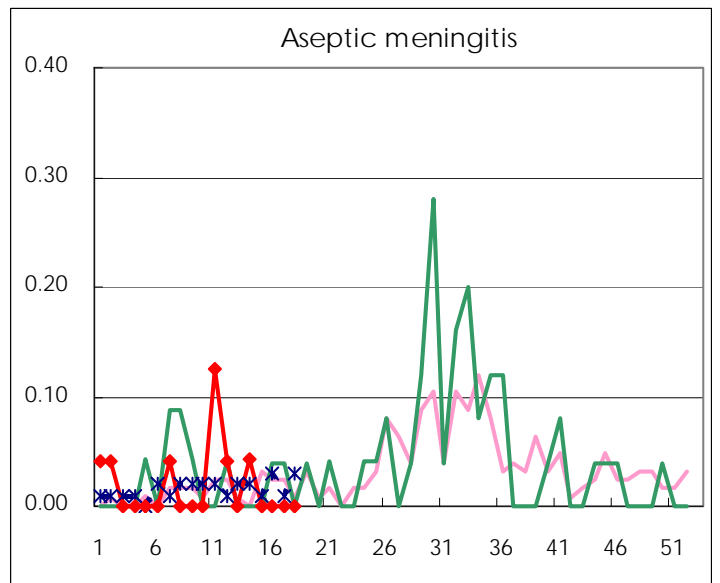
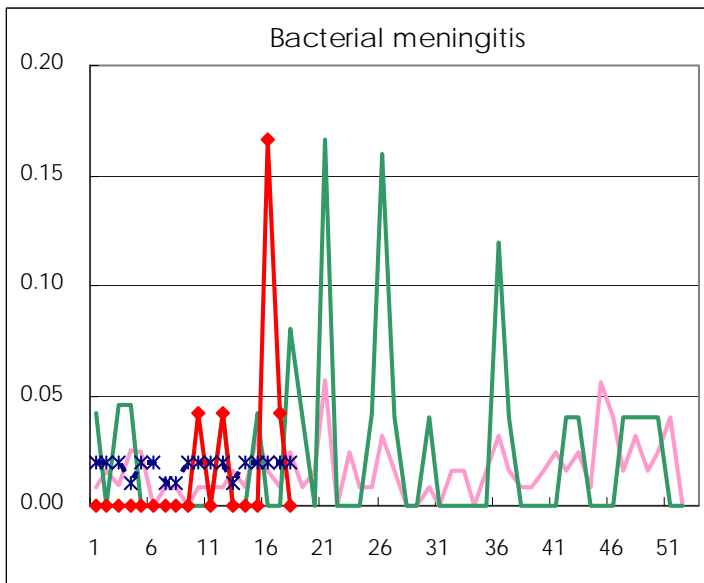
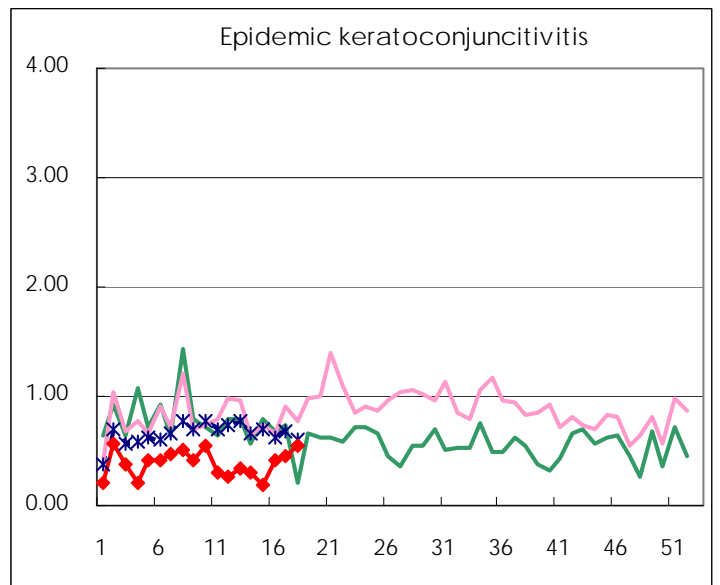
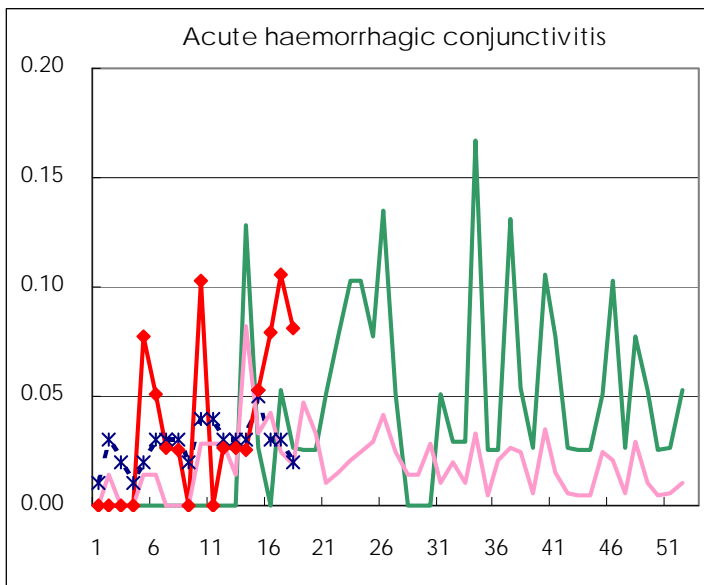
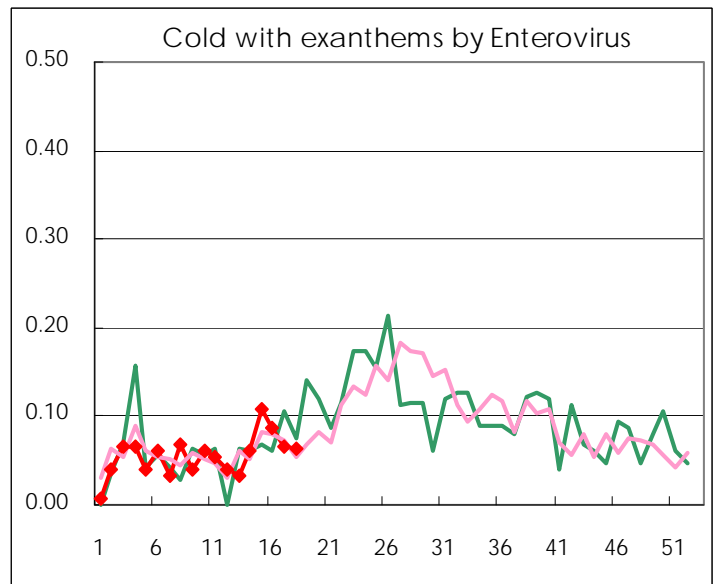
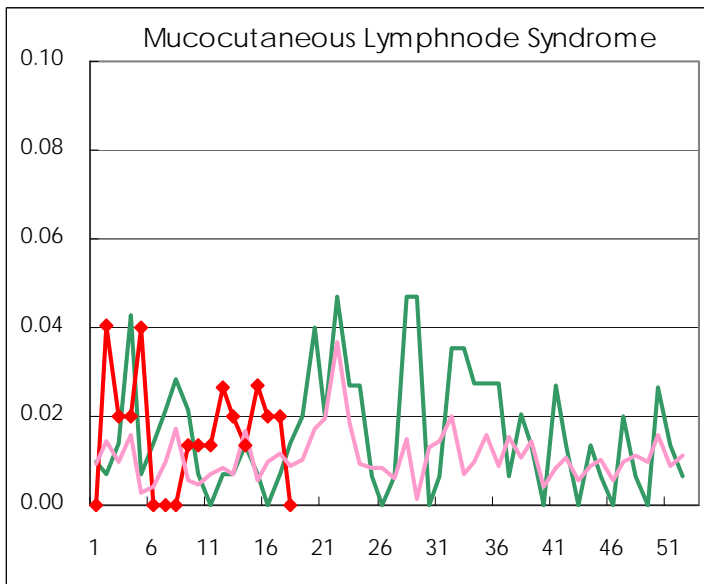
Diseases	2008				
	15th	16th	17th	18th	/sentinel
Respiratory syncytial virus infection	11	4	5	6	0.04
Pharyngoconjunctival fever	26	28	46	58	0.41
Group A streptococcal pharyngitis	258	335	365	312	2.20
Infectious gastroenteritis	1,101	1,189	1,101	787	5.54
Chickenpox	170	198	231	203	1.43
Hand, foot, and mouth disease	7	8	11	16	0.11
Erythema infectiosum	21	26	36	17	0.12
Exanthem subitum	115	116	126	74	0.52
Pertussis	6	6	12	7	0.05
Herpangina	5	3	8	7	0.05
Mumps	66	45	46	62	0.44
Cold with exanthems by Enterovirus	16	13	10	9	0.06
Mucocutaneous Lymphnode Syndrome	4	3	3		
Influenza	112	141	135	93	0.34
Acute hemorrhagic conjunctivitis	2	3	4	3	0.08
Epidemic keratoconjunctivitis	7	16	17	20	0.54
Bacterial meningitis		4	1		
Aseptic meningitis					
Mycoplasma pneumonia	5	5	8	6	0.26
Chlamydial pneumonia (excluding psittacosis)			1	2	0.09

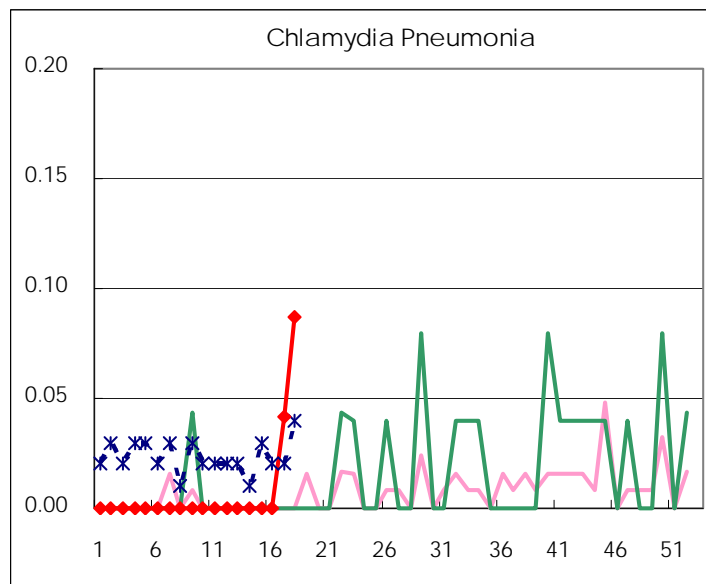
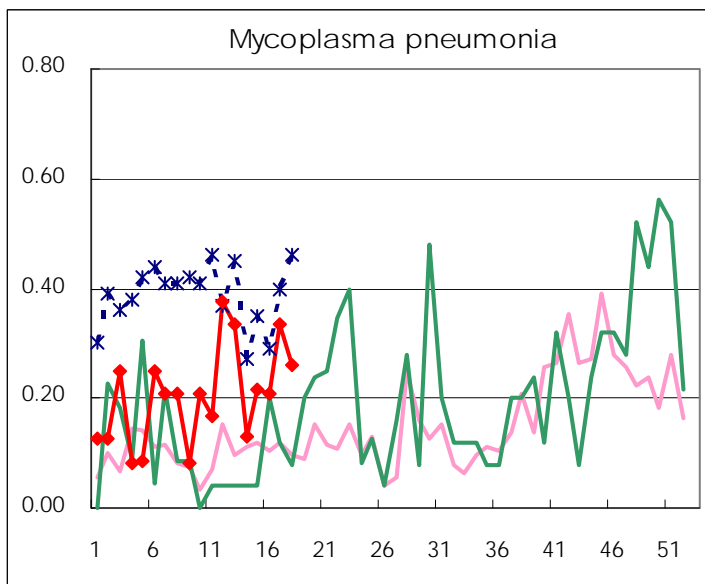
( Blank means 0. )

# Disease Trend Graph (weekly reported cases per sentinel in comparison)









Number of sentinel facilities for weekly reporting		
Types of sentinels	Number of sentinels	Sentinels having reported
Pediatric	150	142
Influenza	290	275
Ophthalmic	39	37
Specially-designated	24	23

**Tokyo Metropolitan Government**  
**Infectious Disease Surveillance Center**