
INFECTIOUS DISEASES WEEKLY REPORT

TOKYO IDWR

Tokyo Metropolitan Infectious Disease Surveillance Center

22 May 2008 / Number 20

Surveillance System in Tokyo, Japan

The infectious diseases which all physicians must report

All physicians must report to health centers the incidence of the diseases which are shown at page one. Health centers electronically report the individual cases to Tokyo Metropolitan Infectious Disease Surveillance Center.

The infectious diseases required to be reported by the sentinels

The numbers of patients who visit the sentinel clinics or hospitals during a week are reported to health centers in Tokyo. And they electronically report the numbers to Tokyo Metropolitan Infectious Disease Surveillance Center. We have about 400 sentinel clinics and hospitals in Tokyo.

1st Week is early January and 52nd Week is end of December.

Tokyo Metropolitan Institute of Public Health
Epidemiological Information Office

TEL:81-3-3363-3213 FAX:81-3-5332-7365

e-mail:idsc@tokyo-eiken.go.jp

URL:idsc.tokyo-eiken.go.jp/

Number of patients with the diseases which all physicians must report

Category	Diseases	Tokyo					Japan	
		17th	18th	19th	20th	Cum 2008	20th	Cum 2008
I	Ebola hemorrhagic fever							
	Crimean-Congo hemorrhagic fever							
	Smallpox							
	South American hemorrhagic fever							
	Plague							
	Marburg disease							
	Lassa fever							
II	Acute poliomyelitis							1
	Tuberculosis	87	78	43	53	1,433	291	8,791
	Diphtheria							
	Severe Acute Respiratory Syndrome(SARS)							
III	Cholera							
	Shigellosis					2		17
	Enterohemorrhagic Escherichia coli infection			1	3	22	4	103
	Typhoid fever	2	4	1	2	24	53	426
	Paratyphoid fever				1	5	1	19
IV	Hepatitis E		1			3		15
	West Nile fever		1			4		18
	Hepatitis A							
	Echinococcosis		1		2	13	1	66
	Yellow fever							5
	Psittacosis							
	Omsk hemorrhagic fever						1	1
	Relapsing fever							
	Kyasanur forest disease							
	Q fever							
	Rabies		1			1		2
	Coccidioidomycosis							
	Monkeypox							
	Hemorrhagic fever with renal syndrome							
	Western equine encephalitis							
	Tick-borne encephalitis							
	Anthrax							
	Scrub typhus(Tsutsugamushi disease)							
	Dengue fever					4	5	67
	Eastern equine encephalitis				1	7	3	22
	Avian influenza virus infection							
	Nipah virus infection							
	Japanese spotted fever							
	Japanese encephalitis							5
	Epidemic typhus							
	Hantavirus pulmonary syndrome							
	Herpes B virus infection							
	Glanders							
	Brucellosis							
	Venezuelan equine encephalitis							
	Hendra virus infection							
	Botulism							
Malaria								
Tularemia					6		11	
Lyme disease							2	
Lyssavirus infection(excluding rabies)							2	
Rift valley fever								
Melioidosis								
Legionellosis								
Leptospirosis	2		1	2	26	10	272	
Rocky mountain spotted fever								

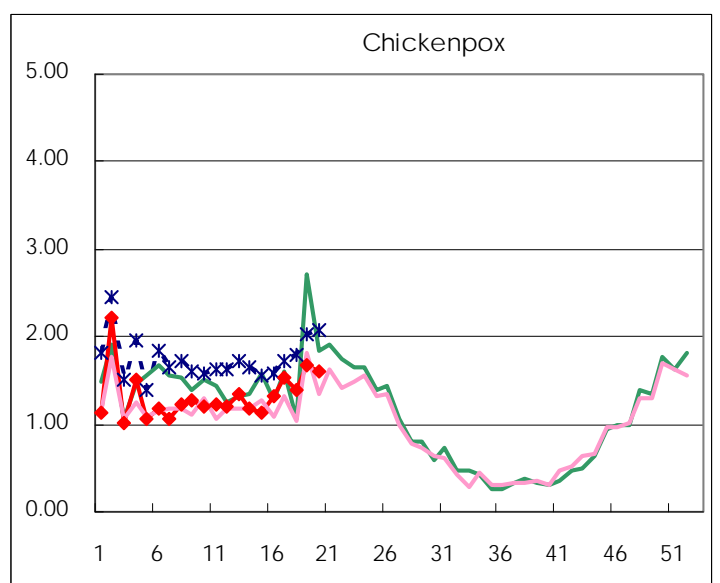
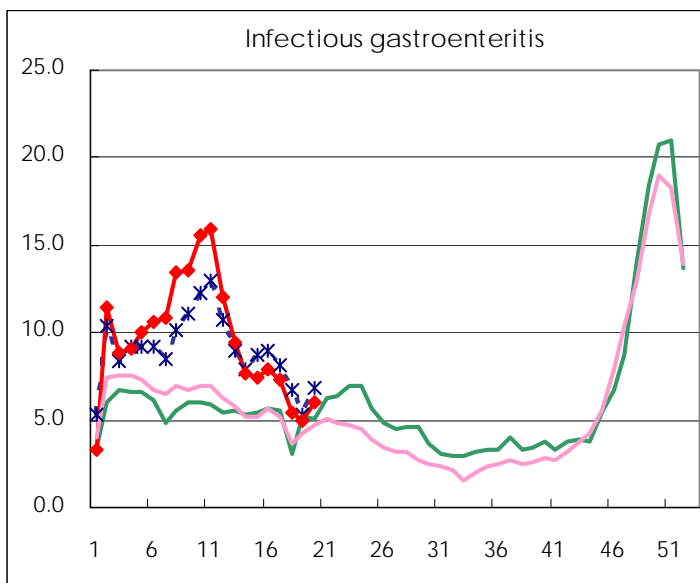
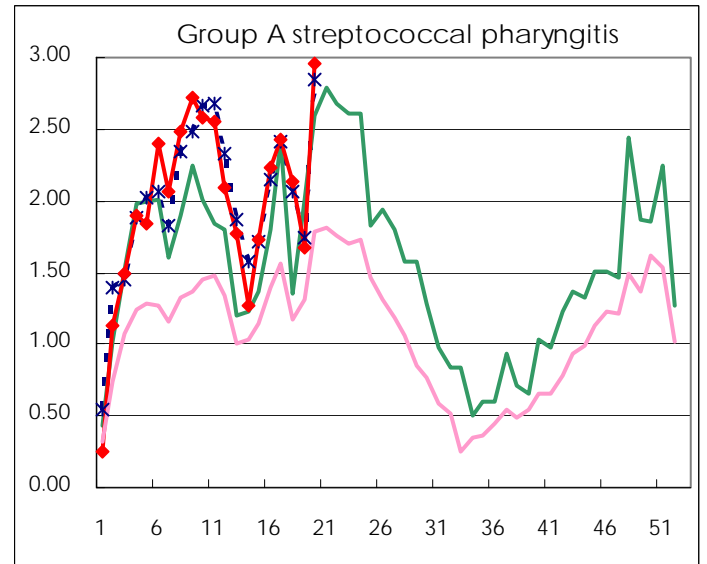
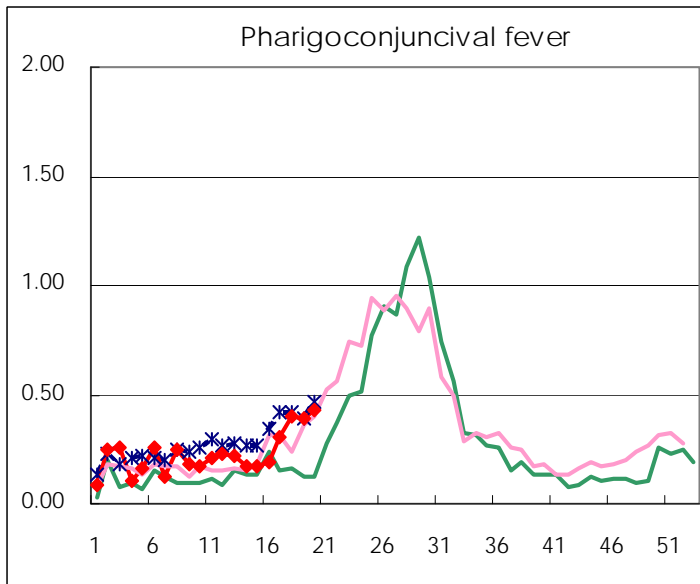
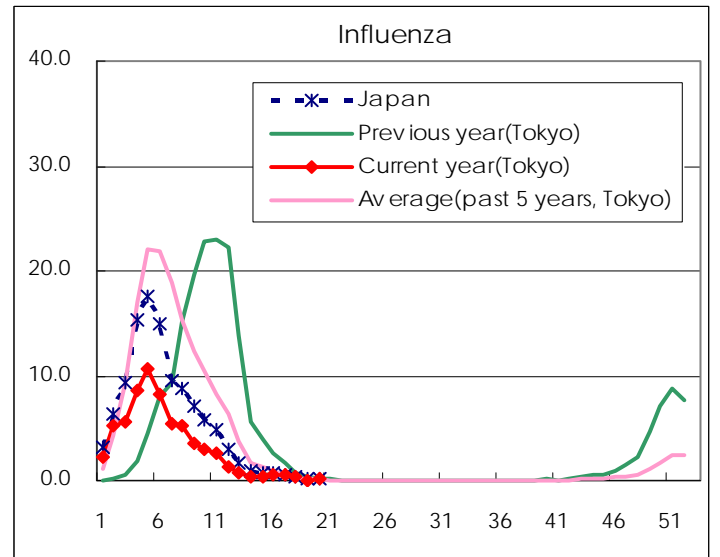
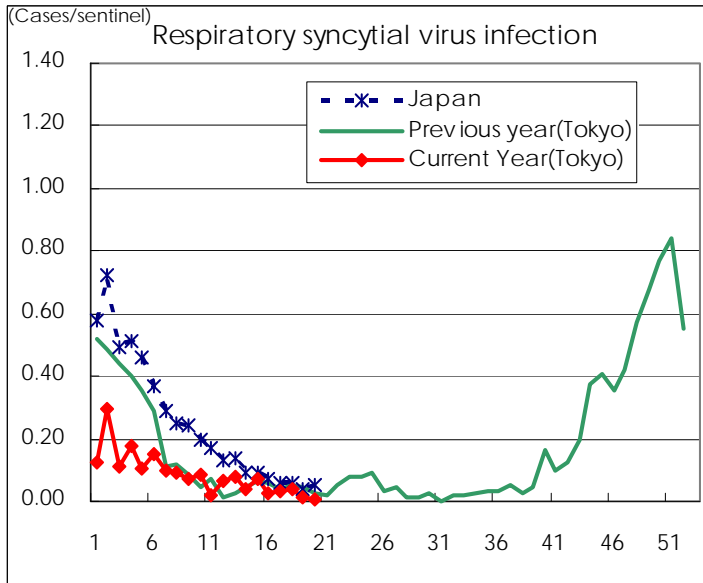
Category	Diseases	Tokyo					Japan	
		17th	18th	19th	20th	Cum 2008	20th	Cum 2008
V	Amebiasis							
	Viral hepatitis(excluding hepatitis A and E)	1	5	2	1	62	4	293
	Acute encephalitis(excluding JE and WNE)		2			11		76
	Cryptosporidiosis					5		79
	Creutzfeldt-Jakob disease					2		2
	Severe invasive streptococcal infections(TSLS)		1			5	2	52
	Acquired immunodeficiency syndrome (AIDS)		2			12	1	50
	Giardiasis	17	14	2	7	210	13	518
	Meningococcal meningitis			1		10		31
	Congenital rubella syndrome				1	1	1	6
	Syphilis							
	Tetanus	3	3	3	3	65	10	275
	Vancomycin-resistant S. aureus infection					2		26
	Vancomycin-resistant Enterococcus infection							
	Rubella			1	1	6		26
Measles	3	2		1	23	5	169	
designated	Influenza (H5N1)	43	45	34	48	895	302	8,073

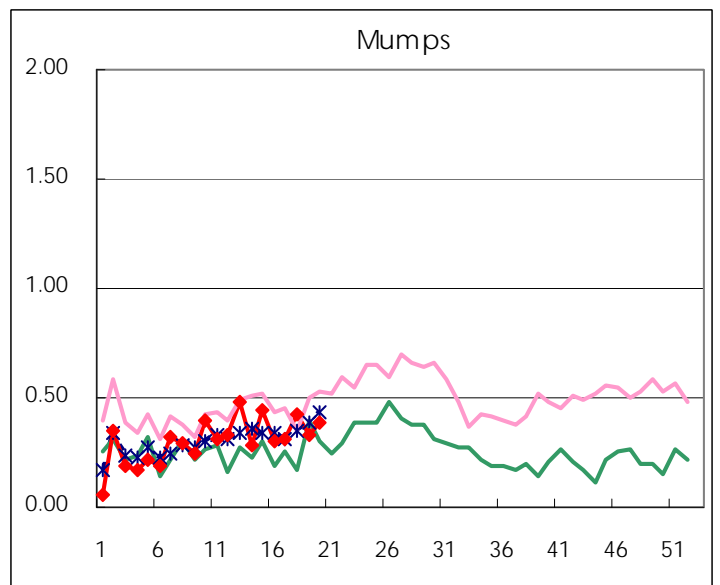
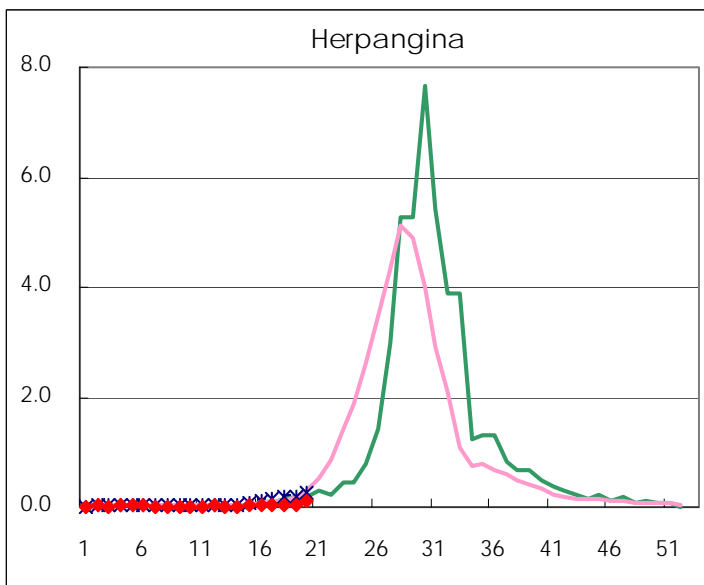
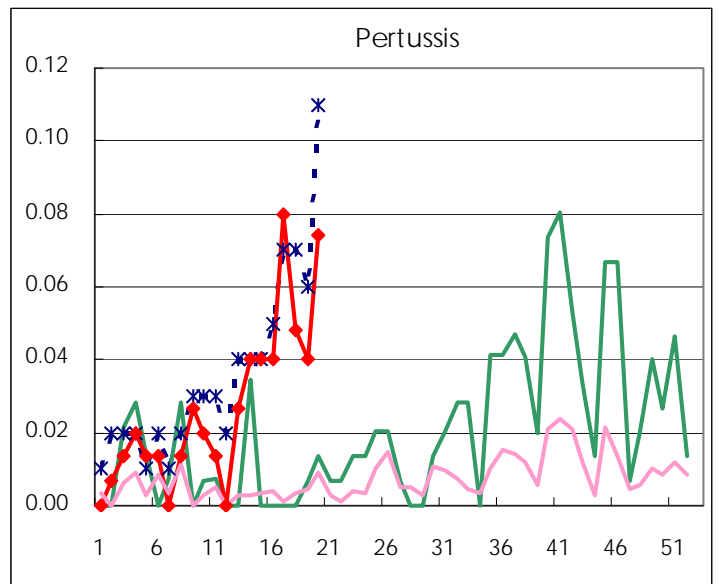
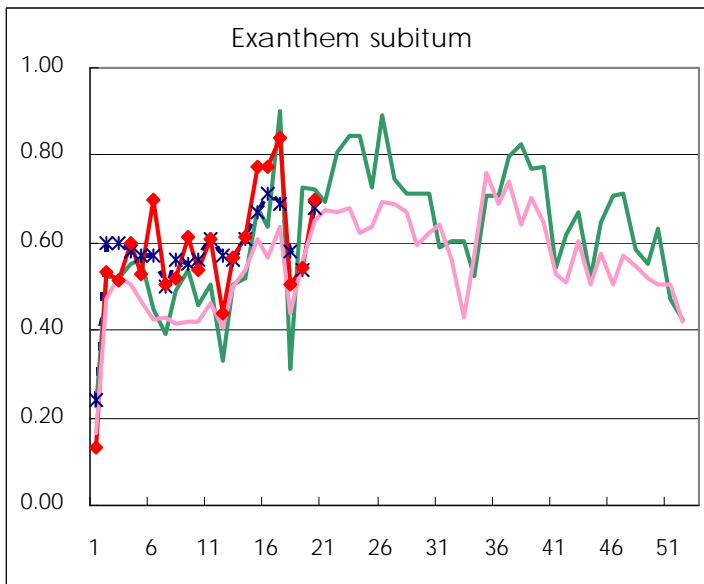
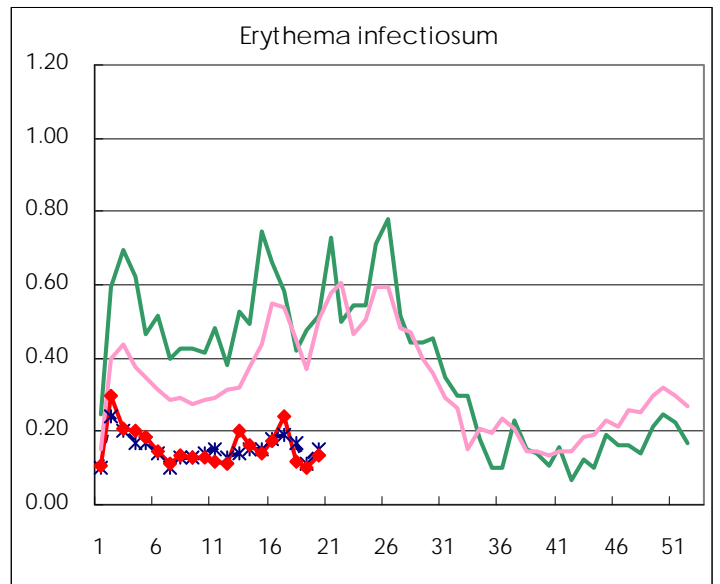
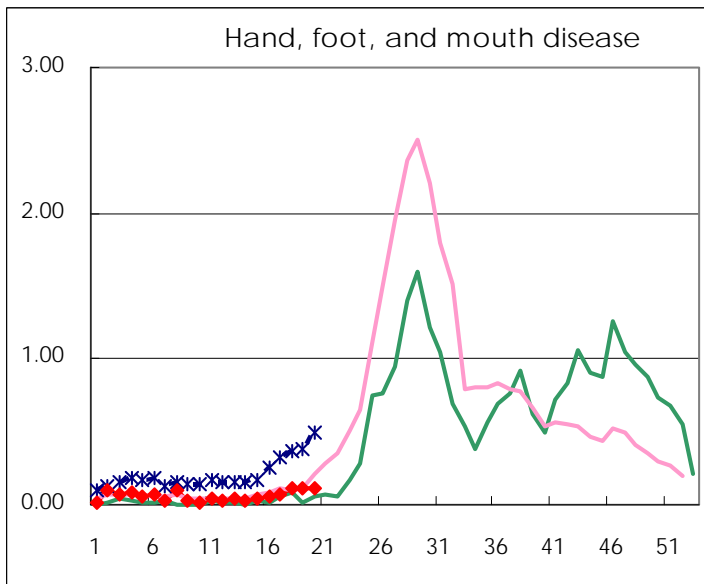
Number of patients with the diseases to be reported
by the designated clinics and hospitals

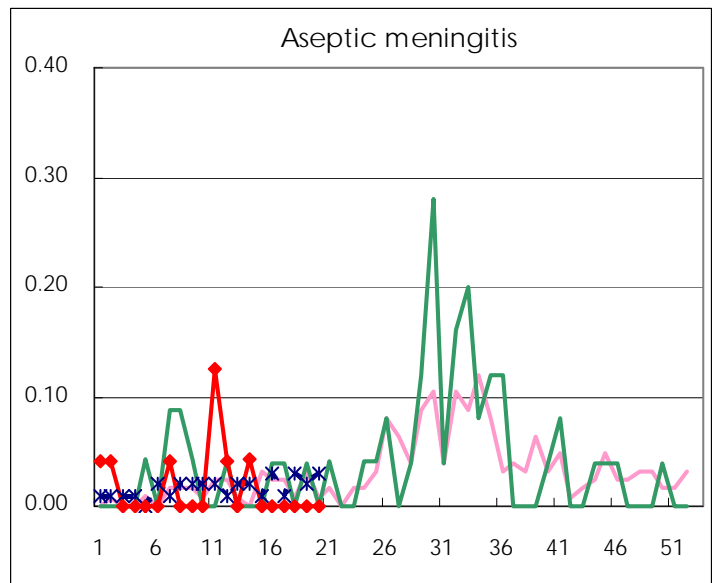
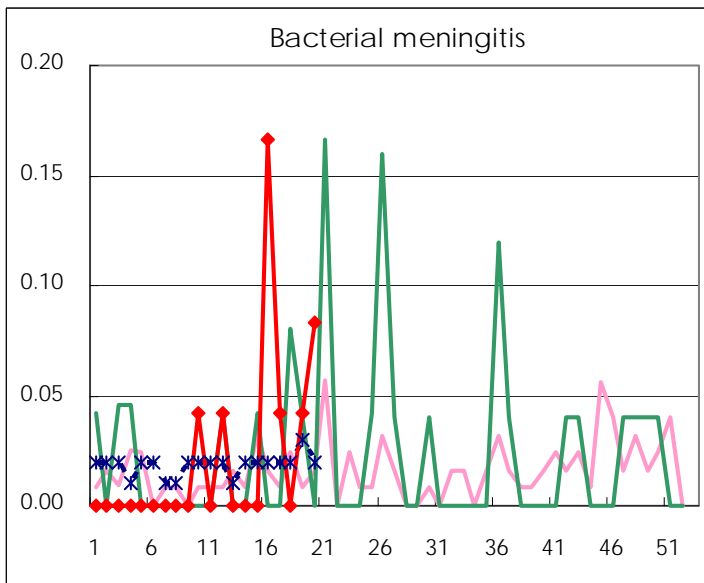
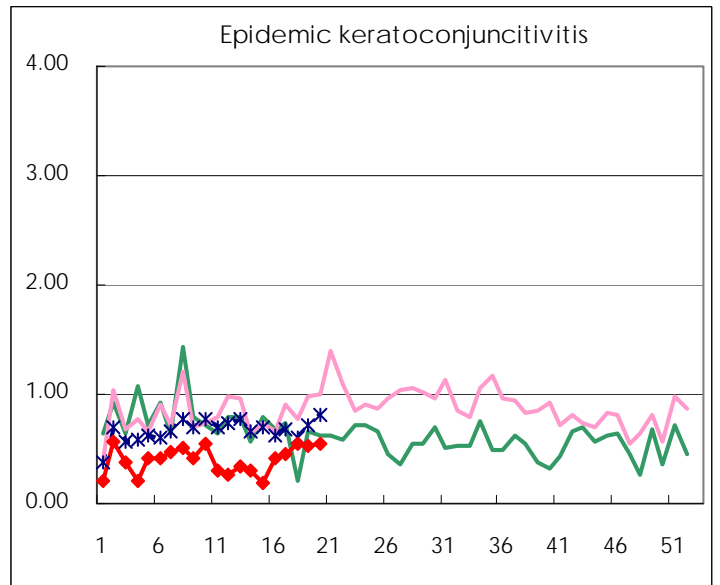
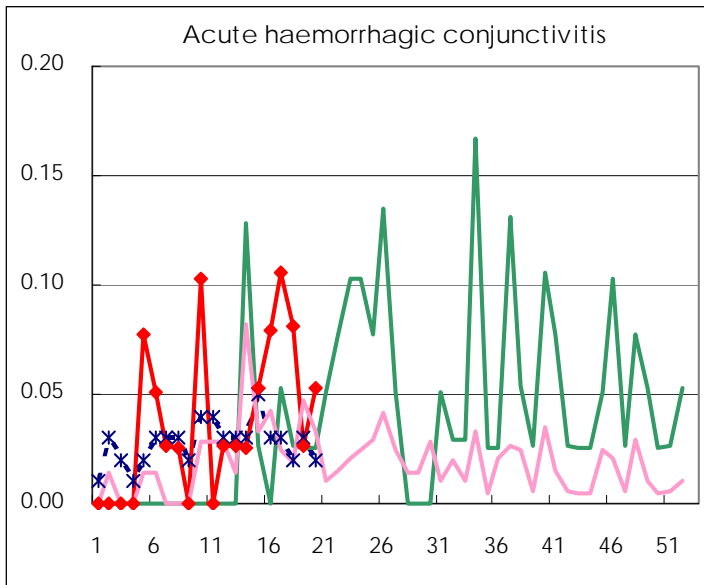
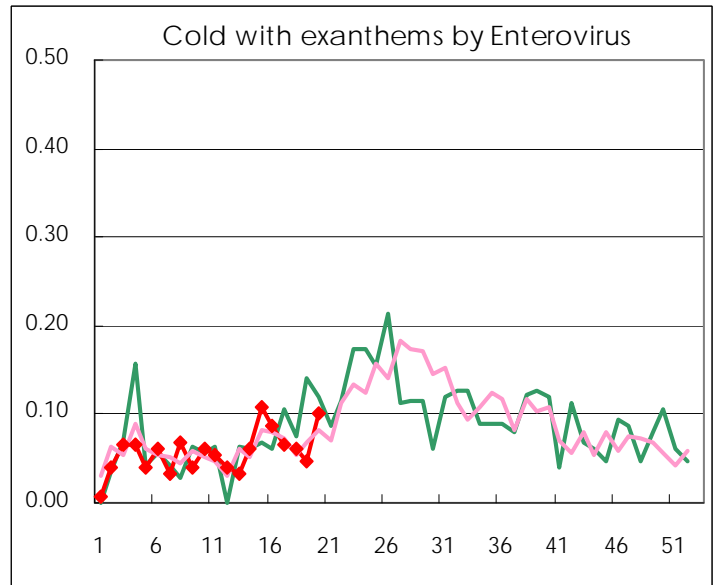
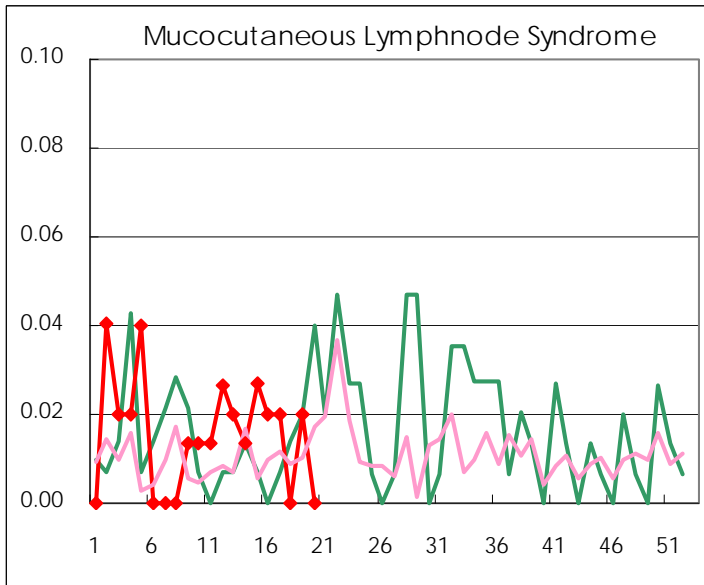
Diseases	2008				
	17th	18th	19th	20th	/sentinel
Respiratory syncytial virus infection	5	6	2	1	0.01
Pharyngoconjunctival fever	46	59	58	64	0.43
Group A streptococcal pharyngitis	365	312	250	437	2.95
Infectious gastroenteritis	1,101	794	745	888	6.00
Chickenpox	231	203	250	239	1.61
Hand, foot, and mouth disease	11	16	16	16	0.11
Erythema infectiosum	36	17	15	20	0.14
Exanthem subitum	126	74	81	103	0.70
Pertussis	12	7	6	11	0.07
Herpangina	8	7	8	15	0.10
Mumps	46	62	49	57	0.39
Cold with exanthems by Enterovirus	10	9	7	15	0.10
Mucocutaneous Lymphnode Syndrome	3		3		
Influenza	135	93	19	48	0.17
Acute hemorrhagic conjunctivitis	4	3	1	2	0.05
Epidemic keratoconjunctivitis	17	20	20	21	0.55
Bacterial meningitis	1		1	2	0.08
Aseptic meningitis					
Mycoplasma pneumonia	8	6	2	6	0.25
Chlamydial pneumonia (excluding psittacosis)	1	2		3	0.13

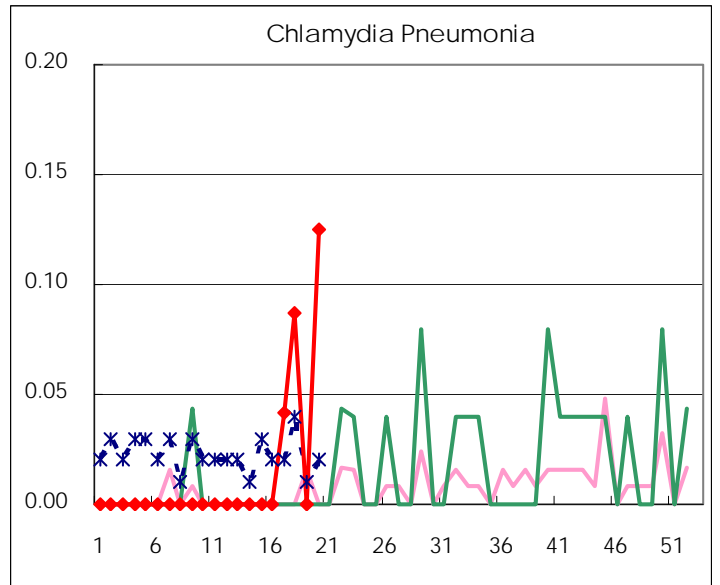
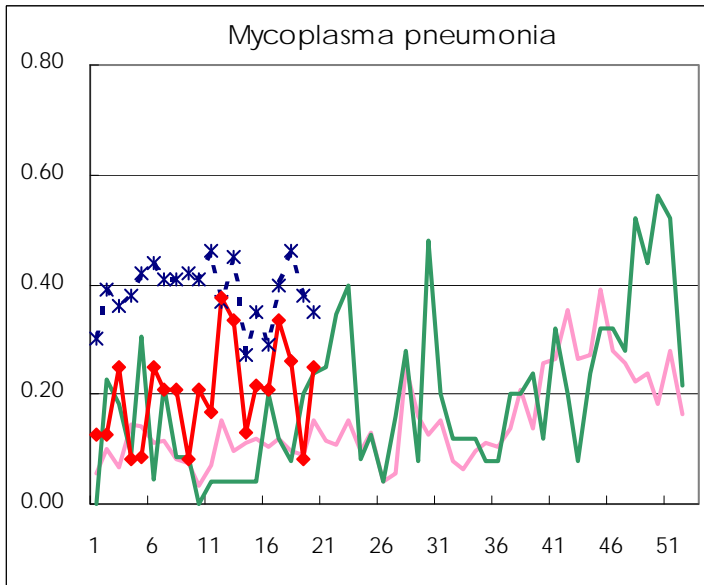
(Blank means 0.)

Disease Trend Graph (weekly reported cases per sentinel in comparison)









Number of sentinel facilities for weekly reporting		
Types of sentinels	Number of sentinels	Sentinels having reported
Pediatric	150	148
Influenza	290	285
Ophthalmic	39	38
Specially-designated	24	24

Tokyo Metropolitan Government
Infectious Disease Surveillance Center