
INFECTIOUS DISEASES WEEKLY REPORT

TOKYO IDWR

Tokyo Metropolitan Infectious Disease Surveillance Center

5 June 2008 / Number 22

Surveillance System in Tokyo, Japan

The infectious diseases which all physicians must report

All physicians must report to health centers the incidence of the diseases which are shown at page one. Health centers electronically report the individual cases to Tokyo Metropolitan Infectious Disease Surveillance Center.

The infectious diseases required to be reported by the sentinels

The numbers of patients who visit the sentinel clinics or hospitals during a week are reported to health centers in Tokyo. And they electronically report the numbers to Tokyo Metropolitan Infectious Disease Surveillance Center. We have about 400 sentinel clinics and hospitals in Tokyo.

1st Week is early January and 52nd Week is end of December.

Tokyo Metropolitan Institute of Public Health
Epidemiological Information Office

TEL:81-3-3363-3213 FAX:81-3-5332-7365

e-mail:idsc@tokyo-eiken.go.jp

URL:idsc.tokyo-eiken.go.jp/

Number of patients with the diseases which all physicians must report

Category	Diseases	Tokyo					Japan	
		19th	20th	21th	22th	Cum 2008	22th	Cum 2008
I	Ebola hemorrhagic fever							
	Crimean-Congo hemorrhagic fever							
	Smallpox							
	South American hemorrhagic fever							
	Plague							
	Marburg disease							
	Lassa fever							
II	Acute poliomyelitis							1
	Tuberculosis	55	85	83	67	1,668	330	9,999
	Diphtheria							
	Severe Acute Respiratory Syndrome(SARS)							
III	Cholera					2		17
	Shigellosis	1	3		1	23	1	108
	Enterohemorrhagic Escherichia coli infection	1	2	2	1	27	43	544
	Typhoid fever		1		1	6	2	24
	Paratyphoid fever					3		15
IV	Hepatitis E					4	1	19
	West Nile fever							
	Hepatitis A		2	1		14		71
	Echinococcosis							6
	Yellow fever							
	Psittacosis							4
	Omsk hemorrhagic fever							
	Relapsing fever							
	Kyasanur forest disease							
	Q fever					1		2
	Rabies							
	Coccidioidomycosis							1
	Monkeypox							
	Hemorrhagic fever with renal syndrome							
	Western equine encephalitis							
	Tick-borne encephalitis							
	Anthrax							
	Scrub typhus(Tsutsugamushi disease)					4	7	89
	Dengue fever		1		1	8	2	25
	Eastern equine encephalitis							
	Avian influenza virus infection							
	Nipah virus infection							
	Japanese spotted fever						4	11
	Japanese encephalitis							
	Epidemic typhus							
	Hantavirus pulmonary syndrome							
	Herpes B virus infection							
	Glanders							
	Brucellosis							
	Venezuelan equine encephalitis							
	Hendra virus infection							
	Botulism							
Malaria					6	1	13	
Tularemia							2	
Lyme disease							2	
Lyssavirus infection(excluding rabies)								
Rift valley fever								
Melioidosis								
Legionellosis	1	2	3	2	31	6	299	
Leptospirosis								
Rocky mountain spotted fever								

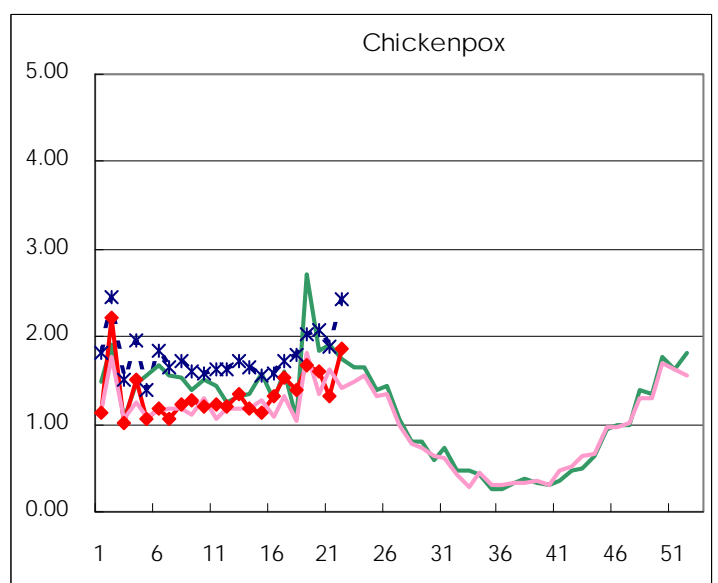
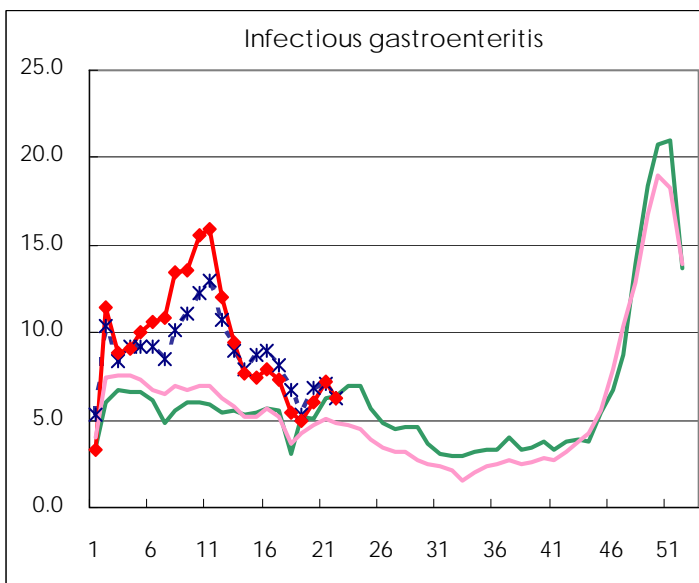
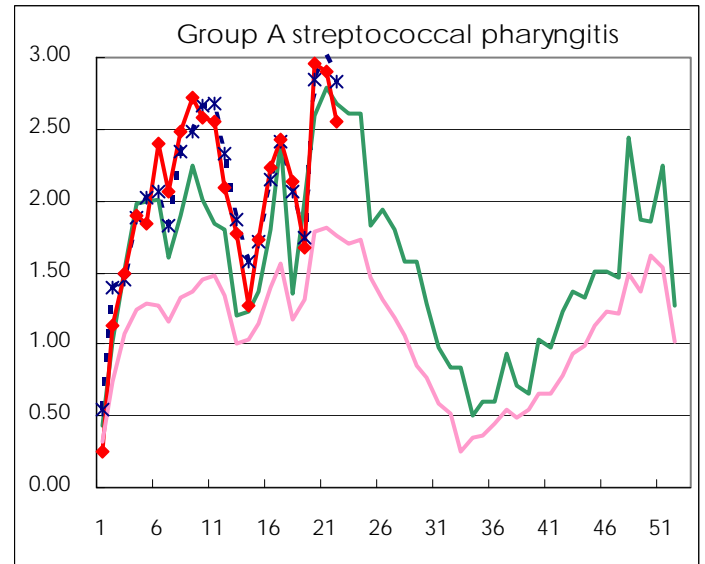
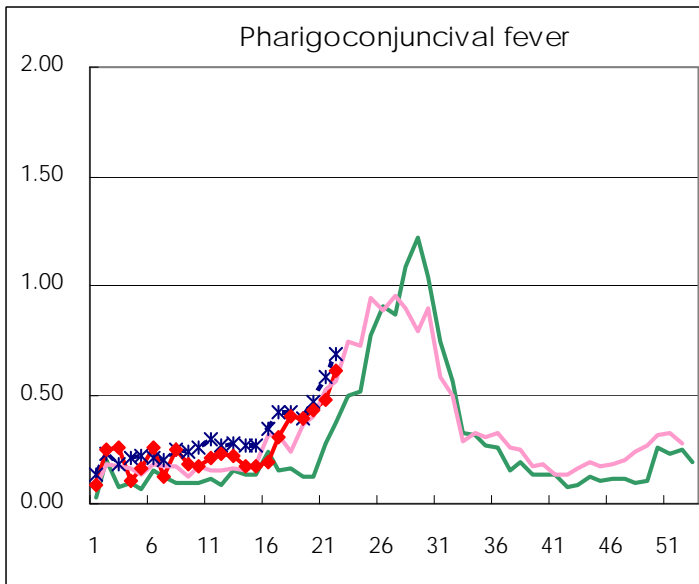
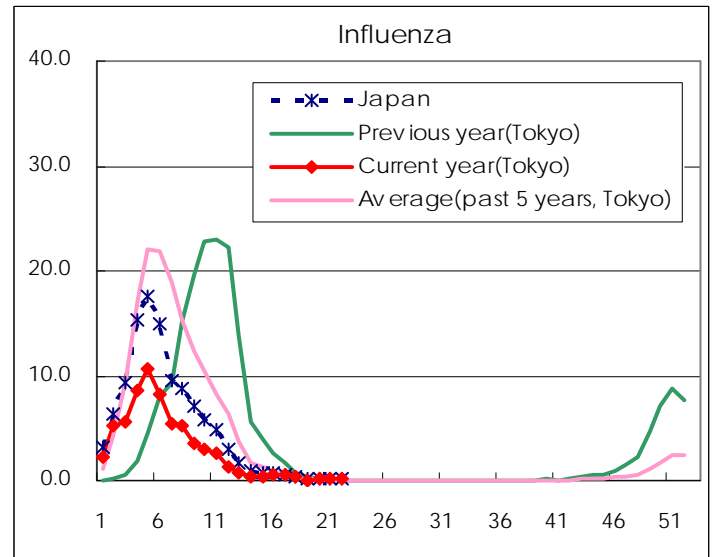
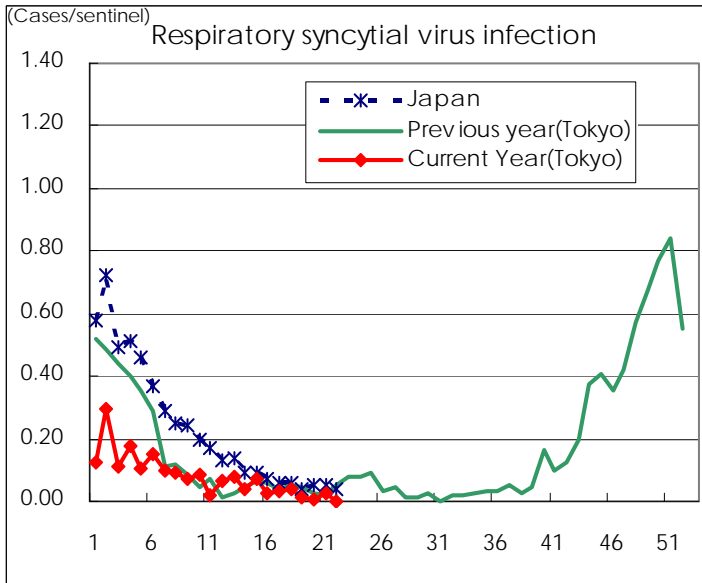
Category	Diseases	Tokyo					Japan	
		19th	20th	21th	22th	Cum 2008	22th	Cum 2008
V	Amebiasis	2	1	5	3	70	10	333
	Viral hepatitis(excluding hepatitis A and E)					11	5	87
	Acute encephalitis(excluding JE and WNE)					5	1	83
	Cryptosporidiosis					2		2
	Creutzfeldt-Jakob disease			3		8	2	66
	Severe invasive streptococcal infections(TSLS)			1		13		56
	Acquired immunodeficiency syndrome (AIDS)	2	7	17	7	234	10	573
	Giardiasis	1		1		11		32
	Meningococcal meningitis		1			1		8
	Congenital rubella syndrome							
	Syphilis	3	3	4	6	75	14	314
	Tetanus					2	2	32
	Vancomycin-resistant S. aureus infection						1	1
	Vancomycin-resistant Enterococcus infection	1	1	1	1	8	2	30
	Rubella		1	1		24	7	190
Measles	35	49	34	23	954	277	8,775	
designated	Influenza (H5N1)							

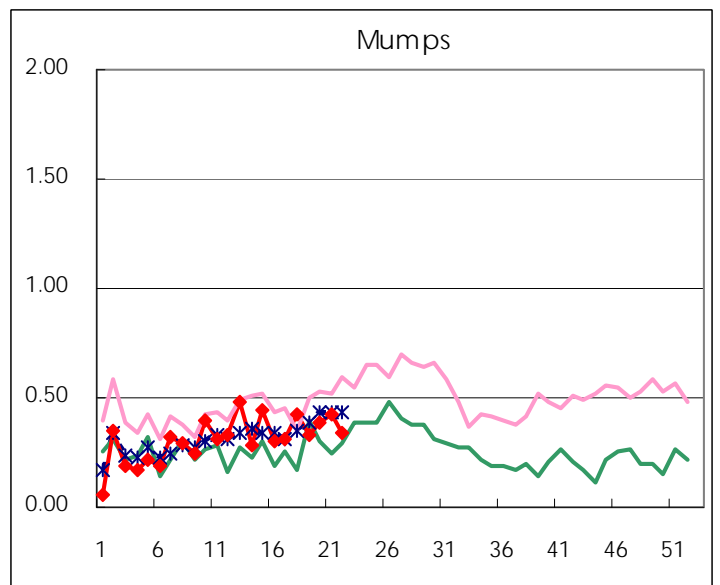
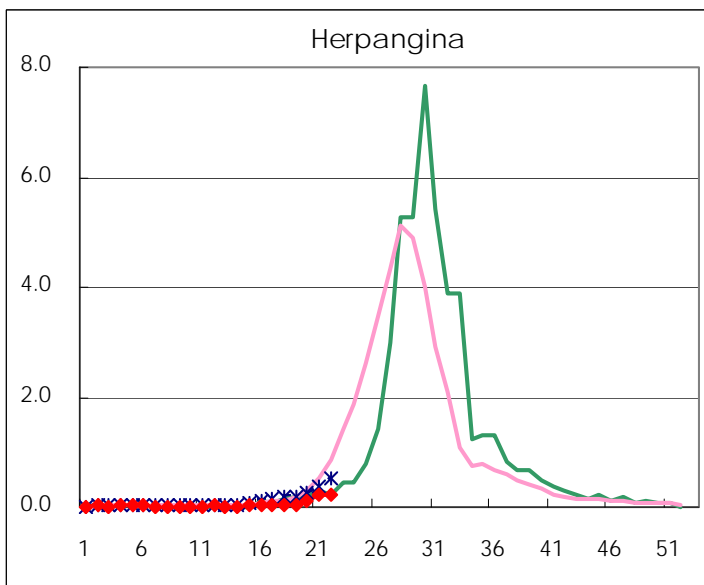
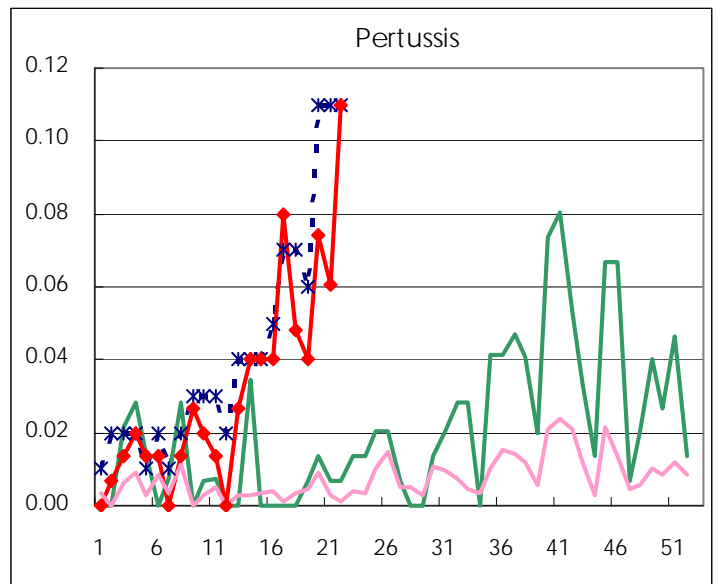
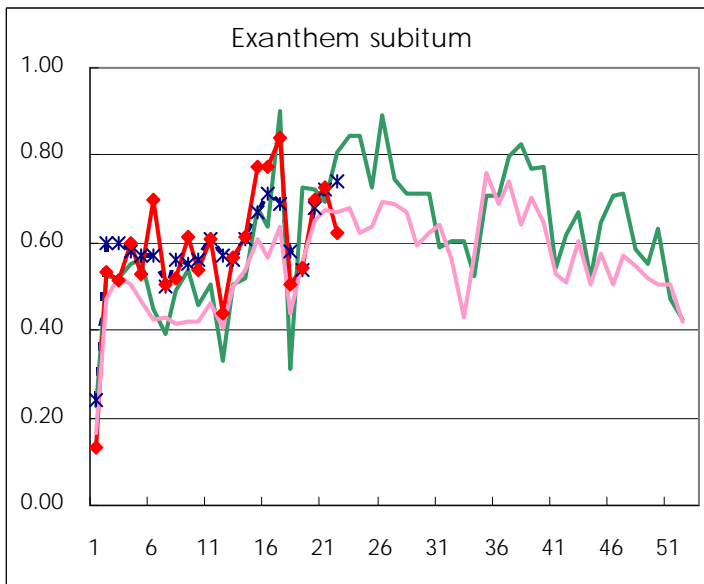
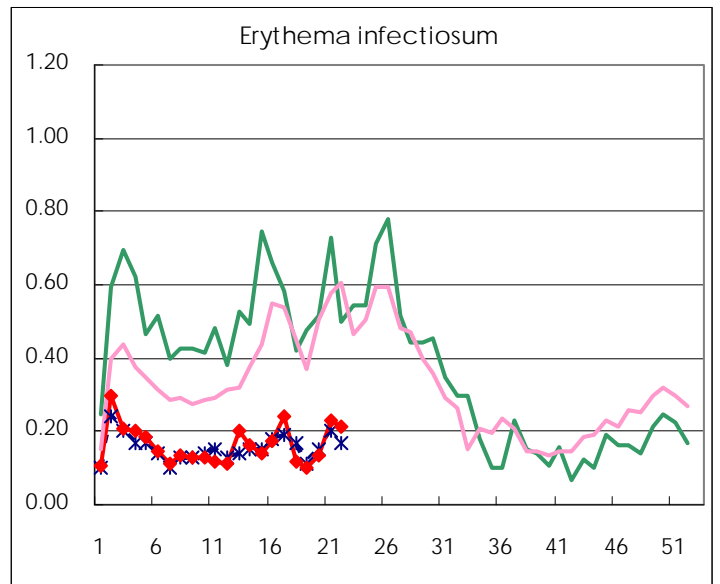
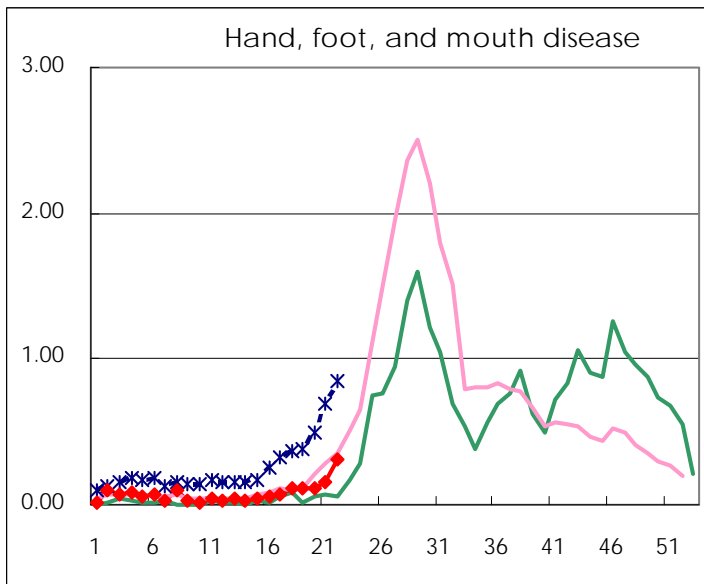
Number of patients with the diseases to be reported
by the designated clinics and hospitals

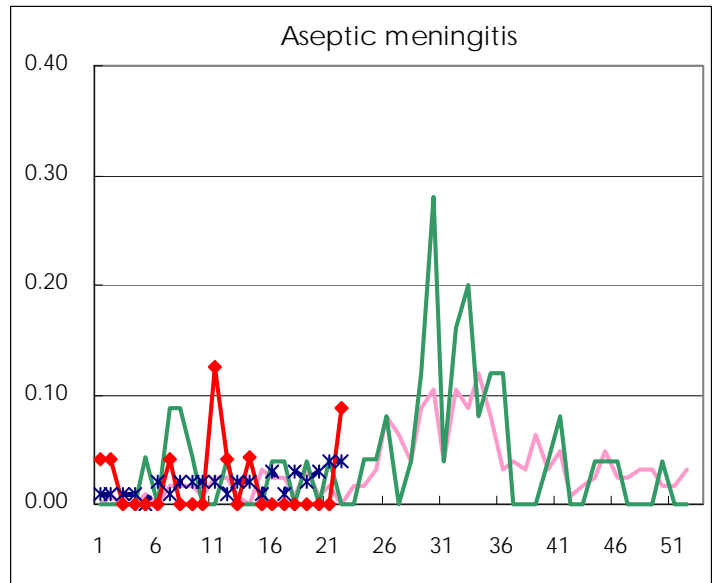
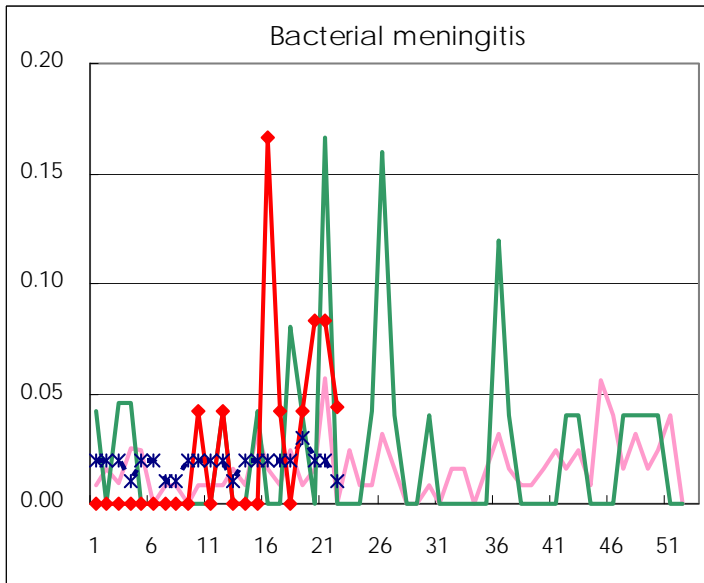
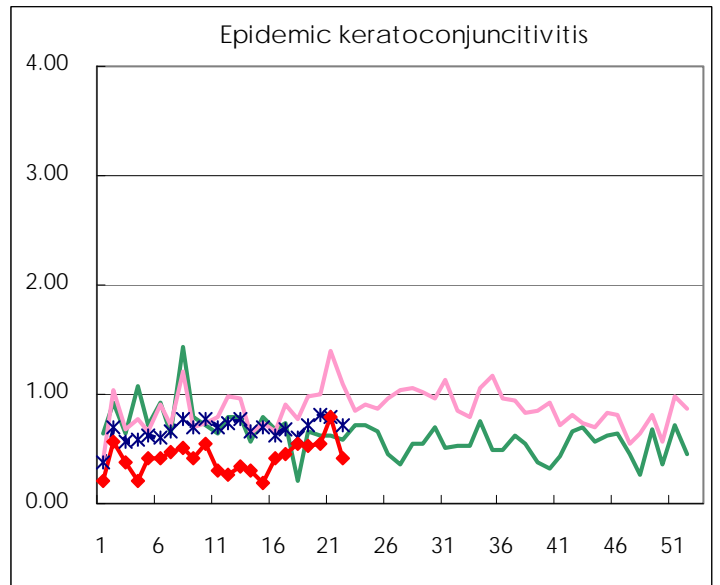
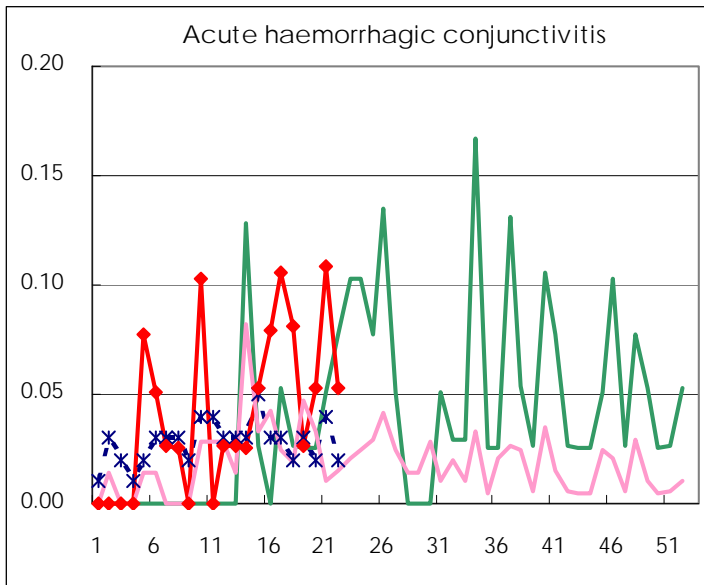
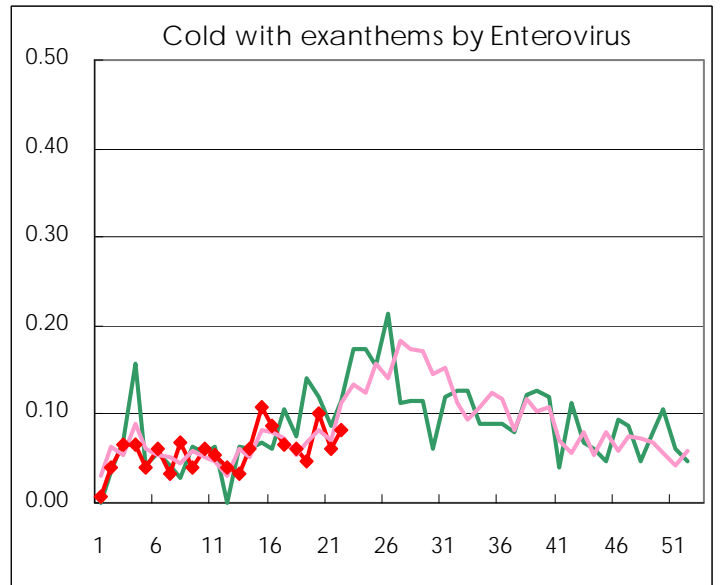
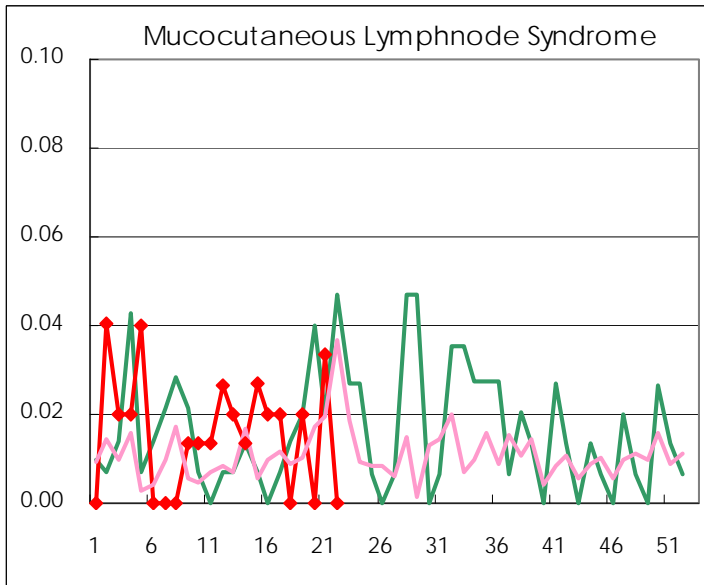
Diseases	2008				
	19th	20th	21th	22th	/sentinel
Respiratory syncytial virus infection	2	1	4		
Pharyngoconjunctival fever	58	64	71	89	0.61
Group A streptococcal pharyngitis	250	437	433	373	2.55
Infectious gastroenteritis	745	888	1,075	905	6.20
Chickenpox	250	239	198	271	1.86
Hand, foot, and mouth disease	16	16	24	46	0.32
Erythema infectiosum	15	20	34	31	0.21
Exanthem subitum	81	103	108	91	0.62
Pertussis	6	11	9	16	0.11
Herpangina	8	15	33	33	0.23
Mumps	49	57	63	50	0.34
Cold with exanthems by Enterovirus	7	15	9	12	0.08
Mucocutaneous Lymphnode Syndrome	3		5		
Influenza	19	48	39	37	0.13
Acute hemorrhagic conjunctivitis	1	2	4	2	0.05
Epidemic keratoconjunctivitis	20	21	29	16	0.42
Bacterial meningitis	1	2	2	1	0.04
Aseptic meningitis				2	0.09
Mycoplasma pneumonia	2	6	2	1	0.04
Chlamydial pneumonia (excluding psittacosis)		3			

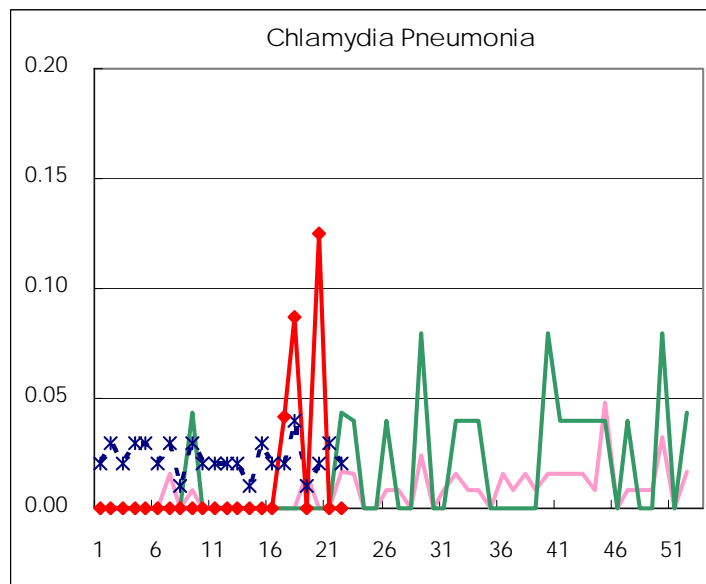
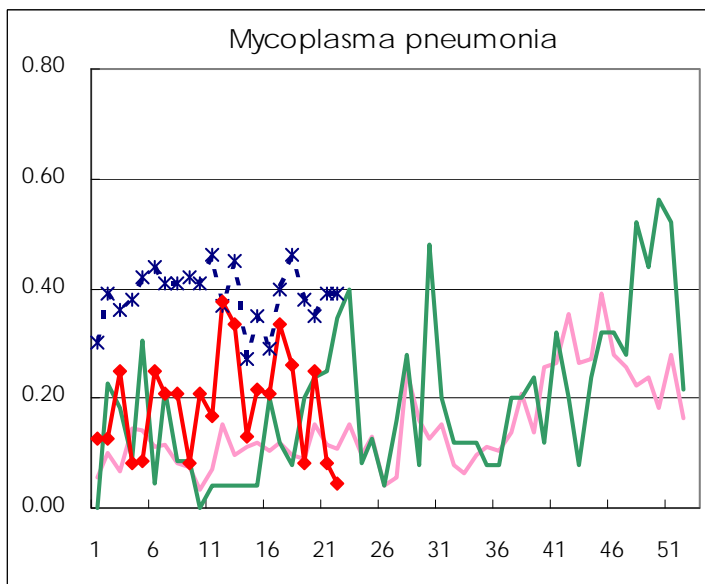
(Blank means 0.)

Disease Trend Graph (weekly reported cases per sentinel in comparison)









Number of sentinel facilities for weekly reporting		
Types of sentinels	Number of sentinels	Sentinels having reported
Pediatric	150	146
Influenza	290	284
Ophthalmic	39	38
Specially-designated	24	23

Tokyo Metropolitan Government
Infectious Disease Surveillance Center