
INFECTIOUS DISEASES WEEKLY REPORT

TOKYO IDWR

Tokyo Metropolitan Infectious Disease Surveillance Center

12 June 2008 / Number 23

Surveillance System in Tokyo, Japan

The infectious diseases which all physicians must report

All physicians must report to health centers the incidence of the diseases which are shown at page one. Health centers electronically report the individual cases to Tokyo Metropolitan Infectious Disease Surveillance Center.

The infectious diseases required to be reported by the sentinels

The numbers of patients who visit the sentinel clinics or hospitals during a week are reported to health centers in Tokyo. And they electronically report the numbers to Tokyo Metropolitan Infectious Disease Surveillance Center. We have about 400 sentinel clinics and hospitals in Tokyo.

1st Week is early January and 52nd Week is end of December.

Tokyo Metropolitan Institute of Public Health
Epidemiological Information Office

TEL:81-3-3363-3213 FAX:81-3-5332-7365

e-mail:idsc@tokyo-eiken.go.jp

URL:idsc.tokyo-eiken.go.jp/

Number of patients with the diseases which all physicians must report

Category	Diseases	Tokyo					Japan	
		20th	21th	22th	23th	Cum 2008	23th	Cum 2008
I	Ebola hemorrhagic fever							
	Crimean-Congo hemorrhagic fever							
	Smallpox							
	South American hemorrhagic fever							
	Plague							
	Marburg disease							
	Lassa fever							
II	Acute poliomyelitis							1
	Tuberculosis	85	86	79	53	1,755	314	10,542
	Diphtheria							
	Severe Acute Respiratory Syndrome(SARS)							
III	Cholera					2	2	19
	Shigellosis	3		1		23	3	113
	Enterohemorrhagic Escherichia coli infection	2	2	1	5	32	45	600
	Typhoid fever	1		1		6	1	25
	Paratyphoid fever					3		15
IV	Hepatitis E					4	1	20
	West Nile fever							
	Hepatitis A	2	1		1	15	4	77
	Echinococcosis							6
	Yellow fever							
	Psittacosis						1	4
	Omsk hemorrhagic fever							
	Relapsing fever							
	Kyasanur forest disease							
	Q fever					1		2
	Rabies							
	Coccidioidomycosis							1
	Monkeypox							
	Hemorrhagic fever with renal syndrome							
	Western equine encephalitis							
	Tick-borne encephalitis							
	Anthrax							
	Scrub typhus(Tsutsugamushi disease)					4	5	94
	Dengue fever	1		1		8		26
	Eastern equine encephalitis							
	Avian influenza virus infection							
	Nipah virus infection							
	Japanese spotted fever						1	13
	Japanese encephalitis							
	Epidemic typhus							
	Hantavirus pulmonary syndrome							
	Herpes B virus infection							
	Glanders							
	Brucellosis							
	Venezuelan equine encephalitis							
	Hendra virus infection							
	Botulism							
	Malaria					6		14
Tularemia							2	
Lyme disease							2	
Lyssavirus infection(excluding rabies)								
Rift valley fever								
Melioidosis								
Legionellosis	2	3	2		31	16	319	
Leptospirosis								
Rocky mountain spotted fever								

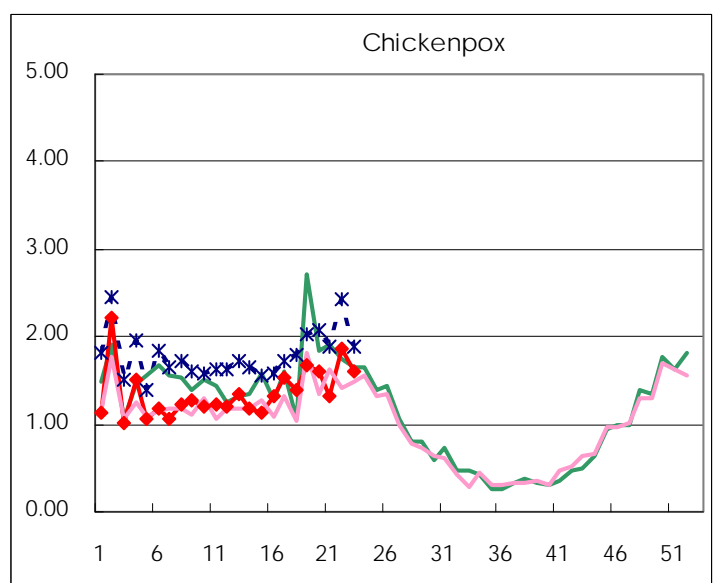
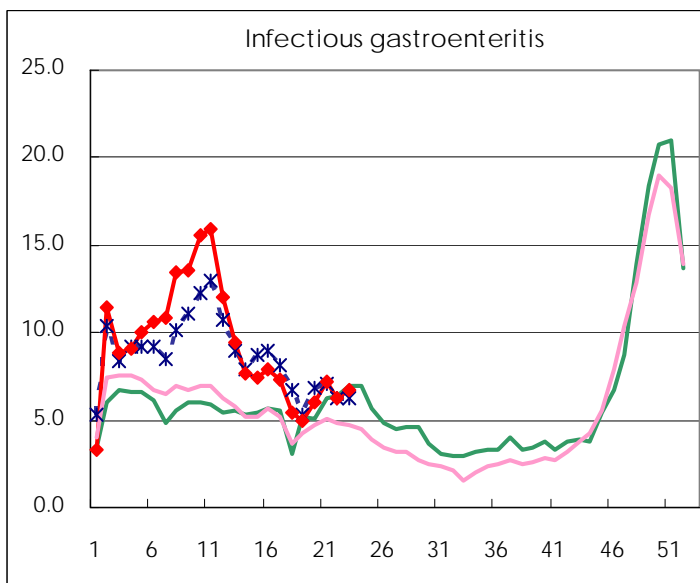
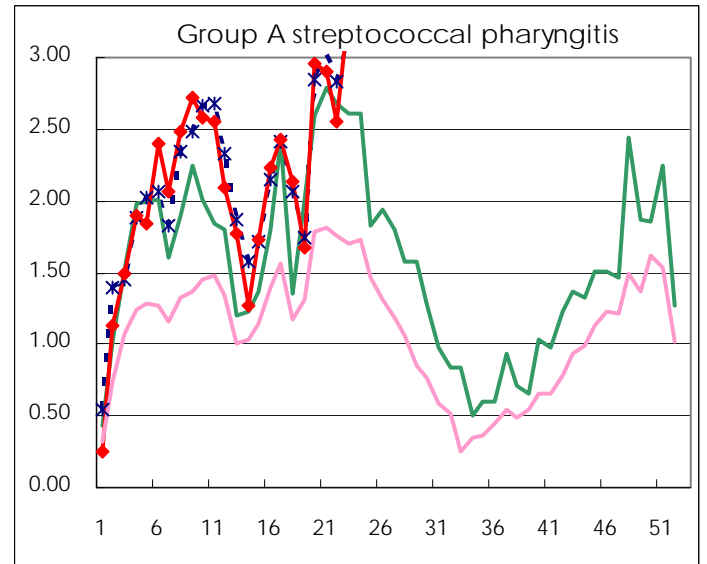
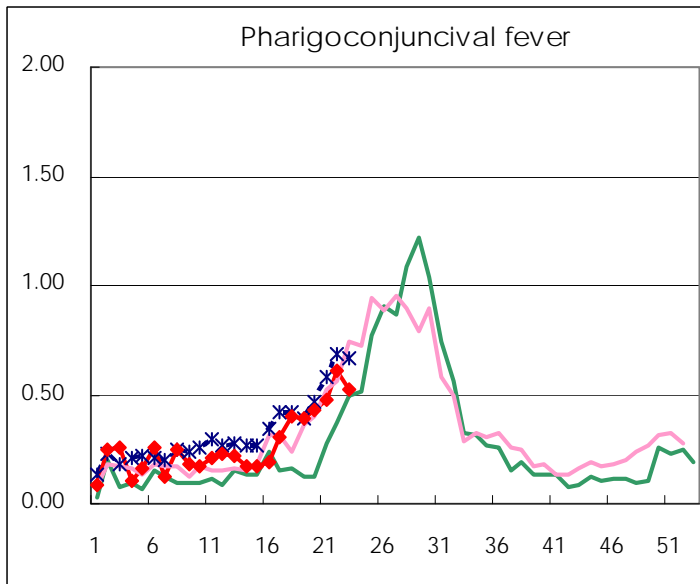
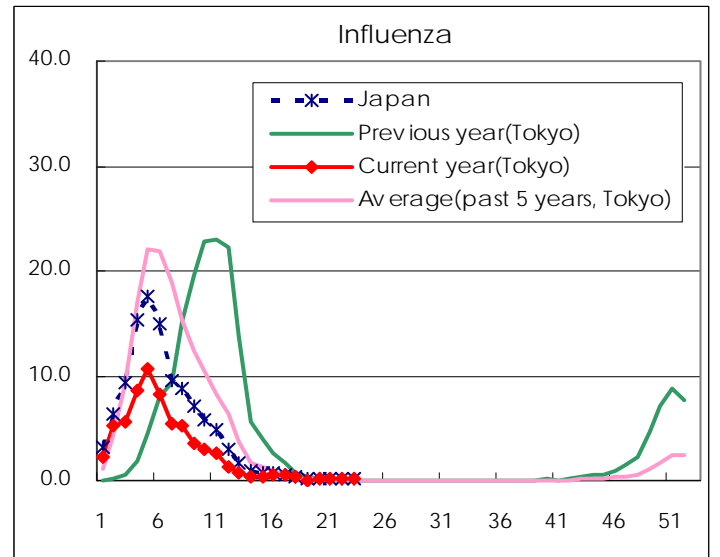
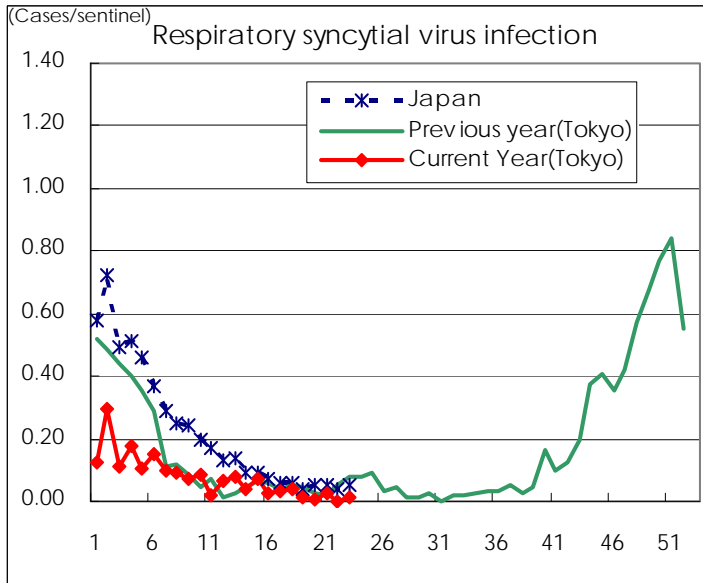
Category	Diseases	Tokyo					Japan	
		20th	21th	22th	23th	Cum 2008	23th	Cum 2008
V	Amebiasis	1	5	3	5	75	16	360
	Viral hepatitis(excluding hepatitis A and E)				1	12	2	93
	Acute encephalitis(excluding JE and WNE)					5	2	90
	Cryptosporidiosis					2		2
	Creutzfeldt-Jakob disease		3			8	2	69
	Severe invasive streptococcal infections(TSLS)		1		1	14		59
	Acquired immunodeficiency syndrome (AIDS)	7	17	7	7	241	15	603
	Giardiasis		1			11	1	33
	Meningococcal meningitis	1			1	2	1	9
	Congenital rubella syndrome							
	Syphilis	3	4	7	9	85	12	334
	Tetanus					2	3	35
	Vancomycin-resistant S. aureus infection							
	Vancomycin-resistant Enterococcus infection	1	1	1		8		30
	Rubella	1	1			24	5	197
Measles	49	34	22	26	979	243	9,091	
designated	Influenza (H5N1)							

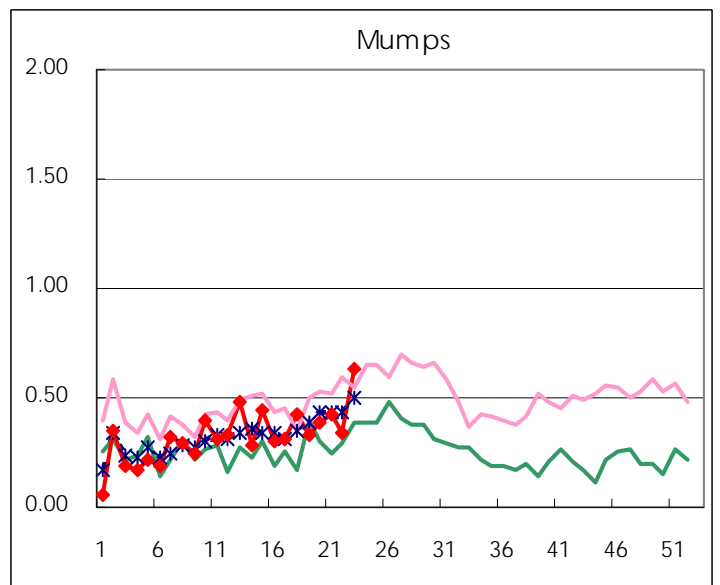
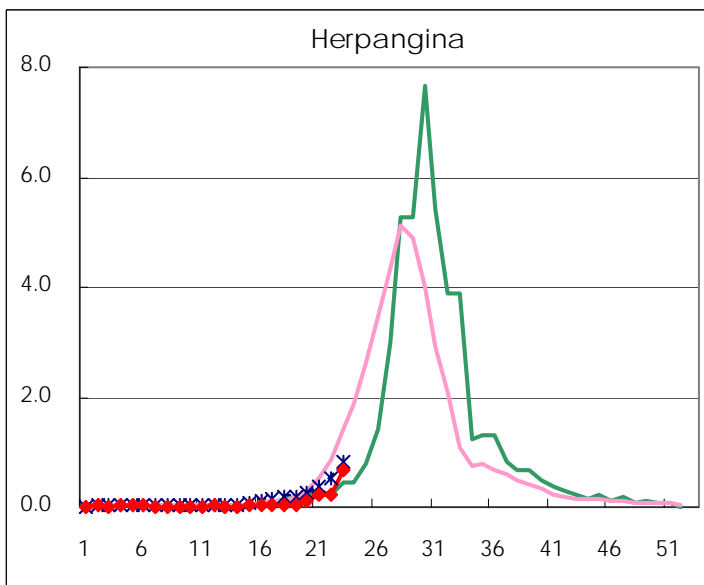
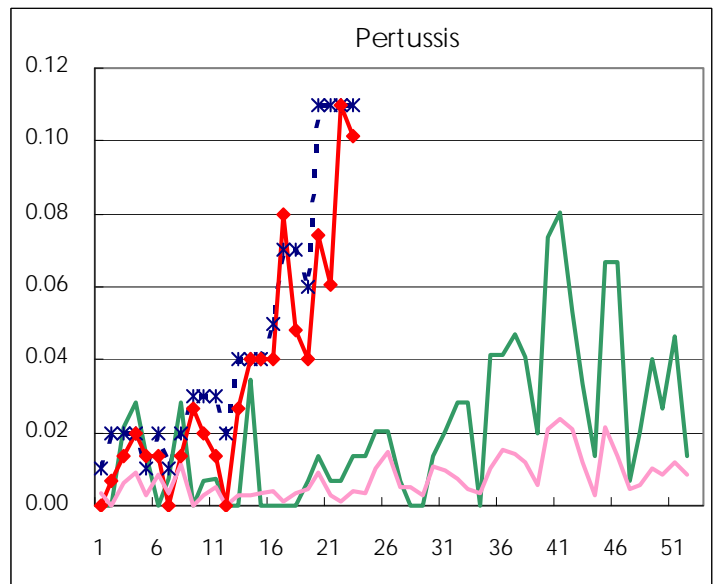
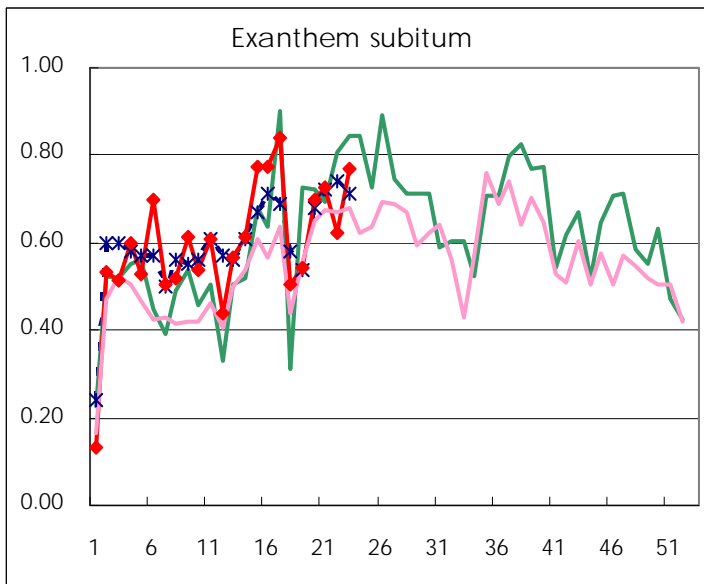
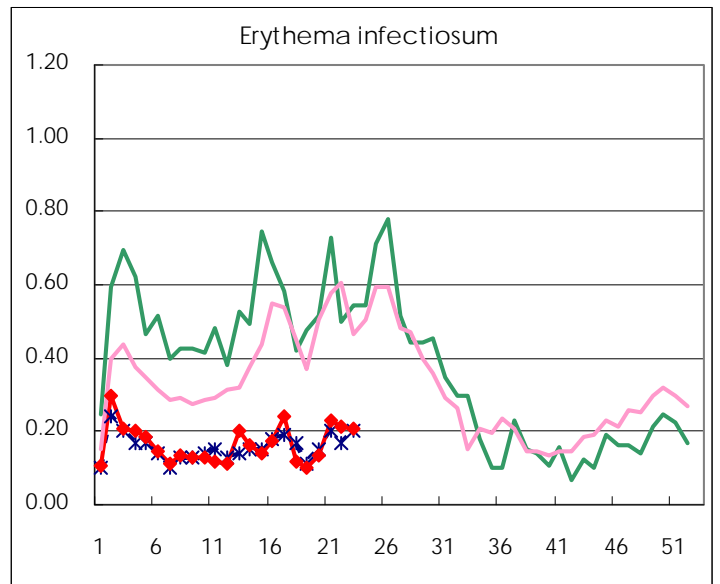
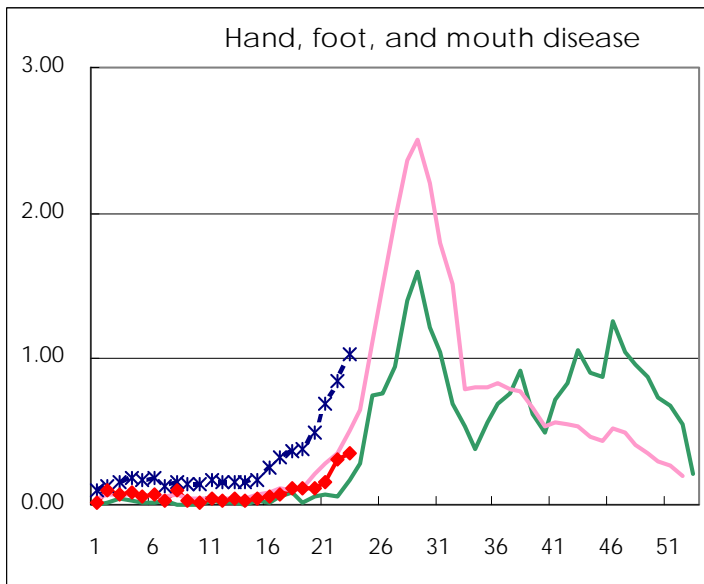
Number of patients with the diseases to be reported
by the designated clinics and hospitals

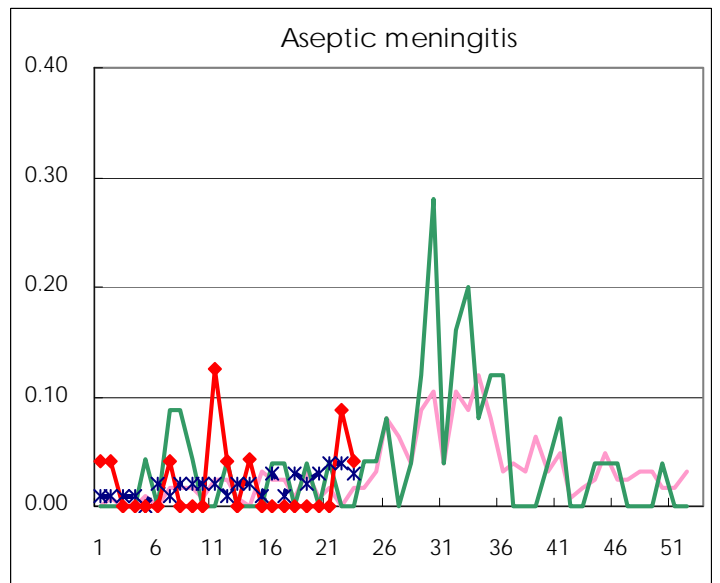
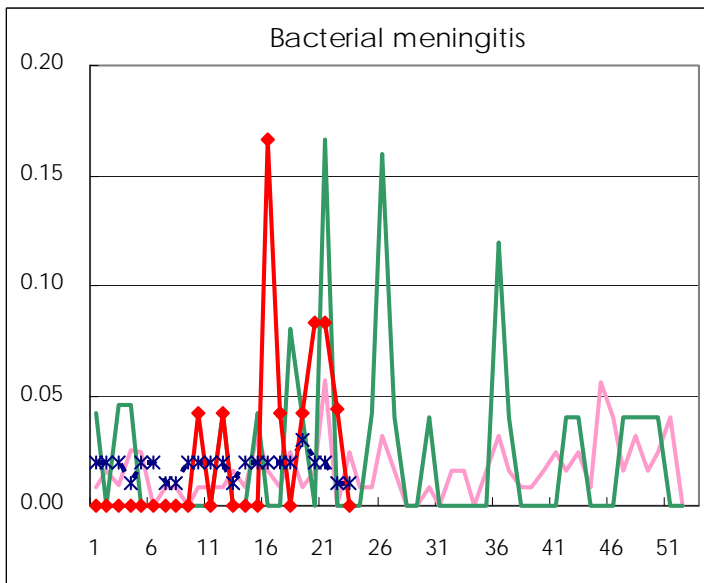
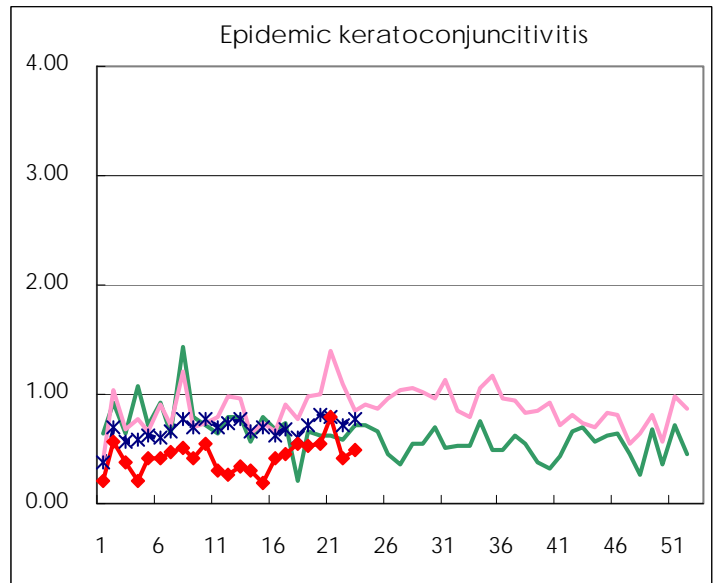
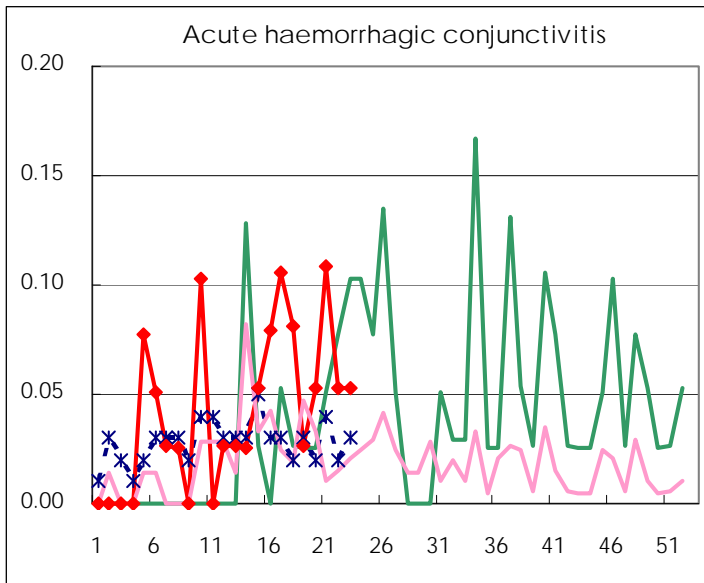
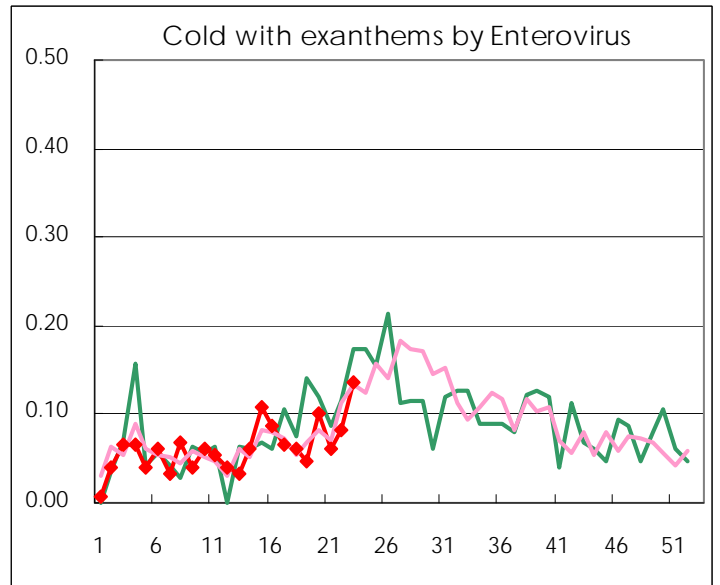
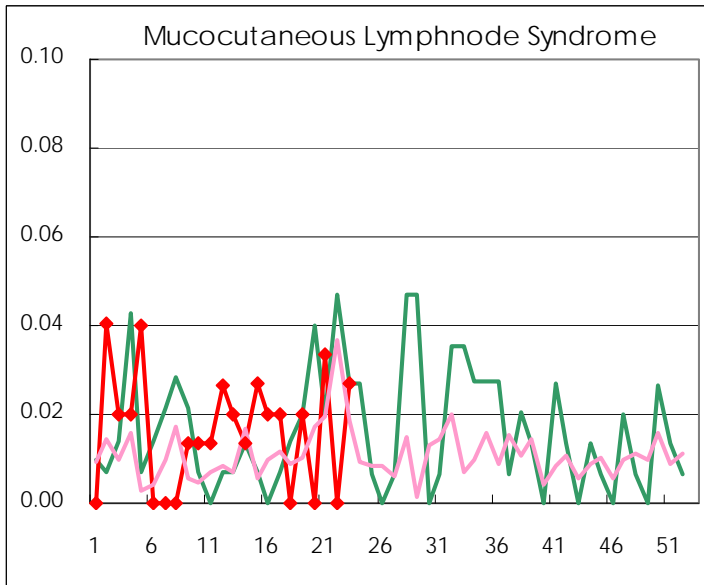
Diseases	2008				
	20th	21th	22th	23th	/sentinel
Respiratory syncytial virus infection	1	4		2	0.01
Pharyngoconjunctival fever	64	71	89	77	0.52
Group A streptococcal pharyngitis	437	433	373	494	3.34
Infectious gastroenteritis	888	1,075	905	992	6.70
Chickenpox	239	198	271	238	1.61
Hand, foot, and mouth disease	16	24	46	53	0.36
Erythema infectiosum	20	34	31	31	0.21
Exanthem subitum	103	108	91	114	0.77
Pertussis	11	9	16	15	0.10
Herpangina	15	33	33	100	0.68
Mumps	57	63	50	94	0.64
Cold with exanthems by Enterovirus	15	9	12	20	0.14
Mucocutaneous Lymphnode Syndrome		5		4	0.03
Influenza	48	39	37	33	0.11
Acute hemorrhagic conjunctivitis	2	4	2	2	0.05
Epidemic keratoconjunctivitis	21	29	16	19	0.50
Bacterial meningitis	2	2	1		
Aseptic meningitis			2	1	0.04
Mycoplasma pneumonia	6	2	1	3	0.13
Chlamydial pneumonia (excluding psittacosis)	3				

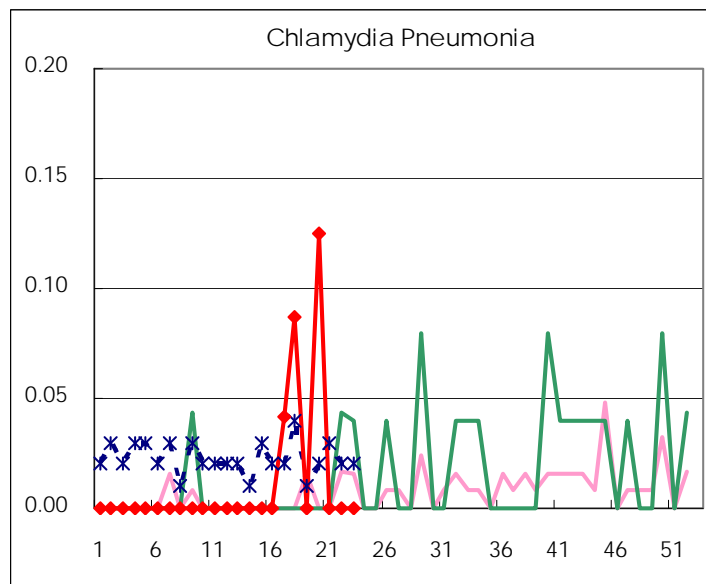
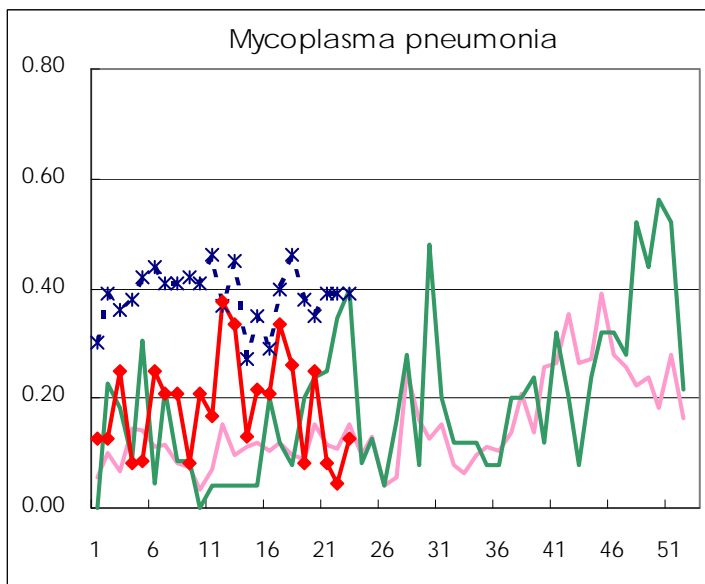
(Blank means 0.)

Disease Trend Graph (weekly reported cases per sentinel in comparison)









Number of sentinel facilities for weekly reporting		
Types of sentinels	Number of sentinels	Sentinels having reported
Pediatric	150	148
Influenza	290	287
Ophthalmic	39	38
Specially-designated	24	24

Tokyo Metropolitan Government
Infectious Disease Surveillance Center