
INFECTIOUS DISEASES WEEKLY REPORT

TOKYO iDWR

Tokyo Metropolitan Infectious Disease Surveillance Center

19 June 2008 / Number 24

Surveillance System in Tokyo, Japan

The infectious diseases which all physicians must report

All physicians must report to health centers the incidence of the diseases which are shown at page one. Health centers electronically report the individual cases to Tokyo Metropolitan Infectious Disease Surveillance Center.

The infectious diseases required to be reported by the sentinels

The numbers of patients who visit the sentinel clinics or hospitals during a week are reported to health centers in Tokyo. And they electronically report the numbers to Tokyo Metropolitan Infectious Disease Surveillance Center. We have about 400 sentinel clinics and hospitals in Tokyo.

1st Week is early January and 52nd Week is end of December.

Tokyo Metropolitan Institute of Public Health
Epidemiological Information Office

TEL:81-3-3363-3213 FAX:81-3-5332-7365

e-mail:idsc@tokyo-eiken.go.jp

URL:idsc.tokyo-eiken.go.jp/

Number of patients with the diseases which all physicians must report

Category	Diseases	Tokyo				Cum 2008	Japan	
		21th	22th	23th	24th		24th	Cum 2008
I	Ebola hemorrhagic fever							
	Crimean-Congo hemorrhagic fever							
	Smallpox							
	South American hemorrhagic fever							
	Plague							
	Marburg disease							
	Lassa fever							
II	Acute poliomyelitis							1
	Tuberculosis	88	86	62	45	1820	294	11095
	Diphtheria							
	Severe Acute Respiratory Syndrome(SARS)							
	Avian influenza virus infection (H5N1)							
III	Cholera					2	2	22
	Shigellosis		1			23	3	117
	Enterohemorrhagic Escherichia coli infection	2	1	5	4	36	87	697
	Typhoid fever		1			6		25
	Paratyphoid fever				1	4	1	16
IV	Hepatitis E				1	5	1	22
	West Nile fever							
	Hepatitis A	1		1	2	17	3	81
	Echinococcosis							6
	Yellow fever							
	Psittacosis							4
	Omsk hemorrhagic fever							
	Relapsing fever							
	Kyasanur forest disease							
	Q fever					1		2
	Rabies							
	Coccidioidomycosis							1
	Monkeypox							
	Hemorrhagic fever with renal syndrome							
	Western equine encephalitis							
	Tick-borne encephalitis							
	Anthrax							
	Scrub typhus(Tsutsugamushi disease)					4	2	98
	Dengue fever		1			8		26
	Eastern equine encephalitis							
	Avian influenza virus infection (without H5N1)							
	Nipah virus infection							
	Japanese spotted fever							13
	Japanese encephalitis							
	Epidemic typhus							
	Hantavirus pulmonary syndrome							
	Herpes B virus infection							
	Glanders							
	Brucellosis							
	Venezuelan equine encephalitis							
Hendra virus infection								
Botulism								
Malaria				1	7	1	16	
Tularemia							2	
Lyme disease						1	3	
Lyssavirus infection(excluding rabies)								
Rift valley fever								
Melioidosis								
Legionellosis	3	2			31	20	344	
Leptospirosis								
Rocky mountain spotted fever								

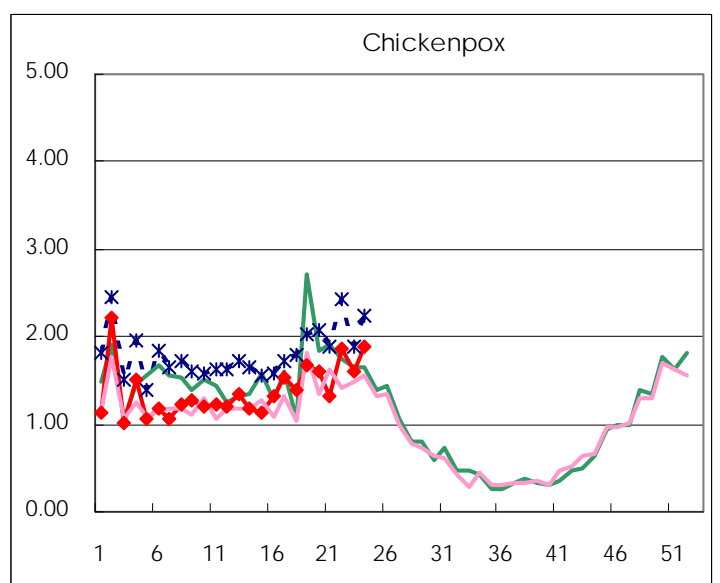
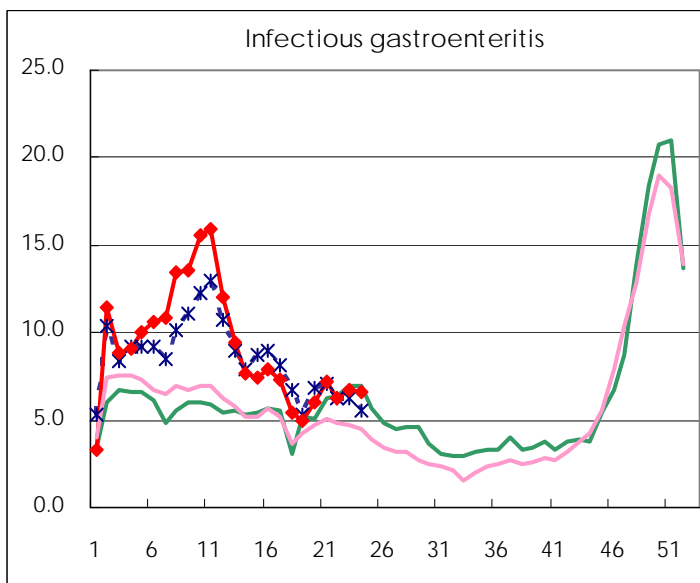
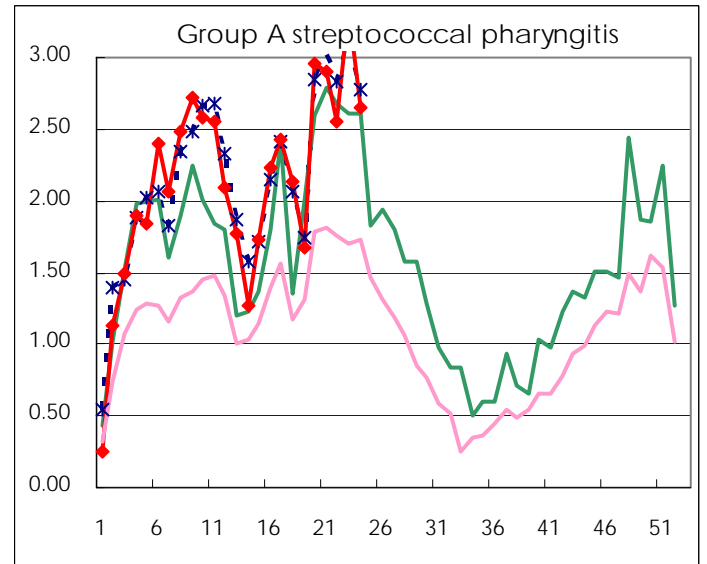
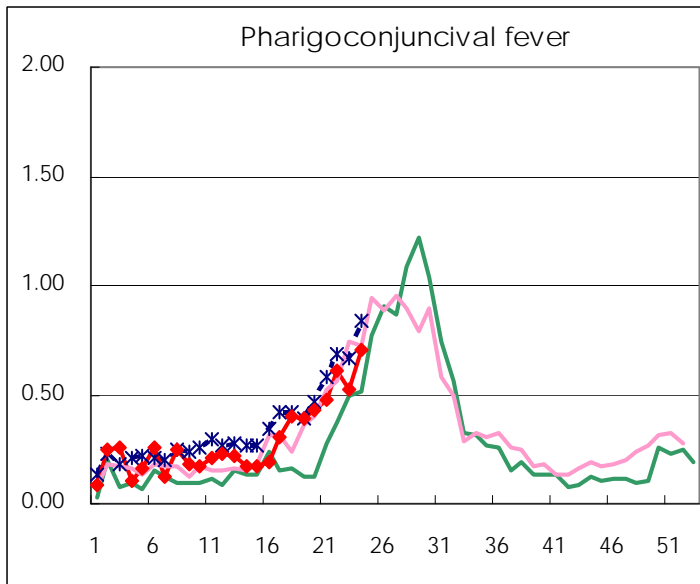
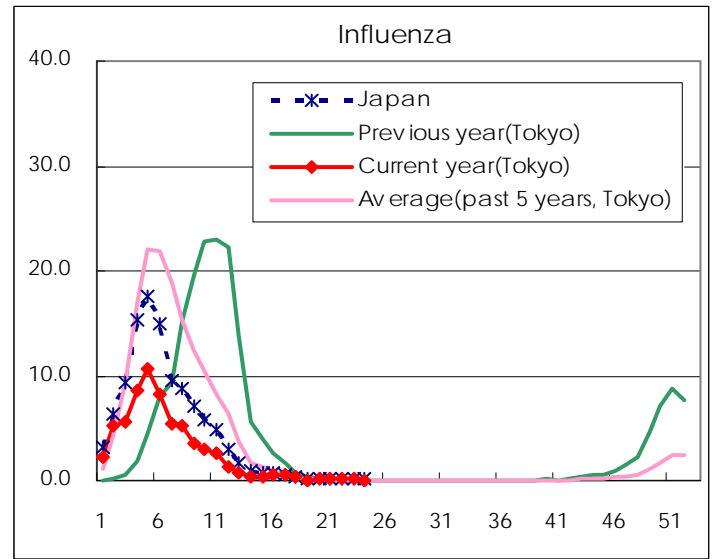
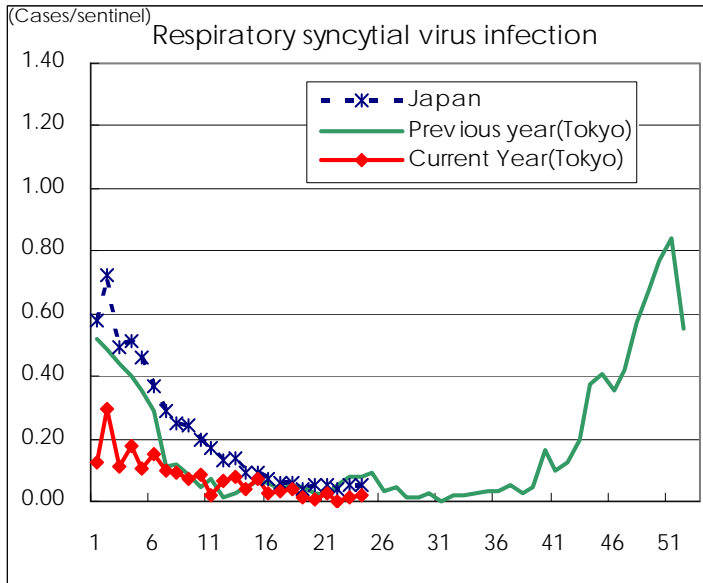
Category	Diseases	Tokyo				Japan		
		21th	22th	23th	24th	Cum 2008	24th	Cum 2008
V	Amebiasis	5	3	5	6	81	13	380
	Viral hepatitis(excluding hepatitis A and E)			1	2	14	3	99
	Acute encephalitis(excluding JE and WNE)					5		91
	Cryptosporidiosis					2		2
	Creutzfeldt-Jakob disease	3			1	9		69
	Severe invasive streptococcal infections(TSLS)	1		1		14	1	62
	Acquired immunodeficiency syndrome (AIDS)	17	7	7	11	252	19	643
	Giardiasis	1			1	12		34
	Meningococcal meningitis			1		2		8
	Congenital rubella syndrome							
	Syphilis	4	7	9	7	92	12	360
	Tetanus					2	3	38
	Vancomycin-resistant S. aureus infection							
	Vancomycin-resistant Enterococcus infection	1	1			8	3	34
	Rubella	1			1	25	9	210
Measles	34	22	26	29	1,008	206	9,392	

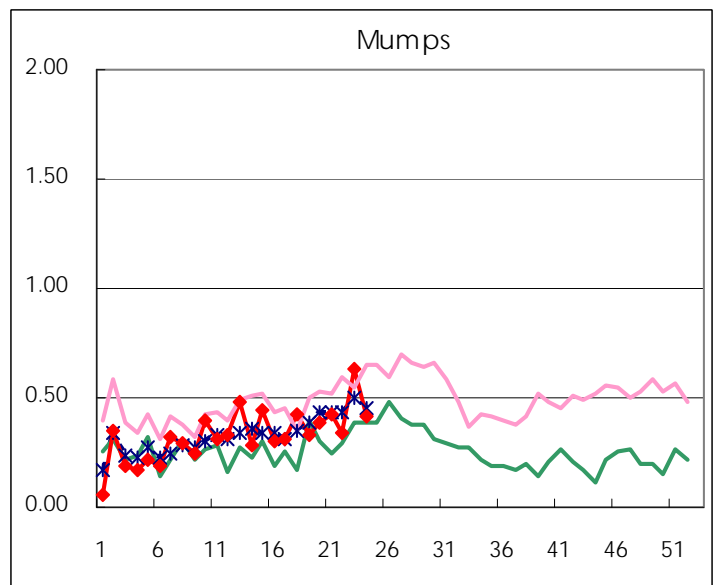
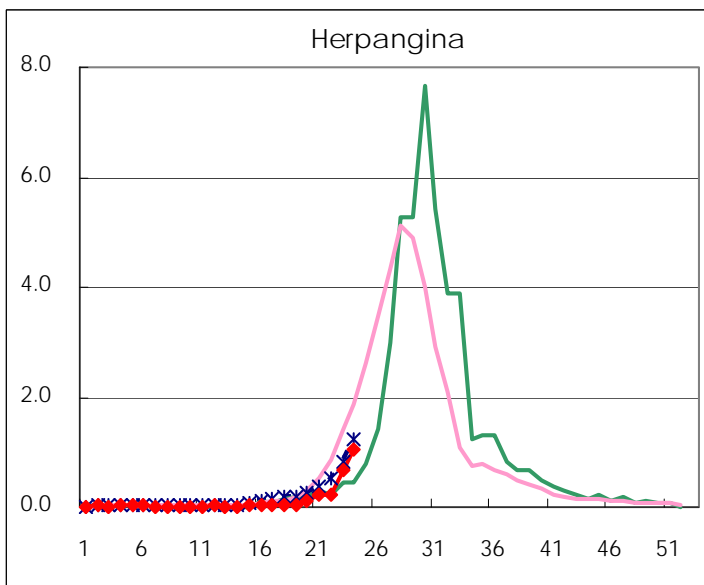
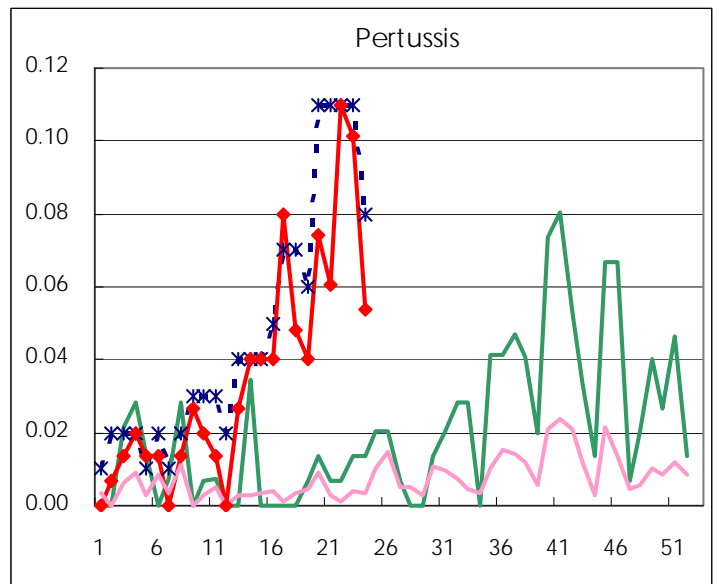
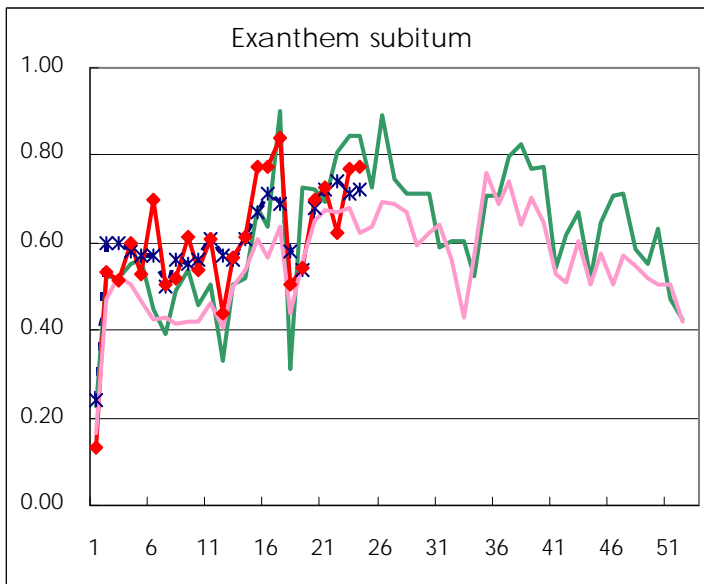
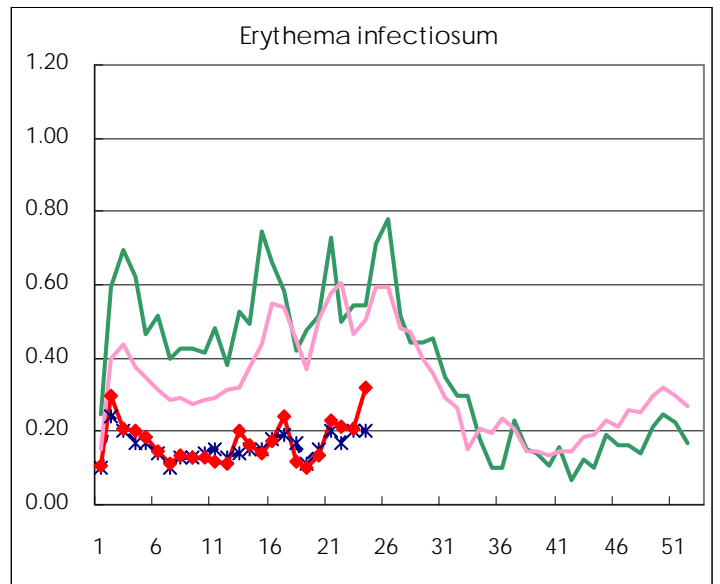
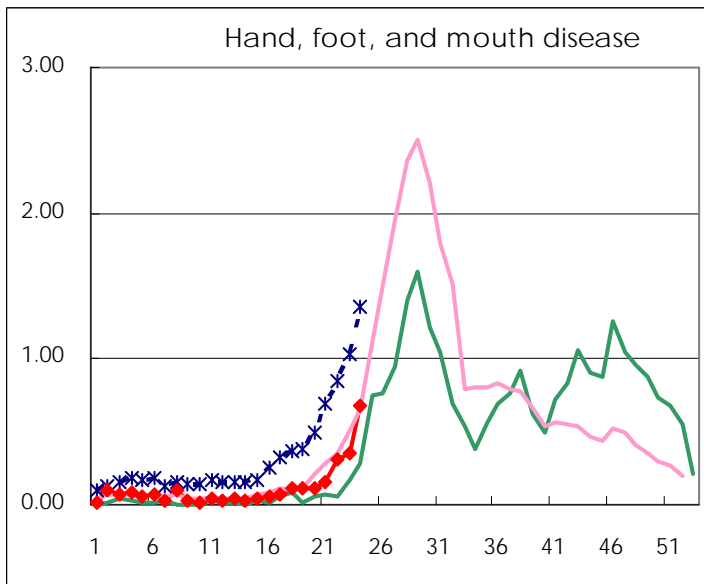
Number of patients with the diseases to be reported
by the designated clinics and hospitals

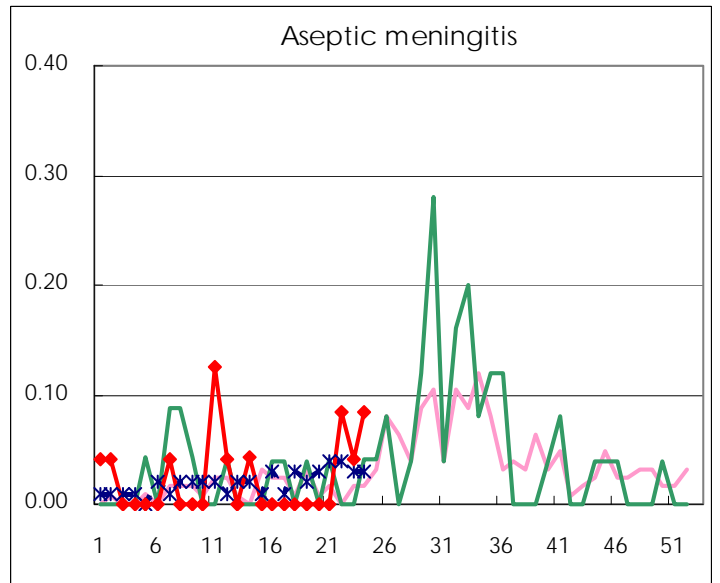
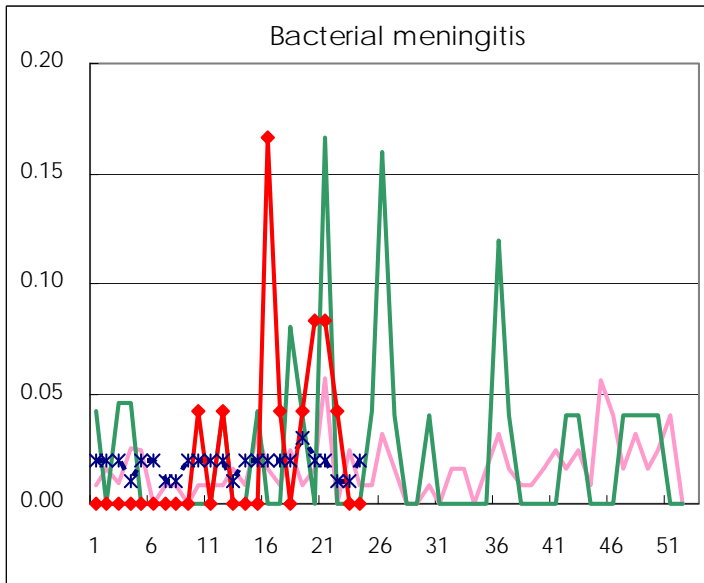
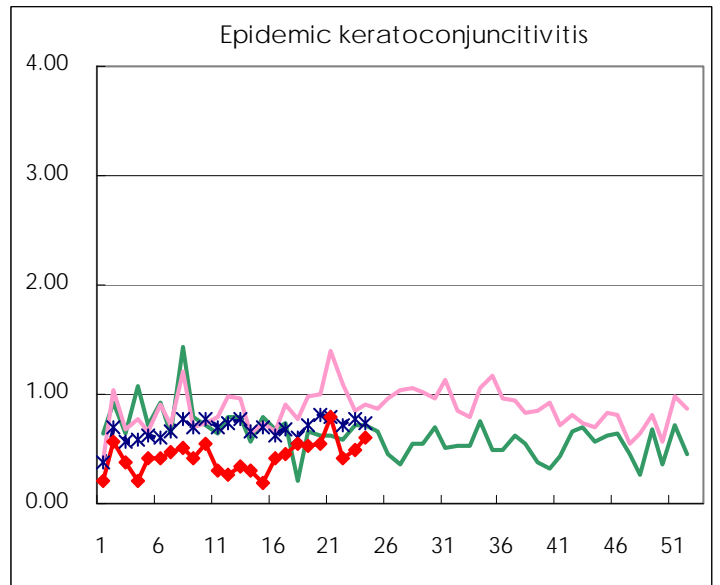
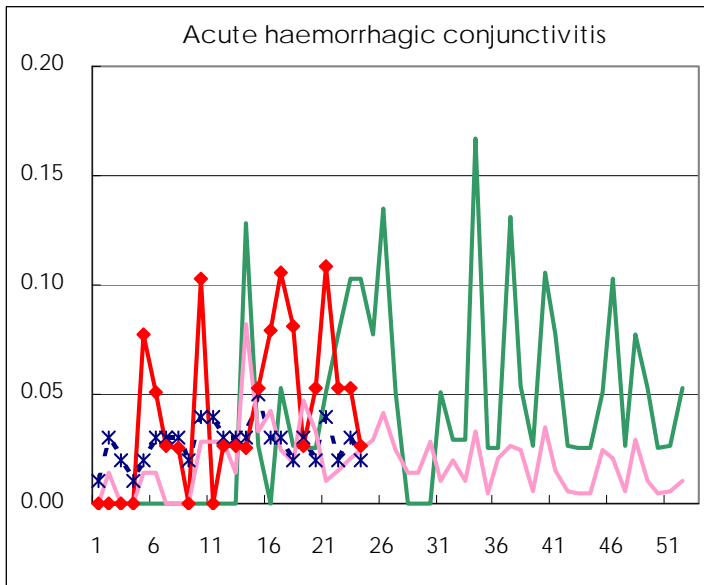
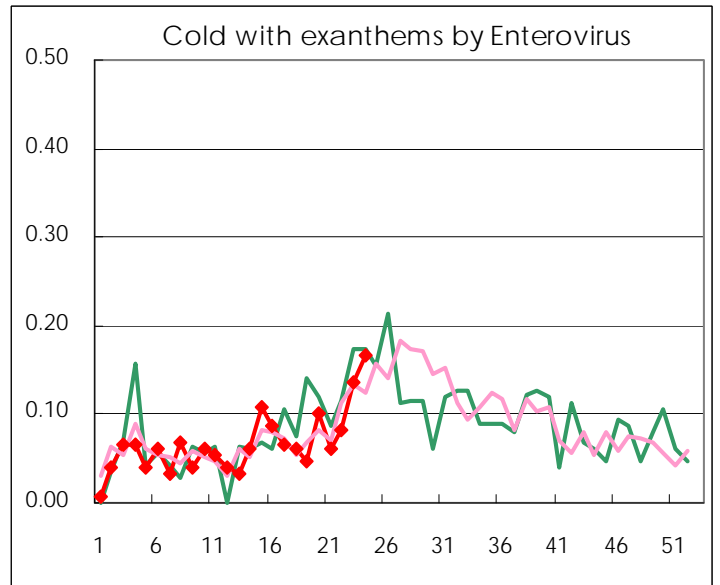
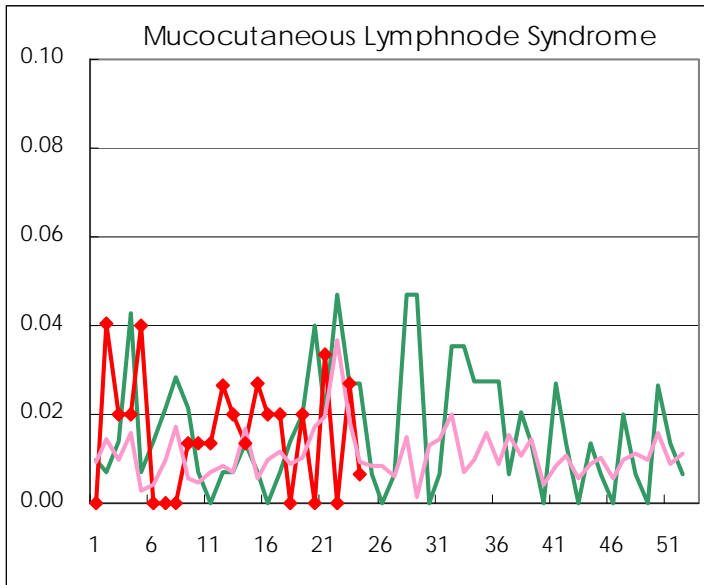
Diseases	2008				
	21th	22th	23th	24th	/sentinel
Respiratory syncytial virus infection	4	0	2	3	0.02
Pharyngoconjunctival fever	71	89	77	105	0.70
Group A streptococcal pharyngitis	433	373	494	395	2.65
Infectious gastroenteritis	1,075	905	992	981	6.58
Chickenpox	198	271	238	282	1.89
Hand, foot, and mouth disease	24	46	53	101	0.68
Erythema infectiosum	34	31	31	48	0.32
Exanthem subitum	108	91	114	115	0.77
Pertussis	9	16	15	8	0.05
Herpangina	33	33	100	157	1.05
Mumps	63	50	94	62	0.42
Cold with exanthems by Enterovirus	9	12	20	25	0.17
Mucocutaneous Lymphnode Syndrome	5	0	4	1	0.01
Influenza	39	37	33	22	0.08
Acute hemorrhagic conjunctivitis	4	2	2	1	0.03
Epidemic keratoconjunctivitis	29	16	19	23	0.61
Bacterial meningitis	2	1	0	0	0.00
Aseptic meningitis	0	2	1	2	0.08
Mycoplasma pneumonia	2	2	3	3	0.13
Chlamydial pneumonia (excluding psittacosis)	0	0	0	0	0.00

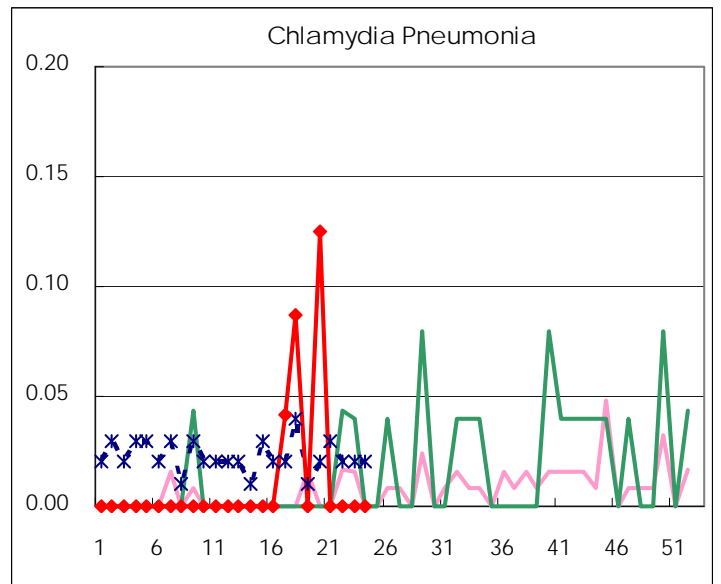
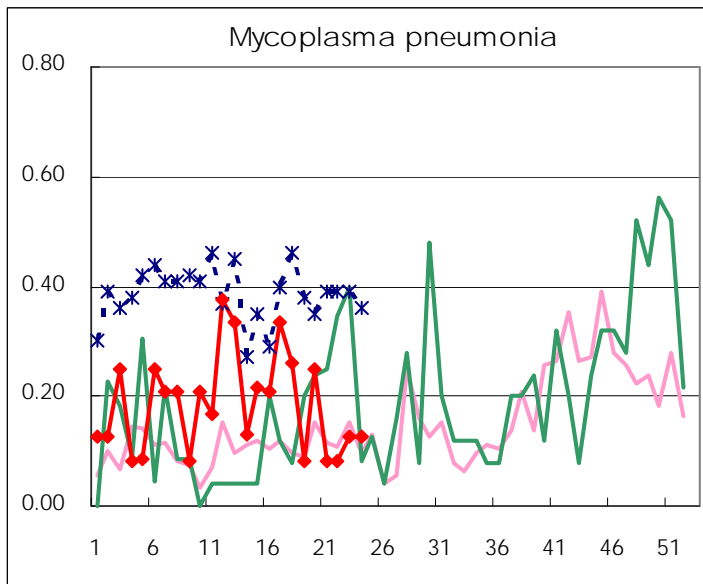
(Blank means 0.)

Disease Trend Graph (weekly reported cases per sentinel in comparison)









Number of sentinel facilities for weekly reporting		
Types of sentinels	Number of sentinels	Sentinels having reported
Pediatric	150	149
Influenza	290	287
Ophthalmic	39	38
Specially-designated	24	24

Tokyo Metropolitan Government
Infectious Disease Surveillance Center