
INFECTIOUS DISEASES WEEKLY REPORT

TOKYO IDWR

Tokyo Metropolitan Infectious Disease Surveillance Center

26 June 2008 / Number 25

Surveillance System in Tokyo, Japan

The infectious diseases which all physicians must report

All physicians must report to health centers the incidence of the diseases which are shown at page one. Health centers electronically report the individual cases to Tokyo Metropolitan Infectious Disease Surveillance Center.

The infectious diseases required to be reported by the sentinels

The numbers of patients who visit the sentinel clinics or hospitals during a week are reported to health centers in Tokyo. And they electronically report the numbers to Tokyo Metropolitan Infectious Disease Surveillance Center. We have about 400 sentinel clinics and hospitals in Tokyo.

1st Week is early January and 52nd Week is end of December.

Tokyo Metropolitan Institute of Public Health
Epidemiological Information Office

TEL:81-3-3363-3213 FAX:81-3-5332-7365

e-mail: idsc@tokyo-eiken.go.jp

URL: idsc.tokyo-eiken.go.jp/

Number of patients with the diseases which all physicians must report

Category	Diseases	Tokyo				Japan		
		22th	23th	24th	25th	Cum 2008	25th	Cum 2008
I	Ebola hemorrhagic fever					0	0	0
	Crimean-Congo hemorrhagic fever					0	0	0
	Smallpox					0	0	0
	South American hemorrhagic fever					0	0	0
	Plague					0	0	0
	Marburg disease					0	0	0
	Lassa fever					0	0	0
II	Acute poliomyelitis					0	0	1
	Tuberculosis	89	75	62	56	1920	367	11752
	Diphtheria					0	0	0
	Severe Acute Respiratory Syndrome(SARS)					0	0	0
	Avian influenza virus infection (H5N1)						0	0
III	Cholera					2	0	22
	Shigellosis	1			2	25	5	123
	Enterohemorrhagic Escherichia coli infection	1	5	4	8	44	132	843
	Typhoid fever	1				6	0	25
	Paratyphoid fever			1		4	0	16
IV	Hepatitis E			1		5	1	25
	West Nile fever					0	0	0
	Hepatitis A		1	2		17	2	84
	Echinococcosis					0	0	6
	Yellow fever					0	0	0
	Psittacosis					0	0	4
	Omsk hemorrhagic fever					0	0	0
	Relapsing fever					0	0	0
	Kyasanur forest disease					0	0	0
	Q fever					1	0	2
	Rabies					0	0	0
	Coccidioidomycosis					0	0	1
	Monkeypox					0	0	0
	Hemorrhagic fever with renal syndrome					0	0	0
	Western equine encephalitis					0	0	0
	Tick-borne encephalitis					0	0	0
	Anthrax					0	0	0
	Scrub typhus(Tsutsugamushi disease)				1	5	5	104
	Dengue fever	1			1	9	1	27
	Eastern equine encephalitis					0	0	0
	Avian influenza virus infection (without H5N1)					0	0	0
	Nipah virus infection					0	0	0
	Japanese spotted fever					0	0	14
	Japanese encephalitis					0	0	0
	Epidemic typhus					0	0	0
	Hantavirus pulmonary syndrome					0	0	0
	Herpes B virus infection					0	0	0
	Glanders					0	1	1
	Brucellosis					0	0	0
	Venezuelan equine encephalitis					0	0	0
	Hendra virus infection					0	0	0
	Botulism					0	0	0
Malaria			1	1	8	0	17	
Tularemia					0	0	2	
Lyme disease					0	0	3	
Lyssavirus infection(excluding rabies)					0	0	0	
Rift valley fever					0	0	0	
Melioidosis					0	0	0	
Legionellosis	2			3	34	23	367	
Leptospirosis					0	1	1	
Rocky mountain spotted fever					0	0	0	

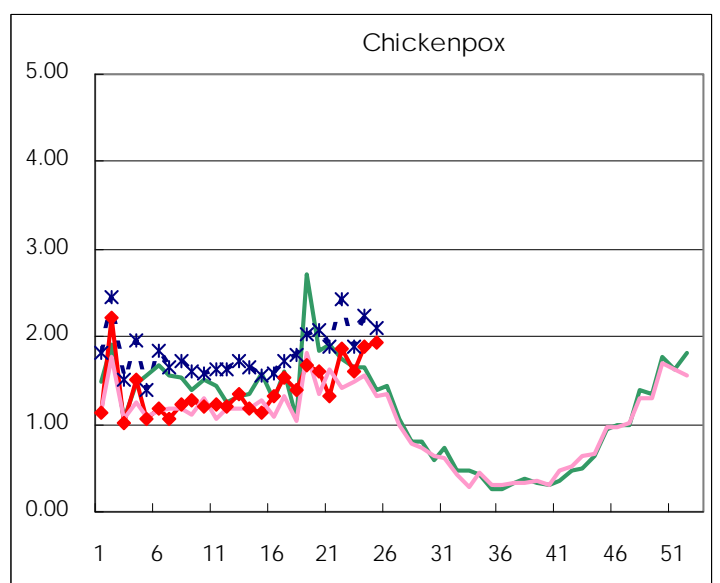
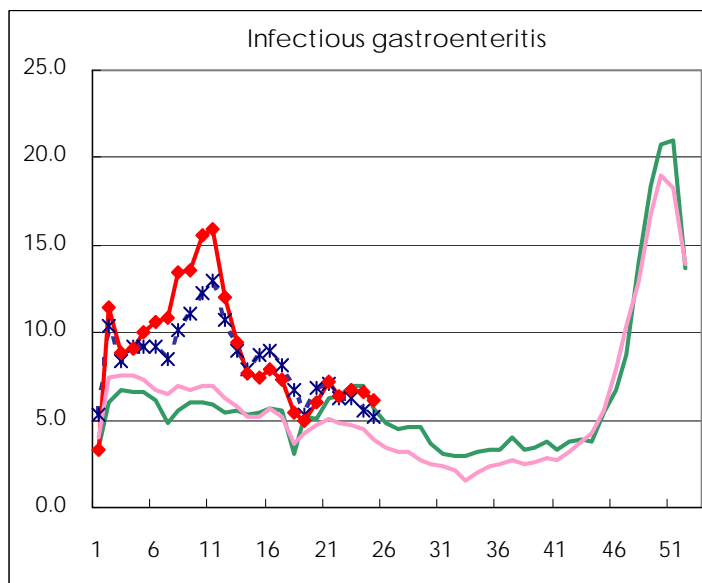
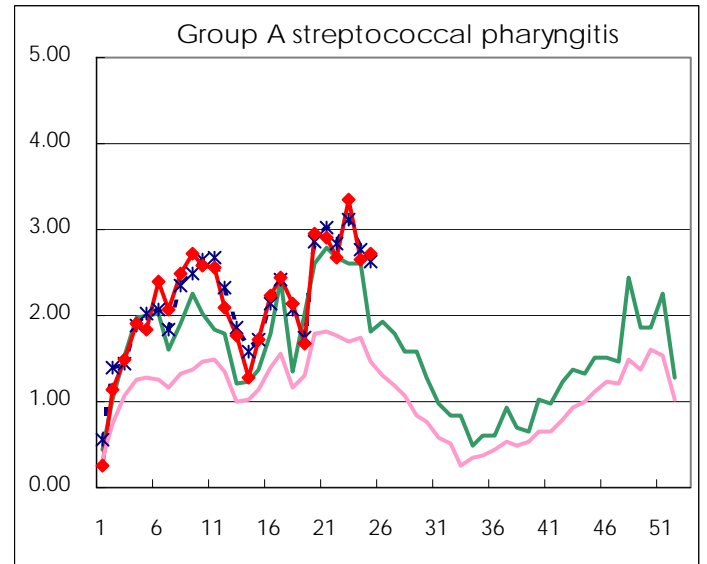
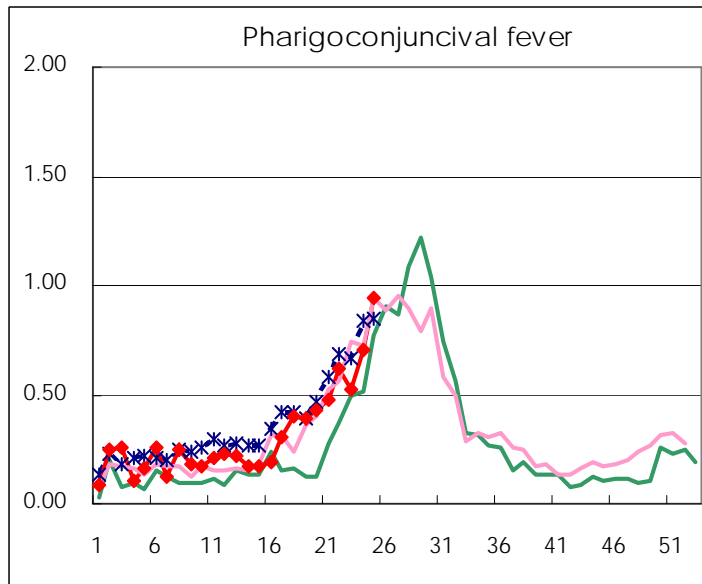
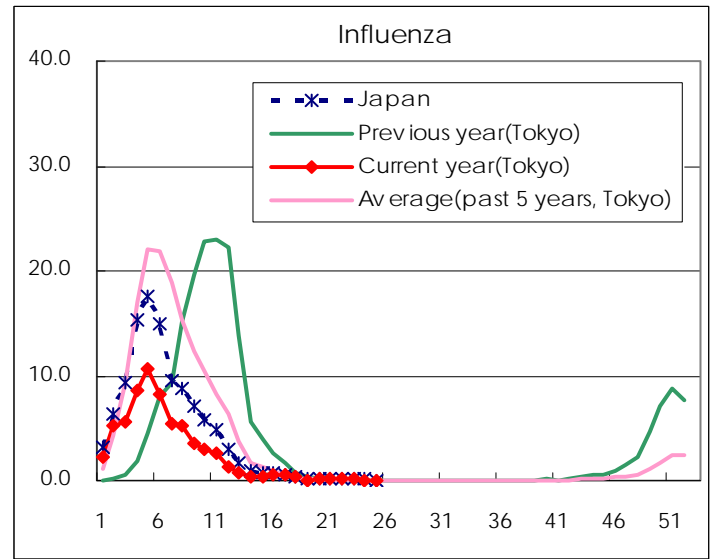
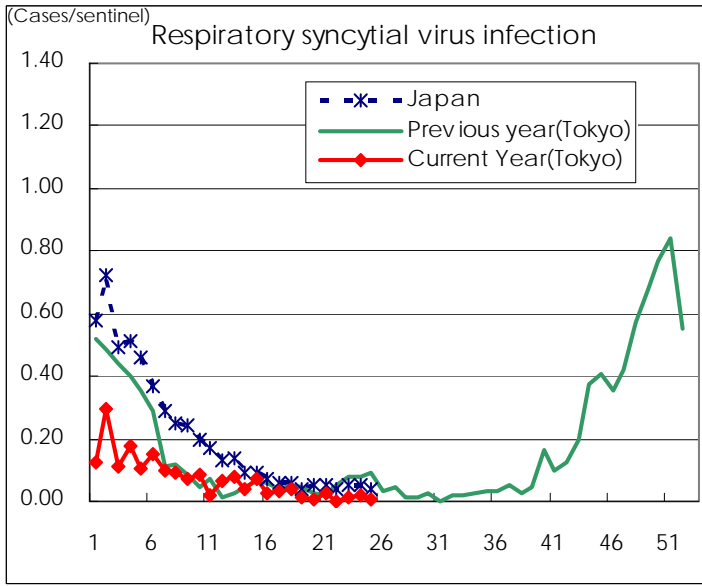
Category	Diseases	Tokyo					Japan	
		22th	23th	24th	25th	Cum 2008	25th	Cum 2008
V	Amebiasis	3	5	6	5	86	13	401
	Viral hepatitis(excluding hepatitis A and E)		1	2		14	1	102
	Acute encephalitis(excluding JE and WNE)				1	6	2	96
	Cryptosporidiosis					2	0	2
	Creutzfeldt-Jakob disease			1		9	0	72
	Severe invasive streptococcal infections(TSLS)		1			14	1	64
	Acquired immunodeficiency syndrome (AIDS)	7	7	11	7	259	18	678
	Giardiasis			1		12	1	35
	Meningococcal meningitis		1			2	0	9
	Congenital rubella syndrome					0	0	0
	Syphilis	7	9	7	6	98	11	380
	Tetanus					2	5	44
	Vancomycin-resistant S. aureus infection					0	0	0
	Vancomycin-resistant Enterococcus infection	1				8	2	36
	Rubella			1		25	3	216
Measles	22	26	30	15	1,024	176	9,631	

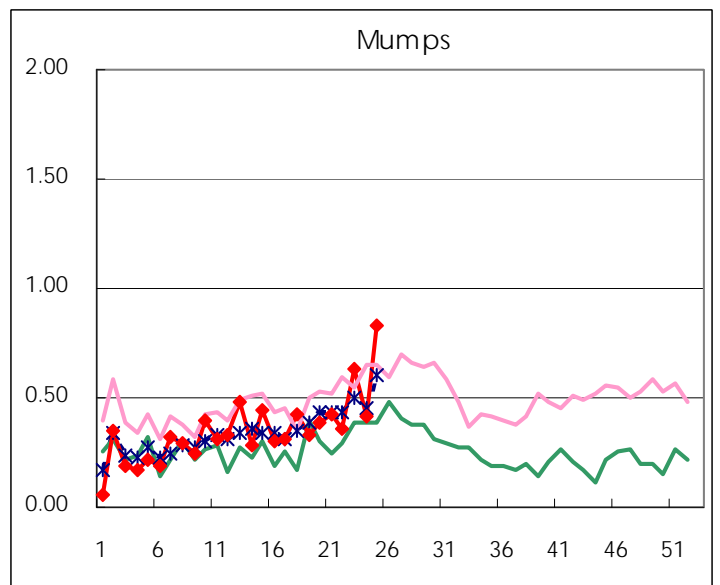
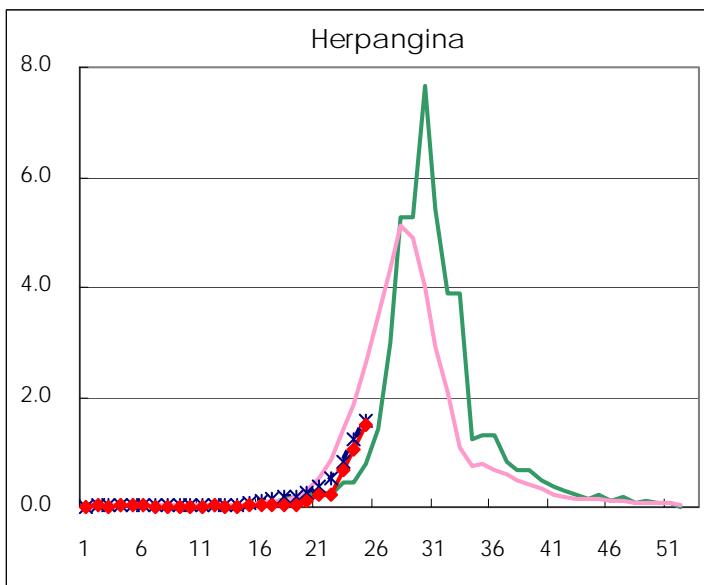
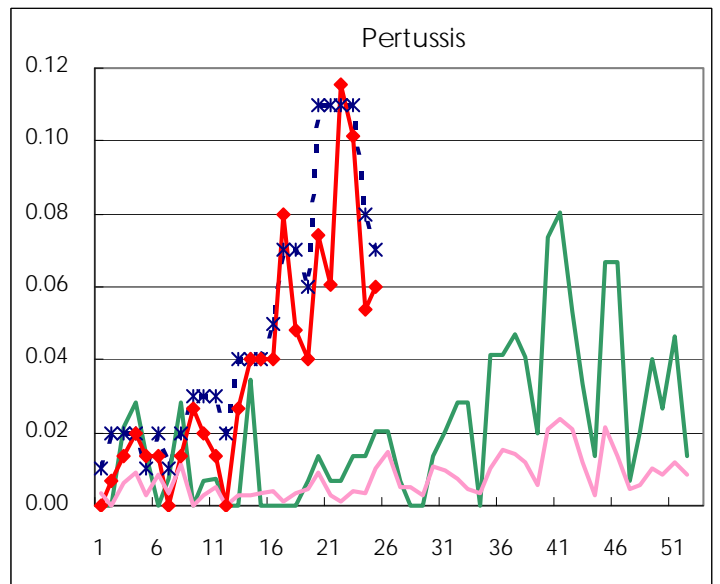
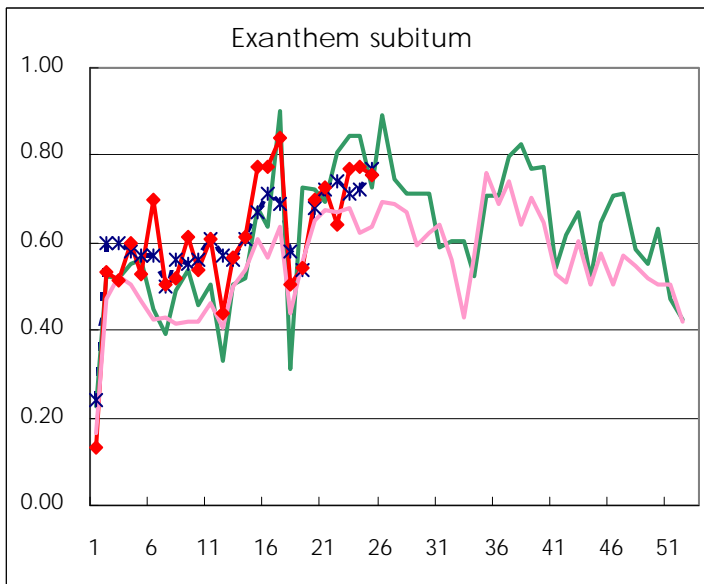
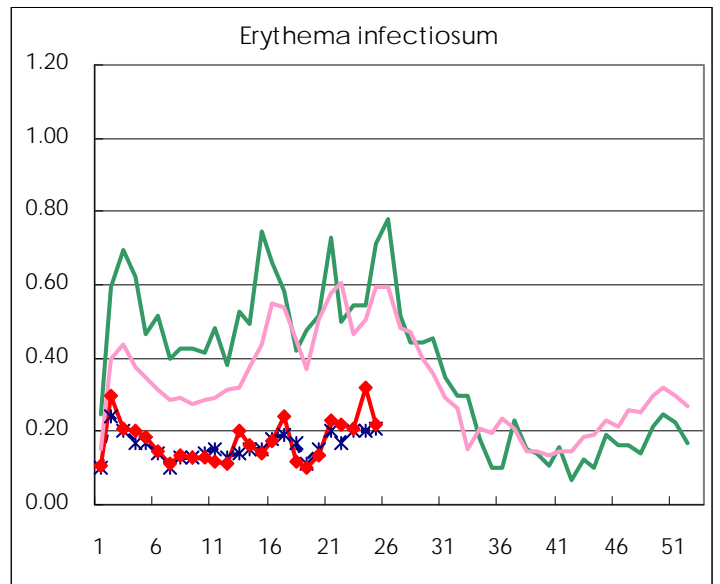
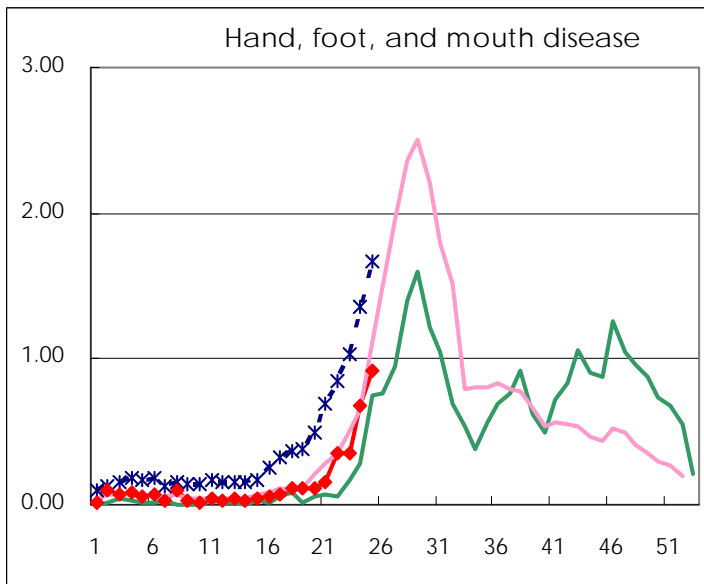
Number of patients with the diseases to be reported
by the designated clinics and hospitals

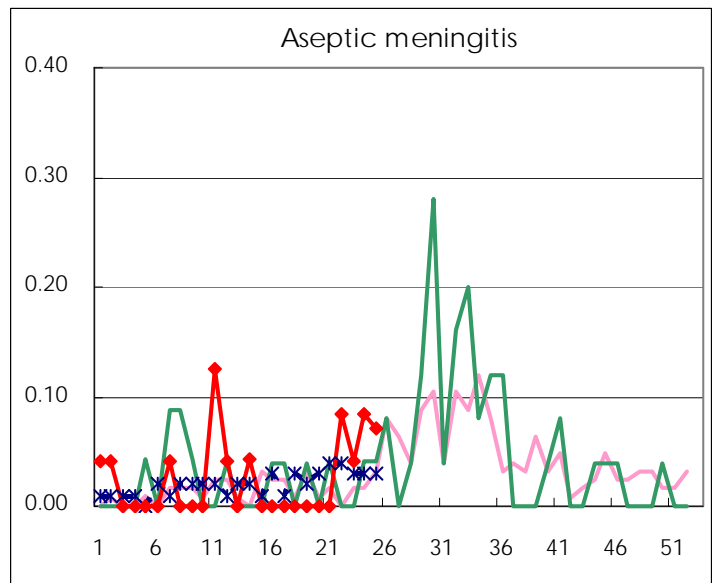
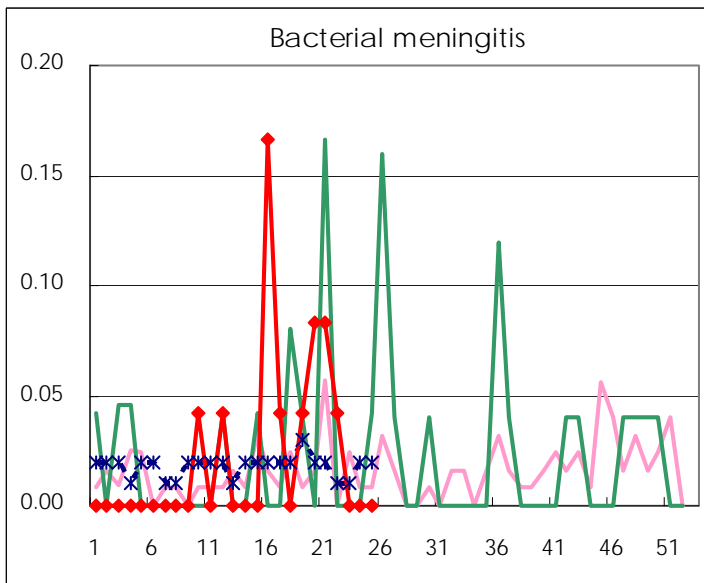
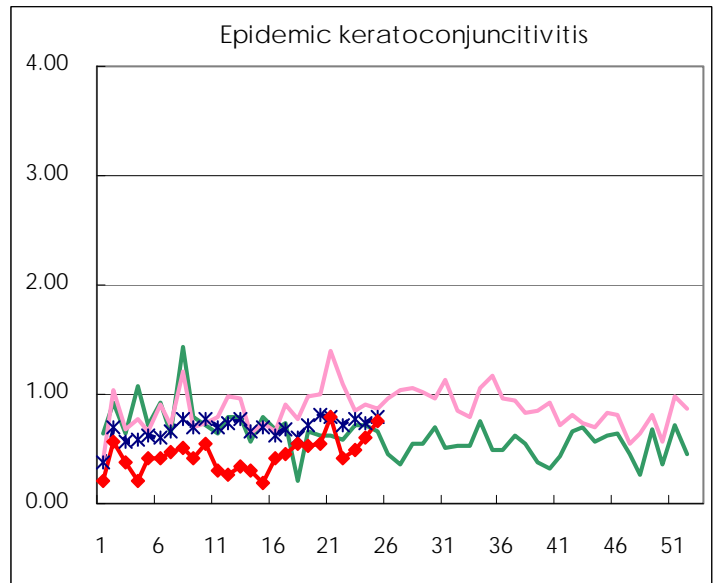
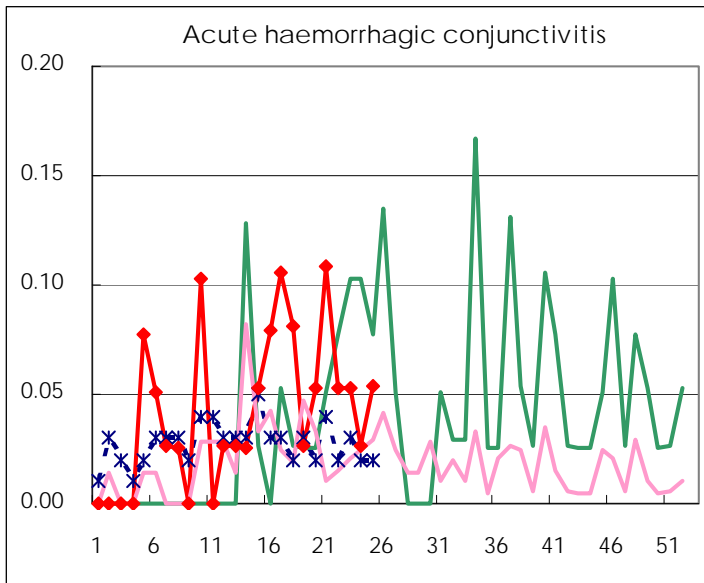
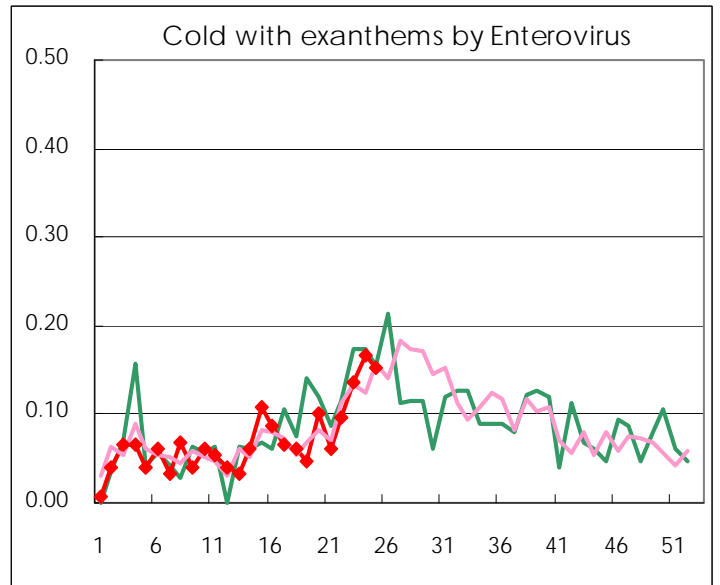
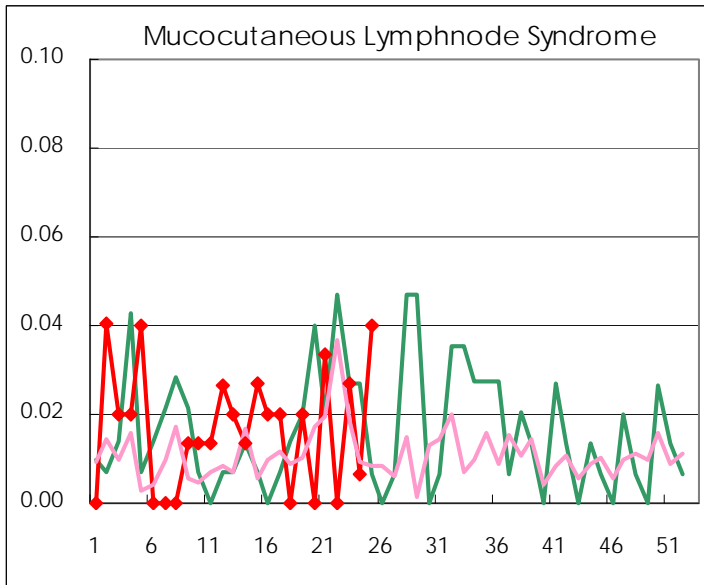
Diseases	2008				
	22th	23th	24th	25th	/sentinel
Respiratory syncytial virus infection	0	2	3	1	0.01
Pharyngoconjunctival fever	91	77	105	141	0.94
Group A streptococcal pharyngitis	394	494	395	407	2.71
Infectious gastroenteritis	934	992	981	927	6.18
Chickenpox	275	238	282	291	1.94
Hand, foot, and mouth disease	51	53	101	137	0.91
Erythema infectiosum	32	31	48	33	0.22
Exanthem subitum	94	114	115	113	0.75
Pertussis	17	15	8	9	0.06
Herpangina	34	100	157	225	1.50
Mumps	53	94	62	125	0.83
Cold with exanthems by Enterovirus	14	20	25	23	0.15
Mucocutaneous Lymphnode Syndrome	0	4	1	6	0.04
Influenza	37	33	22	11	0.04
Acute hemorrhagic conjunctivitis	2	2	1	2	0.05
Epidemic keratoconjunctivitis	16	19	23	28	0.76
Bacterial meningitis	1	0	0	0	0.00
Aseptic meningitis	2	1	2	1	0.07
Mycoplasma pneumonia	2	3	3	2	0.14
Chlamydial pneumonia (excluding psittacosis)	0	0	0	0	0.00

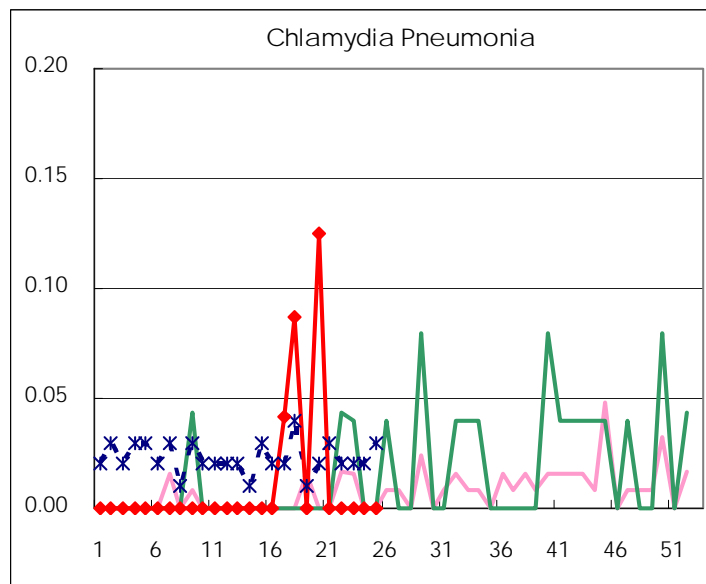
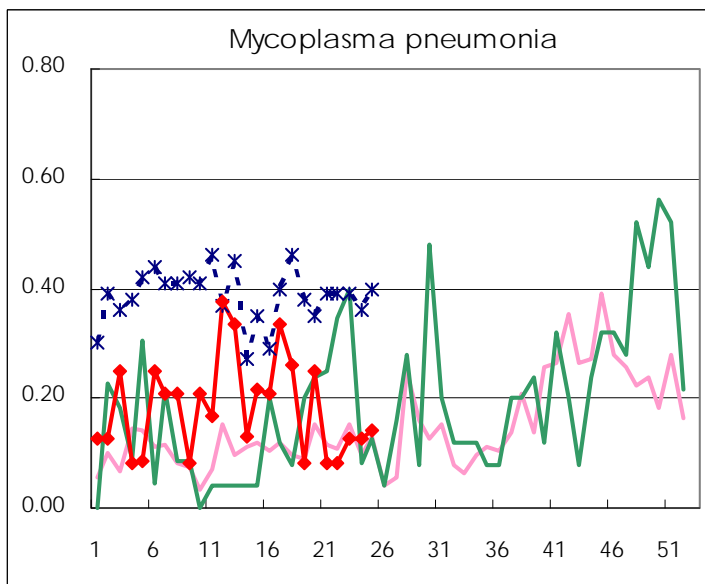
(Blank means 0.)

Disease Trend Graph (weekly reported cases per sentinel in comparison)









Number of sentinel facilities for weekly reporting		
Types of sentinels	Number of sentinels	Sentinels having reported
Pediatric	150	150
Influenza	290	289
Ophthalmic	39	37
Specially-designated	24	14

Tokyo Metropolitan Government
Infectious Disease Surveillance Center