
INFECTIOUS DISEASES WEEKLY REPORT

TOKYO IDWR

Tokyo Metropolitan Infectious Disease Surveillance Center

3 July 2008 / Number 26

Surveillance System in Tokyo, Japan

The infectious diseases which all physicians must report

All physicians must report to health centers the incidence of the diseases which are shown at page one. Health centers electronically report the individual cases to Tokyo Metropolitan Infectious Disease Surveillance Center.

The infectious diseases required to be reported by the sentinels

The numbers of patients who visit the sentinel clinics or hospitals during a week are reported to health centers in Tokyo. And they electronically report the numbers to Tokyo Metropolitan Infectious Disease Surveillance Center. We have about 400 sentinel clinics and hospitals in Tokyo.

1st Week is early January and 52nd Week is end of December.

Tokyo Metropolitan Institute of Public Health
Epidemiological Information Office

TEL:81-3-3363-3213 FAX:81-3-5332-7365

e-mail:idsc@tokyo-eiken.go.jp

URL:idsc.tokyo-eiken.go.jp/

Number of patients with the diseases which all physicians must report

| Category | Diseases | Tokyo | | | | Cum 2008 | Japan | |
|--|--|-------|------|------|------|-------------|-------|-------------|
| | | 23th | 24th | 25th | 26th | | 26th | Cum 2008 |
| I | Ebola hemorrhagic fever | | | | | | | |
| | Crimean-Congo hemorrhagic fever | | | | | | | |
| | Smallpox | | | | | | | |
| | South American hemorrhagic fever | | | | | | | |
| | Plague | | | | | | | |
| | Marburg disease | | | | | | | |
| | Lassa fever | | | | | | | |
| II | Acute poliomyelitis | | | | | | | 1 |
| | Tuberculosis | 82 | 68 | 64 | 65 | 2008 | 324 | 12352 |
| | Diphtheria | | | | | | | |
| | Severe Acute Respiratory Syndrome(SARS) | | | | | | | |
| | Avian influenza virus infection (H5N1) | | | | | | | |
| III | Cholera | | | | 1 | 3 | 1 | 23 |
| | Shigellosis | | | 2 | | 25 | 3 | 127 |
| | Enterohemorrhagic Escherichia coli infection | 5 | 4 | 8 | 10 | 54 | 94 | 946 |
| | Typhoid fever | | | | | 6 | | 25 |
| | Paratyphoid fever | | 1 | | | 4 | | 16 |
| IV | Hepatitis E | | 1 | | | 5 | 2 | 27 |
| | West Nile fever | | | | | | | |
| | Hepatitis A | 1 | 2 | | | 17 | 4 | 90 |
| | Echinococcosis | | | | | | | 6 |
| | Yellow fever | | | | | | | |
| | Psittacosis | | | | | | | 4 |
| | Omsk hemorrhagic fever | | | | | | | |
| | Relapsing fever | | | | | | | |
| | Kyasanur forest disease | | | | | | | |
| | Q fever | | | | | 1 | | 2 |
| | Rabies | | | | | | | |
| | Coccidioidomycosis | | | | | | | 1 |
| | Monkeypox | | | | | | | |
| | Hemorrhagic fever with renal syndrome | | | | | | | |
| | Western equine encephalitis | | | | | | | |
| | Tick-borne encephalitis | | | | | | | |
| | Anthrax | | | | | | | |
| | Scrub typhus(Tsutsugamushi disease) | | | 1 | | 5 | 2 | 115 |
| | Dengue fever | | | 1 | | 9 | 1 | 28 |
| | Eastern equine encephalitis | | | | | | | |
| | Avian influenza virus infection (without H5N1) | | | | | | | |
| | Nipah virus infection | | | | | | | |
| | Japanese spotted fever | | | | | | 2 | 16 |
| | Japanese encephalitis | | | | | | | |
| | Epidemic typhus | | | | | | | |
| | Hantavirus pulmonary syndrome | | | | | | | |
| | Herpes B virus infection | | | | | | | |
| | Glanders | | | | | | | 1 |
| | Brucellosis | | | | | | | |
| | Venezuelan equine encephalitis | | | | | | | |
| Hendra virus infection | | | | | | | | |
| Botulism | | | | | | | | |
| Malaria | | 1 | 1 | 1 | 9 | | 19 | |
| Tularemia | | | | | | | 2 | |
| Lyme disease | | | | | | | 3 | |
| Lyssavirus infection(excluding rabies) | | | | | | | | |
| Rift valley fever | | | | | | | | |
| Melioidosis | | | | | | | | |
| Legionellosis | | | 3 | 3 | 37 | 10 | 386 | |
| Leptospirosis | | | | | | | 1 | |
| Rocky mountain spotted fever | | | | | | | | |

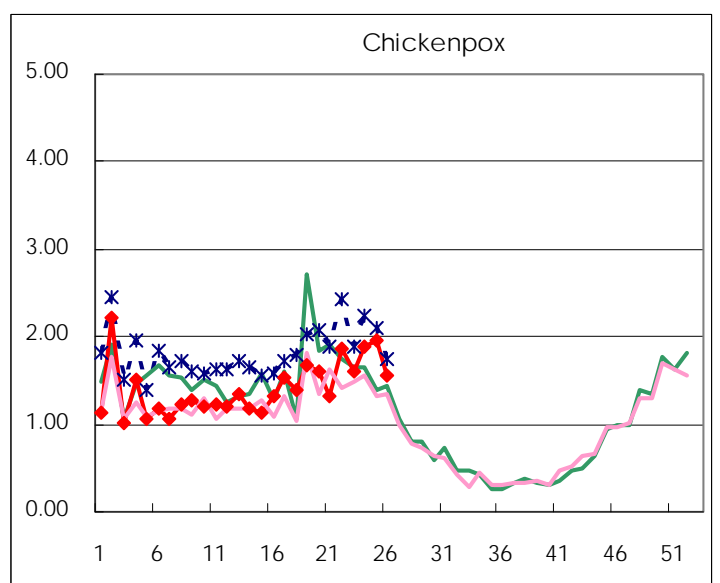
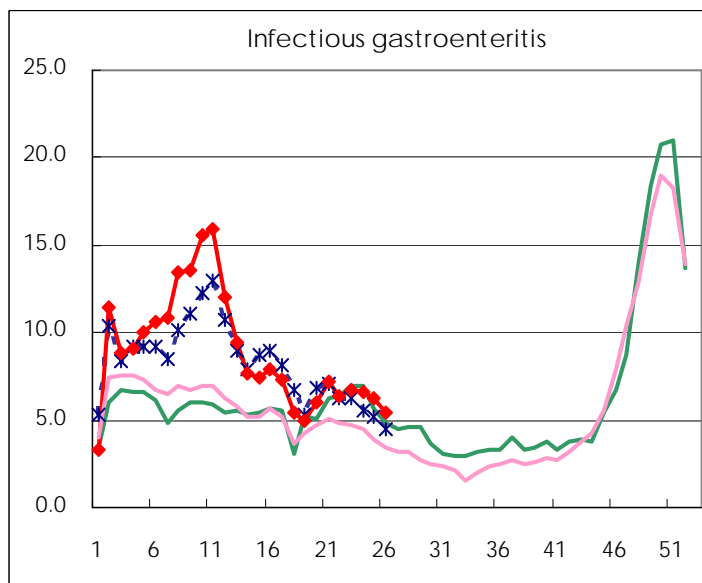
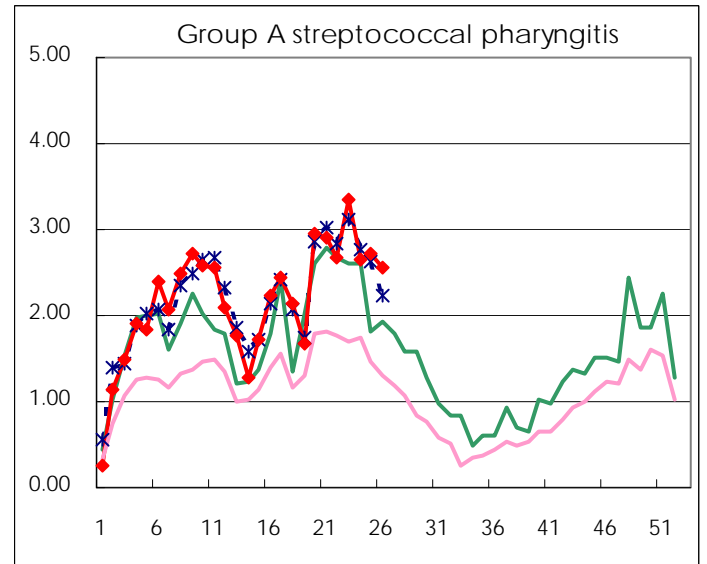
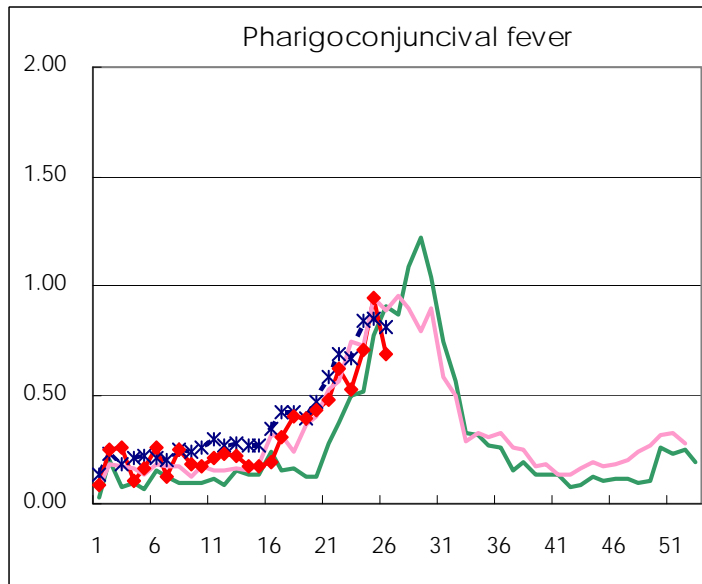
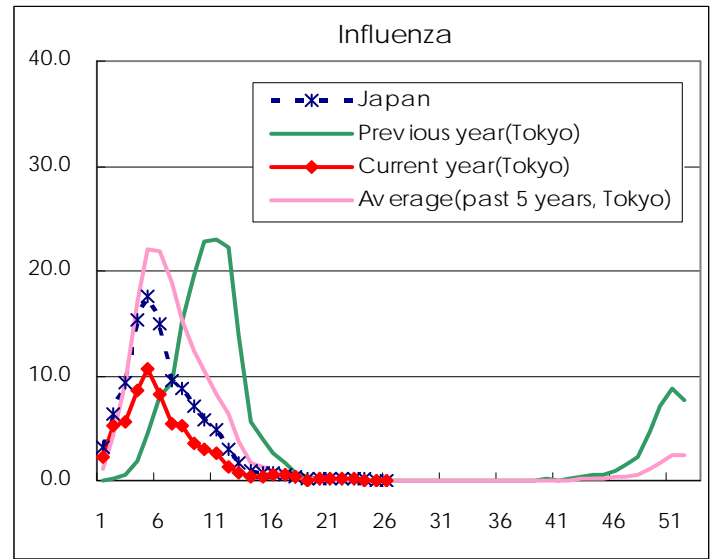
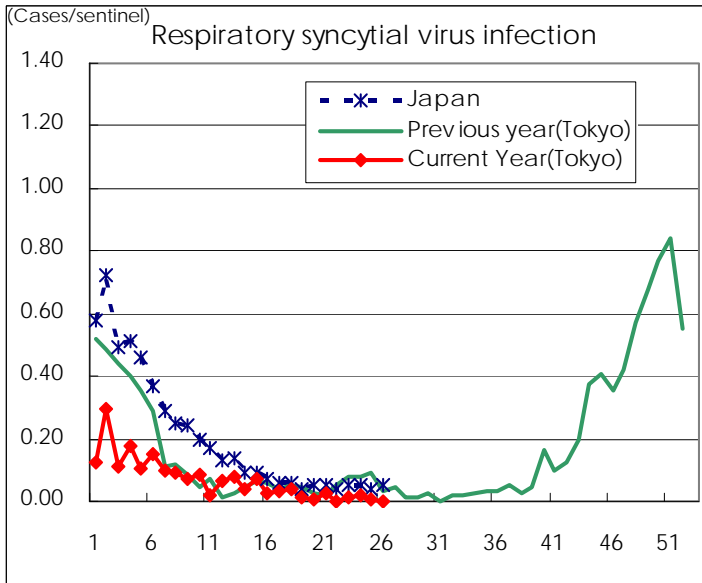
| Category | Diseases | Tokyo | | | | Japan | | |
|----------|--|-------|------|------|-------|----------|-------|----------|
| | | 23th | 24th | 25th | 26th | Cum 2008 | 26th | Cum 2008 |
| V | Amebiasis | 5 | 6 | 5 | 4 | 90 | 16 | 419 |
| | Viral hepatitis(excluding hepatitis A and E) | 1 | 2 | | 1 | 15 | 1 | 107 |
| | Acute encephalitis(excluding JE and WNE) | | | 1 | | 6 | 2 | 99 |
| | Cryptosporidiosis | | | | | 2 | | 3 |
| | Creutzfeldt-Jakob disease | | 1 | | | 9 | 1 | 74 |
| | Severe invasive streptococcal infections(TSLS) | 1 | | | | 14 | | 64 |
| | Acquired immunodeficiency syndrome (AIDS) | 7 | 11 | 7 | 13 | 272 | 17 | 708 |
| | Giardiasis | | 1 | | 1 | 13 | | 36 |
| | Meningococcal meningitis | 1 | | | | 2 | | 9 |
| | Congenital rubella syndrome | | | | | | | |
| | Syphilis | 9 | 7 | 7 | | 99 | 6 | 392 |
| | Tetanus | | | | | 2 | 2 | 48 |
| | Vancomycin-resistant S. aureus infection | | | | | | | |
| | Vancomycin-resistant Enterococcus infection | | | | | 8 | 2 | 38 |
| | Rubella | | 1 | | 2 | 27 | 8 | 227 |
| Measles | 26 | 30 | 16 | 18 | 1,043 | 147 | 9,860 | |
| | | | | | | | | |

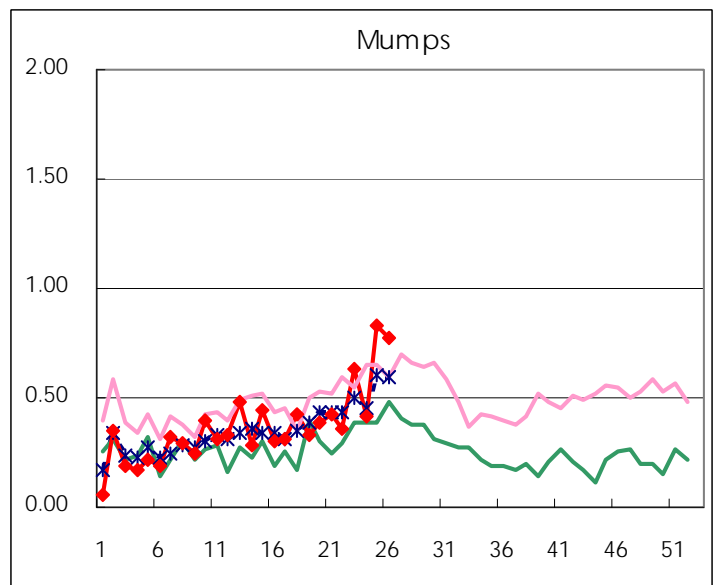
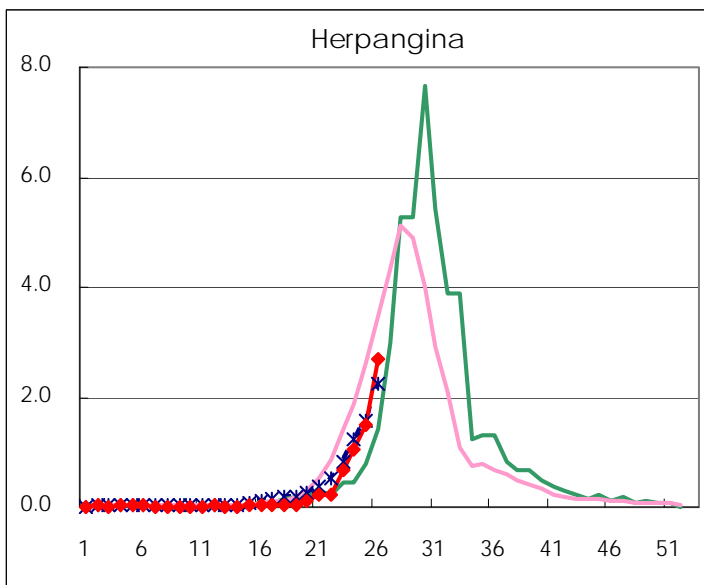
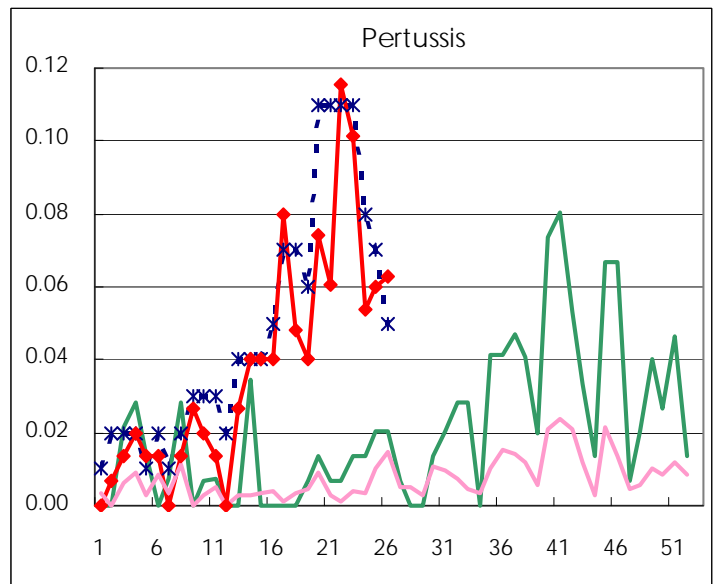
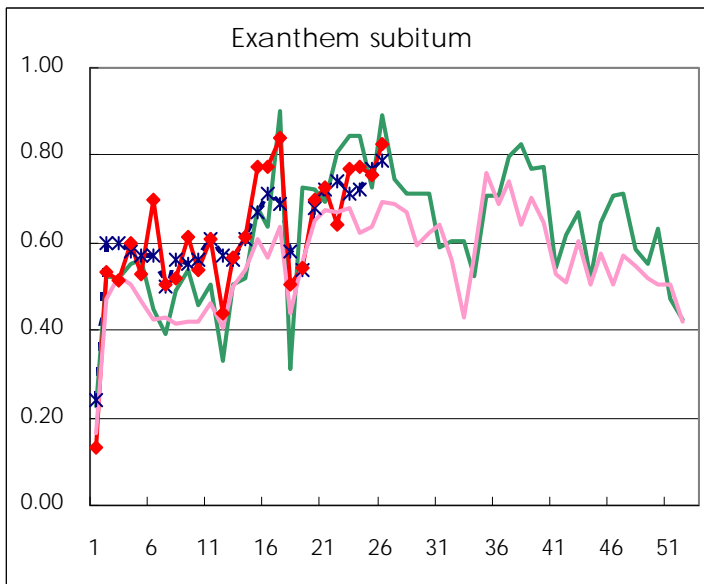
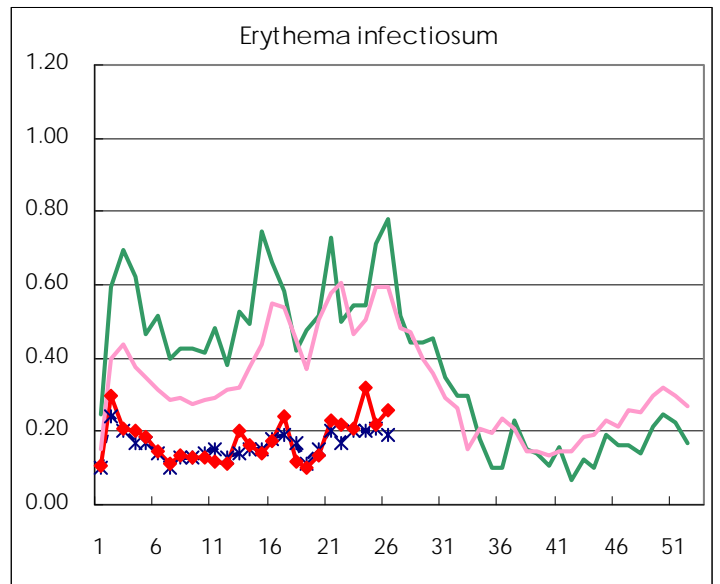
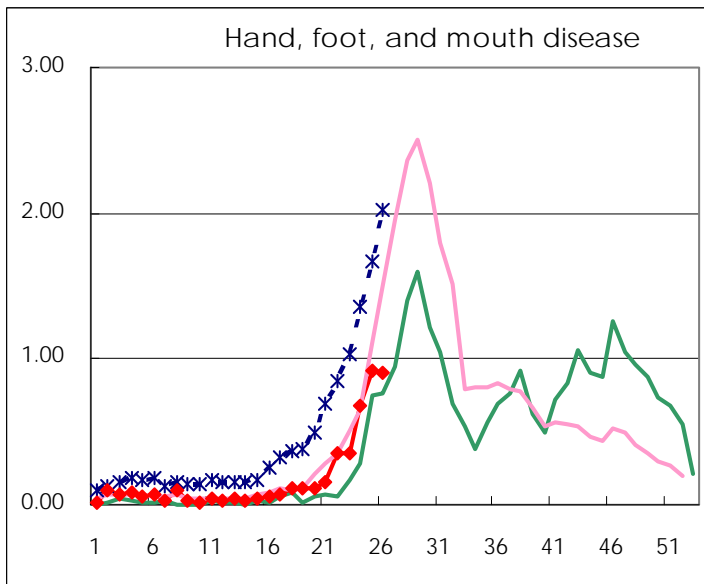
Number of patients with the diseases to be reported
by the designated clinics and hospitals

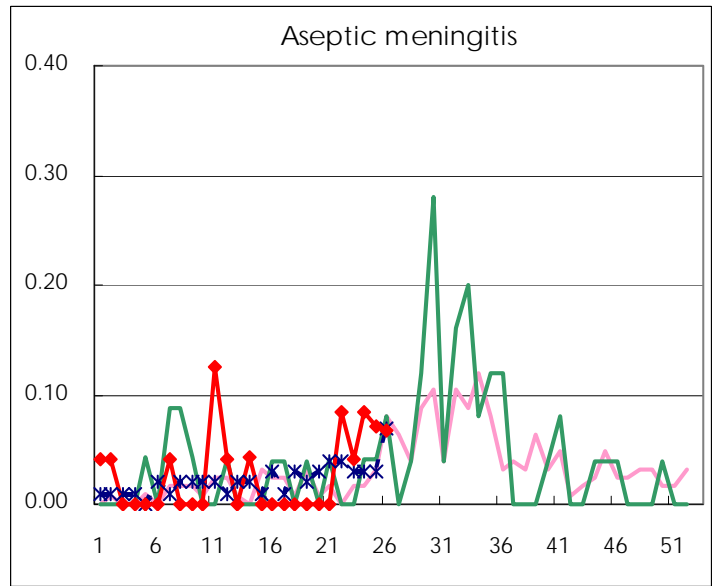
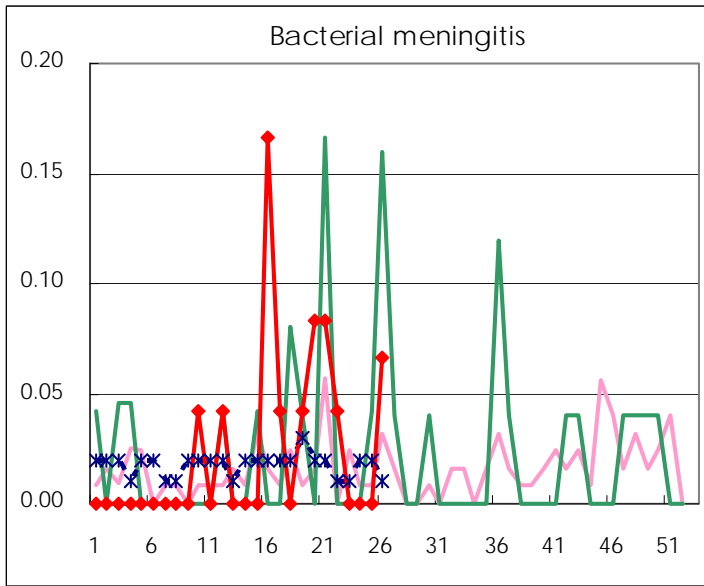
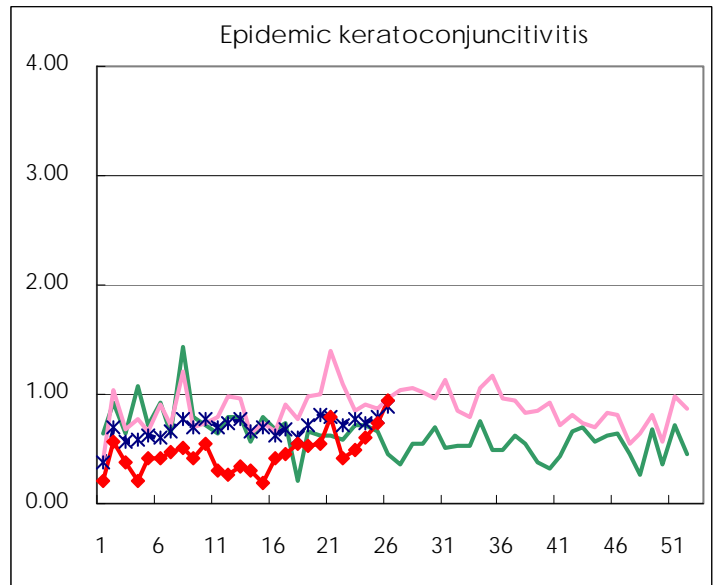
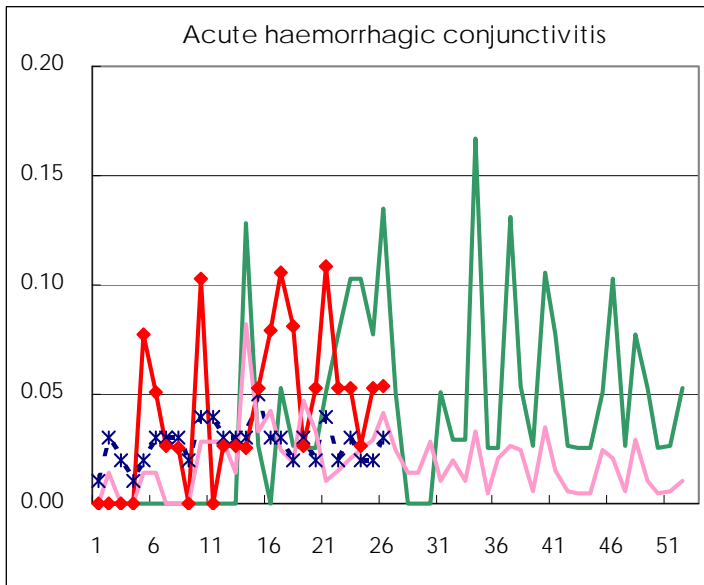
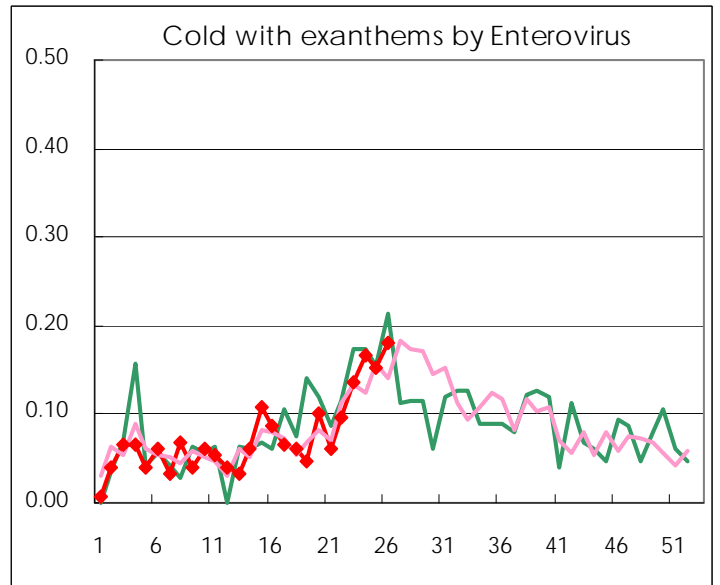
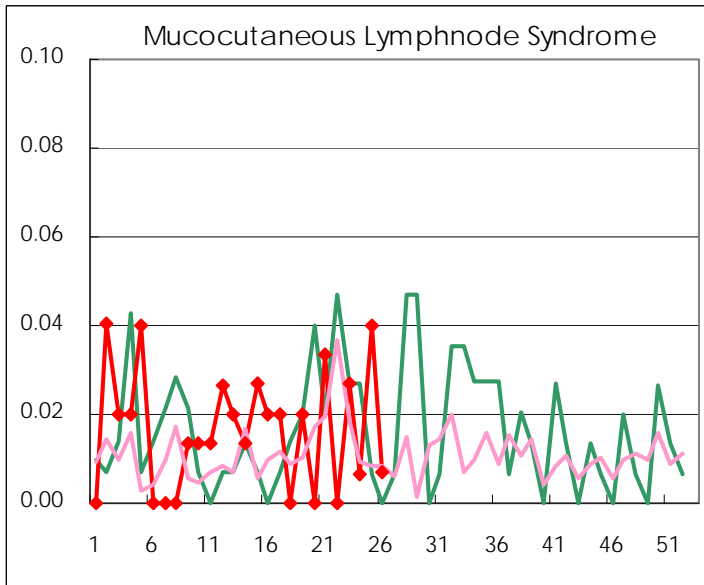
| Diseases | 2008 | | | | |
|---|------|------|------|------|-----------|
| | 23th | 24th | 25th | 26th | /sentinel |
| Respiratory syncytial virus infection | 2 | 3 | 1 | 0 | 0.00 |
| Pharyngoconjunctival fever | 77 | 105 | 142 | 98 | 0.69 |
| Group A streptococcal pharyngitis | 494 | 395 | 408 | 366 | 2.56 |
| Infectious gastroenteritis | 992 | 981 | 932 | 780 | 5.45 |
| Chickenpox | 238 | 282 | 295 | 224 | 1.57 |
| Hand, foot, and mouth disease | 53 | 101 | 139 | 130 | 0.91 |
| Erythema infectiosum | 31 | 48 | 33 | 37 | 0.26 |
| Exanthem subitum | 114 | 115 | 113 | 118 | 0.83 |
| Pertussis | 15 | 8 | 9 | 9 | 0.06 |
| Herpangina | 100 | 157 | 225 | 387 | 2.71 |
| Mumps | 94 | 62 | 125 | 110 | 0.77 |
| Cold with exanthems by Enterovirus | 20 | 25 | 23 | 26 | 0.18 |
| Mucocutaneous Lymphnode Syndrome | 4 | 1 | 6 | 1 | 0.01 |
| Influenza | 33 | 22 | 11 | 17 | 0.06 |
| Acute hemorrhagic conjunctivitis | 2 | 1 | 2 | 2 | 0.05 |
| Epidemic keratoconjunctivitis | 19 | 23 | 28 | 35 | 0.95 |
| Bacterial meningitis | 0 | 0 | 0 | 1 | 0.07 |
| Aseptic meningitis | 1 | 2 | 1 | 1 | 0.07 |
| Mycoplasma pneumonia | 3 | 3 | 2 | 3 | 0.20 |
| Chlamydial pneumonia (excluding psittacosis) | 0 | 0 | 0 | 0 | 0.00 |

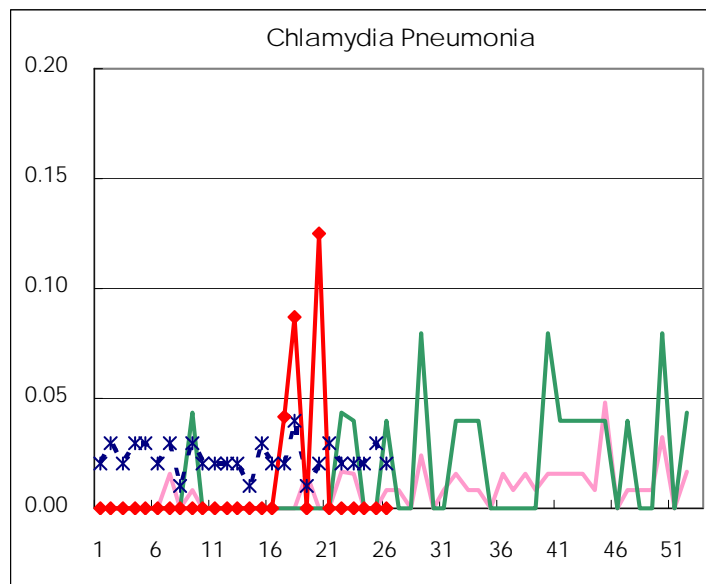
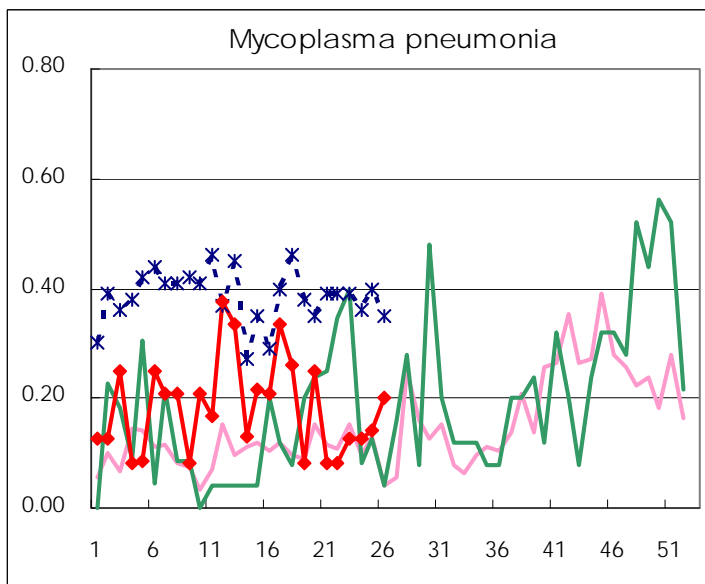
(Blank means 0.)

Disease Trend Graph (weekly reported cases per sentinel in comparison)









| Number of sentinel facilities for weekly reporting | | |
|--|---------------------|---------------------------|
| Types of sentinels | Number of sentinels | Sentinels having reported |
| Pediatric | 150 | 143 |
| Influenza | 290 | 277 |
| Ophthalmic | 39 | 37 |
| Specially-designated | 24 | 15 |

Tokyo Metropolitan Government
Infectious Disease Surveillance Center