

---

INFECTIOUS DISEASES WEEKLY REPORT

# TOKYO IDWR

Tokyo Metropolitan Infectious Disease Surveillance Center

## 17 July 2008 / Number 28

### Surveillance System in Tokyo, Japan

The infectious diseases which all physicians must report

All physicians must report to health centers the incidence of the diseases which are shown at page one. Health centers electronically report the individual cases to Tokyo Metropolitan Infectious Disease Surveillance Center.

The infectious diseases required to be reported by the sentinels

The numbers of patients who visit the sentinel clinics or hospitals during a week are reported to health centers in Tokyo. And they electronically report the numbers to Tokyo Metropolitan Infectious Disease Surveillance Center. We have about 400 sentinel clinics and hospitals in Tokyo.

1st Week is early January and 52nd Week is end of December.

Tokyo Metropolitan Institute of Public Health  
Epidemiological Information Office

TEL:81-3-3363-3213 FAX:81-3-5332-7365

e-mail:[idsc@tokyo-eiken.go.jp](mailto:idsc@tokyo-eiken.go.jp)

URL:[idsc.tokyo-eiken.go.jp/](http://idsc.tokyo-eiken.go.jp/)

---

## Number of patients with the diseases which all physicians must report

Category	Diseases	Tokyo				Japan		
		25th	26th	27th	28th	Cum 2008	28th	Cum 2008
I	Ebola hemorrhagic fever					0	0	0
	Crimean-Congo hemorrhagic fever					0	0	0
	Smallpox					0	0	0
	South American hemorrhagic fever					0	0	0
	Plague					0	0	0
	Marburg disease					0	0	0
	Lassa fever					0	0	0
II	Acute poliomyelitis					0	0	1
	Tuberculosis	68	80	68	65	2160	324	13601
	Diphtheria					0	0	0
	Severe Acute Respiratory Syndrome(SARS)					0	0	0
	Avian influenza H5N1					0	0	0
III	Cholera		1			3	1	24
	Shigellosis	2		3	5	33	9	145
	Enterohemorrhagic Escherichia coli infection	8	10	16	14	84	102	1,250
	Typhoid fever					6	0	27
	Paratyphoid fever				1	5	0	18
IV	Hepatitis E					5	1	28
	West Nile fever					0	0	0
	Hepatitis A				1	18	4	97
	Echinococcosis					0	1	7
	Yellow fever					0	0	0
	Psittacosis					0	0	5
	Omsk hemorrhagic fever					0	0	0
	Relapsing fever					0	0	0
	Kyasanur forest disease					0	0	0
	Q fever					1	0	2
	Rabies					0	0	0
	Coccidioidomycosis					0	0	1
	Monkeypox					0	0	0
	Hemorrhagic fever with renal syndrome					0	0	0
	Western equine encephalitis					0	0	0
	Tick-borne encephalitis					0	0	0
	Anthrax					0	0	0
	Scrub typhus(Tsutsugamushi disease)	1				5	1	118
	Dengue fever	1			4	13	0	33
	Eastern equine encephalitis					0	0	0
	Avian influenza (excluding H5N1)					0	0	0
	Nipah virus infection					0	0	0
	Japanese spotted fever					0	2	20
	Japanese encephalitis					0	0	0
	Epidemic typhus					0	0	0
	Hantavirus pulmonary syndrome					0	0	0
	Herpes B virus infection					0	0	0
	Glanders					0	0	1
	Brucellosis					0	0	0
	Venezuelan equine encephalitis					0	0	0
	Hendra virus infection					0	0	0
	Botulism					0	0	0
Malaria	1	1		1	10	1	21	
Tularemia					0	0	4	
Lyme disease					0	0	3	
Lyssavirus infection(excluding rabies)					0	0	0	
Rift valley fever					0	0	0	
Melioidosis					0	0	0	
Legionellosis	3	3	1	1	39	16	430	
Leptospirosis					0	0	1	
Rocky mountain spotted fever					0	0	0	

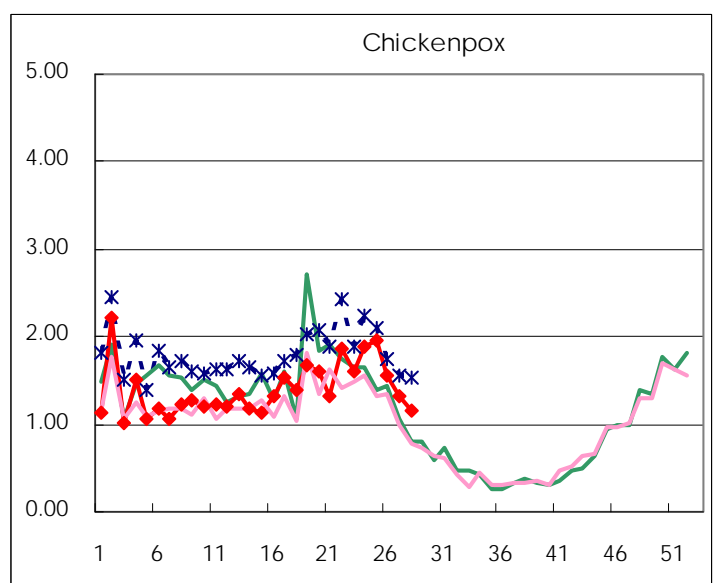
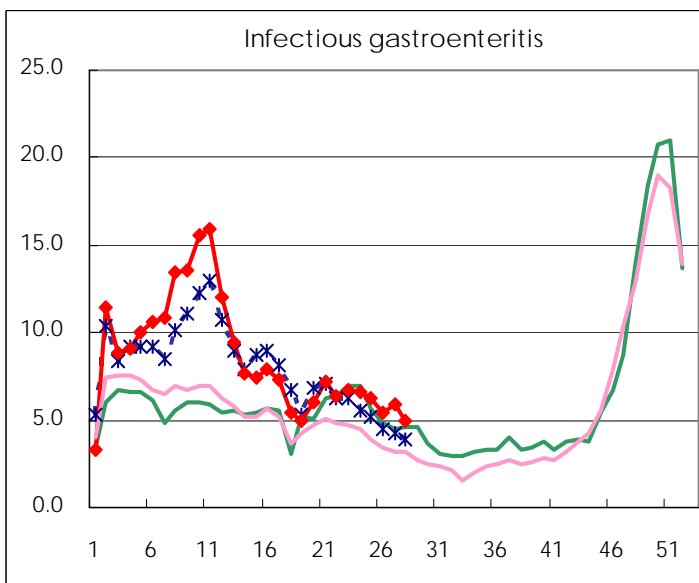
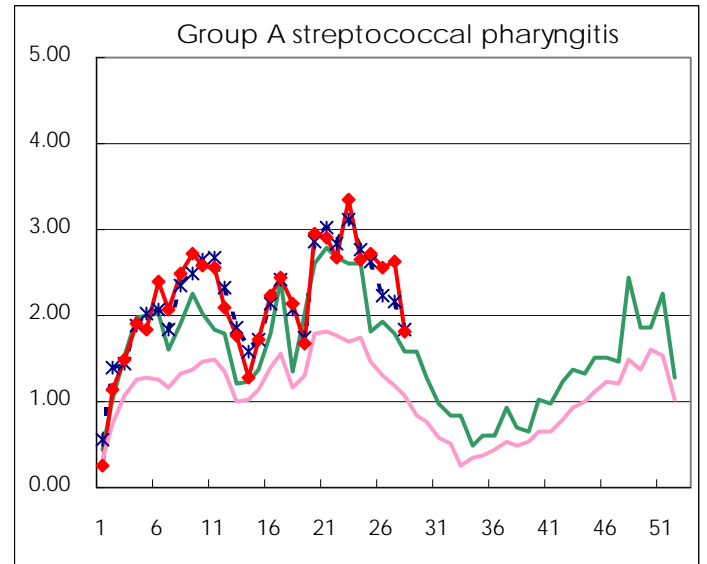
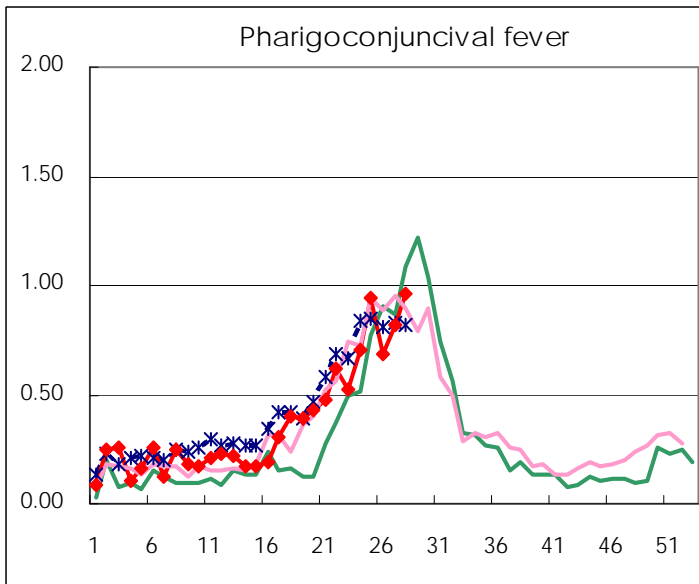
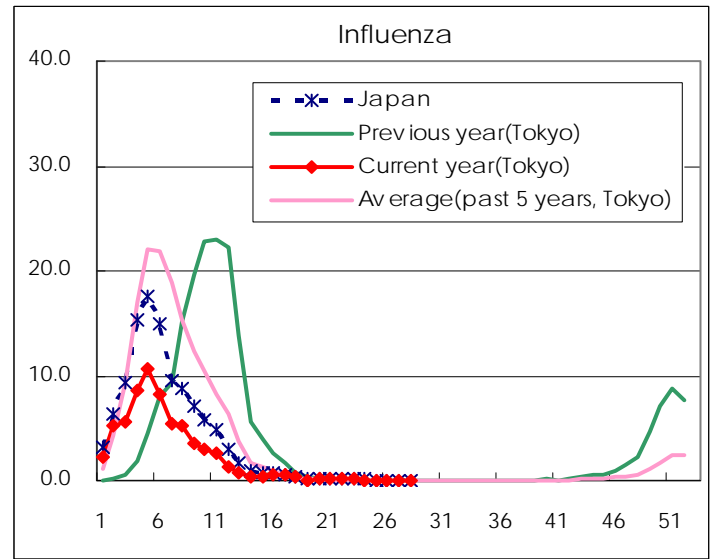
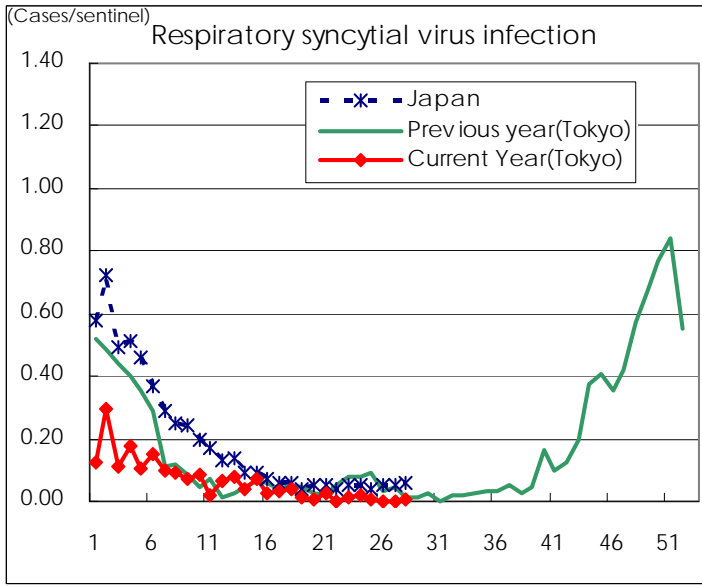
Category	Diseases	Tokyo				Japan		
		25th	26th	27th	28th	Cum 2008	28th	Cum 2008
V	Amebiasis	5	4	5	1	96	3	442
	Viral hepatitis(excluding hepatitis A and E)		1		4	19	4	120
	Acute encephalitis(excluding JE and WNE)	1				6	0	103
	Cryptosporidiosis					2	0	4
	Creutzfeldt-Jakob disease			1	1	11	5	83
	Severe invasive streptococcal infections(TSLS)					14	1	68
	Acquired immunodeficiency syndrome (AIDS)	7	13	12	8	292	14	761
	Giardiasis		1	1		14	1	41
	Meningococcal meningitis					2	0	10
	Congenital rubella syndrome					0	0	0
	Syphilis	7		3	5	107	12	432
	Tetanus					2	2	53
	Vancomycin-resistant S. aureus infection					0	0	0
	Vancomycin-resistant Enterococcus infection					8	3	43
	Rubella		2	1	1	29	4	242
Measles	16	18	20	17	1,080	149	10,232	

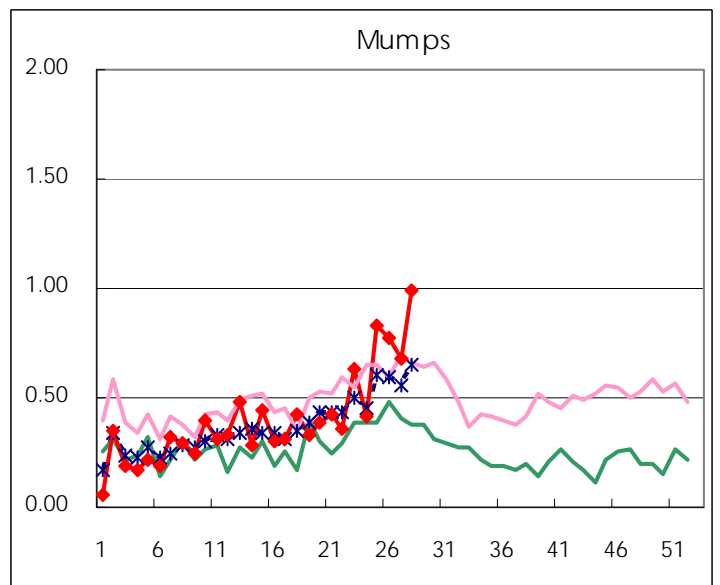
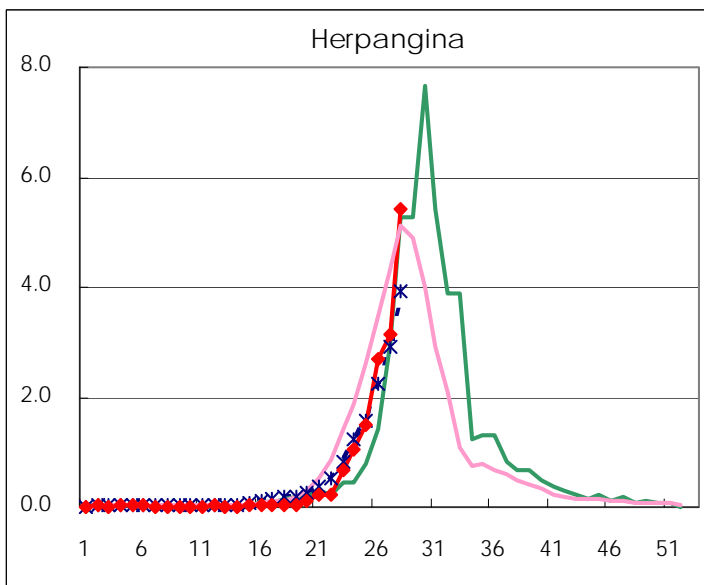
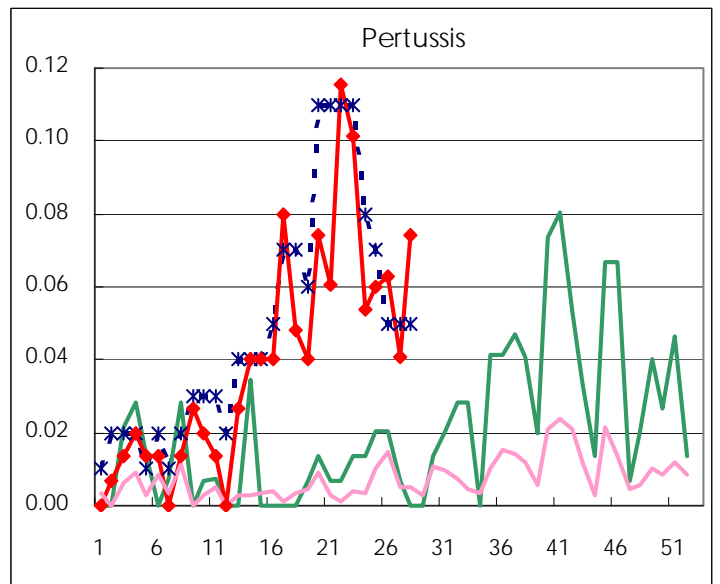
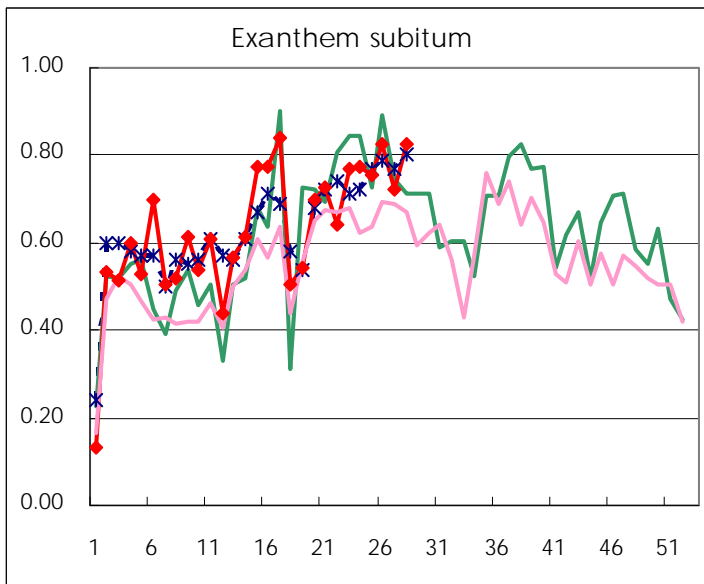
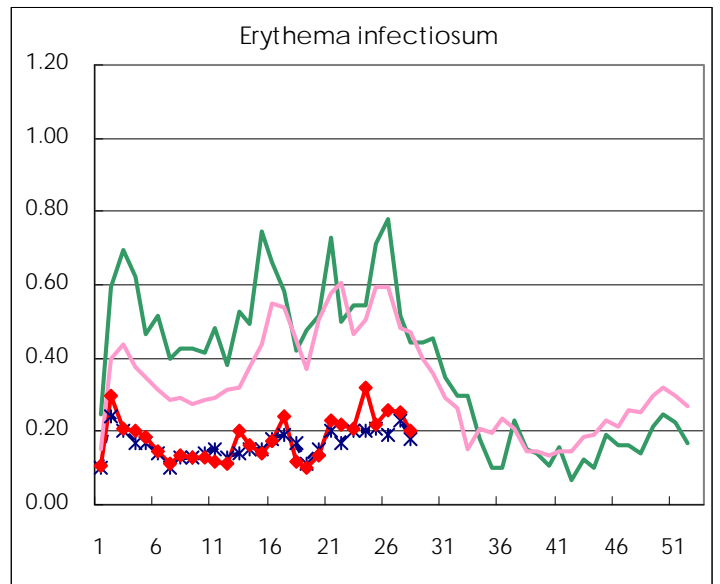
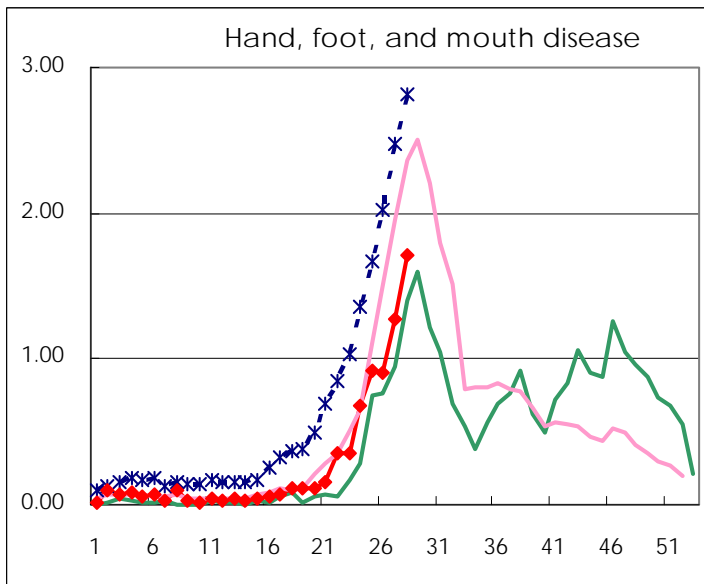
Number of patients with the diseases to be reported  
by the designated clinics and hospitals

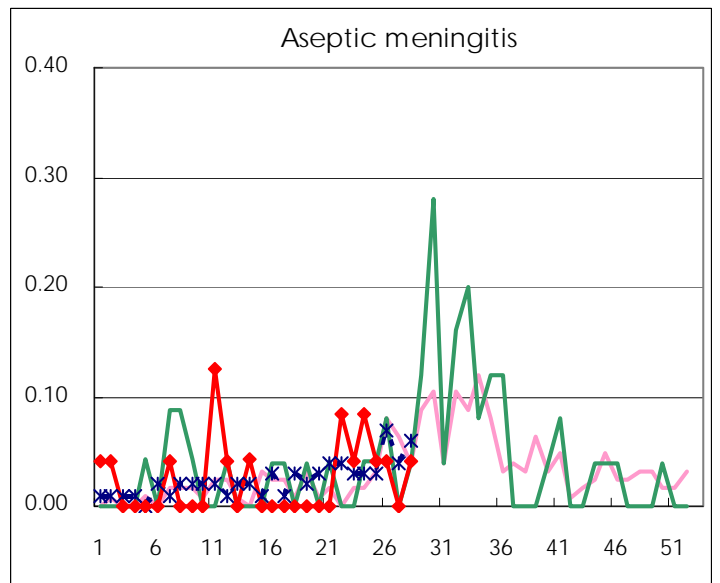
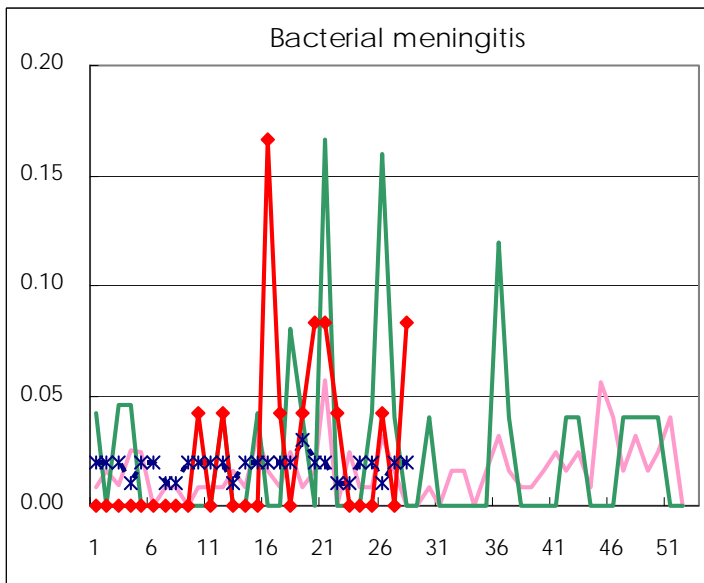
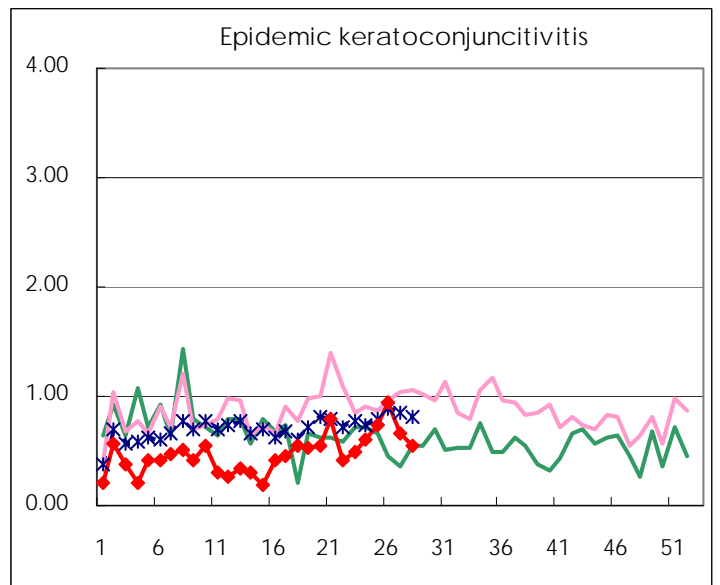
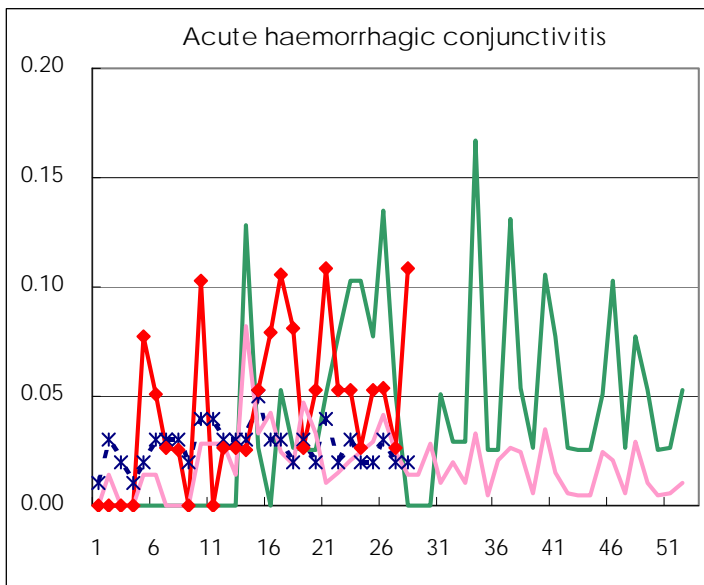
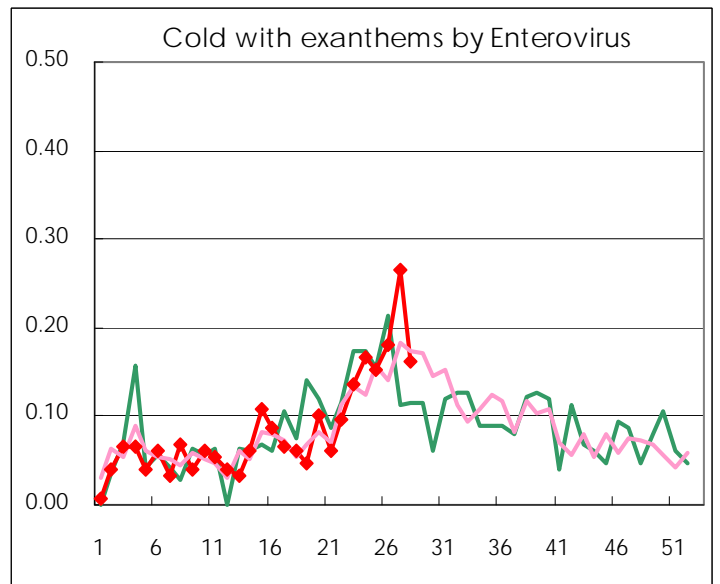
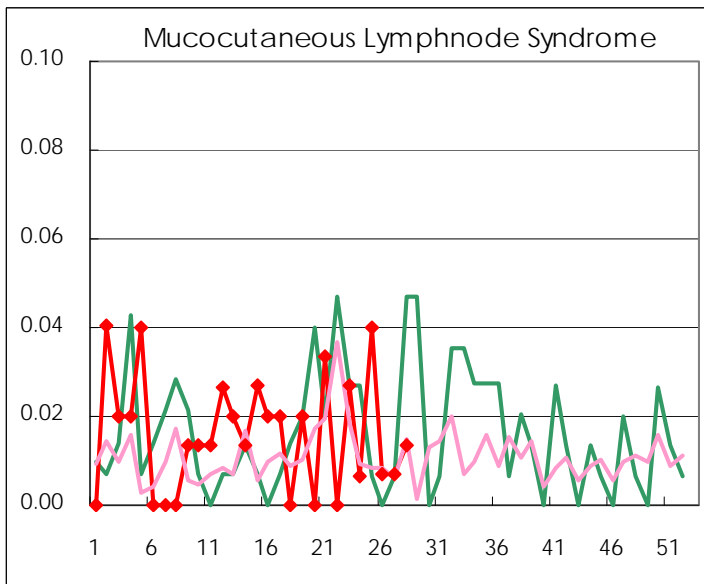
Diseases	2008				
	25th	26th	27th	28th	/sentinel
Respiratory syncytial virus infection	1	0	0	1	0.01
Pharyngoconjunctival fever	142	98	121	143	0.97
Group A streptococcal pharyngitis	408	366	385	270	1.82
Infectious gastroenteritis	932	780	867	739	4.99
Chickenpox	295	224	194	170	1.15
Hand, foot, and mouth disease	139	130	188	254	1.72
Erythema infectiosum	33	37	37	30	0.20
Exanthem subitum	113	118	106	122	0.82
Pertussis	9	9	6	11	0.07
Herpangina	225	387	460	803	5.43
Mumps	125	110	100	147	0.99
Cold with exanthems by Enterovirus	23	26	39	24	0.16
Mucocutaneous Lymphnode Syndrome	6	1	1	2	0.01
Influenza	11	17	7	5	0.02
Acute hemorrhagic conjunctivitis	2	2	1	4	0.11
Epidemic keratoconjunctivitis	28	35	25	20	0.54
Bacterial meningitis	0	1	0	2	0.08
Aseptic meningitis	1	1	0	1	0.04
Mycoplasma pneumonia	2	3	3	2	0.08
Chlamydial pneumonia (excluding psittacosis)	0	0	0	0	0.00

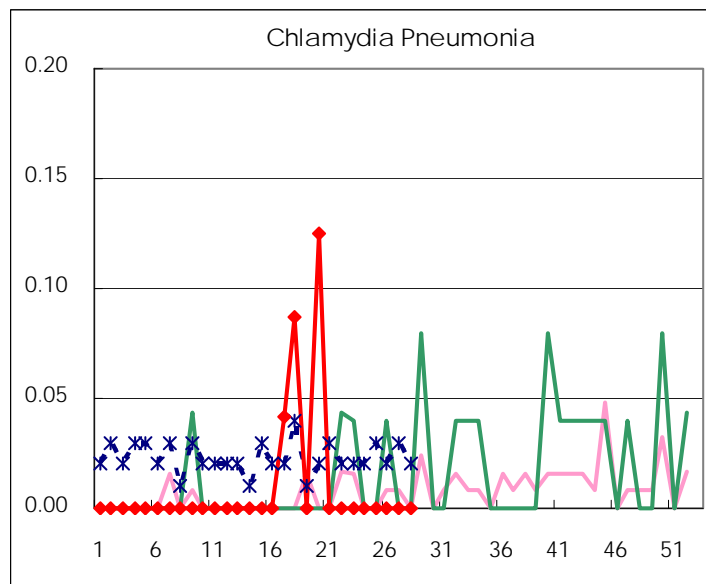
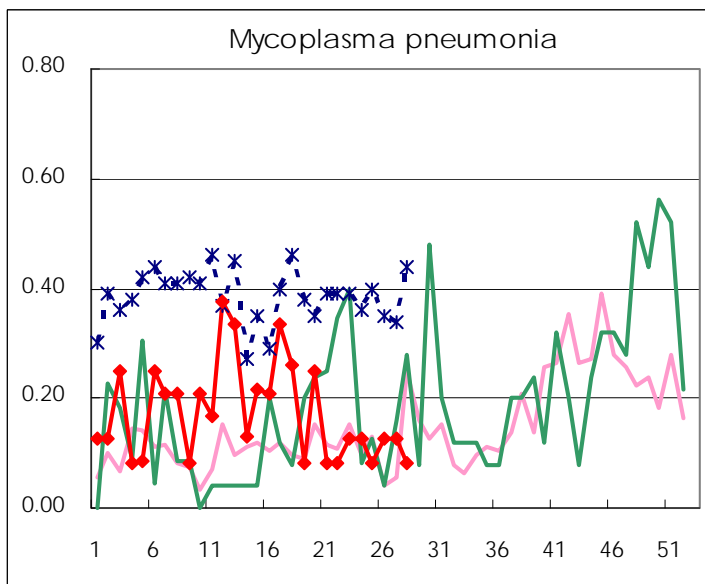
( Blank means 0. )

# Disease Trend Graph (weekly reported cases per sentinel in comparison)









Number of sentinel facilities for weekly reporting		
Types of sentinels	Number of sentinels	Sentinels having reported
Pediatric	150	148
Influenza	290	285
Ophthalmic	39	37
Specially-designated	24	24

Tokyo Metropolitan Government  
**Infectious Disease Surveillance Center**