
INFECTIOUS DISEASES WEEKLY REPORT

TOKYO IDWR

Tokyo Metropolitan Infectious Disease Surveillance Center

24 July 2008 / Number 29

Surveillance System in Tokyo, Japan

The infectious diseases which all physicians must report

All physicians must report to health centers the incidence of the diseases which are shown at page one. Health centers electronically report the individual cases to Tokyo Metropolitan Infectious Disease Surveillance Center.

The infectious diseases required to be reported by the sentinels

The numbers of patients who visit the sentinel clinics or hospitals during a week are reported to health centers in Tokyo. And they electronically report the numbers to Tokyo Metropolitan Infectious Disease Surveillance Center. We have about 400 sentinel clinics and hospitals in Tokyo.

1st Week is early January and 52nd Week is end of December.

Tokyo Metropolitan Institute of Public Health
Epidemiological Information Office

TEL:81-3-3363-3213 FAX:81-3-5332-7365

e-mail:idsc@tokyo-eiken.go.jp

URL:idsc.tokyo-eiken.go.jp/

Number of patients with the diseases which all physicians must report

Category	Diseases	Tokyo				Cum 2008	Japan	
		26th	27th	28th	29th		29th	Cum 2008
I	Ebola hemorrhagic fever							
	Crimean-Congo hemorrhagic fever							
	Smallpox							
	South American hemorrhagic fever							
	Plague							
	Marburg disease							
	Lassa fever							
II	Acute poliomyelitis							1
	Tuberculosis	83	80	75	47	2243	278	14114
	Diphtheria							
	Severe Acute Respiratory Syndrome(SARS)							
	Avian influenza H5N1							
III	Cholera	1				3	1	25
	Shigellosis		3	5	3	36	6	151
	Enterohemorrhagic Escherichia coli infection	10	16	14	13	97	121	1,382
	Typhoid fever					6	1	28
	Paratyphoid fever			1		5	1	19
IV	Hepatitis E					5		28
	West Nile fever							
	Hepatitis A			1		18		100
	Echinococcosis							7
	Yellow fever							
	Psittacosis							5
	Omsk hemorrhagic fever							
	Relapsing fever							
	Kyasanur forest disease							
	Q fever					1		2
	Rabies							
	Coccidioidomycosis							1
	Monkeypox							
	Hemorrhagic fever with renal syndrome							
	Western equine encephalitis							
	Tick-borne encephalitis							
	Anthrax							
	Scrub typhus(Tsutsugamushi disease)					5	1	119
	Dengue fever			4	1	14	2	35
	Eastern equine encephalitis							
	Avian influenza (excluding H5N1)							
	Nipah virus infection							
	Japanese spotted fever						1	22
	Japanese encephalitis							
	Epidemic typhus							
	Hantavirus pulmonary syndrome							
	Herpes B virus infection							
	Glanders							
	Brucellosis							1
	Venezuelan equine encephalitis							
Hendra virus infection								
Botulism								
Malaria	1		1	1	11	1	23	
Tularemia							4	
Lyme disease							3	
Lyssavirus infection(excluding rabies)								
Rift valley fever								
Melioidosis								
Legionellosis	3	1	1	1	40	27	461	
Leptospirosis							1	
Rocky mountain spotted fever								

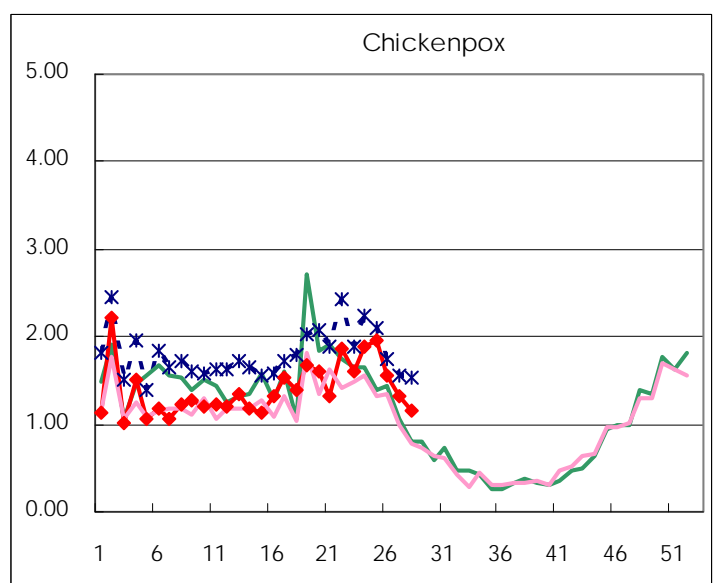
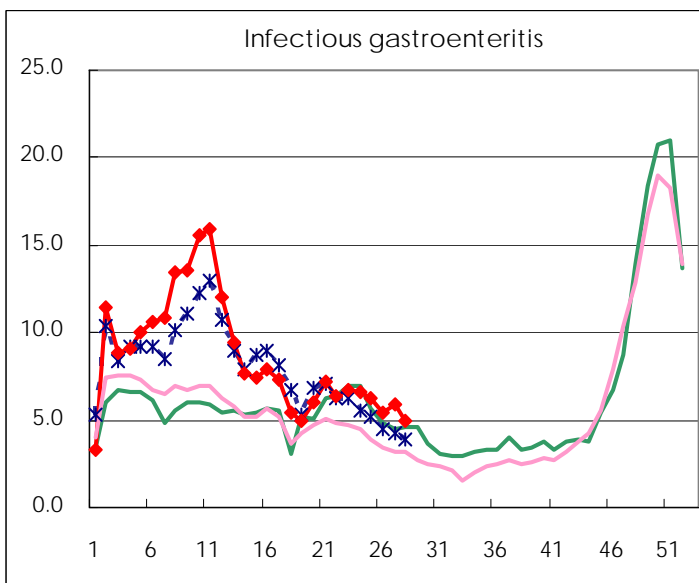
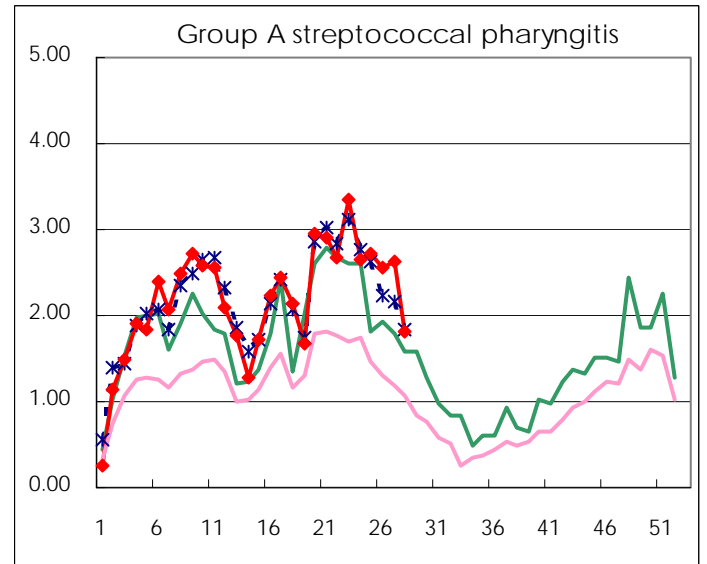
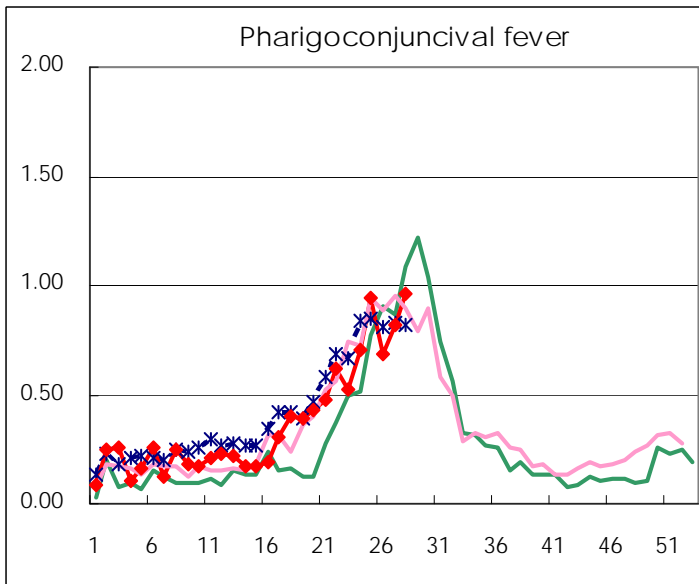
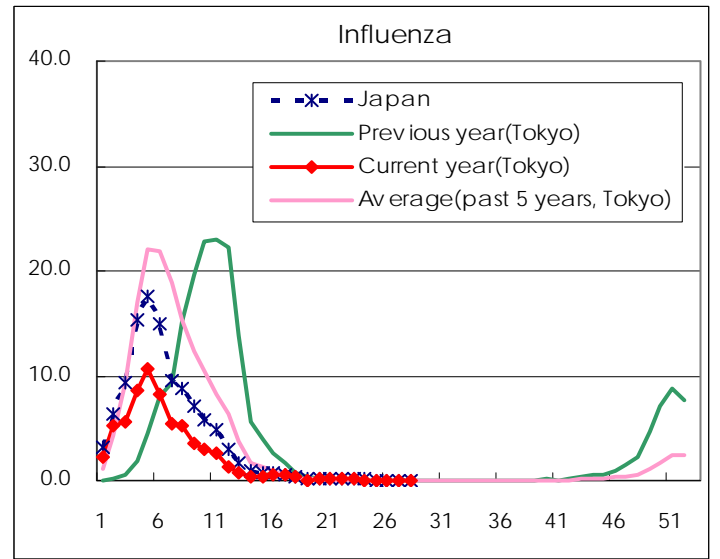
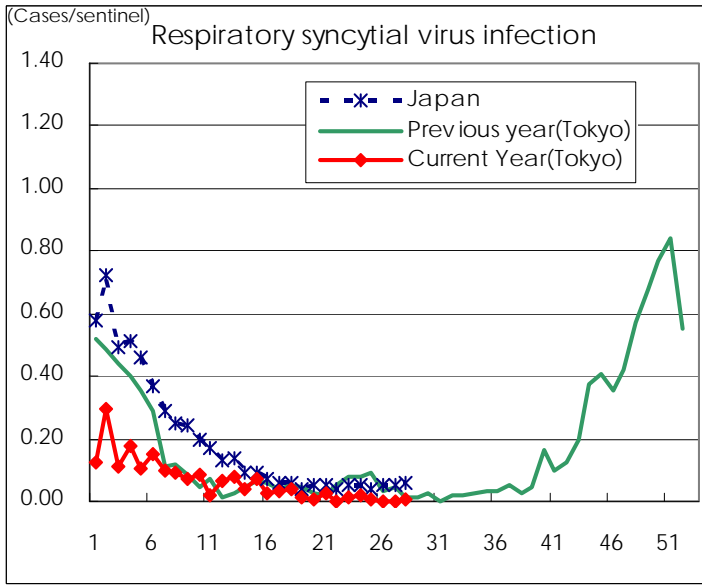
Category	Diseases	Tokyo				Japan		
		26th	27th	28th	29th	Cum 2008	29th	Cum 2008
V	Amebiasis	4	5	1	6	102	14	467
	Viral hepatitis(excluding hepatitis A and E)	1		4	3	22	1	126
	Acute encephalitis(excluding JE and WNE)					6		106
	Cryptosporidiosis					2		3
	Creutzfeldt-Jakob disease		1	1		11	4	88
	Severe invasive streptococcal infections(TSLS)				1	15	1	72
	Acquired immunodeficiency syndrome (AIDS)	13	12	8	16	308	24	809
	Giardiasis	1	1		2	16	3	45
	Meningococcal meningitis					2		10
	Congenital rubella syndrome							
	Syphilis		3	5	3	110	10	451
	Tetanus				1	3	2	56
	Vancomycin-resistant S. aureus infection							
	Vancomycin-resistant Enterococcus infection				1	9		46
	Rubella	2	1	1	2	31	3	247
Measles	18	20	17	16	1,096	71	1,338	

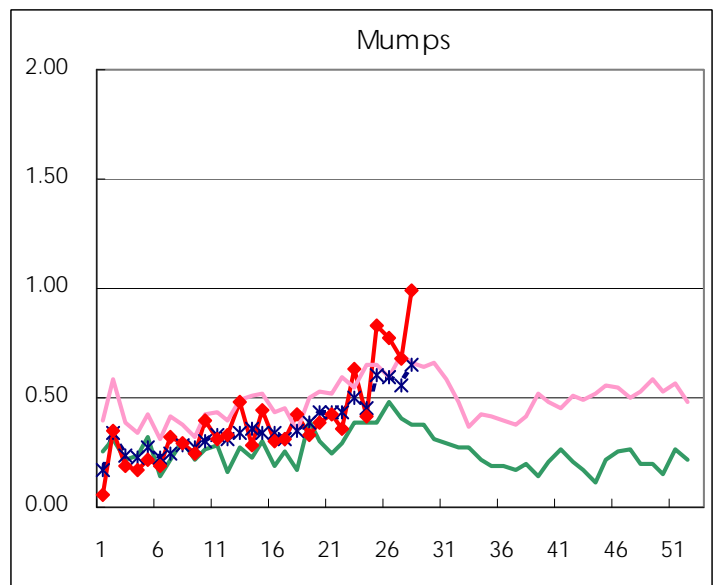
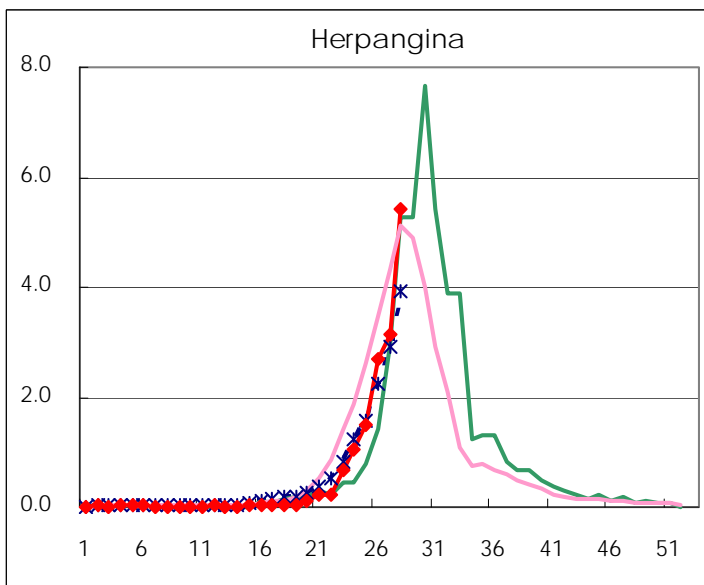
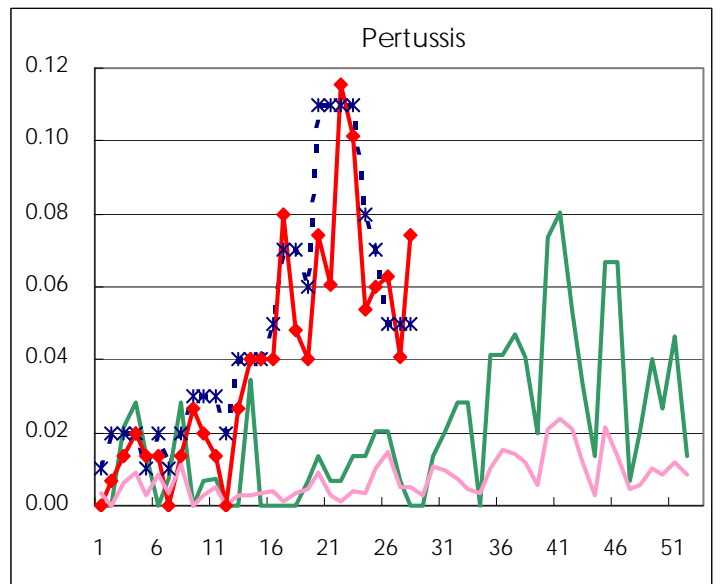
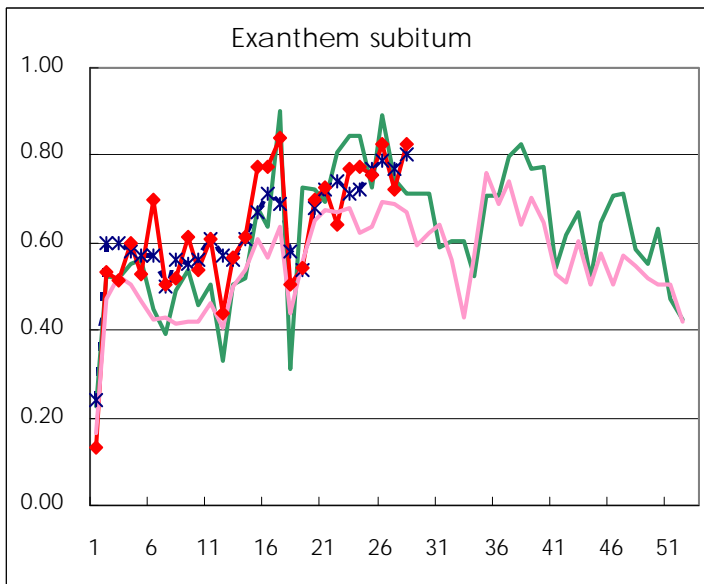
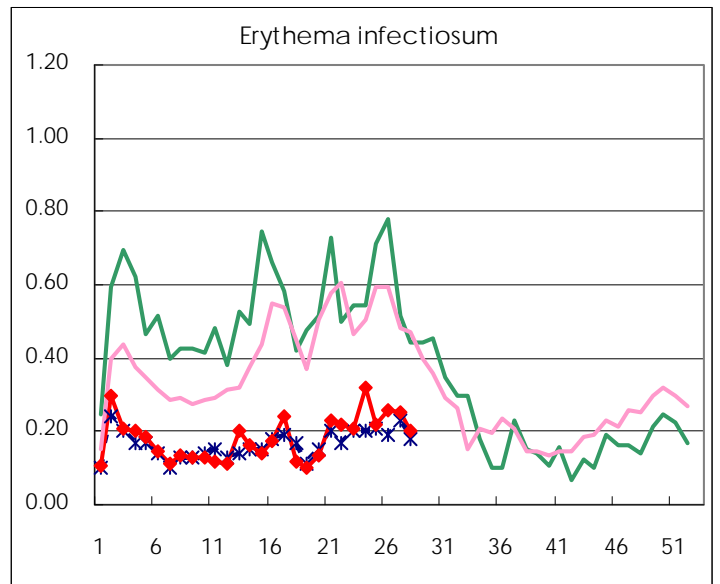
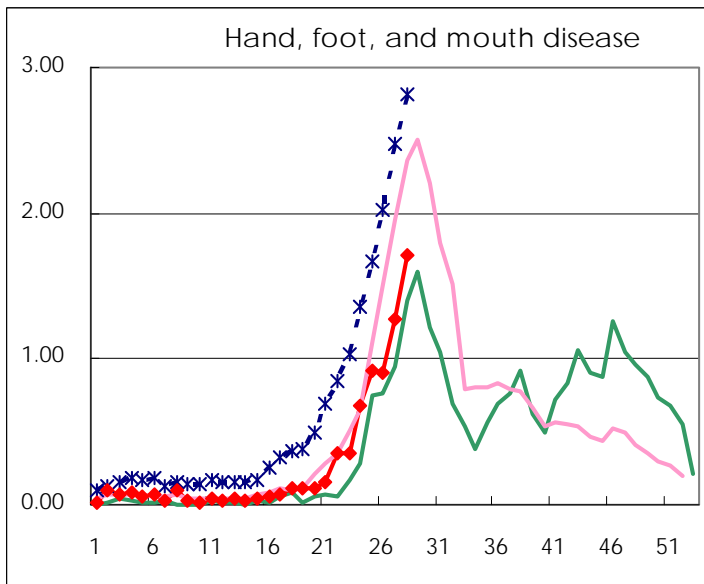
Number of patients with the diseases to be reported
by the designated clinics and hospitals

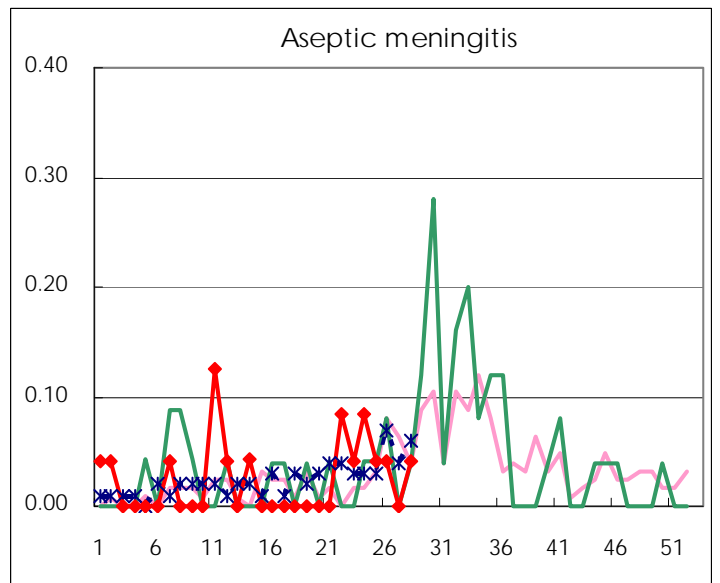
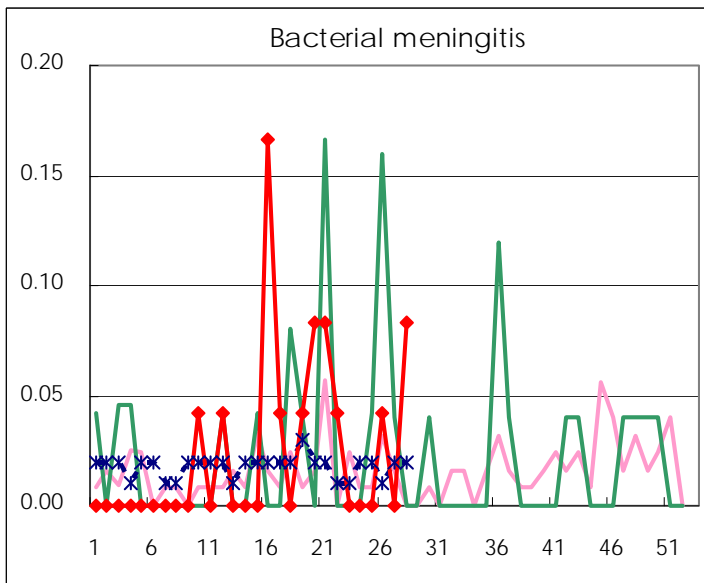
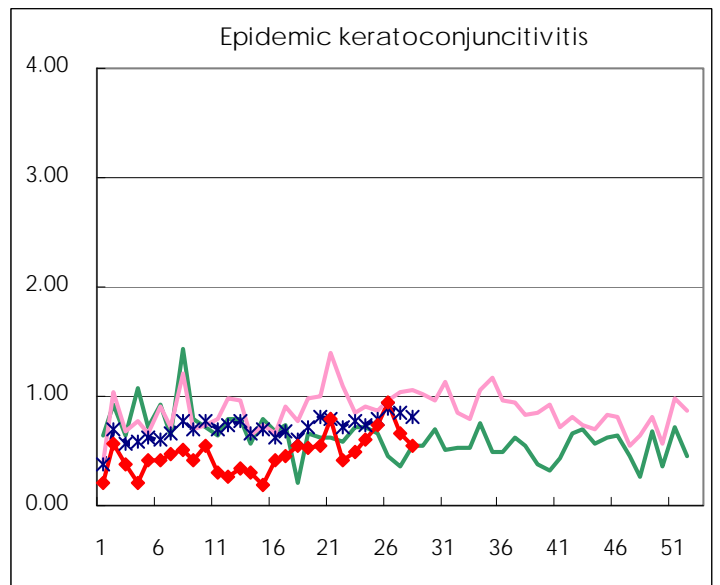
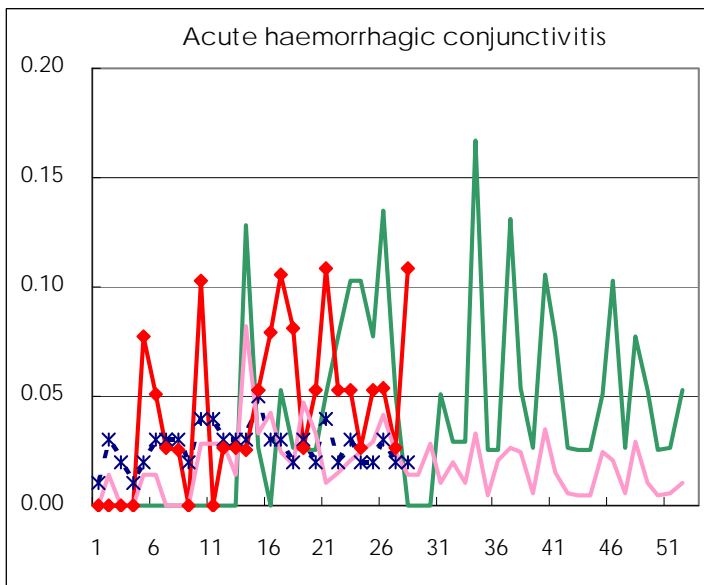
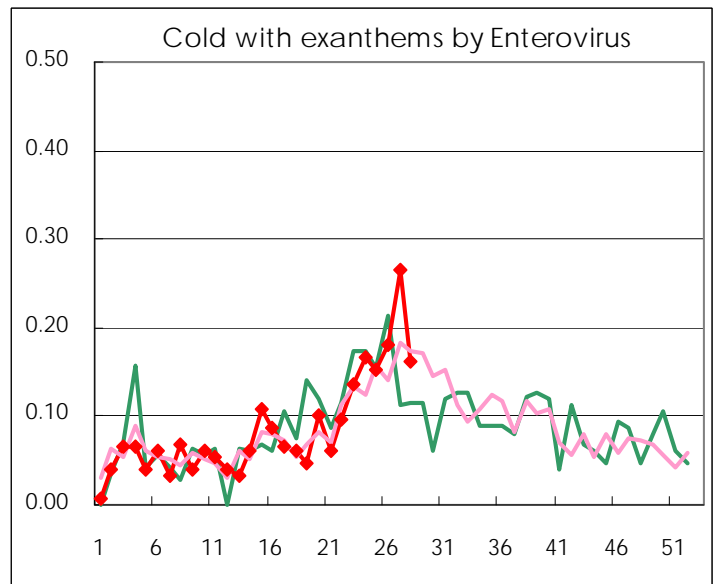
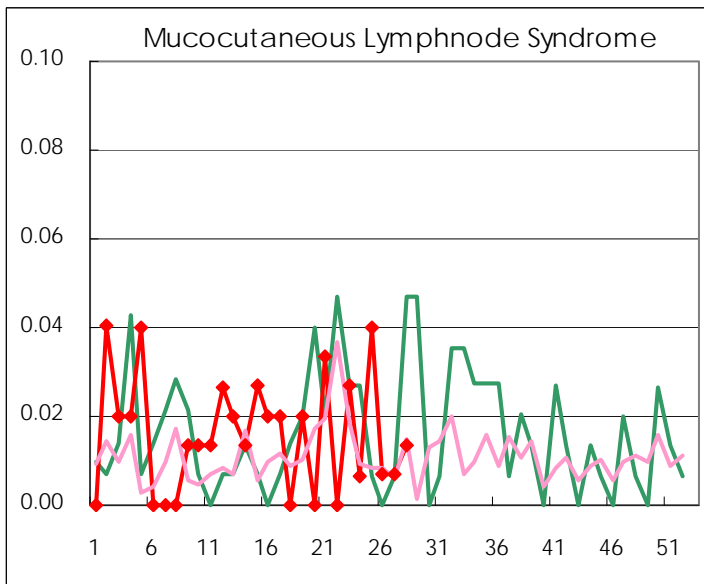
Diseases	2008				
	26th	27th	28th	29th	/sentinel
Respiratory syncytial virus infection	0	0	1	2	0.01
Pharyngoconjunctival fever	98	121	143	152	1.06
Group A streptococcal pharyngitis	366	385	270	199	1.39
Infectious gastroenteritis	780	867	739	580	4.06
Chickenpox	224	194	170	150	1.05
Hand, foot, and mouth disease	130	188	254	300	2.10
Erythema infectiosum	37	37	30	39	0.27
Exanthem subitum	118	106	122	93	0.65
Pertussis	9	6	11	10	0.07
Herpangina	387	460	803	1,028	7.19
Mumps	110	100	147	87	0.61
Cold with exanthems by Enterovirus	26	39	24	28	0.20
Mucocutaneous Lymphnode Syndrome	1	1	2	2	0.01
Influenza	17	7	5	6	0.02
Acute hemorrhagic conjunctivitis	2	1	4	2	0.05
Epidemic keratoconjunctivitis	35	25	20	24	0.63
Bacterial meningitis	1	0	2	0	0.00
Aseptic meningitis	1	0	1	2	0.09
Mycoplasma pneumonia	3	3	2	3	0.13
Chlamydial pneumonia (excluding psittacosis)	0	0	0	1	0.04

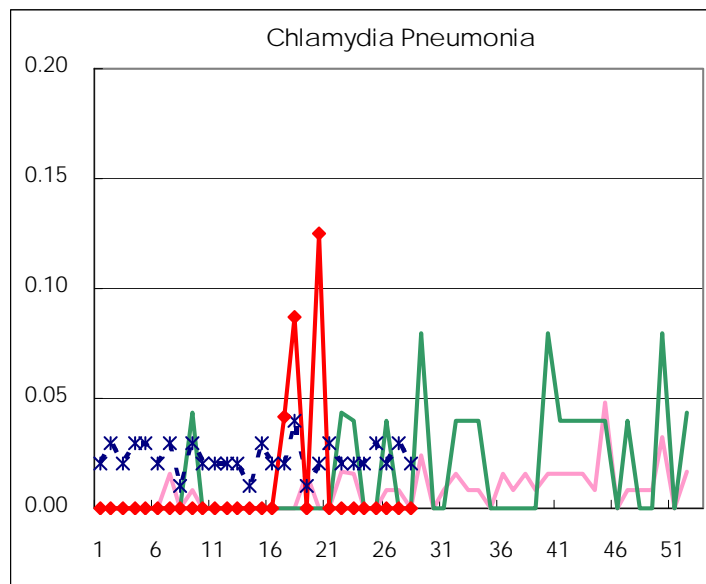
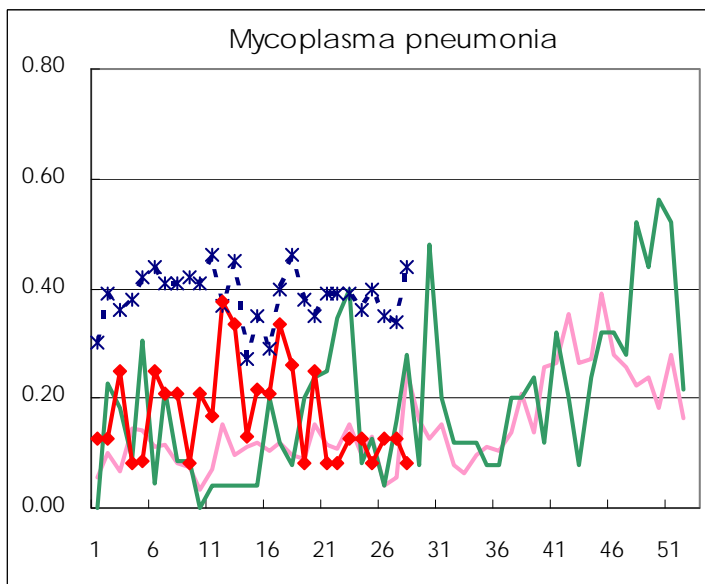
(Blank means 0.)

Disease Trend Graph (weekly reported cases per sentinel in comparison)









Number of sentinel facilities for weekly reporting		
Types of sentinels	Number of sentinels	Sentinels having reported
Pediatric	150	148
Influenza	290	285
Ophthalmic	39	37
Specially-designated	24	24

Tokyo Metropolitan Government
Infectious Disease Surveillance Center