
INFECTIOUS DISEASES WEEKLY REPORT

TOKYO IDWR

Tokyo Metropolitan Infectious Disease Surveillance Center

31 July 2008 / Number 30

Surveillance System in Tokyo, Japan

The infectious diseases which all physicians must report

All physicians must report to health centers the incidence of the diseases which are shown at page one. Health centers electronically report the individual cases to Tokyo Metropolitan Infectious Disease Surveillance Center.

The infectious diseases required to be reported by the sentinels

The numbers of patients who visit the sentinel clinics or hospitals during a week are reported to health centers in Tokyo. And they electronically report the numbers to Tokyo Metropolitan Infectious Disease Surveillance Center. We have about 400 sentinel clinics and hospitals in Tokyo.

1st Week is early January and 52nd Week is end of December.

Tokyo Metropolitan Institute of Public Health
Epidemiological Information Office

TEL:81-3-3363-3213 FAX:81-3-5332-7365

e-mail:idsc@tokyo-eiken.go.jp

URL:idsc.tokyo-eiken.go.jp/

Number of patients with the diseases which all physicians must report

Category	Diseases	Tokyo				Japan		
		27th	28th	29th	30th	Cum 2008	30th	Cum 2008
I	Ebola hemorrhagic fever					0	0	0
	Crimean-Congo hemorrhagic fever					0	0	0
	Smallpox					0	0	0
	South American hemorrhagic fever					0	0	0
	Plague					0	0	0
	Marburg disease					0	0	0
	Lassa fever					0	0	0
II	Acute poliomyelitis					0	0	1
	Tuberculosis	83	82	66	50	2335	231	14622
	Diphtheria					0	0	0
	Severe Acute Respiratory Syndrome(SARS)					0	0	0
	Avian influenza H5N1					0	0	0
III	Cholera					3	1	26
	Shigellosis	3	5	3	1	37	14	165
	Enterohemorrhagic Escherichia coli infection	16	14	13	7	104	117	1,533
	Typhoid fever					6	2	30
	Paratyphoid fever		1			5	1	20
IV	Hepatitis E					5	0	29
	West Nile fever					0	0	0
	Hepatitis A		1			18	5	106
	Echinococcosis					0	0	7
	Yellow fever					0	0	0
	Psittacosis					0	0	5
	Omsk hemorrhagic fever					0	0	0
	Relapsing fever					0	0	0
	Kyasanur forest disease					0	0	0
	Q fever					1	0	2
	Rabies					0	0	0
	Coccidioidomycosis					0	0	1
	Monkeypox					0	0	0
	Hemorrhagic fever with renal syndrome					0	0	0
	Western equine encephalitis					0	0	0
	Tick-borne encephalitis					0	0	0
	Anthrax					0	0	0
	Scrub typhus(Tsutsugamushi disease)					5	0	119
	Dengue fever		4	1		14	1	36
	Eastern equine encephalitis					0	0	0
	Avian influenza (excluding H5N1)					0	0	0
	Nipah virus infection					0	0	0
	Japanese spotted fever					0	0	24
	Japanese encephalitis					0	0	0
	Epidemic typhus					0	0	0
	Hantavirus pulmonary syndrome					0	0	0
	Herpes B virus infection					0	0	0
	Glanders					0	0	0
	Brucellosis					0	0	2
	Venezuelan equine encephalitis					0	0	0
	Hendra virus infection					0	0	0
	Botulism					0	0	0
Malaria		1	1	1	12	2	25	
Tularemia					0	0	4	
Lyme disease					0	0	3	
Lyssavirus infection(excluding rabies)					0	0	0	
Rift valley fever					0	0	0	
Melioidosis					0	0	0	
Legionellosis	1	1	1	1	41	7	473	
Leptospirosis					0	0	1	
Rocky mountain spotted fever					0	0	0	

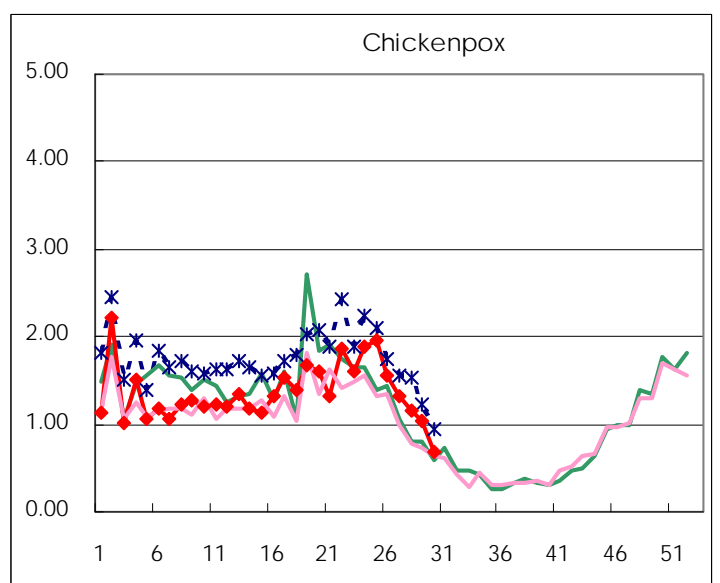
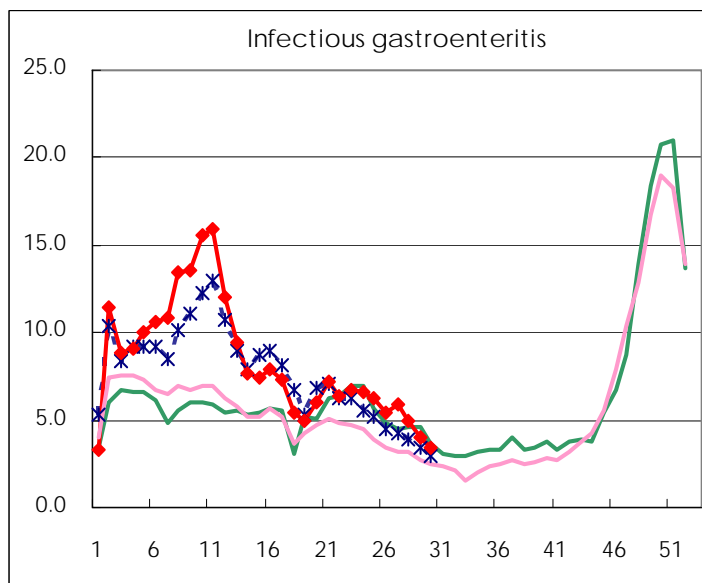
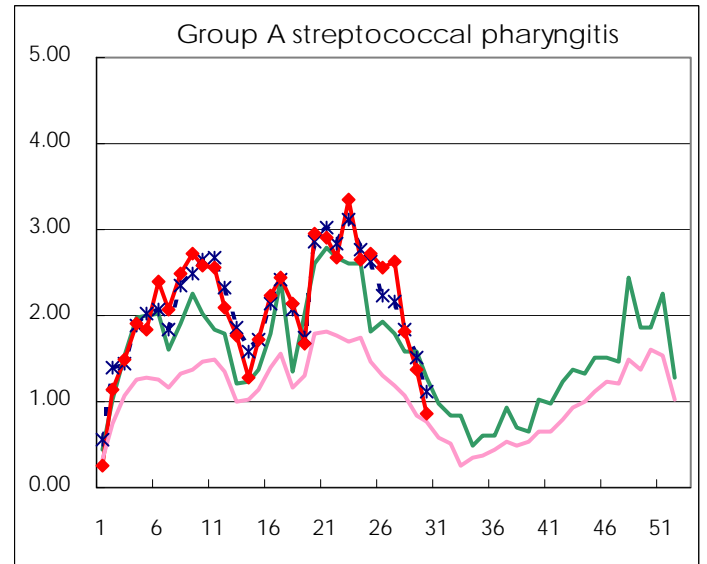
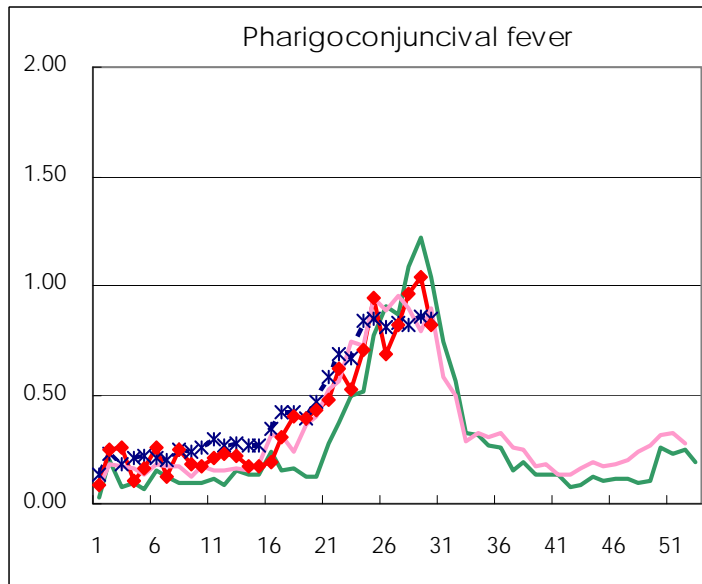
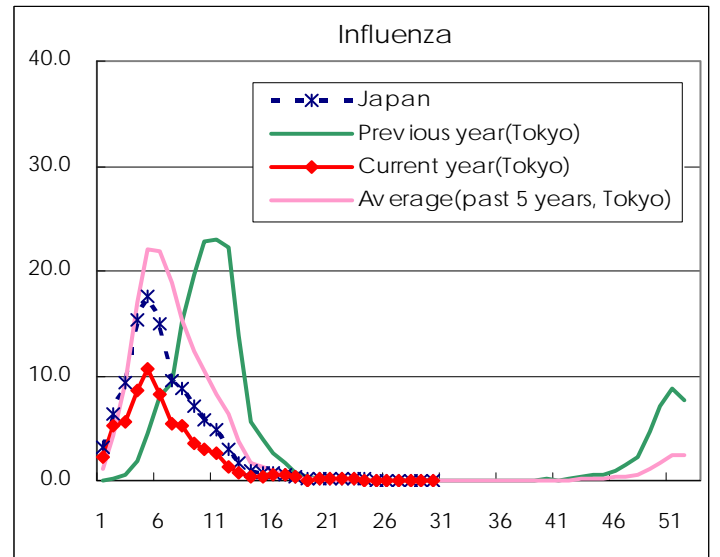
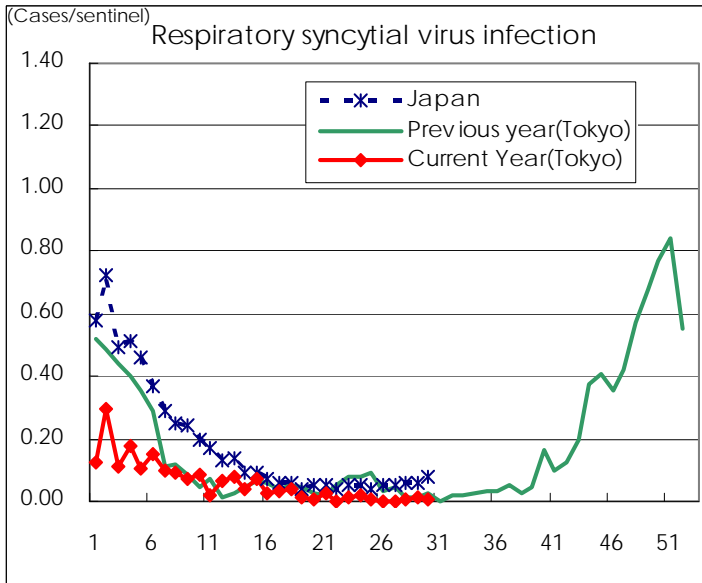
Category	Diseases	Tokyo				Japan		
		27th	28th	29th	30th	Cum 2008	30th	Cum 2008
V	Amebiasis	5	1	7	3	106	10	483
	Viral hepatitis(excluding hepatitis A and E)		4	3	1	23	0	128
	Acute encephalitis(excluding JE and WNE)					6	1	109
	Cryptosporidiosis					2	0	3
	Creutzfeldt-Jakob disease	1	1			11	0	91
	Severe invasive streptococcal infections(TSLS)			1		15	0	72
	Acquired immunodeficiency syndrome (AIDS)	12	8	16	10	318	8	830
	Giardiasis	1		2		16	0	45
	Meningococcal meningitis					2	0	10
	Congenital rubella syndrome					0	0	0
	Syphilis	3	5	3	4	114	5	466
	Tetanus			1		3	3	61
	Vancomycin-resistant S. aureus infection					0	0	0
	Vancomycin-resistant Enterococcus infection			1	1	10	0	48
	Rubella	1	1	2		31	0	247
Measles	20	17	17	13	1,110	53	10,442	

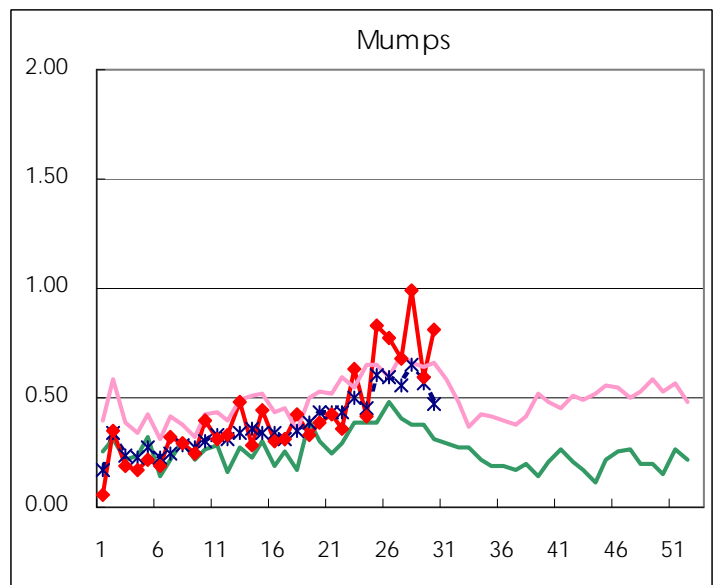
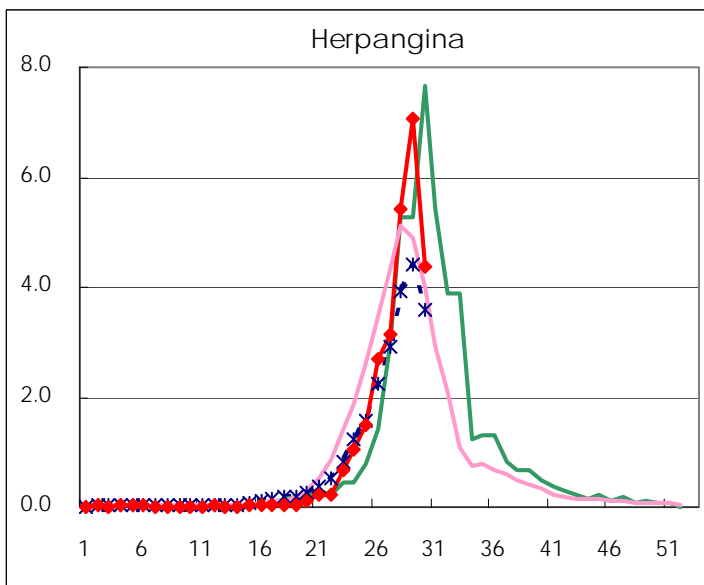
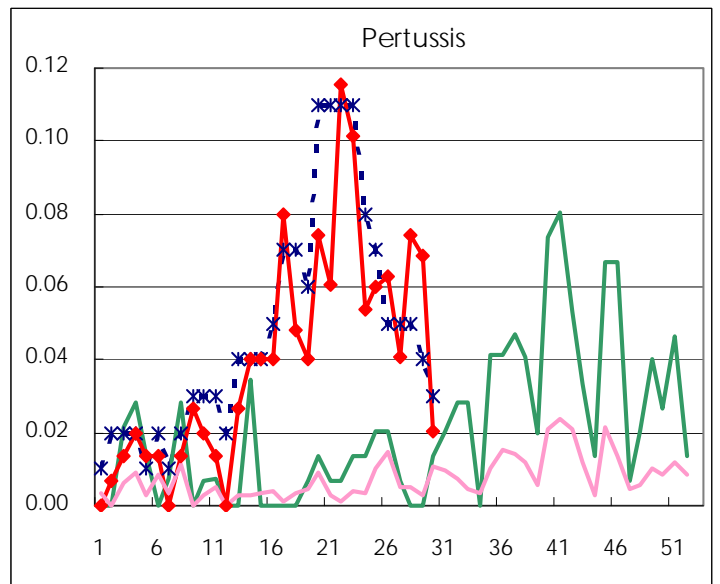
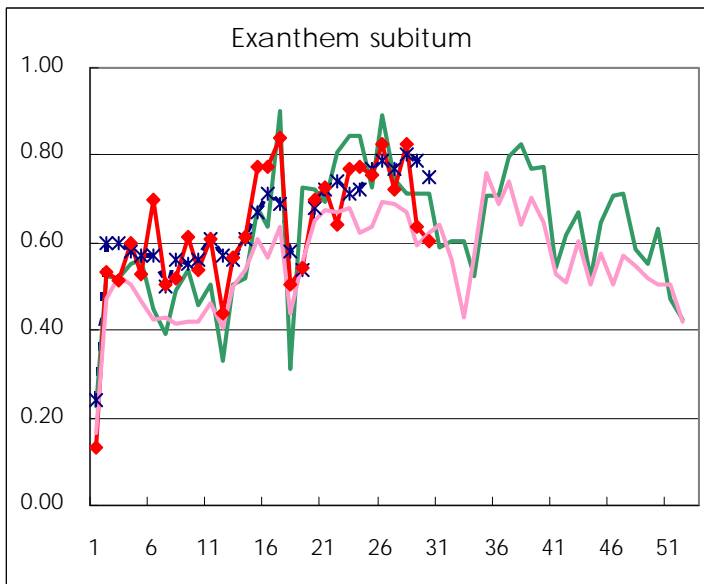
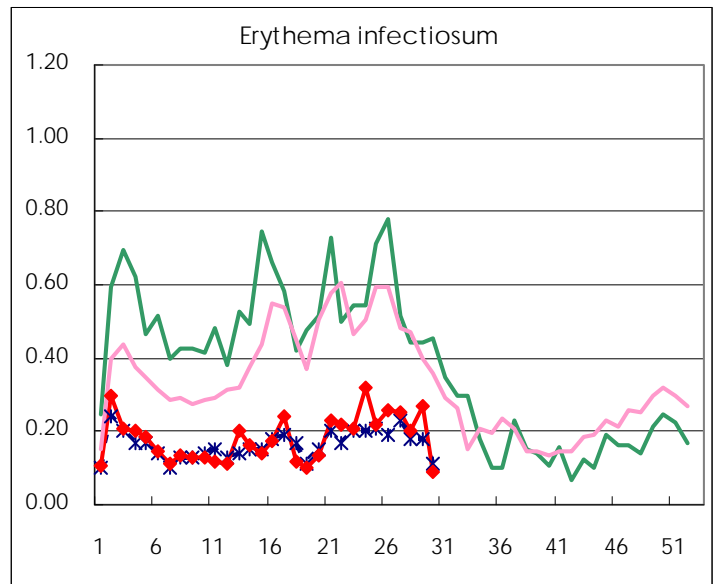
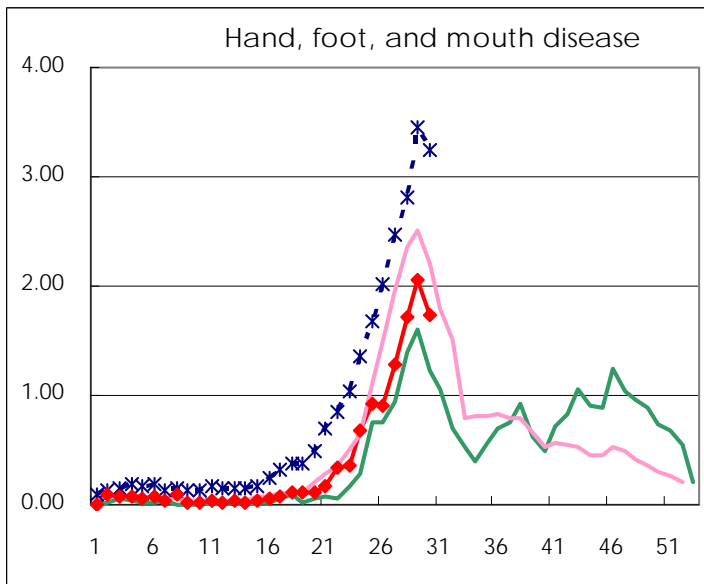
Number of patients with the diseases to be reported
by the designated clinics and hospitals

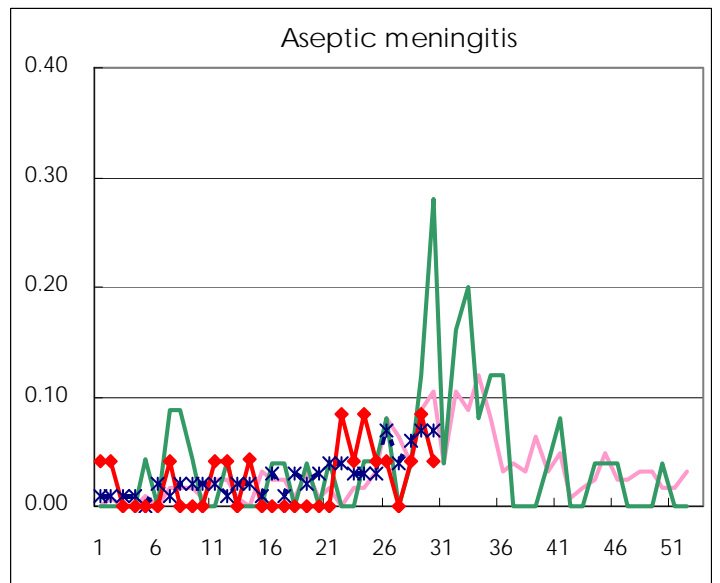
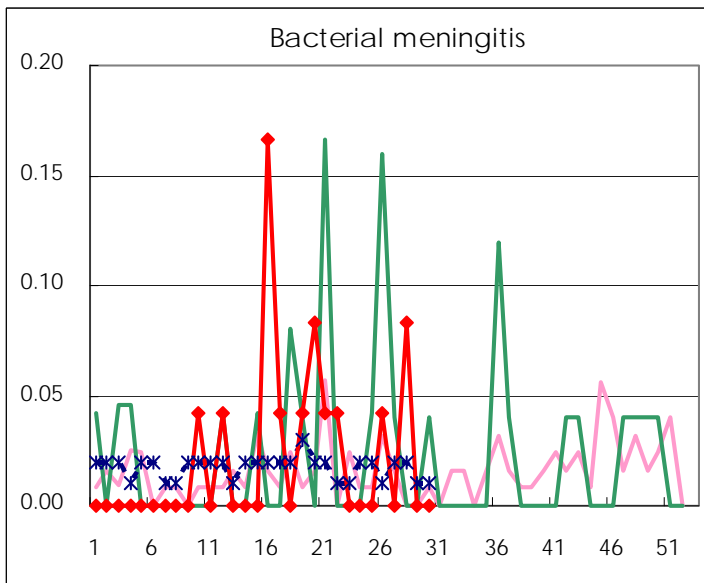
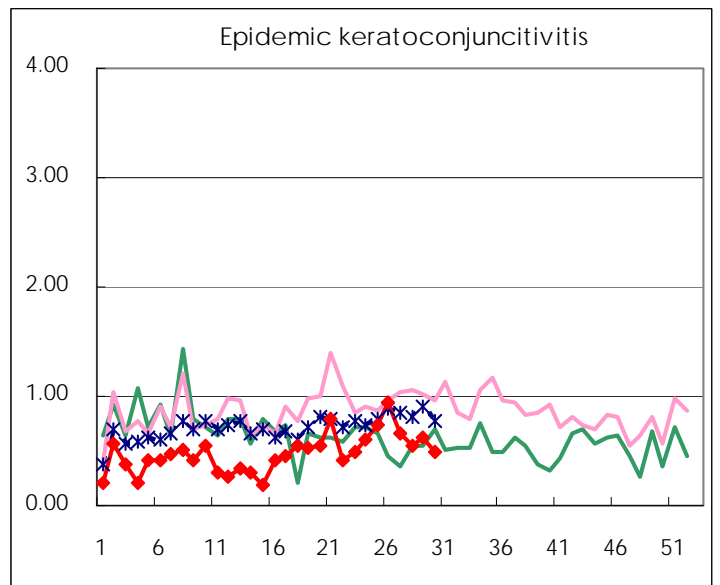
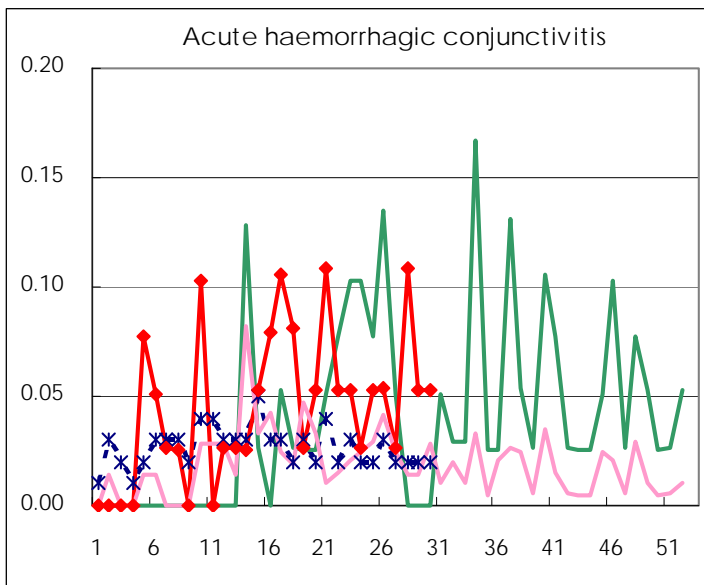
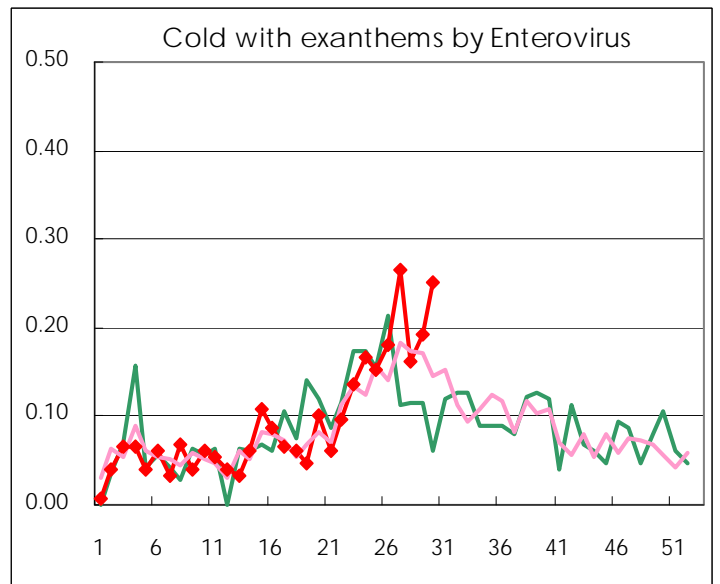
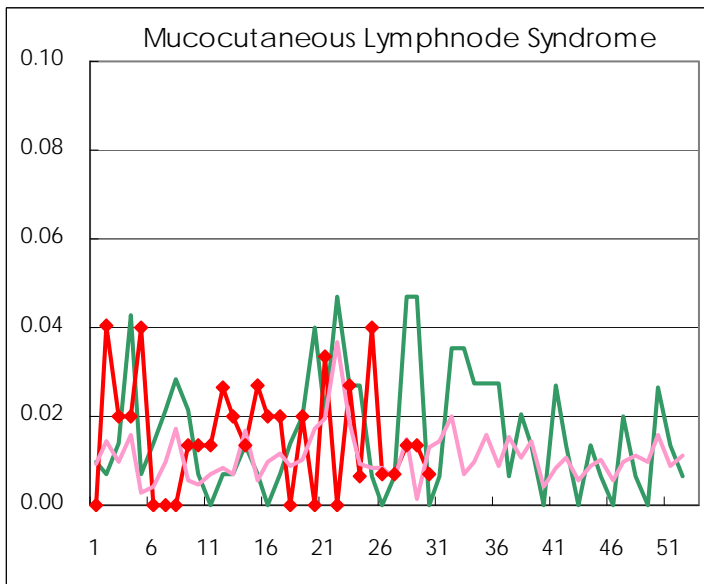
Diseases	2008				
	27th	28th	29th	30th	/sentinel
Respiratory syncytial virus infection	0	1	2	1	0.01
Pharyngoconjunctival fever	121	143	152	121	0.82
Group A streptococcal pharyngitis	385	270	199	126	0.86
Infectious gastroenteritis	867	739	581	505	3.44
Chickenpox	194	170	150	99	0.67
Hand, foot, and mouth disease	188	254	300	255	1.73
Erythema infectiosum	37	30	39	13	0.09
Exanthem subitum	106	122	93	89	0.61
Pertussis	6	11	10	3	0.02
Herpangina	460	803	1,031	642	4.37
Mumps	100	147	87	119	0.81
Cold with exanthems by Enterovirus	39	24	28	37	0.25
Mucocutaneous Lymphnode Syndrome	1	2	2	1	0.01
Influenza	7	5	6	4	0.01
Acute hemorrhagic conjunctivitis	1	4	2	2	0.05
Epidemic keratoconjunctivitis	25	20	24	19	0.50
Bacterial meningitis	0	2	0	0	0.00
Aseptic meningitis	0	1	2	1	0.04
Mycoplasma pneumonia	3	2	3	3	0.13
Chlamydial pneumonia (excluding psittacosis)	0	0	1	0	0.00

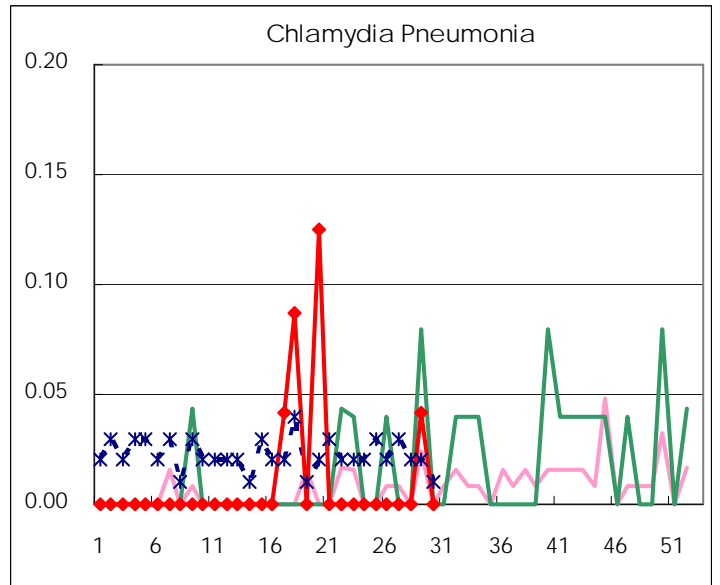
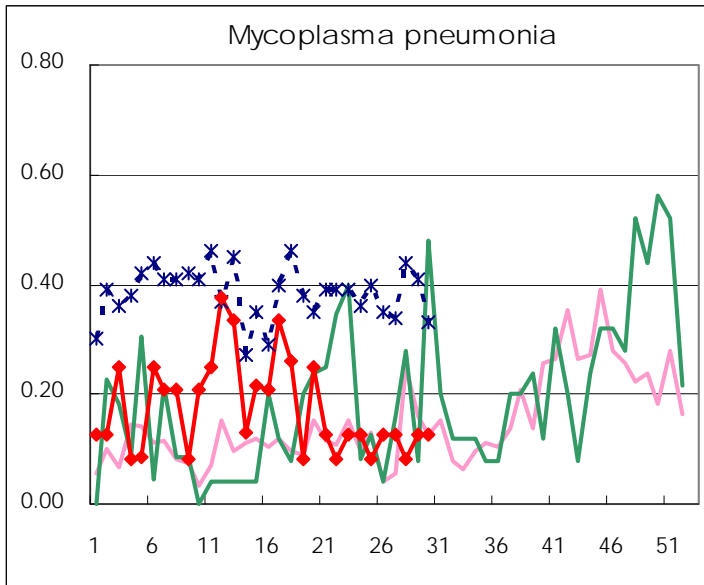
(Blank means 0.)

Disease Trend Graph (weekly reported cases per sentinel in comparison)









Number of sentinel facilities for weekly reporting		
Types of sentinels	Number of sentinels	Sentinels having reported
Pediatric	150	147
Influenza	290	285
Ophthalmic	39	38
Specially-designated	24	24

Tokyo Metropolitan Government
Infectious Disease Surveillance Center