
INFECTIOUS DISEASES WEEKLY REPORT

TOKYO IDWR

Tokyo Metropolitan Infectious Disease Surveillance Center

7 August 2008 / Number 31

Surveillance System in Tokyo, Japan

The infectious diseases which all physicians must report

All physicians must report to health centers the incidence of the diseases which are shown at page one. Health centers electronically report the individual cases to Tokyo Metropolitan Infectious Disease Surveillance Center.

The infectious diseases required to be reported by the sentinels

The numbers of patients who visit the sentinel clinics or hospitals during a week are reported to health centers in Tokyo. And they electronically report the numbers to Tokyo Metropolitan Infectious Disease Surveillance Center. We have about 400 sentinel clinics and hospitals in Tokyo.

1st Week is early January and 52nd Week is end of December.

Tokyo Metropolitan Institute of Public Health
Epidemiological Information Office

TEL:81-3-3363-3213 FAX:81-3-5332-7365

e-mail:idsc@tokyo-eiken.go.jp

URL:idsc.tokyo-eiken.go.jp/

Number of patients with the diseases which all physicians must report

Category	Diseases	Tokyo				Japan		
		28th	29th	30th	31st	Cum 2008	31st	Cum 2008
I	Ebola hemorrhagic fever					0	0	0
	Crimean-Congo hemorrhagic fever					0	0	0
	Smallpox					0	0	0
	South American hemorrhagic fever					0	0	0
	Plague					0	0	0
	Marburg disease					0	0	0
	Lassa fever					0	0	0
II	Acute poliomyelitis					0	0	1
	Tuberculosis	101	90	55	63	2461	331	15260
	Diphtheria					0	0	0
	Severe Acute Respiratory Syndrome(SARS)					0	0	0
	Avian influenza H5N1					0	0	0
III	Cholera					3	0	26
	Shigellosis	5	3	1		37	5	171
	Enterohemorrhagic Escherichia coli infection	14	13	7	13	117	229	1,784
	Typhoid fever					6	0	30
	Paratyphoid fever	1				5	0	20
IV	Hepatitis E					5	0	29
	West Nile fever					0	0	0
	Hepatitis A	1			1	19	2	110
	Echinococcosis					0	0	8
	Yellow fever					0	0	0
	Psittacosis					0	0	5
	Omsk hemorrhagic fever					0	0	0
	Relapsing fever					0	0	0
	Kyasanur forest disease					0	0	0
	Q fever					1	0	2
	Rabies					0	0	0
	Coccidioidomycosis					0	0	1
	Monkeypox					0	0	0
	Hemorrhagic fever with renal syndrome					0	0	0
	Western equine encephalitis					0	0	0
	Tick-borne encephalitis					0	0	0
	Anthrax					0	0	0
	Scrub typhus(Tsutsugamushi disease)					5	0	119
	Dengue fever	4	1			14	0	37
	Eastern equine encephalitis					0	0	0
	Avian influenza (excluding H5N1)					0	0	0
	Nipah virus infection					0	0	0
	Japanese spotted fever					0	2	26
	Japanese encephalitis					0	0	0
	Epidemic typhus					0	0	0
	Hantavirus pulmonary syndrome					0	0	0
	Herpes B virus infection					0	0	0
	Glanders					0	0	0
	Brucellosis					0	0	2
	Venezuelan equine encephalitis					0	0	0
	Hendra virus infection					0	0	0
	Botulism					0	0	0
Malaria	1	1	1		12	1	26	
Tularemia					0	0	4	
Lyme disease					0	0	3	
Lyssavirus infection(excluding rabies)					0	0	0	
Rift valley fever					0	0	0	
Melioidosis					0	0	0	
Legionellosis	1	1	1	4	45	13	494	
Leptospirosis					0	0	3	
Rocky mountain spotted fever					0	0	0	

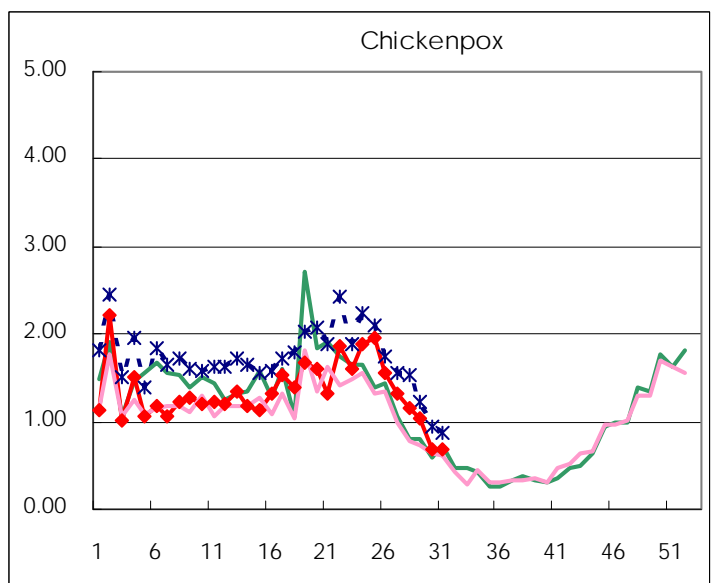
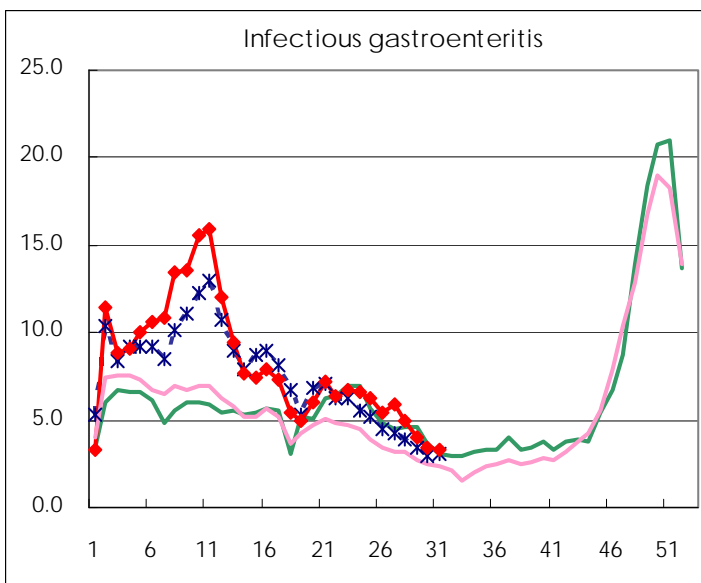
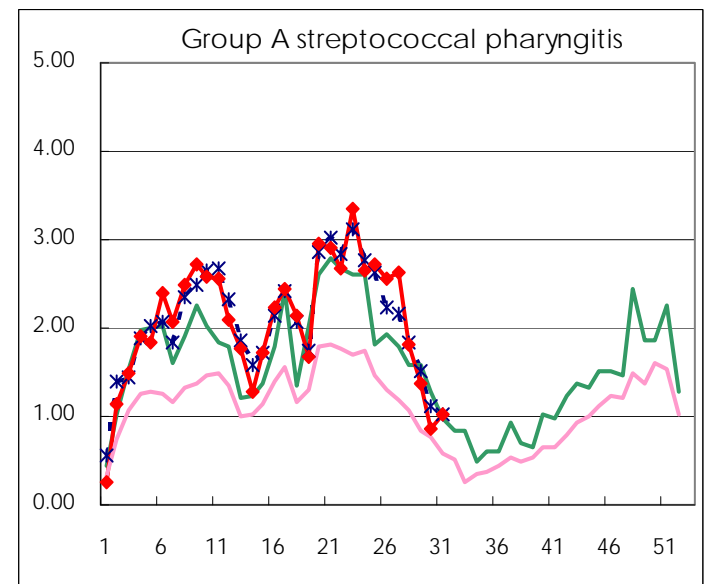
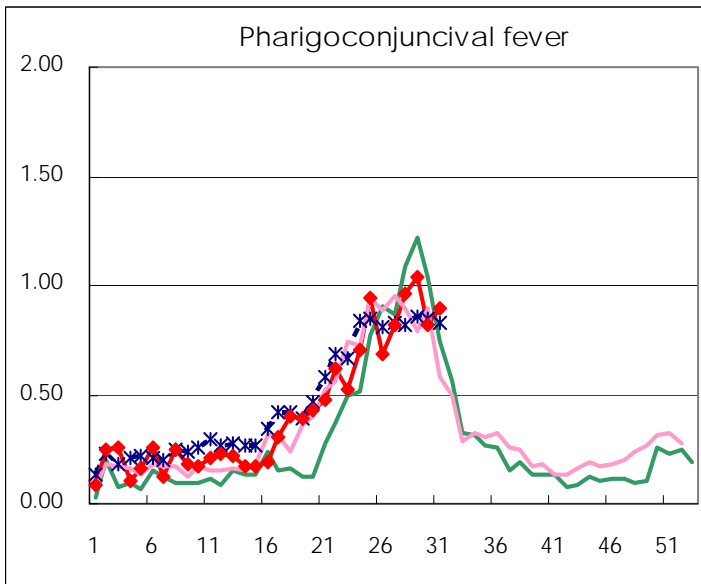
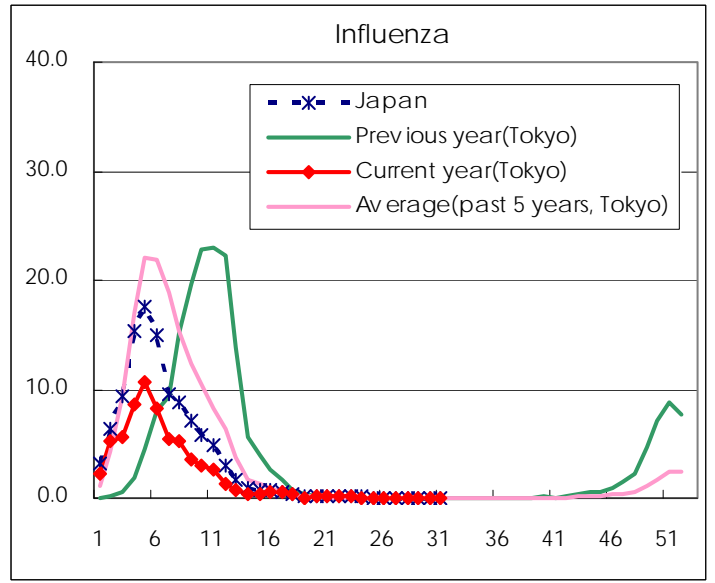
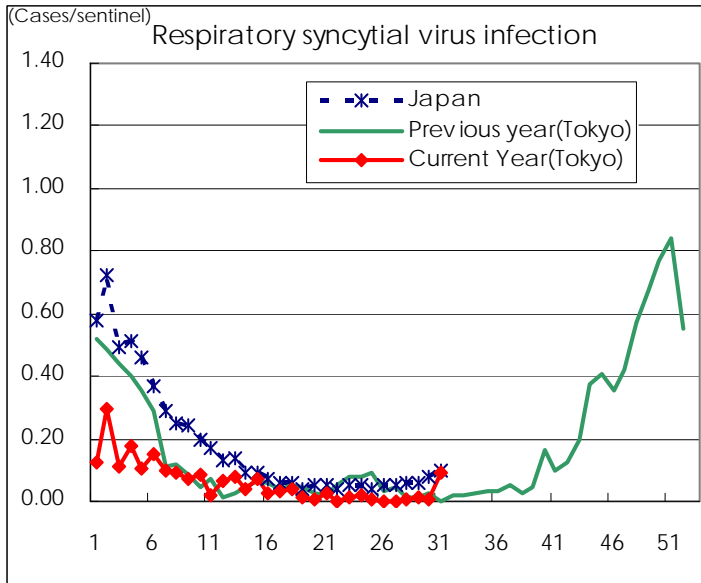
Category	Diseases	Tokyo				Japan		
		28th	29th	30th	31st	Cum 2008	31st	Cum 2008
V	Amebiasis	1	7	3	4	110	13	503
	Viral hepatitis(excluding hepatitis A and E)	4	3	1		23	3	134
	Acute encephalitis(excluding JE and WNE)					6	1	113
	Cryptosporidiosis					2	1	4
	Creutzfeldt-Jakob disease	1				11	2	95
	Severe invasive streptococcal infections(TSLS)		1			15	0	72
	Acquired immunodeficiency syndrome (AIDS)	8	16	10	12	330	15	875
	Giardiasis		2			16	2	47
	Meningococcal meningitis					2	0	10
	Congenital rubella syndrome					0	0	0
	Syphilis	5	3	4	5	119	10	481
	Tetanus		1			3	4	65
	Vancomycin-resistant S. aureus infection					0	0	0
	Vancomycin-resistant Enterococcus infection		1	1		10	0	49
	Rubella	1	2			31	4	253
Measles	17	17	14	7	1,118	50	10,521	

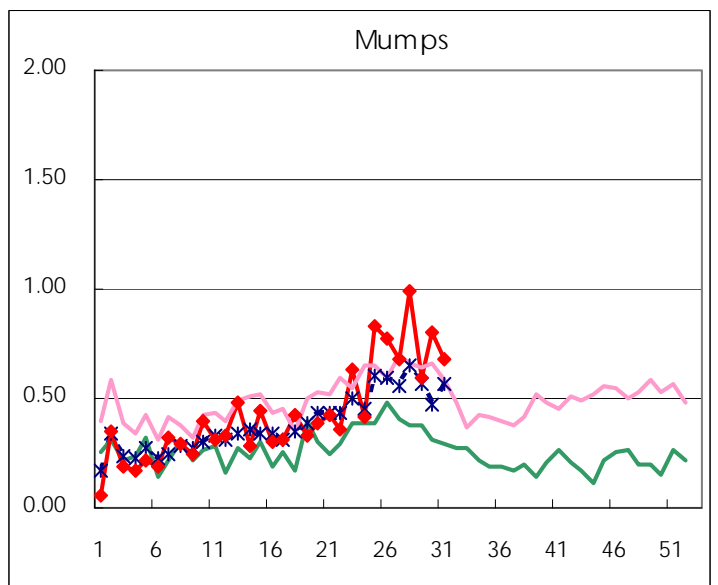
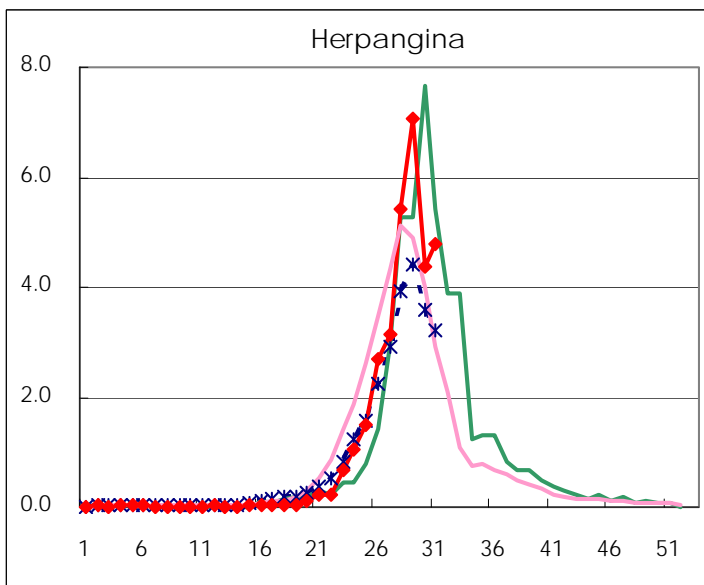
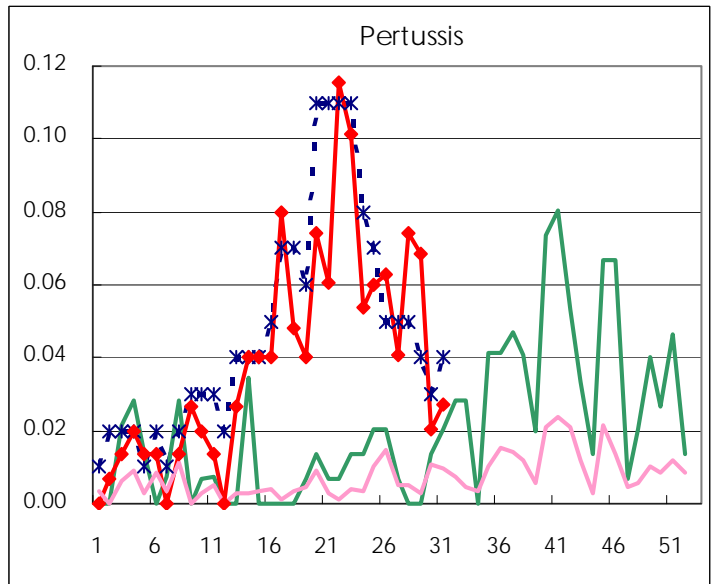
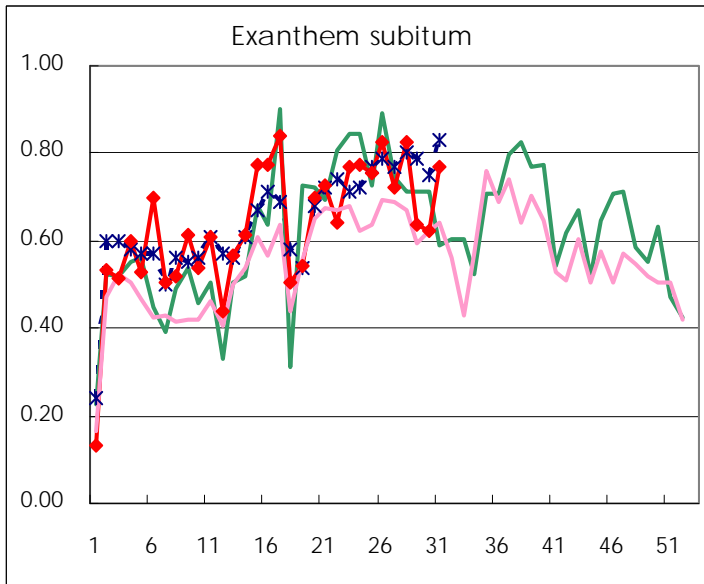
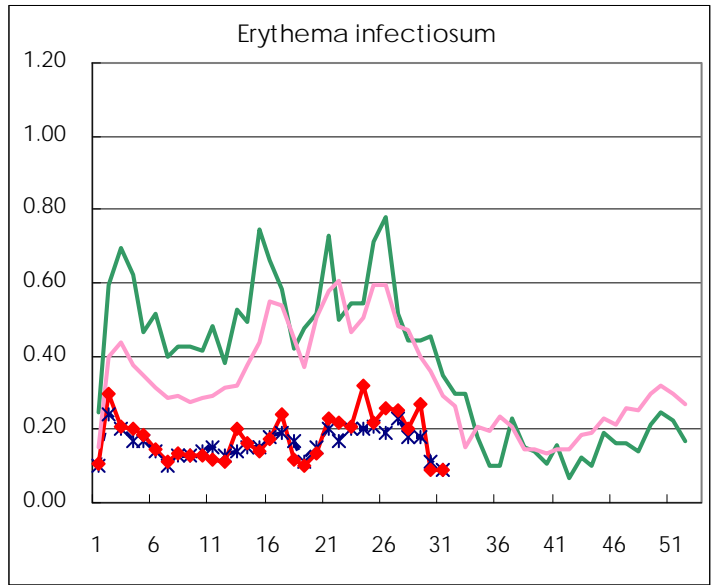
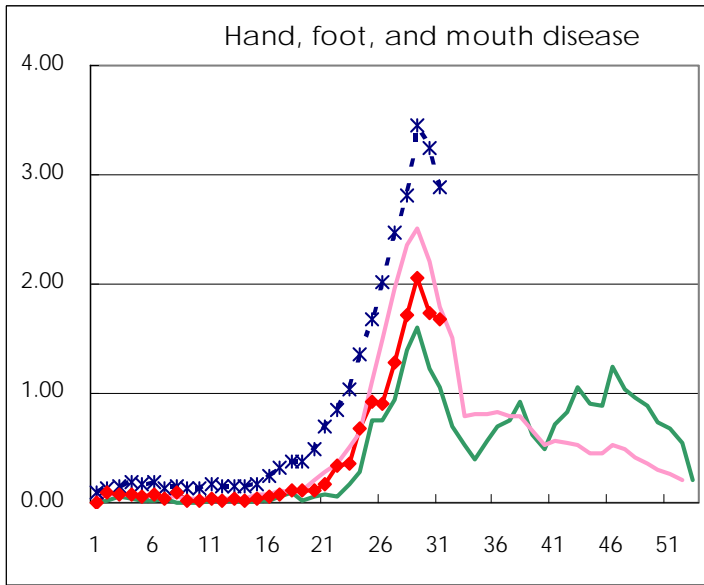
Number of patients with the diseases to be reported
by the designated clinics and hospitals

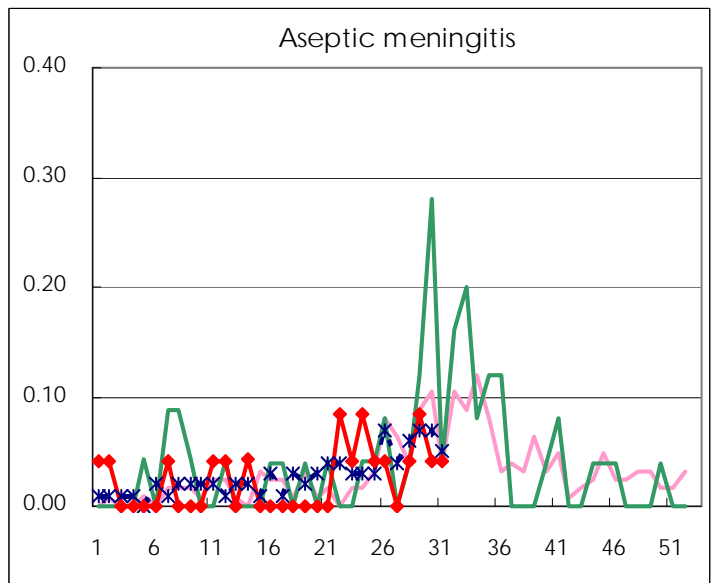
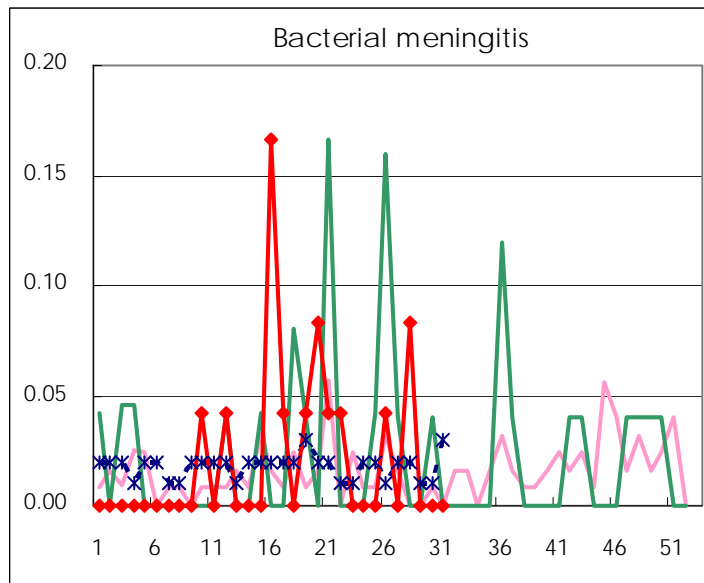
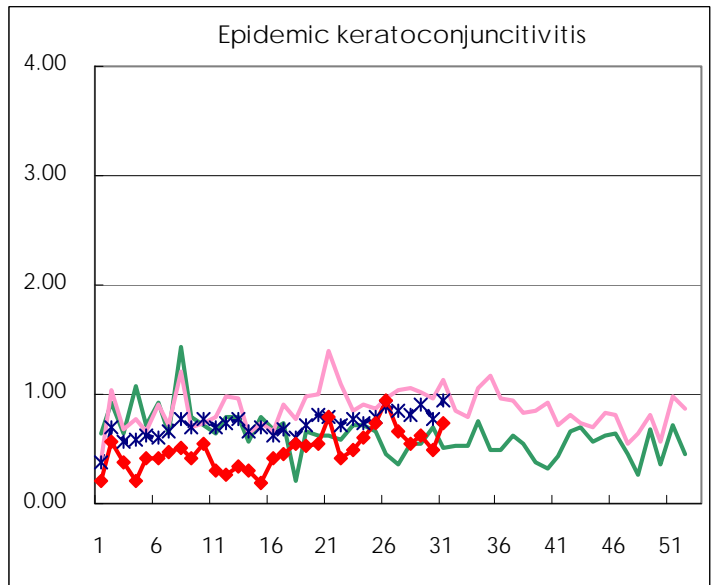
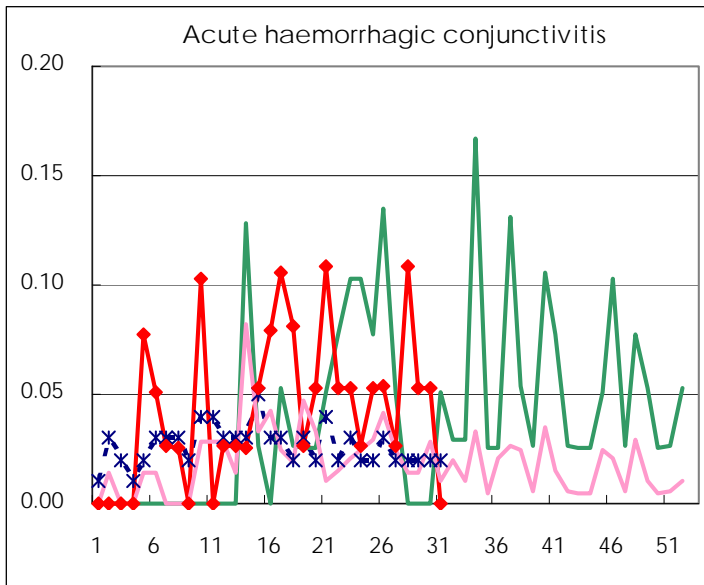
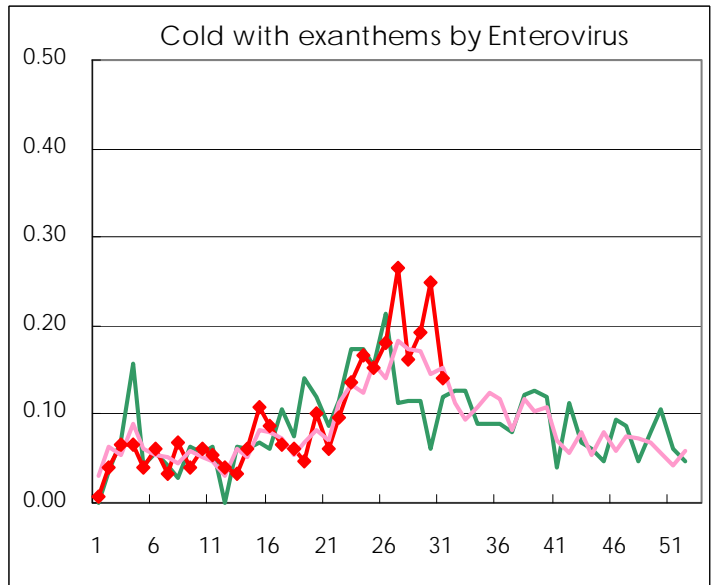
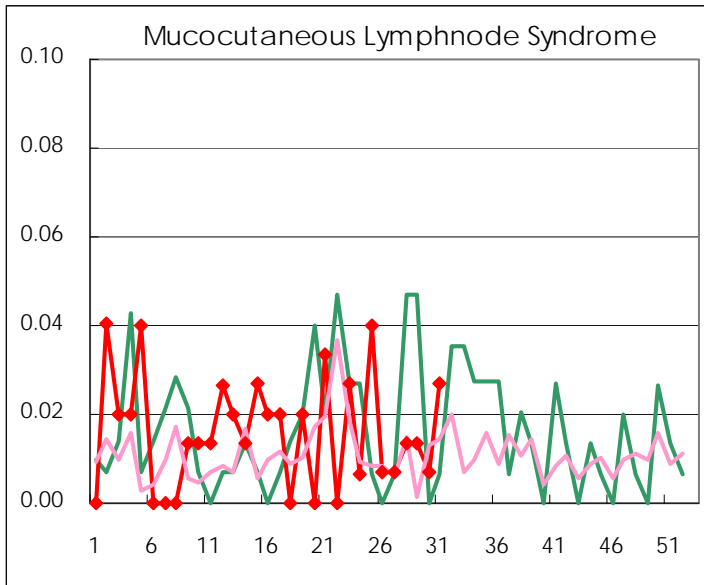
Diseases	2008				
	28th	29th	30th	31st	/sentinel
Respiratory syncytial virus infection	1	2	1	14	0.09
Pharyngoconjunctival fever	143	152	121	132	0.89
Group A streptococcal pharyngitis	270	199	129	150	1.01
Infectious gastroenteritis	739	581	505	494	3.34
Chickenpox	170	150	102	100	0.68
Hand, foot, and mouth disease	254	300	257	249	1.68
Erythema infectiosum	30	39	13	13	0.09
Exanthem subitum	122	93	92	114	0.77
Pertussis	11	10	3	4	0.03
Herpangina	803	1,031	647	709	4.79
Mumps	147	87	119	100	0.68
Cold with exanthems by Enterovirus	24	28	37	21	0.14
Mucocutaneous Lymphnode Syndrome	2	2	1	4	0.03
Influenza	5	6	4	4	0.01
Acute hemorrhagic conjunctivitis	4	2	2	0	0.00
Epidemic keratoconjunctivitis	20	24	19	27	0.73
Bacterial meningitis	2	0	0	0	0.00
Aseptic meningitis	1	2	1	1	0.04
Mycoplasma pneumonia	2	3	3	3	0.13
Chlamydial pneumonia (excluding psittacosis)	0	1	0	0	0.00

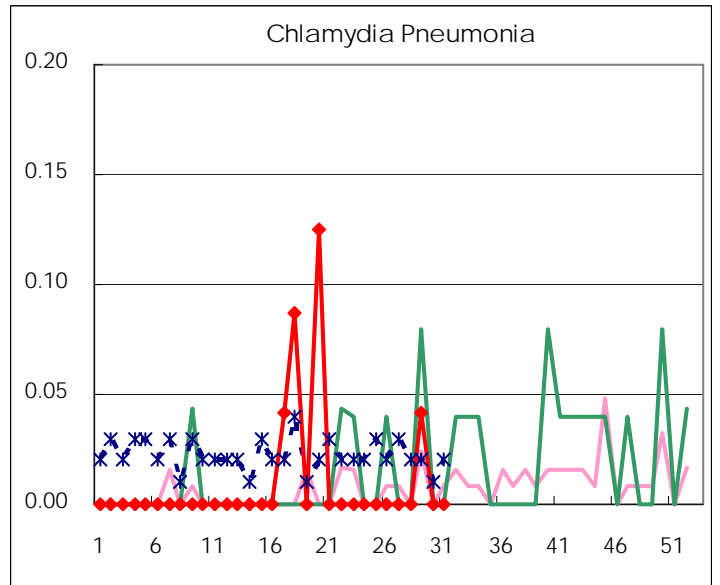
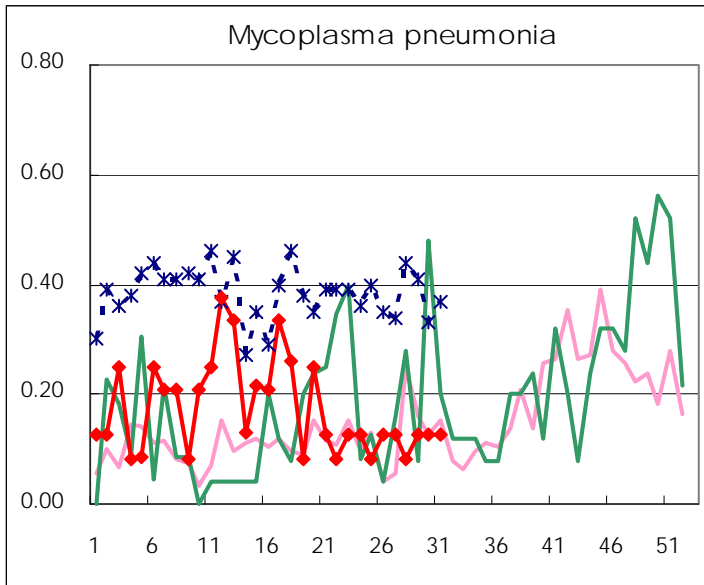
(Blank means 0.)

Disease Trend Graph (weekly reported cases per sentinel in comparison)









Number of sentinel facilities for weekly reporting		
Types of sentinels	Number of sentinels	Sentinels having reported
Pediatric	150	148
Influenza	290	286
Ophthalmic	39	37
Specially-designated	24	24

Tokyo Metropolitan Government
Infectious Disease Surveillance Center