

---

INFECTIOUS DISEASES WEEKLY REPORT

# TOKYO IDWR

Tokyo Metropolitan Infectious Disease Surveillance Center

## 14 August 2008 / Number 32

### Surveillance System in Tokyo, Japan

The infectious diseases which all physicians must report

All physicians must report to health centers the incidence of the diseases which are shown at page one. Health centers electronically report the individual cases to Tokyo Metropolitan Infectious Disease Surveillance Center.

The infectious diseases required to be reported by the sentinels

The numbers of patients who visit the sentinel clinics or hospitals during a week are reported to health centers in Tokyo. And they electronically report the numbers to Tokyo Metropolitan Infectious Disease Surveillance Center. We have about 400 sentinel clinics and hospitals in Tokyo.

1st Week is early January and 52nd Week is end of December.

Tokyo Metropolitan Institute of Public Health  
Epidemiological Information Office

TEL:81-3-3363-3213 FAX:81-3-5332-7365

e-mail:[idsc@tokyo-eiken.go.jp](mailto:idsc@tokyo-eiken.go.jp)

URL:[idsc.tokyo-eiken.go.jp/](http://idsc.tokyo-eiken.go.jp/)

---

## Number of patients with the diseases which all physicians must report

Category	Diseases	Tokyo				Japan		
		29th	30th	31st	32nd	Cum 2008	32nd	Cum 2008
I	Ebola hemorrhagic fever					0	0	0
	Crimean-Congo hemorrhagic fever					0	0	0
	Smallpox					0	0	0
	South American hemorrhagic fever					0	0	0
	Plague					0	0	0
	Marburg disease					0	0	0
	Lassa fever					0	0	0
II	Acute poliomyelitis					0	0	1
	Tuberculosis	90	55	74	69	2551	333	15825
	Diphtheria					0	0	0
	Severe Acute Respiratory Syndrome(SARS)					0	0	0
	Avian influenza H5N1					0	0	0
III	Cholera					3	5	31
	Shigellosis	3	1			37	5	178
	Enterohemorrhagic Escherichia coli infection	13	7	12	30	146	235	2,064
	Typhoid fever					6	0	30
	Paratyphoid fever					5	1	21
IV	Hepatitis E					5	2	31
	West Nile fever					0	0	0
	Hepatitis A			1	1	20	1	111
	Echinococcosis					0	0	8
	Yellow fever					0	0	0
	Psittacosis					0	0	5
	Omsk hemorrhagic fever					0	0	0
	Relapsing fever					0	0	0
	Kyasanur forest disease					0	0	0
	Q fever					1	0	2
	Rabies					0	0	0
	Coccidioidomycosis					0	0	1
	Monkeypox					0	0	0
	Hemorrhagic fever with renal syndrome					0	0	0
	Western equine encephalitis					0	0	0
	Tick-borne encephalitis					0	0	0
	Anthrax					0	0	0
	Scrub typhus(Tsutsugamushi disease)					5	0	121
	Dengue fever	1			1	15	4	41
	Eastern equine encephalitis					0	0	0
	Avian influenza (excluding H5N1)					0	0	0
	Nipah virus infection					0	0	0
	Japanese spotted fever					0	1	27
	Japanese encephalitis					0	0	0
	Epidemic typhus					0	0	0
	Hantavirus pulmonary syndrome					0	0	0
	Herpes B virus infection					0	0	0
	Glanders					0	0	
	Brucellosis					0	0	2
	Venezuelan equine encephalitis					0	0	0
	Hendra virus infection					0	0	0
	Botulism					0	0	0
Malaria	1	1			12	0	26	
Tularemia					0	0	4	
Lyme disease					0	0	3	
Lyssavirus infection(excluding rabies)					0	0	0	
Rift valley fever					0	0	0	
Melioidosis					0	0	0	
Legionellosis	1	1	4		45	21	528	
Leptospirosis					0	0	3	
Rocky mountain spotted fever					0	0	0	

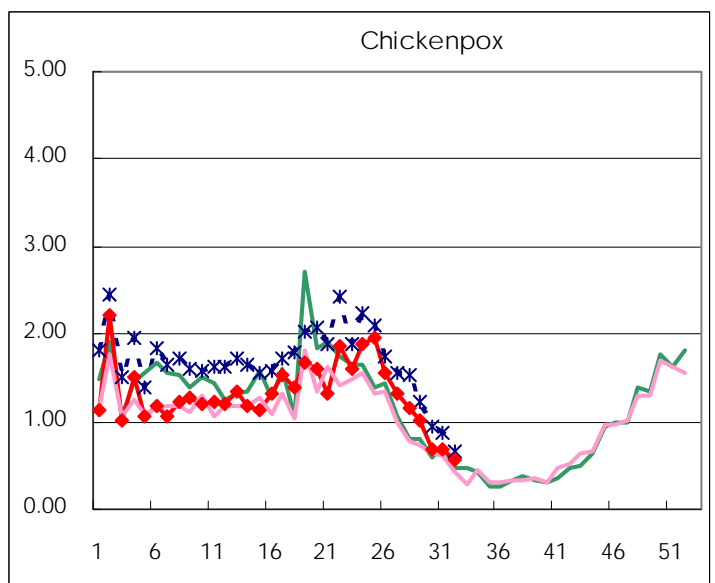
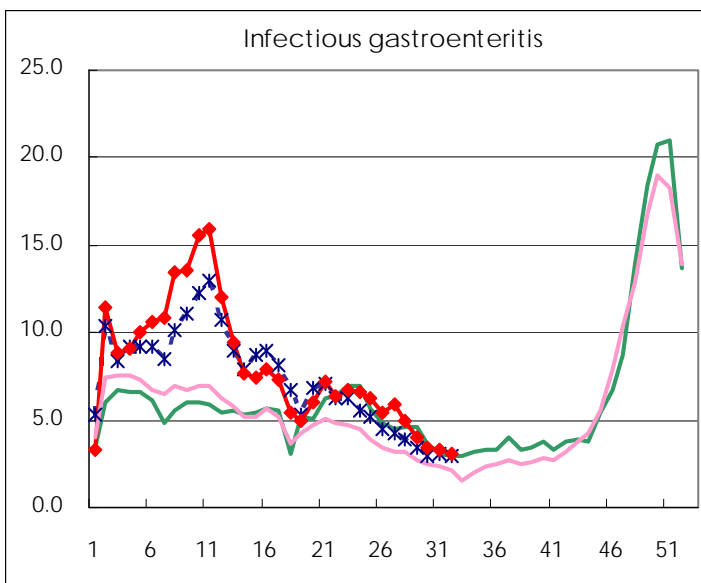
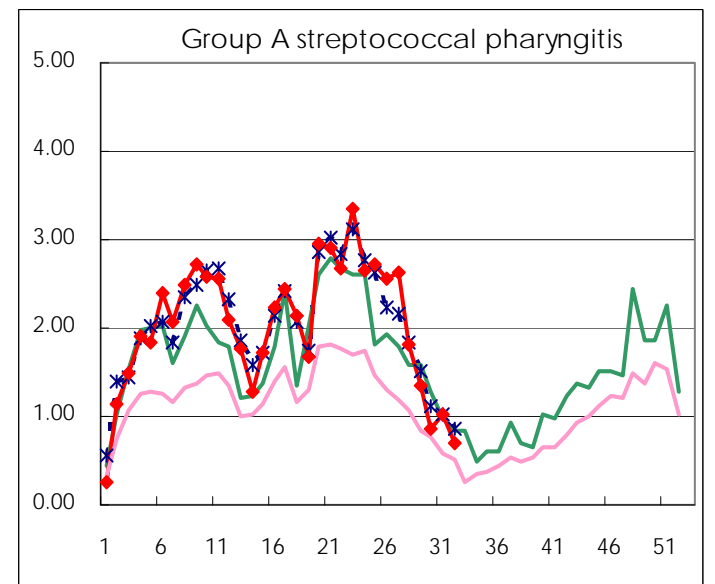
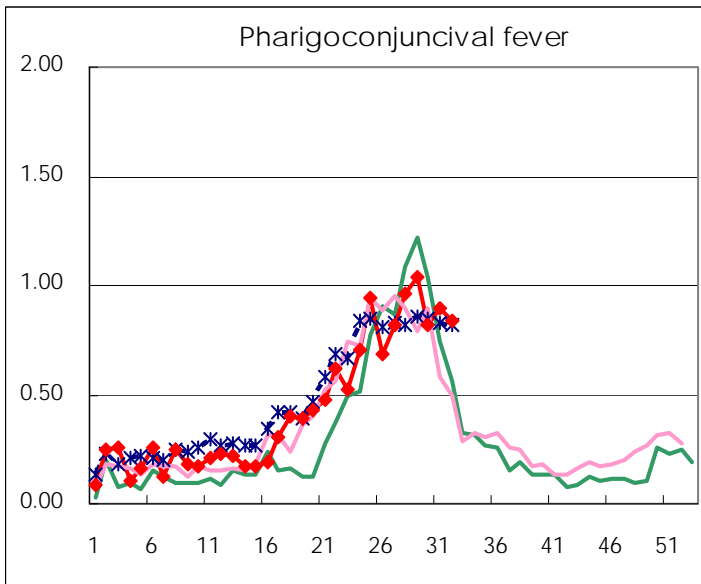
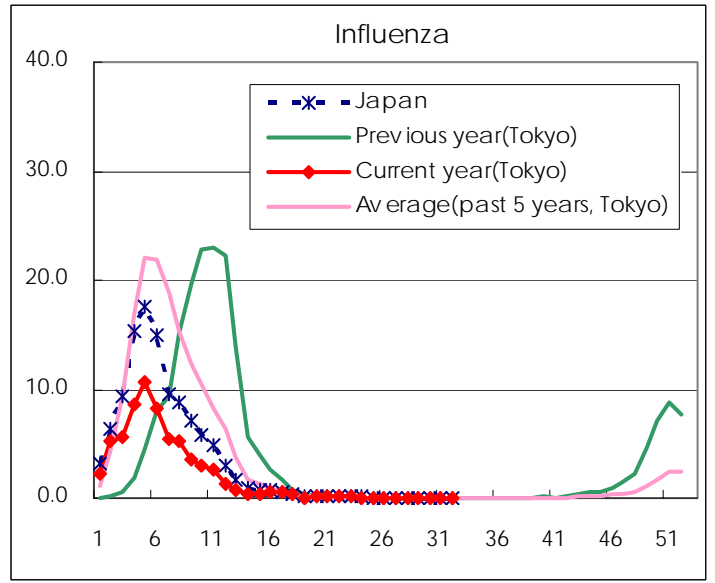
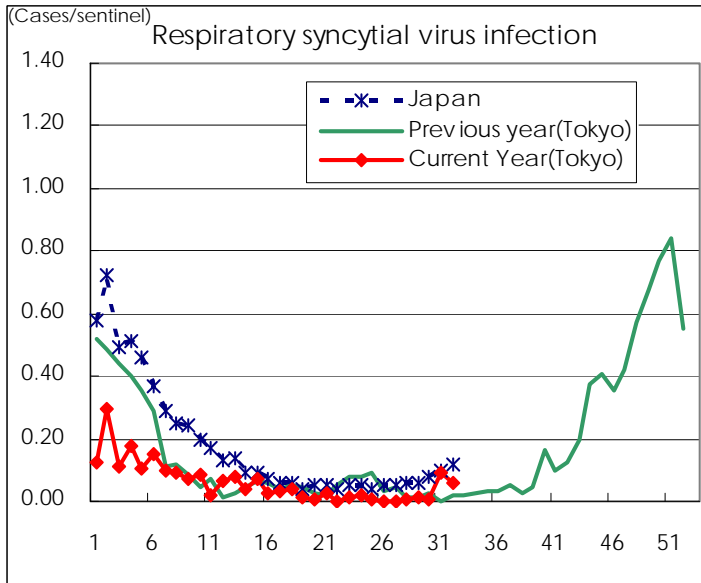
Category	Diseases	Tokyo					Japan	
		29th	30th	31st	32nd	Cum 2008	32nd	Cum 2008
V	Amebiasis	7	3	4	7	117	14	527
	Viral hepatitis(excluding hepatitis A and E)	3	1			23	3	139
	Acute encephalitis(excluding JE and WNE)				1	7	2	118
	Cryptosporidiosis					2	0	4
	Creutzfeldt-Jakob disease					11	2	98
	Severe invasive streptococcal infections(TSLS)	1				15	1	73
	Acquired immunodeficiency syndrome (AIDS)	16	10	13	8	339	18	901
	Giardiasis	2				16	0	49
	Meningococcal meningitis					2	0	10
	Congenital rubella syndrome					0	0	0
	Syphilis	3	4	5	3	122	6	496
	Tetanus	1			1	4	1	67
	Vancomycin-resistant S. aureus infection					0	0	0
	Vancomycin-resistant Enterococcus infection	1	1			10	3	53
	Rubella	2			1	32	2	258
Measles	17	14	7	5	1,123	33	10,585	

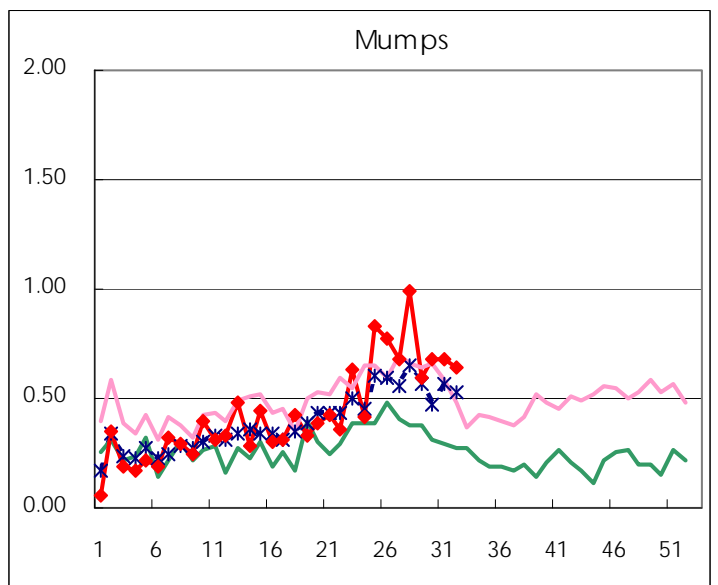
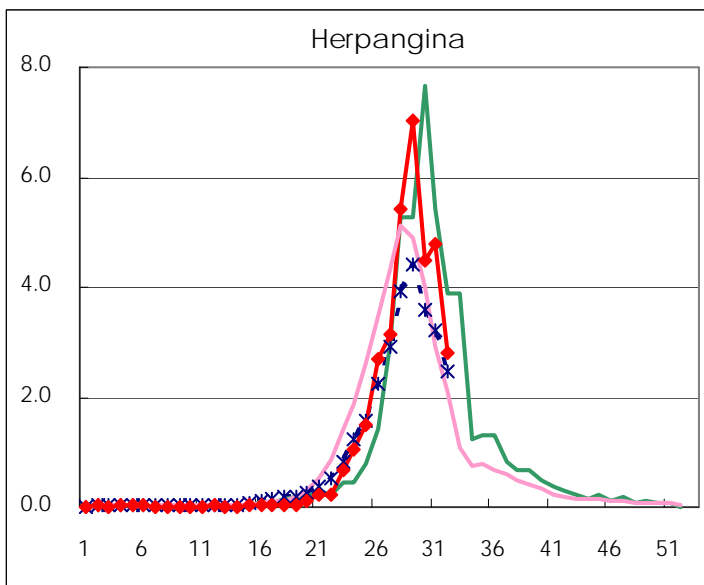
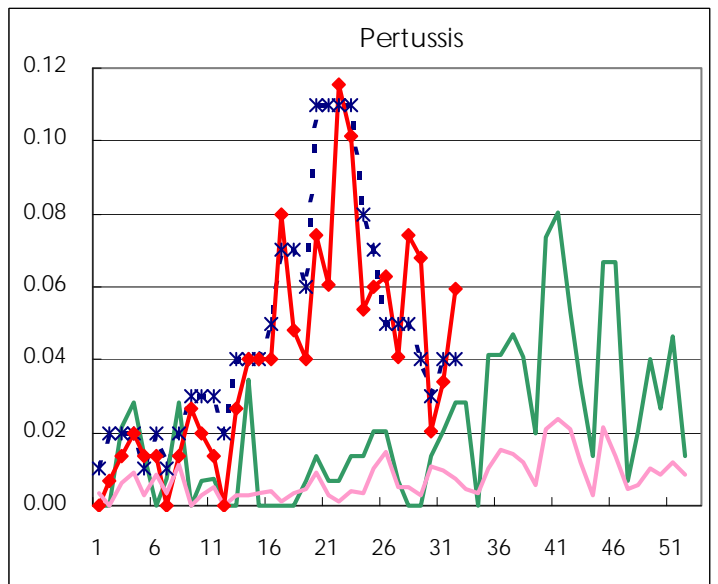
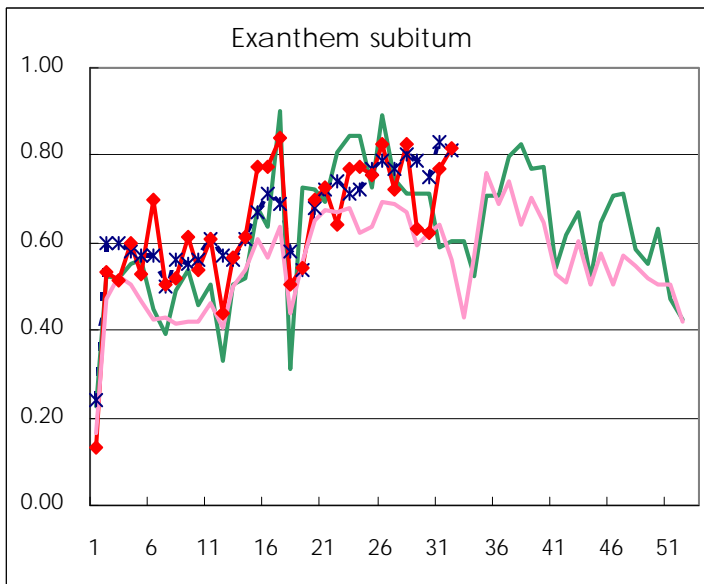
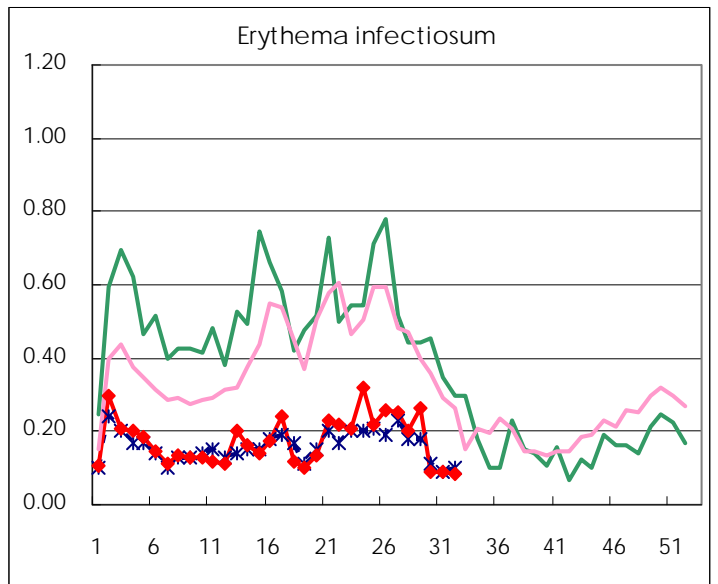
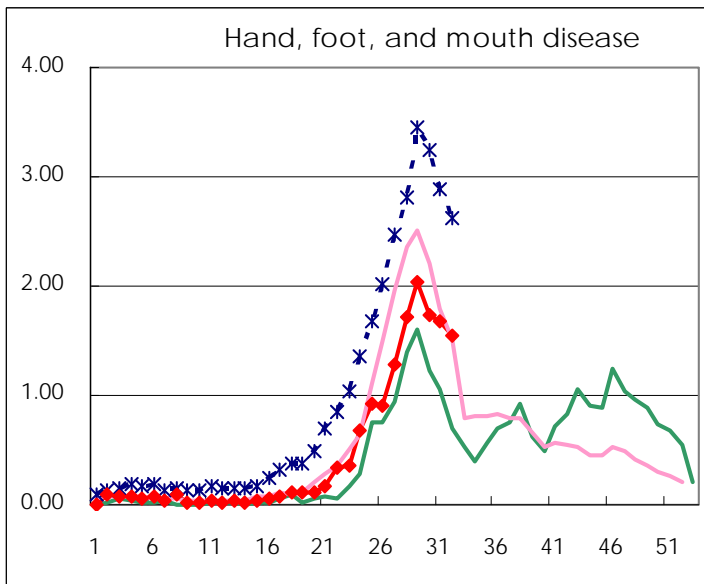
Number of patients with the diseases to be reported  
by the designated clinics and hospitals

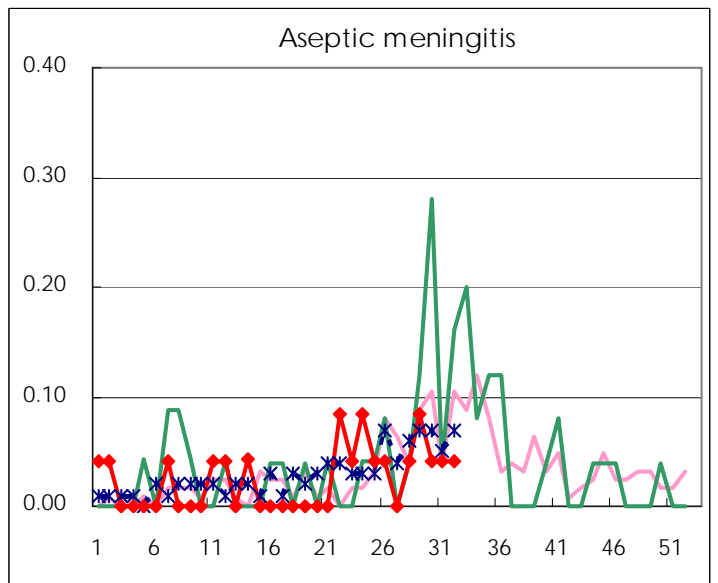
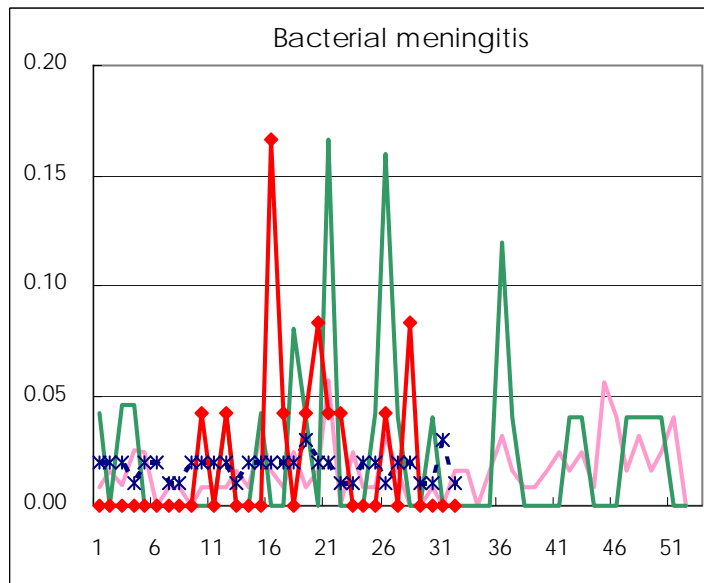
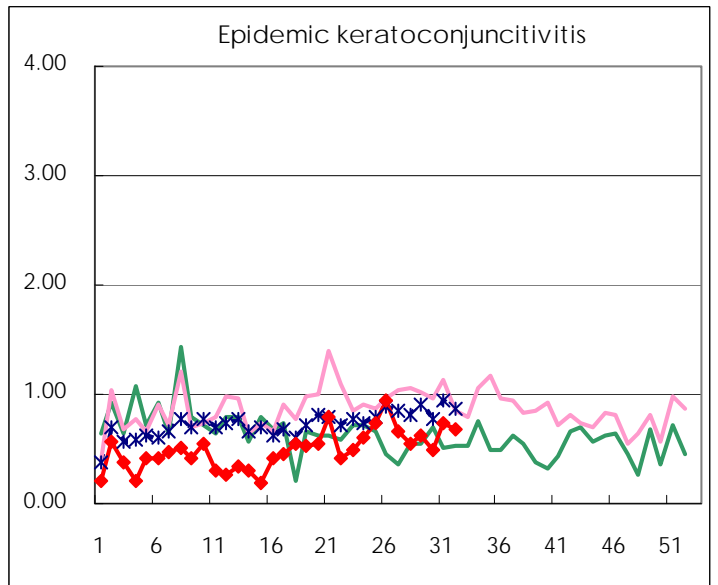
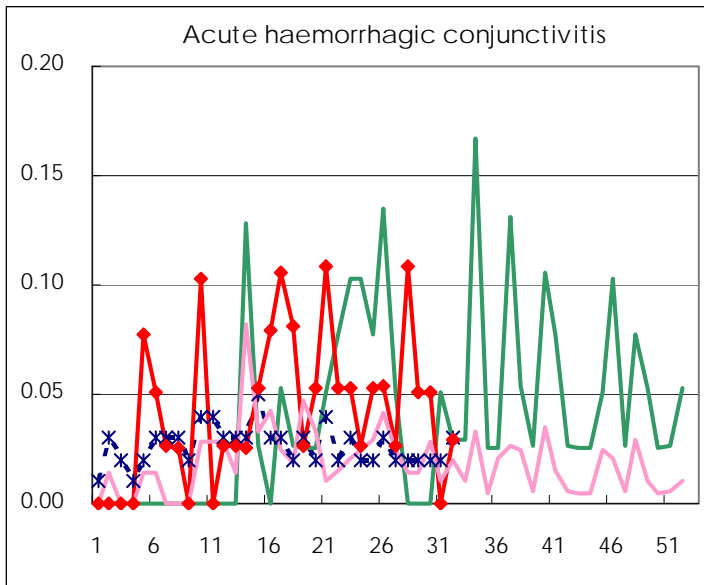
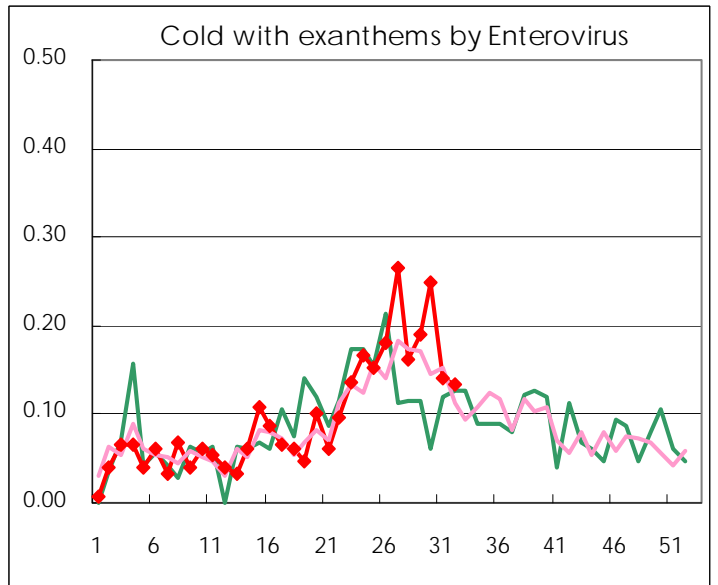
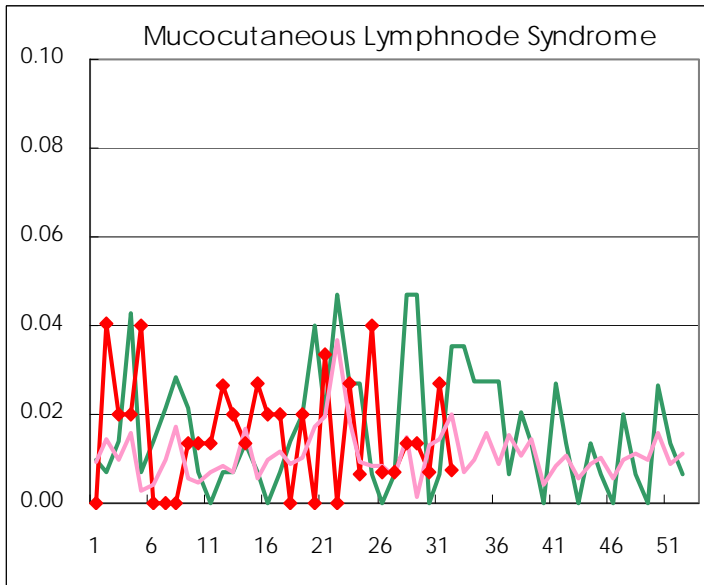
Diseases	2008					
	29th	30th	31st	32nd	/sentinel	
Respiratory syncytial virus infection	2	1	14	8	0.06	
Pharyngoconjunctival fever	152	121	132	113	0.84	
Group A streptococcal pharyngitis	199	129	150	93	0.69	
Infectious gastroenteritis	581	505	494	418	3.10	
Chickenpox	150	102	100	77	0.57	
Hand, foot, and mouth disease	300	257	249	209	1.55	
Erythema infectiosum	39	13	13	11	0.08	
Exanthem subitum	93	92	114	110	0.81	
Pertussis	10	3	5	8	0.06	
Herpangina	1,032	666	709	376	2.79	
Mumps	87	100	100	87	0.64	
Cold with exanthems by Enterovirus	28	37	21	18	0.13	
Mucocutaneous Lymphnode Syndrome	2	1	4	1	0.01	
Influenza	6	4	4	5	0.02	
Acute hemorrhagic conjunctivitis	2	2	0	1	0.03	
Epidemic keratoconjunctivitis	24	19	27	23	0.68	
Bacterial meningitis	0	0	0	0	0.00	
Aseptic meningitis	2	1	1	1	0.04	
Mycoplasma pneumonia	3	3	3	3	0.13	
Chlamydial pneumonia (excluding psittacosis)	1	0	0	0	0.00	

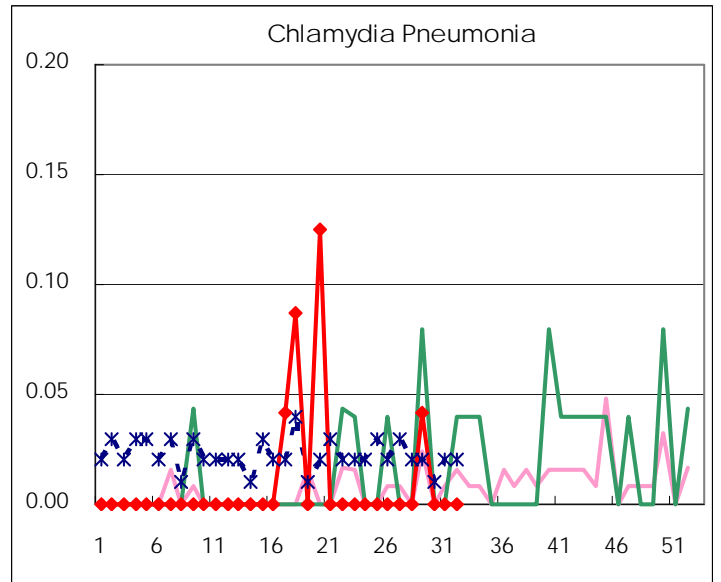
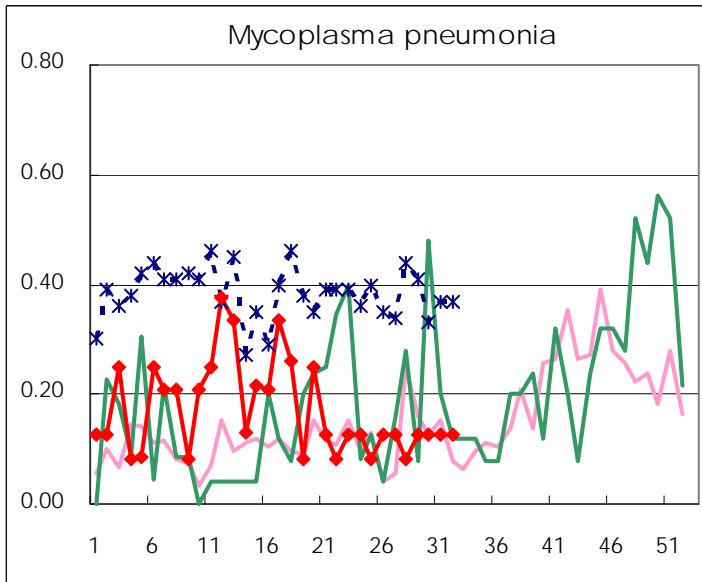
( Blank means 0. )

# Disease Trend Graph (weekly reported cases per sentinel in comparison)









Number of sentinel facilities for weekly reporting		
Types of sentinels	Number of sentinels	Sentinels having reported
Pediatric	150	135
Influenza	290	261
Ophthalmic	39	34
Specially-designated	24	24

Tokyo Metropolitan Government  
**Infectious Disease Surveillance Center**