

---

INFECTIOUS DISEASES WEEKLY REPORT

# TOKYO IDWR

Tokyo Metropolitan Infectious Disease Surveillance Center

## 21 August 2008 / Number 33

### Surveillance System in Tokyo, Japan

The infectious diseases which all physicians must report

All physicians must report to health centers the incidence of the diseases which are shown at page one. Health centers electronically report the individual cases to Tokyo Metropolitan Infectious Disease Surveillance Center.

The infectious diseases required to be reported by the sentinels

The numbers of patients who visit the sentinel clinics or hospitals during a week are reported to health centers in Tokyo. And they electronically report the numbers to Tokyo Metropolitan Infectious Disease Surveillance Center. We have about 400 sentinel clinics and hospitals in Tokyo.

1st Week is early January and 52nd Week is end of December.

Tokyo Metropolitan Institute of Public Health  
Epidemiological Information Office

TEL:81-3-3363-3213 FAX:81-3-5332-7365

e-mail:[idsc@tokyo-eiken.go.jp](mailto:idsc@tokyo-eiken.go.jp)

URL:[idsc.tokyo-eiken.go.jp/](http://idsc.tokyo-eiken.go.jp/)

---

## Number of patients with the diseases which all physicians must report

Category	Diseases	Tokyo				Japan		
		30th	31st	32nd	33rd	Cum 2008	33rd	Cum 2008
I	Ebola hemorrhagic fever					0	0	0
	Crimean-Congo hemorrhagic fever					0	0	0
	Smallpox					0	0	0
	South American hemorrhagic fever					0	0	0
	Plague					0	0	0
	Marburg disease					0	0	0
	Lassa fever					0	0	0
II	Acute poliomyelitis					0	0	1
	Tuberculosis	62	89	88	76	2671	293	16636
	Diphtheria					0	0	0
	Severe Acute Respiratory Syndrome(SARS)					0	0	0
	Avian influenza H5N1					0	0	0
III	Cholera			1		4	1	33
	Shigellosis	1		1		38	4	183
	Enterohemorrhagic Escherichia coli infection	7	14	31	49	198	216	2,310
	Typhoid fever					6	0	30
	Paratyphoid fever					5	1	22
IV	Hepatitis E				1	6	0	32
	West Nile fever					0	0	0
	Hepatitis A		1	1		20	3	117
	Echinococcosis					0	0	8
	Yellow fever					0	0	0
	Psittacosis					0	0	5
	Omsk hemorrhagic fever					0	0	0
	Relapsing fever					0	0	0
	Kyasanur forest disease					0	0	0
	Q fever					1	0	2
	Rabies					0	0	0
	Coccidioidomycosis					0	1	2
	Monkeypox					0	0	0
	Hemorrhagic fever with renal syndrome					0	0	0
	Western equine encephalitis					0	0	0
	Tick-borne encephalitis					0	0	0
	Anthrax					0	0	0
	Scrub typhus(Tsutsugamushi disease)					5	0	121
	Dengue fever			1	1	16	3	45
	Eastern equine encephalitis					0	0	0
	Avian influenza (excluding H5N1)					0	0	0
	Nipah virus infection					0	0	0
	Japanese spotted fever					0	6	34
	Japanese encephalitis					0	0	0
	Epidemic typhus					0	0	0
	Hantavirus pulmonary syndrome					0	0	0
	Herpes B virus infection					0	0	0
	Glanders					0	0	
	Brucellosis					0	0	2
	Venezuelan equine encephalitis					0	0	0
	Hendra virus infection					0	0	0
	Botulism					0	0	0
Malaria	1				12	0	26	
Tularemia					0	0	4	
Lyme disease					0	0	3	
Lyssavirus infection(excluding rabies)					0	0	0	
Rift valley fever					0	0	0	
Melioidosis					0	0	0	
Legionellosis	1	4		1	46	13	543	
Leptospirosis					0	1	4	
Rocky mountain spotted fever					0	0	0	

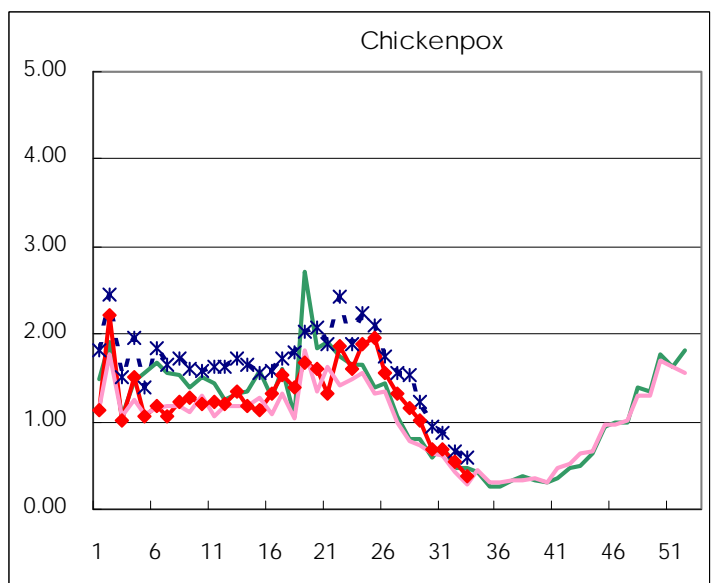
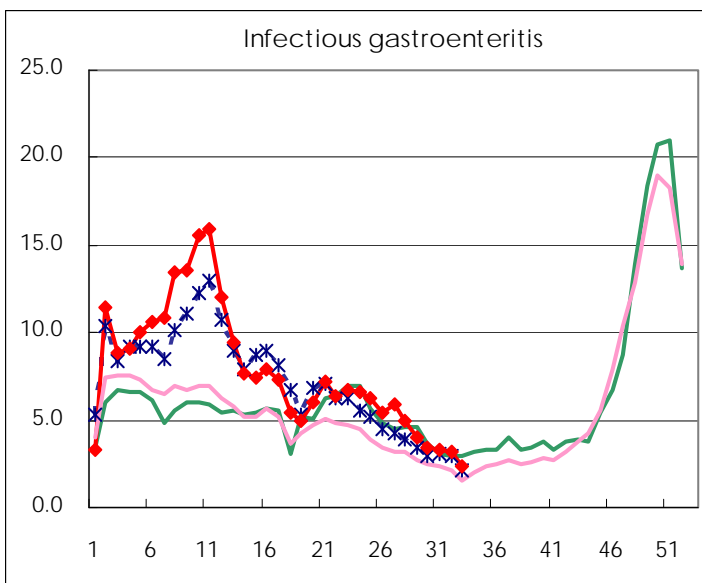
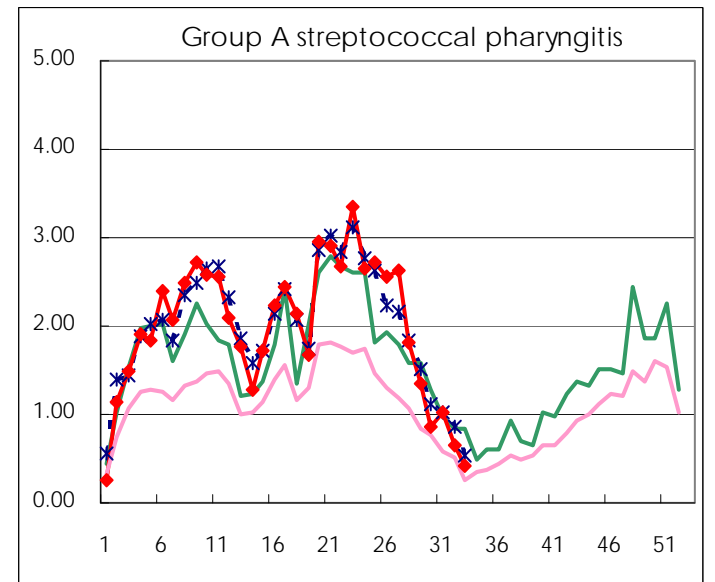
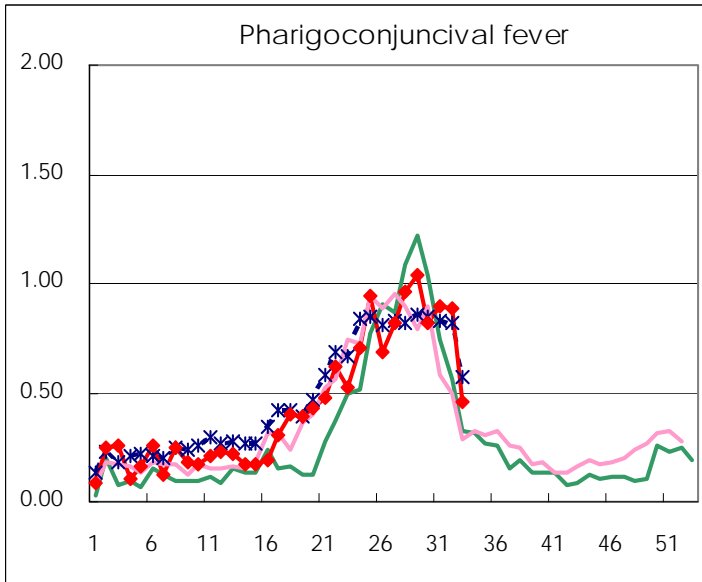
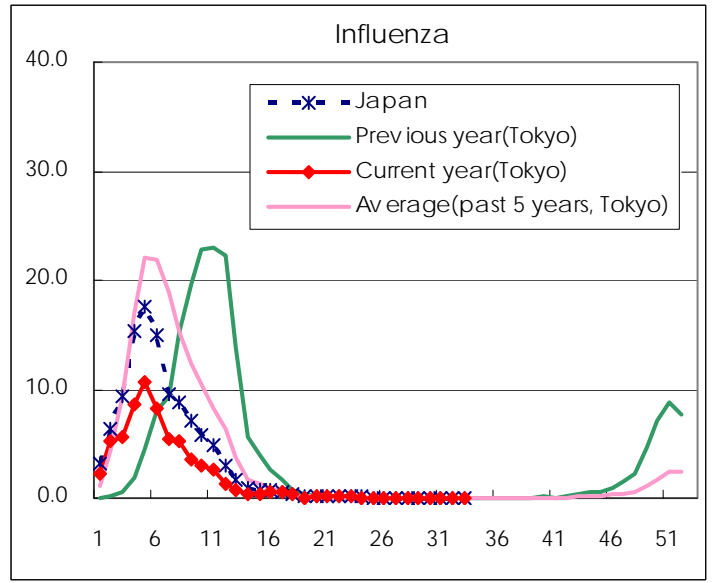
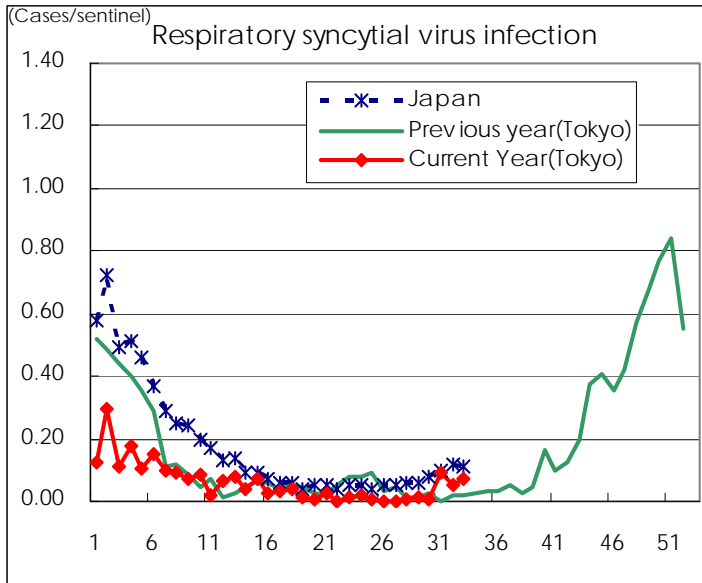
Category	Diseases	Tokyo					Japan	
		30th	31st	32nd	33rd	Cum 2008	33rd	Cum 2008
V	Amebiasis	3	4	7	6	123	10	545
	Viral hepatitis(excluding hepatitis A and E)	1				23	4	148
	Acute encephalitis(excluding JE and WNE)			1		7	1	121
	Cryptosporidiosis					2	1	5
	Creutzfeldt-Jakob disease					11	2	102
	Severe invasive streptococcal infections(TSLS)				1	16	1	77
	Acquired immunodeficiency syndrome (AIDS)	10	13	8	8	347	22	944
	Giardiasis				1	17	2	53
	Meningococcal meningitis					2	0	10
	Congenital rubella syndrome					0	0	0
	Syphilis	4	5	3	3	125	10	510
	Tetanus			1		4	2	70
	Vancomycin-resistant S. aureus infection					0	0	0
	Vancomycin-resistant Enterococcus infection	1				10	2	54
	Rubella			1	3	35	2	261
Measles	14	7	5	4	1,127	32	10,635	

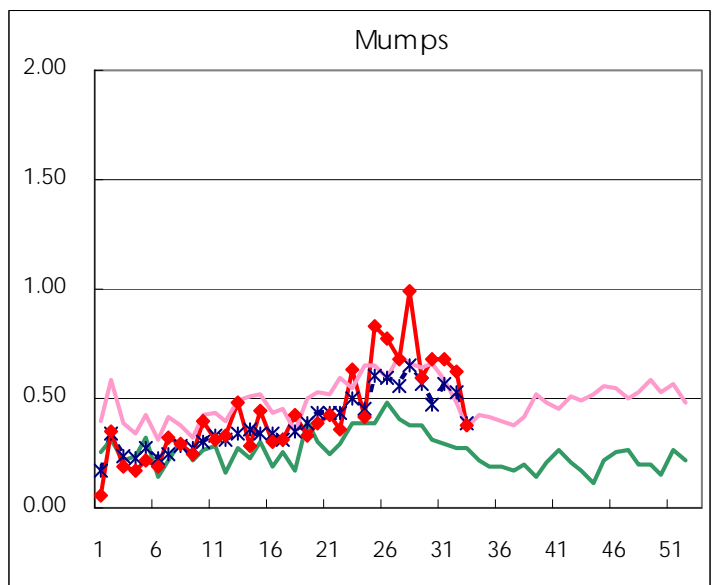
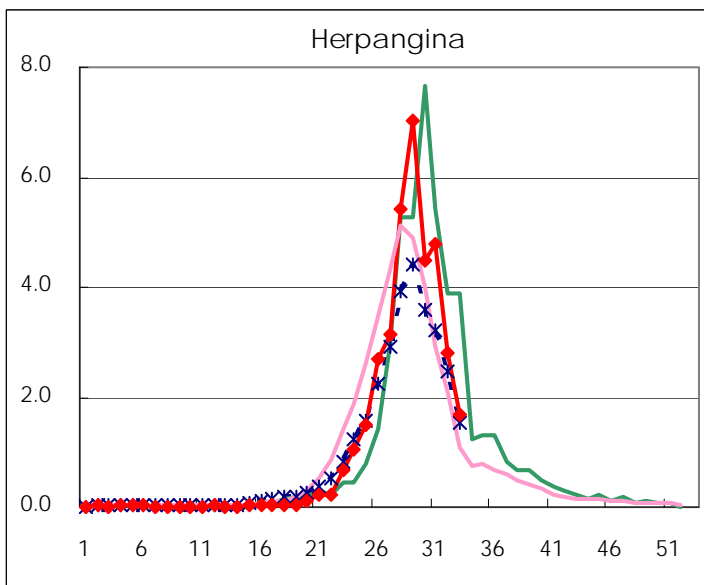
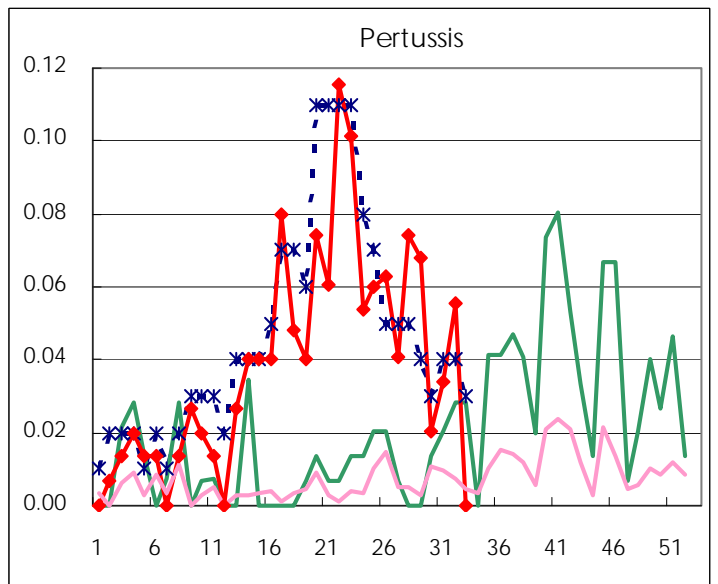
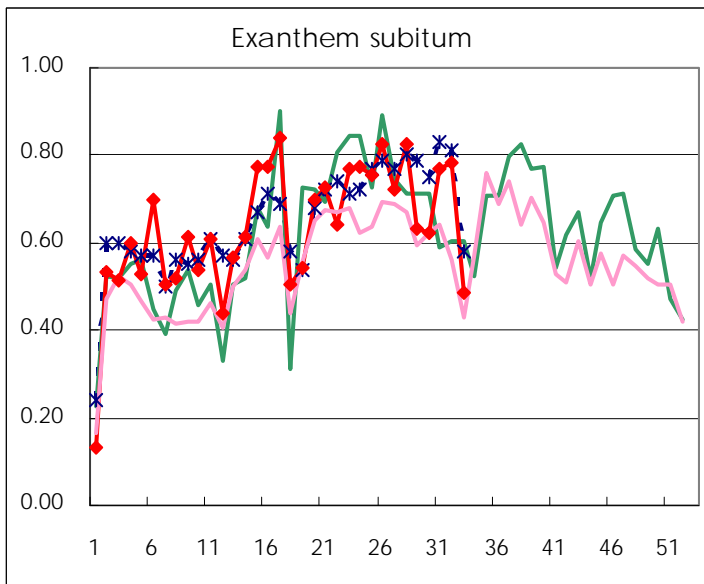
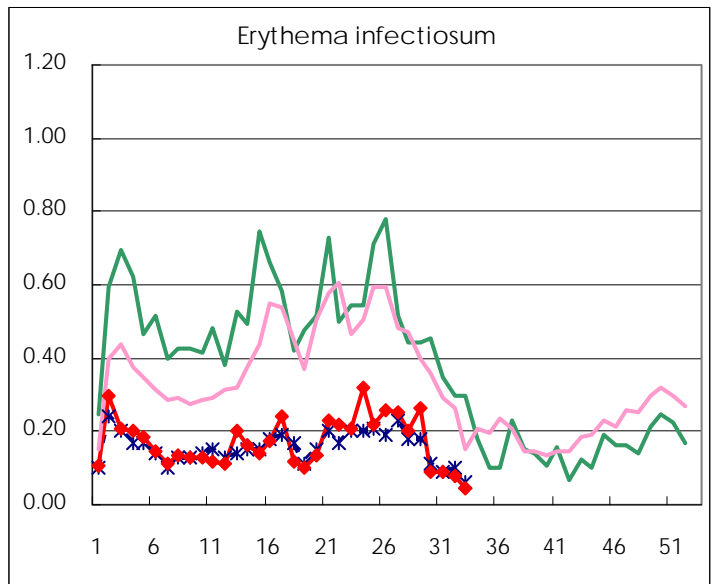
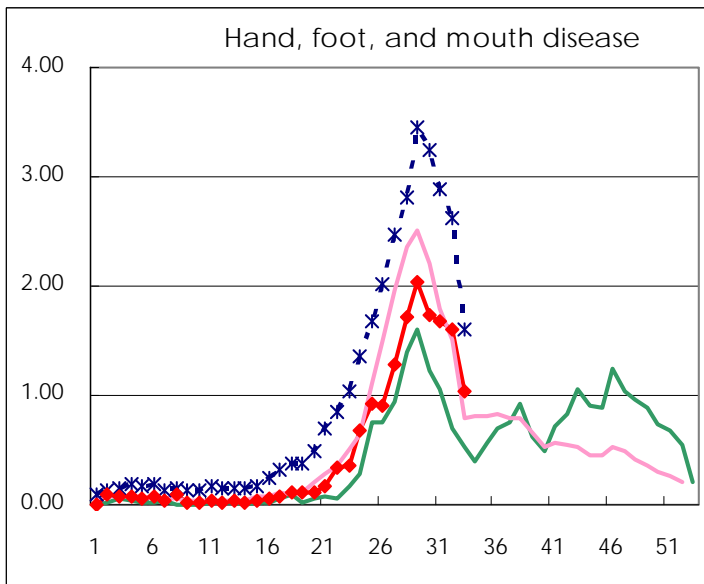
Number of patients with the diseases to be reported  
by the designated clinics and hospitals

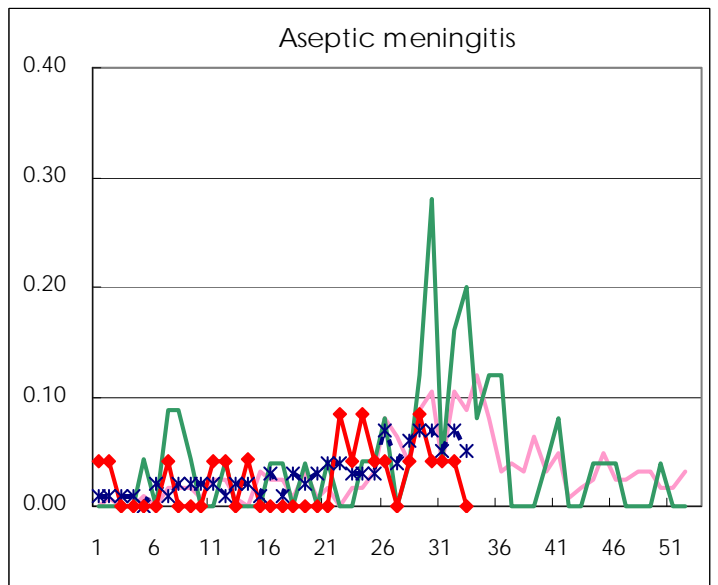
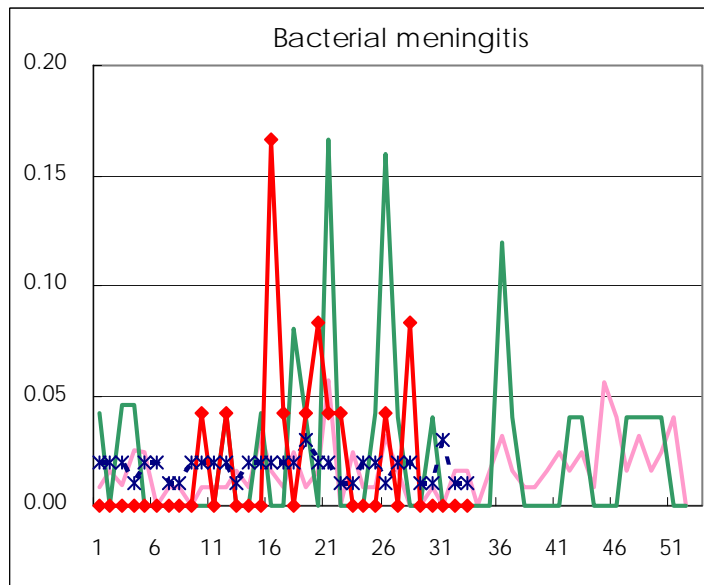
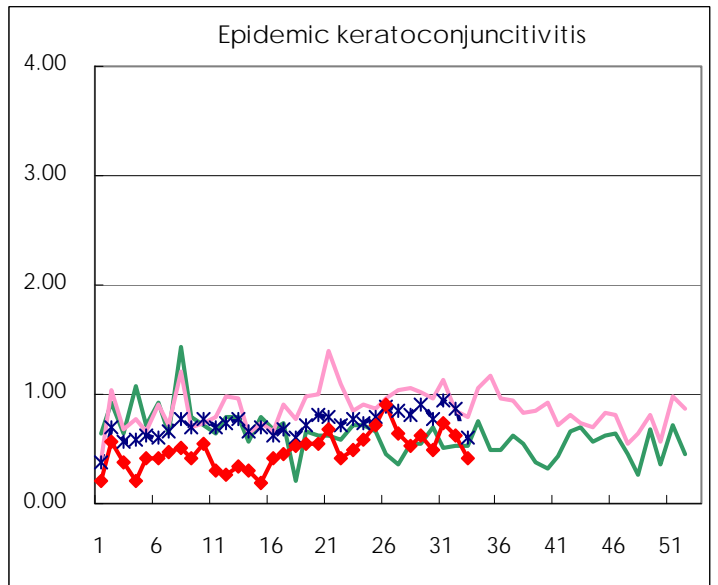
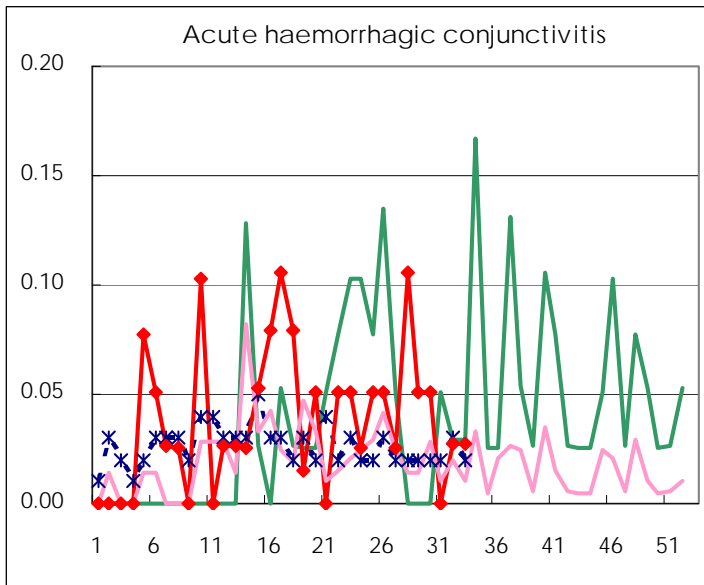
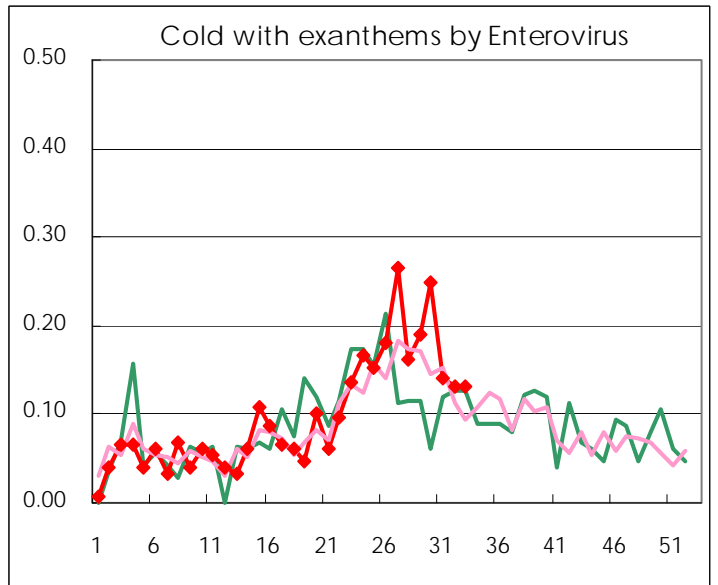
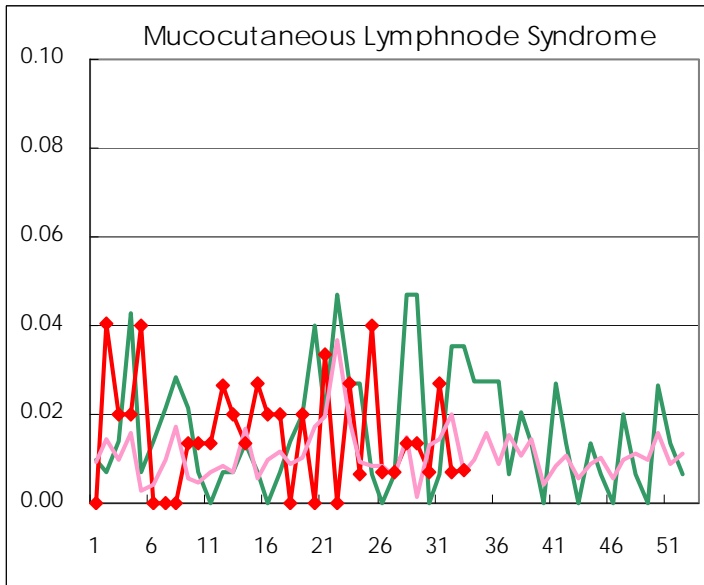
Diseases	2008				
	30th	31st	32nd	33rd	/sentinel
Respiratory syncytial virus infection	1	14	8	10	0.07
Pharyngoconjunctival fever	121	132	128	62	0.46
Group A streptococcal pharyngitis	129	150	95	57	0.42
Infectious gastroenteritis	505	494	455	315	2.32
Chickenpox	102	100	79	52	0.38
Hand, foot, and mouth disease	257	249	230	142	1.04
Erythema infectiosum	13	13	11	6	0.04
Exanthem subitum	92	114	113	66	0.49
Pertussis	3	5	8	0	0.00
Herpangina	666	709	404	227	1.67
Mumps	100	100	89	51	0.38
Cold with exanthems by Enterovirus	37	21	19	18	0.13
Mucocutaneous Lymphnode Syndrome	1	4	1	1	0.01
Influenza	4	4	5	0	0.00
Acute hemorrhagic conjunctivitis	2	0	1	1	0.03
Epidemic keratoconjunctivitis	19	27	23	15	0.42
Bacterial meningitis	0	0	0	0	0.00
Aseptic meningitis	1	1	1	0	0.00
Mycoplasma pneumonia	3	3	3	2	0.09
Chlamydial pneumonia (excluding psittacosis)	0	0	0	0	0.00

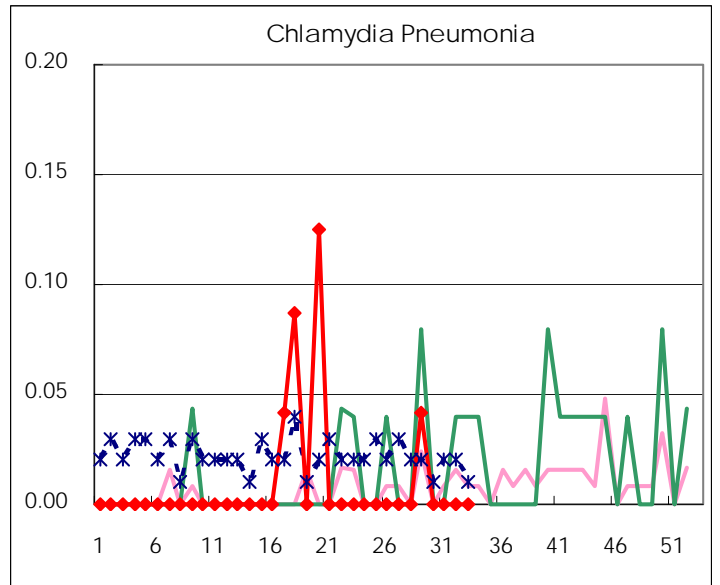
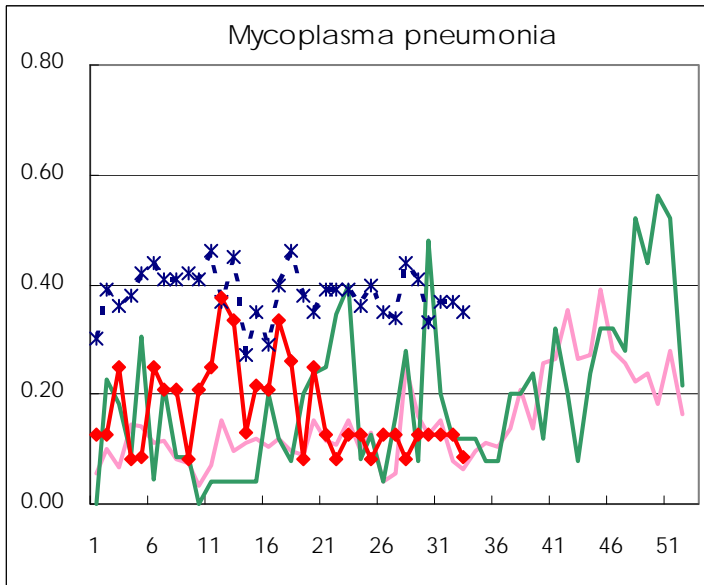
( Blank means 0. )

# Disease Trend Graph (weekly reported cases per sentinel in comparison)









Number of sentinel facilities for weekly reporting		
Types of sentinels	Number of sentinels	Sentinels having reported
Pediatric	150	136
Influenza	290	266
Ophthalmic	39	36
Specially-designated	24	23

Tokyo Metropolitan Government  
**Infectious Disease Surveillance Center**