
INFECTIOUS DISEASES WEEKLY REPORT

TOKYO iDWR

Tokyo Metropolitan Infectious Disease Surveillance Center

28 August 2008 / Number 34

Surveillance System in Tokyo, Japan

The infectious diseases which all physicians must report

All physicians must report to health centers the incidence of the diseases which are shown at page one. Health centers electronically report the individual cases to Tokyo Metropolitan Infectious Disease Surveillance Center.

The infectious diseases required to be reported by the sentinels

The numbers of patients who visit the sentinel clinics or hospitals during a week are reported to health centers in Tokyo. And they electronically report the numbers to Tokyo Metropolitan Infectious Disease Surveillance Center. We have about 400 sentinel clinics and hospitals in Tokyo.

1st Week is early January and 52nd Week is end of December.

Tokyo Metropolitan Institute of Public Health
Epidemiological Information Office

TEL:81-3-3363-3213 FAX:81-3-5332-7365

e-mail:idsc@tokyo-eiken.go.jp

URL:idsc.tokyo-eiken.go.jp/

Number of patients with the diseases which all physicians must report

Category	Diseases	Tokyo				Japan		
		31st	32nd	33rd	34th	Cum 2008	34th	Cum 2008
I	Ebola hemorrhagic fever					0	0	0
	Crimean-Congo hemorrhagic fever					0	0	0
	Smallpox					0	0	0
	South American hemorrhagic fever					0	0	0
	Plague					0	0	0
	Marburg disease					0	0	0
	Lassa fever					0	0	0
II	Acute poliomyelitis					0	0	1
	Tuberculosis	89	88	90	66	2772	304	17352
	Diphtheria					0	0	0
	Severe Acute Respiratory Syndrome(SARS)					0	0	0
	Avian influenza H5N1					0	0	0
III	Cholera		1			4	1	34
	Shigellosis		1		1	39	14	199
	Enterohemorrhagic Escherichia coli infection	14	31	49	24	222	190	2,536
	Typhoid fever					6	1	31
	Paratyphoid fever					5	0	22
IV	Hepatitis E			1		6	0	32
	West Nile fever					0	0	0
	Hepatitis A	1	1			20	6	123
	Echinococcosis					0	0	10
	Yellow fever					0	0	0
	Psittacosis					0	0	5
	Omsk hemorrhagic fever					0	0	0
	Relapsing fever					0	0	0
	Kyasanur forest disease					0	0	0
	Q fever					1	0	2
	Rabies					0	0	0
	Coccidioidomycosis					0	0	2
	Monkeypox					0	0	0
	Hemorrhagic fever with renal syndrome					0	0	0
	Western equine encephalitis					0	0	0
	Tick-borne encephalitis					0	0	0
	Anthrax					0	0	0
	Scrub typhus(Tsutsugamushi disease)					5	0	121
	Dengue fever		1	1	1	17	3	48
	Eastern equine encephalitis					0	0	0
	Avian influenza (excluding H5N1)					0	0	0
	Nipah virus infection					0	0	0
	Japanese spotted fever					0	5	40
	Japanese encephalitis					0	0	0
	Epidemic typhus					0	0	0
	Hantavirus pulmonary syndrome					0	0	0
	Herpes B virus infection					0	0	0
	Glanders					0		
	Brucellosis					0	1	3
	Venezuelan equine encephalitis					0	0	0
	Hendra virus infection					0	0	0
	Botulism					0	0	0
Malaria					12	1	27	
Tularemia					0	0	4	
Lyme disease					0	0	3	
Lyssavirus infection(excluding rabies)					0	0	0	
Rift valley fever					0	0	0	
Melioidosis					0	0	0	
Legionellosis	4		1	4	50	10	558	
Leptospirosis					0	0	5	
Rocky mountain spotted fever					0	0	0	

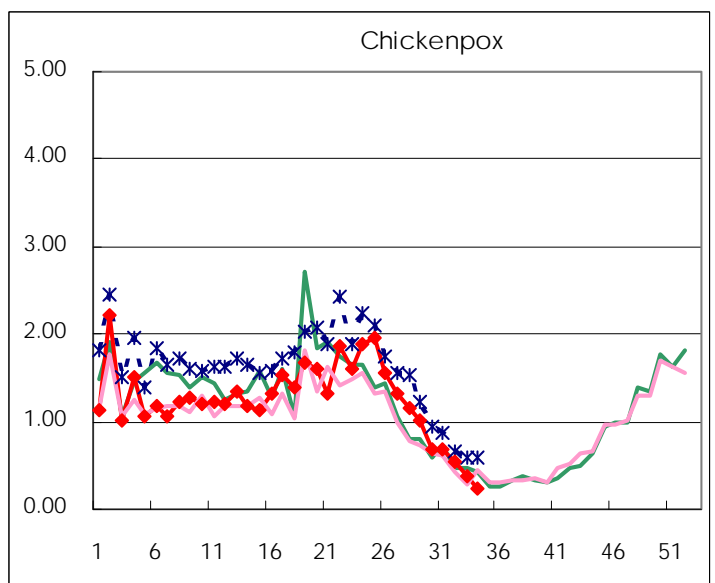
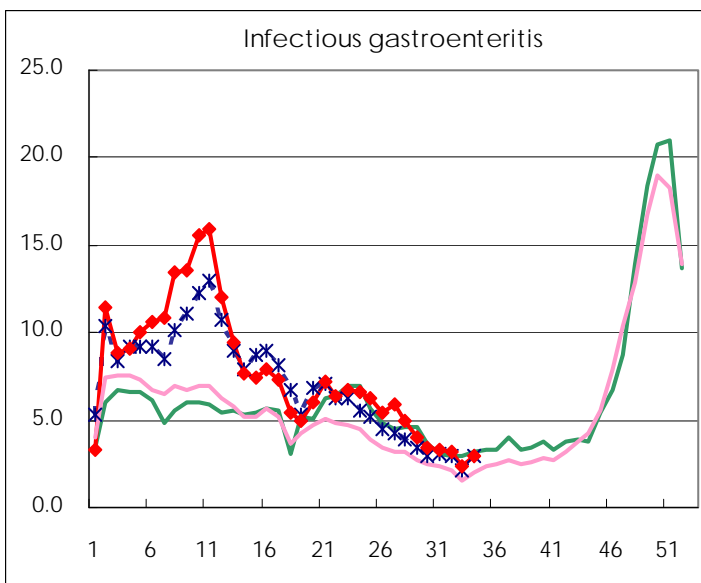
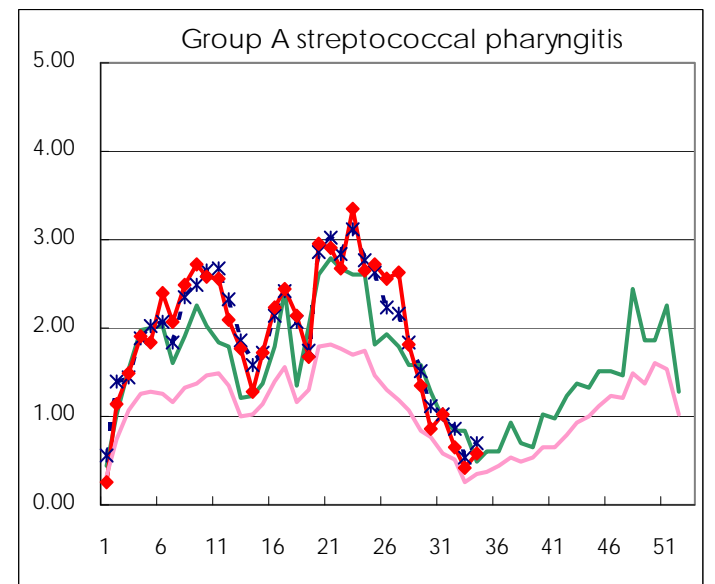
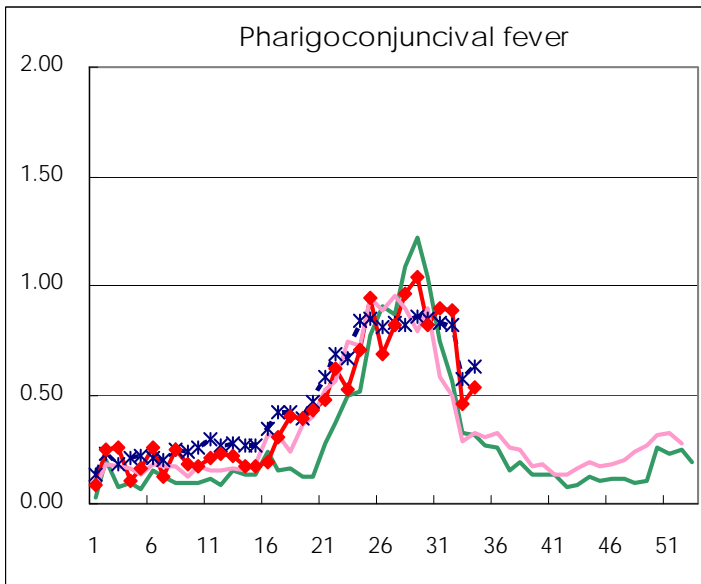
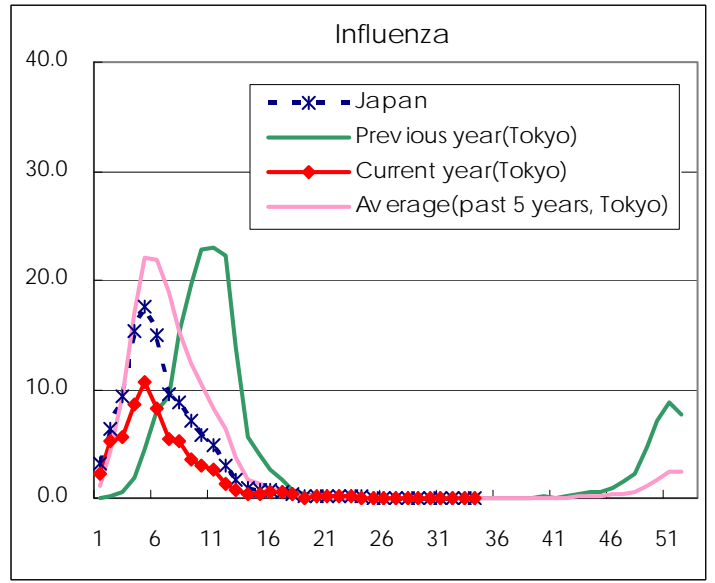
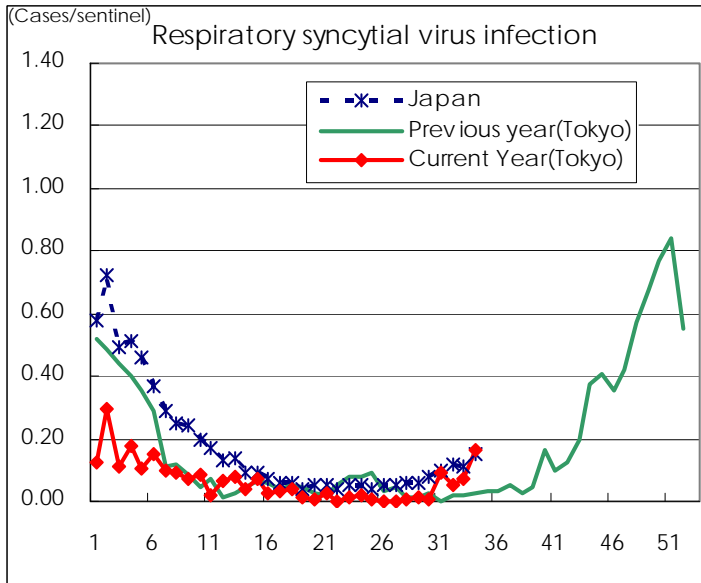
Category	Diseases	Tokyo					Japan	
		31st	32nd	33rd	34th	Cum 2008	34th	Cum 2008
V	Amebiasis	4	7	6	1	124	9	557
	Viral hepatitis(excluding hepatitis A and E)					23	2	152
	Acute encephalitis(excluding JE and WNE)		1			7	1	125
	Cryptosporidiosis					2	0	6
	Creutzfeldt-Jakob disease					11	2	104
	Severe invasive streptococcal infections(TSLS)			1	1	17	2	80
	Acquired immunodeficiency syndrome (AIDS)	13	8	8	12	359	14	980
	Giardiasis			1		17	1	54
	Meningococcal meningitis					2	0	10
	Congenital rubella syndrome					0	0	1
	Syphilis	5	3	3	3	128	4	523
	Tetanus		1			4	2	75
	Vancomycin-resistant S. aureus infection					0	0	0
	Vancomycin-resistant Enterococcus infection					10	1	55
	Rubella		1	3		35	2	266
Measles	7	5	4	5	1,132	26	10,677	

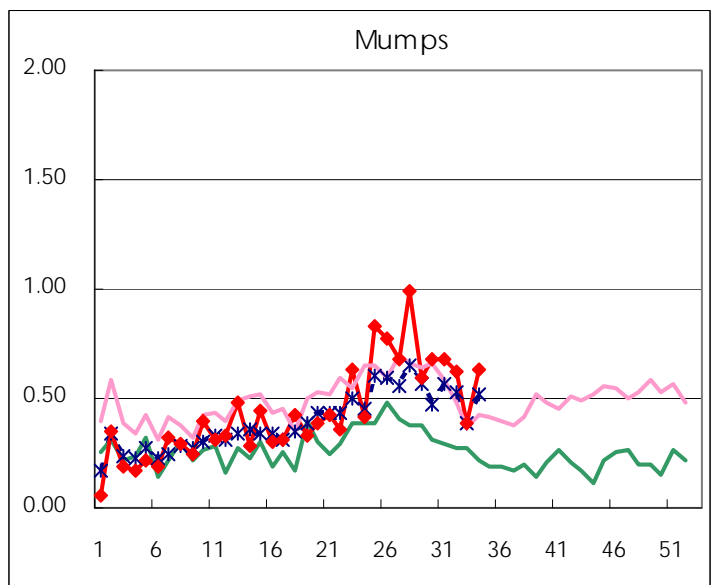
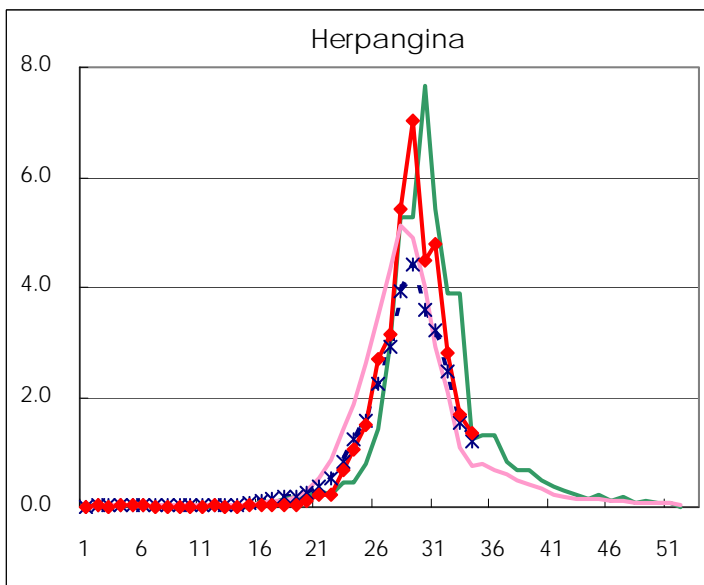
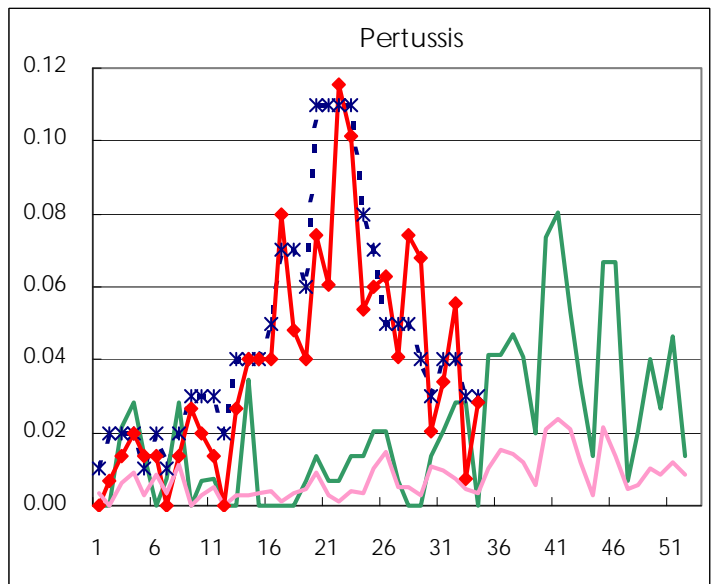
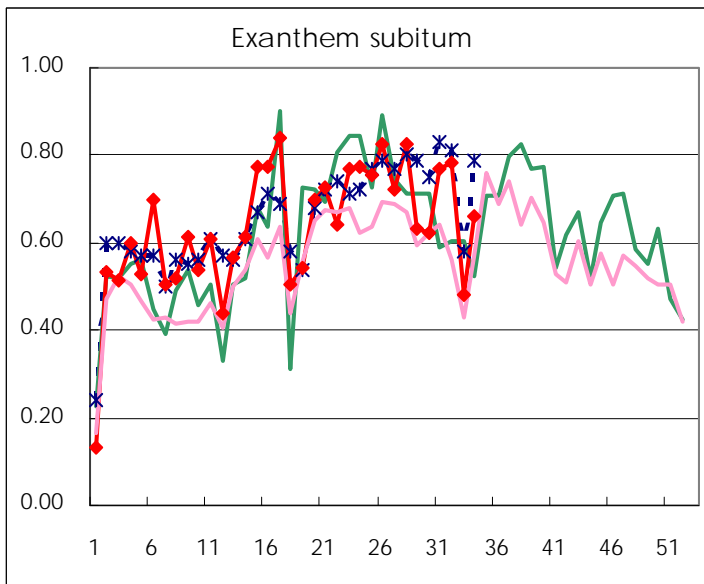
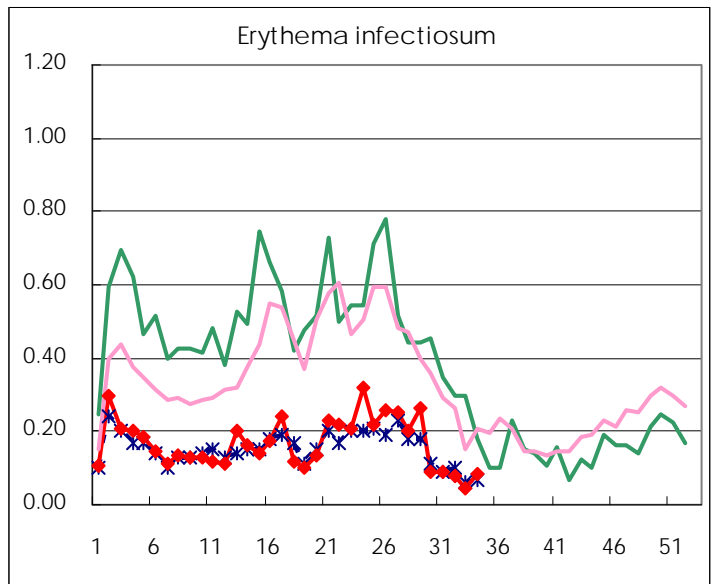
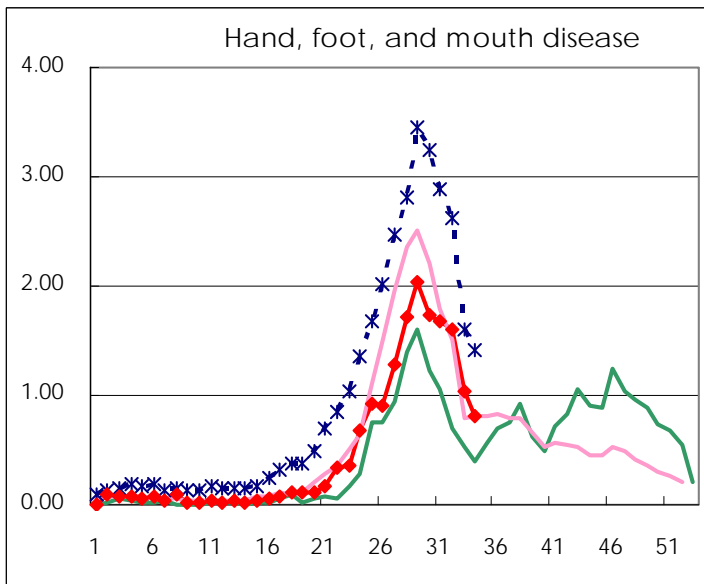
Number of patients with the diseases to be reported
by the designated clinics and hospitals

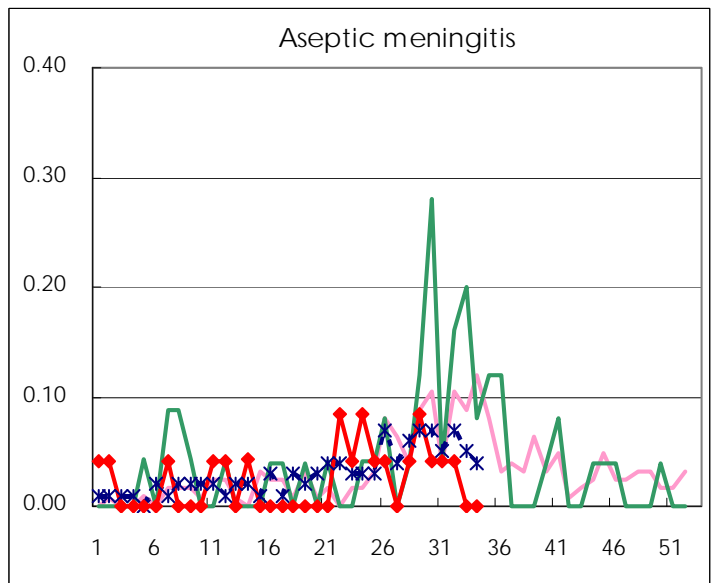
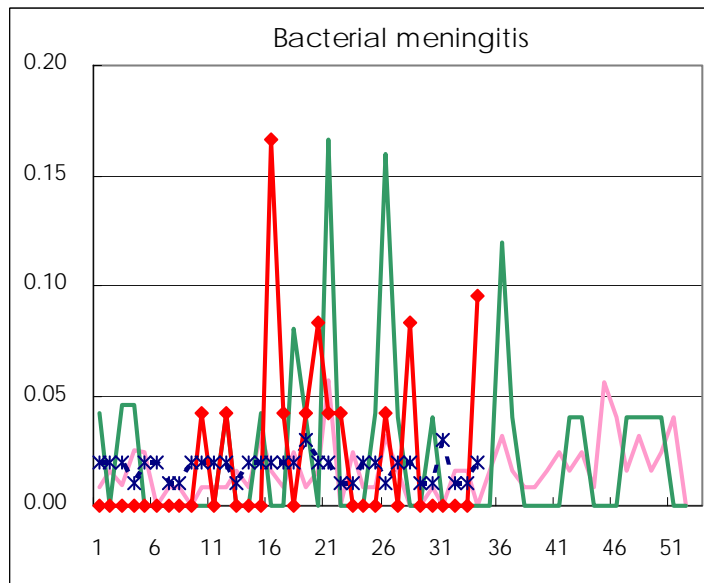
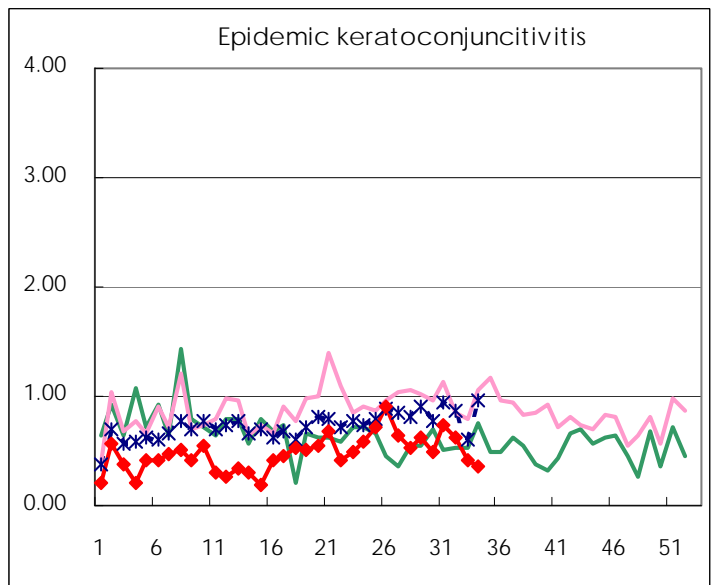
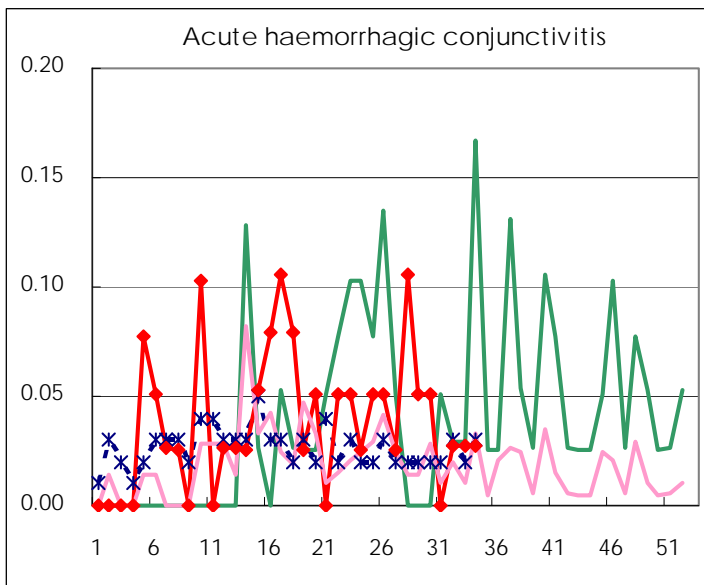
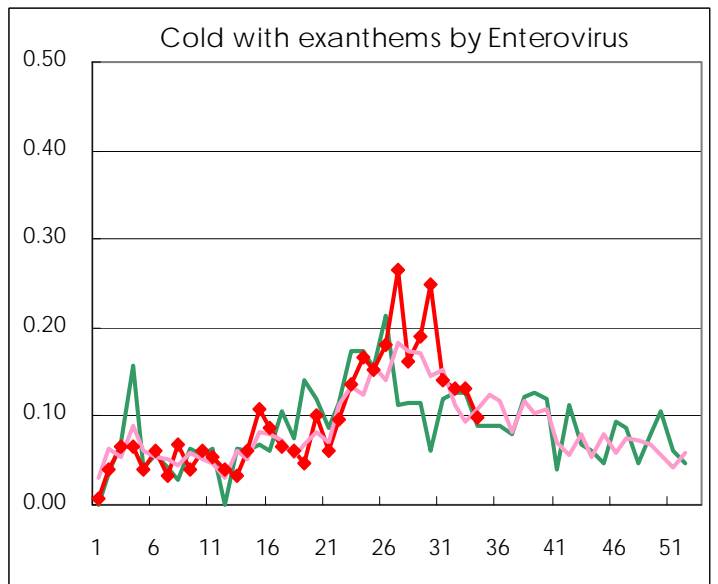
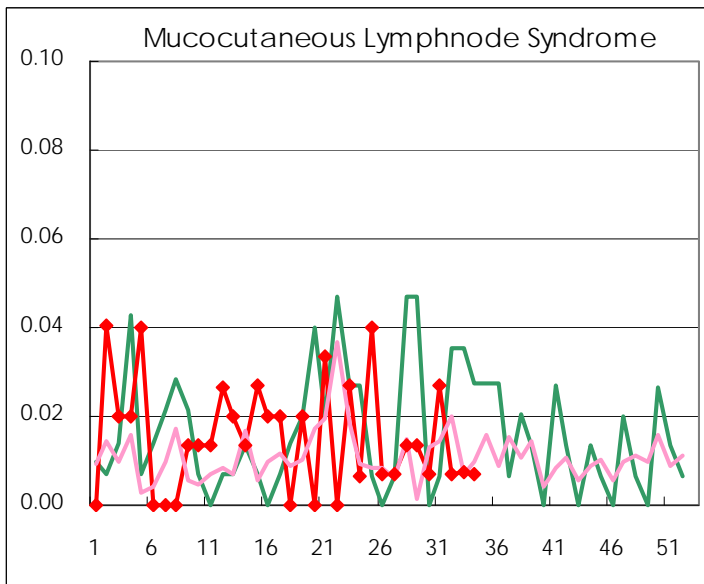
Diseases	2008				
	31st	32nd	33rd	34th	/sentinel
Respiratory syncytial virus infection	14	8	10	23	0.16
Pharyngoconjunctival fever	132	128	62	76	0.54
Group A streptococcal pharyngitis	150	95	58	83	0.58
Infectious gastroenteritis	494	455	316	424	2.99
Chickenpox	100	79	53	32	0.23
Hand, foot, and mouth disease	249	230	142	115	0.81
Erythema infectiosum	13	11	6	12	0.08
Exanthem subitum	114	113	66	94	0.66
Pertussis	5	8	1	4	0.03
Herpangina	709	404	228	193	1.36
Mumps	100	89	53	90	0.63
Cold with exanthems by Enterovirus	21	19	18	14	0.10
Mucocutaneous Lymphnode Syndrome	4	1	1	1	0.01
Influenza	4	5	0	2	0.01
Acute hemorrhagic conjunctivitis	0	1	1	1	0.03
Epidemic keratoconjunctivitis	27	23	15	13	0.36
Bacterial meningitis	0	0	0	2	0.10
Aseptic meningitis	1	1	0	0	0.00
Mycoplasma pneumonia	3	3	2	7	0.33
Chlamydial pneumonia (excluding psittacosis)	0	0	0	0	0.00

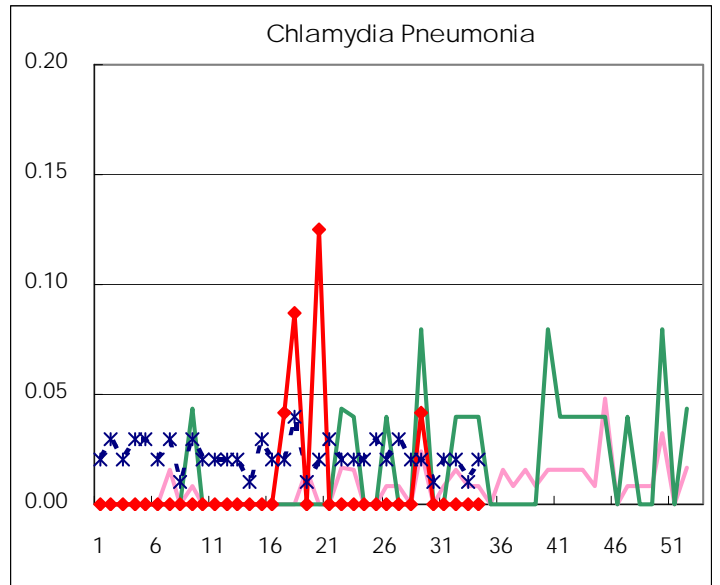
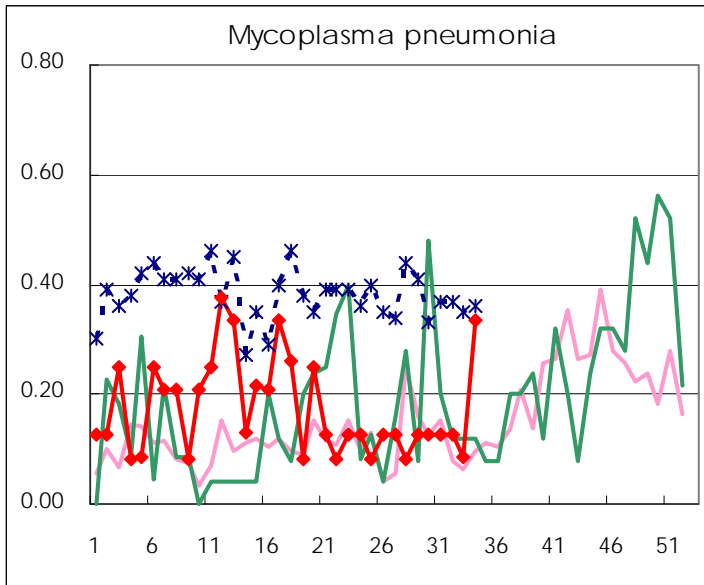
(Blank means 0.)

Disease Trend Graph (weekly reported cases per sentinel in comparison)









Number of sentinel facilities for weekly reporting		
Types of sentinels	Number of sentinels	Sentinels having reported
Pediatric	150	142
Influenza	290	276
Ophthalmic	39	36
Specially-designated	24	21

**Tokyo Metropolitan Government
Infectious Disease Surveillance Center**