
INFECTIOUS DISEASES WEEKLY REPORT

TOKYO IDWR

Tokyo Metropolitan Infectious Disease Surveillance Center

4 September 2008 / Number 35

Surveillance System in Tokyo, Japan

The infectious diseases which all physicians must report

All physicians must report to health centers the incidence of the diseases which are shown at page one. Health centers electronically report the individual cases to Tokyo Metropolitan Infectious Disease Surveillance Center.

The infectious diseases required to be reported by the sentinels

The numbers of patients who visit the sentinel clinics or hospitals during a week are reported to health centers in Tokyo. And they electronically report the numbers to Tokyo Metropolitan Infectious Disease Surveillance Center. We have about 400 sentinel clinics and hospitals in Tokyo.

1st Week is early January and 52nd Week is end of December.

Tokyo Metropolitan Institute of Public Health
Epidemiological Information Office

TEL:81-3-3363-3213 FAX:81-3-5332-7365

e-mail:idsc@tokyo-eiken.go.jp

URL:idsc.tokyo-eiken.go.jp/

Number of patients with the diseases which all physicians must report

Category	Diseases	Tokyo				Japan	
		32nd	33rd	34th	35th	Cum 2008	Cum 2008
I	Ebola hemorrhagic fever						
	Crimean-Congo hemorrhagic fever						
	Smallpox						
	South American hemorrhagic fever						
	Plague						
	Marburg disease						
	Lassa fever						
II	Acute poliomyelitis						1
	Tuberculosis	98	98	79	76	2913	17954
	Diphtheria						
	Severe Acute Respiratory Syndrome(SARS)						
	Avian influenza H5N1						
III	Cholera	1			1	5	37
	Shigellosis	1		1	1	40	216
	Enterohemorrhagic Escherichia coli infection	31	49	24	20	242	2,809
	Typhoid fever					6	31
	Paratyphoid fever					5	22
IV	Hepatitis E		1			6	32
	West Nile fever						
	Hepatitis A	1			1	21	126
	Echinococcosis						8
	Yellow fever						
	Psittacosis						5
	Omsk hemorrhagic fever						
	Relapsing fever						
	Kyasanur forest disease						
	Q fever					1	2
	Rabies						
	Coccidioidomycosis						2
	Monkeypox						
	Hemorrhagic fever with renal syndrome						
	Western equine encephalitis						
	Tick-borne encephalitis						
	Anthrax						
	Scrub typhus(Tsutsugamushi disease)					5	121
	Dengue fever	1	1	1	1	18	51
	Eastern equine encephalitis						
	Avian influenza (excluding H5N1)						
	Nipah virus infection						
	Japanese spotted fever						44
	Japanese encephalitis						1
	Epidemic typhus						
	Hantavirus pulmonary syndrome						
	Herpes B virus infection						
	Glanders						
	Brucellosis						1
	Venezuelan equine encephalitis						
	Hendra virus infection						
Botulism						1	
Malaria				2	14	31	
Tularemia						4	
Lyme disease						3	
Lyssavirus infection(excluding rabies)							
Rift valley fever							
Melioidosis							
Legionellosis		1	4	3	53	578	
Leptospirosis						5	
Rocky mountain spotted fever							

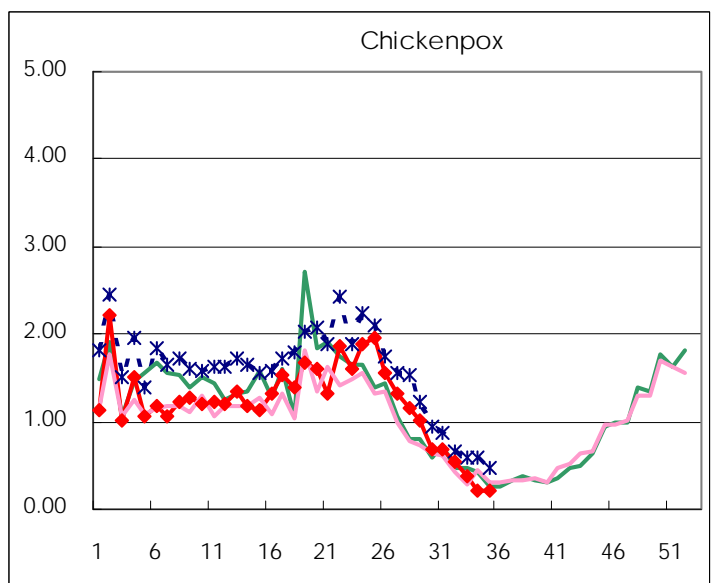
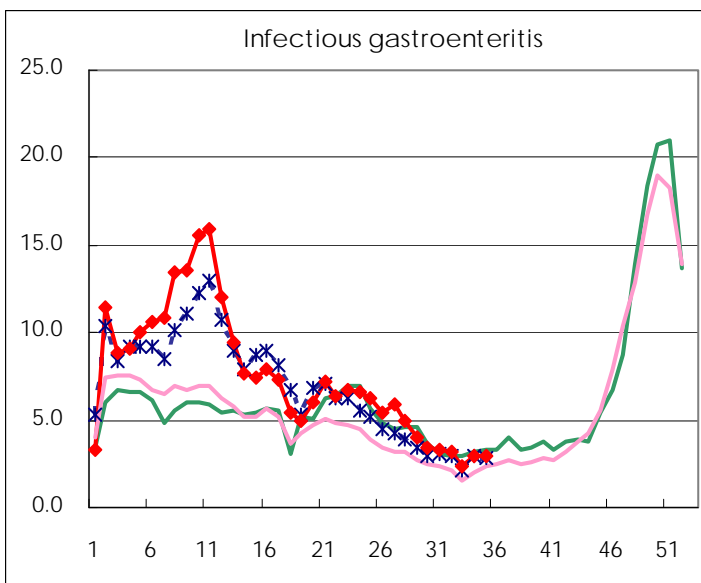
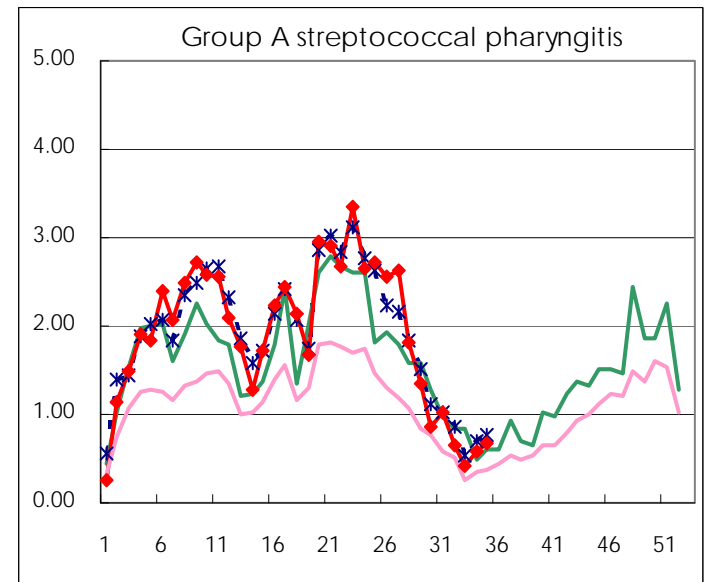
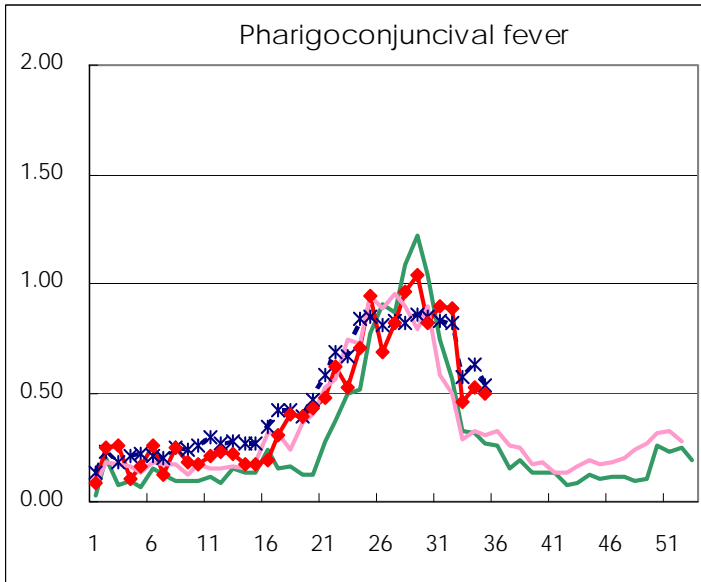
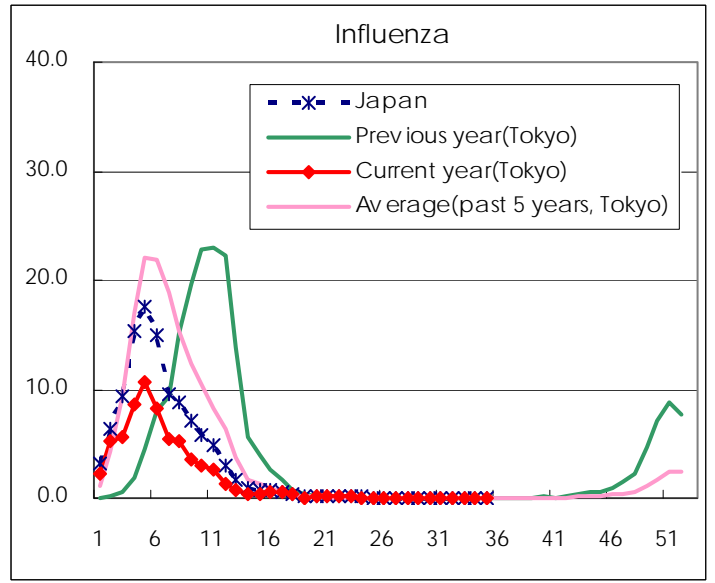
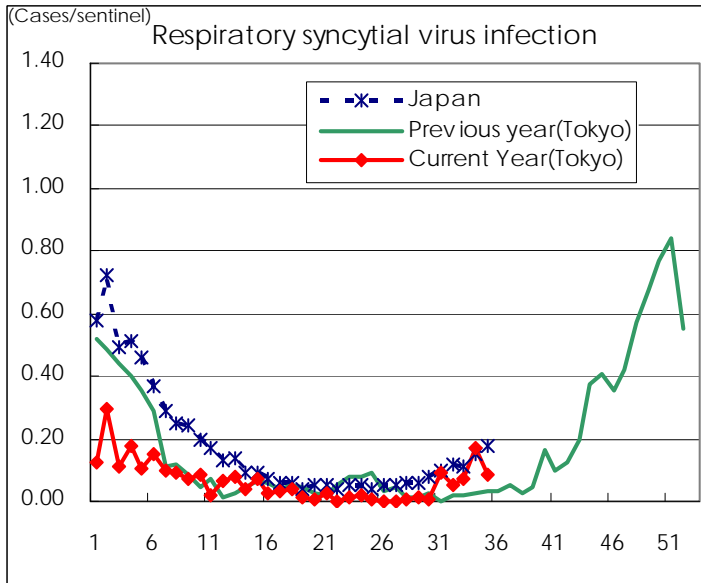
Category	Diseases	Tokyo				Japan		
		32nd	33rd	34th	35th	Cum 2008	35th	Cum 2008
V	Amebiasis	7	6	1	6	130	14	578
	Viral hepatitis(excluding hepatitis A and E)					23	1	156
	Acute encephalitis(excluding JE and WNE)	1				7	3	133
	Cryptosporidiosis					2		6
	Creutzfeldt-Jakob disease					11	1	104
	Severe invasive streptococcal infections(TSLS)		1	1		17	1	82
	Acquired immunodeficiency syndrome (AIDS)	8	8	12	9	368	12	996
	Giardiasis		1			17		54
	Meningococcal meningitis					2		10
	Congenital rubella syndrome							1
	Syphilis	3	3	3	3	131	7	538
	Tetanus	1				4	2	79
	Vancomycin-resistant S. aureus infection							
	Vancomycin-resistant Enterococcus infection					10	1	56
	Rubella	1	3		2	37	3	271
Measles	5	4	5	4	1,136	21	10,711	

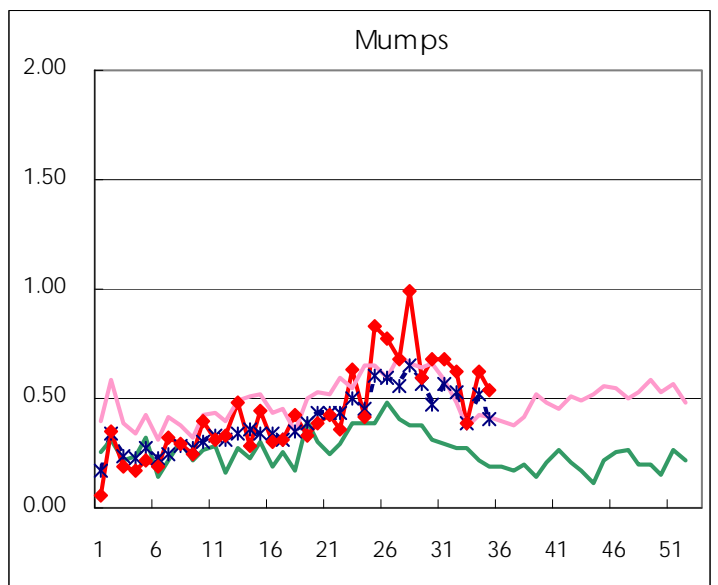
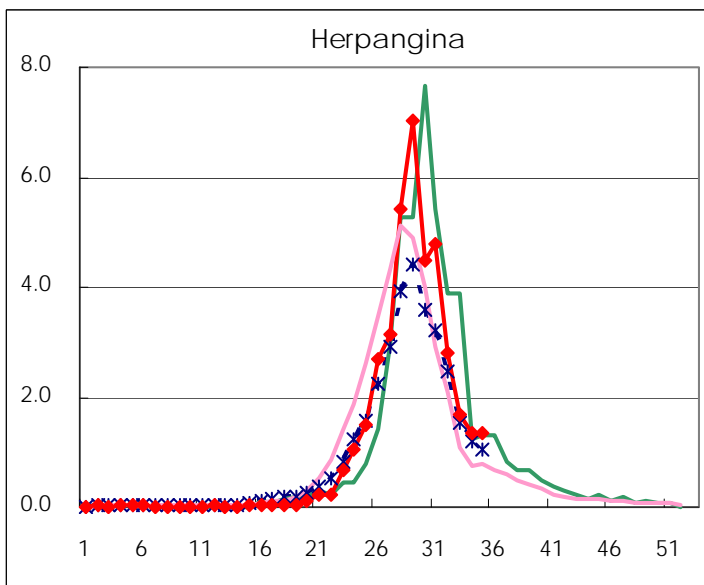
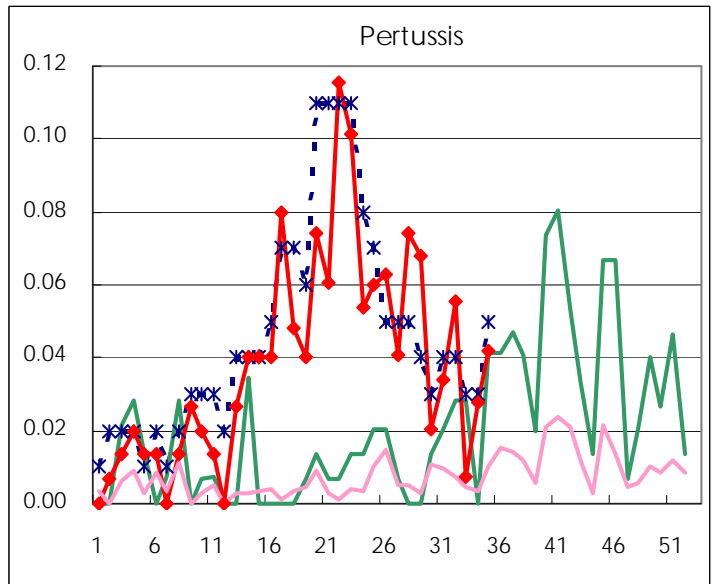
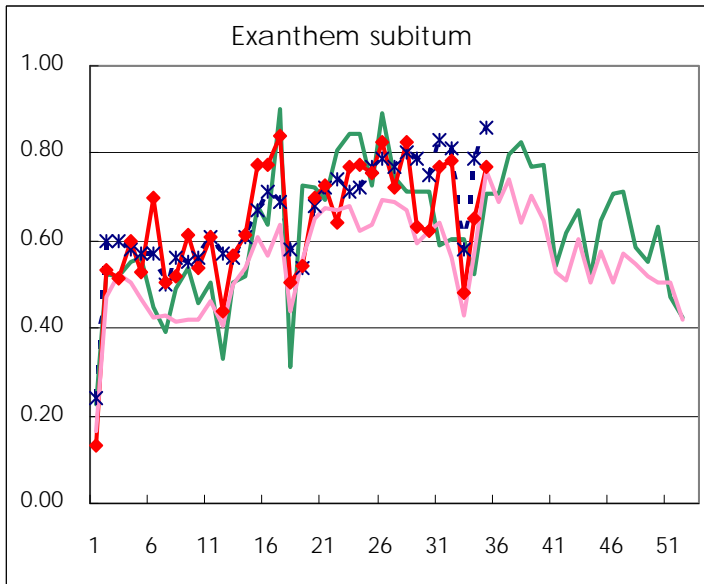
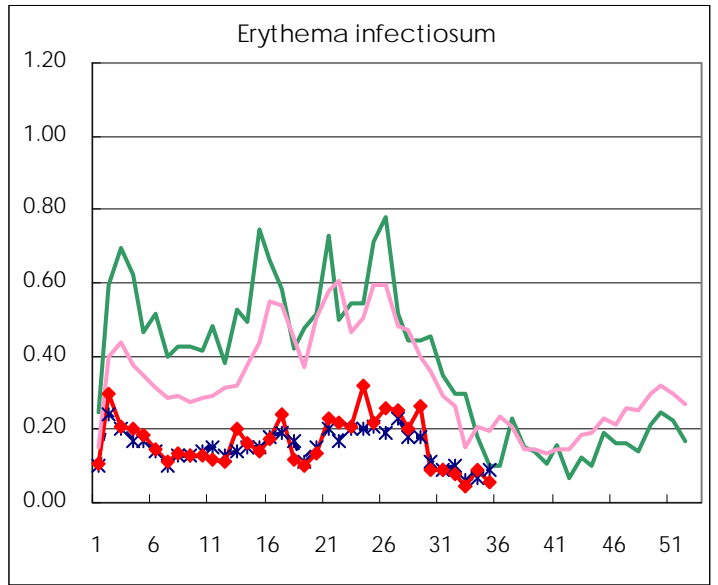
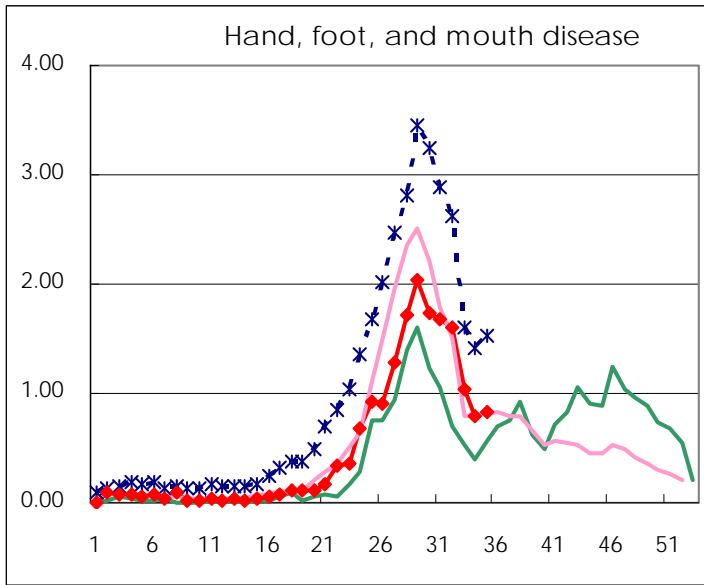
Number of patients with the diseases to be reported
by the designated clinics and hospitals

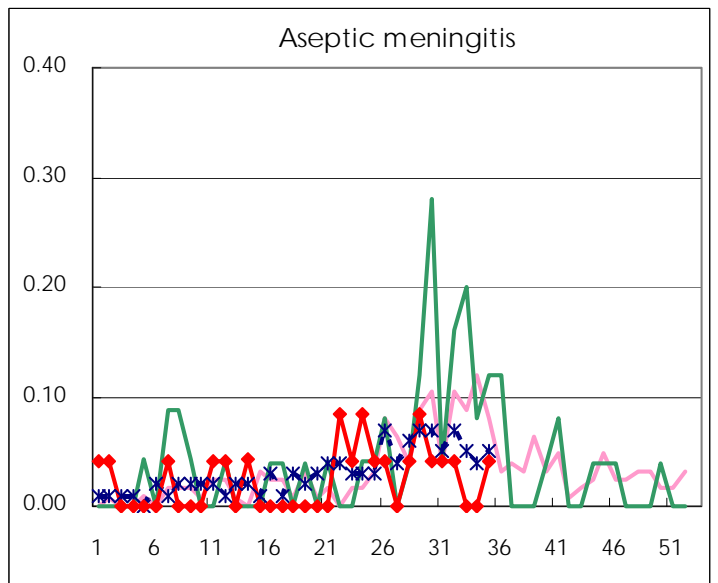
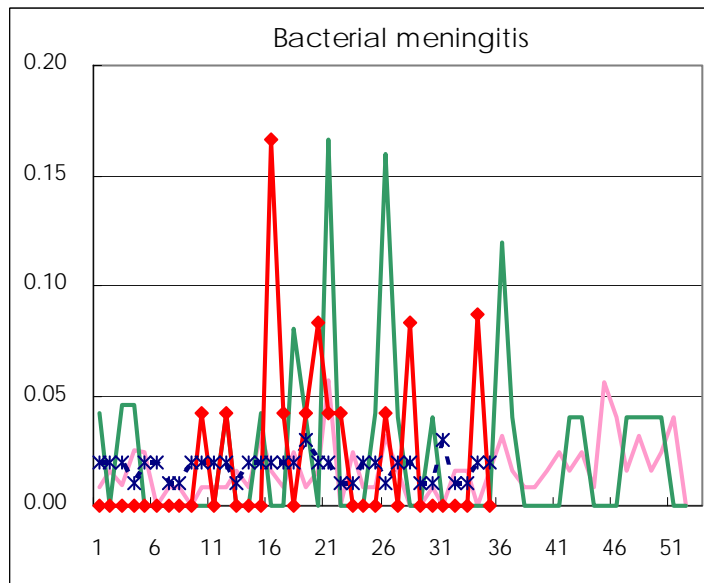
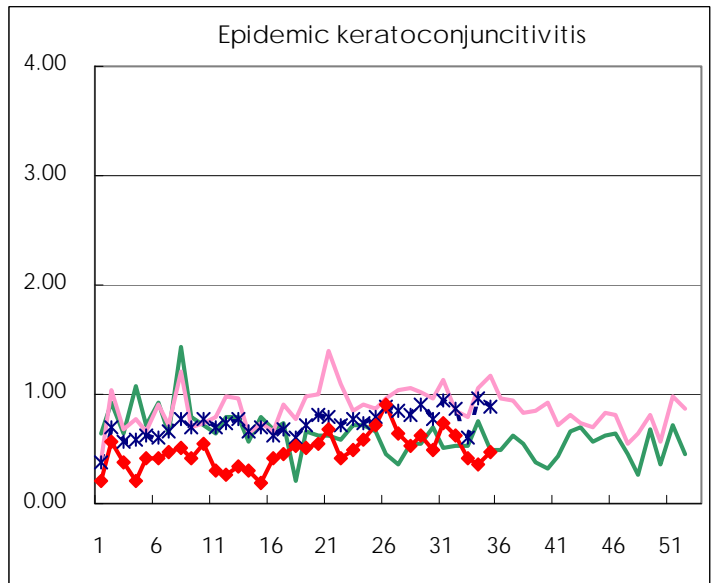
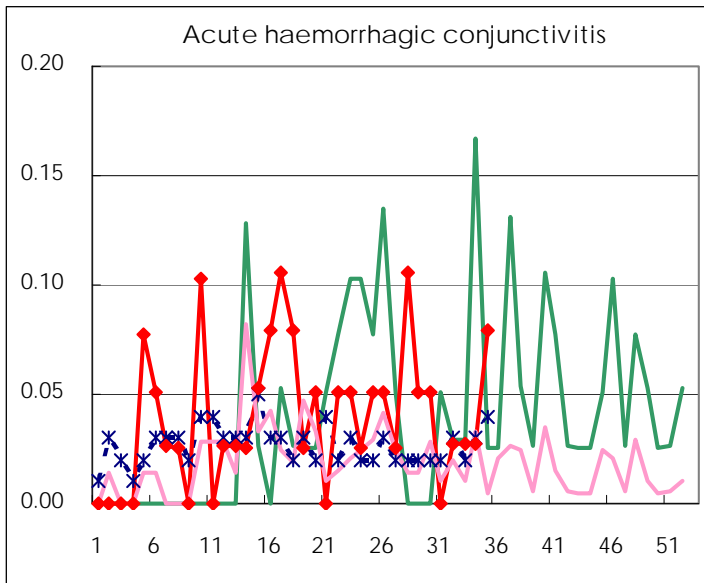
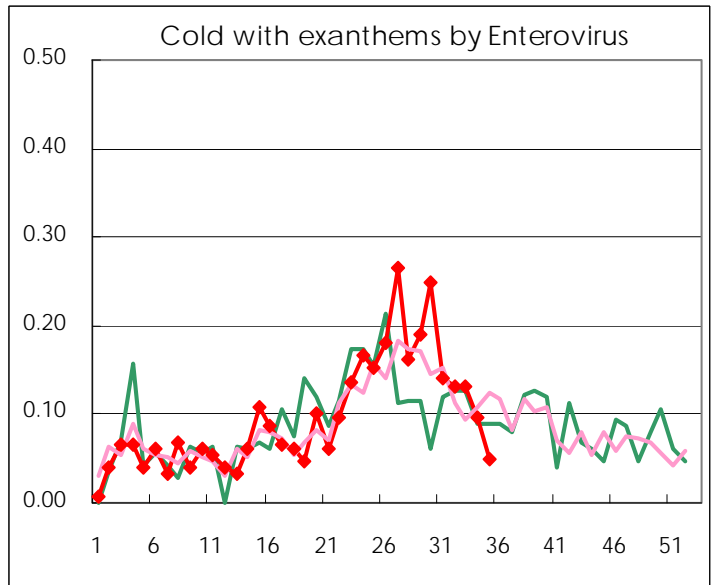
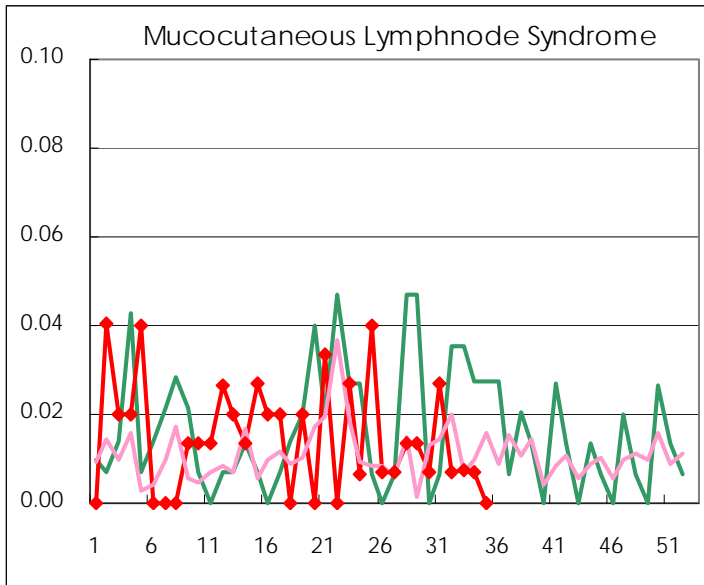
Diseases	2008				
	32nd	33rd	34th	35th	/sentinel
Respiratory syncytial virus infection	8	10	25	12	0.08
Pharyngoconjunctival fever	128	62	76	71	0.50
Group A streptococcal pharyngitis	95	58	83	95	0.66
Infectious gastroenteritis	455	316	426	421	2.94
Chickenpox	79	53	32	32	0.22
Hand, foot, and mouth disease	230	142	115	119	0.83
Erythema infectiosum	11	6	13	8	0.06
Exanthem subitum	113	66	94	110	0.77
Pertussis	8	1	4	6	0.04
Herpangina	404	228	196	191	1.34
Mumps	89	53	90	77	0.54
Cold with exanthems by Enterovirus	19	18	14	7	0.05
Mucocutaneous Lymphnode Syndrome	1	1	1		
Influenza	5		2	2	0.01
Acute hemorrhagic conjunctivitis	1	1	1	3	0.08
Epidemic keratoconjunctivitis	23	15	13	18	0.47
Bacterial meningitis			2		
Aseptic meningitis	1			1	0.04
Mycoplasma pneumonia	3	2	11	8	0.33
Chlamydial pneumonia (excluding psittacosis)					

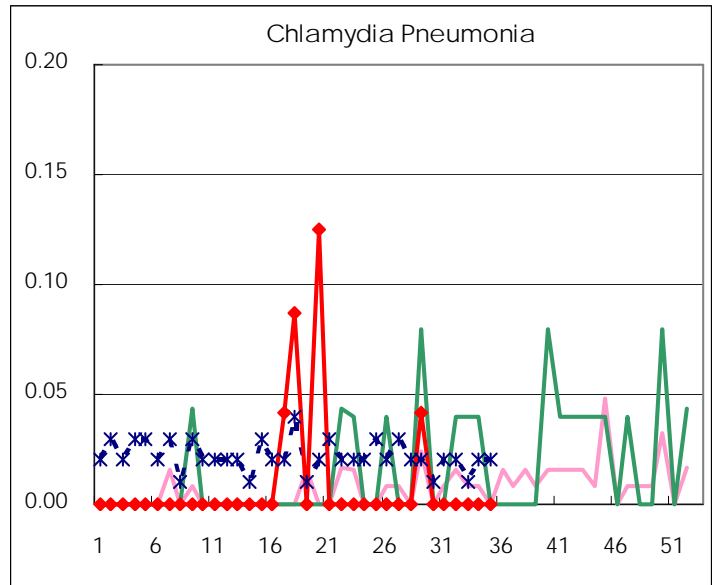
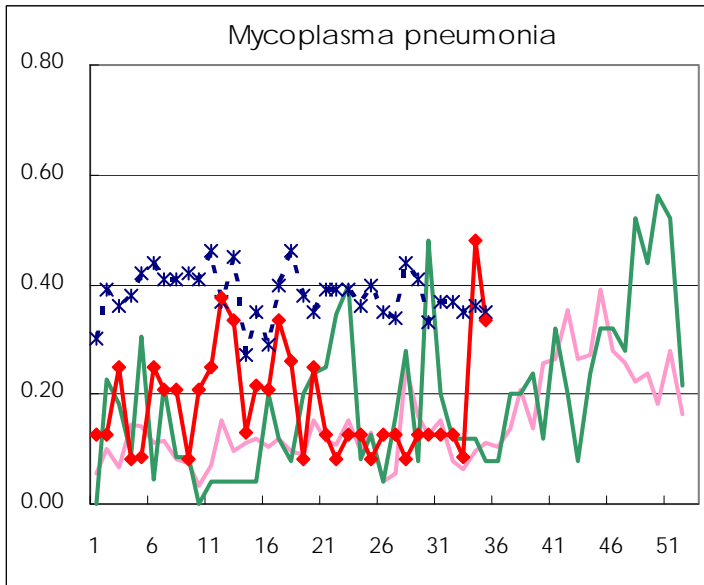
(Blank means 0.)

Disease Trend Graph (weekly reported cases per sentinel in comparison)









Number of sentinel facilities for weekly reporting		
Types of sentinels	Number of sentinels	Sentinels having reported
Pediatric	150	143
Influenza	290	277
Ophthalmic	39	38
Specially-designated	24	24

Tokyo Metropolitan Government
Infectious Disease Surveillance Center