
INFECTIOUS DISEASES WEEKLY REPORT

TOKYO IDWR

Tokyo Metropolitan Infectious Disease Surveillance Center

18 September 2008 / Number 37

Surveillance System in Tokyo, Japan

The infectious diseases which all physicians must report

All physicians must report to health centers the incidence of the diseases which are shown at page one. Health centers electronically report the individual cases to Tokyo Metropolitan Infectious Disease Surveillance Center.

The infectious diseases required to be reported by the sentinels

The numbers of patients who visit the sentinel clinics or hospitals during a week are reported to health centers in Tokyo. And they electronically report the numbers to Tokyo Metropolitan Infectious Disease Surveillance Center. We have about 400 sentinel clinics and hospitals in Tokyo.

1st Week is early January and 52nd Week is end of December.

Tokyo Metropolitan Institute of Public Health
Epidemiological Information Office

TEL:81-3-3363-3213 FAX:81-3-5332-7365

e-mail:idsc@tokyo-eiken.go.jp

URL:idsc.tokyo-eiken.go.jp/

Number of patients with the diseases which all physicians must report

Category	Diseases	Tokyo				Cum 2008	Japan	
		34th	35th	36th	37th		37th	Cum 2008
I	Ebola hemorrhagic fever							
	Crimean-Congo hemorrhagic fever							
	Smallpox							
	South American hemorrhagic fever							
	Plague							
	Marburg disease							
	Lassa fever							
II	Acute poliomyelitis							1
	Tuberculosis	88	95	66	53	3062	310	19004
	Diphtheria							
	Severe Acute Respiratory Syndrome(SARS)							
	Avian influenza H5N1							
III	Cholera		1			5	2	39
	Shigellosis	1	2	1	1	43	6	228
	Enterohemorrhagic Escherichia coli infection	24	21	22	26	291	175	3,253
	Typhoid fever			1	1	8	2	35
	Paratyphoid fever					5	1	23
IV	Hepatitis E					6		33
	West Nile fever							
	Hepatitis A		2	1	2	25	6	137
	Echinococcosis							10
	Yellow fever							
	Psittacosis							5
	Omsk hemorrhagic fever							
	Relapsing fever							
	Kyasanur forest disease							
	Q fever					1		2
	Rabies							
	Coccidioidomycosis							2
	Monkeypox							
	Hemorrhagic fever with renal syndrome							
	Western equine encephalitis							
	Tick-borne encephalitis							
	Anthrax							
	Scrub typhus(Tsutsugamushi disease)					5	2	123
	Dengue fever	1	1	5		23	3	63
	Eastern equine encephalitis							
	Avian influenza (excluding H5N1)							
	Nipah virus infection							
	Japanese spotted fever						1	52
	Japanese encephalitis							1
	Epidemic typhus							
	Hantavirus pulmonary syndrome							
	Herpes B virus infection							
	Glanders							
	Brucellosis							4
	Venezuelan equine encephalitis							
Hendra virus infection								
Botulism							1	
Malaria		2	1	2	17		34	
Tularemia							4	
Lyme disease							3	
Lyssavirus infection(excluding rabies)								
Rift valley fever								
Melioidosis								
Legionellosis	5	3	2	2	58	27	637	
Leptospirosis			1		1	1	7	
Rocky mountain spotted fever								

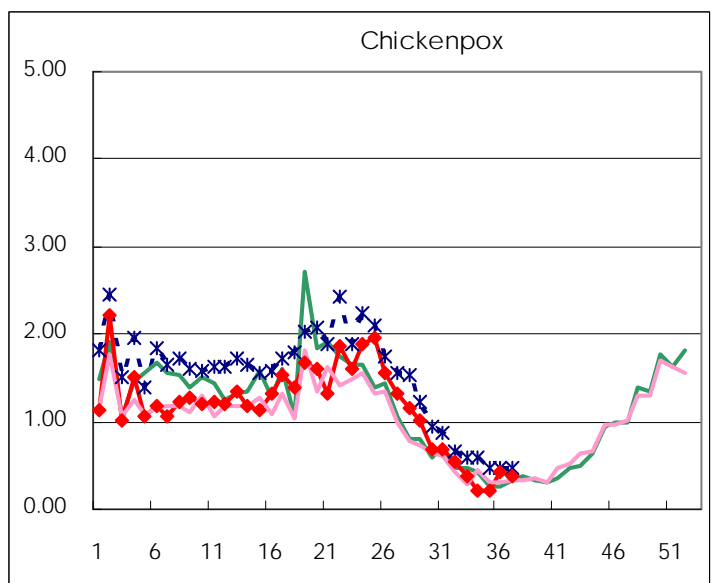
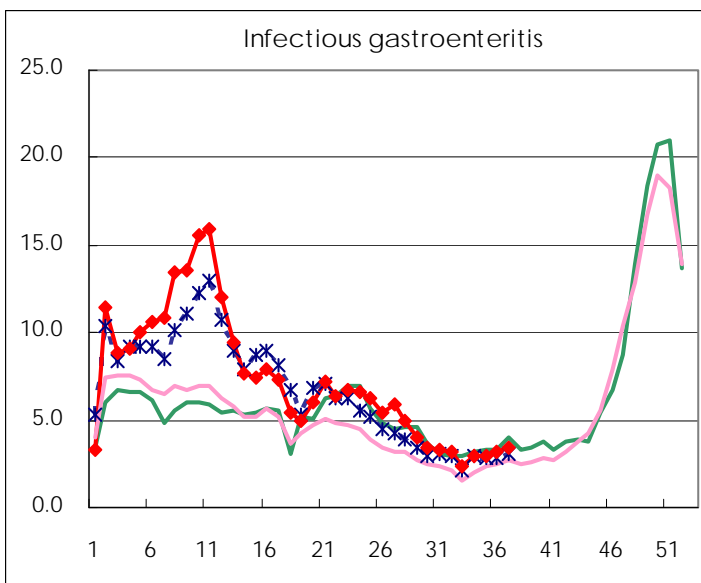
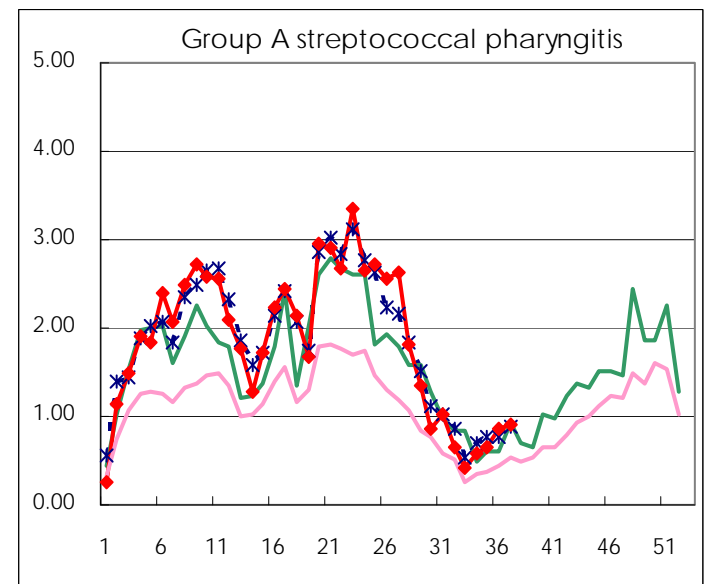
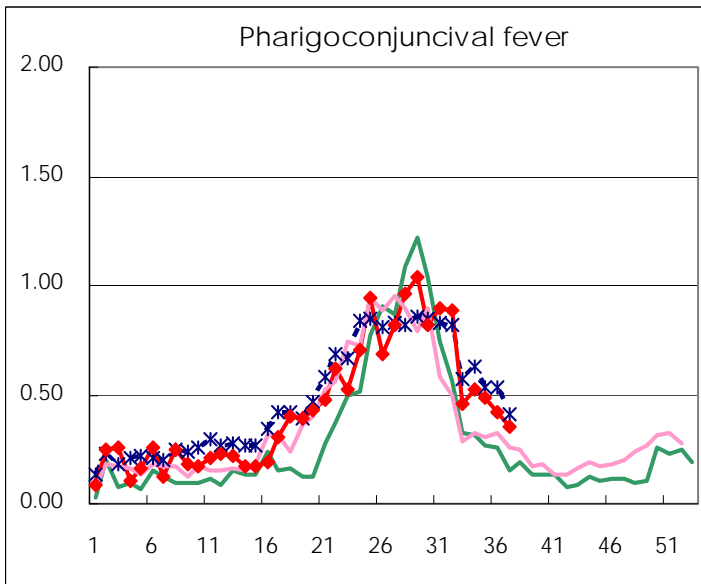
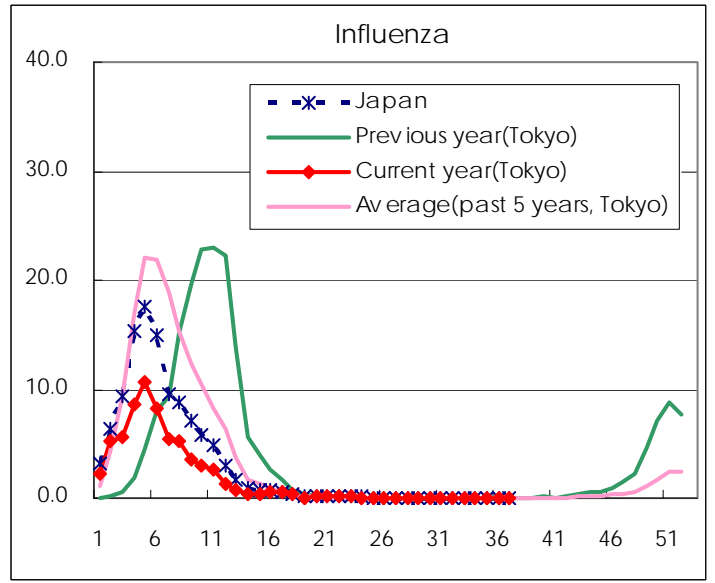
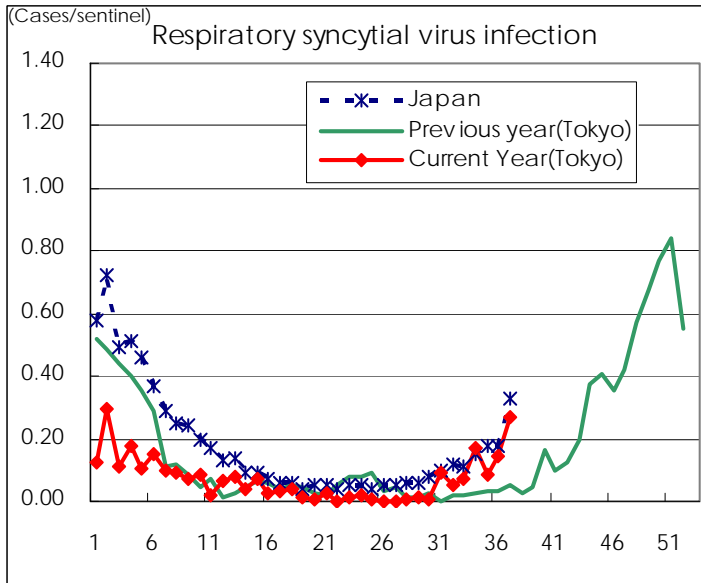
Category	Diseases	Tokyo					Japan	
		34th	35th	36th	37th	Cum 2008	37th	Cum 2008
V	Amebiasis	1	6	3	3	136	13	610
	Viral hepatitis(excluding hepatitis A and E)					23	4	168
	Acute encephalitis(excluding JE and WNE)					7	1	138
	Cryptosporidiosis					2		6
	Creutzfeldt-Jakob disease					11	1	107
	Severe invasive streptococcal infections(TSLS)	1			1	18		88
	Acquired immunodeficiency syndrome (AIDS)	12	9	8	7	383	26	1,070
	Giardiasis			1		18	2	60
	Meningococcal meningitis					2		10
	Congenital rubella syndrome							1
	Syphilis	3	3	10	3	144	9	588
	Tetanus					4	1	85
	Vancomycin-resistant S. aureus infection							
	Vancomycin-resistant Enterococcus infection					10	1	59
	Rubella		2			37	1	273
	Measles	5	5	5	4	1,146	17	10,774

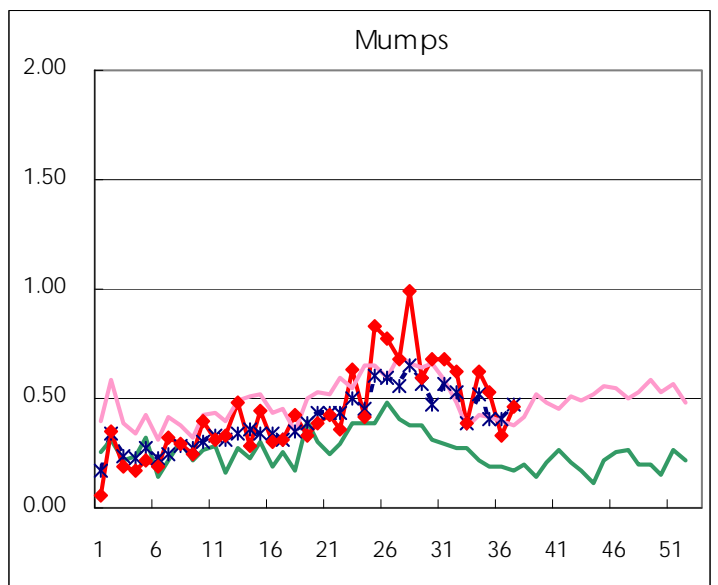
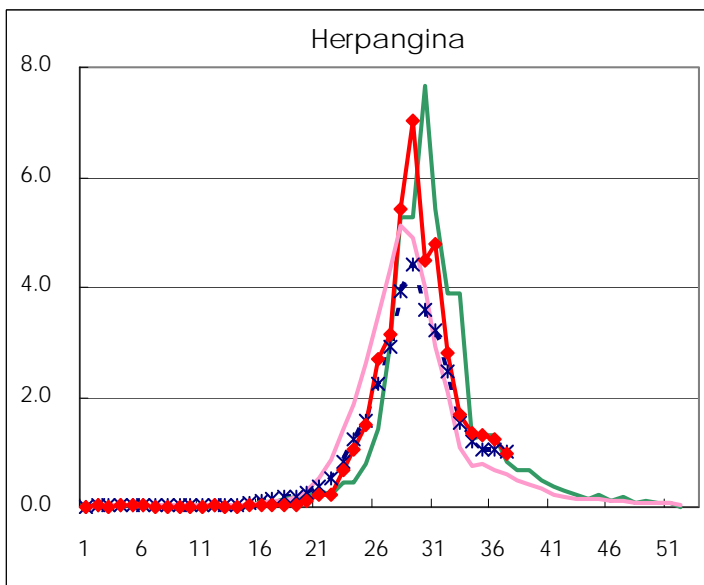
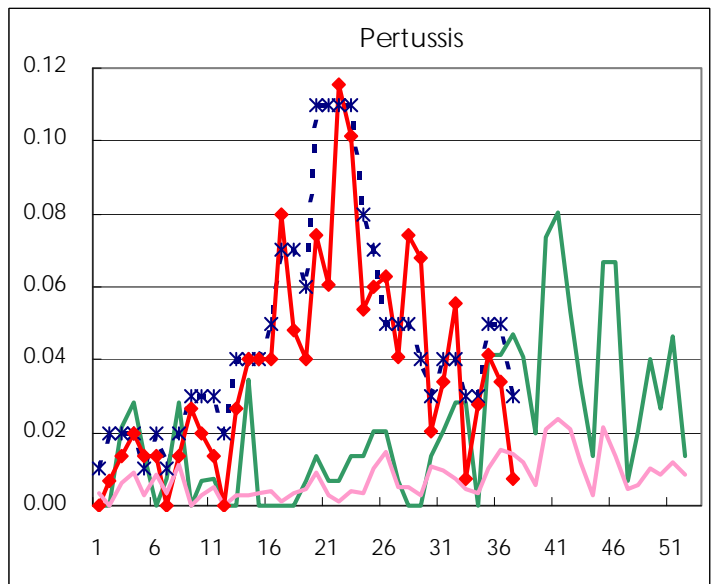
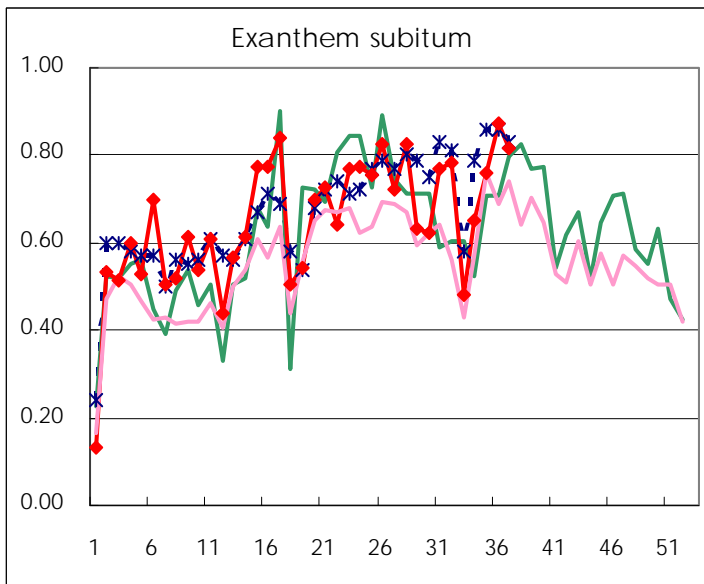
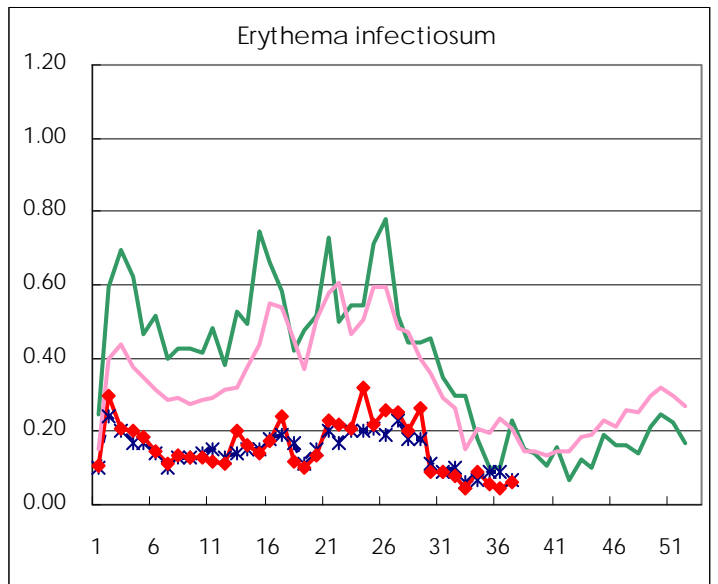
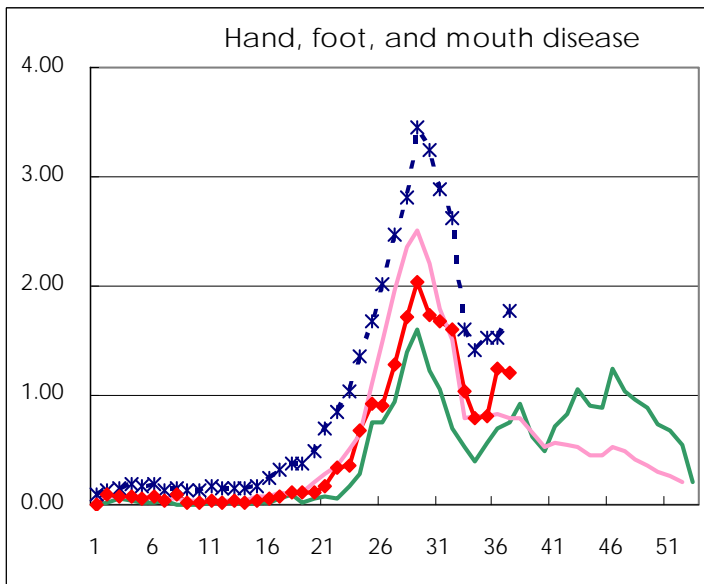
Number of patients with the diseases to be reported
by the designated clinics and hospitals

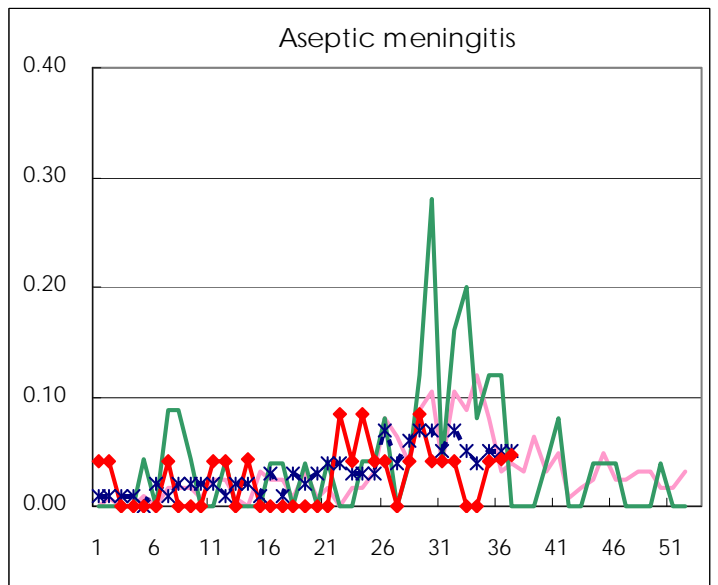
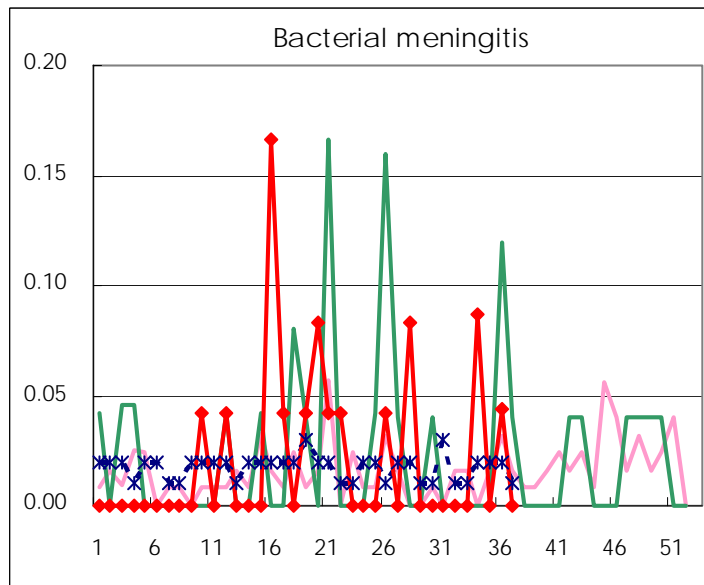
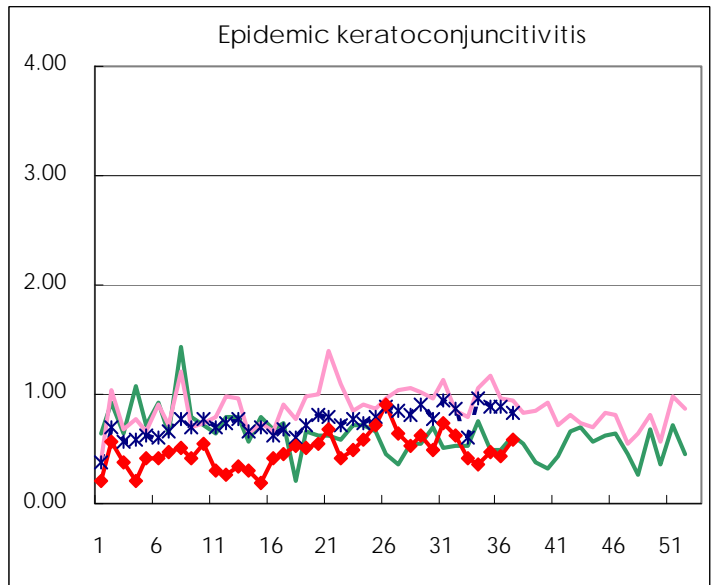
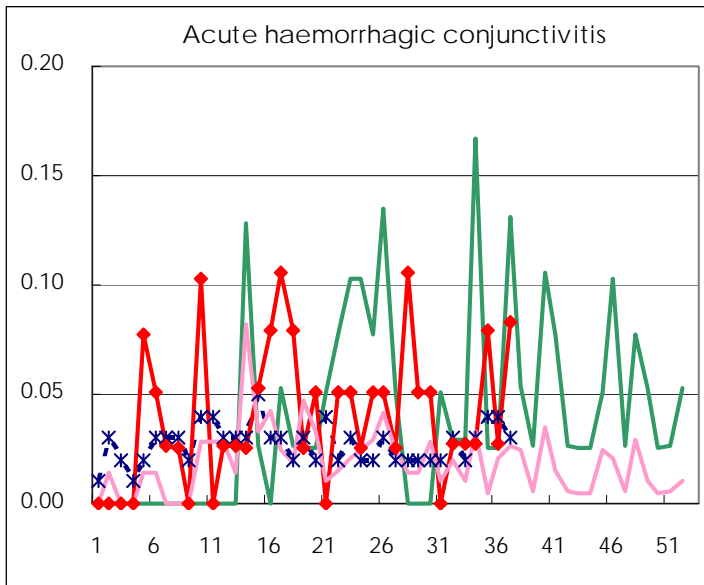
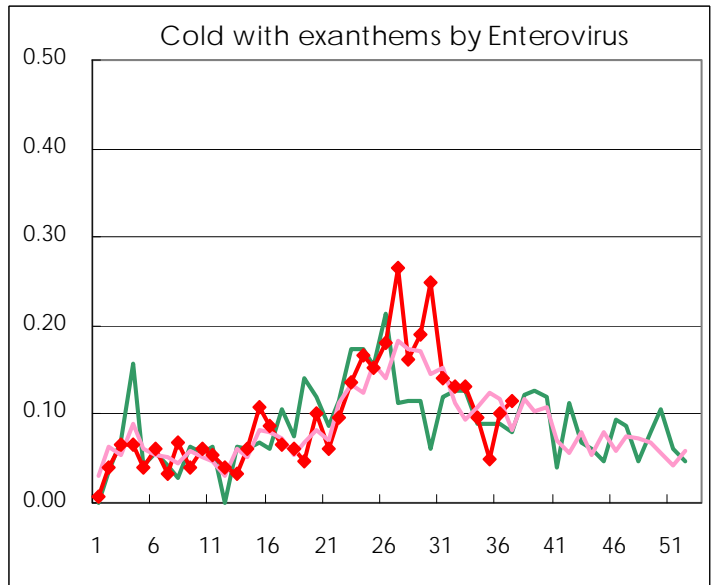
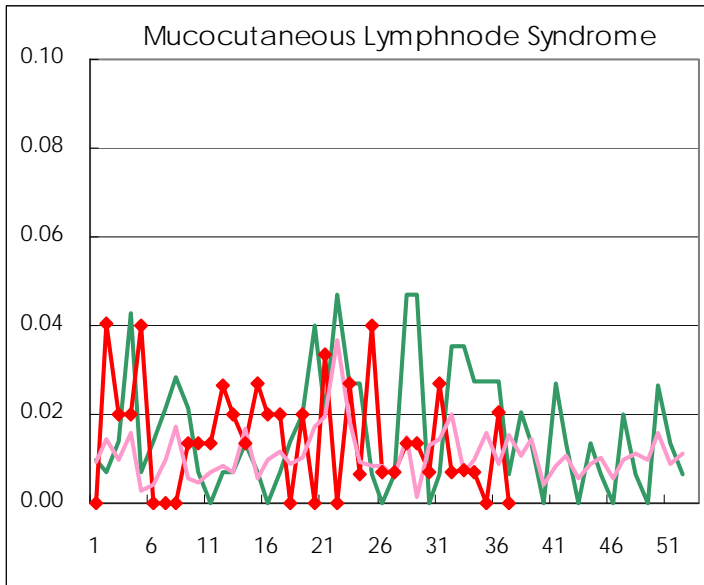
Diseases	2008					
	34th	35th	36th	37th	/sentinel	
Respiratory syncytial virus infection	25	12	21	38	0.27	
Pharyngoconjunctival fever	76	71	61	49	0.35	
Group A streptococcal pharyngitis	83	96	128	126	0.90	
Infectious gastroenteritis	426	423	465	477	3.41	
Chickenpox	32	32	64	53	0.38	
Hand, foot, and mouth disease	115	119	184	168	1.20	
Erythema infectiosum	13	8	7	9	0.06	
Exanthem subitum	94	110	128	114	0.81	
Pertussis	4	6	5	1	0.01	
Herpangina	196	191	180	137	0.98	
Mumps	90	77	49	65	0.46	
Cold with exanthems by Enterovirus	14	7	15	16	0.11	
Mucocutaneous Lymphnode Syndrome	1		3			
Influenza	2	2	4	2	0.01	
Acute hemorrhagic conjunctivitis	1	3	1	3	0.08	
Epidemic keratoconjunctivitis	13	18	16	21	0.58	
Bacterial meningitis	2		1			
Aseptic meningitis		1	1	1	0.05	
Mycoplasma pneumonia	11	8	7	7	0.33	
Chlamydial pneumonia (excluding psittacosis)			1	1	0.05	

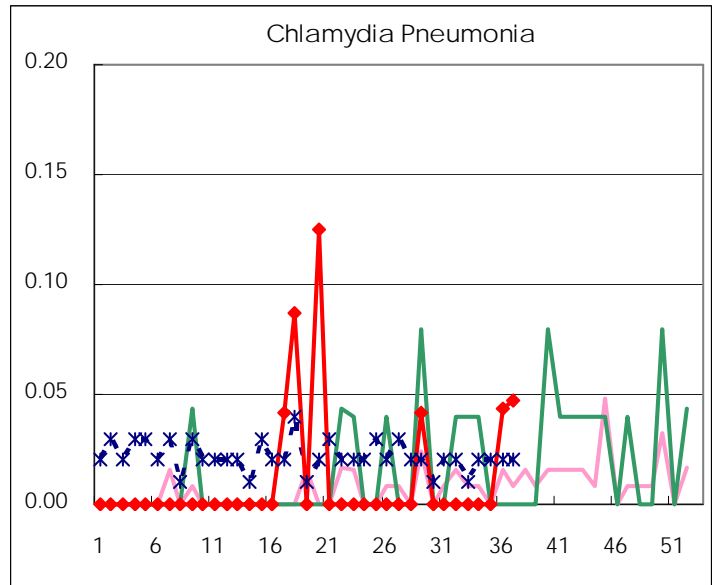
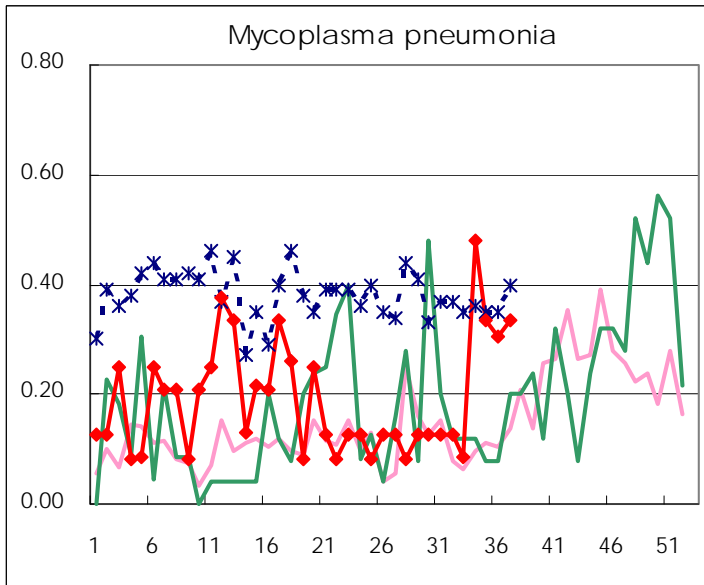
(Blank means 0.)

Disease Trend Graph (weekly reported cases per sentinel in comparison)









Number of sentinel facilities for weekly reporting		
Types of sentinels	Number of sentinels	Sentinels having reported
Pediatric	150	140
Influenza	290	275
Ophthalmic	39	36
Specially-designated	24	21

Tokyo Metropolitan Government
Infectious Disease Surveillance Center