
INFECTIOUS DISEASES WEEKLY REPORT

TOKYO IDWR

Tokyo Metropolitan Infectious Disease Surveillance Center

25 September 2008 / Number 38

Surveillance System in Tokyo, Japan

The infectious diseases which all physicians must report

All physicians must report to health centers the incidence of the diseases which are shown at page one. Health centers electronically report the individual cases to Tokyo Metropolitan Infectious Disease Surveillance Center.

The infectious diseases required to be reported by the sentinels

The numbers of patients who visit the sentinel clinics or hospitals during a week are reported to health centers in Tokyo. And they electronically report the numbers to Tokyo Metropolitan Infectious Disease Surveillance Center. We have about 400 sentinel clinics and hospitals in Tokyo.

1st Week is early January and 52nd Week is end of December.

Tokyo Metropolitan Institute of Public Health
Epidemiological Information Office

TEL:81-3-3363-3213 FAX:81-3-5332-7365

e-mail:idsc@tokyo-eiken.go.jp

URL:idsc.tokyo-eiken.go.jp/

Number of patients with the diseases which all physicians must report

Category	Diseases	Tokyo				Japan		
		35th	36th	37th	38th	Cum 2008	38th	Cum 2008
I	Ebola hemorrhagic fever							
	Crimean-Congo hemorrhagic fever							
	Smallpox							
	South American hemorrhagic fever							
	Plague							
	Marburg disease							
	Lassa fever							
II	Acute poliomyelitis							1
	Tuberculosis	95	67	66	34	3111	196	19379
	Diphtheria							
	Severe Acute Respiratory Syndrome(SARS)							
	Avian influenza H5N1							
III	Cholera	1				5		41
	Shigellosis	2	1	1	3	46	6	234
	Enterohemorrhagic Escherichia coli infection	21	22	27	13	305	131	3,403
	Typhoid fever		1	1		8	1	36
	Paratyphoid fever					5		23
IV	Hepatitis E					6		33
	West Nile fever							
	Hepatitis A	2	1	2		25	2	139
	Echinococcosis							10
	Yellow fever							
	Psittacosis							5
	Omsk hemorrhagic fever							
	Relapsing fever							
	Kyasanur forest disease							
	Q fever					1		2
	Rabies							
	Coccidioidomycosis							2
	Monkeypox							
	Hemorrhagic fever with renal syndrome							
	Western equine encephalitis							
	Tick-borne encephalitis							
	Anthrax							
	Scrub typhus(Tsutsugamushi disease)					5		123
	Dengue fever	1	5			23	2	66
	Eastern equine encephalitis							
	Avian influenza (excluding H5N1)							
	Nipah virus infection							
	Japanese spotted fever						2	54
	Japanese encephalitis							1
	Epidemic typhus							
	Hantavirus pulmonary syndrome							
	Herpes B virus infection							
	Glanders							
	Brucellosis							4
	Venezuelan equine encephalitis							
Hendra virus infection								
Botulism							1	
Malaria	2	1	3		18	2	37	
Tularemia							4	
Lyme disease							3	
Lyssavirus infection(excluding rabies)								
Rift valley fever								
Melioidosis								
Legionellosis	3	2	2		58	10	654	
Leptospirosis		1		1	2	4	13	
Rocky mountain spotted fever								

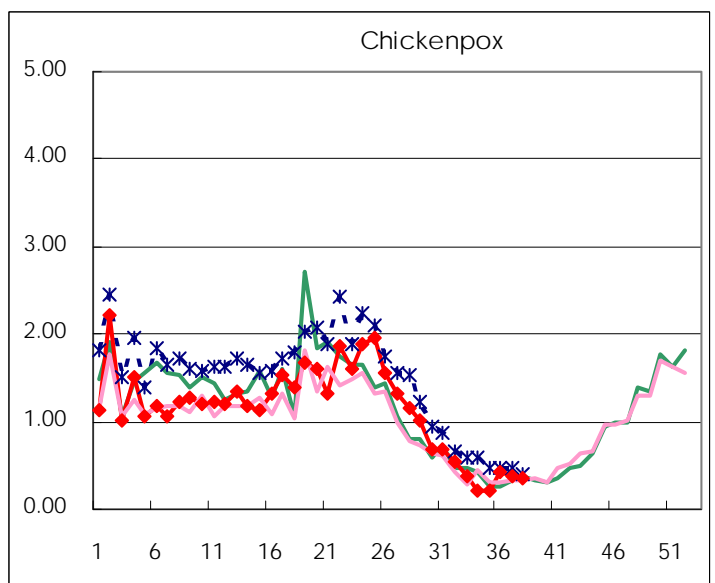
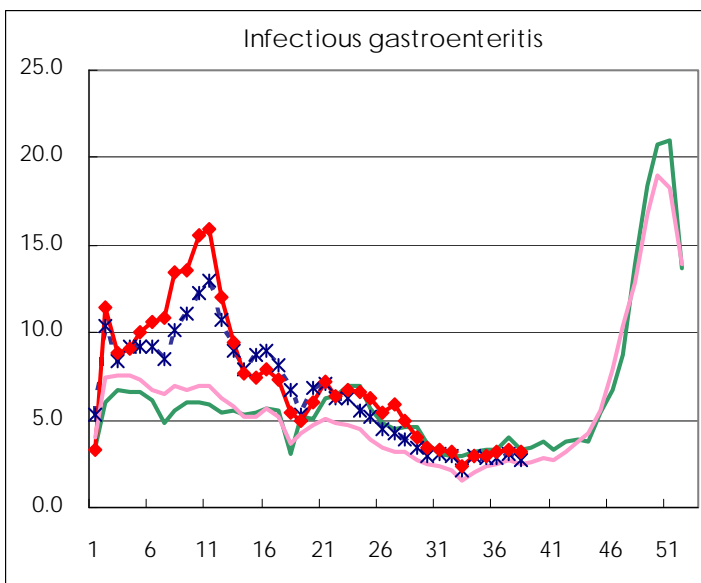
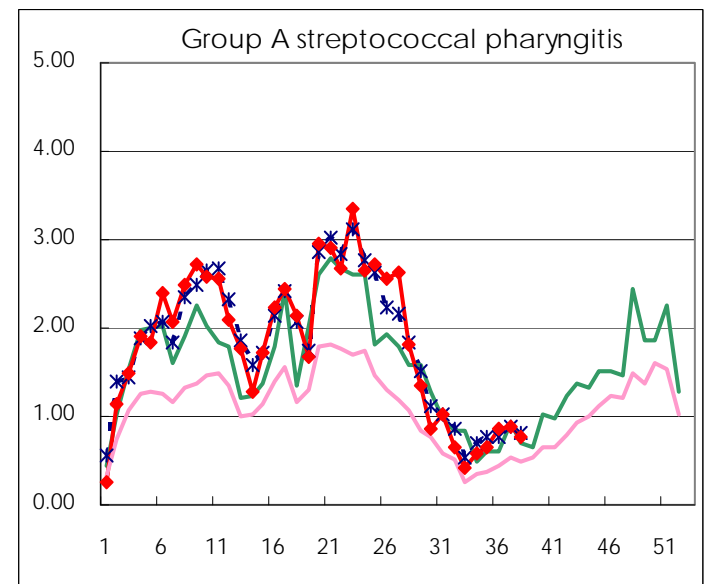
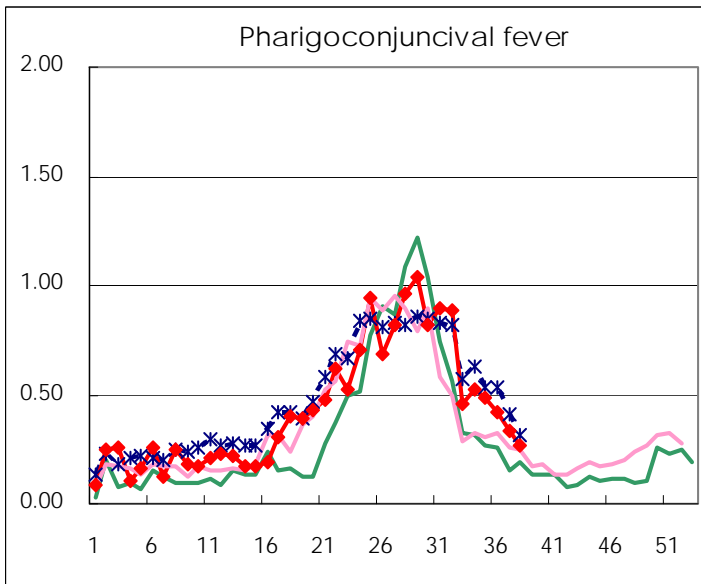
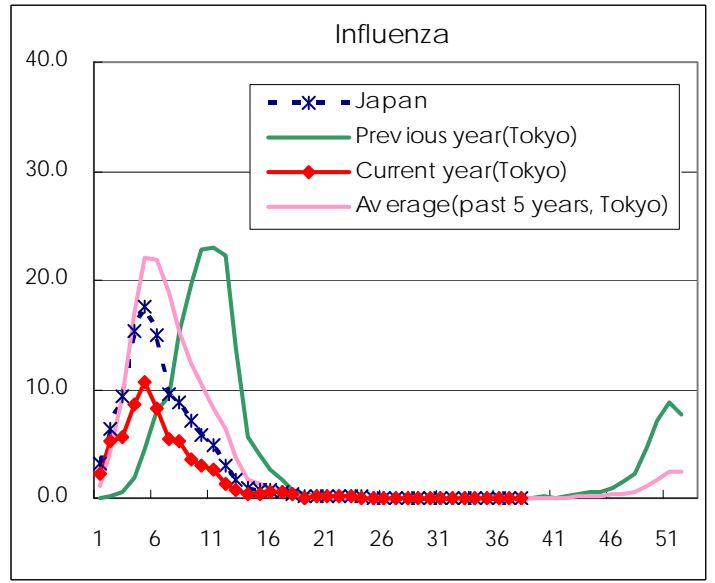
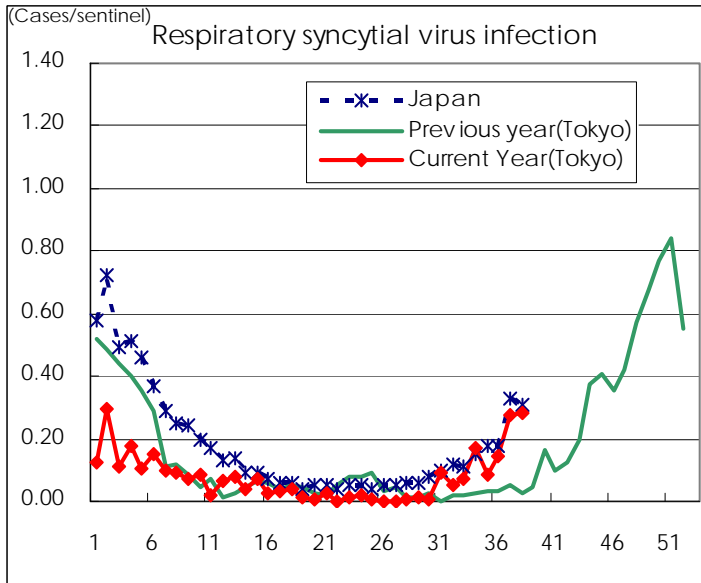
Category	Diseases	Tokyo					Japan	
		35th	36th	37th	38th	Cum 2008	38th	Cum 2008
V	Amebiasis	6	3	3	3	139	9	626
	Viral hepatitis(excluding hepatitis A and E)				1	24		169
	Acute encephalitis(excluding JE and WNE)					7	2	140
	Cryptosporidiosis				1	3		7
	Creutzfeldt-Jakob disease				1	12	3	110
	Severe invasive streptococcal infections(TSLS)			1		18	1	90
	Acquired immunodeficiency syndrome (AIDS)	9	8	7	12	395	19	1,103
	Giardiasis		1		1	19		62
	Meningococcal meningitis					2		10
	Congenital rubella syndrome							1
	Syphilis	3	10	3	1	145	6	602
	Tetanus					4		85
	Vancomycin-resistant S. aureus infection							
	Vancomycin-resistant Enterococcus infection					10	2	61
	Rubella	2			1	38	1	274
	Measles	5	5	4	2	1,148	15	10,794

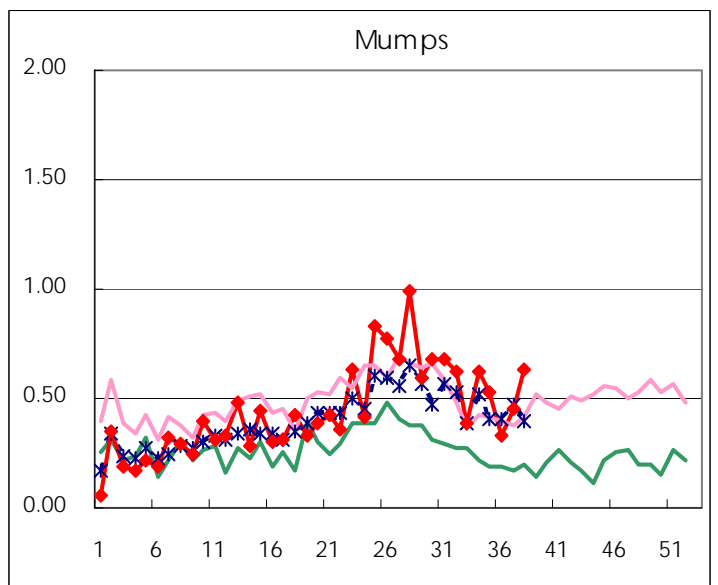
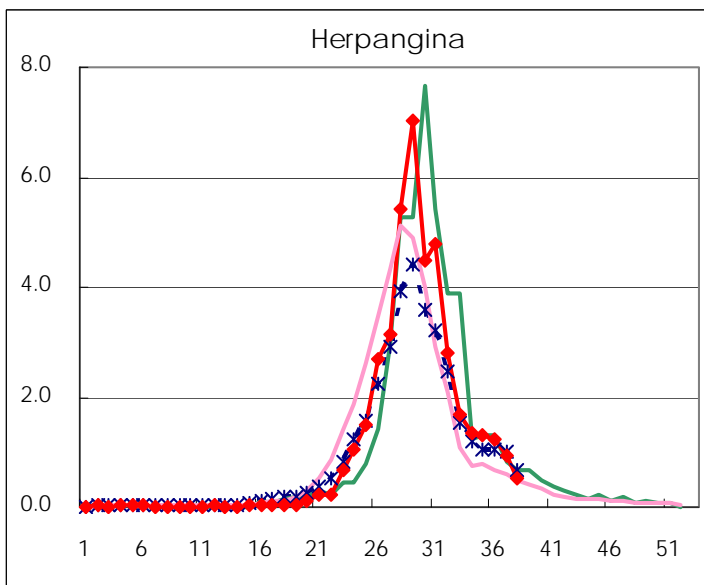
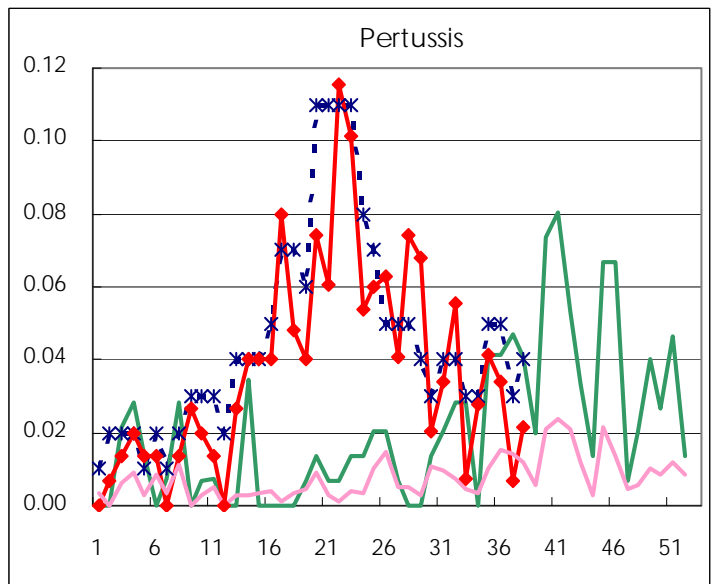
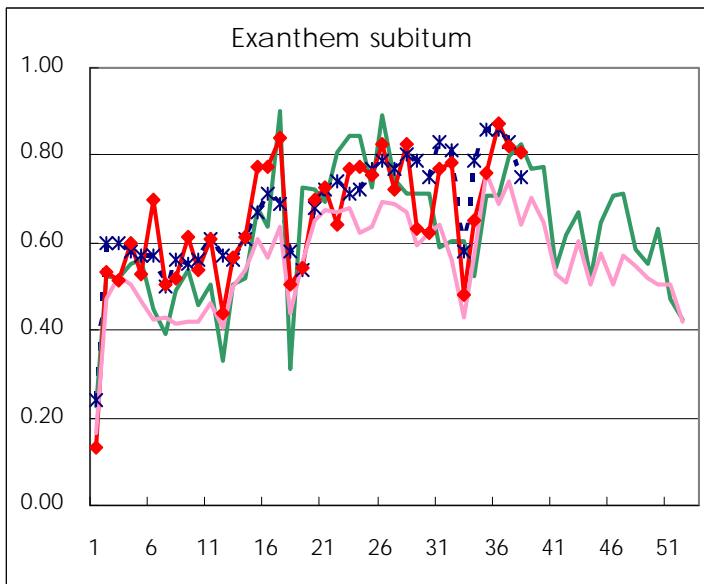
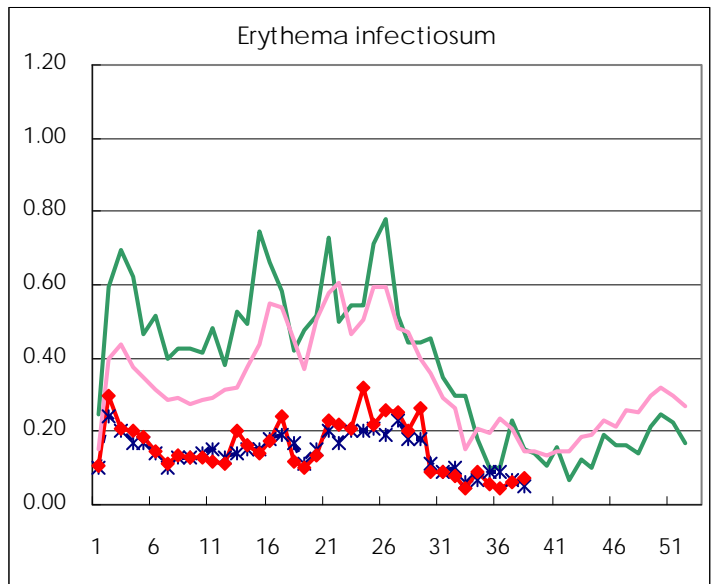
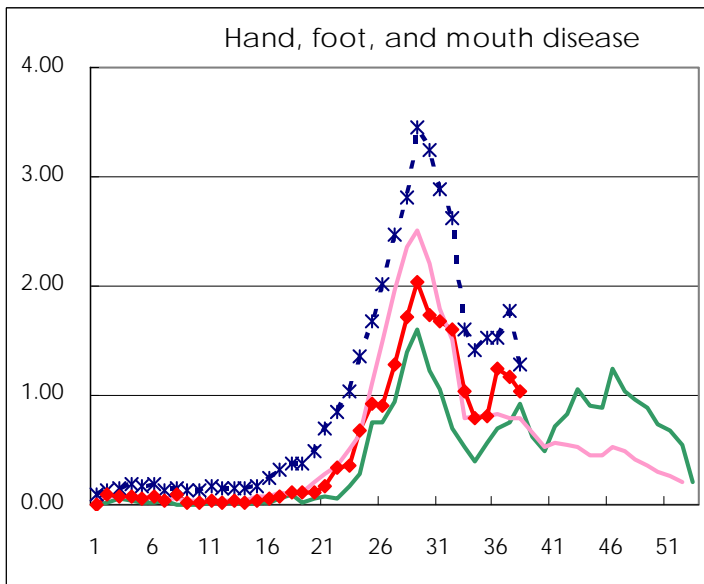
Number of patients with the diseases to be reported
by the designated clinics and hospitals

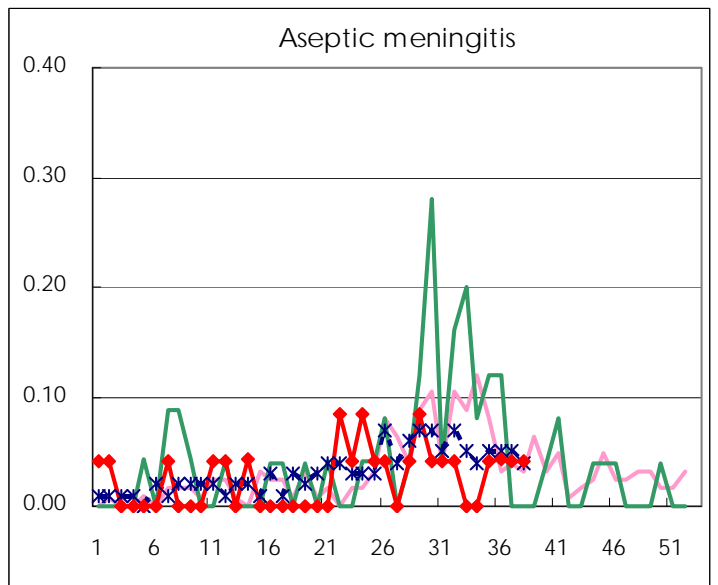
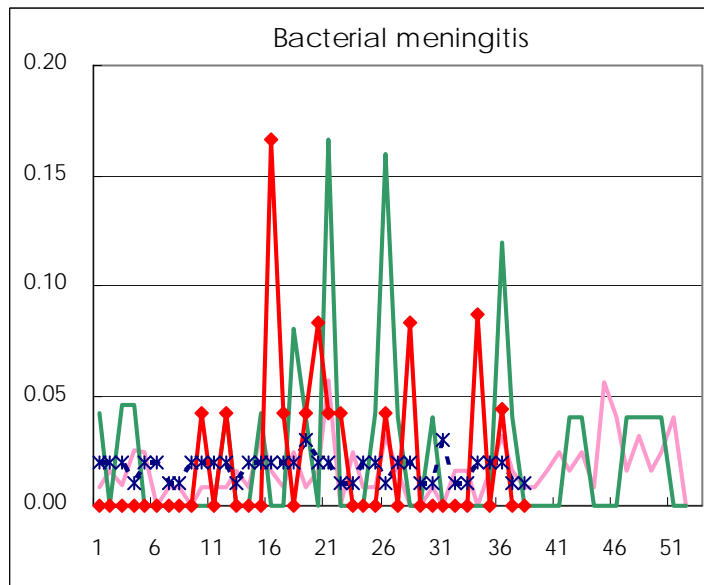
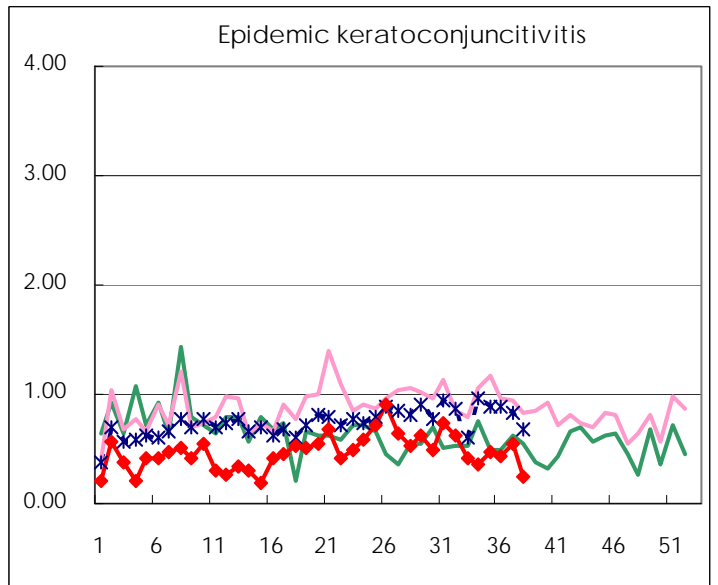
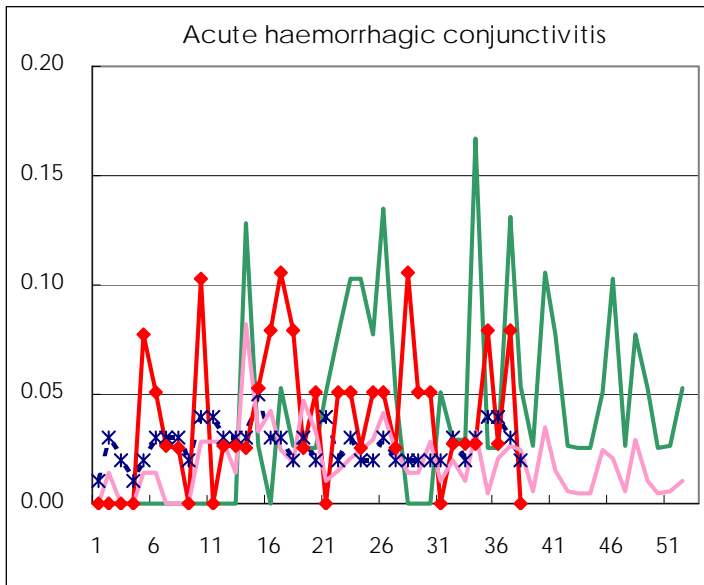
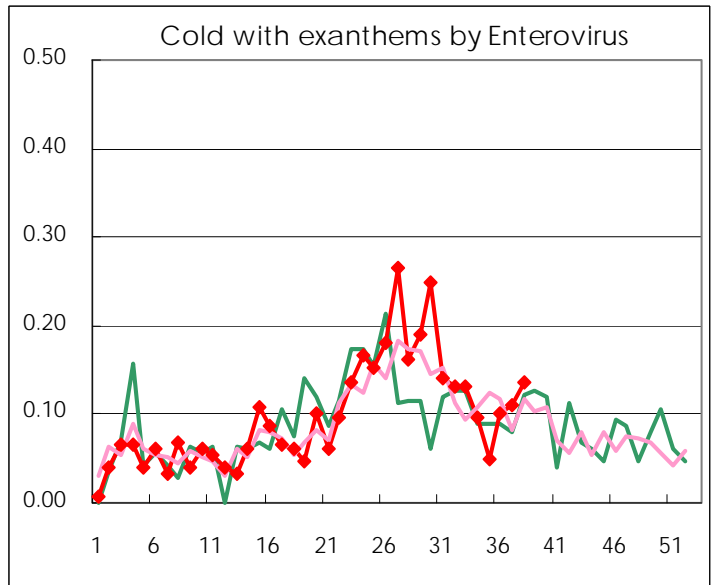
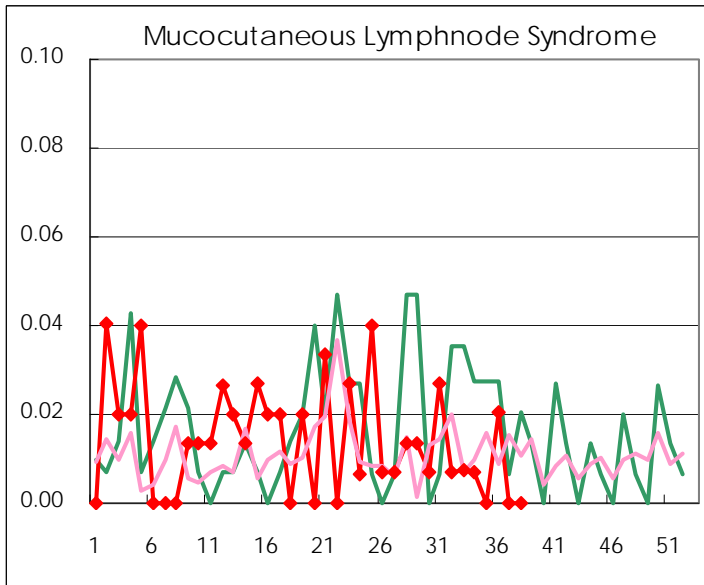
Diseases	2008				
	35th	36th	37th	38th	/sentinel
Respiratory syncytial virus infection	12	21	40	40	0.29
Pharyngoconjunctival fever	71	61	49	37	0.26
Group A streptococcal pharyngitis	96	128	128	109	0.78
Infectious gastroenteritis	423	465	486	441	3.15
Chickenpox	32	64	54	50	0.36
Hand, foot, and mouth disease	119	184	169	146	1.04
Erythema infectiosum	8	7	9	10	0.07
Exanthem subitum	110	128	119	113	0.81
Pertussis	6	5	1	3	0.02
Herpangina	191	180	137	74	0.53
Mumps	77	49	65	88	0.63
Cold with exanthems by Enterovirus	7	15	16	19	0.14
Mucocutaneous Lymphnode Syndrome		3			
Influenza	2	4	2	7	0.03
Acute hemorrhagic conjunctivitis	3	1	3		
Epidemic keratoconjunctivitis	18	16	21	9	0.24
Bacterial meningitis		1			
Aseptic meningitis	1	1	1	1	0.04
Mycoplasma pneumonia	8	7	8	6	0.25
Chlamydial pneumonia (excluding psittacosis)		1	1	1	0.04

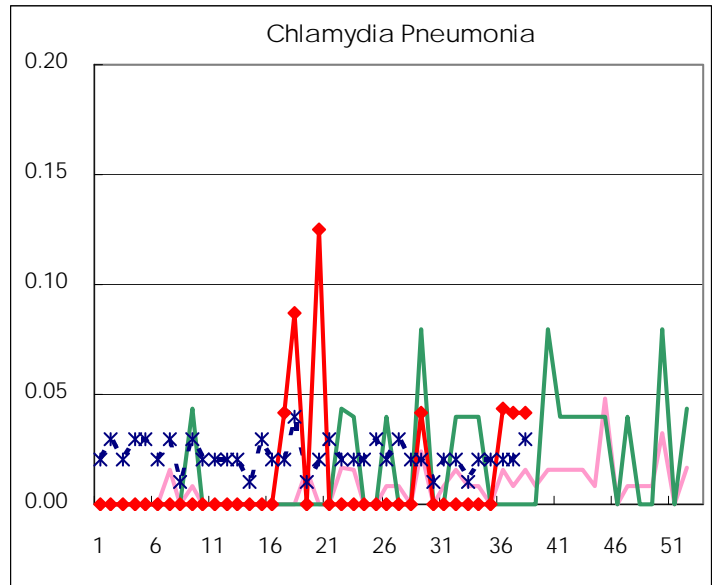
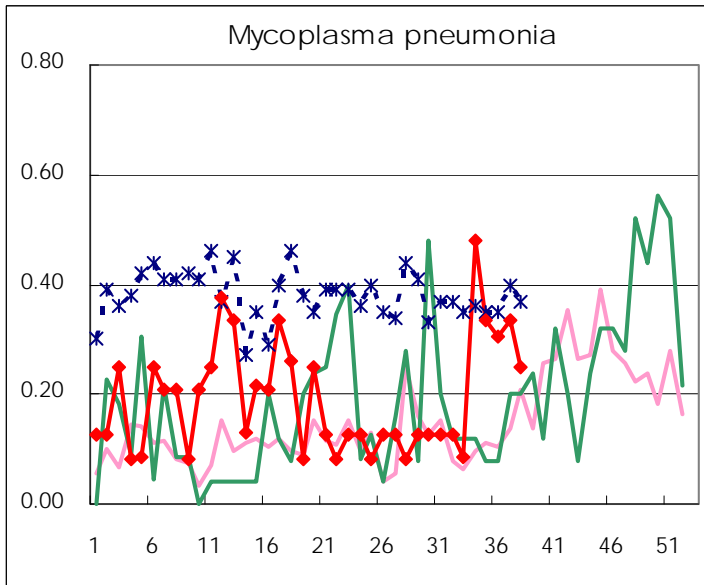
(Blank means 0.)

Disease Trend Graph (weekly reported cases per sentinel in comparison)









Number of sentinel facilities for weekly reporting		
Types of sentinels	Number of sentinels	Sentinels having reported
Pediatric	150	140
Influenza	290	271
Ophthalmic	39	38
Specially-designated	24	24

Tokyo Metropolitan Government
Infectious Disease Surveillance Center