
INFECTIOUS DISEASES WEEKLY REPORT

TOKYO IDWR

Tokyo Metropolitan Infectious Disease Surveillance Center

2 October 2008 / Number 39

Surveillance System in Tokyo, Japan

The infectious diseases which all physicians must report

All physicians must report to health centers the incidence of the diseases which are shown at page one. Health centers electronically report the individual cases to Tokyo Metropolitan Infectious Disease Surveillance Center.

The infectious diseases required to be reported by the sentinels

The numbers of patients who visit the sentinel clinics or hospitals during a week are reported to health centers in Tokyo. And they electronically report the numbers to Tokyo Metropolitan Infectious Disease Surveillance Center. We have about 400 sentinel clinics and hospitals in Tokyo.

1st Week is early January and 52nd Week is end of December.

Tokyo Metropolitan Institute of Public Health
Epidemiological Information Office

TEL:81-3-3363-3213 FAX:81-3-5332-7365

e-mail:idsc@tokyo-eiken.go.jp

URL:idsc.tokyo-eiken.go.jp/

Number of patients with the diseases which all physicians must report

Category	Diseases	Tokyo				Japan		
		36th	37th	38th	39th	Cum 2008	39th	Cum 2008
I	Ebola hemorrhagic fever							
	Crimean-Congo hemorrhagic fever							
	Smallpox							
	South American hemorrhagic fever							
	Plague							
	Marburg disease							
	Lassa fever							
II	Acute poliomyelitis							1
	Tuberculosis	69	76	46	58	3213	261	19962
	Diphtheria							
	Severe Acute Respiratory Syndrome(SARS)							
	Avian influenza H5N1							
III	Cholera					5		42
	Shigellosis	1	1	3	3	49	3	239
	Enterohemorrhagic Escherichia coli infection	22	27	13	6	311	59	3,497
	Typhoid fever	1	1		1	9	2	39
	Paratyphoid fever					5		23
IV	Hepatitis E					6		33
	West Nile fever							
	Hepatitis A	1	2			25	1	141
	Echinococcosis							10
	Yellow fever							
	Psittacosis							5
	Omsk hemorrhagic fever							
	Relapsing fever							
	Kyasanur forest disease							
	Q fever					1		2
	Rabies							
	Coccidioidomycosis							2
	Monkeypox							
	Hemorrhagic fever with renal syndrome							
	Western equine encephalitis							
	Tick-borne encephalitis							
	Anthrax							
	Scrub typhus(Tsutsugamushi disease)					5	1	124
	Dengue fever	5				23	2	68
	Eastern equine encephalitis							
	Avian influenza (excluding H5N1)							
	Nipah virus infection							
	Japanese spotted fever						5	60
	Japanese encephalitis						1	2
	Epidemic typhus							
	Hantavirus pulmonary syndrome							
	Herpes B virus infection							
	Glanders							
	Brucellosis							4
	Venezuelan equine encephalitis							
	Hendra virus infection							
	Botulism						1	2
Malaria	1	3		1	19	3	40	
Tularemia							4	
Lyme disease							4	
Lyssavirus infection(excluding rabies)								
Rift valley fever								
Melioidosis								
Legionellosis	2	2		1	59	12	667	
Leptospirosis	1		1	1	3	1	14	
Rocky mountain spotted fever								

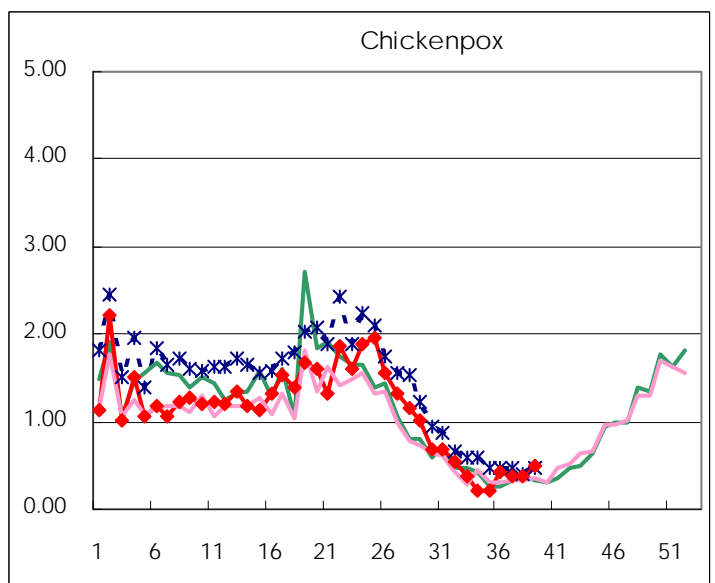
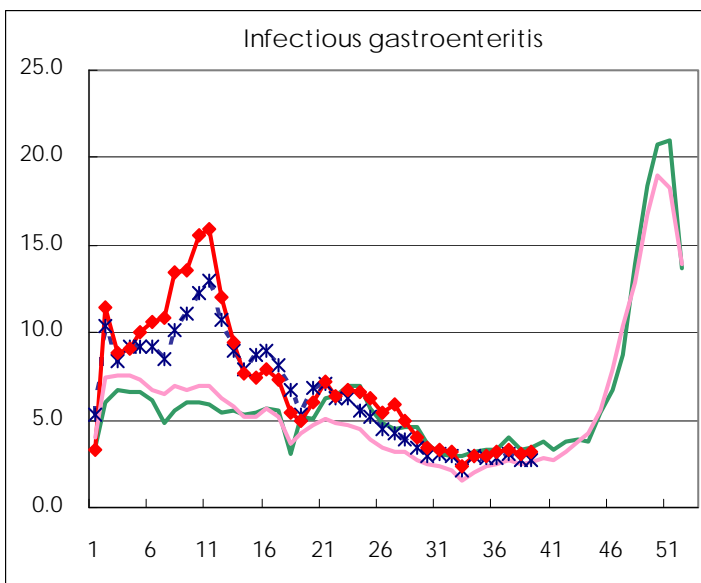
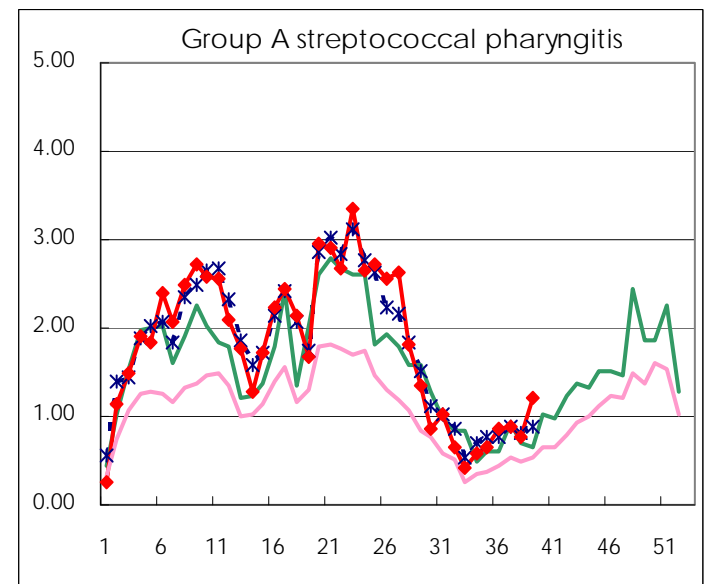
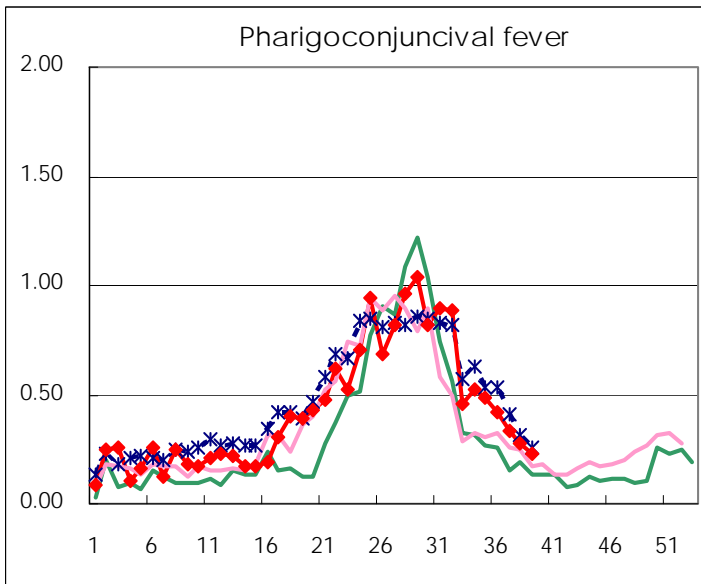
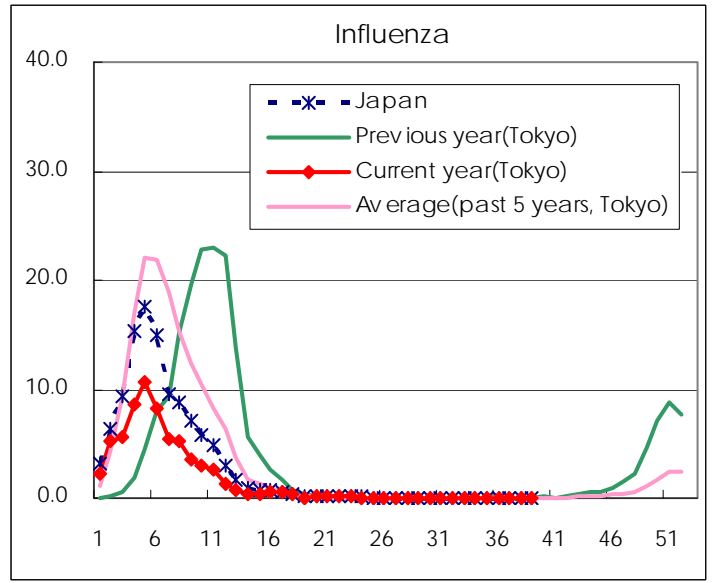
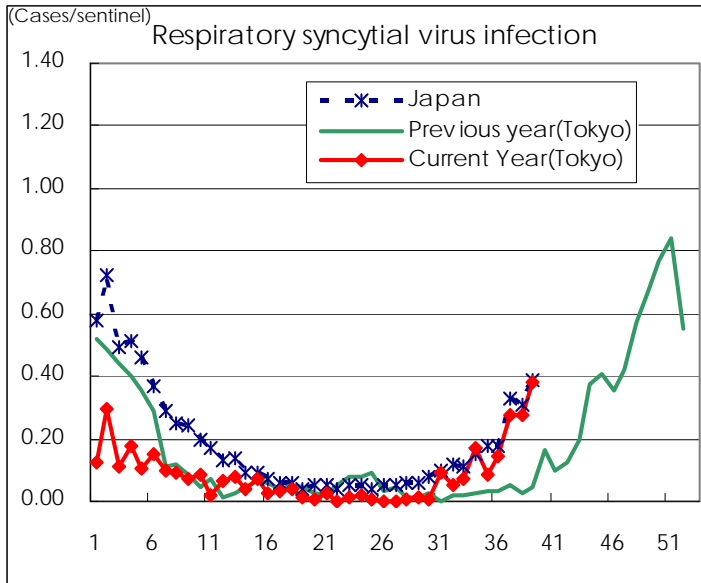
Category	Diseases	Tokyo					Japan	
		36th	37th	38th	39th	Cum 2008	39th	Cum 2008
V	Amebiasis	3	3	3	5	144	10	640
	Viral hepatitis(excluding hepatitis A and E)			1		24	1	171
	Acute encephalitis(excluding JE and WNE)					7	1	143
	Cryptosporidiosis			1		3		7
	Creutzfeldt-Jakob disease			1		12	1	113
	Severe invasive streptococcal infections(TSLS)		1			18	1	93
	Acquired immunodeficiency syndrome (AIDS)	8	7	12	6	401	17	1,111
	Giardiasis	1		1		19		62
	Meningococcal meningitis					2		10
	Congenital rubella syndrome							1
	Syphilis	10	3	1	4	149	5	614
	Tetanus					4	1	88
	Vancomycin-resistant S. aureus infection							
	Vancomycin-resistant Enterococcus infection					10		62
	Rubella			1	1	39	1	276
	Measles	5	4	2	1	1,149	12	10,810

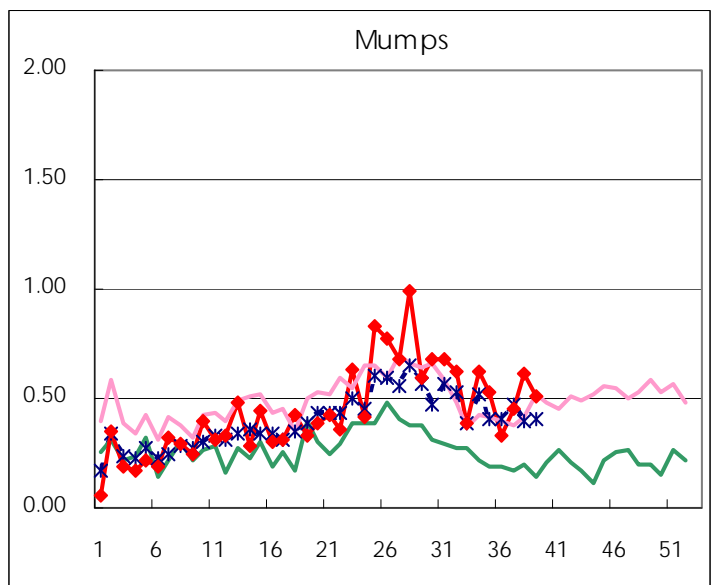
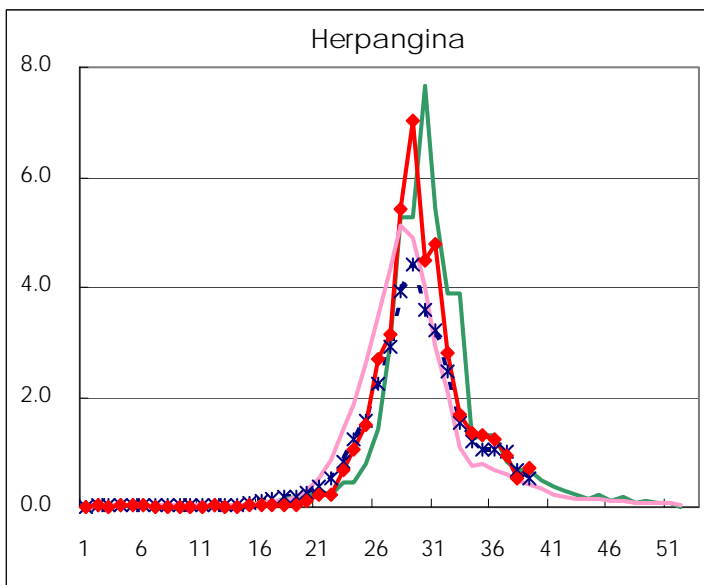
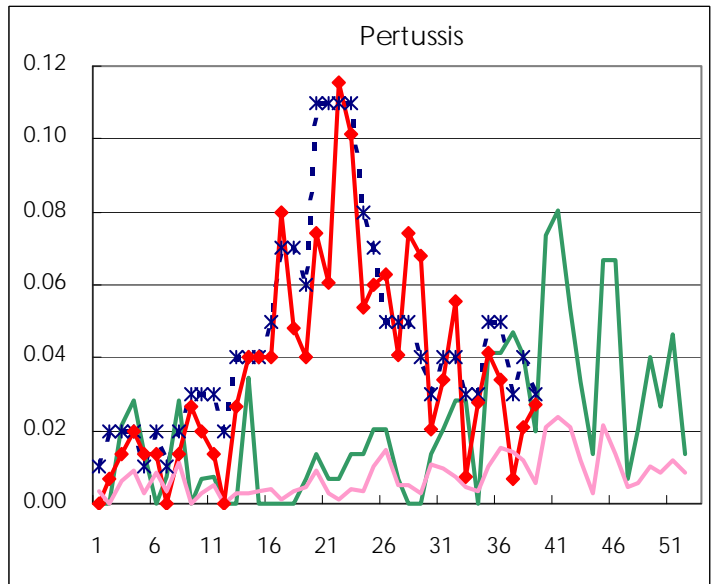
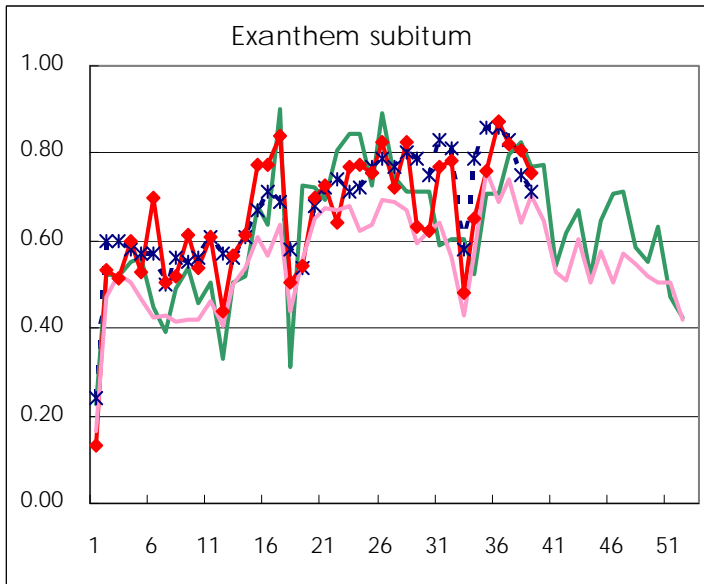
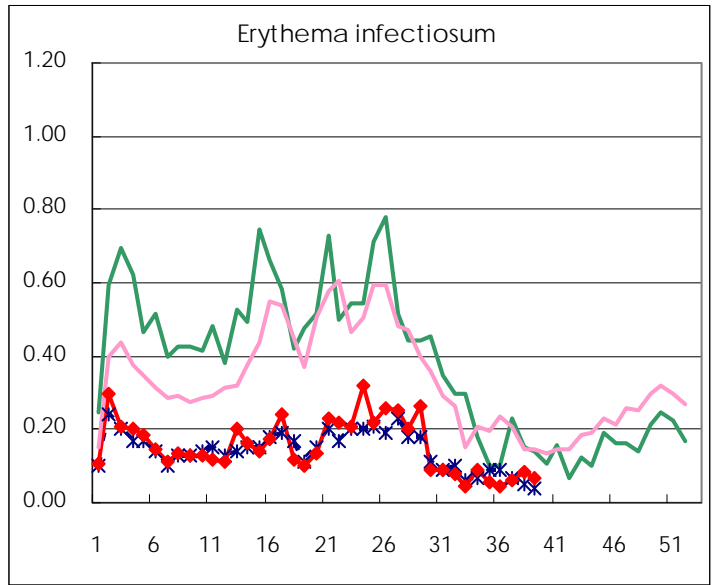
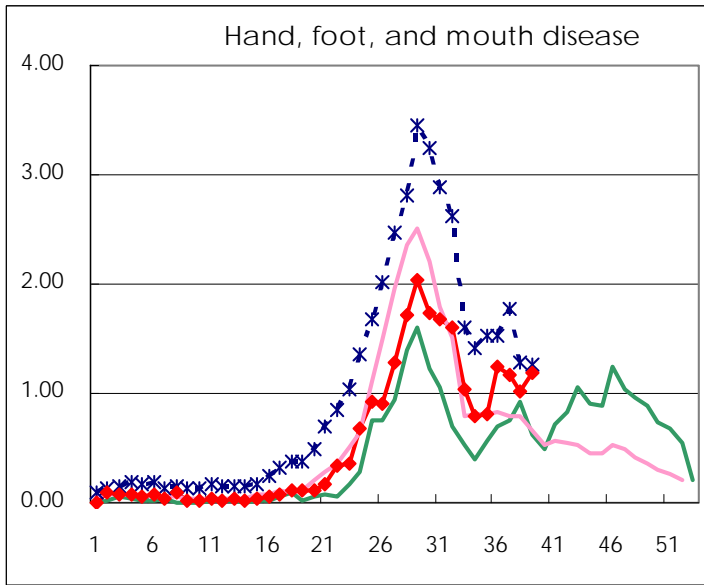
Number of patients with the diseases to be reported
by the designated clinics and hospitals

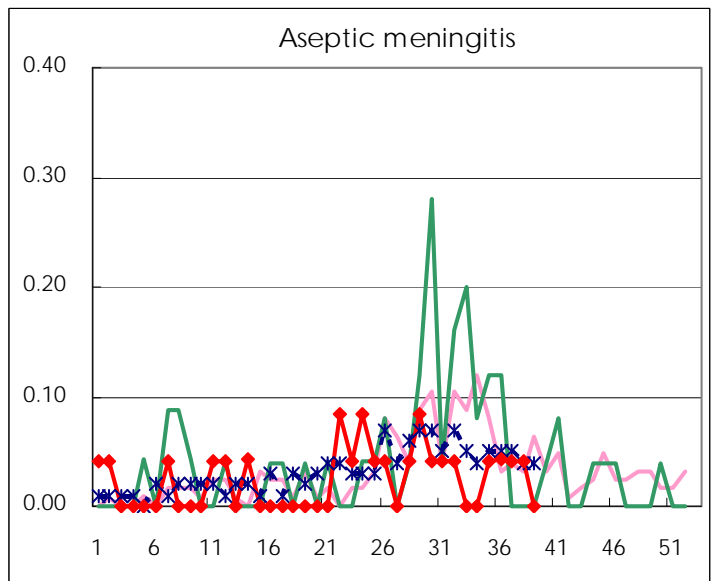
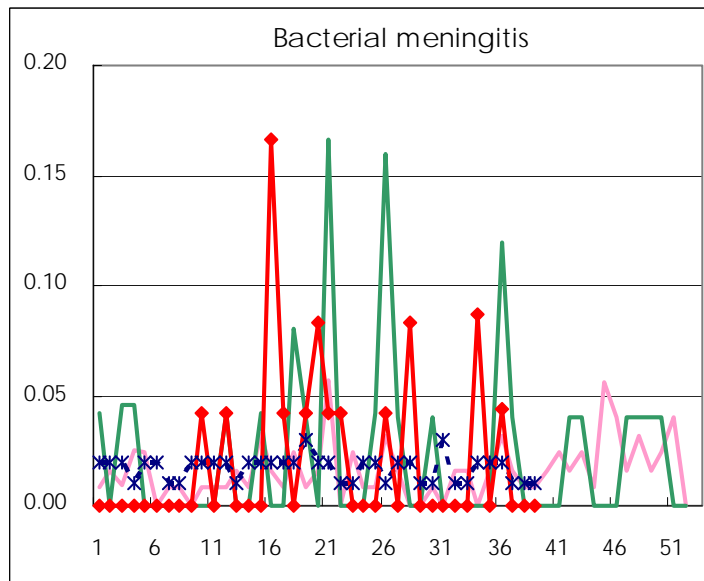
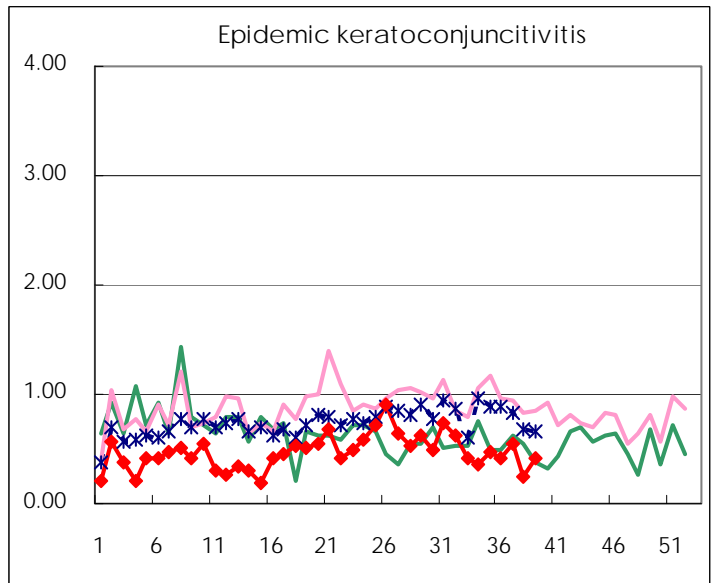
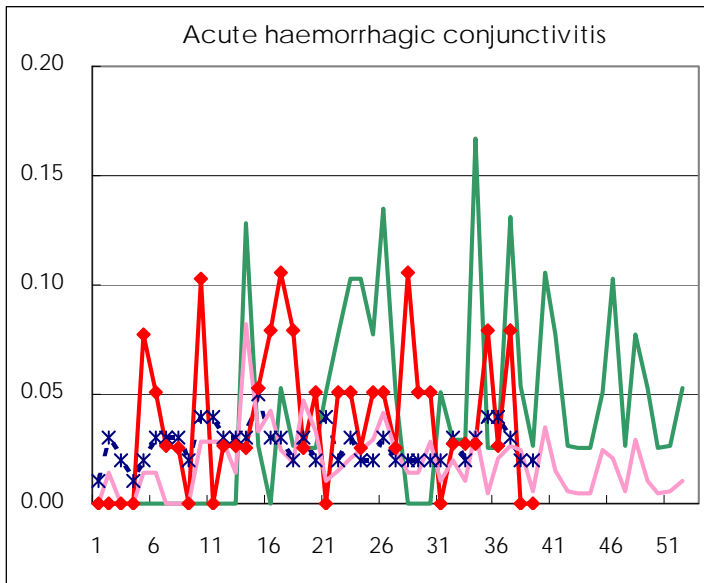
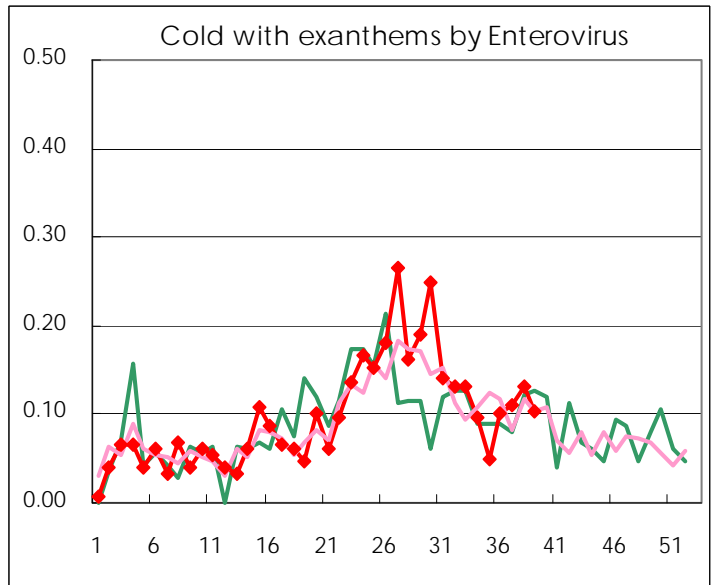
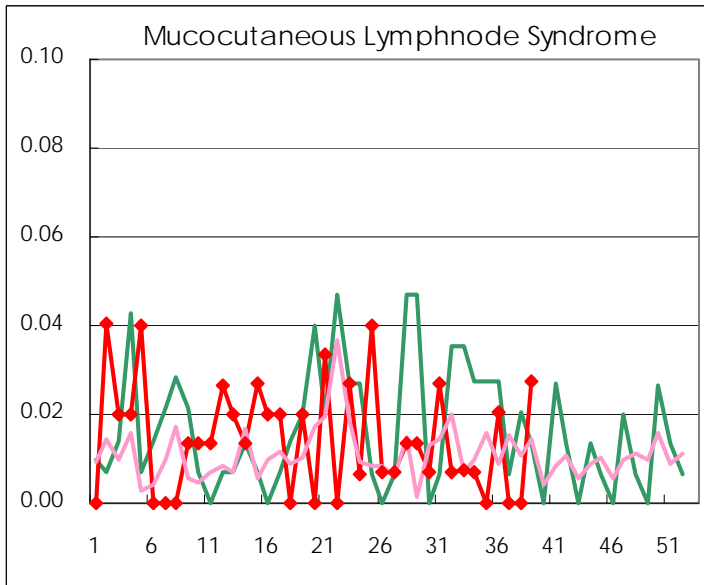
Diseases	2008				
	36th	37th	38th	39th	/sentinel
Respiratory syncytial virus infection	21	40	40	56	0.38
Pharyngoconjunctival fever	61	49	40	33	0.23
Group A streptococcal pharyngitis	128	128	110	177	1.21
Infectious gastroenteritis	465	486	444	470	3.22
Chickenpox	64	54	54	74	0.51
Hand, foot, and mouth disease	184	169	146	174	1.19
Erythema infectiosum	7	9	12	10	0.07
Exanthem subitum	128	119	116	110	0.75
Pertussis	5	1	3	4	0.03
Herpangina	180	137	74	101	0.69
Mumps	49	65	88	75	0.51
Cold with exanthems by Enterovirus	15	16	19	15	0.10
Mucocutaneous Lymphnode Syndrome	3			4	0.03
Influenza	4	2	7	10	0.04
Acute hemorrhagic conjunctivitis	1	3			
Epidemic keratoconjunctivitis	16	21	9	16	0.42
Bacterial meningitis	1				
Aseptic meningitis	1	1	1		
Mycoplasma pneumonia	7	8	6	9	0.41
Chlamydial pneumonia (excluding psittacosis)	1	1	1	1	0.05

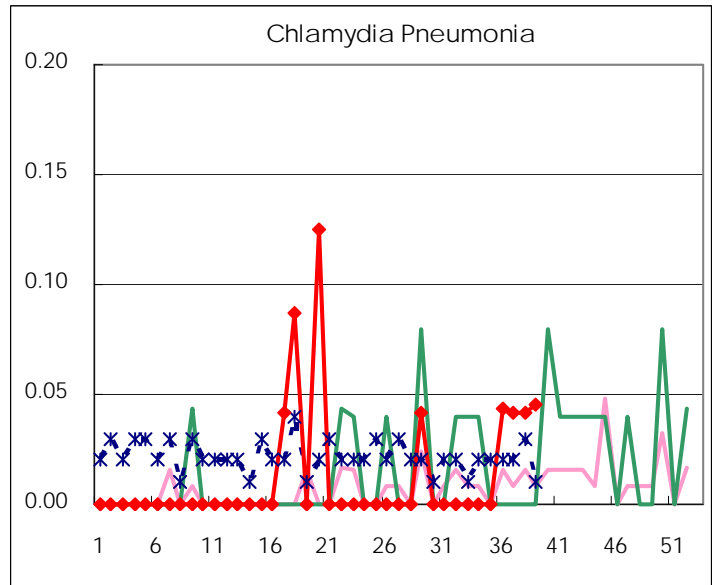
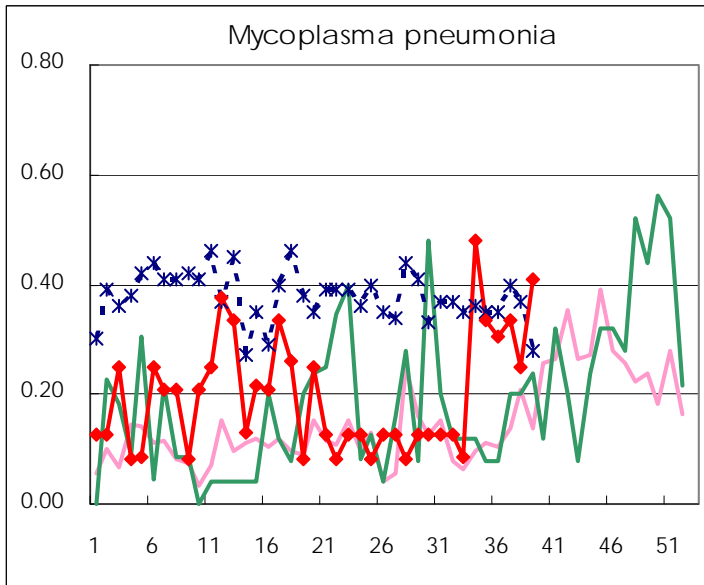
(Blank means 0.)

Disease Trend Graph (weekly reported cases per sentinel in comparison)









Number of sentinel facilities for weekly reporting		
Types of sentinels	Number of sentinels	Sentinels having reported
Pediatric	150	146
Influenza	290	283
Ophthalmic	39	38
Specially-designated	24	22

Tokyo Metropolitan Government
Infectious Disease Surveillance Center