
INFECTIOUS DISEASES WEEKLY REPORT

TOKYO IDWR

Tokyo Metropolitan Infectious Disease Surveillance Center

9 October 2008 / Number 40

Surveillance System in Tokyo, Japan

The infectious diseases which all physicians must report

All physicians must report to health centers the incidence of the diseases which are shown at page one. Health centers electronically report the individual cases to Tokyo Metropolitan Infectious Disease Surveillance Center.

The infectious diseases required to be reported by the sentinels

The numbers of patients who visit the sentinel clinics or hospitals during a week are reported to health centers in Tokyo. And they electronically report the numbers to Tokyo Metropolitan Infectious Disease Surveillance Center. We have about 400 sentinel clinics and hospitals in Tokyo.

1st Week is early January and 52nd Week is end of December.

Tokyo Metropolitan Institute of Public Health
Epidemiological Information Office

TEL:81-3-3363-3213 FAX:81-3-5332-7365

e-mail:idsc@tokyo-eiken.go.jp

URL:idsc.tokyo-eiken.go.jp/

Number of patients with the diseases which all physicians must report

Category	Diseases	Tokyo				Cum 2008	Japan	
		37th	38th	39th	40th		40th	Cum 2008
I	Ebola hemorrhagic fever							
	Crimean-Congo hemorrhagic fever							
	Smallpox							
	South American hemorrhagic fever							
	Plague							
	Marburg disease							
	Lassa fever							
II	Acute poliomyelitis							1
	Tuberculosis	83	50	73	46	3311	336	20611
	Diphtheria							
	Severe Acute Respiratory Syndrome(SARS)							
	Avian influenza H5N1							
III	Cholera					5		43
	Shigellosis	1	3	3	2	51	6	245
	Enterohemorrhagic Escherichia coli infection	27	14	6	8	320	74	3,589
	Typhoid fever	1		1		9	4	43
	Paratyphoid fever					5	1	25
IV	Hepatitis E					6	1	34
	West Nile fever							
	Hepatitis A	2			1	26	4	145
	Echinococcosis							12
	Yellow fever							
	Psittacosis						1	6
	Omsk hemorrhagic fever							
	Relapsing fever							
	Kyasanur forest disease							
	Q fever					1	1	3
	Rabies							
	Coccidioidomycosis							2
	Monkeypox							
	Hemorrhagic fever with renal syndrome							
	Western equine encephalitis							
	Tick-borne encephalitis							
	Anthrax							
	Scrub typhus(Tsutsugamushi disease)					5		124
	Dengue fever				2	25	8	78
	Eastern equine encephalitis							
	Avian influenza (excluding H5N1)							
	Nipah virus infection							
	Japanese spotted fever						6	66
	Japanese encephalitis							2
	Epidemic typhus							
	Hantavirus pulmonary syndrome							
	Herpes B virus infection							
	Glanders							
	Brucellosis							4
	Venezuelan equine encephalitis							
	Hendra virus infection							
Botulism							2	
Malaria	3		1		19	2	42	
Tularemia							4	
Lyme disease							4	
Lyssavirus infection(excluding rabies)								
Rift valley fever								
Melioidosis								
Legionellosis	2		1	4	63	15	690	
Leptospirosis		1	1		3	2	23	
Rocky mountain spotted fever								

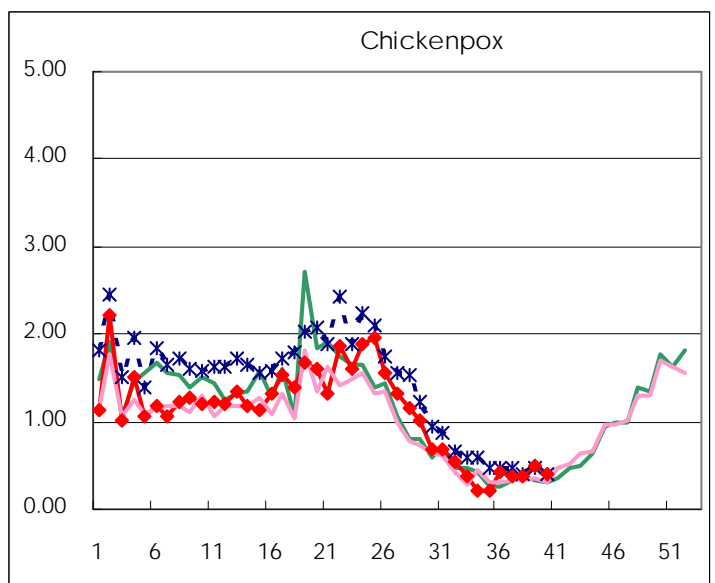
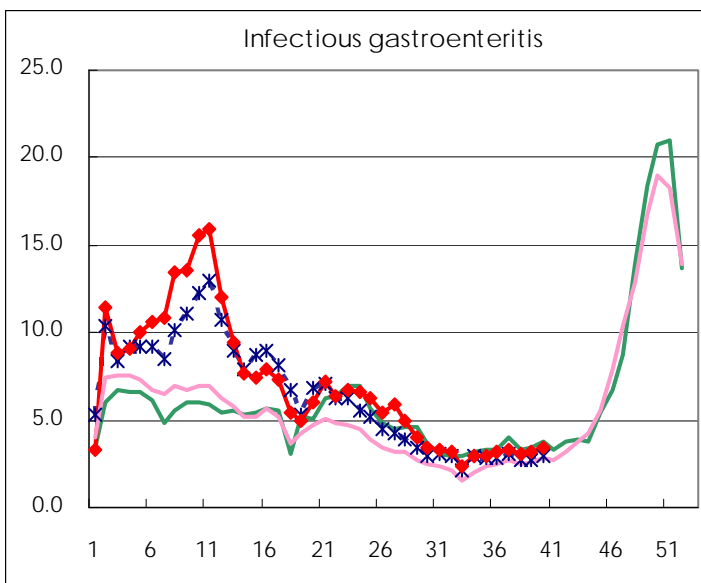
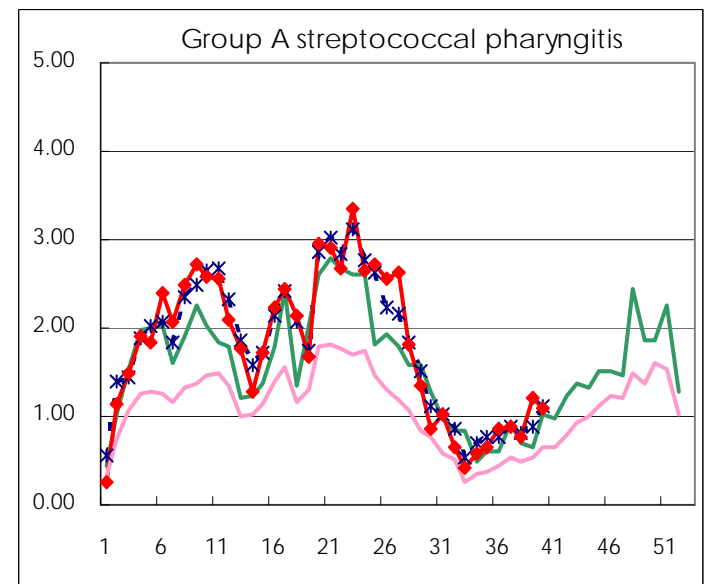
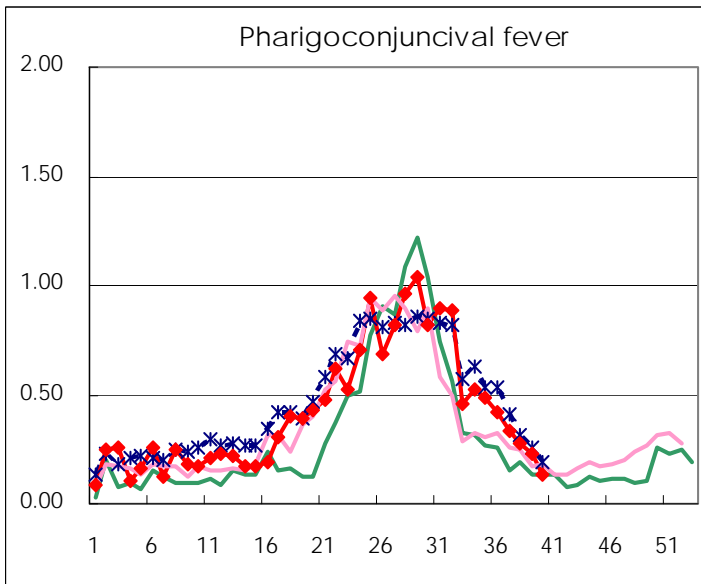
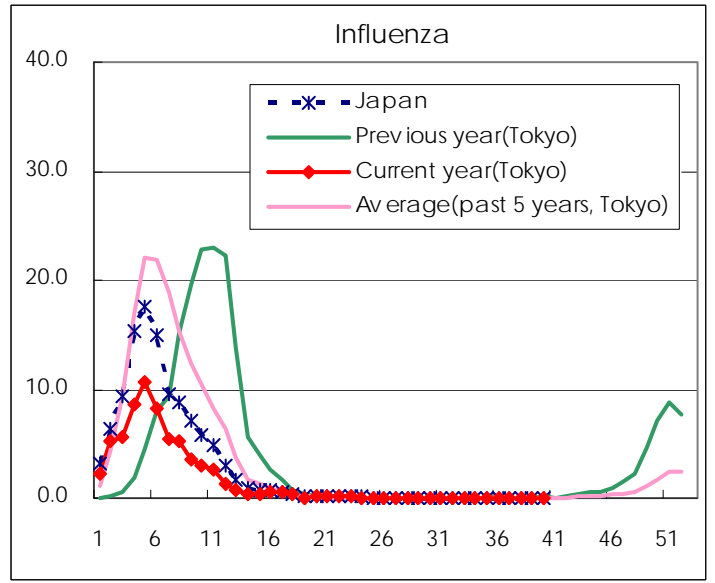
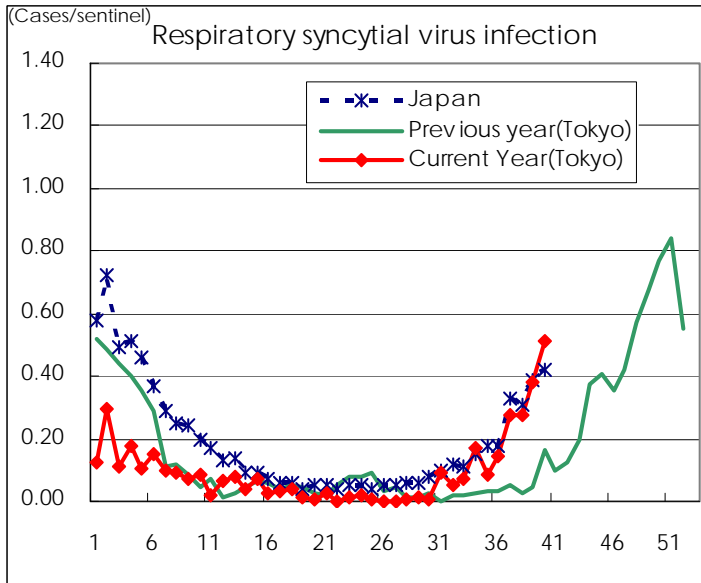
Category	Diseases	Tokyo					Japan	
		37th	38th	39th	40th	Cum 2008	40th	Cum 2008
V	Amebiasis	3	3	5	5	149	11	657
	Viral hepatitis(excluding hepatitis A and E)		1		1	25	3	176
	Acute encephalitis(excluding JE and WNE)				1	8	4	147
	Cryptosporidiosis		1			3		7
	Creutzfeldt-Jakob disease		1			12		116
	Severe invasive streptococcal infections(TSLS)	1			1	19	2	97
	Acquired immunodeficiency syndrome (AIDS)	7	12	6	14	415	21	1,170
	Giardiasis		1			19	1	64
	Meningococcal meningitis					2		10
	Congenital rubella syndrome							1
	Syphilis	3	1	4	3	152	11	628
	Tetanus				1	5	1	93
	Vancomycin-resistant S. aureus infection							
	Vancomycin-resistant Enterococcus infection					10	3	66
	Rubella		1	1		39	1	277
	Measles	4	2	1	3	1,152	16	10,829

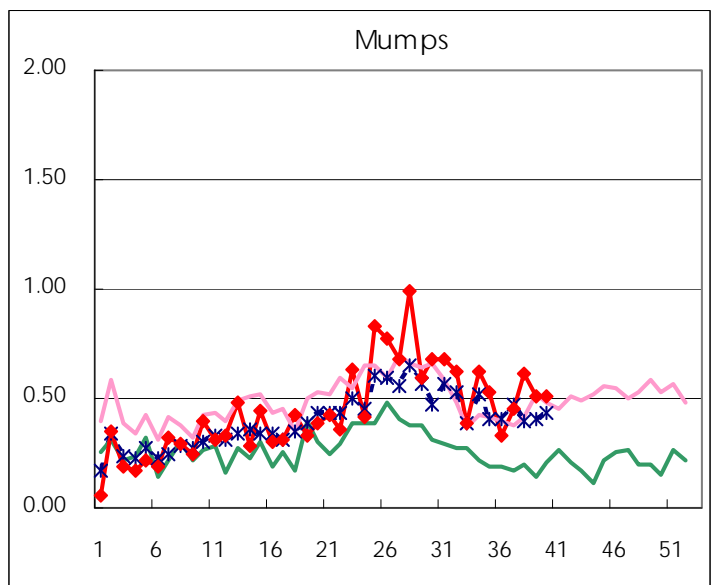
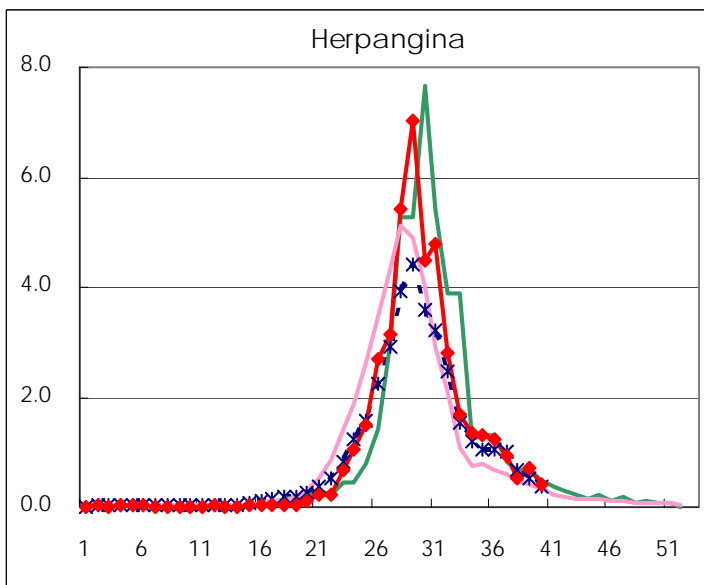
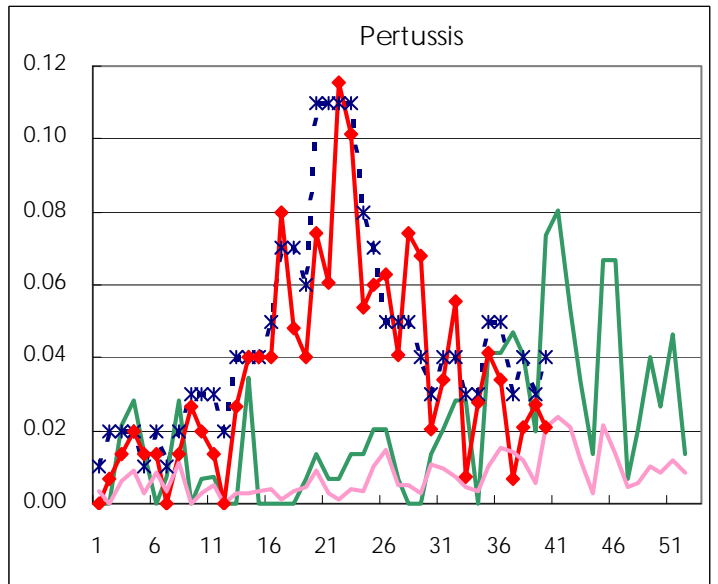
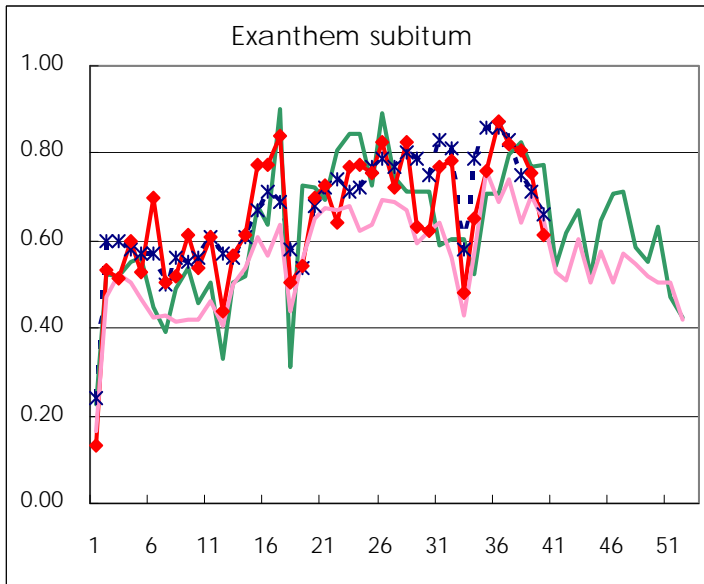
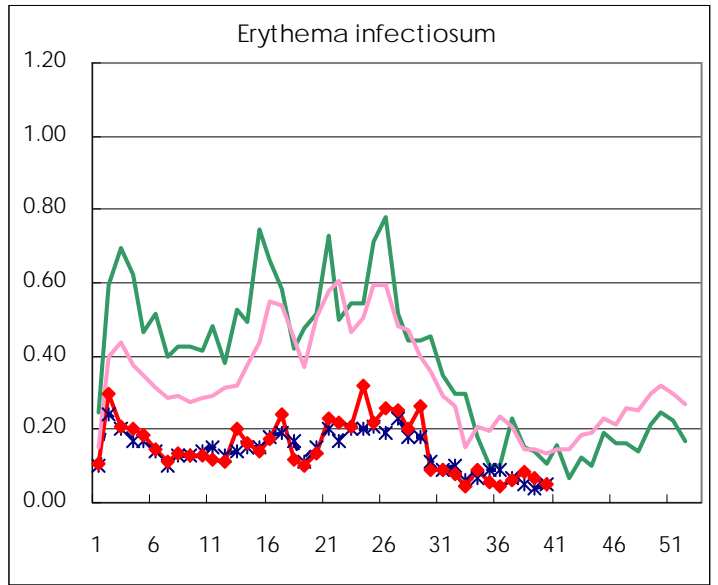
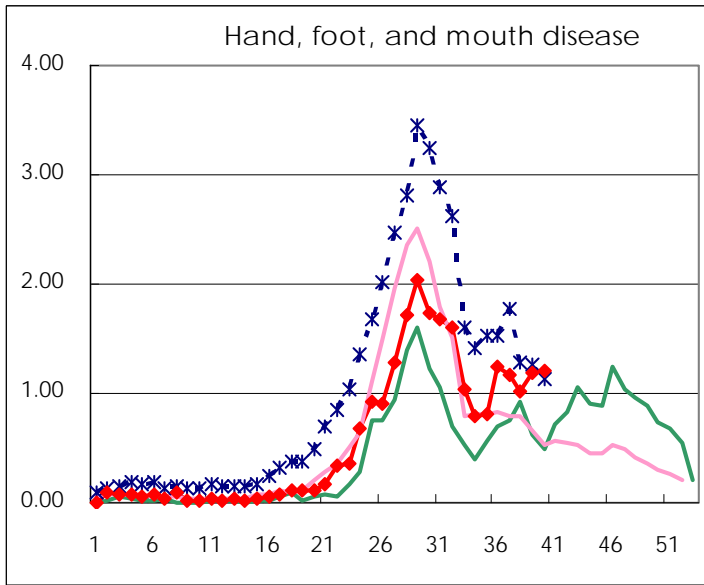
Number of patients with the diseases to be reported
by the designated clinics and hospitals

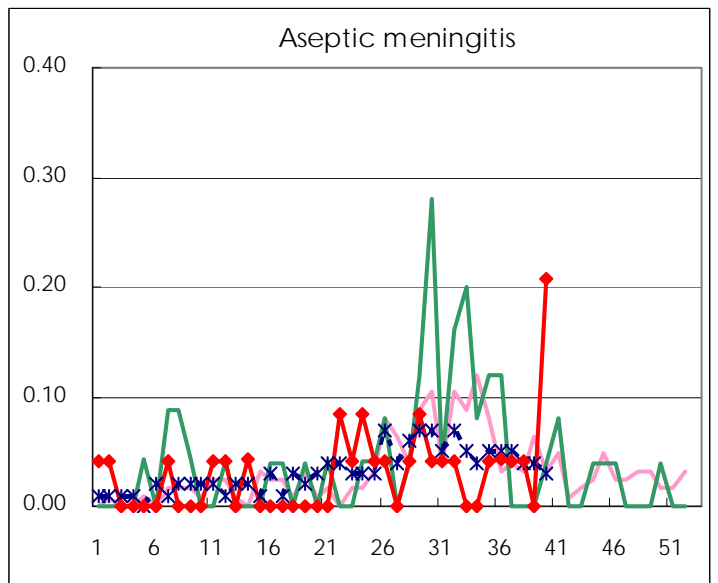
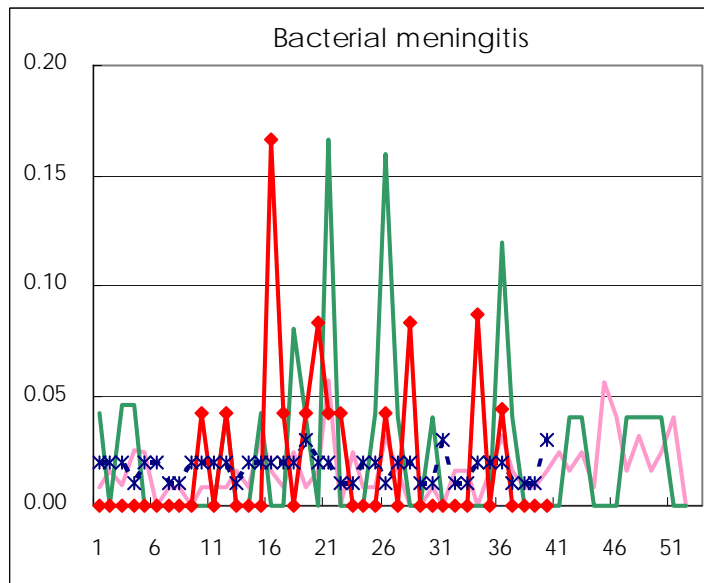
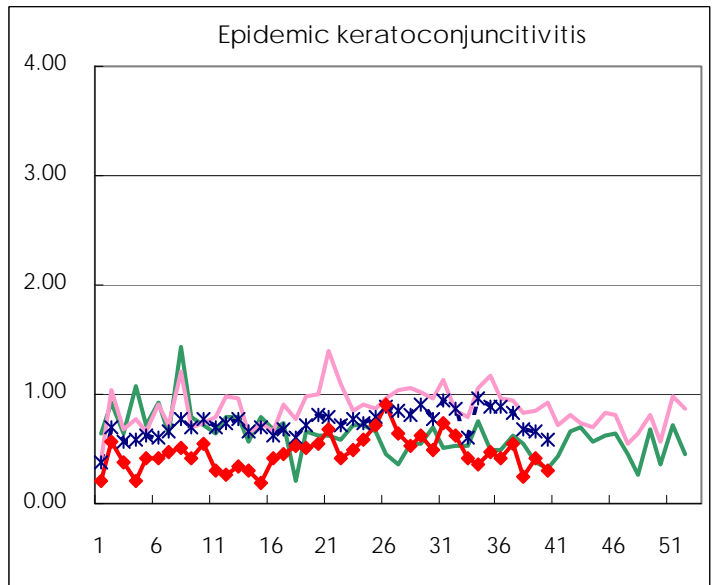
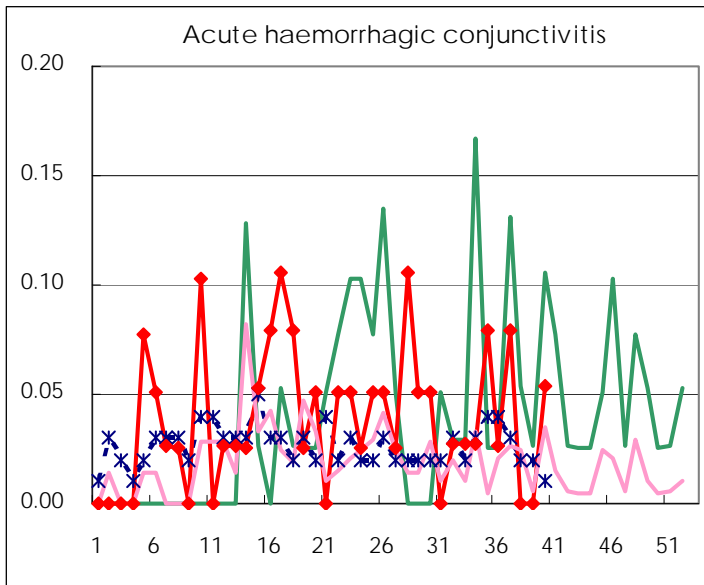
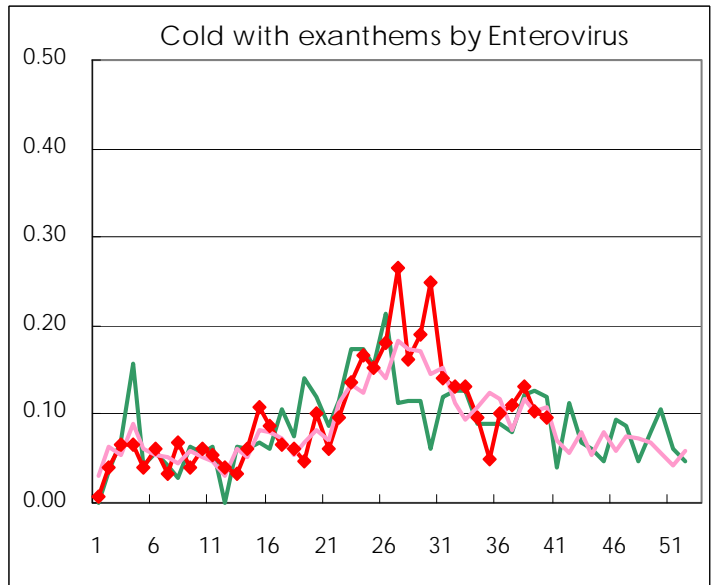
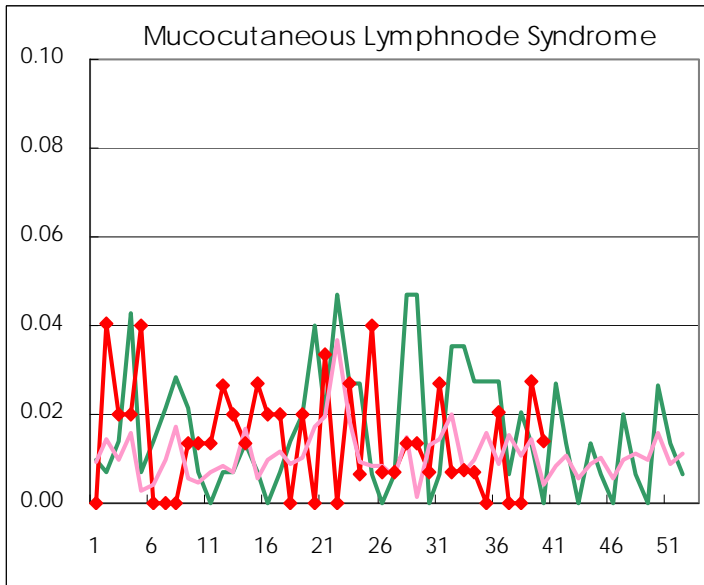
Diseases	2008				
	37th	38th	39th	40th	/sentinel
Respiratory syncytial virus infection	40	40	56	74	0.51
Pharyngoconjunctival fever	49	40	33	19	0.13
Group A streptococcal pharyngitis	128	110	177	160	1.10
Infectious gastroenteritis	486	444	470	500	3.45
Chickenpox	54	54	74	57	0.39
Hand, foot, and mouth disease	169	146	174	176	1.21
Erythema infectiosum	9	12	10	7	0.05
Exanthem subitum	119	116	110	89	0.61
Pertussis	1	3	4	3	0.02
Herpangina	137	74	101	58	0.40
Mumps	65	88	75	74	0.51
Cold with exanthems by Enterovirus	16	19	15	14	0.10
Mucocutaneous Lymphnode Syndrome			4	2	0.01
Influenza	2	7	10	5	0.02
Acute hemorrhagic conjunctivitis	3			2	0.05
Epidemic keratoconjunctivitis	21	9	16	11	0.30
Bacterial meningitis					
Aseptic meningitis	1	1		5	0.21
Mycoplasma pneumonia	8	6	9	4	0.17
Chlamydial pneumonia (excluding psittacosis)	1	1	1		

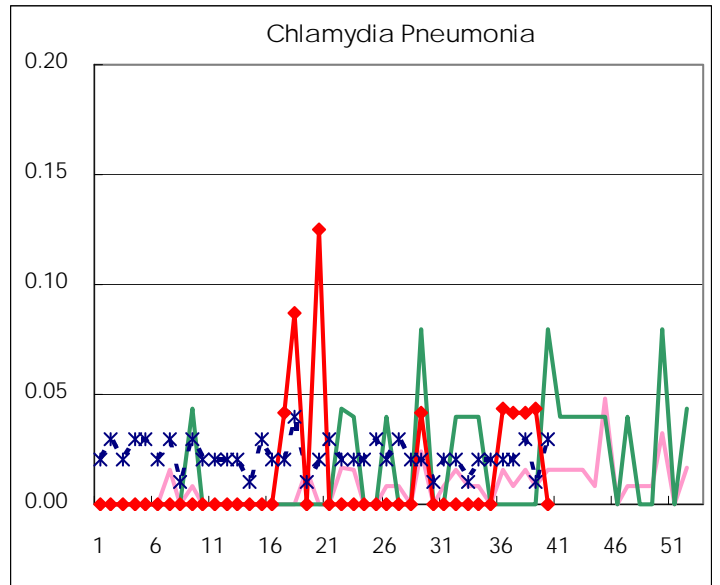
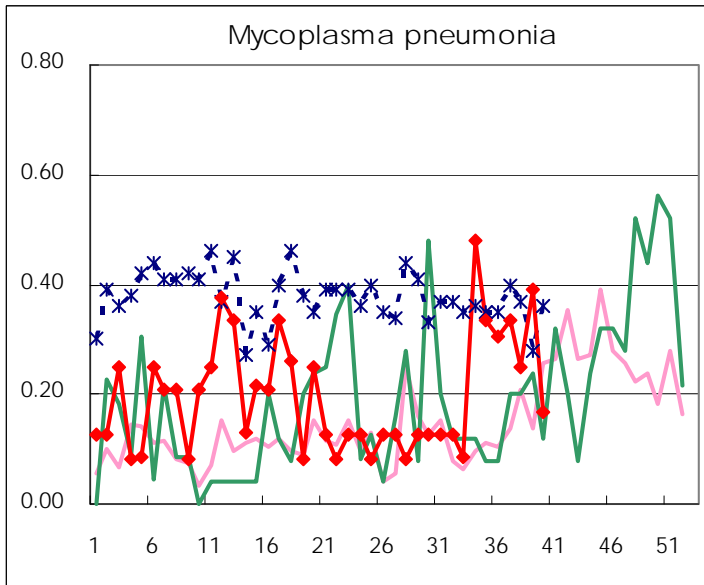
(Blank means 0.)

Disease Trend Graph (weekly reported cases per sentinel in comparison)









Number of sentinel facilities for weekly reporting		
Types of sentinels	Number of sentinels	Sentinels having reported
Pediatric	150	145
Influenza	290	280
Ophthalmic	39	37
Specially-designated	24	24

Tokyo Metropolitan Government
Infectious Disease Surveillance Center