
INFECTIOUS DISEASES WEEKLY REPORT

TOKYO IDWR

Tokyo Metropolitan Infectious Disease Surveillance Center

23 October 2008 / Number 42

Surveillance System in Tokyo, Japan

The infectious diseases which all physicians must report

All physicians must report to health centers the incidence of the diseases which are shown at page one. Health centers electronically report the individual cases to Tokyo Metropolitan Infectious Disease Surveillance Center.

The infectious diseases required to be reported by the sentinels

The numbers of patients who visit the sentinel clinics or hospitals during a week are reported to health centers in Tokyo. And they electronically report the numbers to Tokyo Metropolitan Infectious Disease Surveillance Center. We have about 400 sentinel clinics and hospitals in Tokyo.

1st Week is early January and 52nd Week is end of December.

Tokyo Metropolitan Institute of Public Health
Epidemiological Information Office

TEL:81-3-3363-3213 FAX:81-3-5332-7365

e-mail:idsc@tokyo-eiken.go.jp

URL:idsc.tokyo-eiken.go.jp/

Number of patients with the diseases which all physicians must report

Category	Diseases	Tokyo				Japan	
		39th	40th	41st	42nd	Cum 2008	Cum 2008
I	Ebola hemorrhagic fever						
	Crimean-Congo hemorrhagic fever						
	Smallpox						
	South American hemorrhagic fever						
	Plague						
	Marburg disease						
	Lassa fever						
II	Acute poliomyelitis						1
	Tuberculosis	79	61	55	28	3437	21661
	Diphtheria						
	Severe Acute Respiratory Syndrome(SARS)						
	Avian influenza H5N1						
III	Cholera			1		6	45
	Shigellosis	3	2	2	1	54	254
	Enterohemorrhagic Escherichia coli infection	6	8	7	34	361	3,801
	Typhoid fever	1		1	1	11	48
	Paratyphoid fever					5	25
IV	Hepatitis E					6	36
	West Nile fever						
	Hepatitis A		1			26	148
	Echinococcosis						13
	Yellow fever						
	Psittacosis						7
	Omsk hemorrhagic fever						
	Relapsing fever						
	Kyasanur forest disease						
	Q fever					1	3
	Rabies						
	Coccidioidomycosis						2
	Monkeypox						
	Hemorrhagic fever with renal syndrome						
	Western equine encephalitis						
	Tick-borne encephalitis						
	Anthrax						
	Scrub typhus(Tsutsugamushi disease)					5	128
	Dengue fever		2			25	81
	Eastern equine encephalitis						
	Avian influenza (excluding H5N1)						
	Nipah virus infection						
	Japanese spotted fever						74
	Japanese encephalitis						2
	Epidemic typhus						
	Hantavirus pulmonary syndrome						
	Herpes B virus infection						
	Glanders						
	Brucellosis						4
	Venezuelan equine encephalitis						
	Hendra virus infection						
	Botulism						2
Malaria	1		1	1	21	47	
Tularemia						4	
Lyme disease						4	
Lyssavirus infection(excluding rabies)							
Rift valley fever							
Melioidosis							
Legionellosis	1	4	2	1	66	717	
Leptospirosis	1				3	32	
Rocky mountain spotted fever							

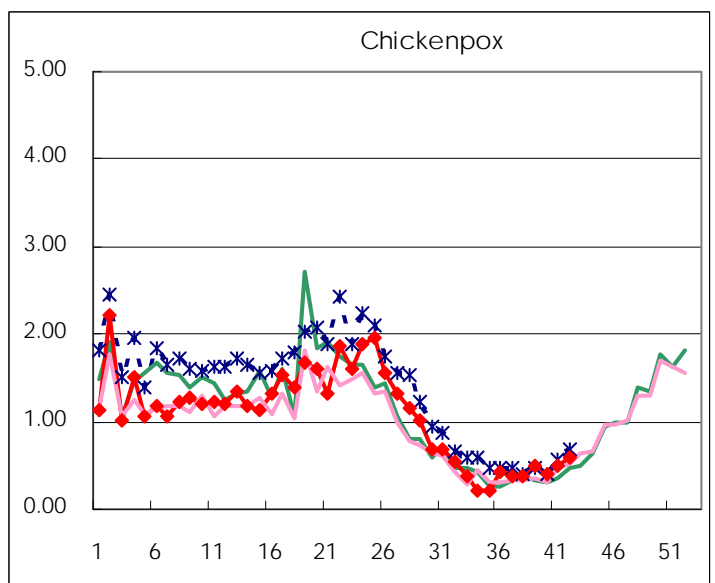
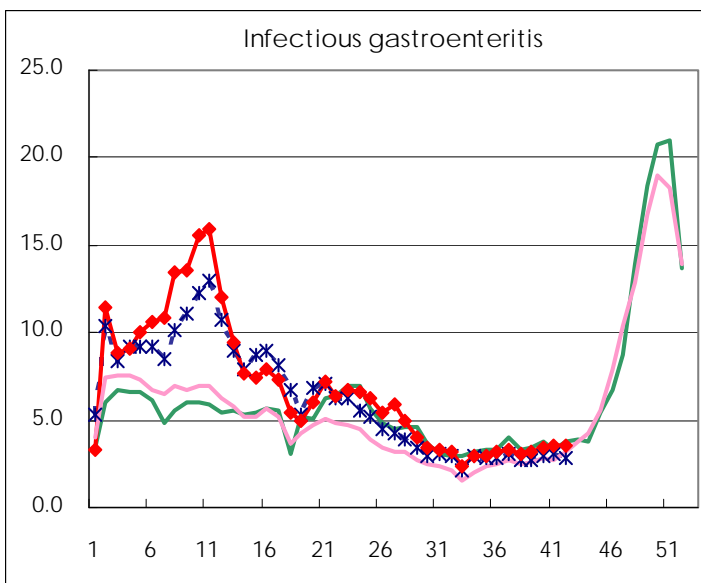
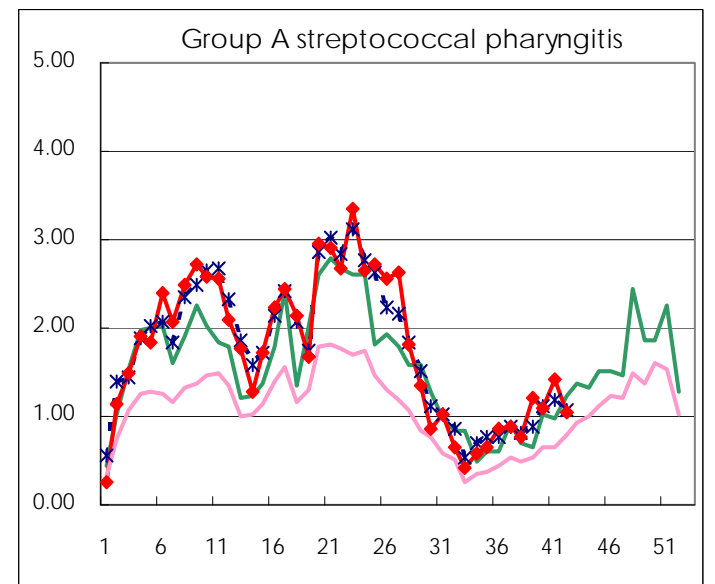
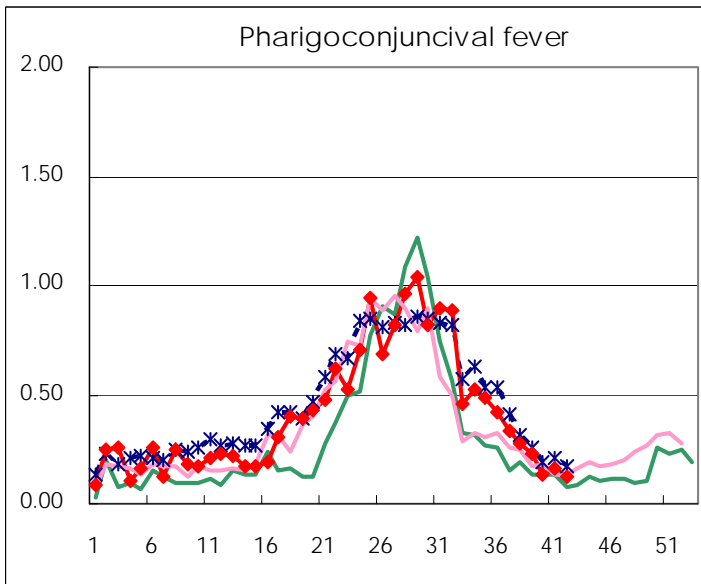
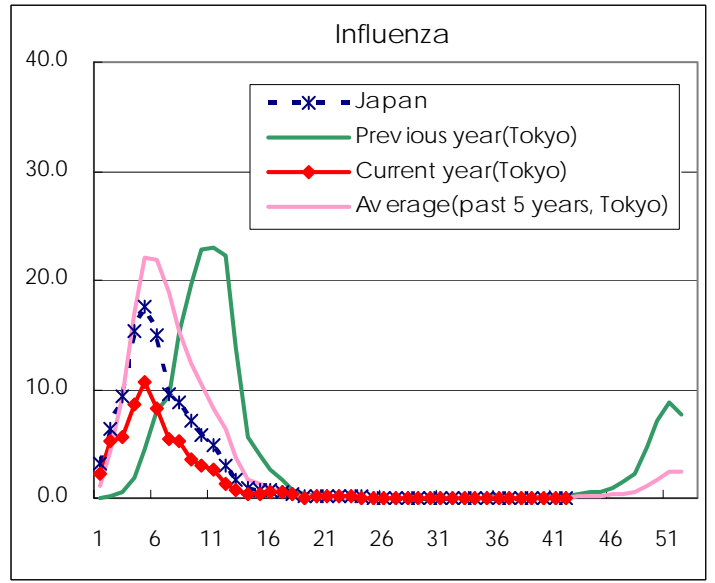
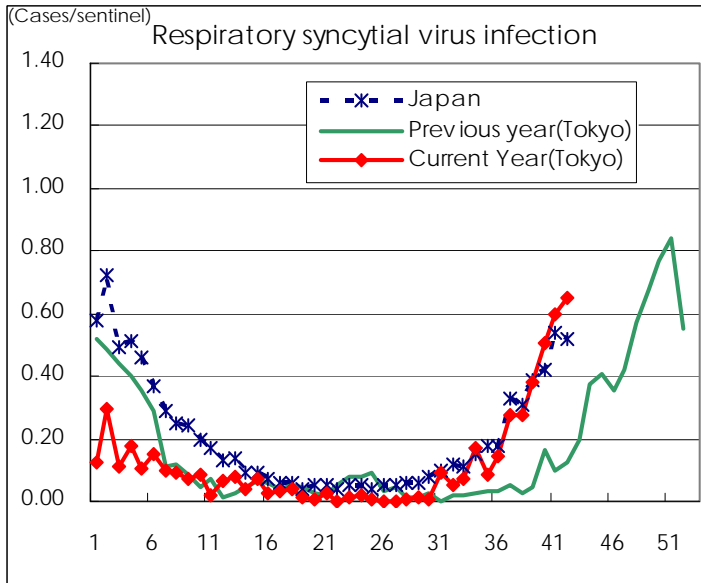
Category	Diseases	Tokyo					Japan	
		39th	40th	41st	42nd	Cum 2008	42nd	Cum 2008
V	Amebiasis	5	5	3	1	153	9	679
	Viral hepatitis(excluding hepatitis A and E)		1			25	1	184
	Acute encephalitis(excluding JE and WNE)		1			8	5	155
	Cryptosporidiosis			1		4		8
	Creutzfeldt-Jakob disease					12	3	125
	Severe invasive streptococcal infections(TSLS)		1			19		98
	Acquired immunodeficiency syndrome (AIDS)	6	14	4	10	429	21	1,228
	Giardiasis					19		67
	Meningococcal meningitis					2		10
	Congenital rubella syndrome							1
	Syphilis	4	4	2	5	160	10	656
	Tetanus		1			5	2	102
	Vancomycin-resistant S. aureus infection							
	Vancomycin-resistant Enterococcus infection					10		66
	Rubella	1			1	40	2	279
	Measles	2	3	1		1,154	14	10,861

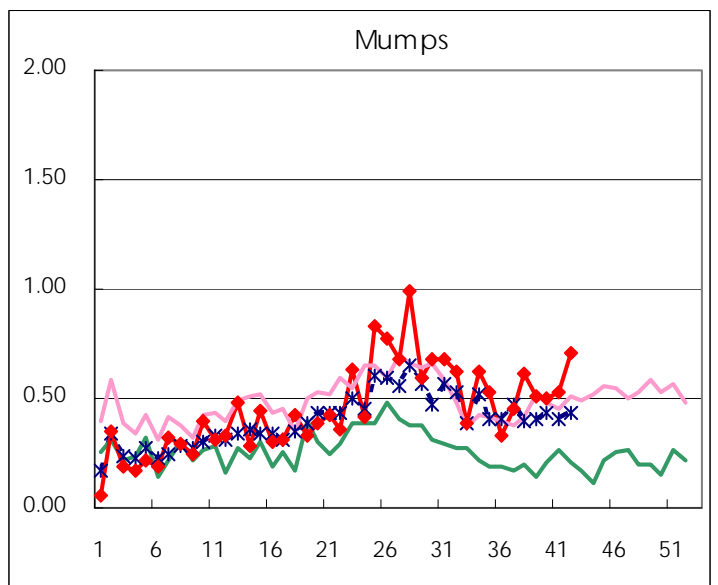
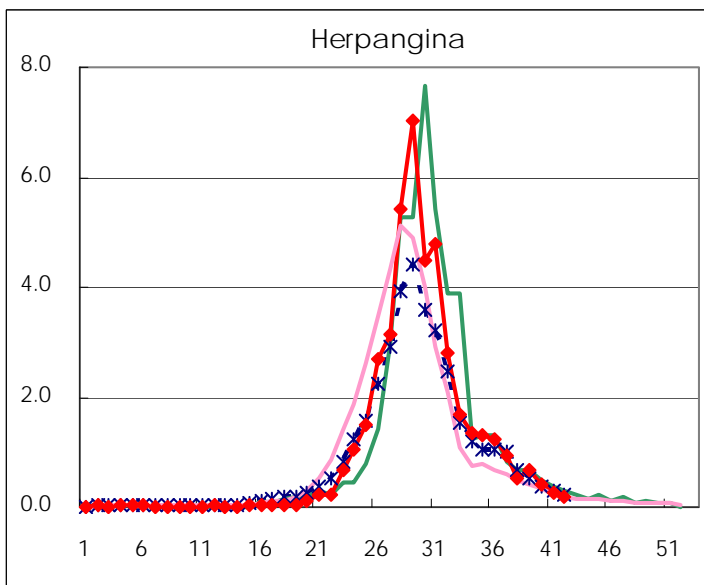
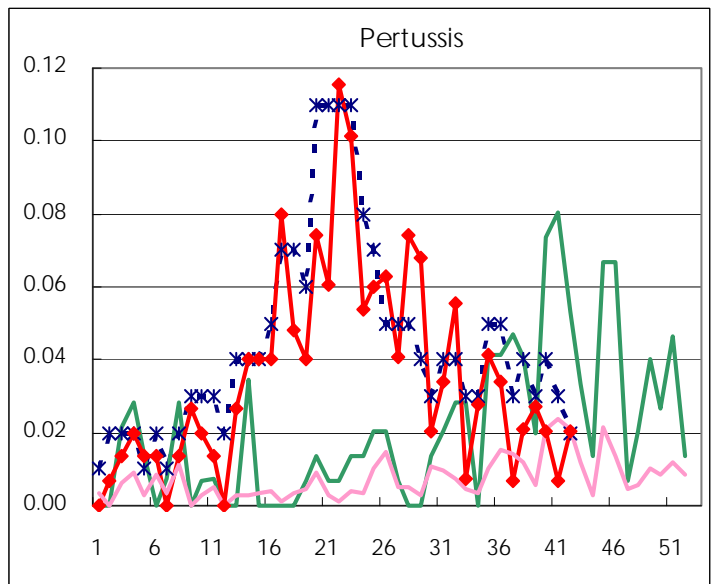
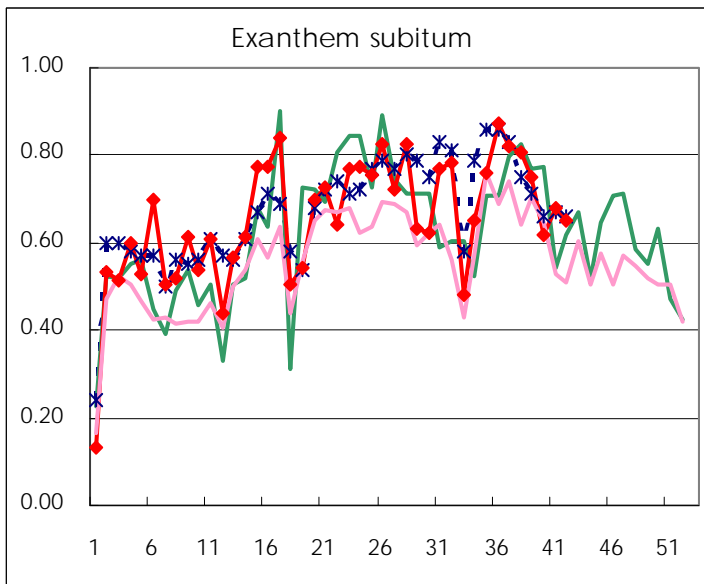
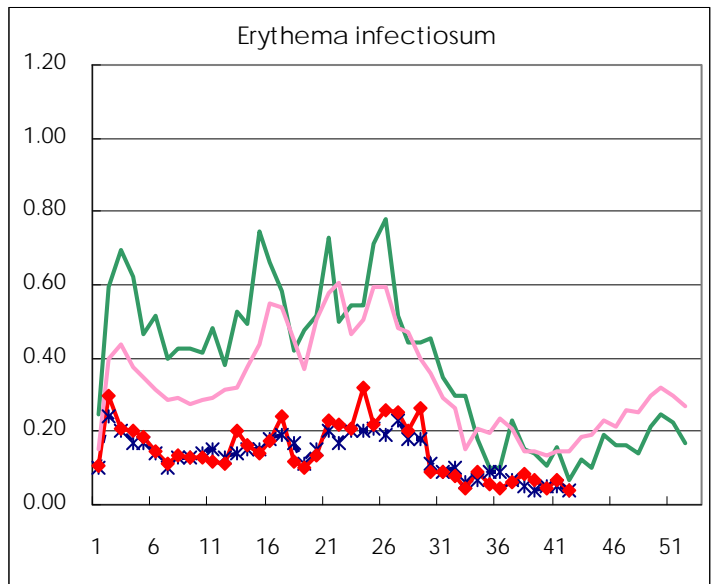
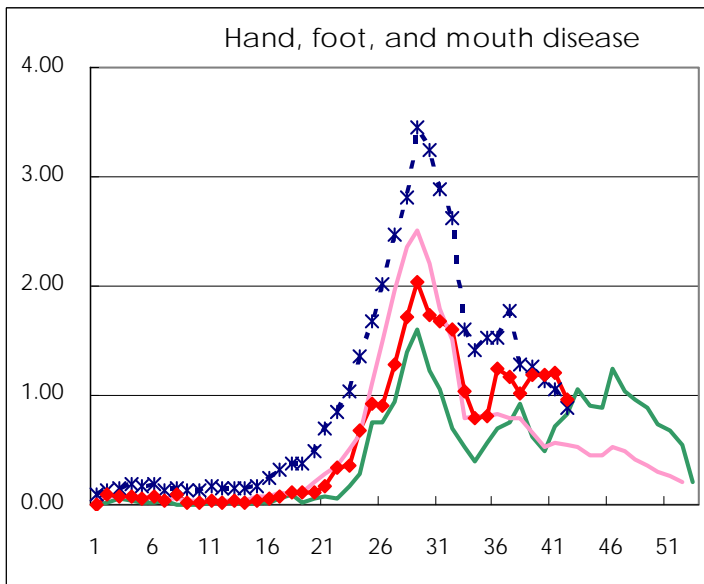
Number of patients with the diseases to be reported
by the designated clinics and hospitals

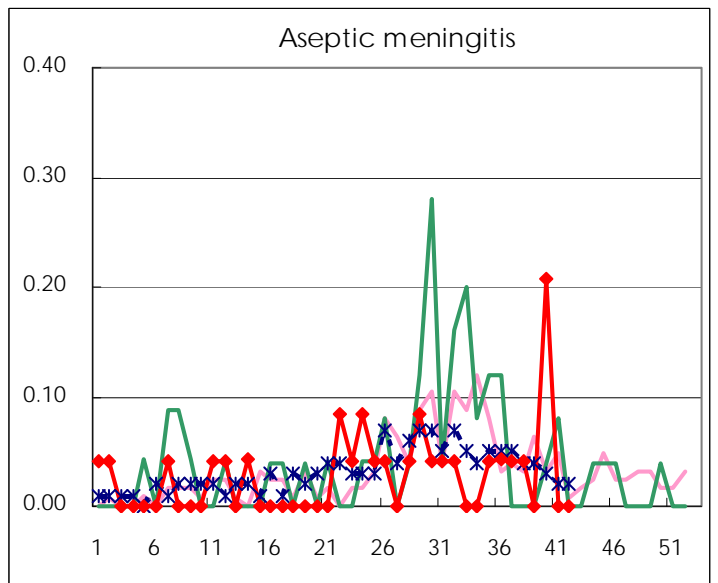
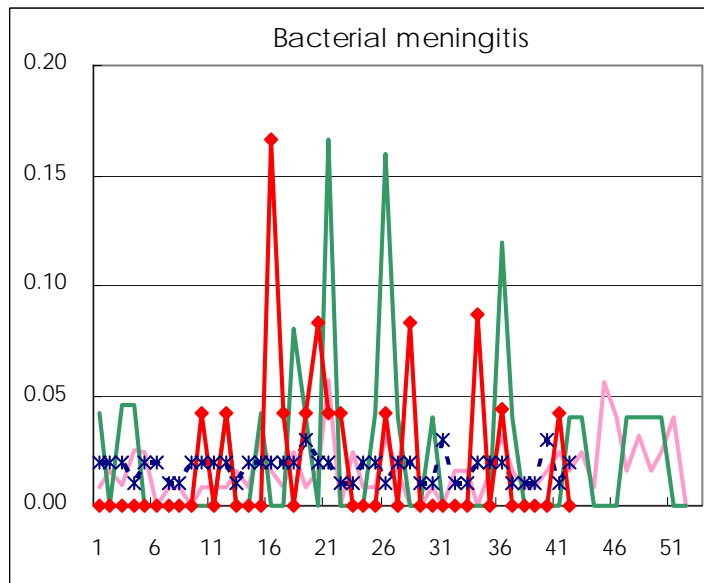
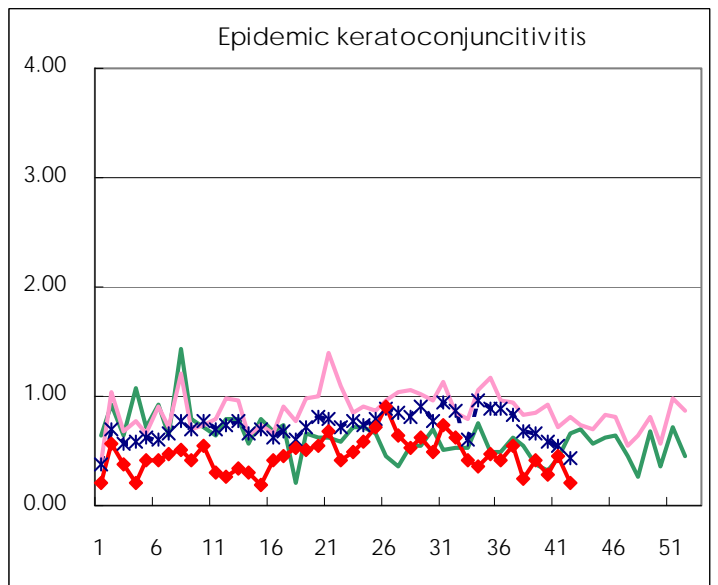
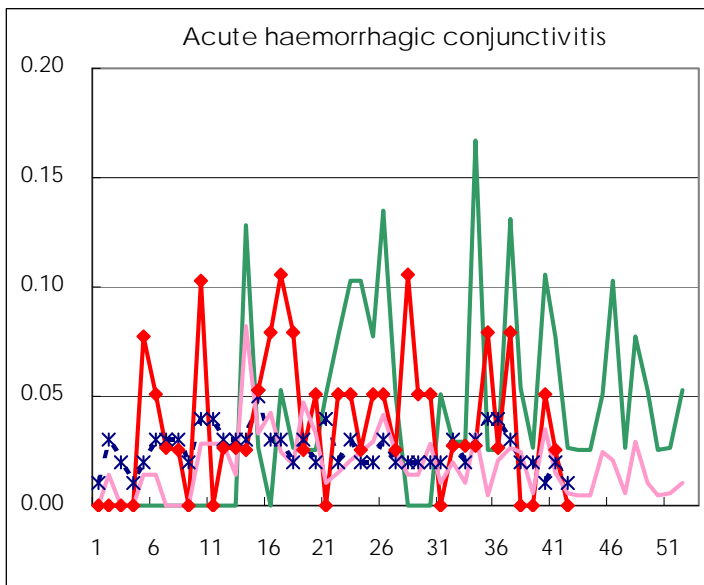
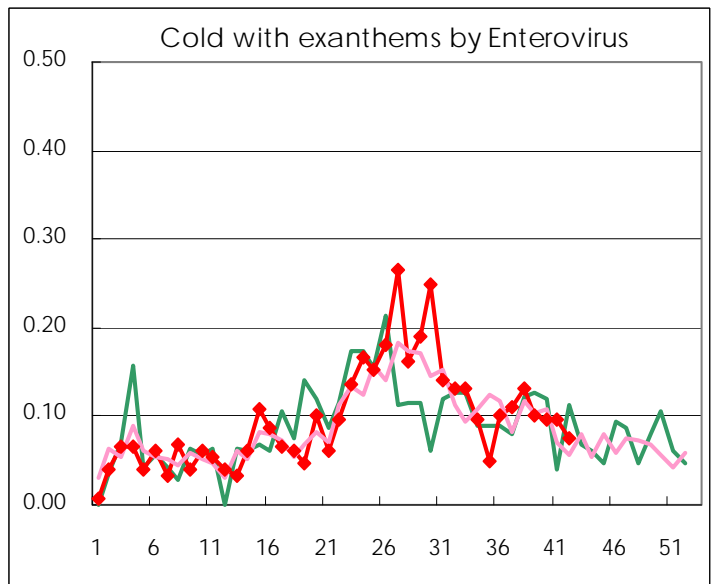
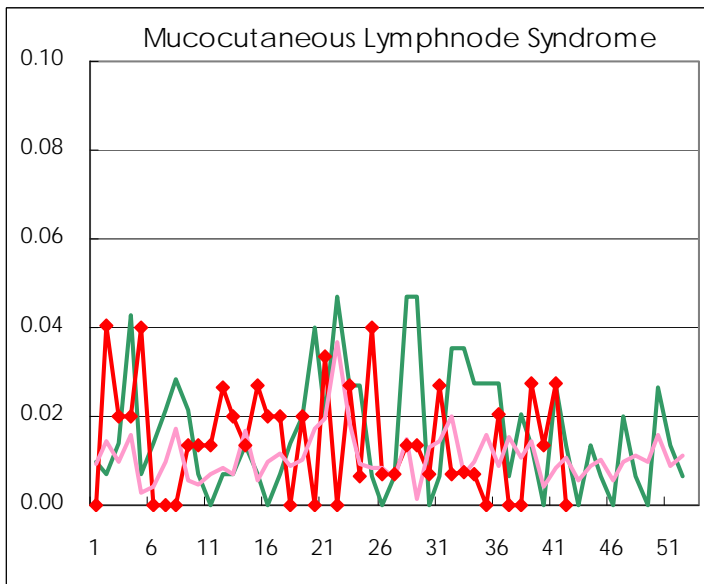
Diseases	2008				
	39th	40th	41st	42nd	/sentinel
Respiratory syncytial virus infection	56	74	88	96	0.65
Pharyngoconjunctival fever	33	19	24	18	0.12
Group A streptococcal pharyngitis	177	160	208	155	1.05
Infectious gastroenteritis	471	501	528	515	3.50
Chickenpox	74	58	74	88	0.60
Hand, foot, and mouth disease	175	176	178	141	0.96
Erythema infectiosum	10	7	10	6	0.04
Exanthem subitum	110	91	100	96	0.65
Pertussis	4	3	1	3	0.02
Herpangina	101	60	37	29	0.20
Mumps	75	74	78	104	0.71
Cold with exanthems by Enterovirus	15	14	14	11	0.07
Mucocutaneous Lymphnode Syndrome	4	2	4		
Influenza	10	5	19	14	0.05
Acute hemorrhagic conjunctivitis		2	1		
Epidemic keratoconjunctivitis	16	11	18	8	0.21
Bacterial meningitis			1		
Aseptic meningitis		5			
Mycoplasma pneumonia	9	4	2	6	0.25
Chlamydial pneumonia (excluding psittacosis)	1			2	0.08

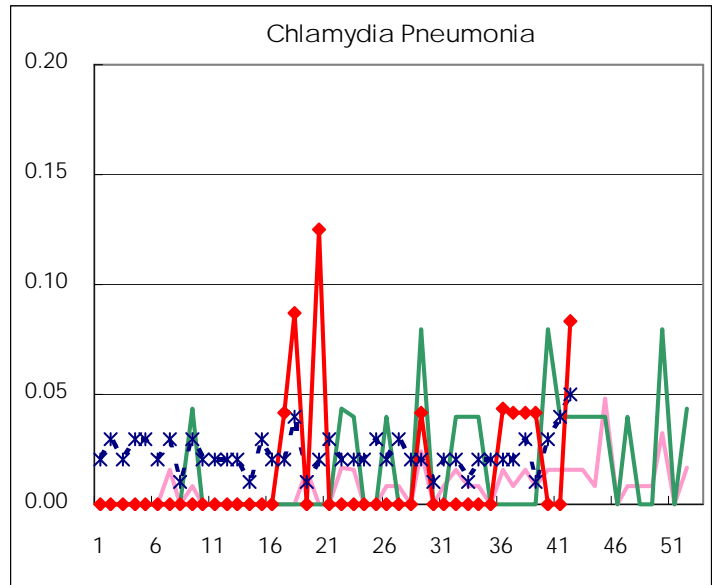
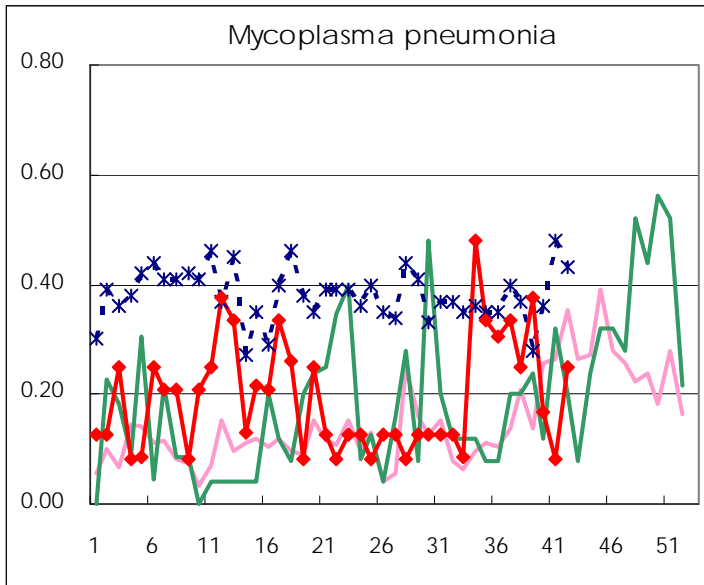
(Blank means 0.)

Disease Trend Graph (weekly reported cases per sentinel in comparison)









Number of sentinel facilities for weekly reporting		
Types of sentinels	Number of sentinels	Sentinels having reported
Pediatric	150	147
Influenza	290	285
Ophthalmic	39	39
Specially-designated	24	24

Tokyo Metropolitan Government
Infectious Disease Surveillance Center