
INFECTIOUS DISEASES WEEKLY REPORT

TOKYO IDWR

Tokyo Metropolitan Infectious Disease Surveillance Center

6 November 2008 / Number 44

Surveillance System in Tokyo, Japan

The infectious diseases which all physicians must report

All physicians must report to health centers the incidence of the diseases which are shown at page one. Health centers electronically report the individual cases to Tokyo Metropolitan Infectious Disease Surveillance Center.

The infectious diseases required to be reported by the sentinels

The numbers of patients who visit the sentinel clinics or hospitals during a week are reported to health centers in Tokyo. And they electronically report the numbers to Tokyo Metropolitan Infectious Disease Surveillance Center. We have about 400 sentinel clinics and hospitals in Tokyo.

1st Week is early January and 52nd Week is end of December.

Tokyo Metropolitan Institute of Public Health
Epidemiological Information Office

TEL:81-3-3363-3213 FAX:81-3-5332-7365

e-mail:idsc@tokyo-eiken.go.jp

URL:idsc.tokyo-eiken.go.jp/

Number of patients with the diseases which all physicians must report

Category	Diseases	Tokyo				Japan		
		41st	42nd	43rd	44th	Cum 2008	44th	Cum 2008
I	Ebola hemorrhagic fever							
	Crimean-Congo hemorrhagic fever							
	Smallpox							
	South American hemorrhagic fever							
	Plague							
	Marburg disease							
	Lassa fever							
II	Acute poliomyelitis							1
	Tuberculosis	73	39	82	60	3624	298	22745
	Diphtheria							
	Severe Acute Respiratory Syndrome(SARS)							
	Avian influenza H5N1							
III	Cholera	1				6		45
	Shigellosis	2	1	1	1	56	5	269
	Enterohemorrhagic Escherichia coli infection	7	35	9	5	376	62	3,950
	Typhoid fever	1	1		1	12		49
	Paratyphoid fever					5		24
IV	Hepatitis E			1		7		38
	West Nile fever							
	Hepatitis A					26	1	153
	Echinococcosis							14
	Yellow fever							
	Psittacosis							7
	Omsk hemorrhagic fever							
	Relapsing fever							
	Kyasanur forest disease							
	Q fever					1		3
	Rabies							
	Coccidioidomycosis							2
	Monkeypox							
	Hemorrhagic fever with renal syndrome							
	Western equine encephalitis							
	Tick-borne encephalitis							
	Anthrax							
	Scrub typhus(Tsutsugamushi disease)					5	17	158
	Dengue fever				2	27	2	90
	Eastern equine encephalitis							
	Avian influenza (excluding H5N1)							
	Nipah virus infection							
	Japanese spotted fever						11	101
	Japanese encephalitis							3
	Epidemic typhus							
	Hantavirus pulmonary syndrome							
	Herpes B virus infection							
	Glanders							
	Brucellosis							4
	Venezuelan equine encephalitis							
	Hendra virus infection							
	Botulism							2
Malaria	1	1			21	2	48	
Tularemia							4	
Lyme disease							4	
Lyssavirus infection(excluding rabies)								
Rift valley fever								
Melioidosis								
Legionellosis	2	1	2		68	10	752	
Leptospirosis					3		32	
Rocky mountain spotted fever								

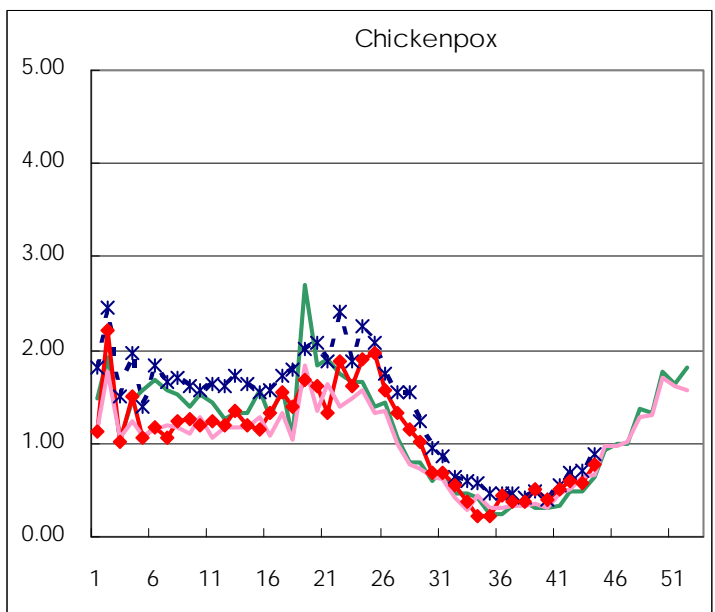
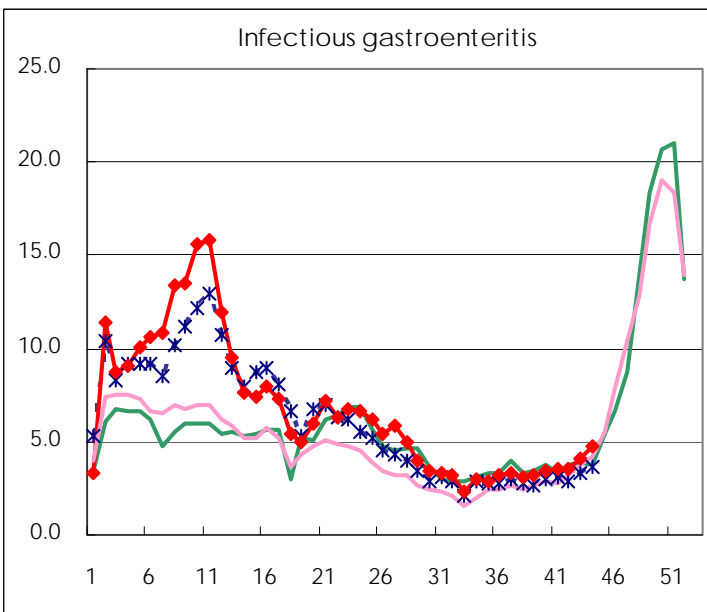
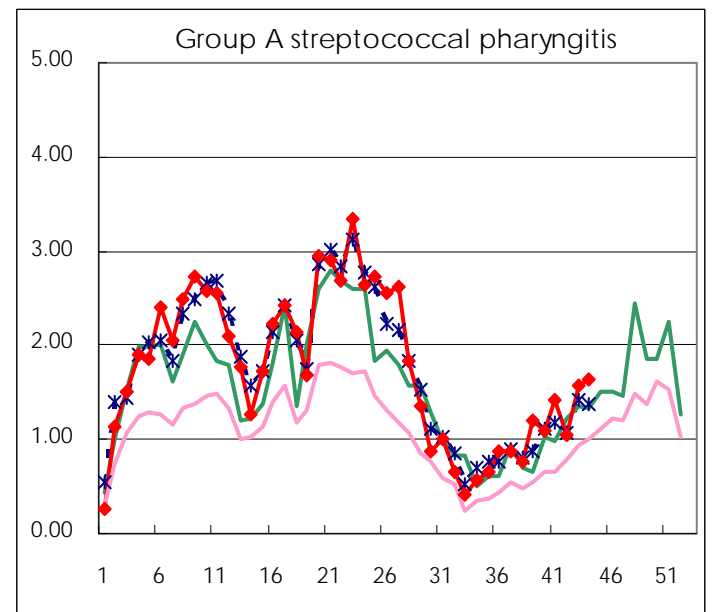
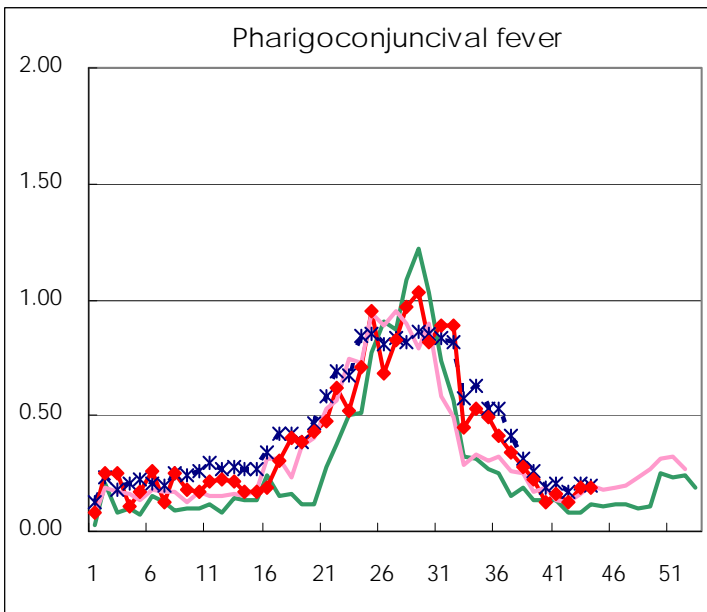
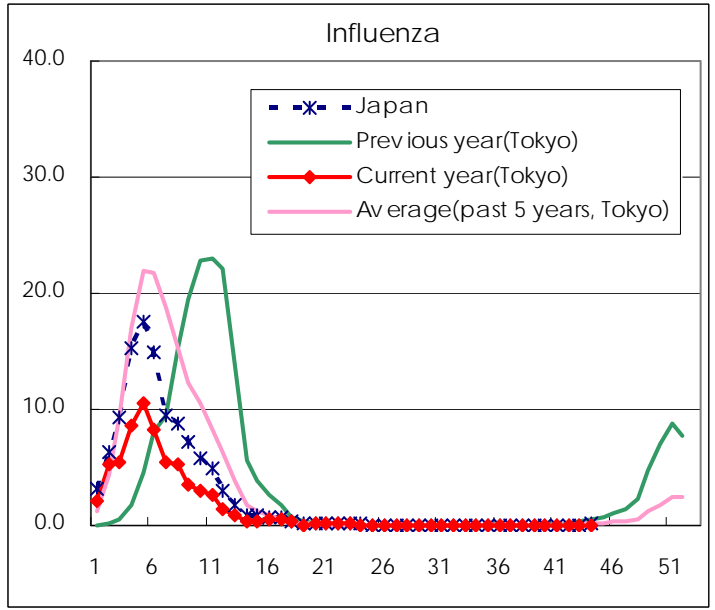
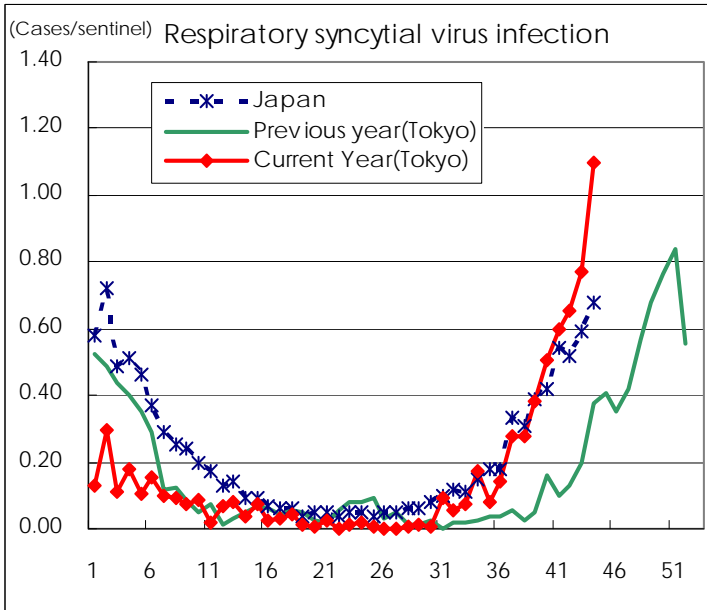
Category	Diseases	Tokyo					Japan	
		41st	42nd	43rd	44th	Cum 2008	44th	Cum 2008
V	Amebiasis	3	1	7	3	163	11	705
	Viral hepatitis(excluding hepatitis A and E)				2	27		200
	Acute encephalitis(excluding JE and WNE)			1		9		156
	Cryptosporidiosis	1				4		8
	Creutzfeldt-Jakob disease					12	1	130
	Severe invasive streptococcal infections(TSLS)					19		99
	Acquired immunodeficiency syndrome (AIDS)	4	10	16	16	461	21	1,294
	Giardiasis					19		67
	Meningococcal meningitis					2		10
	Congenital rubella syndrome							1
	Syphilis	2	5	3	3	166	7	683
	Tetanus					5		105
	Vancomycin-resistant S. aureus infection							
	Vancomycin-resistant Enterococcus infection				2	12	2	74
	Rubella		1	1		41	2	283
	Measles	1		4	2	1,160	12	10,887

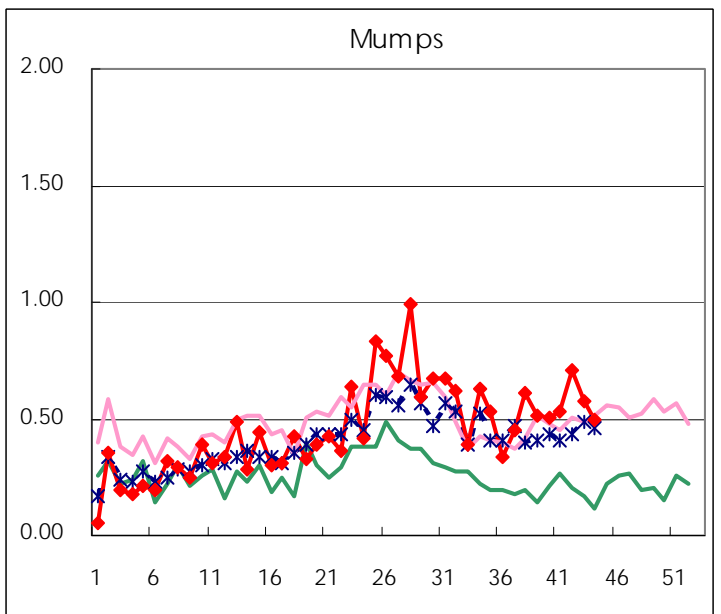
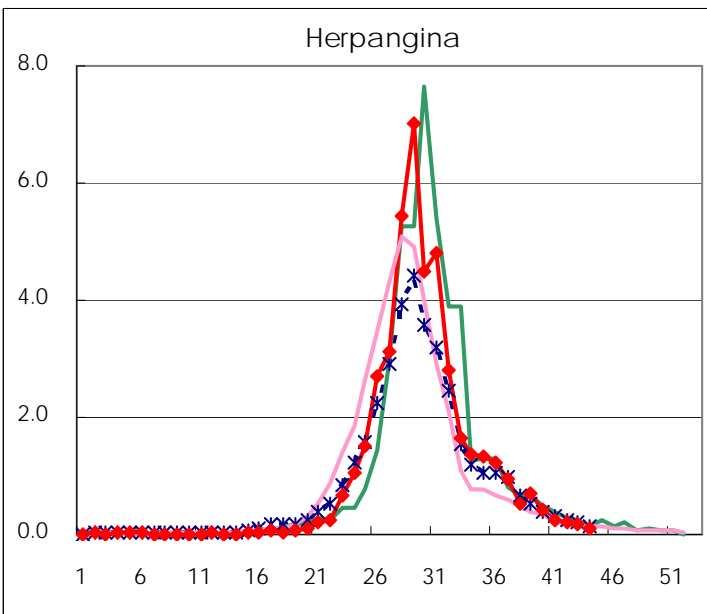
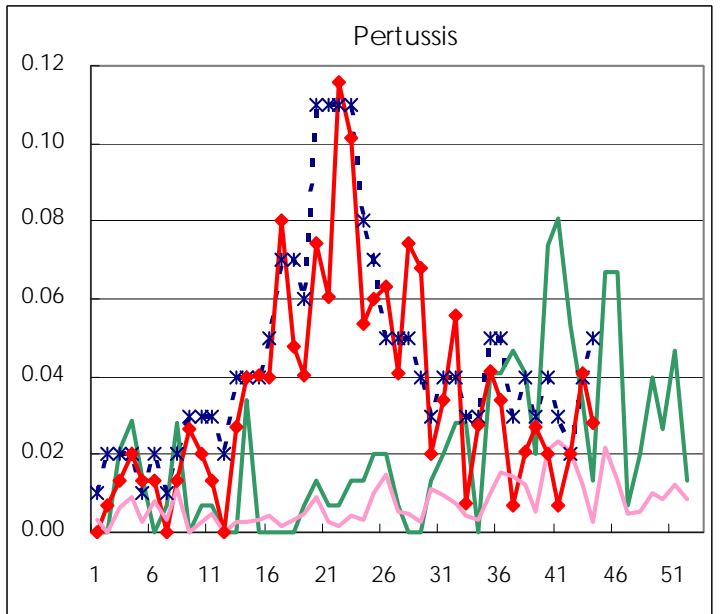
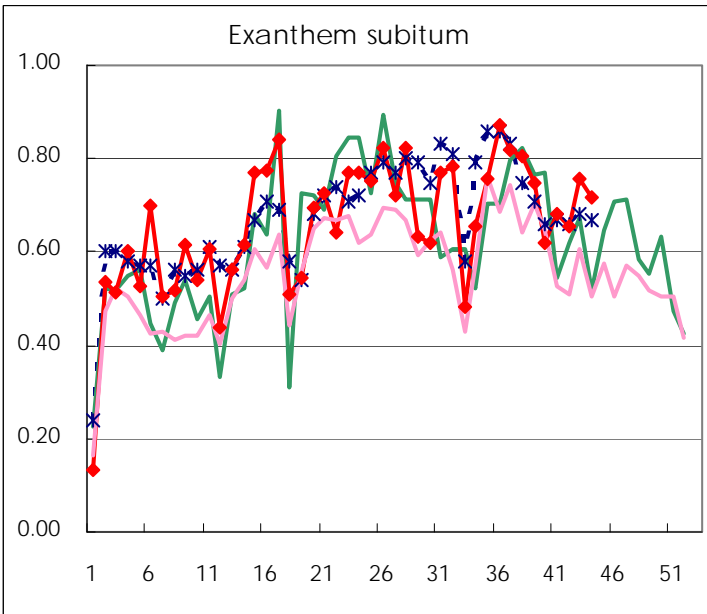
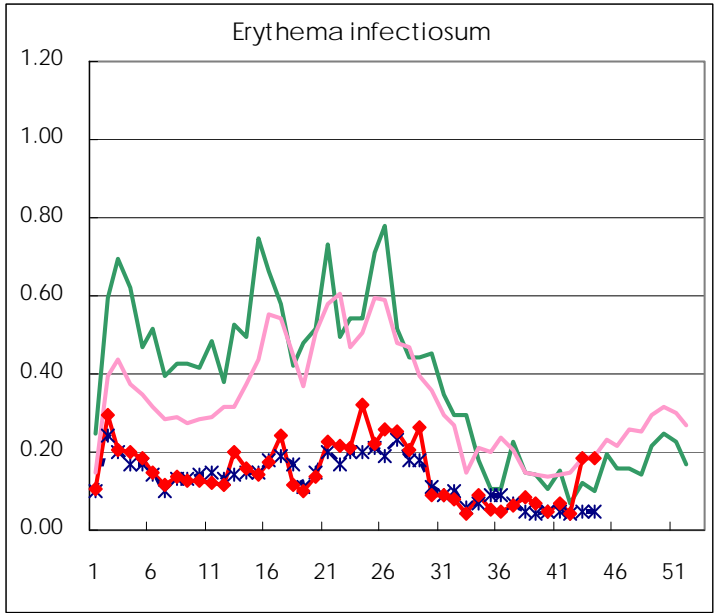
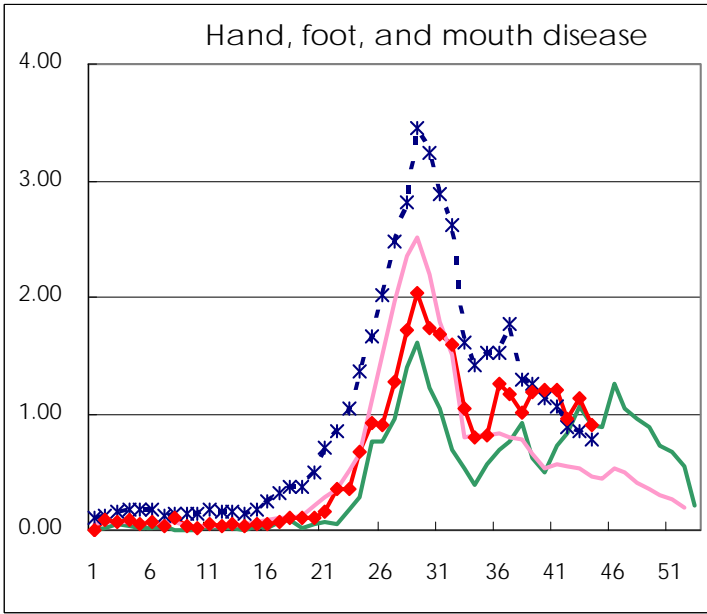
Number of patients with the diseases to be reported
by the designated clinics and hospitals

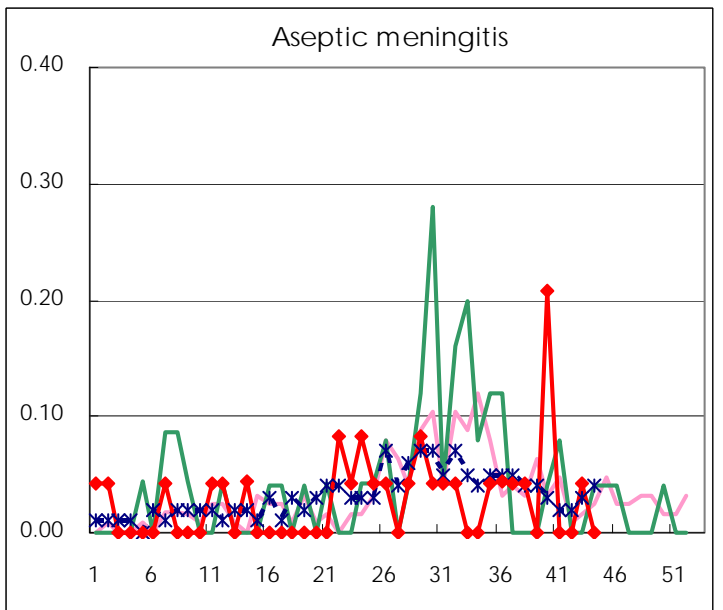
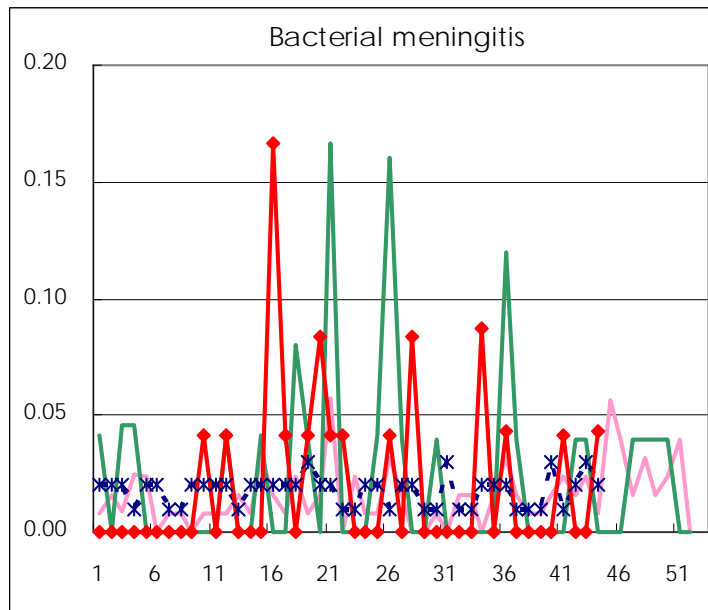
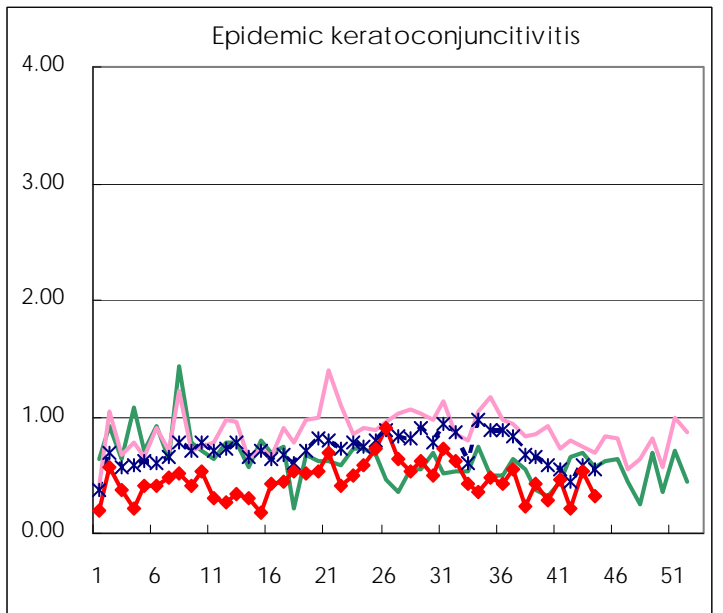
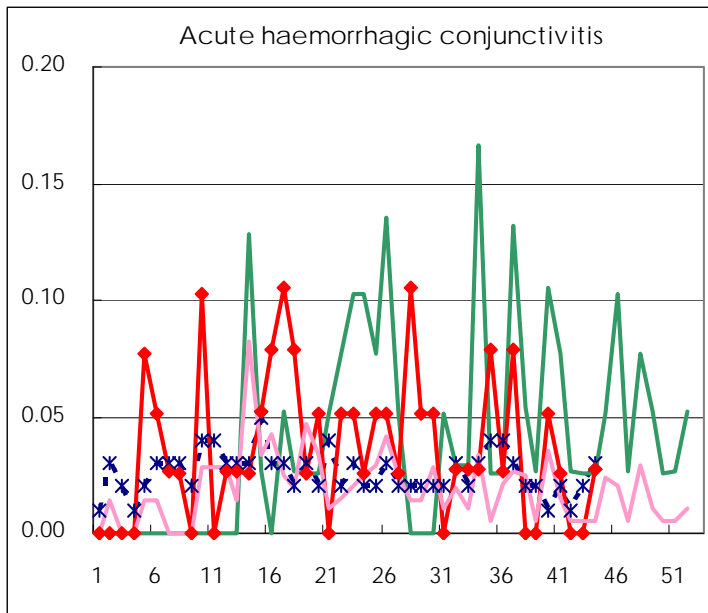
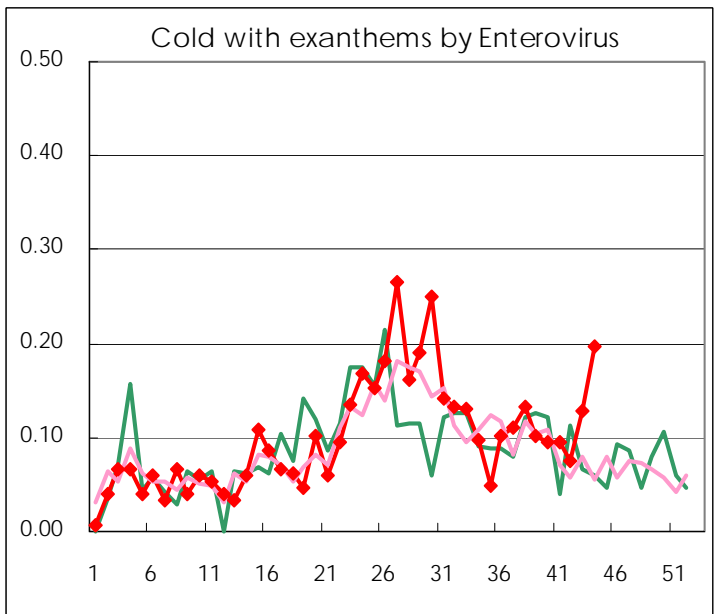
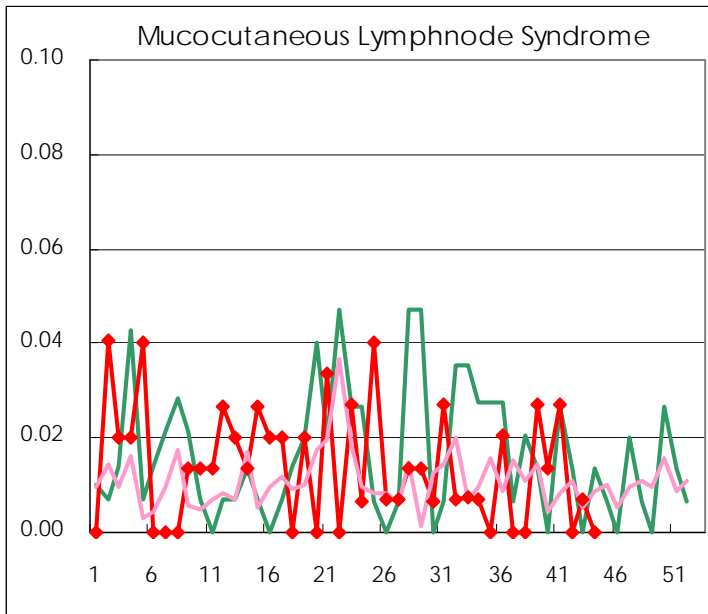
Diseases	2008				
	41st	42nd	43rd	44th	/sentinel
Respiratory syncytial virus infection	88	96	113	156	1.10
Pharyngoconjunctival fever	24	18	28	27	0.19
Group A streptococcal pharyngitis	208	155	232	234	1.65
Infectious gastroenteritis	528	515	605	675	4.75
Chickenpox	74	88	84	111	0.78
Hand, foot, and mouth disease	178	141	166	129	0.91
Erythema infectiosum	10	6	27	26	0.18
Exanthem subitum	100	96	111	102	0.72
Pertussis	1	3	6	4	0.03
Herpangina	37	29	27	14	0.10
Mumps	78	104	84	70	0.49
Cold with exanthems by Enterovirus	14	11	19	28	0.20
Mucocutaneous Lymphnode Syndrome	4		1		
Influenza	19	14	9	11	0.04
Acute hemorrhagic conjunctivitis	1			1	0.03
Epidemic keratoconjunctivitis	18	8	20	12	0.32
Bacterial meningitis	1			1	0.04
Aseptic meningitis			1		
Mycoplasma pneumonia	2	6	13	8	0.35
Chlamydial pneumonia (excluding psittacosis)		2	3	2	0.09

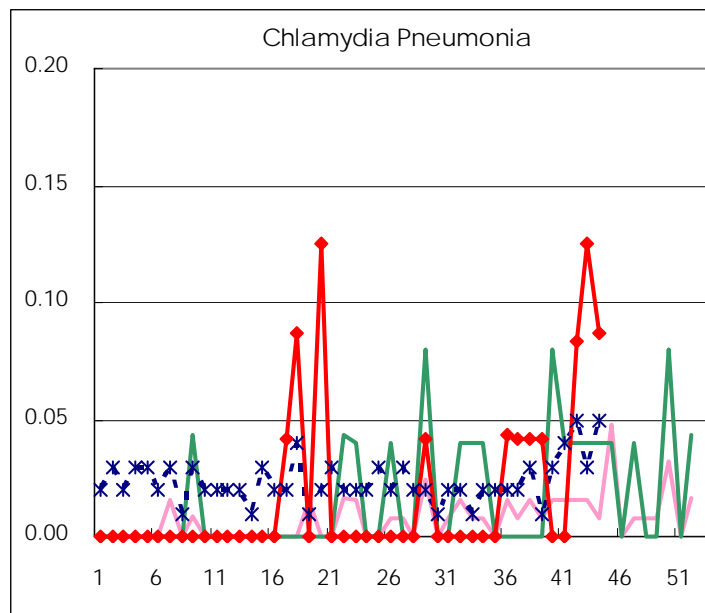
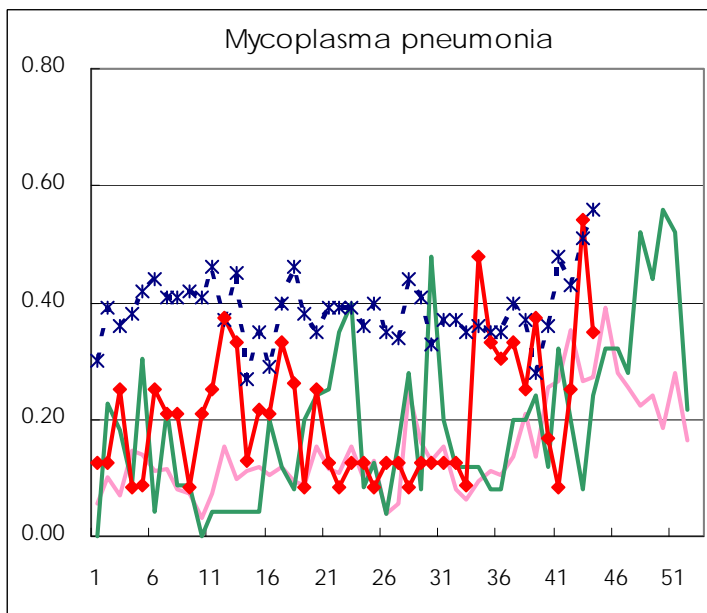
(Blank means 0.)

Disease Trend Graph (weekly reported cases per sentinel in comparison)









Number of sentinel facilities for weekly reporting		
Types of sentinels	Number of sentinels	Sentinels having reported
Pediatric	150	142
Influenza	290	278
Ophthalmic	39	37
Specially- designated	24	23

Tokyo Metropolitan Government
Infectious Disease Surveillance Center