
INFECTIOUS DISEASES WEEKLY REPORT

TOKYO IDWR

Tokyo Metropolitan Infectious Disease Surveillance Center

13 November 2008 / Number 45

Surveillance System in Tokyo, Japan

The infectious diseases which all physicians must report

All physicians must report to health centers the incidence of the diseases which are shown at page one. Health centers electronically report the individual cases to Tokyo Metropolitan Infectious Disease Surveillance Center.

The infectious diseases required to be reported by the sentinels

The numbers of patients who visit the sentinel clinics or hospitals during a week are reported to health centers in Tokyo. And they electronically report the numbers to Tokyo Metropolitan Infectious Disease Surveillance Center. We have about 400 sentinel clinics and hospitals in Tokyo.

1st Week is early January and 52nd Week is end of December.

Tokyo Metropolitan Institute of Public Health
Epidemiological Information Office

TEL:81-3-3363-3213 FAX:81-3-5332-7365

e-mail:idsc@tokyo-eiken.go.jp

URL:idsc.tokyo-eiken.go.jp/

Number of patients with the diseases which all physicians must report

Category	Diseases	Tokyo				Cum 2008	Japan	
		42nd	43rd	44th	45th		45th	Cum 2008
I	Ebola hemorrhagic fever							
	Crimean-Congo hemorrhagic fever							
	Smallpox							
	South American hemorrhagic fever							
	Plague							
	Marburg disease							
	Lassa fever							
II	Acute poliomyelitis							1
	Tuberculosis	41	87	67	45	3694	253	23427
	Diphtheria							
	Severe Acute Respiratory Syndrome(SARS)							
	Avian influenza H5N1							
III	Cholera					6		45
	Shigellosis	1	1	1	1	57	3	272
	Enterohemorrhagic Escherichia coli infection	35	9	5	6	382	56	4,016
	Typhoid fever	1		1		12	1	51
	Paratyphoid fever					5	1	25
IV	Hepatitis E		1			7		38
	West Nile fever							
	Hepatitis A				1	27	1	154
	Echinococcosis							14
	Yellow fever							
	Psittacosis							7
	Omsk hemorrhagic fever							
	Relapsing fever							
	Kyasanur forest disease							
	Q fever					1		3
	Rabies							
	Coccidioidomycosis							2
	Monkeypox							
	Hemorrhagic fever with renal syndrome							
	Western equine encephalitis							
	Tick-borne encephalitis							
	Anthrax							
	Scrub typhus(Tsutsugamushi disease)					5	14	173
	Dengue fever			3		28	3	93
	Eastern equine encephalitis							
	Avian influenza (excluding H5N1)							
	Nipah virus infection							
	Japanese spotted fever						2	103
	Japanese encephalitis							3
	Epidemic typhus							
	Hantavirus pulmonary syndrome							
	Herpes B virus infection							
	Glanders							
	Brucellosis							4
	Venezuelan equine encephalitis							
	Hendra virus infection							
	Botulism							2
Malaria	1				21	1	49	
Tularemia							4	
Lyme disease							4	
Lyssavirus infection(excluding rabies)								
Rift valley fever								
Melioidosis								
Legionellosis	1	3		2	71	16	772	
Leptospirosis				1	4		33	
Rocky mountain spotted fever								

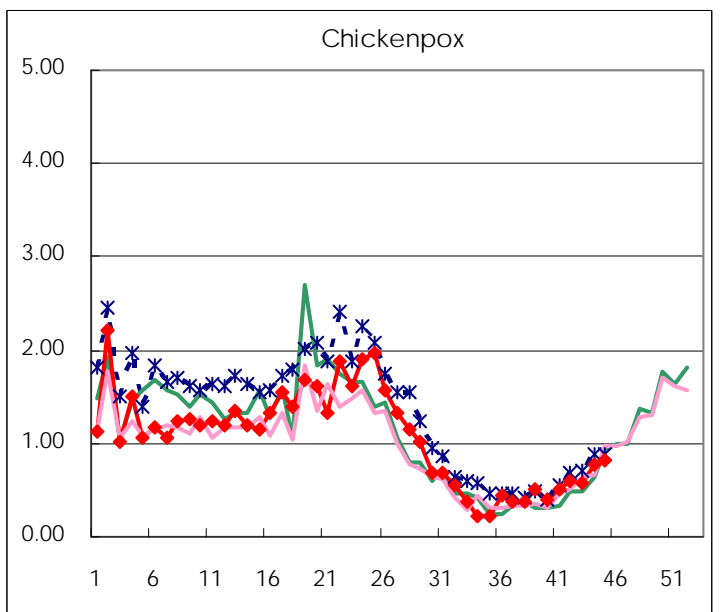
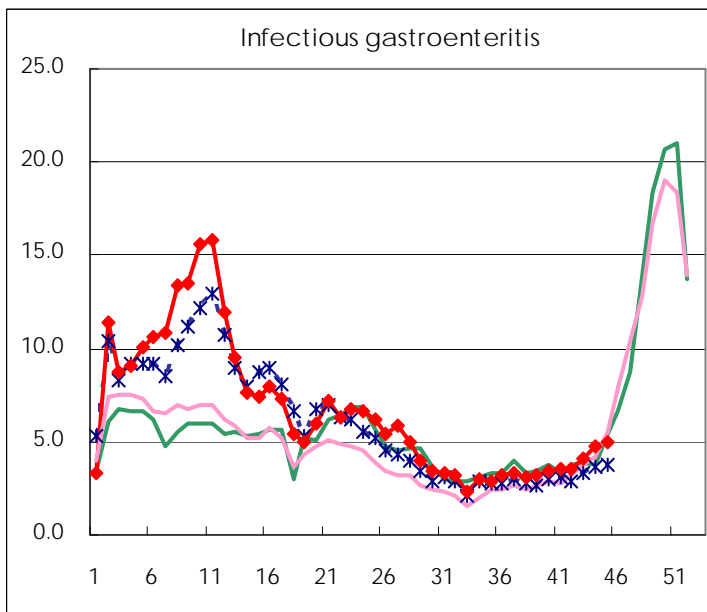
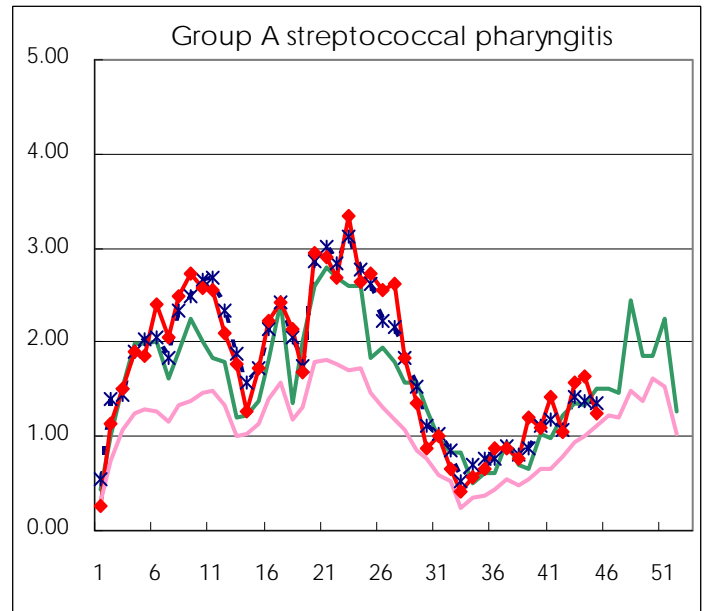
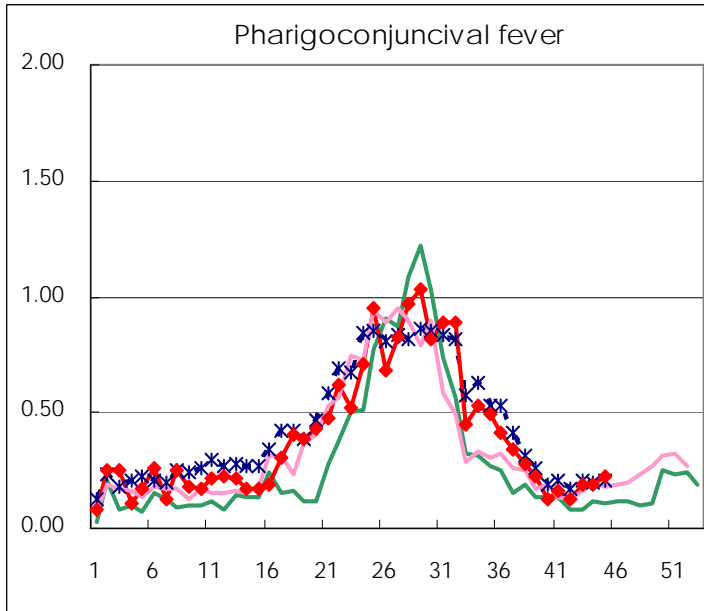
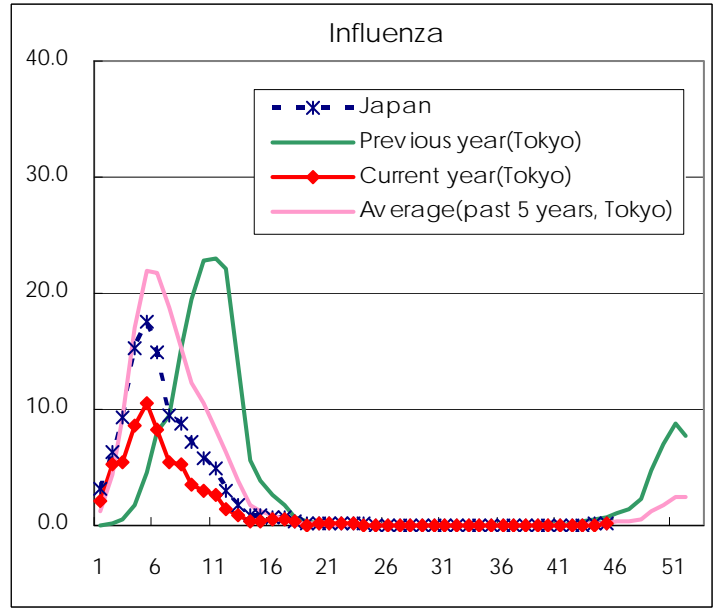
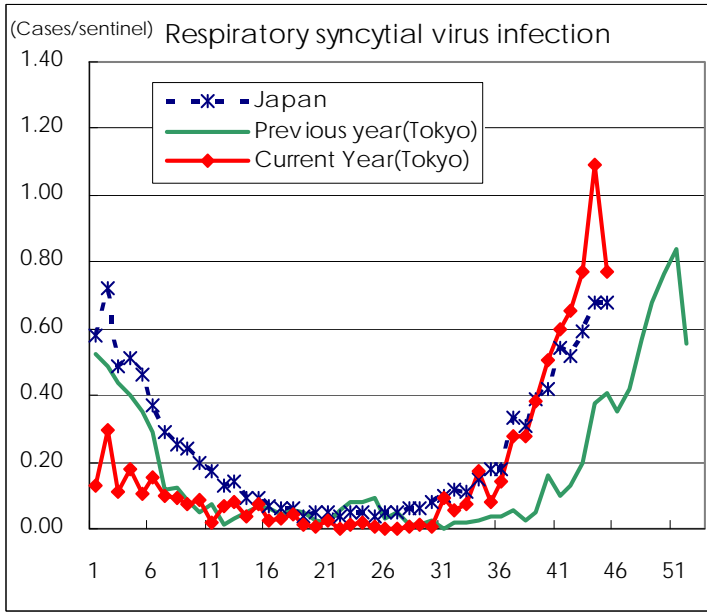
Category	Diseases	Tokyo					Japan	
		42nd	43rd	44th	45th	Cum 2008	45th	Cum 2008
V	Amebiasis	1	7	3	2	165	6	722
	Viral hepatitis(excluding hepatitis A and E)			3		28	4	206
	Acute encephalitis(excluding JE and WNE)		1			9	1	161
	Cryptosporidiosis					4		8
	Creutzfeldt-Jakob disease				1	13	2	132
	Severe invasive streptococcal infections(TSLS)					19	1	102
	Acquired immunodeficiency syndrome (AIDS)	10	16	16	14	475	11	1,328
	Giardiasis					19		67
	Meningococcal meningitis					2		10
	Congenital rubella syndrome							1
	Syphilis	5	3	3	2	168	12	705
	Tetanus					5		108
	Vancomycin-resistant S. aureus infection							
	Vancomycin-resistant Enterococcus infection			2	1	13		75
	Rubella	1	1			41	1	285
	Measles		4	2	3	1,163	13	10,904

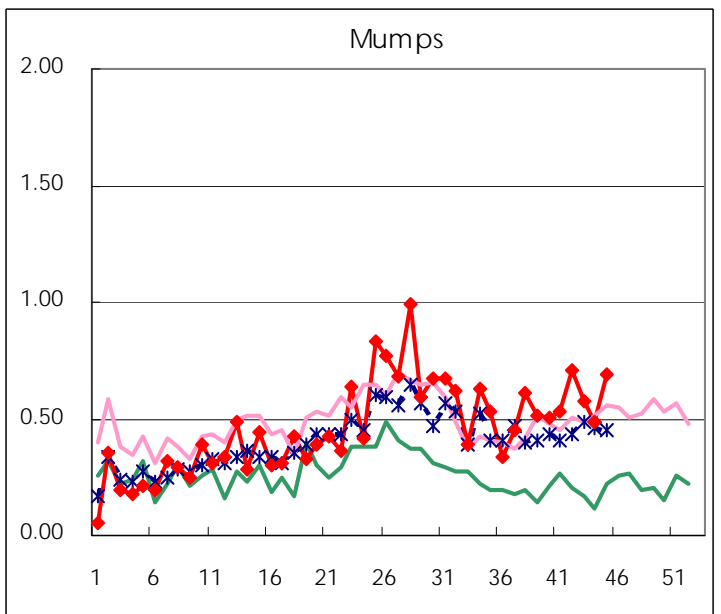
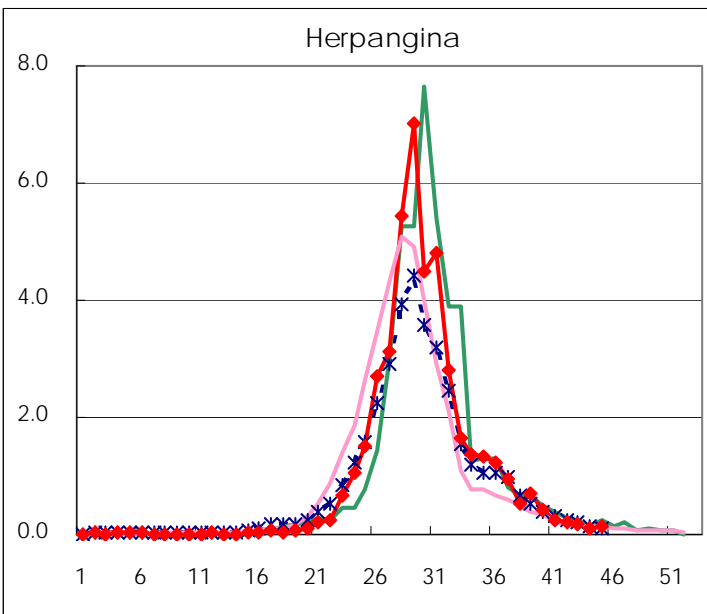
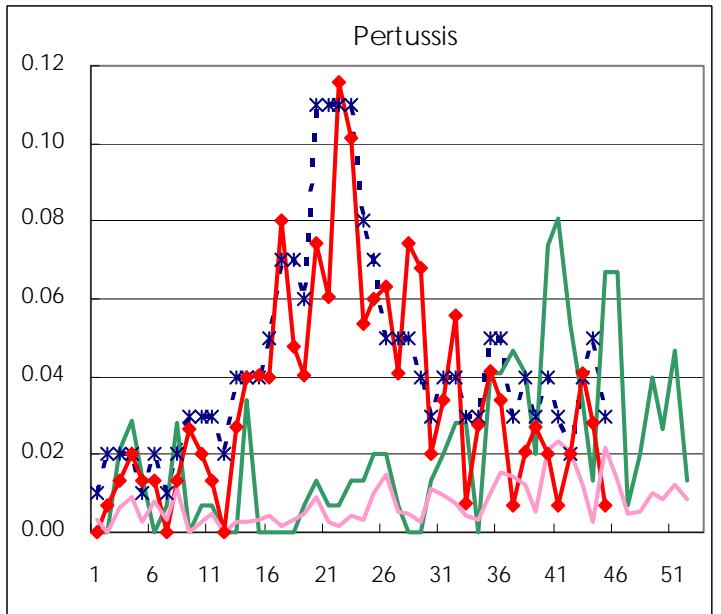
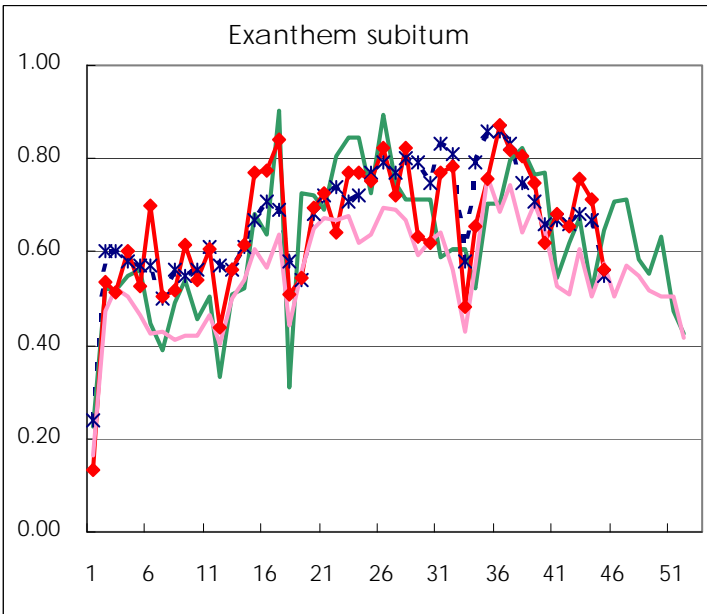
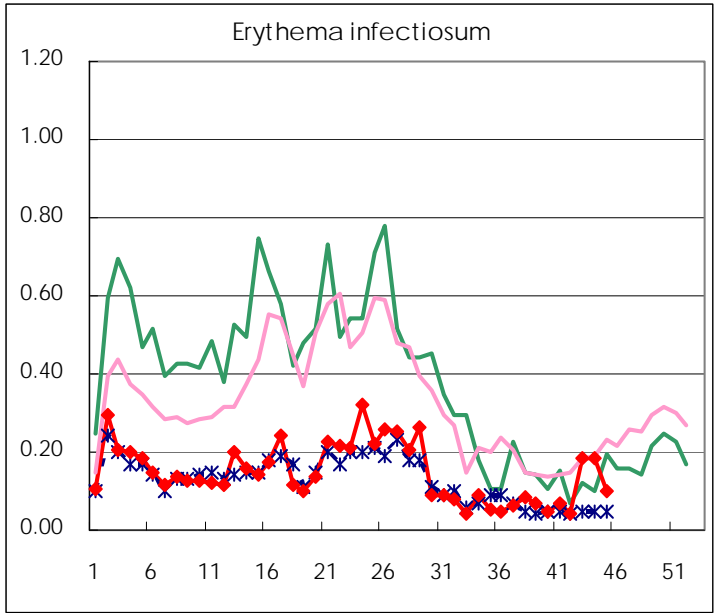
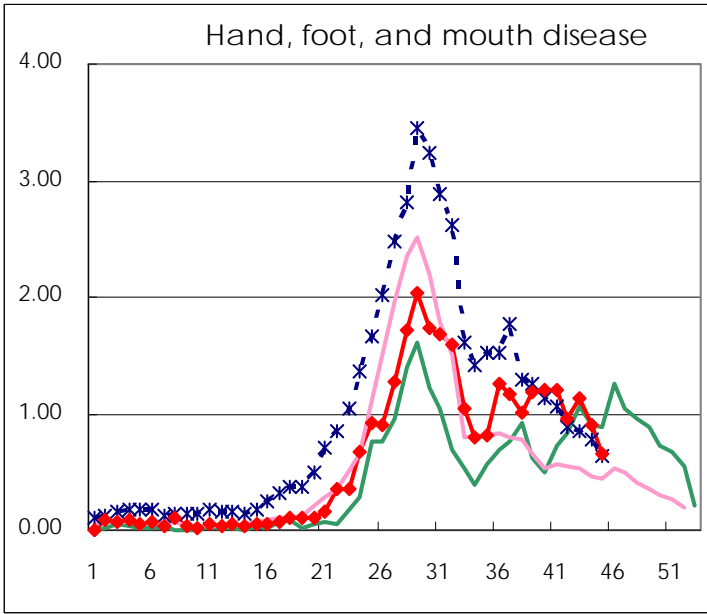
Number of patients with the diseases to be reported
by the designated clinics and hospitals

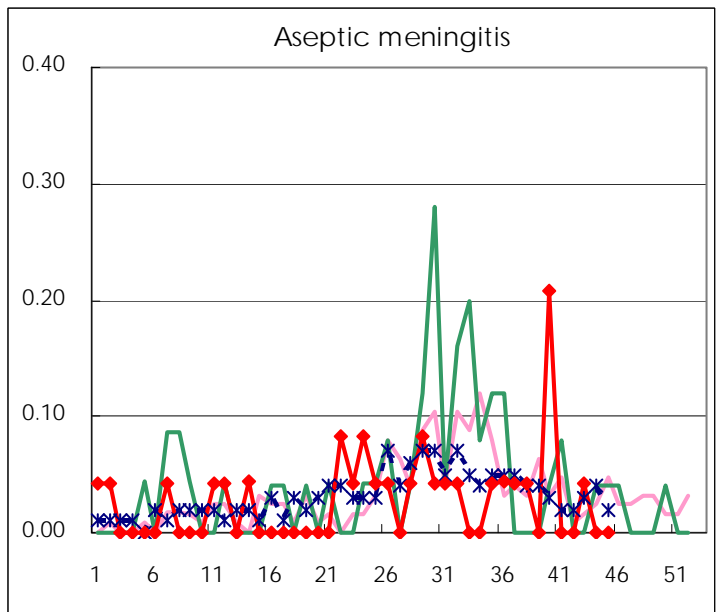
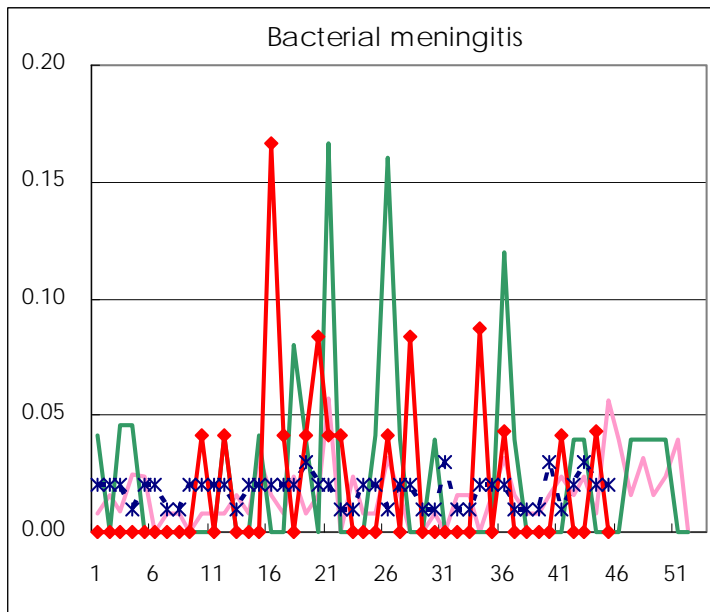
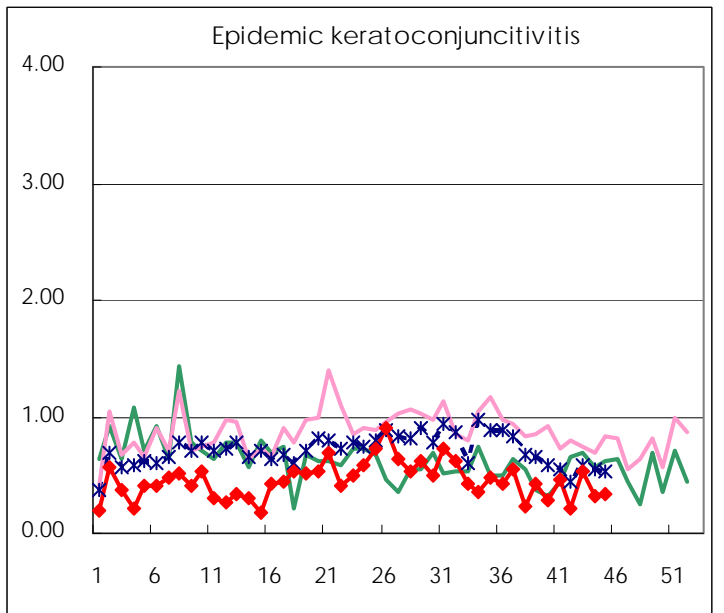
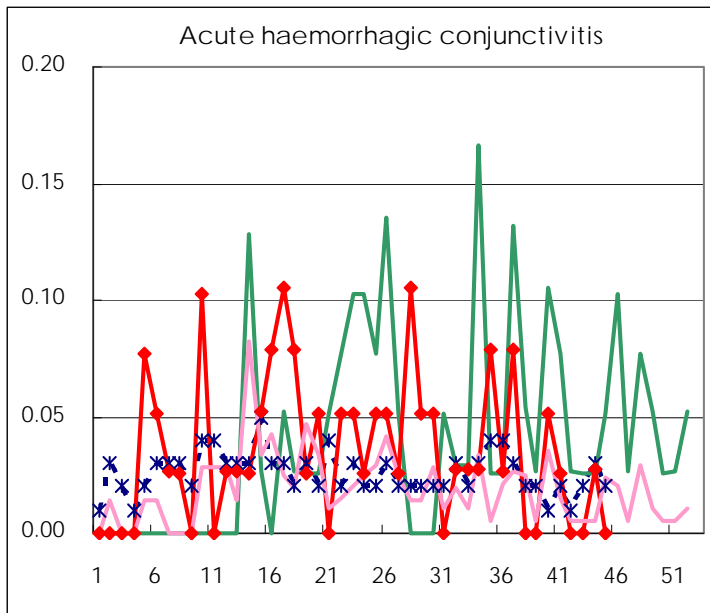
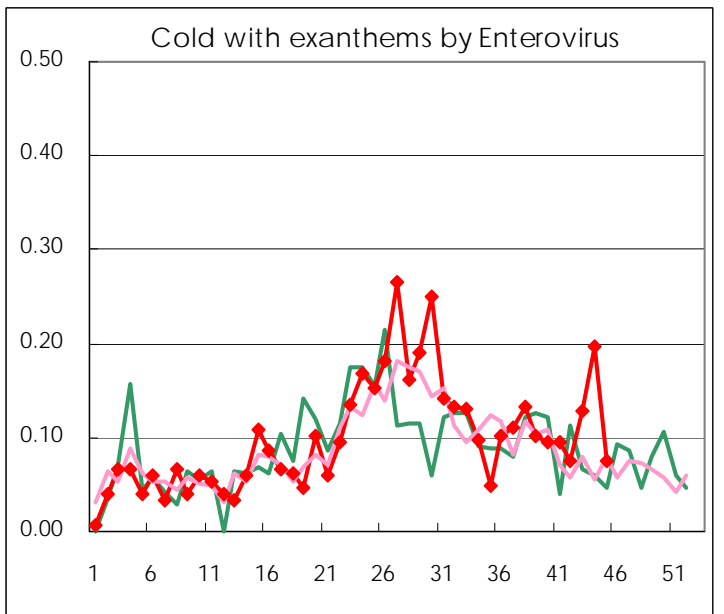
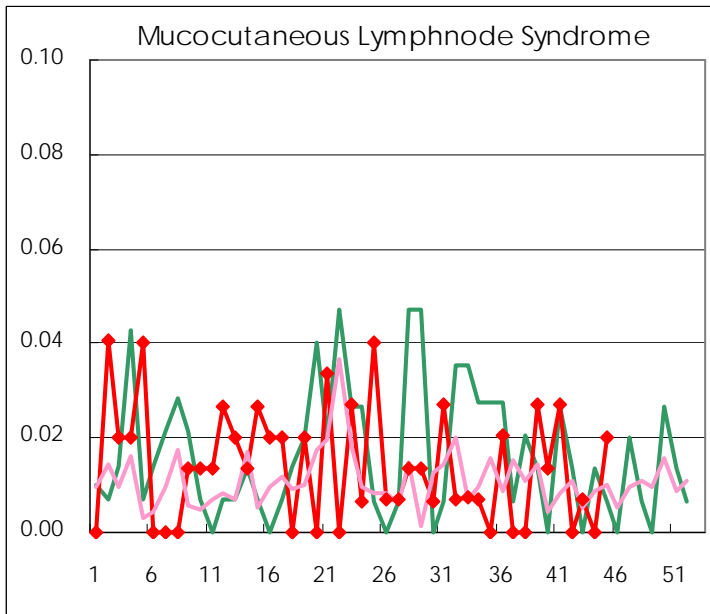
Diseases	2008				
	42nd	43rd	44th	45th	/sentinel
Respiratory syncytial virus infection	96	113	156	114	0.77
Pharyngoconjunctival fever	18	28	27	33	0.22
Group A streptococcal pharyngitis	155	232	234	185	1.25
Infectious gastroenteritis	515	605	675	730	4.93
Chickenpox	88	84	111	120	0.81
Hand, foot, and mouth disease	141	166	129	98	0.66
Erythema infectiosum	6	27	26	15	0.10
Exanthem subitum	96	111	102	83	0.56
Pertussis	3	6	4	1	0.01
Herpangina	29	27	14	20	0.14
Mumps	104	84	70	102	0.69
Cold with exanthems by Enterovirus	11	19	28	11	0.07
Mucocutaneous Lymphnode Syndrome		1		3	0.02
Influenza	14	9	11	30	0.11
Acute hemorrhagic conjunctivitis			1		
Epidemic keratoconjunctivitis	8	20	12	13	0.34
Bacterial meningitis			1		
Aseptic meningitis		1			
Mycoplasma pneumonia	6	13	8	16	0.67
Chlamydial pneumonia (excluding psittacosis)	2	3	2		

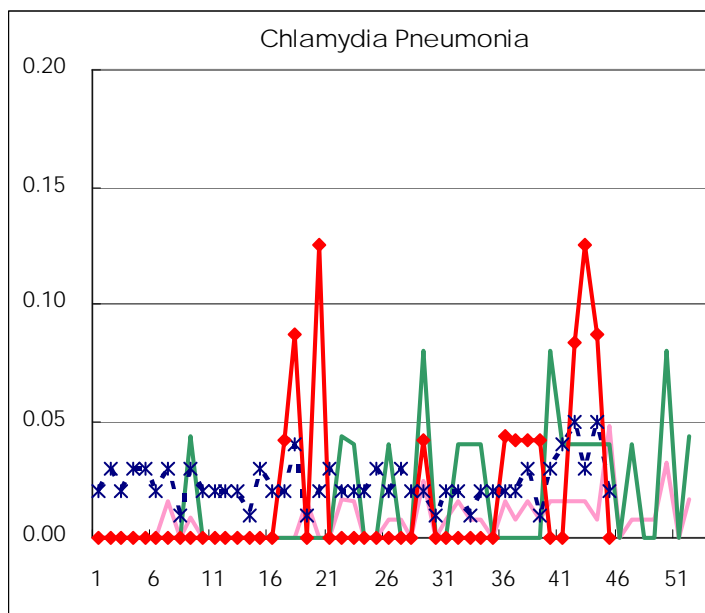
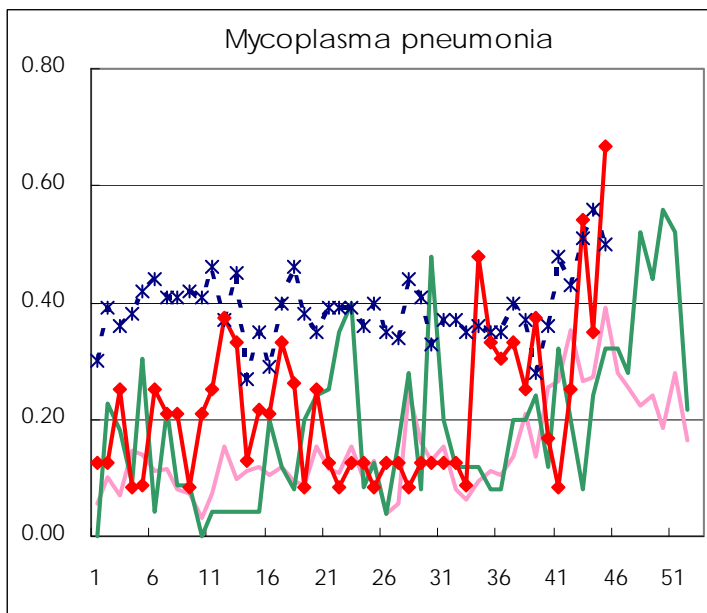
(Blank means 0.)

Disease Trend Graph (weekly reported cases per sentinel in comparison)









Number of sentinel facilities
for weekly reporting

Types of sentinels	Number of sentinels	Sentinels having reported
Pediatric	150	148
Influenza	290	283
Ophthalmic	39	38
Specially-designated	24	24

Tokyo Metropolitan Government
Infectious Disease Surveillance Center