
INFECTIOUS DISEASES WEEKLY REPORT

TOKYO IDWR

Tokyo Metropolitan Infectious Disease Surveillance Center

20 November 2008 / Number 46

Surveillance System in Tokyo, Japan

The infectious diseases which all physicians must report

All physicians must report to health centers the incidence of the diseases which are shown at page one. Health centers electronically report the individual cases to Tokyo Metropolitan Infectious Disease Surveillance Center.

The infectious diseases required to be reported by the sentinels

The numbers of patients who visit the sentinel clinics or hospitals during a week are reported to health centers in Tokyo. And they electronically report the numbers to Tokyo Metropolitan Infectious Disease Surveillance Center. We have about 400 sentinel clinics and hospitals in Tokyo.

1st Week is early January and 52nd Week is end of December.

Tokyo Metropolitan Institute of Public Health
Epidemiological Information Office

TEL:81-3-3363-3213 FAX:81-3-5332-7365

e-mail:idsc@tokyo-eiken.go.jp

URL:idsc.tokyo-eiken.go.jp/

Number of patients with the diseases which all physicians must report

Category	Diseases	Tokyo				Cum 2008	Japan	
		43rd	44th	45th	46th		46th	Cum 2008
I	Ebola hemorrhagic fever							
	Crimean-Congo hemorrhagic fever							
	Smallpox							
	South American hemorrhagic fever							
	Plague							
	Marburg disease							
	Lassa fever							
II	Acute poliomyelitis							1
	Tuberculosis	97	82	59	55	3806	302	24128
	Diphtheria							
	Severe Acute Respiratory Syndrome(SARS)							
	Avian influenza H5N1							
III	Cholera					6		45
	Shigellosis	1	1	1	1	58	3	275
	Enterohemorrhagic Escherichia coli infection	9	5	6	4	386	54	4,090
	Typhoid fever		1			12		51
	Paratyphoid fever					5		25
IV	Hepatitis E	1				7	1	40
	West Nile fever							
	Hepatitis A			1		27	1	156
	Echinococcosis							15
	Yellow fever							
	Psittacosis						1	8
	Omsk hemorrhagic fever							
	Relapsing fever							
	Kyasanur forest disease							
	Q fever					1		3
	Rabies							
	Coccidioidomycosis							2
	Monkeypox							
	Hemorrhagic fever with renal syndrome							
	Western equine encephalitis							
	Tick-borne encephalitis							
	Anthrax							
	Scrub typhus(Tsutsugamushi disease)				4	9	33	212
	Dengue fever		3		2	30	1	94
	Eastern equine encephalitis							
	Avian influenza (excluding H5N1)							
	Nipah virus infection							
	Japanese spotted fever						3	106
	Japanese encephalitis							3
	Epidemic typhus							
	Hantavirus pulmonary syndrome							
	Herpes B virus infection							
	Glanders							
	Brucellosis							4
	Venezuelan equine encephalitis							
	Hendra virus infection							
	Botulism							2
Malaria				1	22		49	
Tularemia							4	
Lyme disease							4	
Lyssavirus infection(excluding rabies)								
Rift valley fever								
Melioidosis								
Legionellosis	3		2	2	73	12	789	
Leptospirosis			1		4	2	35	
Rocky mountain spotted fever								

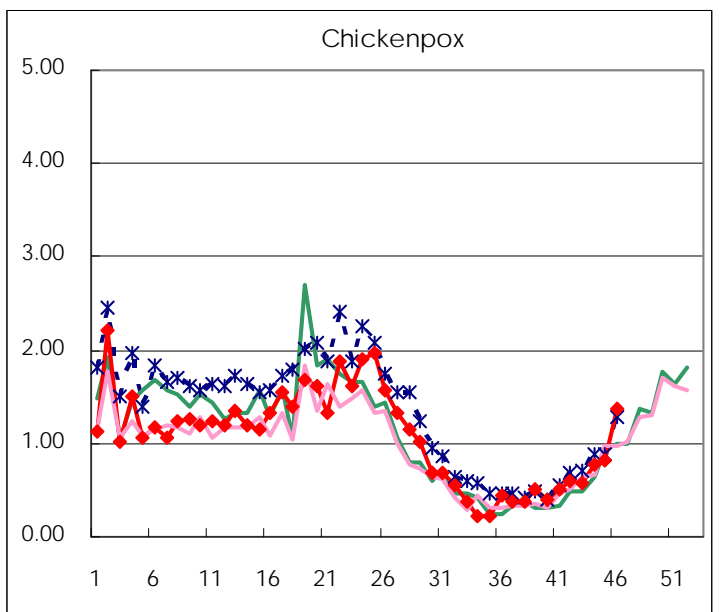
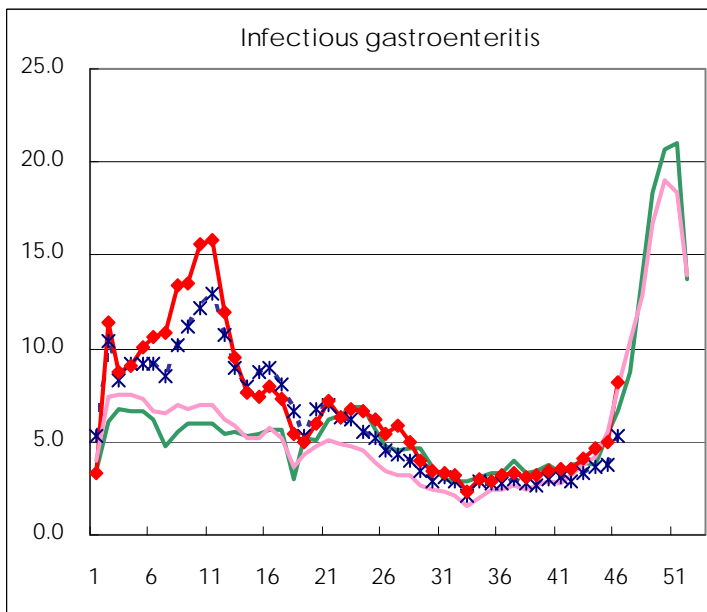
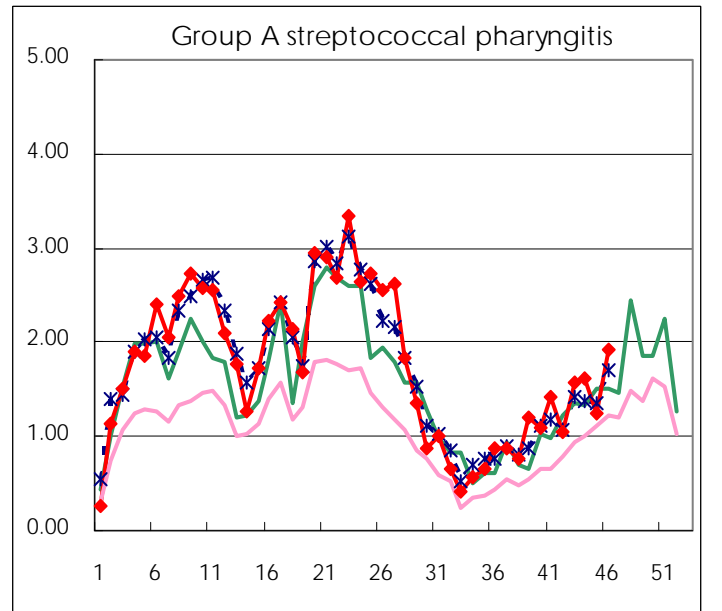
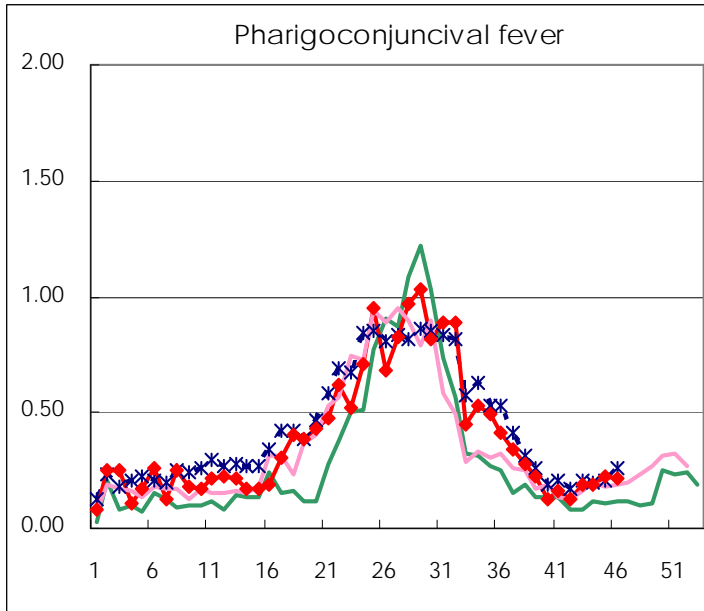
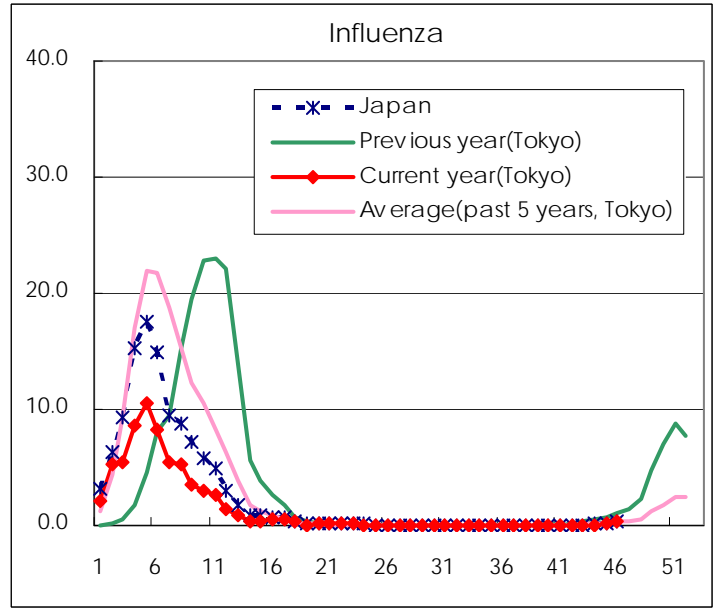
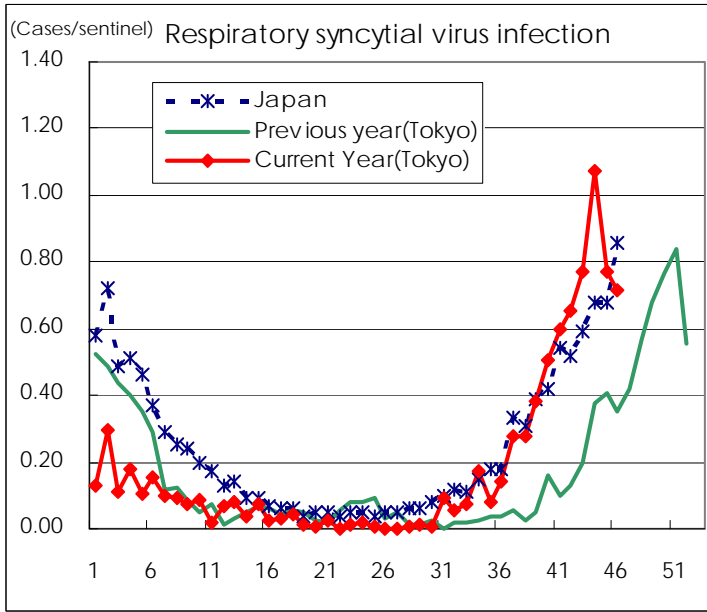
Category	Diseases	Tokyo					Japan	
		43rd	44th	45th	46th	Cum 2008	46th	Cum 2008
V	Amebiasis	7	3	2	6	171	18	747
	Viral hepatitis(excluding hepatitis A and E)		3		1	29	1	209
	Acute encephalitis(excluding JE and WNE)	1			1	10	1	163
	Cryptosporidiosis					4	1	9
	Creutzfeldt-Jakob disease			1		13	1	134
	Severe invasive streptococcal infections(TSLS)					19	1	103
	Acquired immunodeficiency syndrome (AIDS)	16	16	14	10	485	12	1,355
	Giardiasis					19		68
	Meningococcal meningitis					2		10
	Congenital rubella syndrome							1
	Syphilis	3	3	2	6	174	6	720
	Tetanus					5	4	112
	Vancomycin-resistant S. aureus infection							
	Vancomycin-resistant Enterococcus infection		2	1		13		75
	Rubella	1			1	42	1	286
	Measles	4	2	3	1	1,164	15	10,921

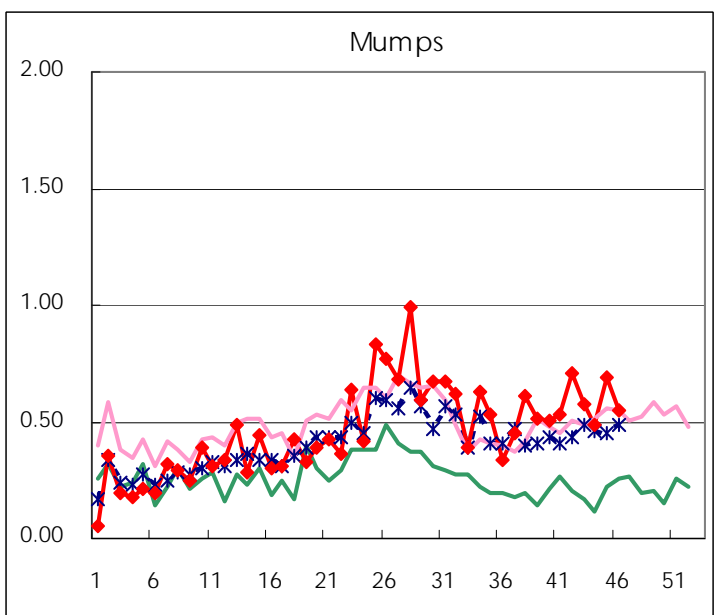
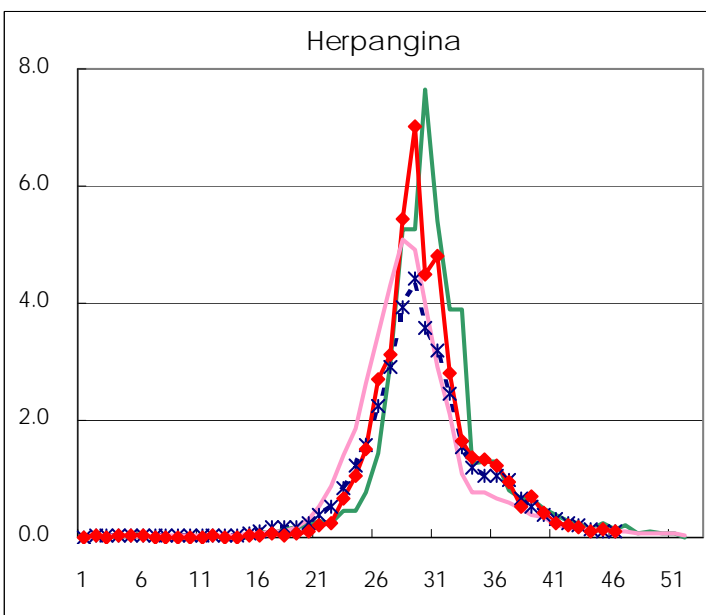
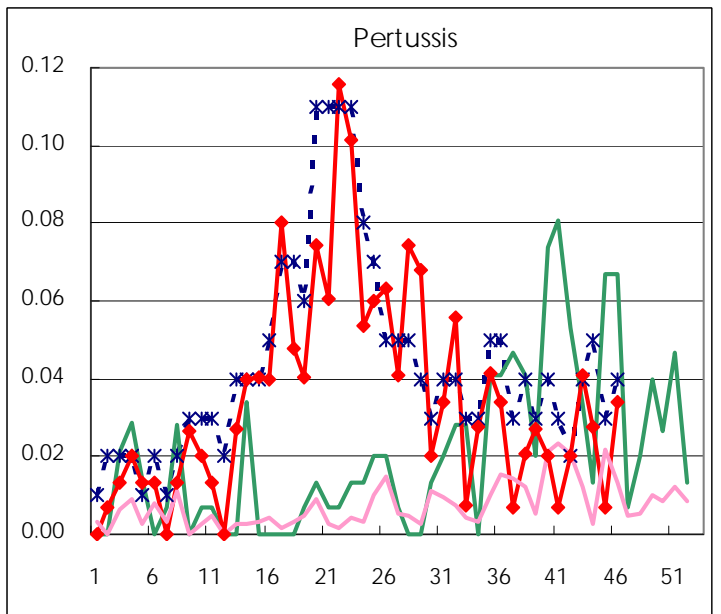
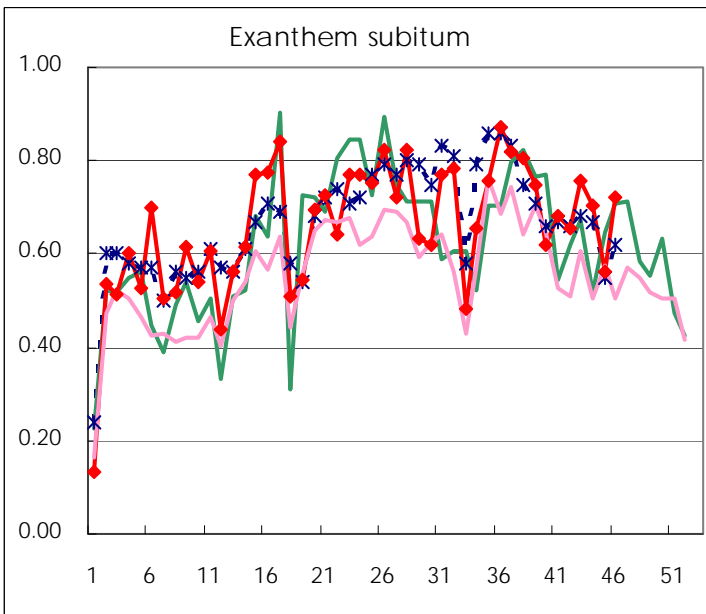
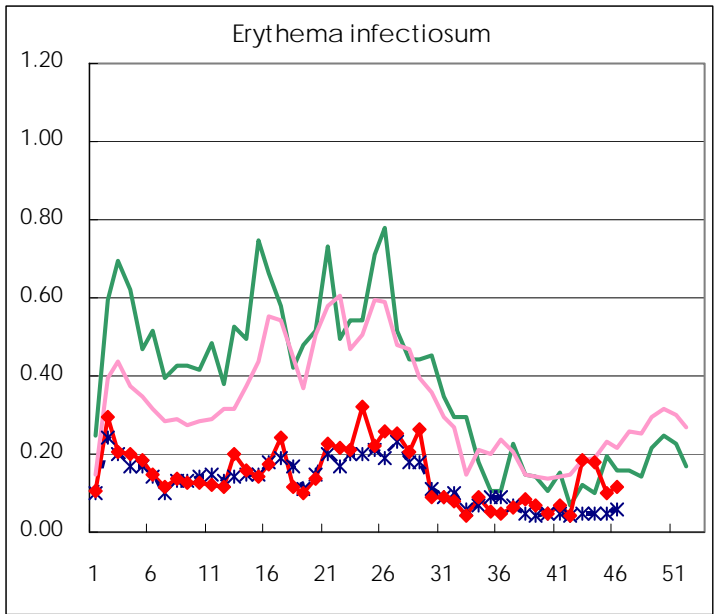
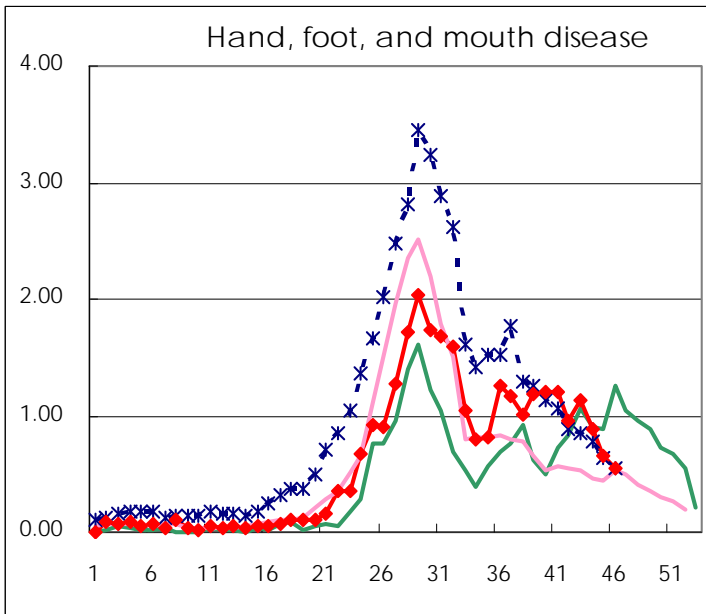
Number of patients with the diseases to be reported
by the designated clinics and hospitals

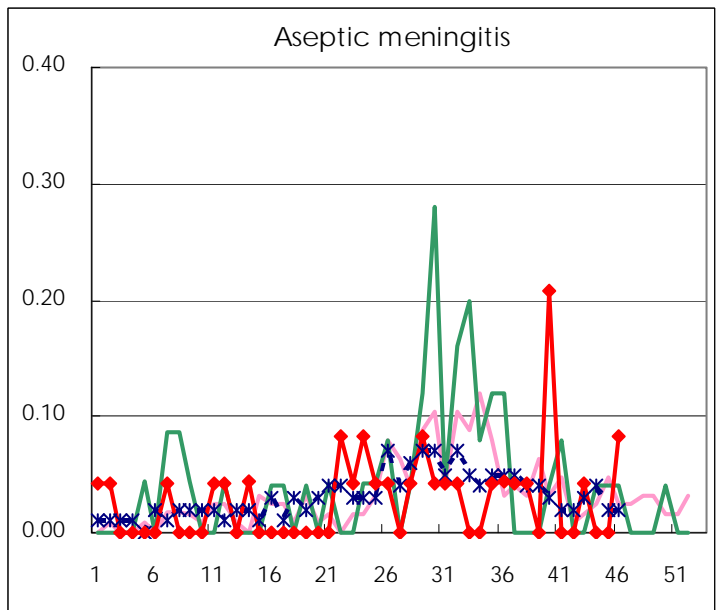
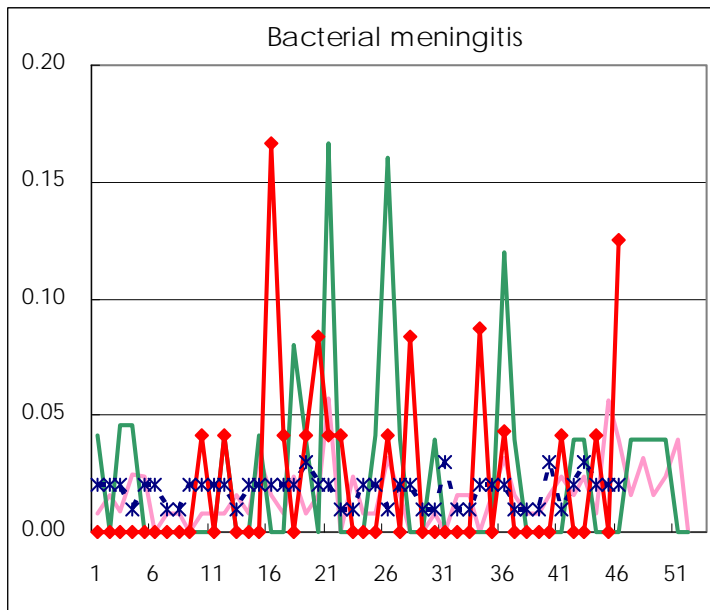
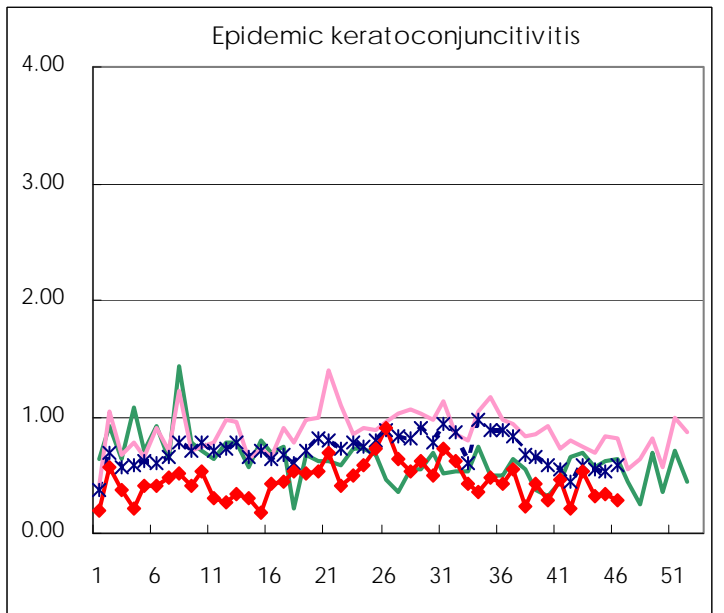
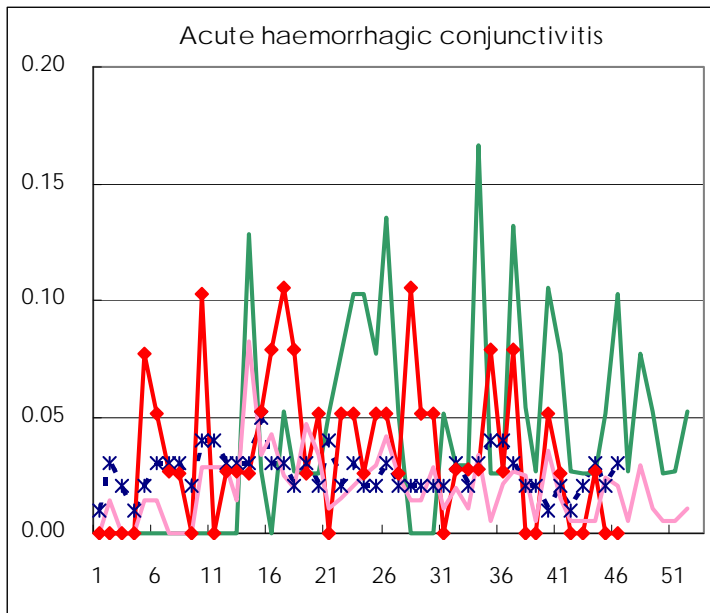
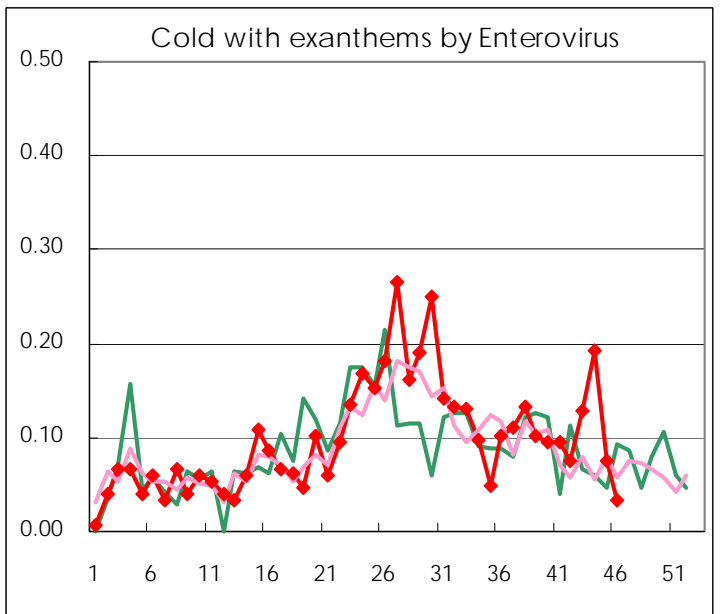
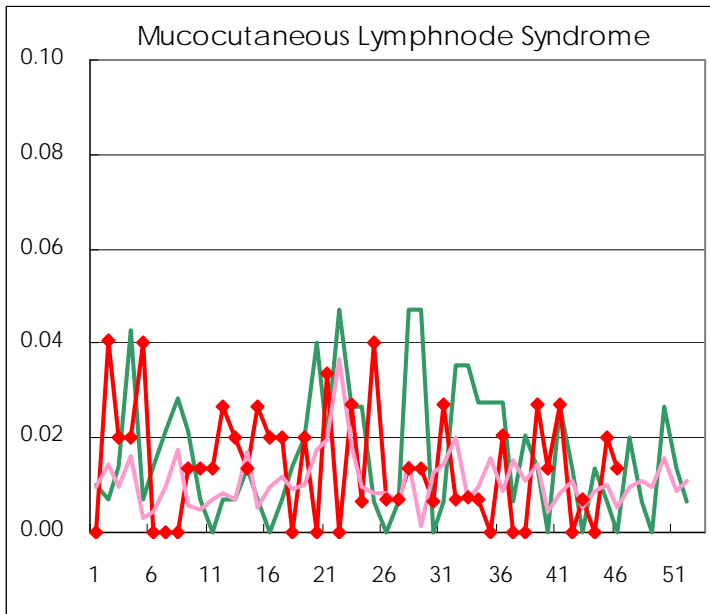
Diseases	2008				
	43rd	44th	45th	46th	/sentinel
Respiratory syncytial virus infection	113	156	114	106	0.72
Pharyngoconjunctival fever	28	27	33	32	0.22
Group A streptococcal pharyngitis	232	234	185	284	1.92
Infectious gastroenteritis	605	678	730	1,209	8.17
Chickenpox	84	111	120	204	1.38
Hand, foot, and mouth disease	166	129	98	80	0.54
Erythema infectiosum	27	26	15	17	0.11
Exanthem subitum	111	102	83	107	0.72
Pertussis	6	4	1	5	0.03
Herpangina	27	14	20	15	0.10
Mumps	84	70	102	81	0.55
Cold with exanthems by Enterovirus	19	28	11	5	0.03
Mucocutaneous Lymphnode Syndrome	1		3	2	0.01
Influenza	9	11	30	77	0.27
Acute hemorrhagic conjunctivitis		1			
Epidemic keratoconjunctivitis	20	12	13	11	0.29
Bacterial meningitis		1		3	0.13
Aseptic meningitis	1			2	0.08
Mycoplasma pneumonia	13	8	16	9	0.38
Chlamydial pneumonia (excluding psittacosis)	3	2			

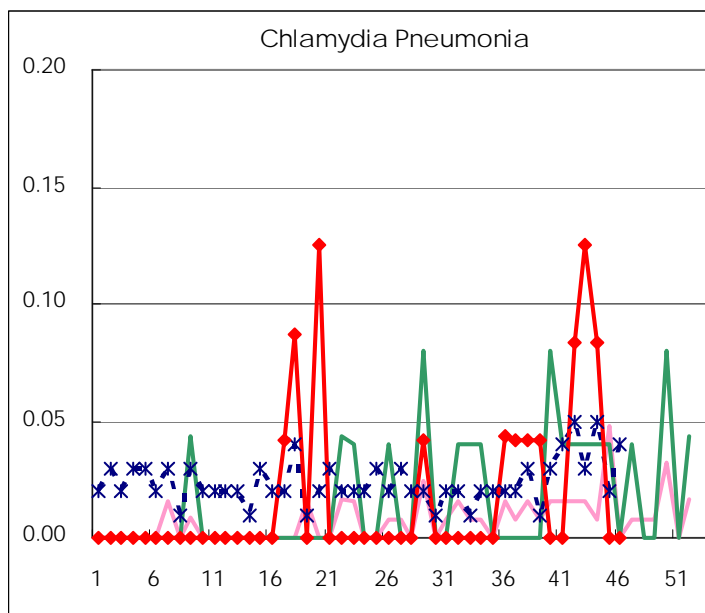
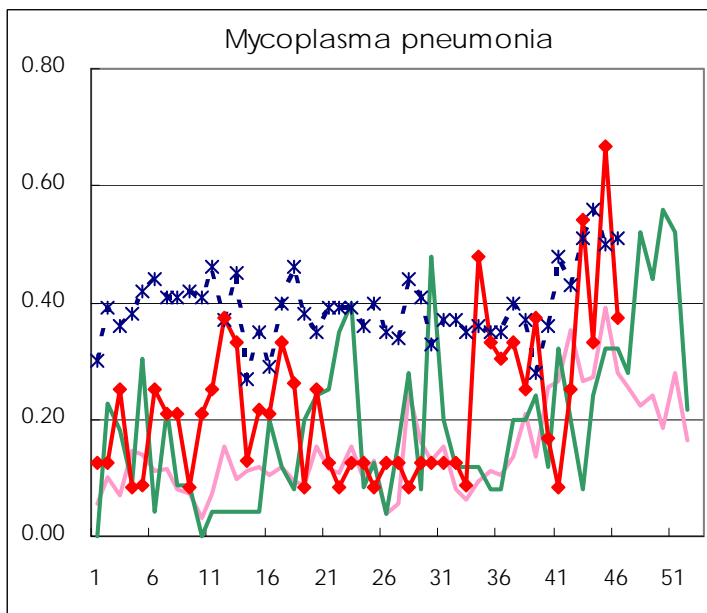
(Blank means 0.)

Disease Trend Graph (weekly reported cases per sentinel in comparison)









Number of sentinel facilities
for weekly reporting

Types of sentinels	Number of sentinels	Sentinels having reported
Pediatric	150	148
Influenza	290	287
Ophthalmic	39	38
Specially-designated	24	24

Tokyo Metropolitan Government
Infectious Disease Surveillance Center