
INFECTIOUS DISEASES WEEKLY REPORT

TOKYO IDWR

Tokyo Metropolitan Infectious Disease Surveillance Center

4 December 2008 / Number 48

Surveillance System in Tokyo, Japan

The infectious diseases which all physicians must report

All physicians must report to health centers the incidence of the diseases which are shown at page one. Health centers electronically report the individual cases to Tokyo Metropolitan Infectious Disease Surveillance Center.

The infectious diseases required to be reported by the sentinels

The numbers of patients who visit the sentinel clinics or hospitals during a week are reported to health centers in Tokyo. And they electronically report the numbers to Tokyo Metropolitan Infectious Disease Surveillance Center. We have about 400 sentinel clinics and hospitals in Tokyo.

1st Week is early January and 52nd Week is end of December.

Tokyo Metropolitan Institute of Public Health
Epidemiological Information Office

TEL:81-3-3363-3213 FAX:81-3-5332-7365

e-mail:idsc@tokyo-eiken.go.jp

URL:idsc.tokyo-eiken.go.jp/

Number of patients with the diseases which all physicians must report

Category	Diseases	Tokyo				Japan		
		45th	46th	47th	48th	Cum 2008	48th	Cum 2008
I	Ebola hemorrhagic fever							
	Crimean-Congo hemorrhagic fever							
	Smallpox							
	South American hemorrhagic fever							
	Plague							
	Marburg disease							
	Lassa fever							
II	Acute poliomyelitis							1
	Tuberculosis	66	71	85	43	3974	231	25189
	Diphtheria							
	Severe Acute Respiratory Syndrome(SARS)							
	Avian influenza H5N1							
III	Cholera					6		45
	Shigellosis	1	1	1	1	60	4	285
	Enterohemorrhagic Escherichia coli infection	6	4	4	8	398	52	4,185
	Typhoid fever					12	1	52
	Paratyphoid fever					5		25
IV	Hepatitis E					7		41
	West Nile fever							
	Hepatitis A	1		1	1	29	1	163
	Echinococcosis							16
	Yellow fever							
	Psittacosis							8
	Omsk hemorrhagic fever							
	Relapsing fever							
	Kyasanur forest disease							
	Q fever					1		3
	Rabies							
	Coccidioidomycosis							2
	Monkeypox							
	Hemorrhagic fever with renal syndrome							
	Western equine encephalitis							
	Tick-borne encephalitis							
	Anthrax							
	Scrub typhus(Tsutsugamushi disease)		4	1		10	36	301
	Dengue fever		2			30		96
	Eastern equine encephalitis							
	Avian influenza (excluding H5N1)							
	Nipah virus infection							
	Japanese spotted fever						2	116
	Japanese encephalitis							3
	Epidemic typhus							
	Hantavirus pulmonary syndrome							
	Herpes B virus infection							
	Glanders							
	Brucellosis							4
	Venezuelan equine encephalitis							
	Hendra virus infection							
Botulism							2	
Malaria		1			22	1	51	
Tularemia							5	
Lyme disease							4	
Lyssavirus infection(excluding rabies)								
Rift valley fever								
Melioidosis								
Legionellosis	2	2	1		74	5	818	
Leptospirosis	1				4		37	
Rocky mountain spotted fever								

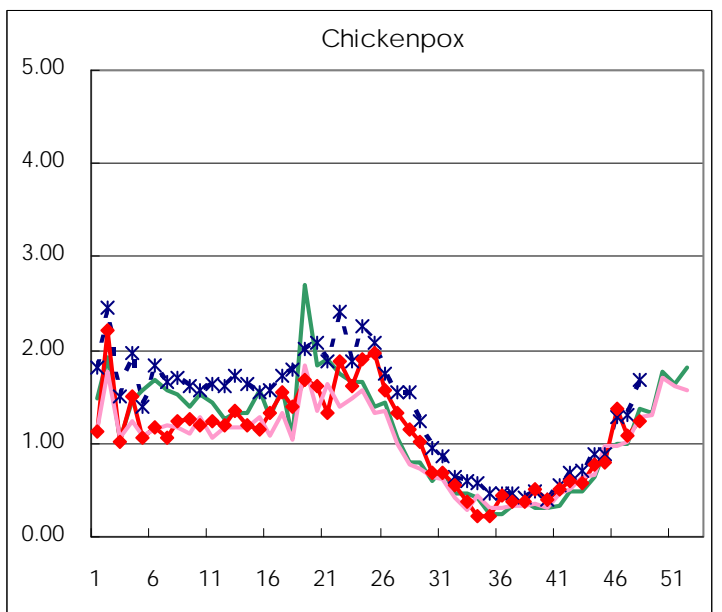
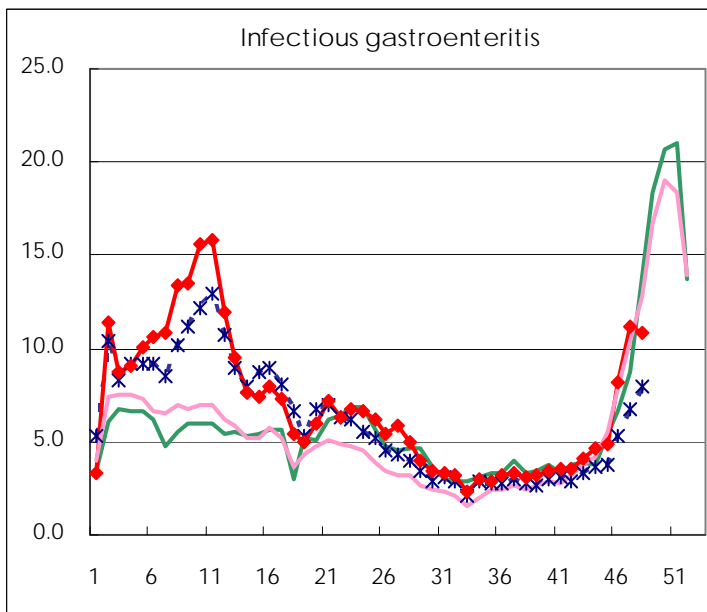
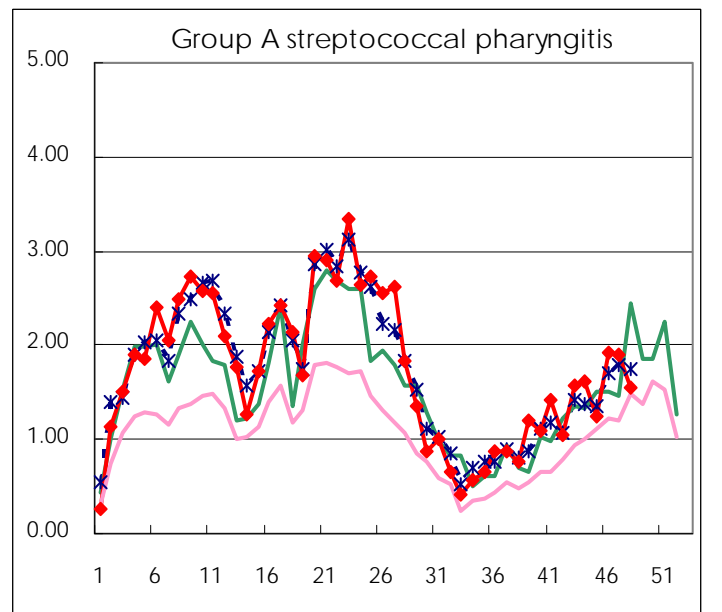
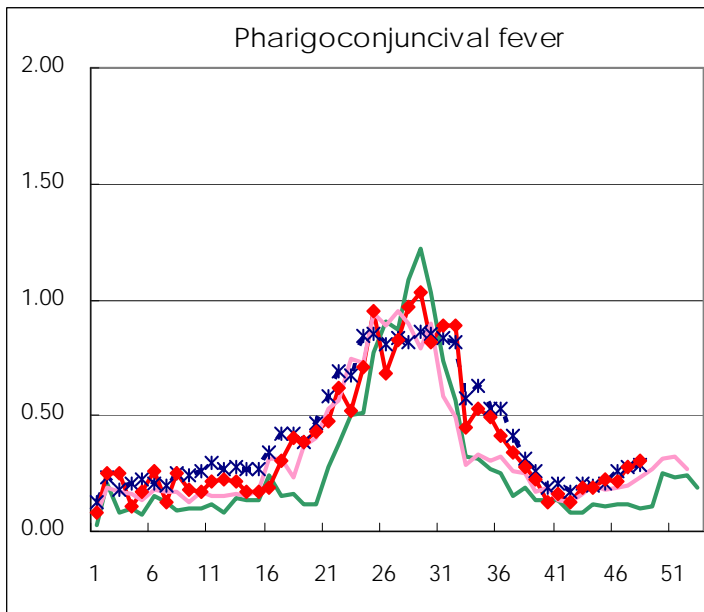
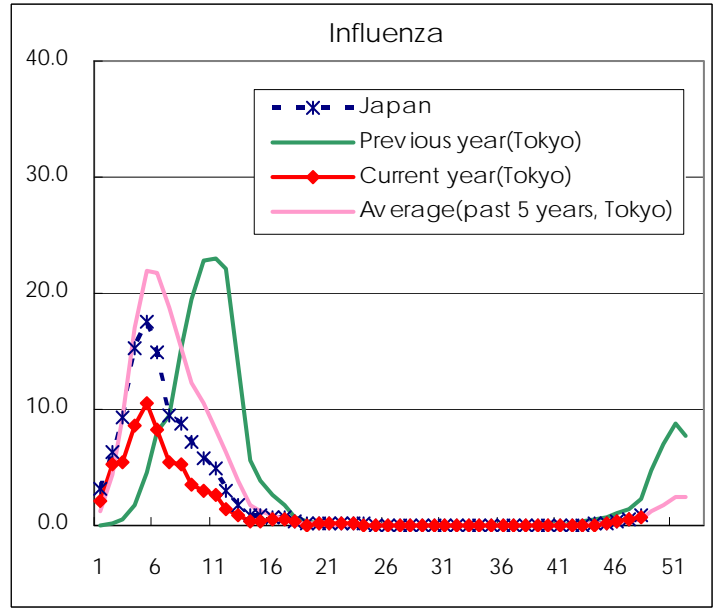
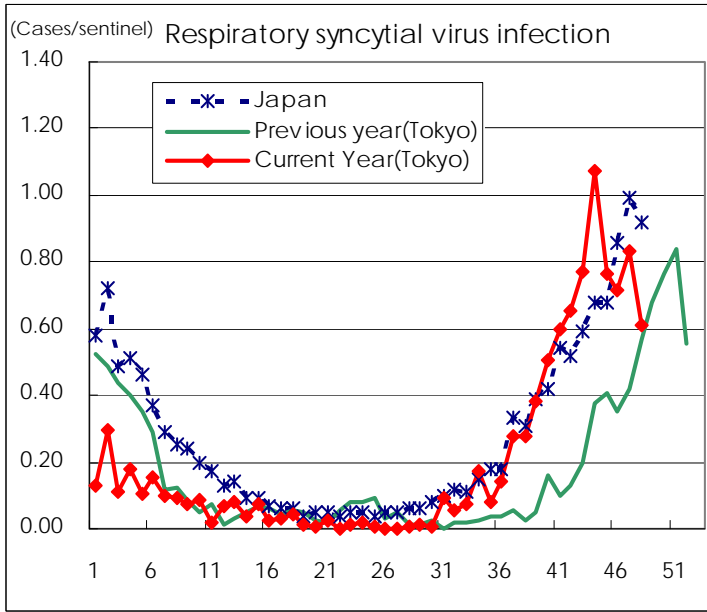
Category	Diseases	Tokyo					Japan	
		45th	46th	47th	48th	Cum 2008	48th	Cum 2008
V	Amebiasis	2	6	3	5	179	7	778
	Viral hepatitis(excluding hepatitis A and E)		1		1	30	2	215
	Acute encephalitis(excluding JE and WNE)		1			10		166
	Cryptosporidiosis					4		9
	Creutzfeldt-Jakob disease	1		1		14		138
	Severe invasive streptococcal infections(TSLS)					19		107
	Acquired immunodeficiency syndrome (AIDS)	14	10	13	4	502	10	1,372
	Giardiasis					19	1	70
	Meningococcal meningitis					2		10
	Congenital rubella syndrome							1
	Syphilis	2	6	3	4	181	5	753
	Tetanus					5		113
	Vancomycin-resistant S. aureus infection							
	Vancomycin-resistant Enterococcus infection	1			2	15		79
	Rubella		1	1	1	44		290
	Measles	3	2	1		1,166	10	10,944

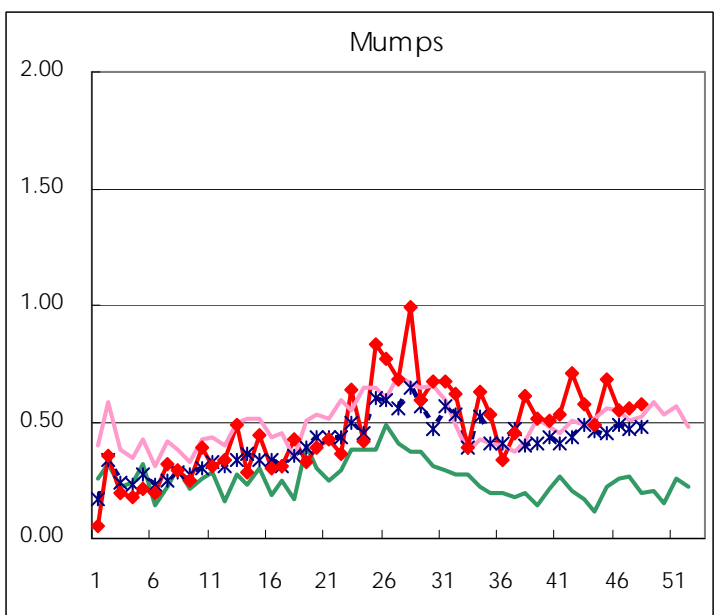
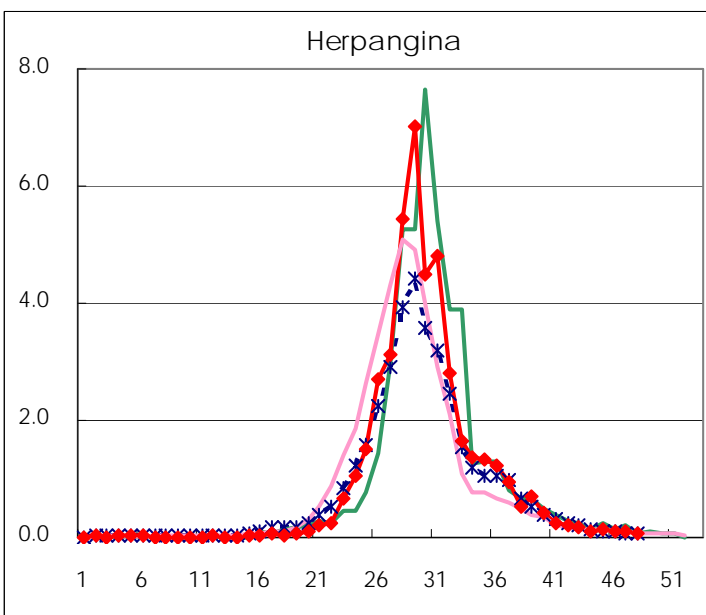
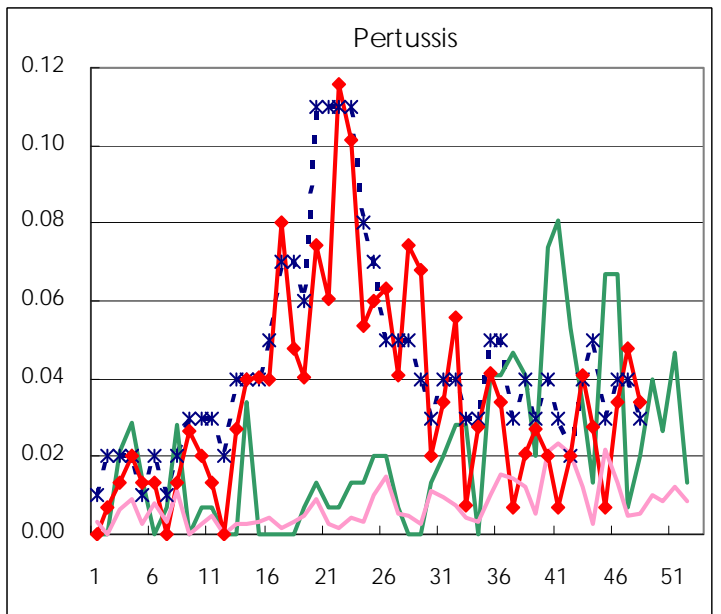
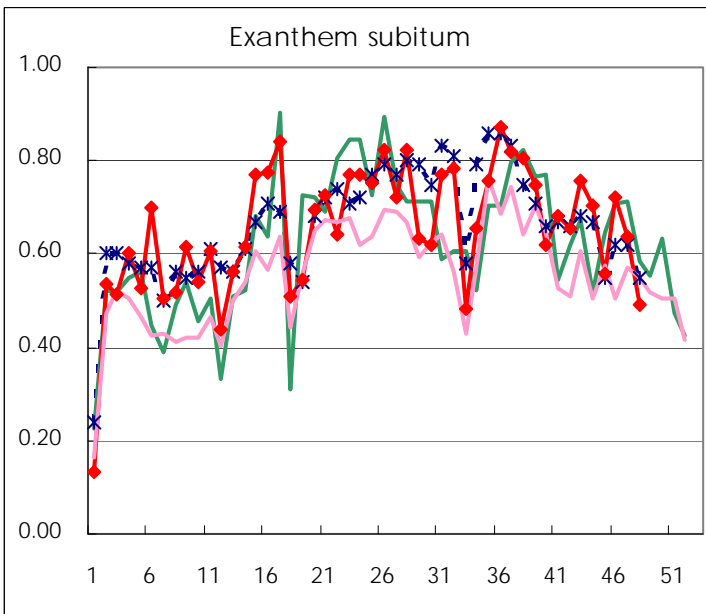
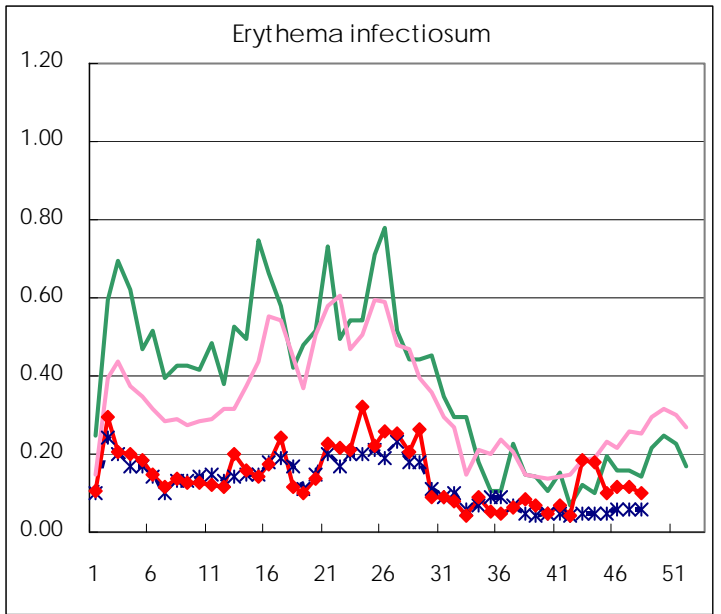
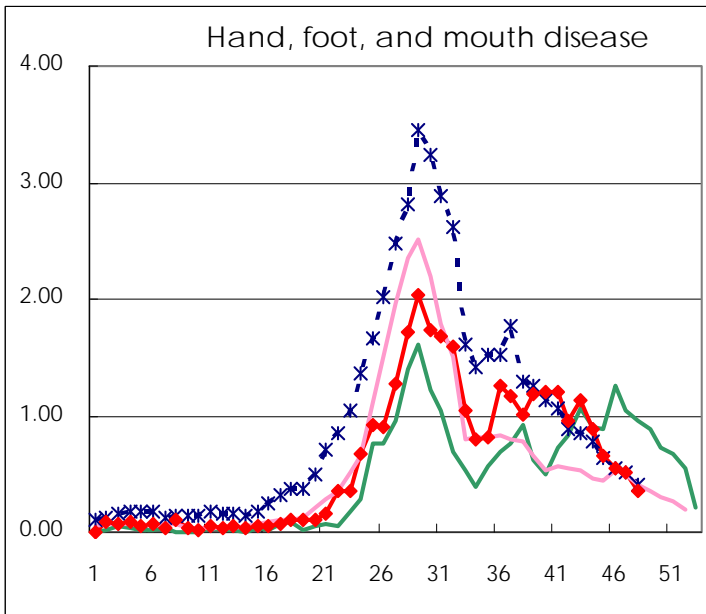
Number of patients with the diseases to be reported
by the designated clinics and hospitals

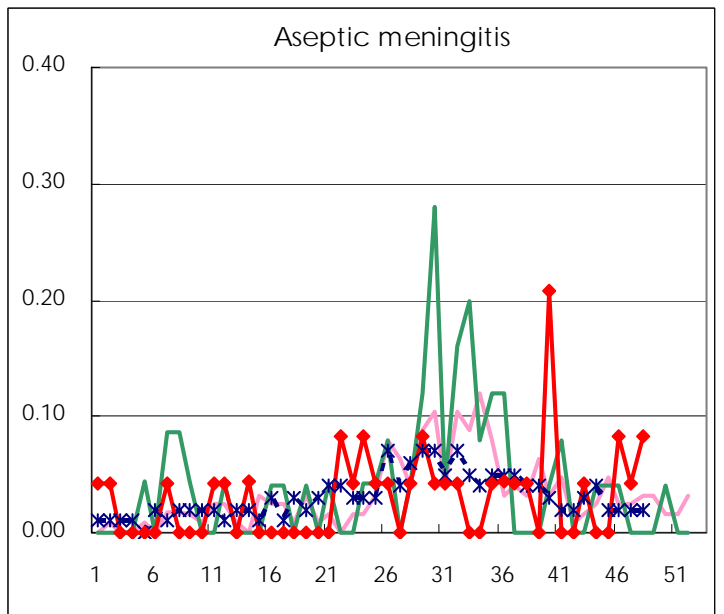
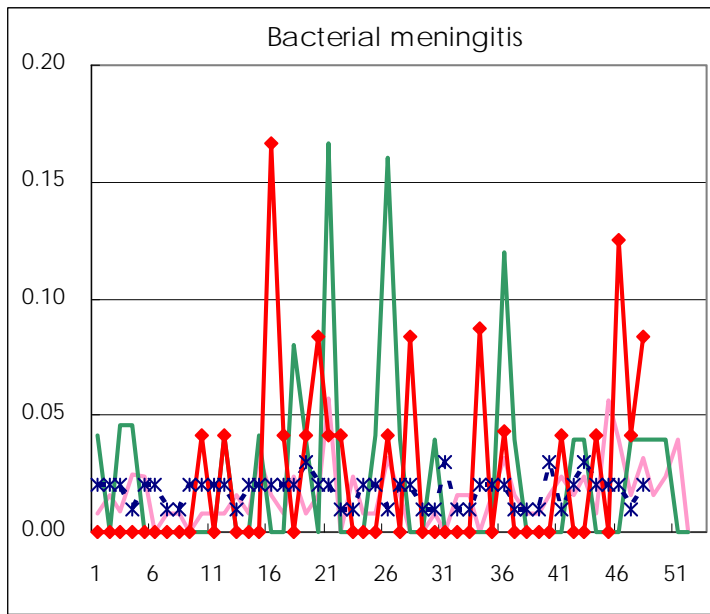
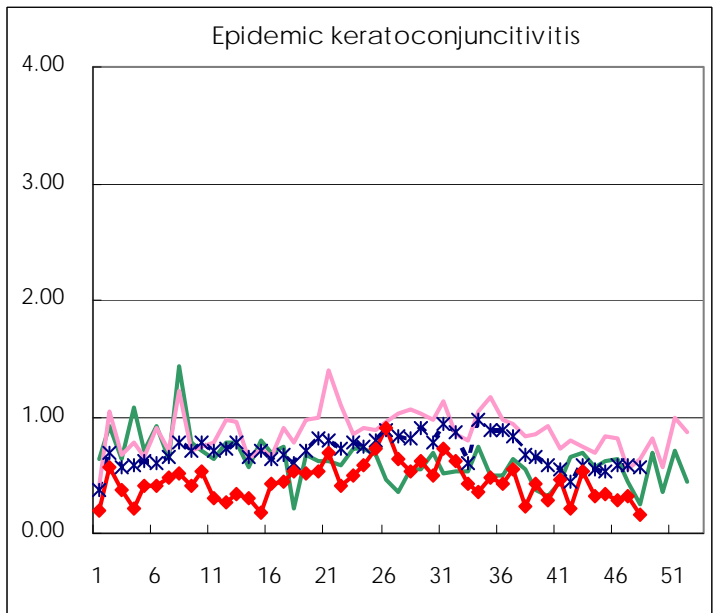
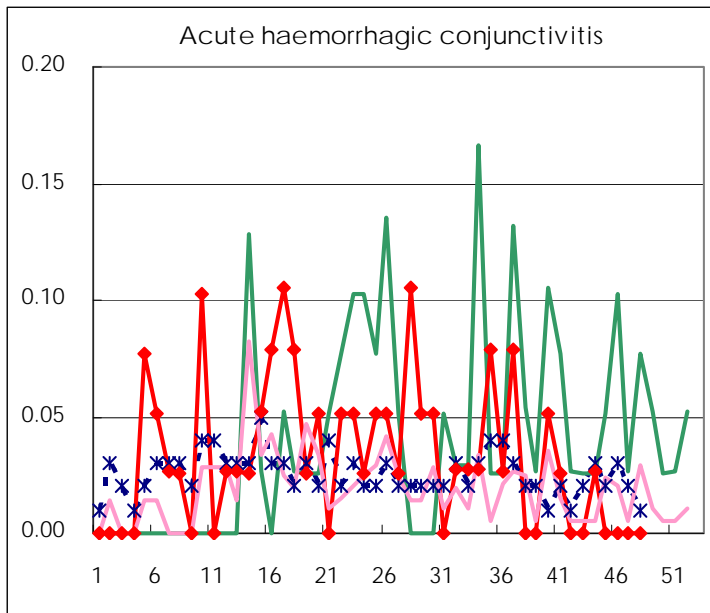
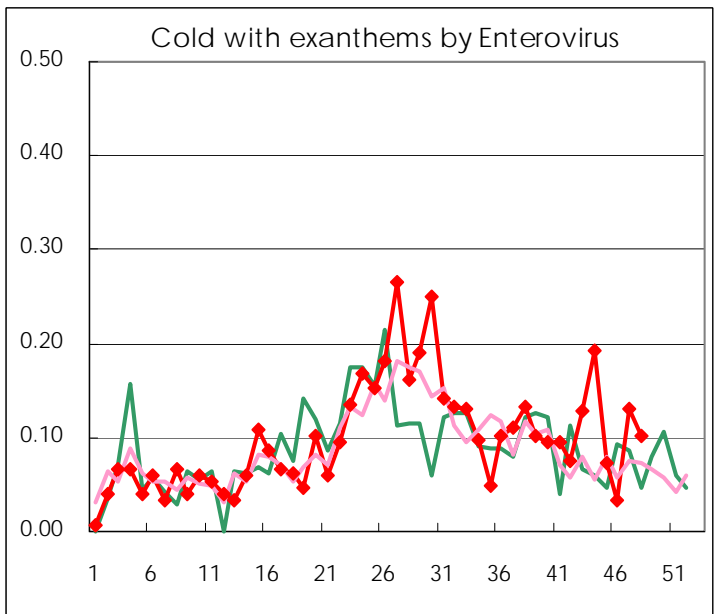
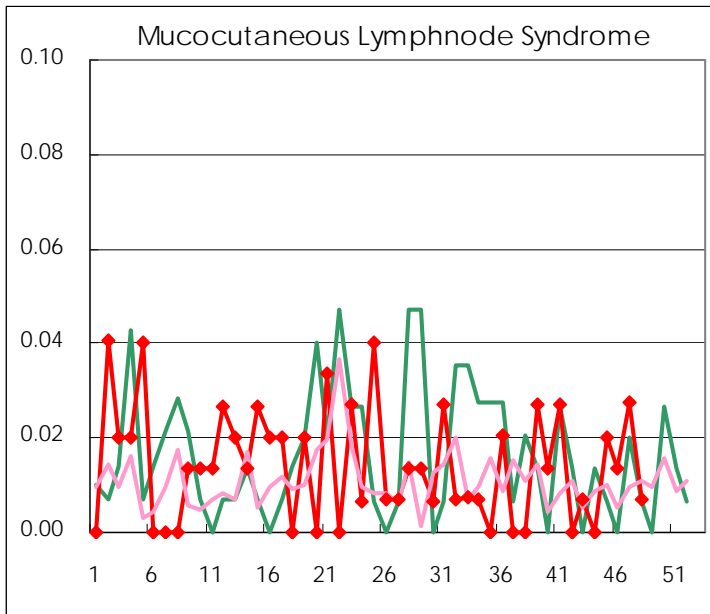
Diseases	2008				
	45th	46th	47th	48th	/sentinel
Respiratory syncytial virus infection	114	106	122	90	0.61
Pharyngoconjunctival fever	33	32	40	45	0.31
Group A streptococcal pharyngitis	185	284	278	228	1.55
Infectious gastroenteritis	730	1,209	1,637	1,592	10.83
Chickenpox	120	204	158	183	1.24
Hand, foot, and mouth disease	98	80	76	52	0.35
Erythema infectiosum	15	17	17	15	0.10
Exanthem subitum	83	107	93	72	0.49
Pertussis	1	5	7	5	0.03
Herpangina	20	15	13	12	0.08
Mumps	102	81	81	85	0.58
Cold with exanthems by Enterovirus	11	5	19	15	0.10
Mucocutaneous Lymphnode Syndrome	3	2	4	1	0.01
Influenza	30	77	150	184	0.65
Acute hemorrhagic conjunctivitis					
Epidemic keratoconjunctivitis	13	11	12	6	0.16
Bacterial meningitis		3	1	2	0.08
Aseptic meningitis		2	1	2	0.08
Mycoplasma pneumonia	16	9	13	9	0.38
Chlamydial pneumonia (excluding psittacosis)				3	0.13

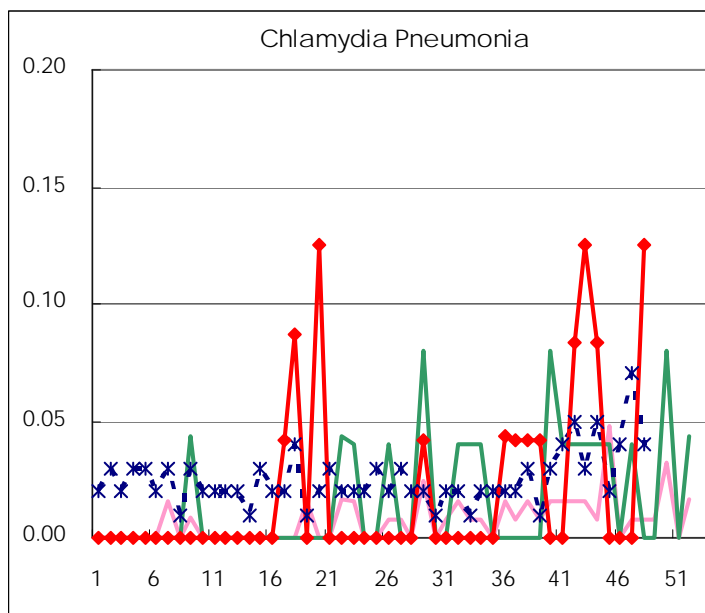
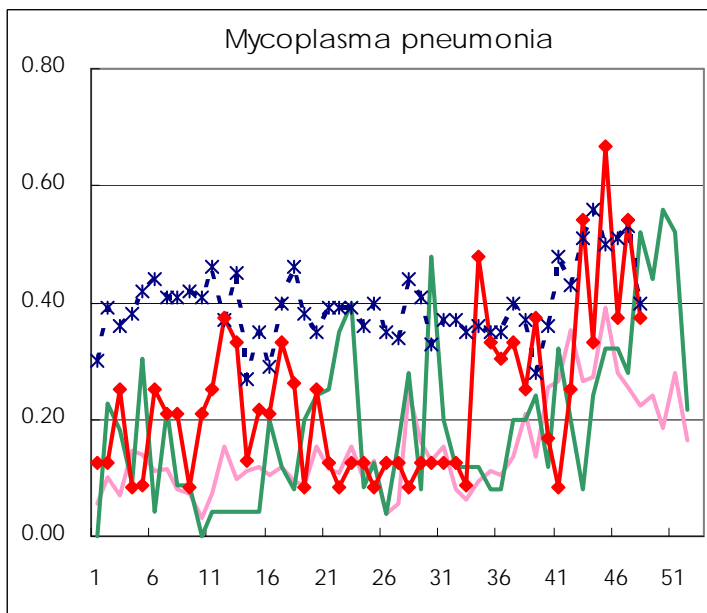
(Blank means 0.)

Disease Trend Graph (weekly reported cases per sentinel in comparison)









Number of sentinel facilities
for weekly reporting

Types of sentinels	Number of sentinels	Sentinels having reported
Pediatric	150	147
Influenza	290	284
Ophthalmic	39	38
Specially-designated	24	24

Tokyo Metropolitan Government
Infectious Disease Surveillance Center