
INFECTIOUS DISEASES WEEKLY REPORT

TOKYO IDWR

Tokyo Metropolitan Infectious Disease Surveillance Center

11 December 2008 / Number 49

Surveillance System in Tokyo, Japan

The infectious diseases which all physicians must report

All physicians must report to health centers the incidence of the diseases which are shown at page one. Health centers electronically report the individual cases to Tokyo Metropolitan Infectious Disease Surveillance Center.

The infectious diseases required to be reported by the sentinels

The numbers of patients who visit the sentinel clinics or hospitals during a week are reported to health centers in Tokyo. And they electronically report the numbers to Tokyo Metropolitan Infectious Disease Surveillance Center. We have about 400 sentinel clinics and hospitals in Tokyo.

1st Week is early January and 52nd Week is end of December.

Tokyo Metropolitan Institute of Public Health
Epidemiological Information Office

TEL:81-3-3363-3213 FAX:81-3-5332-7365

e-mail:idsc@tokyo-eiken.go.jp

URL:idsc.tokyo-eiken.go.jp/

Number of patients with the diseases which all physicians must report

Category	Diseases	Tokyo				Cum 2008	Japan	
		46th	47th	48th	49th		49th	Cum 2008
I	Ebola hemorrhagic fever							
	Crimean-Congo hemorrhagic fever							
	Smallpox							
	South American hemorrhagic fever							
	Plague							
	Marburg disease							
	Lassa fever							
II	Acute poliomyelitis							1
	Tuberculosis	71	90	58	48	4042	316	25871
	Diphtheria							
	Severe Acute Respiratory Syndrome(SARS)							
	Avian influenza H5N1							
III	Cholera					6		45
	Shigellosis	1	1	1	1	61	12	298
	Enterohemorrhagic Escherichia coli infection	4	4	8	3	401	34	4,231
	Typhoid fever				1	13	3	55
	Paratyphoid fever				1	6	1	26
IV	Hepatitis E					7		41
	West Nile fever							
	Hepatitis A		1	1	1	30	1	165
	Echinococcosis							17
	Yellow fever							
	Psittacosis							9
	Omsk hemorrhagic fever							
	Relapsing fever							
	Kyasanur forest disease							
	Q fever					1		3
	Rabies							
	Coccidioidomycosis							2
	Monkeypox							
	Hemorrhagic fever with renal syndrome							
	Western equine encephalitis							
	Tick-borne encephalitis							
	Anthrax							
	Scrub typhus(Tsutsugamushi disease)	4	1			10	33	346
	Dengue fever	2			2	32	1	98
	Eastern equine encephalitis							
	Avian influenza (excluding H5N1)							
	Nipah virus infection							
	Japanese spotted fever						2	122
	Japanese encephalitis							3
	Epidemic typhus							
	Hantavirus pulmonary syndrome							
	Herpes B virus infection							
	Glanders							
	Brucellosis							4
	Venezuelan equine encephalitis							
	Hendra virus infection							
	Botulism							2
Malaria	1				22		52	
Tularemia							5	
Lyme disease							4	
Lyssavirus infection(excluding rabies)								
Rift valley fever								
Melioidosis								
Legionellosis	2	1		1	75	6	825	
Leptospirosis					4	1	41	
Rocky mountain spotted fever								

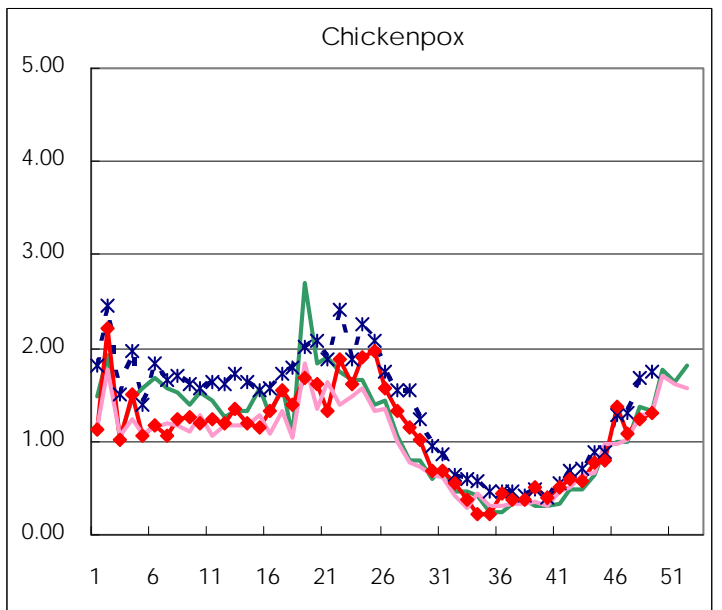
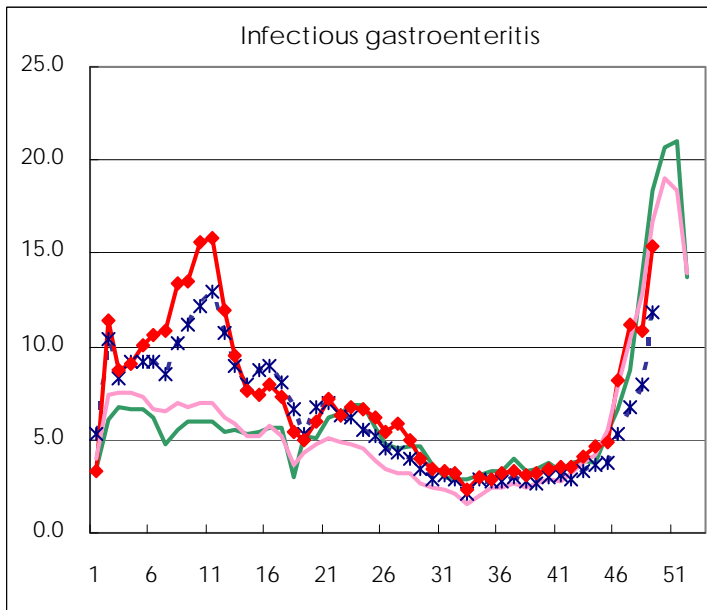
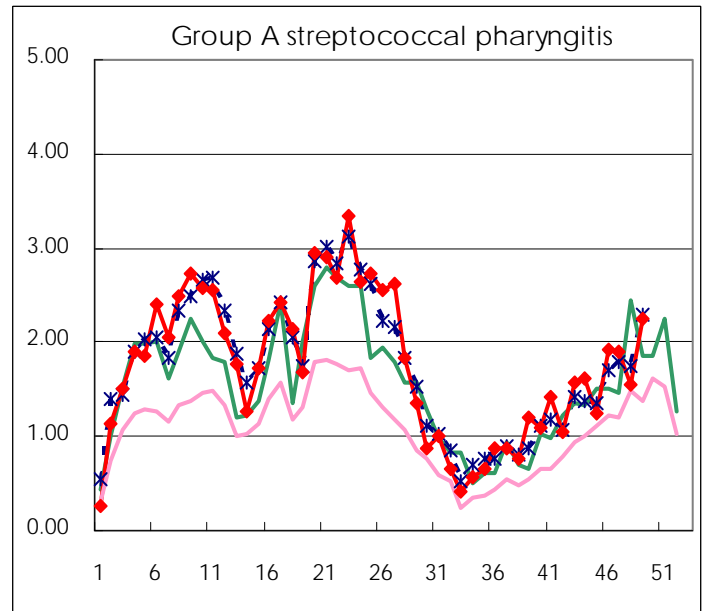
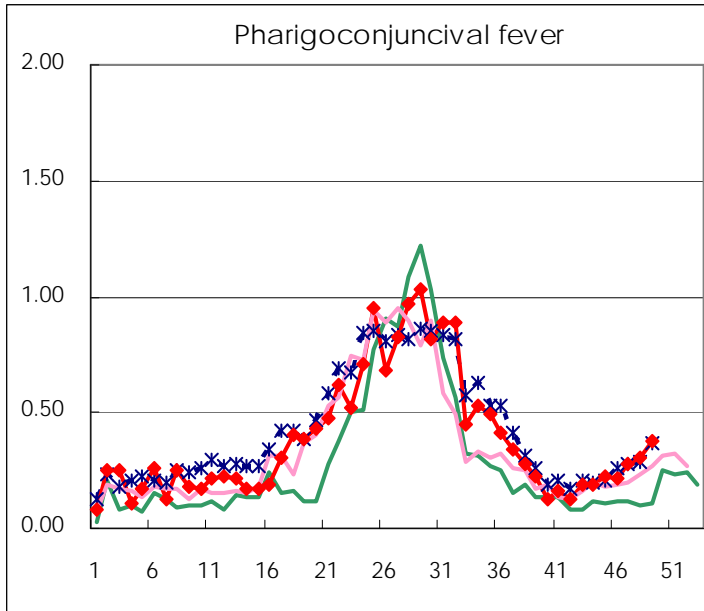
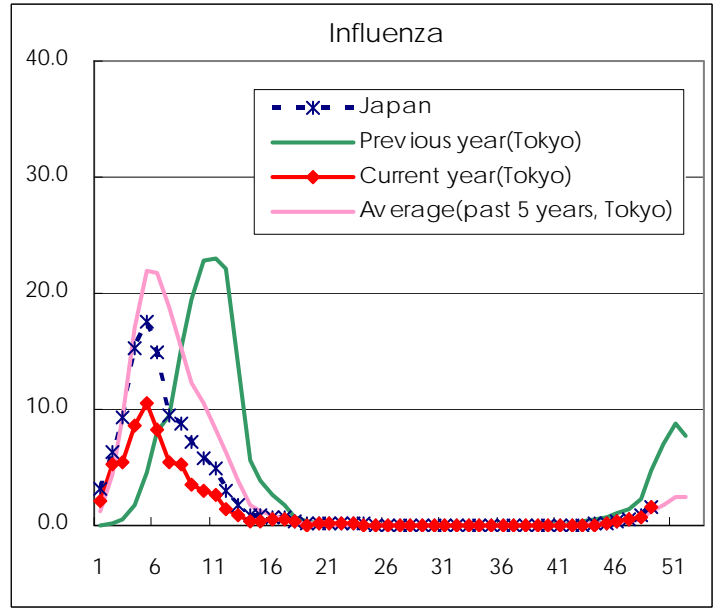
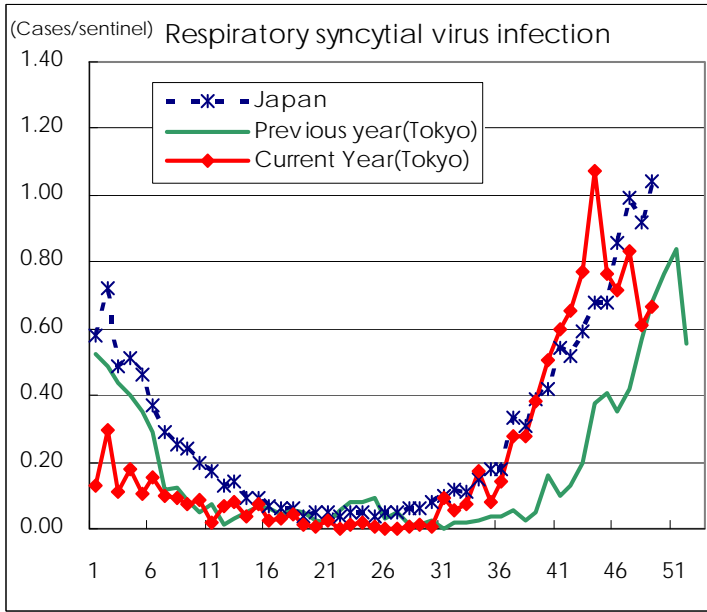
Category	Diseases	Tokyo					Japan	
		46th	47th	48th	49th	Cum 2008	49th	Cum 2008
V	Amebiasis	6	3	5	3	182	8	794
	Viral hepatitis(excluding hepatitis A and E)	1		1		30	2	218
	Acute encephalitis(excluding JE and WNE)	1			1	11	1	171
	Cryptosporidiosis					4		9
	Creutzfeldt-Jakob disease		1			14		140
	Severe invasive streptococcal infections(TSLS)					19	1	110
	Acquired immunodeficiency syndrome (AIDS)	10	13	4	10	512	12	1,431
	Giardiasis					19	1	72
	Meningococcal meningitis					2		10
	Congenital rubella syndrome							1
	Syphilis	6	3	4	4	185	12	773
	Tetanus					5	2	115
	Vancomycin-resistant S. aureus infection							
	Vancomycin-resistant Enterococcus infection			2		15		79
	Rubella	1	1	1		44	3	293
	Measles	2	1		3	1,169	8	10,952

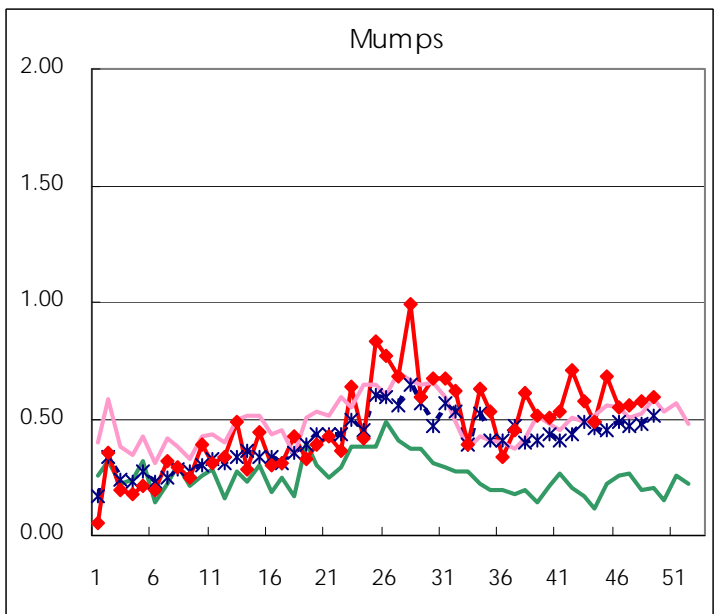
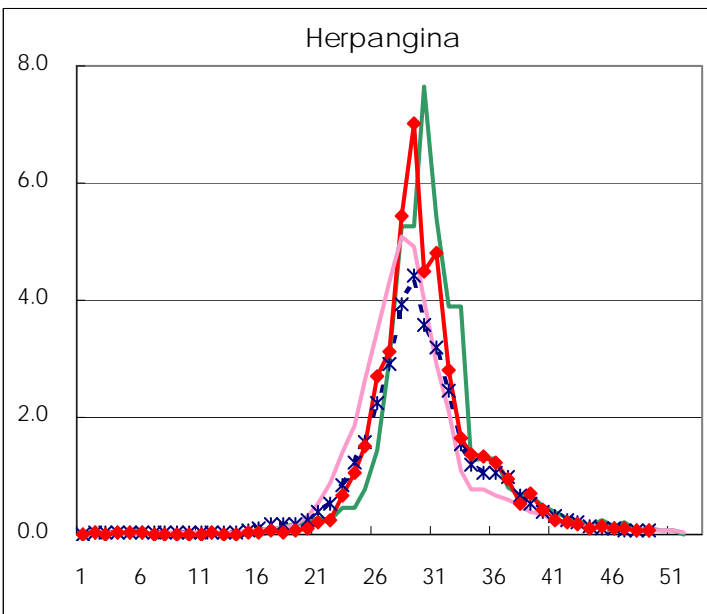
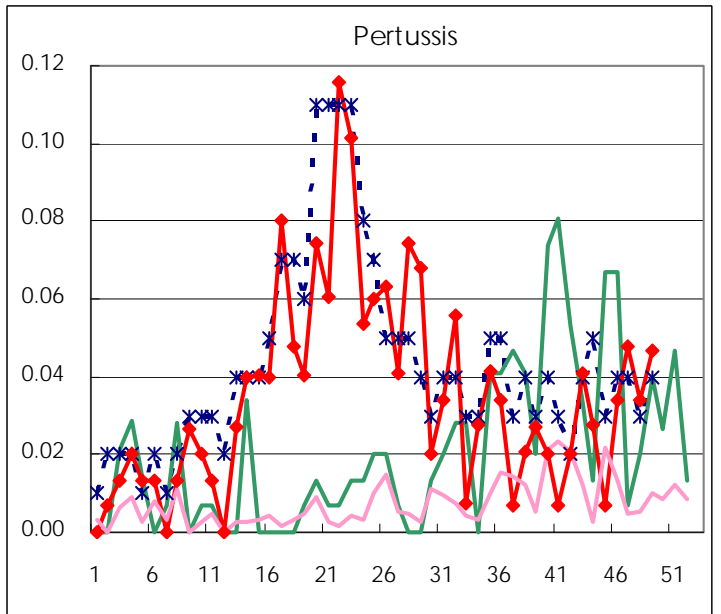
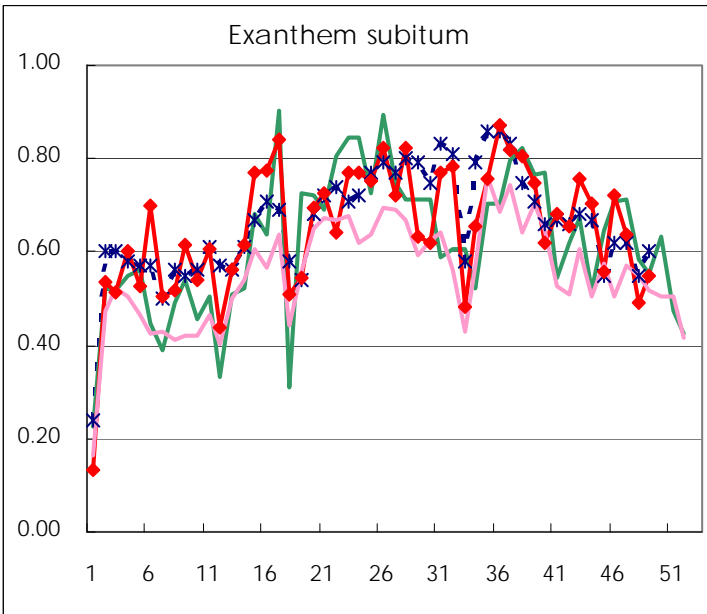
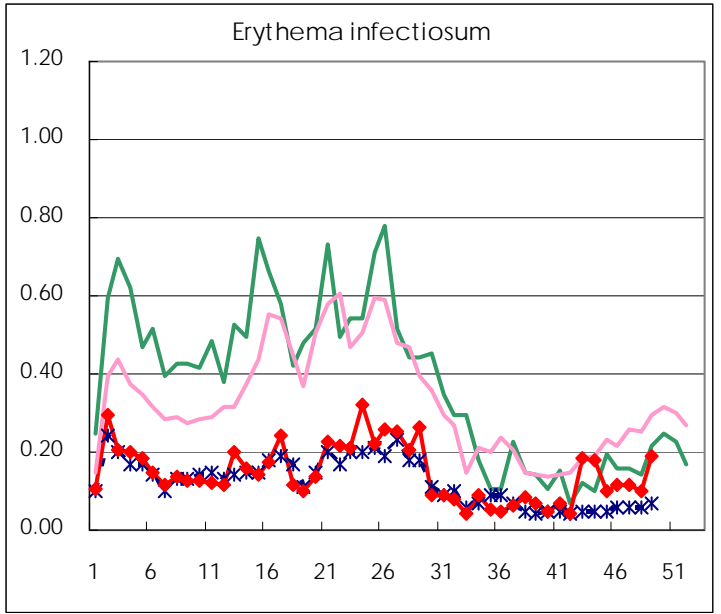
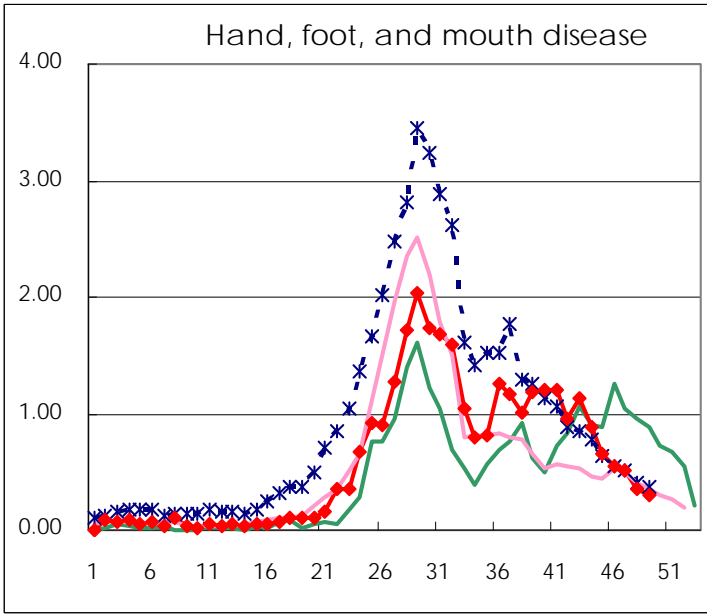
Number of patients with the diseases to be reported
by the designated clinics and hospitals

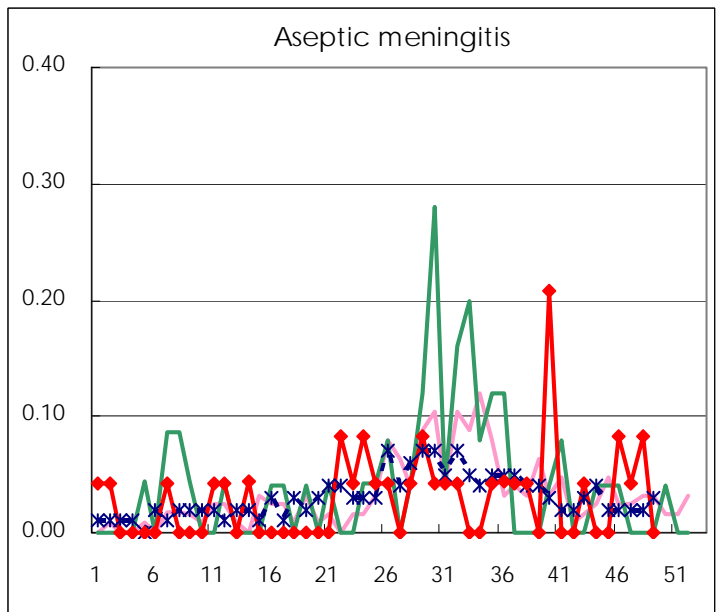
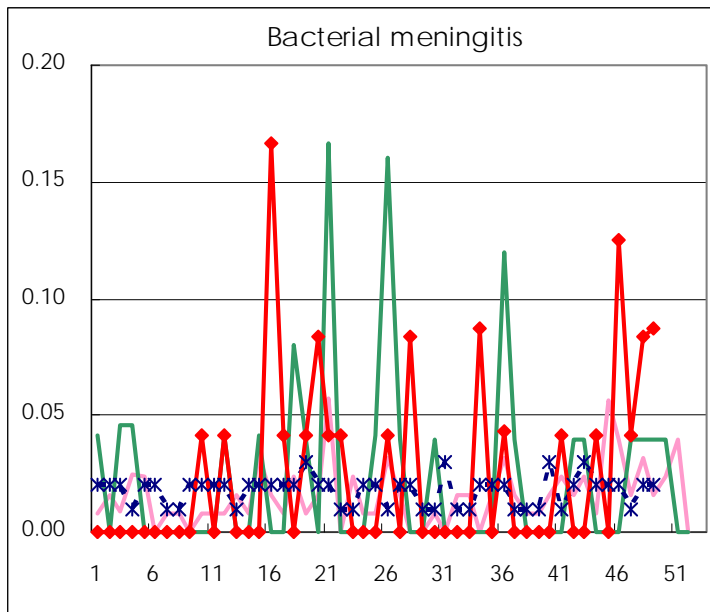
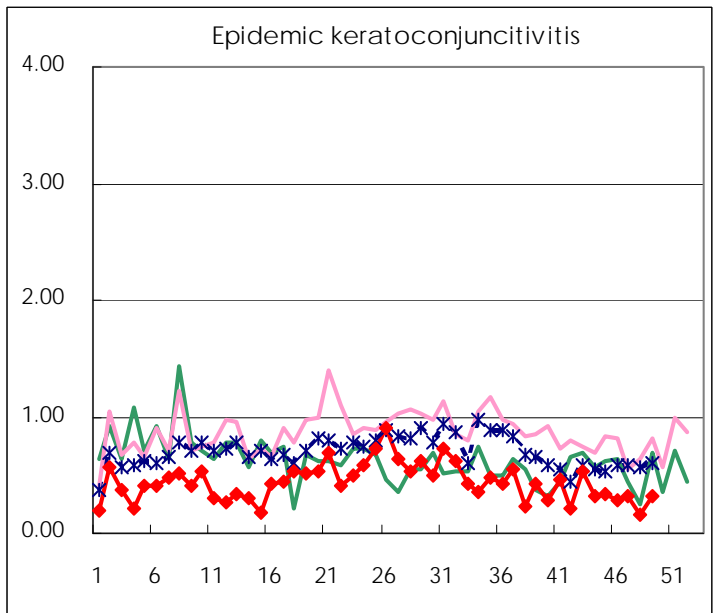
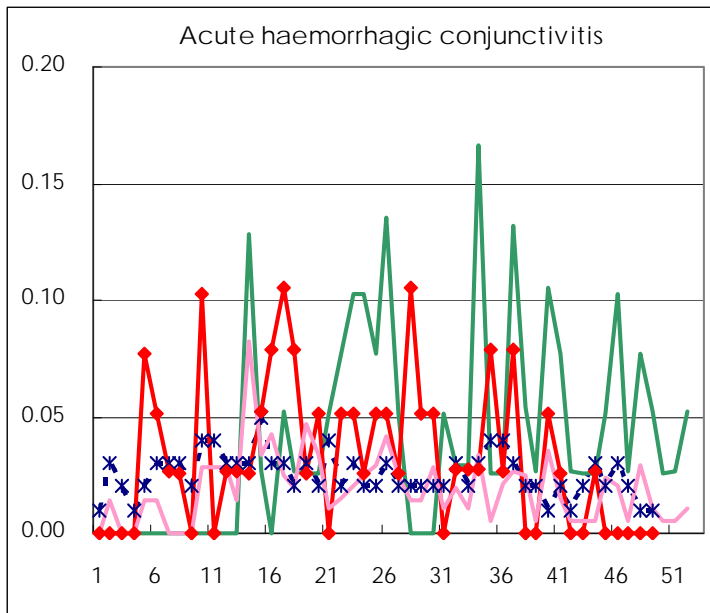
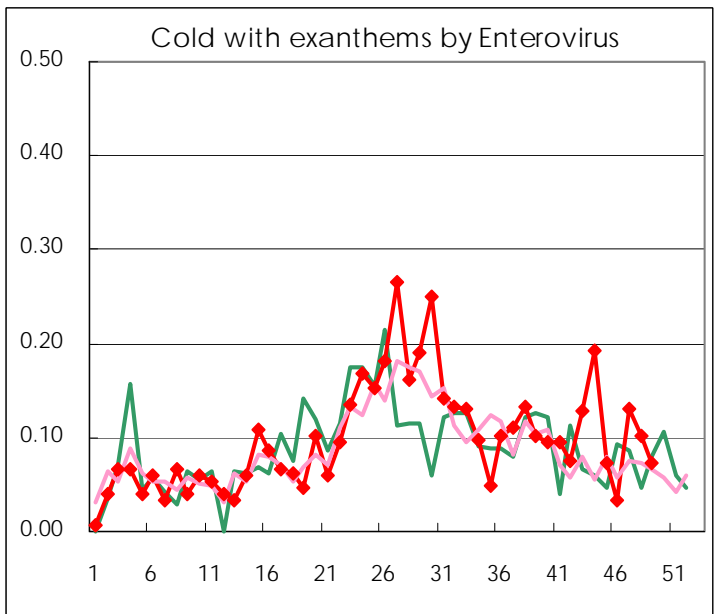
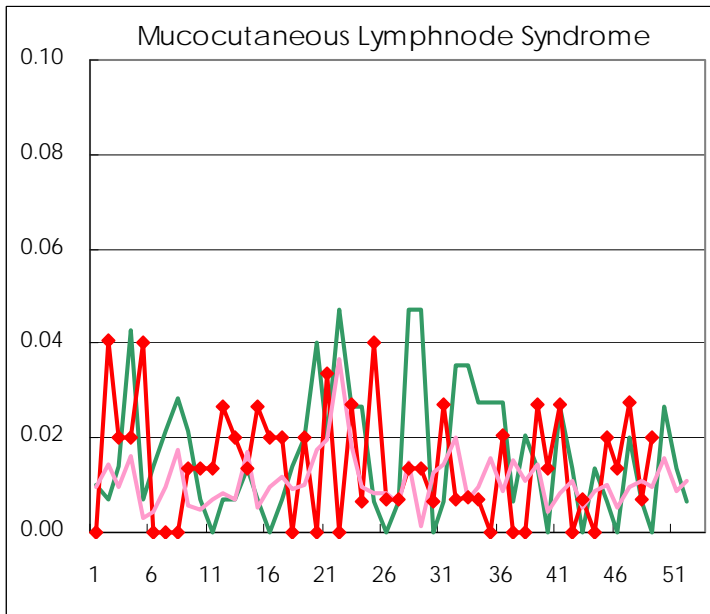
Diseases	2008				
	46th	47th	48th	49th	/sentinel
Respiratory syncytial virus infection	106	122	90	99	0.66
Pharyngoconjunctival fever	32	40	45	56	0.38
Group A streptococcal pharyngitis	284	278	228	335	2.25
Infectious gastroenteritis	1,209	1,637	1,592	2,292	15.38
Chickenpox	204	158	183	193	1.30
Hand, foot, and mouth disease	80	76	52	44	0.30
Erythema infectiosum	17	17	15	28	0.19
Exanthem subitum	107	93	72	82	0.55
Pertussis	5	7	5	7	0.05
Herpangina	15	13	12	13	0.09
Mumps	81	81	85	88	0.59
Cold with exanthems by Enterovirus	5	19	15	11	0.07
Mucocutaneous Lymphnode Syndrome	2	4	1	3	0.02
Influenza	77	150	184	478	1.67
Acute hemorrhagic conjunctivitis					
Epidemic keratoconjunctivitis	11	12	6	12	0.32
Bacterial meningitis	3	1	2	2	0.09
Aseptic meningitis	2	1	2		
Mycoplasma pneumonia	9	13	9	5	0.22
Chlamydial pneumonia (excluding psittacosis)			3	1	0.04

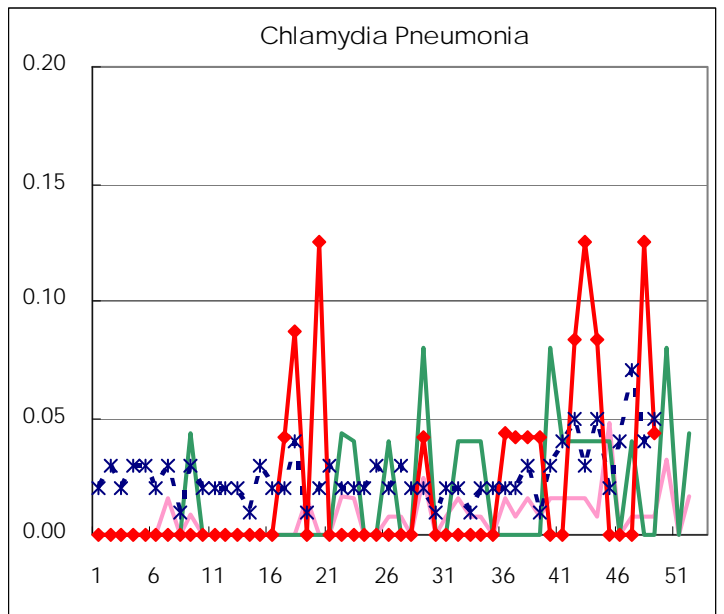
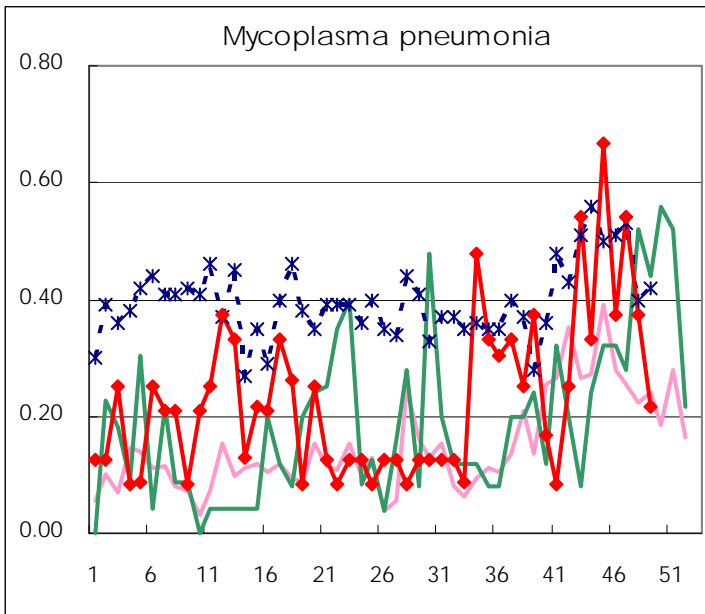
(Blank means 0.)

Disease Trend Graph (weekly reported cases per sentinel in comparison)









Number of sentinel facilities for weekly reporting

Types of sentinels	Number of sentinels	Sentinels having reported
Pediatric	150	149
Influenza	290	287
Ophthalmic	39	38
Specially-designated	24	23

Tokyo Metropolitan Government
Infectious Disease Surveillance Center