
INFECTIOUS DISEASES WEEKLY REPORT

TOKYO IDWR

Tokyo Metropolitan Infectious Disease Surveillance Center

18 December 2008 / Number 50

Surveillance System in Tokyo, Japan

The infectious diseases which all physicians must report

All physicians must report to health centers the incidence of the diseases which are shown at page one. Health centers electronically report the individual cases to Tokyo Metropolitan Infectious Disease Surveillance Center.

The infectious diseases required to be reported by the sentinels

The numbers of patients who visit the sentinel clinics or hospitals during a week are reported to health centers in Tokyo. And they electronically report the numbers to Tokyo Metropolitan Infectious Disease Surveillance Center. We have about 400 sentinel clinics and hospitals in Tokyo.

1st Week is early January and 52nd Week is end of December.

Tokyo Metropolitan Institute of Public Health
Epidemiological Information Office

TEL:81-3-3363-3213 FAX:81-3-5332-7365

e-mail:idsc@tokyo-eiken.go.jp

URL:idsc.tokyo-eiken.go.jp/

Number of patients with the diseases which all physicians must report

Category	Diseases	Tokyo				Japan		
		47th	48th	49th	50th	Cum 2008	50th	Cum 2008
I	Ebola hemorrhagic fever							
	Crimean-Congo hemorrhagic fever							
	Smallpox							
	South American hemorrhagic fever							
	Plague							
	Marburg disease							
	Lassa fever							
II	Acute poliomyelitis							1
	Tuberculosis	90	62	61	59	4120	315	26532
	Diphtheria							
	Severe Acute Respiratory Syndrome(SARS)							
	Avian influenza H5N1							
III	Cholera					6		45
	Shigellosis	1	1	1	2	63	9	307
	Enterohemorrhagic Escherichia coli infection	4	8	3	3	404	20	4,254
	Typhoid fever			1		13		55
	Paratyphoid fever			1		6		26
IV	Hepatitis E					7		41
	West Nile fever							
	Hepatitis A	1	1	1		30	1	167
	Echinococcosis							17
	Yellow fever							
	Psittacosis							9
	Omsk hemorrhagic fever							
	Relapsing fever							
	Kyasanur forest disease							
	Q fever					1		3
	Rabies							
	Coccidioidomycosis							2
	Monkeypox							
	Hemorrhagic fever with renal syndrome							
	Western equine encephalitis							
	Tick-borne encephalitis							
	Anthrax							
	Scrub typhus(Tsutsugamushi disease)	1			5	15	27	382
	Dengue fever			2		32	2	101
	Eastern equine encephalitis							
	Avian influenza (excluding H5N1)							
	Nipah virus infection							
	Japanese spotted fever						2	124
	Japanese encephalitis							3
	Epidemic typhus							
	Hantavirus pulmonary syndrome							
	Herpes B virus infection							
	Glanders							
	Brucellosis							4
	Venezuelan equine encephalitis							
	Hendra virus infection							
	Botulism							2
Malaria					22	1	53	
Tularemia							5	
Lyme disease						1	5	
Lyssavirus infection(excluding rabies)								
Rift valley fever								
Melioidosis								
Legionellosis	1		1	2	77	14	849	
Leptospirosis					4		41	
Rocky mountain spotted fever								

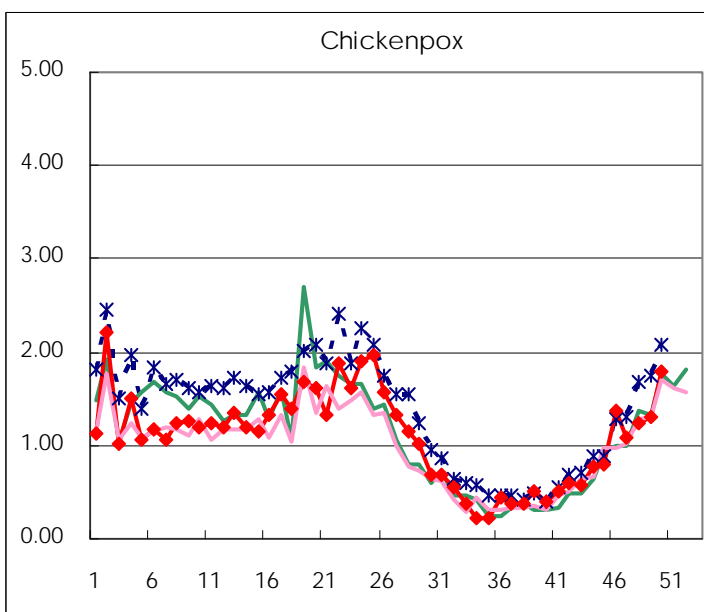
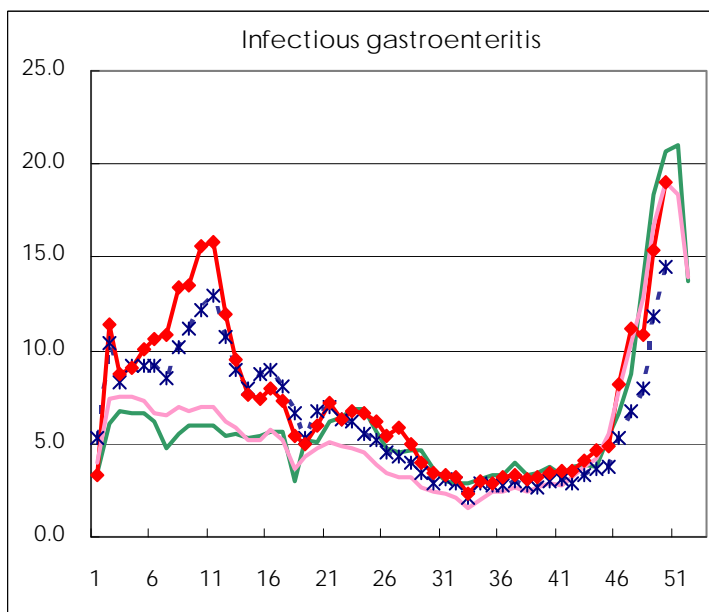
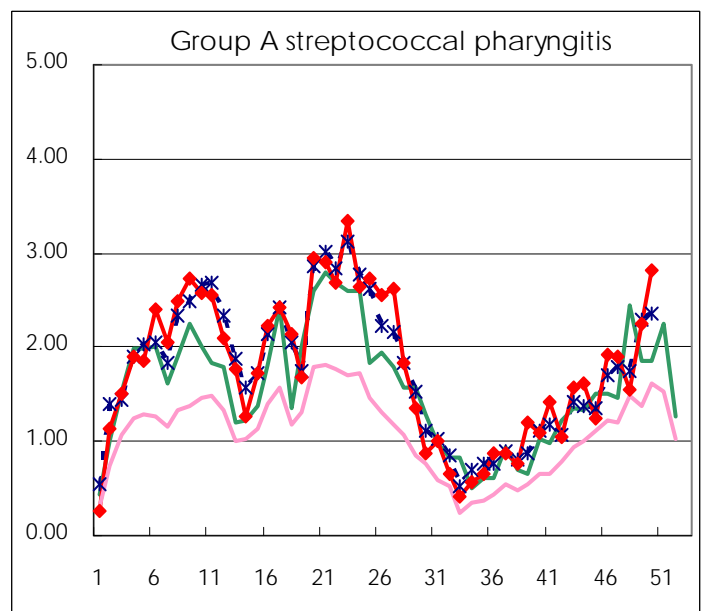
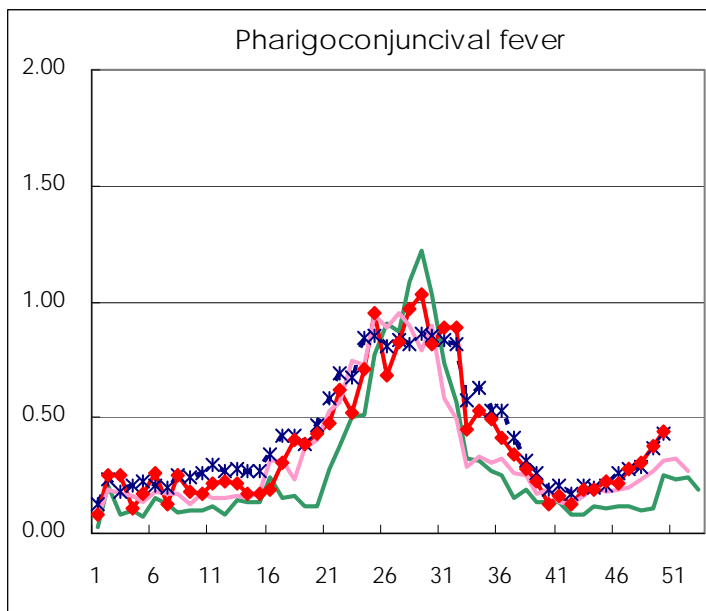
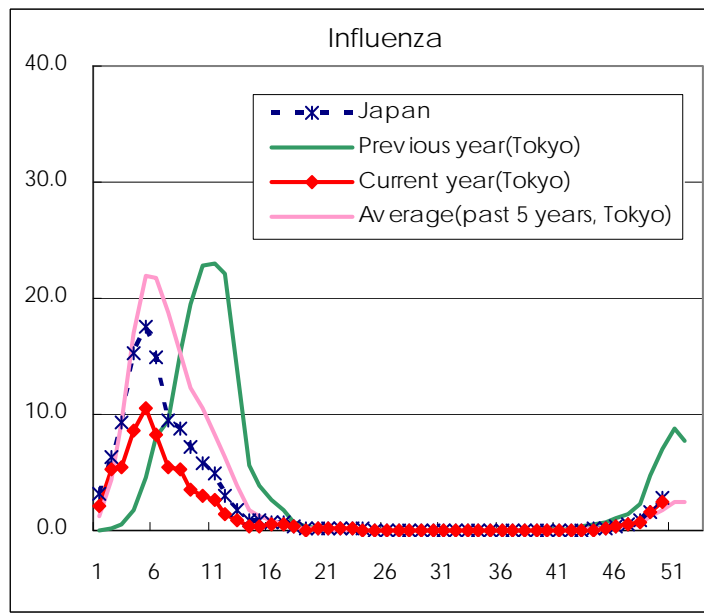
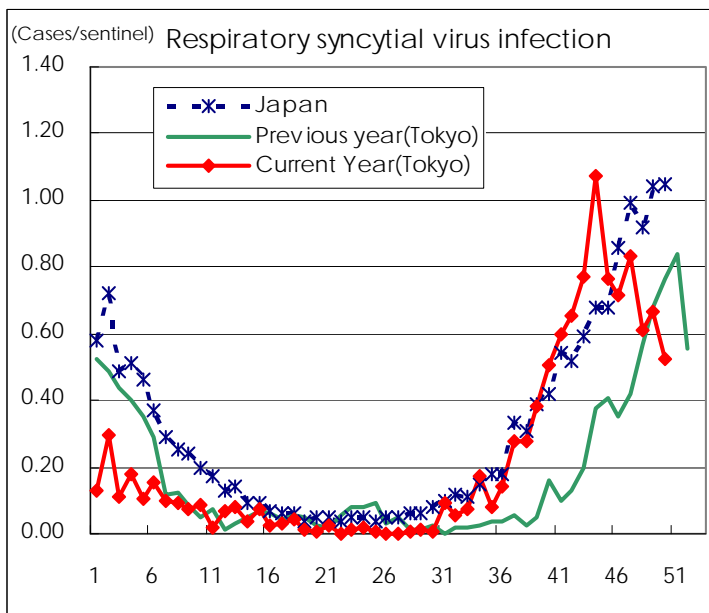
Category	Diseases	Tokyo					Japan	
		47th	48th	49th	50th	Cum 2008	50th	Cum 2008
V	Amebiasis	3	5	3	2	184	14	819
	Viral hepatitis(excluding hepatitis A and E)		1			30	5	226
	Acute encephalitis(excluding JE and WNE)			1		11	1	174
	Cryptosporidiosis					4		9
	Creutzfeldt-Jakob disease	1				14	2	141
	Severe invasive streptococcal infections(TSLS)					19		110
	Acquired immunodeficiency syndrome (AIDS)	13	4	10	18	530	21	1,468
	Giardiasis					19	1	73
	Meningococcal meningitis					2		10
	Congenital rubella syndrome							
	Syphilis	3	4	4	11	196	12	797
	Tetanus					5		117
	Vancomycin-resistant S. aureus infection							
	Vancomycin-resistant Enterococcus infection		2			15	1	80
	Rubella	1	1			44	2	297
	Measles	1		3	2	1,171	13	10,969

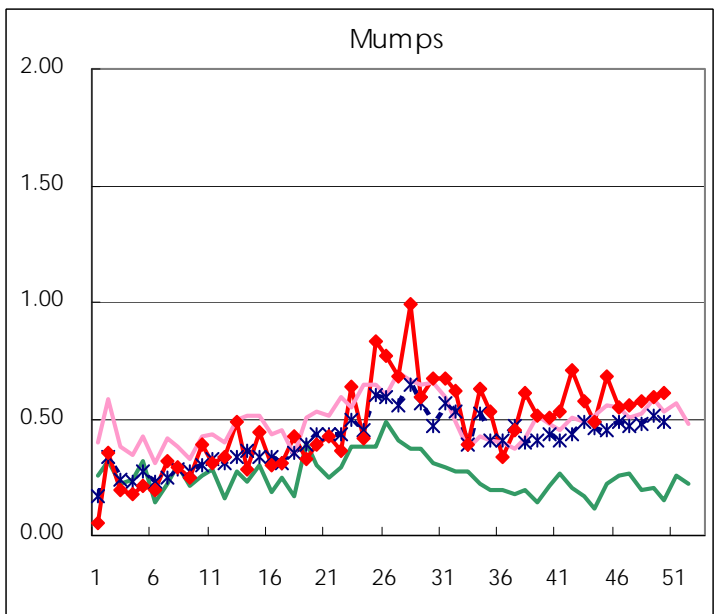
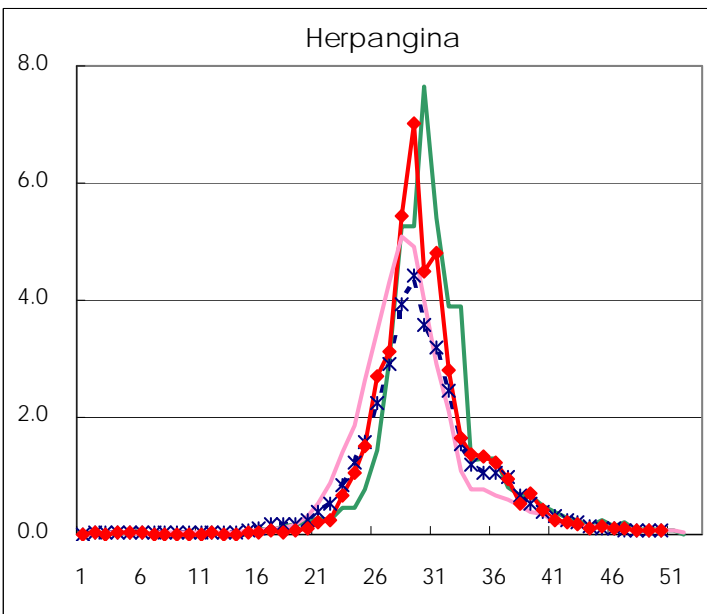
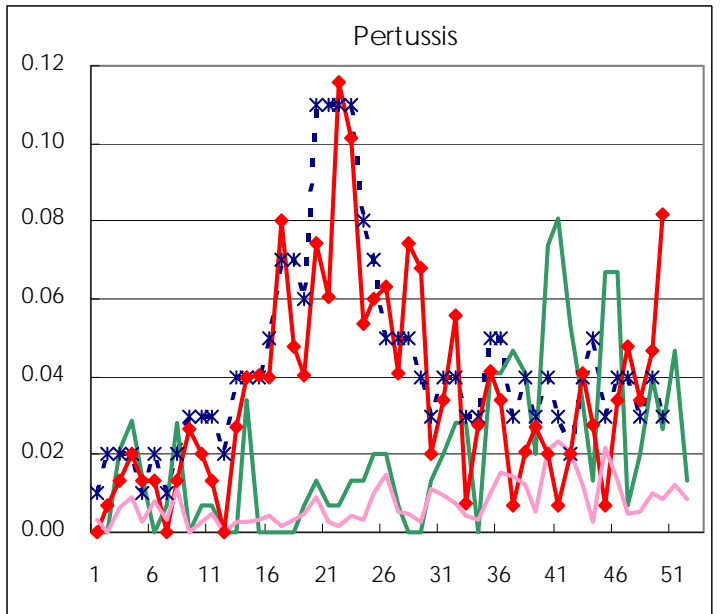
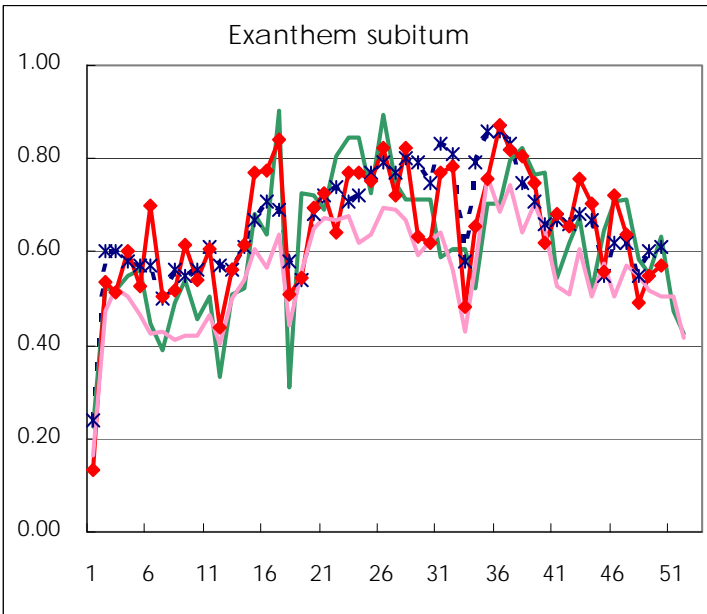
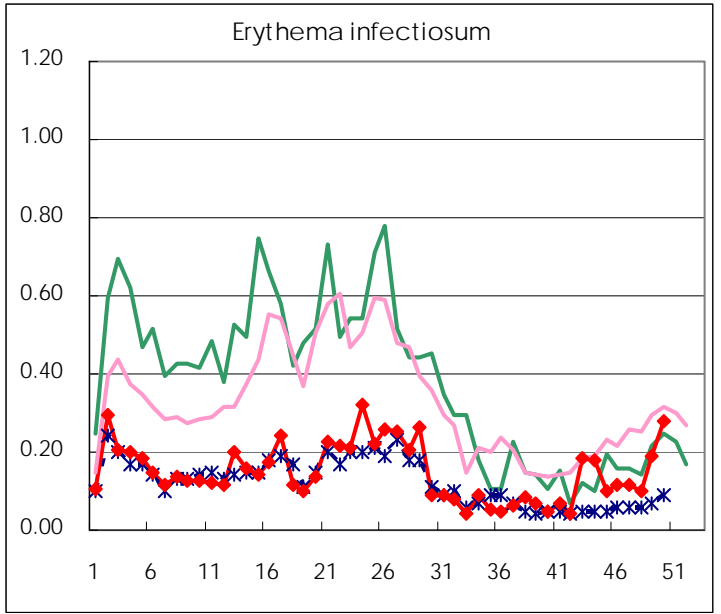
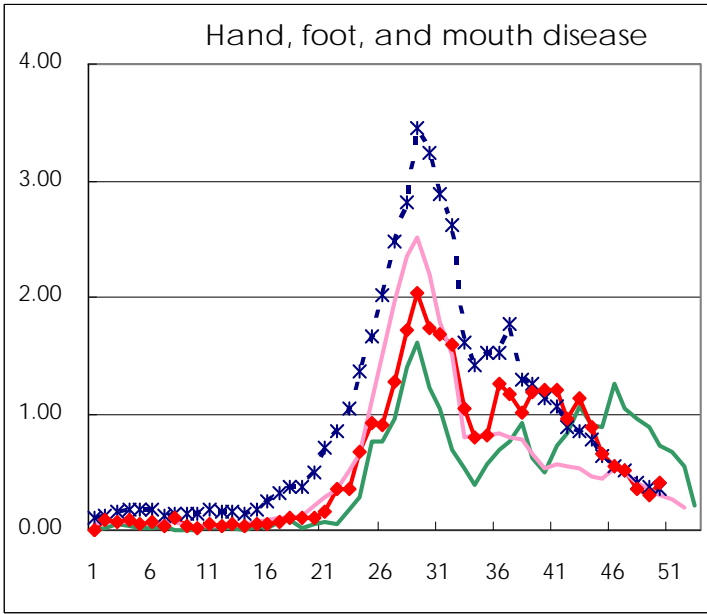
Number of patients with the diseases to be reported
by the designated clinics and hospitals

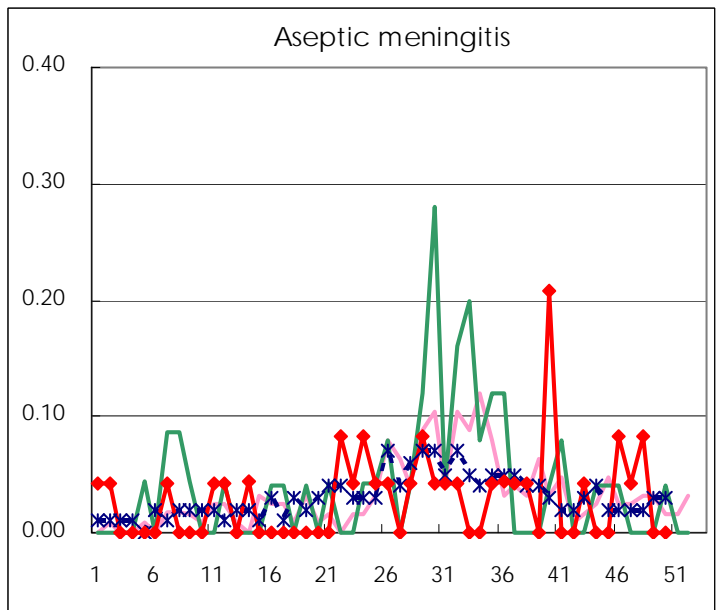
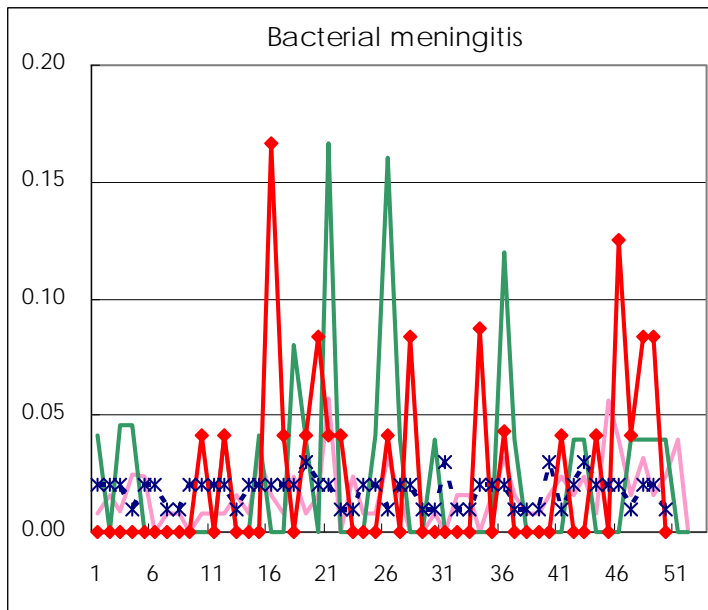
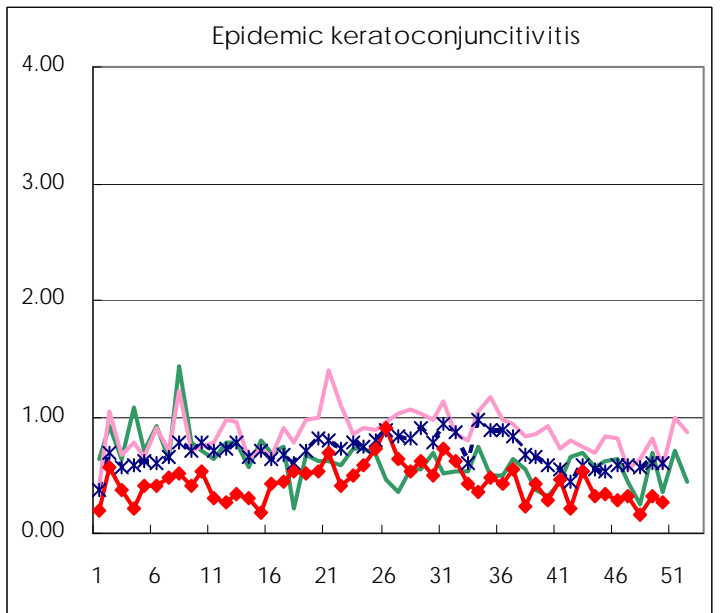
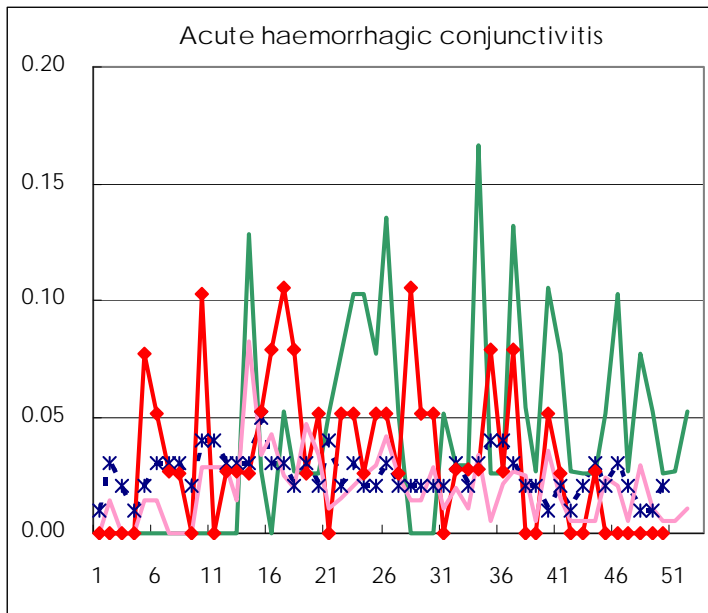
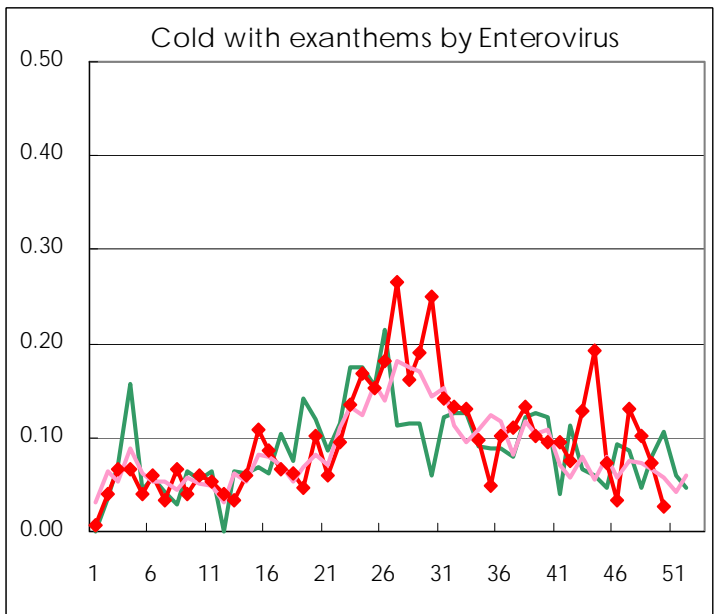
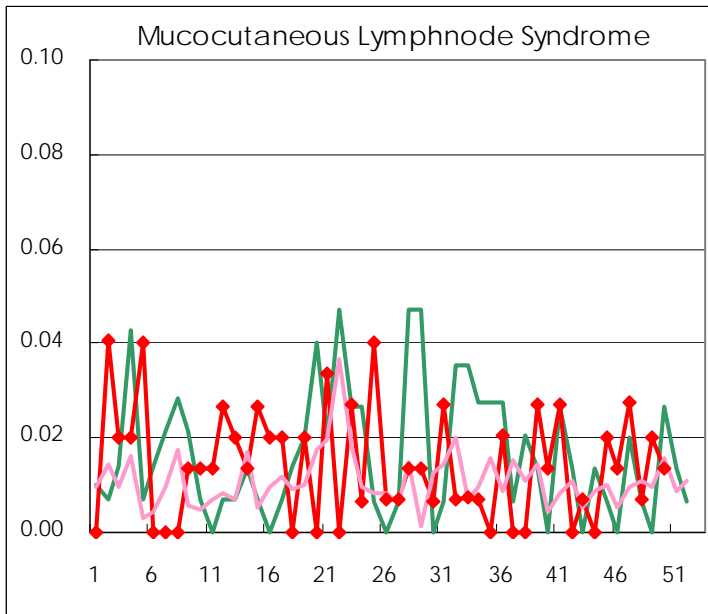
Diseases	2008				
	47th	48th	49th	50th	/sentinel
Respiratory syncytial virus infection	122	90	99	77	0.52
Pharyngoconjunctival fever	40	45	56	65	0.44
Group A streptococcal pharyngitis	278	228	335	415	2.82
Infectious gastroenteritis	1,637	1,592	2,292	2,800	19.05
Chickenpox	158	183	193	264	1.80
Hand, foot, and mouth disease	76	52	44	61	0.41
Erythema infectiosum	17	15	28	41	0.28
Exanthem subitum	93	72	82	84	0.57
Pertussis	7	5	7	12	0.08
Herpangina	13	12	13	9	0.06
Mumps	81	85	88	90	0.61
Cold with exanthems by Enterovirus	19	15	11	4	0.03
Mucocutaneous Lymphnode Syndrome	4	1	3	2	0.01
Influenza	150	184	478	673	2.40
Acute hemorrhagic conjunctivitis					
Epidemic keratoconjunctivitis	12	6	12	10	0.26
Bacterial meningitis	1	2	2		
Aseptic meningitis	1	2			
Mycoplasma pneumonia	13	9	5	10	0.45
Chlamydial pneumonia (excluding psittacosis)		3	1		

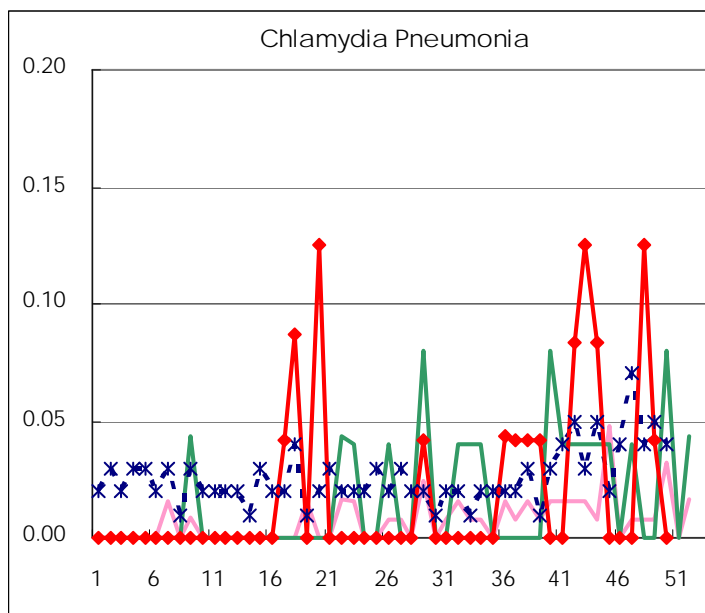
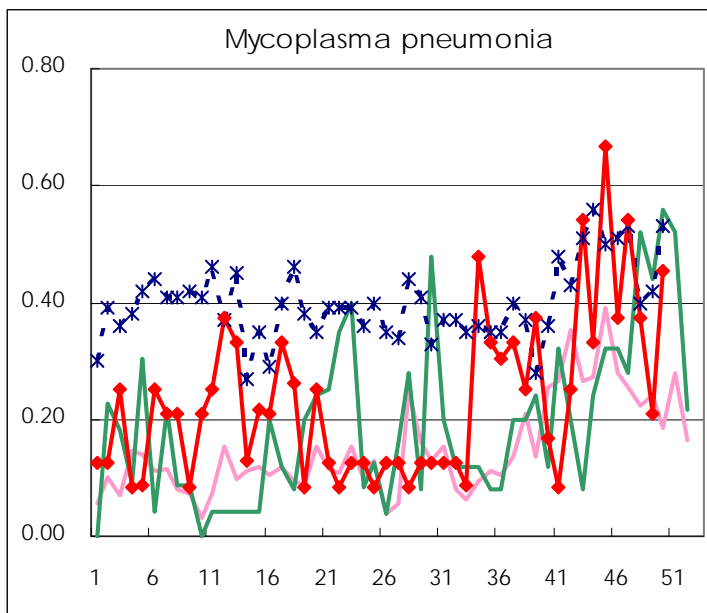
(Blank means 0.)

Disease Trend Graph (weekly reported cases per sentinel in comparison)









Number of sentinel facilities
for weekly reporting

Types of sentinels	Number of sentinels	Sentinels having reported
Pediatric	150	147
Influenza	290	280
Ophthalmic	39	38
Specially-designated	24	22

Tokyo Metropolitan Government
Infectious Disease Surveillance Center