

---

INFECTIOUS DISEASES WEEKLY REPORT

# TOKYO IDWR

Tokyo Metropolitan Infectious Disease Surveillance Center

## 25 December 2008 / Number 51

### Surveillance System in Tokyo, Japan

The infectious diseases which all physicians must report

All physicians must report to health centers the incidence of the diseases which are shown at page one. Health centers electronically report the individual cases to Tokyo Metropolitan Infectious Disease Surveillance Center.

The infectious diseases required to be reported by the sentinels

The numbers of patients who visit the sentinel clinics or hospitals during a week are reported to health centers in Tokyo. And they electronically report the numbers to Tokyo Metropolitan Infectious Disease Surveillance Center. We have about 400 sentinel clinics and hospitals in Tokyo.

1st Week is early January and 52nd Week is end of December.

Tokyo Metropolitan Institute of Public Health  
Epidemiological Information Office

TEL:81-3-3363-3213 FAX:81-3-5332-7365

e-mail:[idsc@tokyo-eiken.go.jp](mailto:idsc@tokyo-eiken.go.jp)

URL:[idsc.tokyo-eiken.go.jp/](http://idsc.tokyo-eiken.go.jp/)

---

Number of patients with the diseases which all physicians must report

Category	Diseases	Tokyo				Japan		
		48th	49th	50th	51st	Cum 2008	51st	Cum 2008
I	Ebola hemorrhagic fever							
	Crimean-Congo hemorrhagic fever							
	Smallpox							
	South American hemorrhagic fever							
	Plague							
	Marburg disease							
	Lassa fever							
II	Acute poliomyelitis							2
	Tuberculosis	64	65	73	55	4202	292	27104
	Diphtheria							
	Severe Acute Respiratory Syndrome(SARS)							
	Avian influenza H5N1							
III	Cholera					6		45
	Shigellosis	1	1	2	1	64	6	314
	Enterohemorrhagic Escherichia coli infection	8	3	3	2	406	28	4,292
	Typhoid fever		1			13	1	56
	Paratyphoid fever		1			6	1	27
IV	Hepatitis E					7	1	42
	West Nile fever							
	Hepatitis A	1	1			30	1	169
	Echinococcosis							12
	Yellow fever							
	Psittacosis							9
	Omsk hemorrhagic fever							
	Relapsing fever							
	Kyasanur forest disease							
	Q fever					1		3
	Rabies							
	Coccidioidomycosis							2
	Monkeypox							
	Hemorrhagic fever with renal syndrome							
	Western equine encephalitis							
	Tick-borne encephalitis							
	Anthrax							
	Scrub typhus(Tsutsugamushi disease)			5	1	16	22	413
	Dengue fever		2			32	1	102
	Eastern equine encephalitis							
	Avian influenza (excluding H5N1)							
	Nipah virus infection							
	Japanese spotted fever							132
	Japanese encephalitis							3
	Epidemic typhus							
	Hantavirus pulmonary syndrome							
	Herpes B virus infection							
	Glanders							
	Brucellosis							4
	Venezuelan equine encephalitis							
Hendra virus infection								
Botulism							2	
Malaria				1	23	1	54	
Tularemia							5	
Lyme disease							5	
Lyssavirus infection(excluding rabies)								
Rift valley fever								
Melioidosis								
Legionellosis		1	2	2	79	7	862	
Leptospirosis					4	1	42	
Rocky mountain spotted fever								

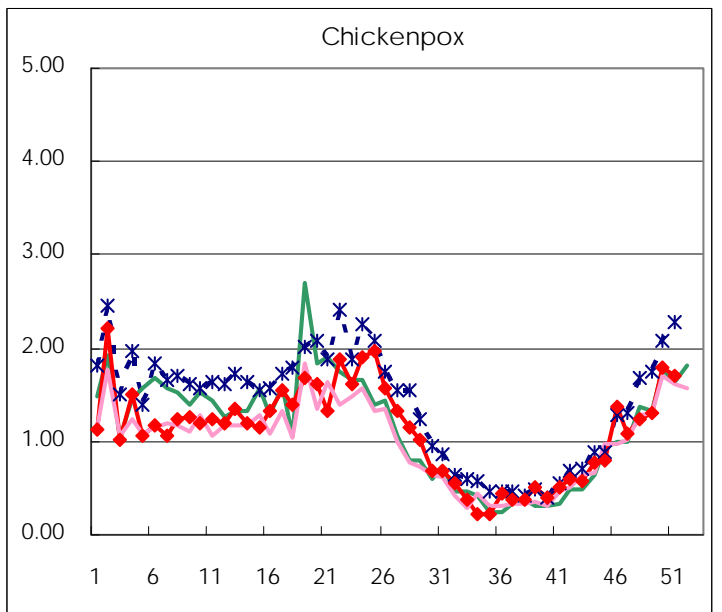
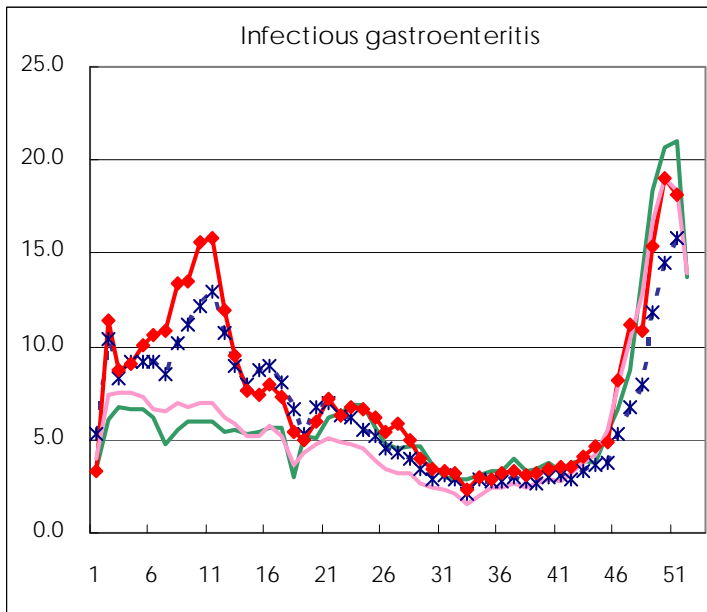
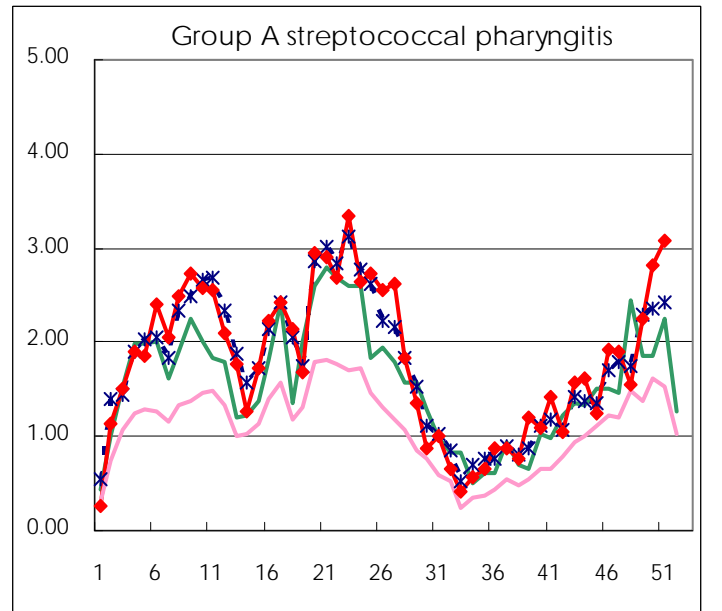
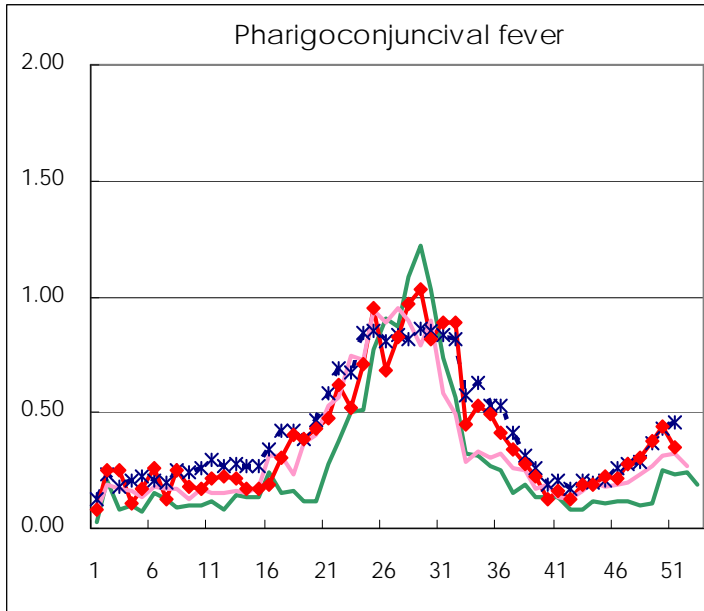
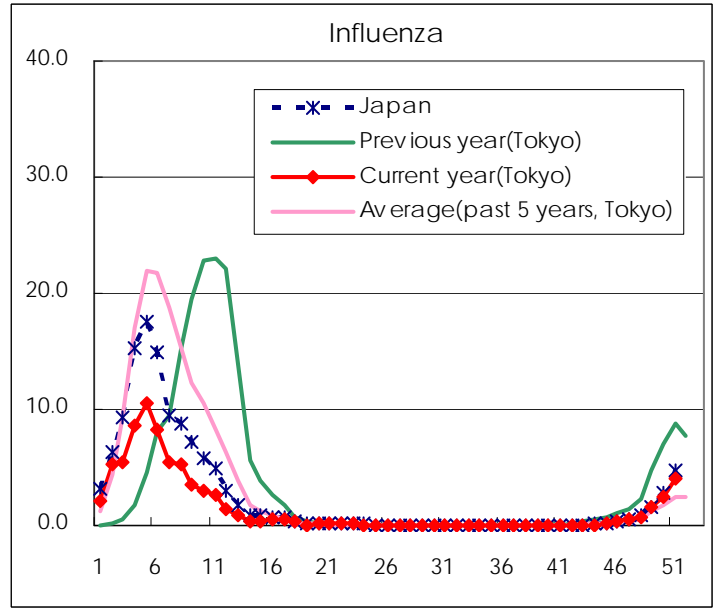
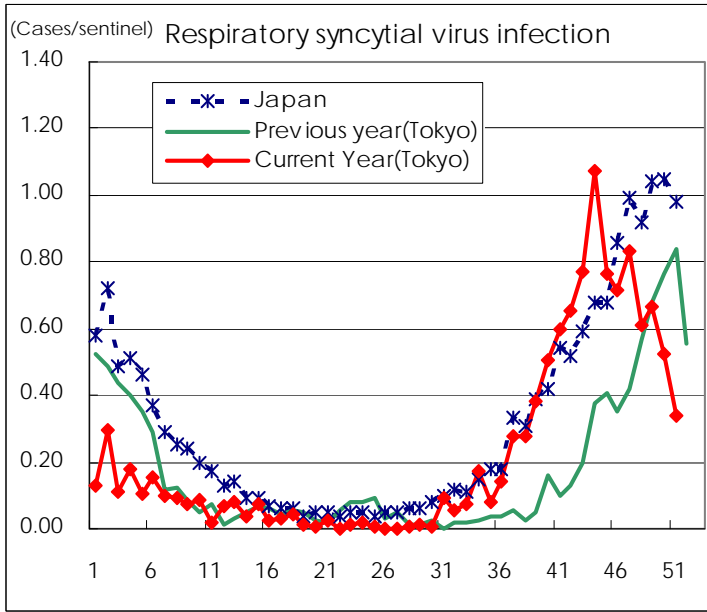
Category	Diseases	Tokyo					Japan	
		48th	49th	50th	51st	Cum 2008	51st	Cum 2008
V	Amebiasis	5	3	2	2	186	12	839
	Viral hepatitis(excluding hepatitis A and E)	1				30	2	229
	Acute encephalitis(excluding JE and WNE)		1			11		178
	Cryptosporidiosis					4		9
	Creutzfeldt-Jakob disease				1	15	1	146
	Severe invasive streptococcal infections(TSLS)					19		110
	Acquired immunodeficiency syndrome (AIDS)	4	10	18	11	541	18	1,479
	Giardiasis				1	20	1	74
	Meningococcal meningitis					2		10
	Congenital rubella syndrome							
	Syphilis	4	4	11	5	201	5	808
	Tetanus					5		118
	Vancomycin-resistant S. aureus infection							
	Vancomycin-resistant Enterococcus infection	2				15	1	79
	Rubella	1				44	2	299
	Measles		3	2	3	1,174	12	10,986

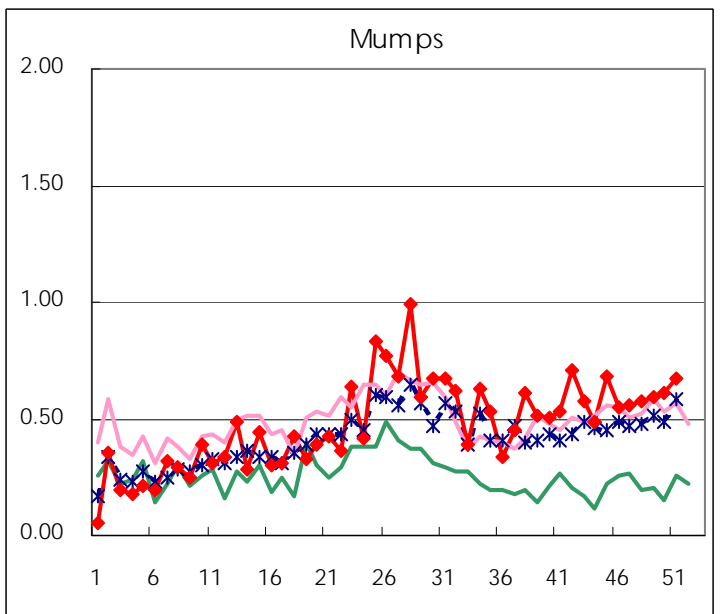
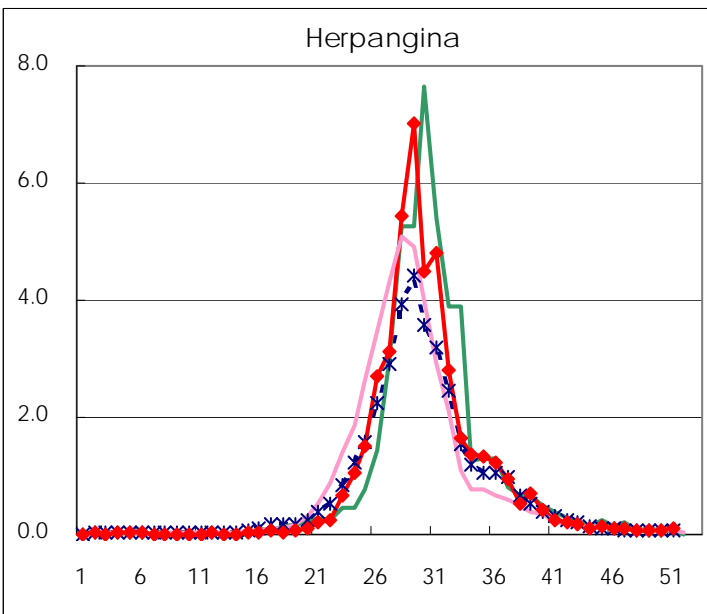
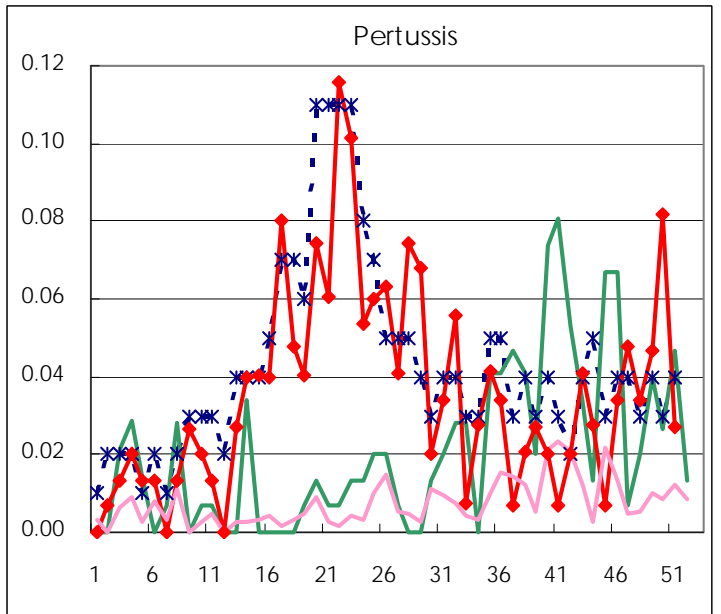
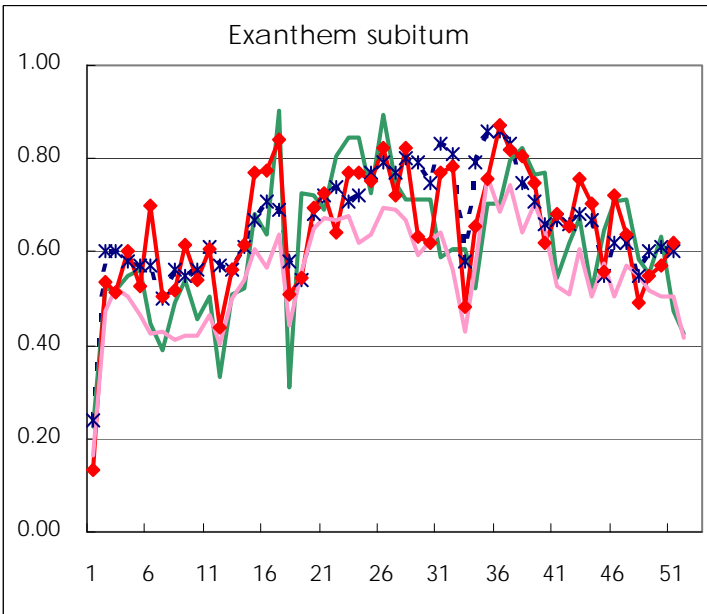
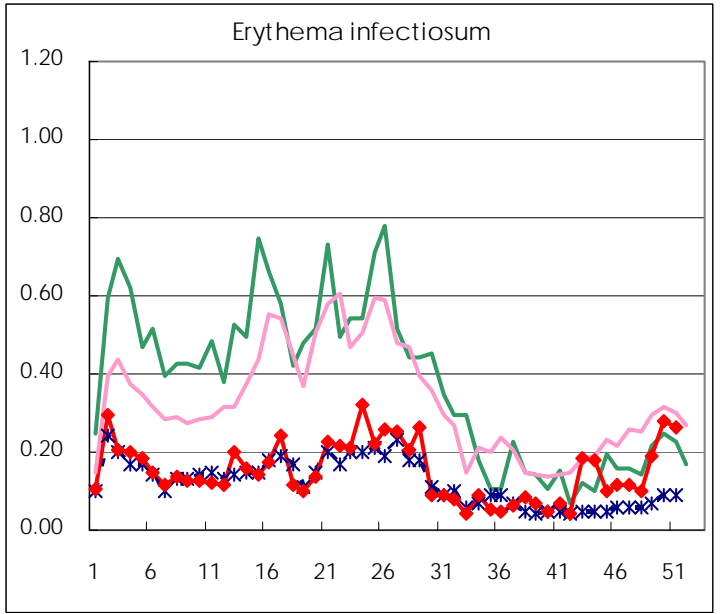
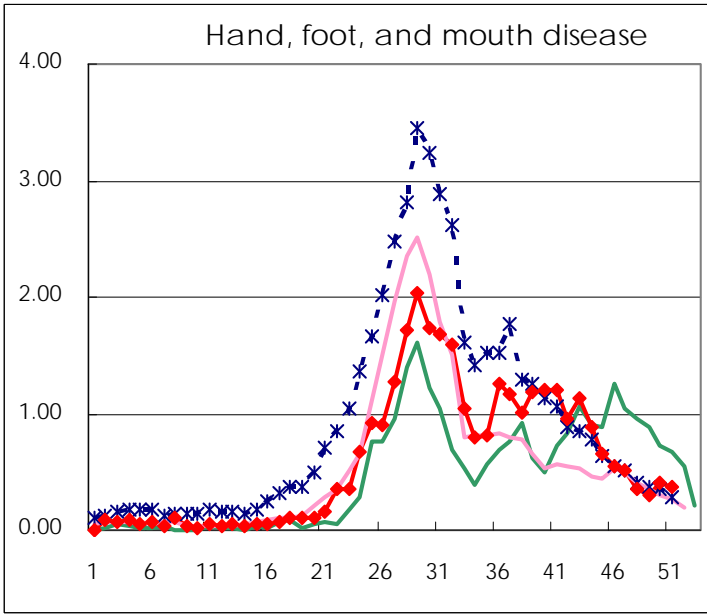
Number of patients with the diseases to be reported  
by the designated clinics and hospitals

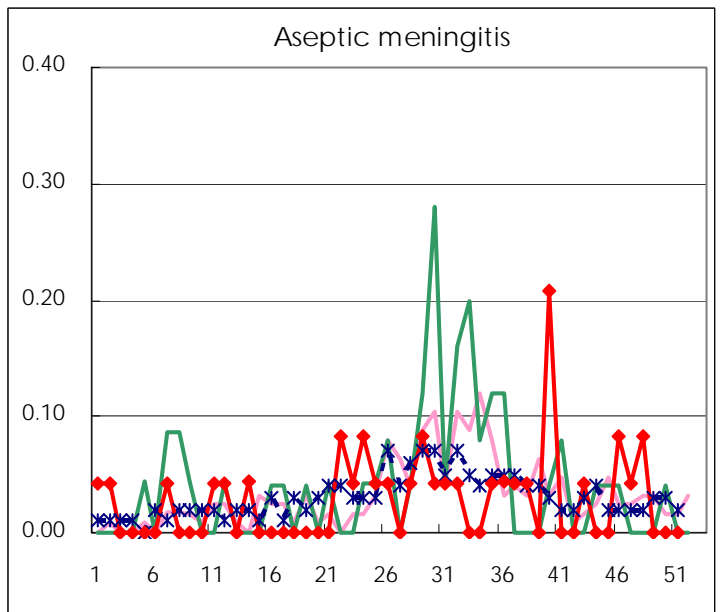
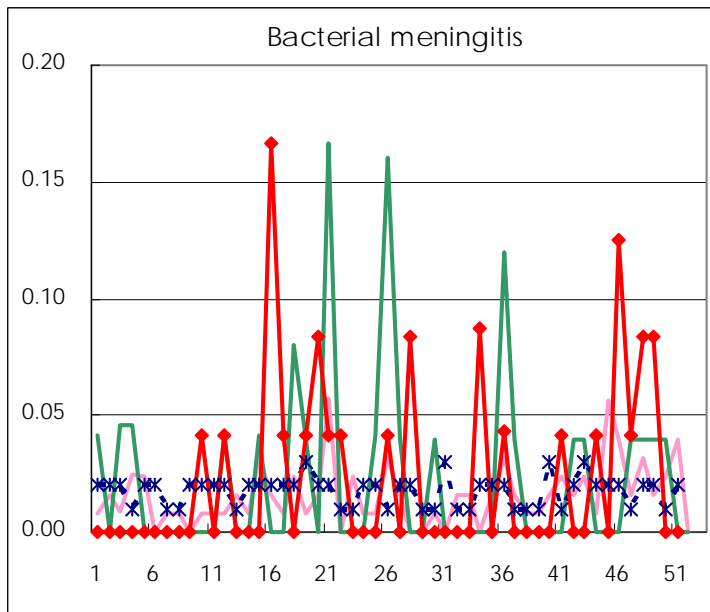
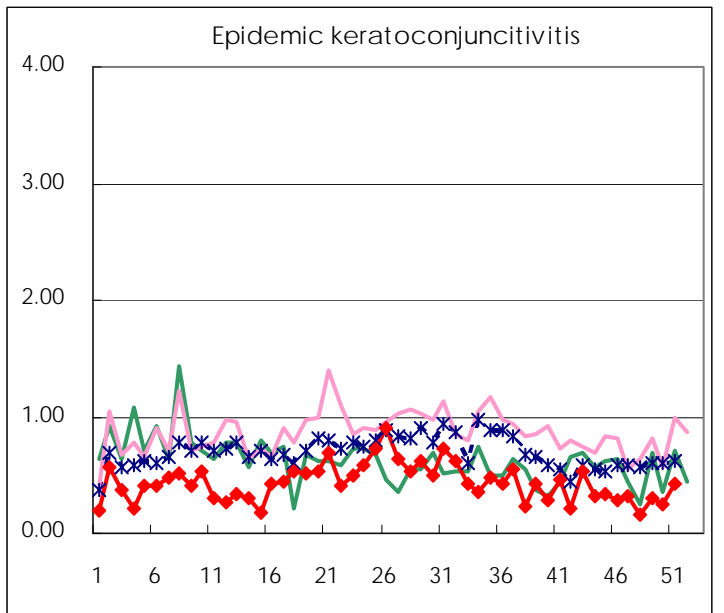
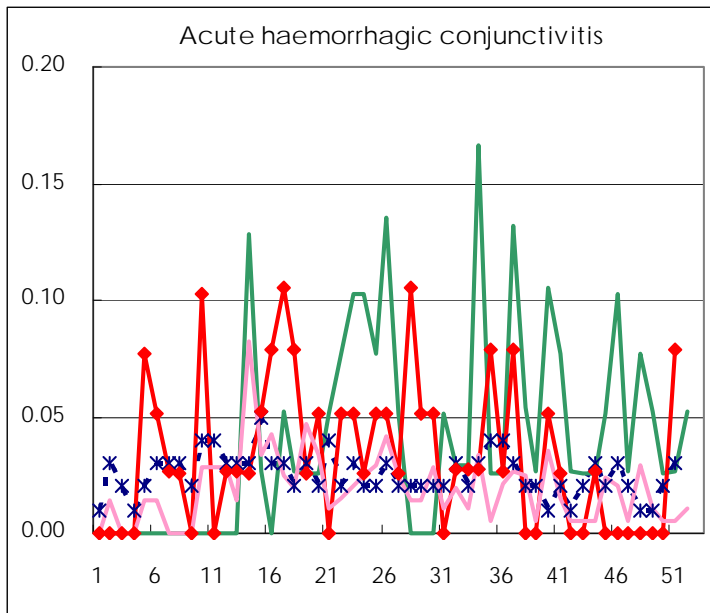
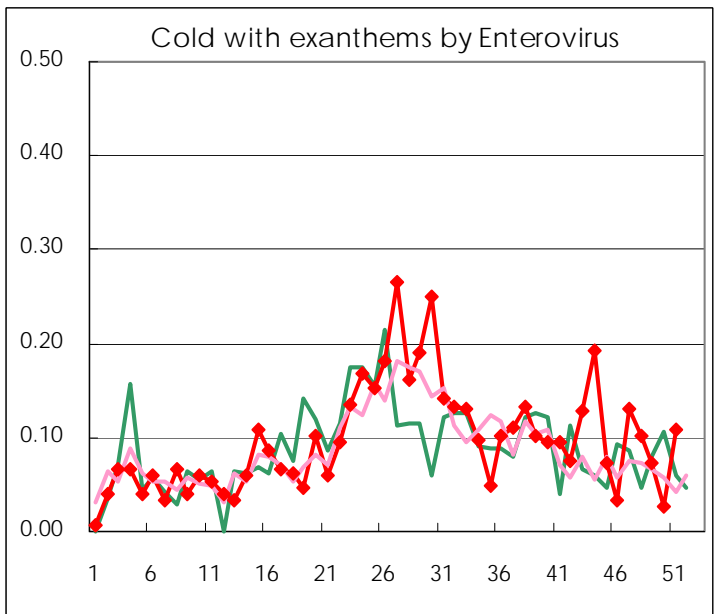
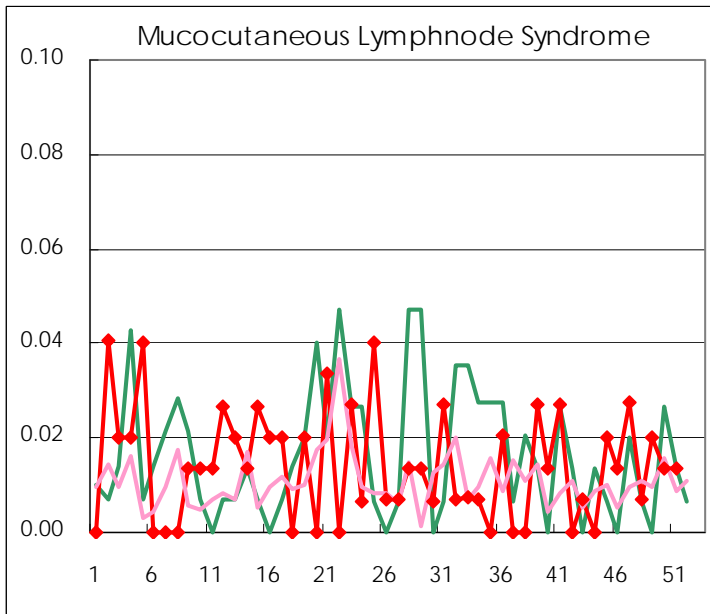
Diseases	2008				
	48th	49th	50th	51st	/sentinel
Respiratory syncytial virus infection	90	99	77	50	0.34
Pharyngoconjunctival fever	45	56	65	52	0.35
Group A streptococcal pharyngitis	228	335	415	457	3.09
Infectious gastroenteritis	1,592	2,292	2,800	2,678	18.09
Chickenpox	183	193	264	252	1.70
Hand, foot, and mouth disease	52	44	61	56	0.38
Erythema infectiosum	15	28	41	39	0.26
Exanthem subitum	72	82	84	92	0.62
Pertussis	5	7	12	4	0.03
Herpangina	12	13	9	13	0.09
Mumps	85	88	90	100	0.68
Cold with exanthems by Enterovirus	15	11	4	16	0.11
Mucocutaneous Lymphnode Syndrome	1	3	2	2	0.01
Influenza	184	478	674	1,134	3.99
Acute hemorrhagic conjunctivitis				3	0.08
Epidemic keratoconjunctivitis	6	12	10	16	0.42
Bacterial meningitis	2	2			
Aseptic meningitis	2				
Mycoplasma pneumonia	9	5	10	8	0.36
Chlamydial pneumonia (excluding psittacosis)	3	1			

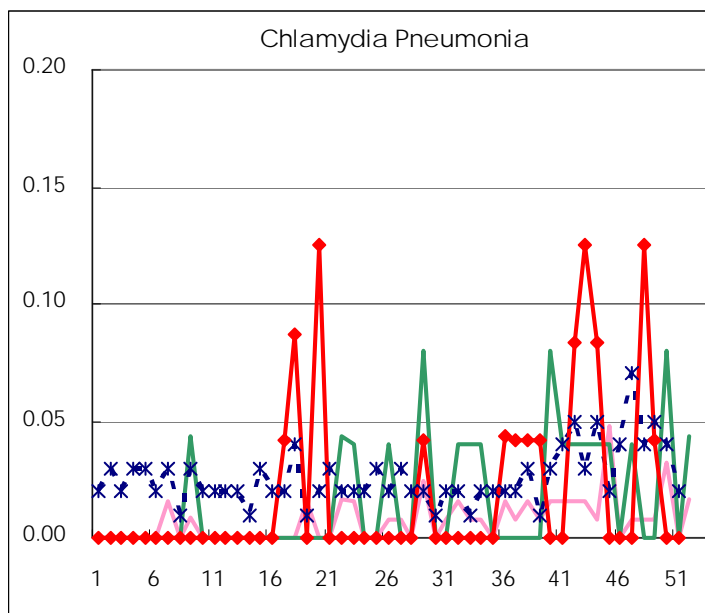
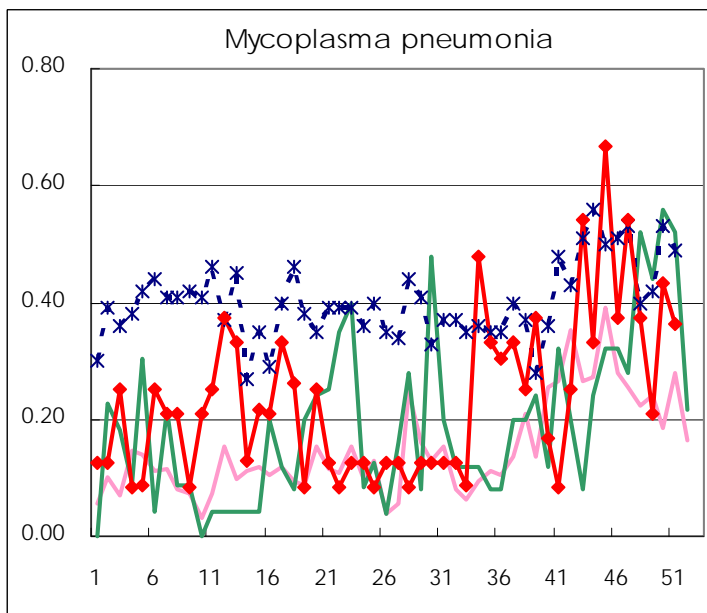
( Blank means 0. )

# Disease Trend Graph (weekly reported cases per sentinel in comparison)









Number of sentinel facilities  
for weekly reporting

Types of sentinels	Number of sentinels	Sentinels having reported
Pediatric	150	148
Influenza	290	284
Ophthalmic	39	37
Specially-designated	24	22

Tokyo Metropolitan Government  
Infectious Disease Surveillance Center