
INFECTIOUS DISEASES WEEKLY REPORT

TOKYO IDWR

Tokyo Metropolitan Infectious Disease Surveillance Center

22 January 2009 / Number 3

Surveillance System in Tokyo, Japan

The infectious diseases which all physicians must report

All physicians must report to health centers the incidence of the diseases which are shown at page one. Health centers electronically report the individual cases to Tokyo Metropolitan Infectious Disease Surveillance Center.

The infectious diseases required to be reported by the sentinels

The numbers of patients who visit the sentinel clinics or hospitals during a week are reported to health centers in Tokyo. And they electronically report the numbers to Tokyo Metropolitan Infectious Disease Surveillance Center. We have about 400 sentinel clinics and hospitals in Tokyo.

1st Week is early January and 52nd Week is end of December.

Tokyo Metropolitan Institute of Public Health
Epidemiological Information Office

TEL:81-3-3363-3213 FAX:81-3-5332-7365

e-mail:idsc@tokyo-eiken.go.jp

URL:idsc.tokyo-eiken.go.jp/

Number of patients with the diseases which all physicians must report

Category	Diseases	Tokyo				Cum 2009	Japan	
		52nd	1st	2nd	3rd		3rd	Cum 2009
I	Ebola hemorrhagic fever							
	Crimean-Congo hemorrhagic fever							
	Smallpox							
	South American hemorrhagic fever							
	Plague							
	Marburg disease							
	Lassa fever							
II	Acute poliomyelitis							
	Tuberculosis	71	7	71	36	114	221	679
	Diphtheria							
	Severe Acute Respiratory Syndrome(SARS)							
Avian influenza H5N1								
III	Cholera							
	Shigellosis				2	2	4	7
	Enterohemorrhagic Escherichia coli infection	3		1	1	2	16	33
	Typhoid fever							1
	Paratyphoid fever	1						
IV	Hepatitis E							1
	West Nile fever							
	Hepatitis A	1					1	3
	Echinococcosis			1		1		1
	Yellow fever							
	Psittacosis							
	Omsk hemorrhagic fever							
	Relapsing fever							
	Kyasanur forest disease							
	Q fever							
	Rabies							
	Coccidioidomycosis				1	1	1	1
	Monkeypox							
	Hemorrhagic fever with renal syndrome							
	Western equine encephalitis							
	Tick-borne encephalitis							
	Anthrax							
	Scrub typhus(Tsutsugamushi disease)	2		1		1	3	18
	Dengue fever			1	1	2	1	3
	Eastern equine encephalitis							
	Avian influenza (excluding H5N1)							
	Nipah virus infection							
	Japanese spotted fever							2
	Japanese encephalitis							
	Epidemic typhus							
	Hantavirus pulmonary syndrome							
	Herpes B virus infection							
	Glanders							
	Brucellosis							
	Venezuelan equine encephalitis							
	Hendra virus infection							
Botulism								
Malaria			1	1	2	1	5	
Tularemia								
Lyme disease								
Lyssavirus infection(excluding rabies)								
Rift valley fever								
Melioidosis								
Legionellosis	1		5	3	8	12	32	
Leptospirosis								
Rocky mountain spotted fever								

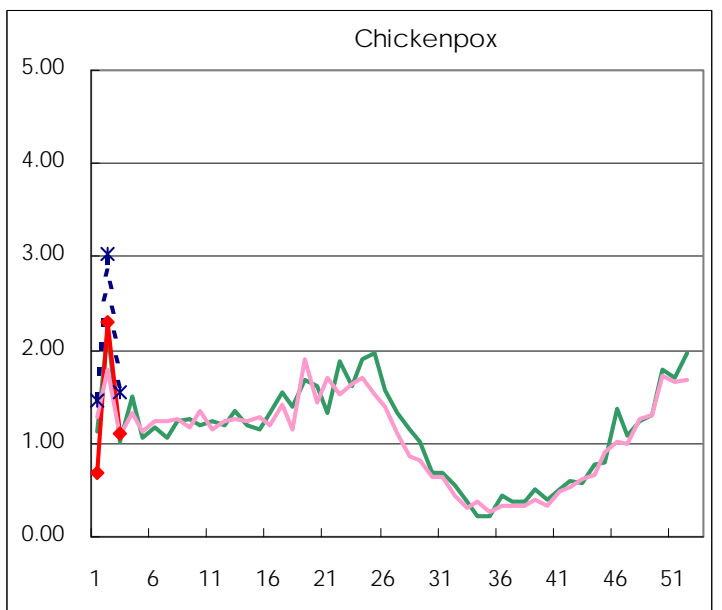
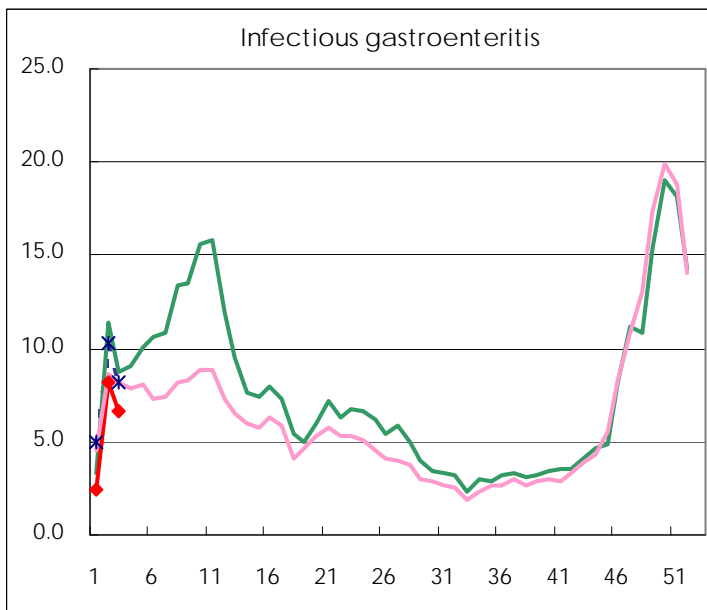
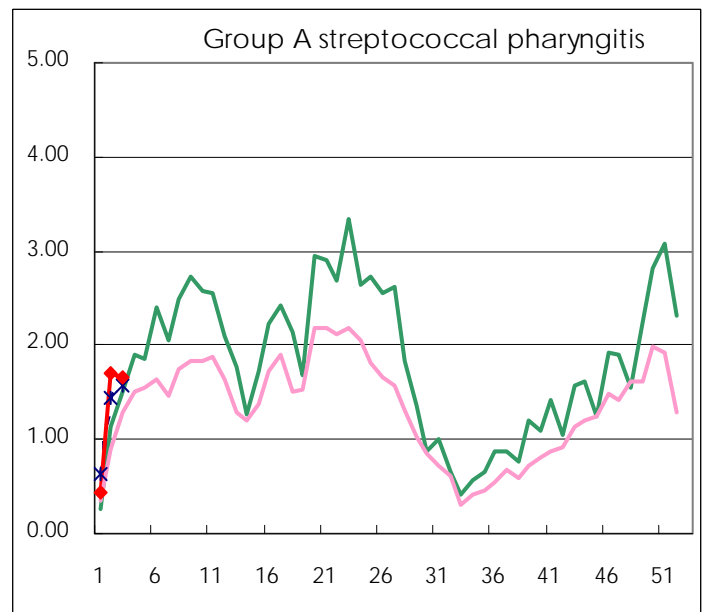
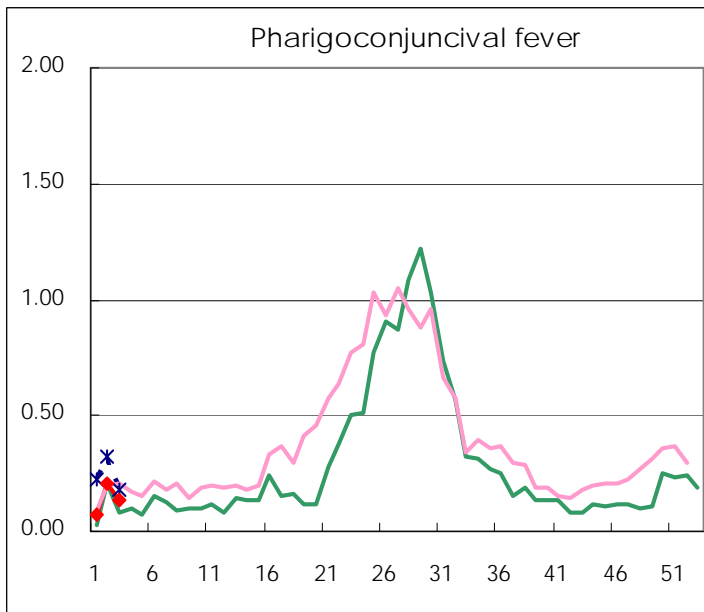
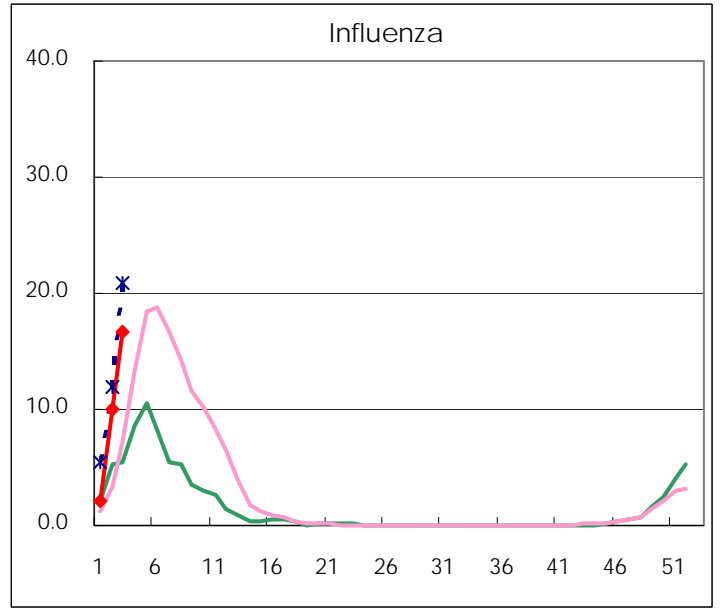
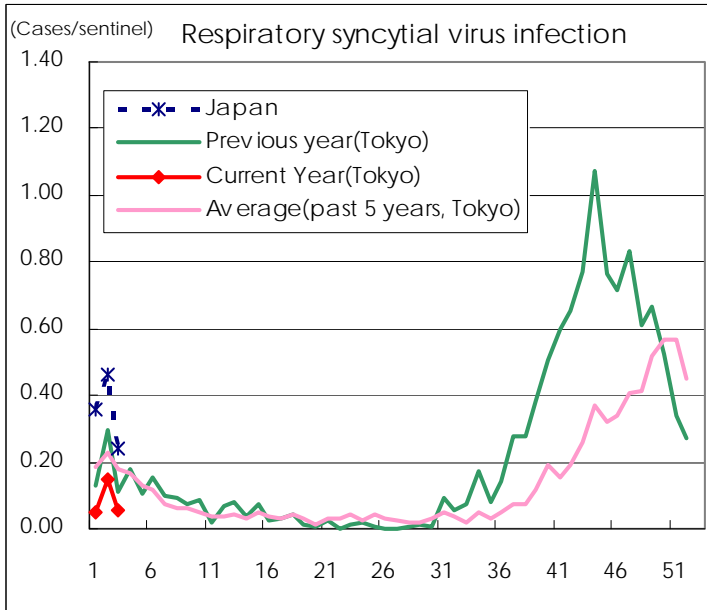
Category	Diseases	Tokyo				Japan		
		52nd	1st	2nd	3rd	Cum 2009	3rd	Cum 2009
V	Amebiasis	3		6	4	10	11	37
	Viral hepatitis(excluding hepatitis A and E)			3	1	4	2	6
	Acute encephalitis(excluding JE and WNE)				1	1	2	10
	Cryptosporidiosis							
	Creutzfeldt-Jakob disease			2		2		2
	Severe invasive streptococcal infections(TSLS)			1		1	3	5
	Acquired immunodeficiency syndrome (AIDS)	4		12	15	27	17	48
	Giardiasis			1	1	2		2
	Meningococcal meningitis							1
	Congenital rubella syndrome							
	Syphilis	4		2	1	3	10	21
	Tetanus			1		1	1	4
	Vancomycin-resistant S. aureus infection							
	Vancomycin-resistant Enterococcus infection						2	4
	Rubella	2					1	4
Measles				3	3	15	43	

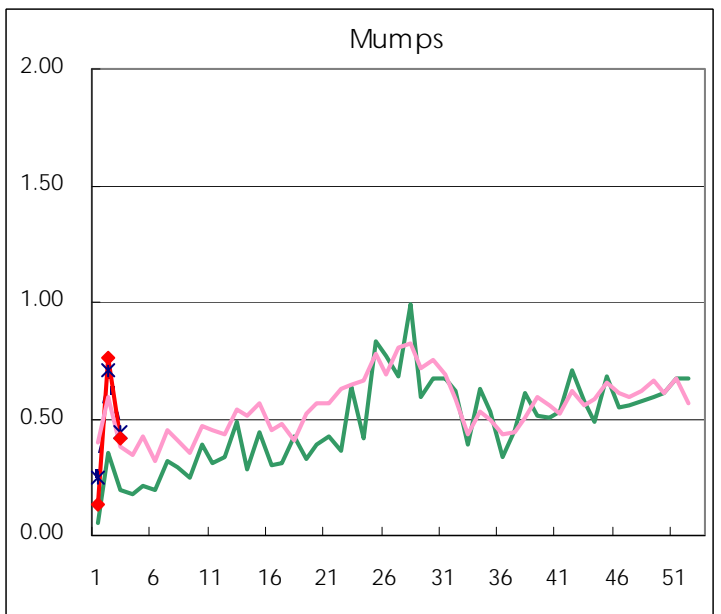
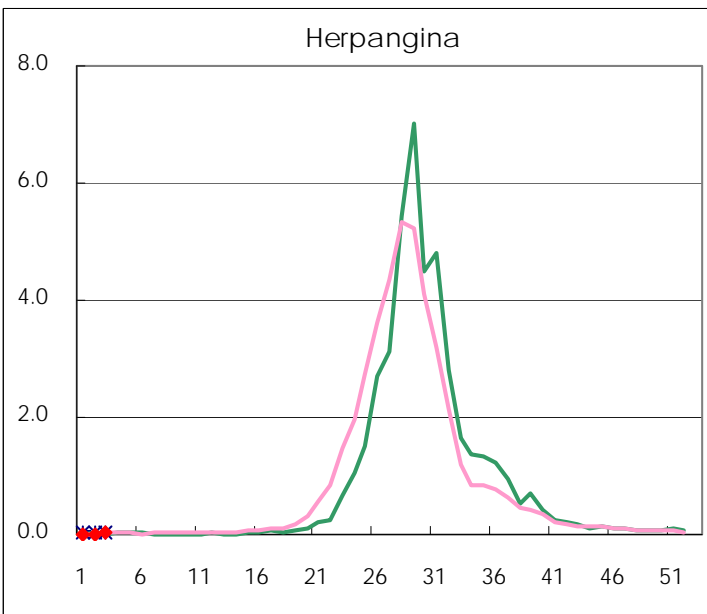
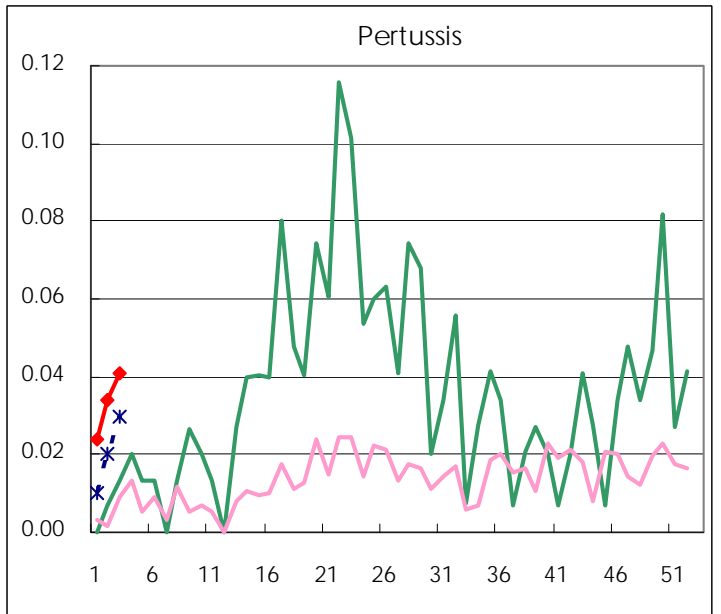
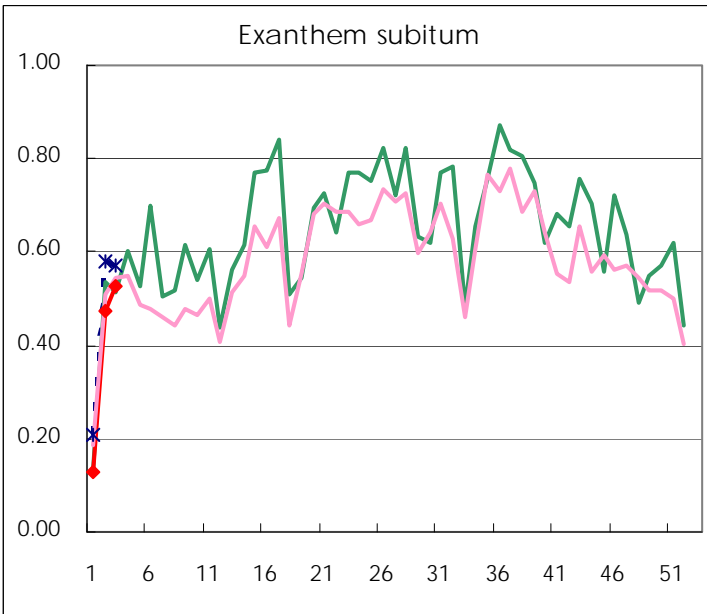
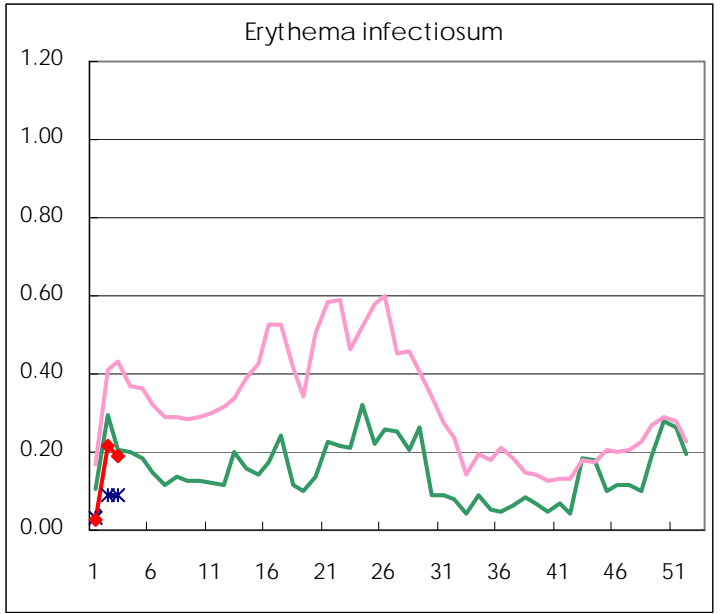
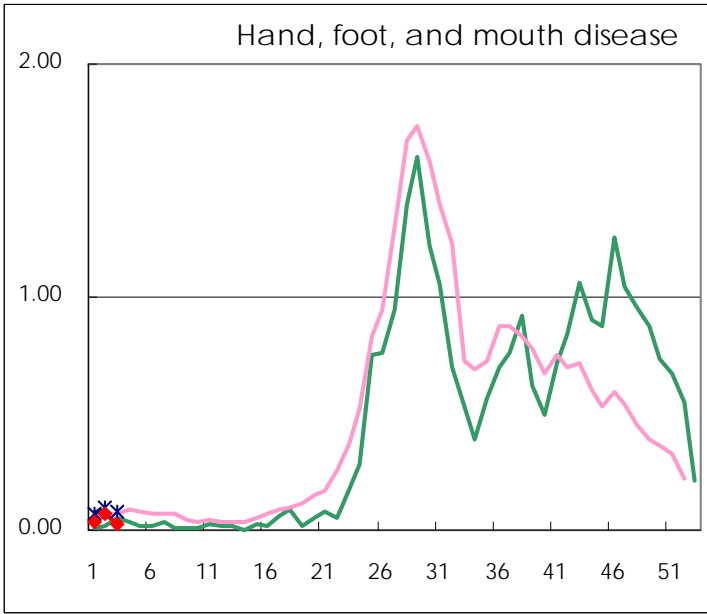
Number of patients with the diseases to be reported
by the designated clinics and hospitals

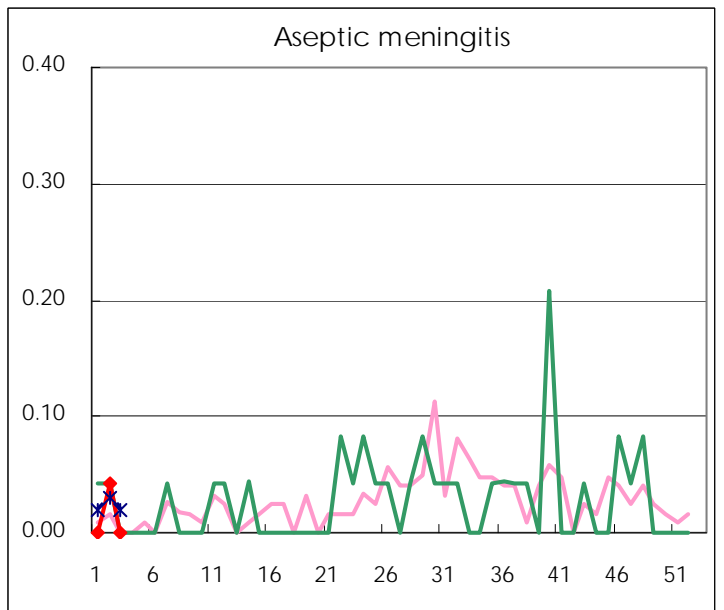
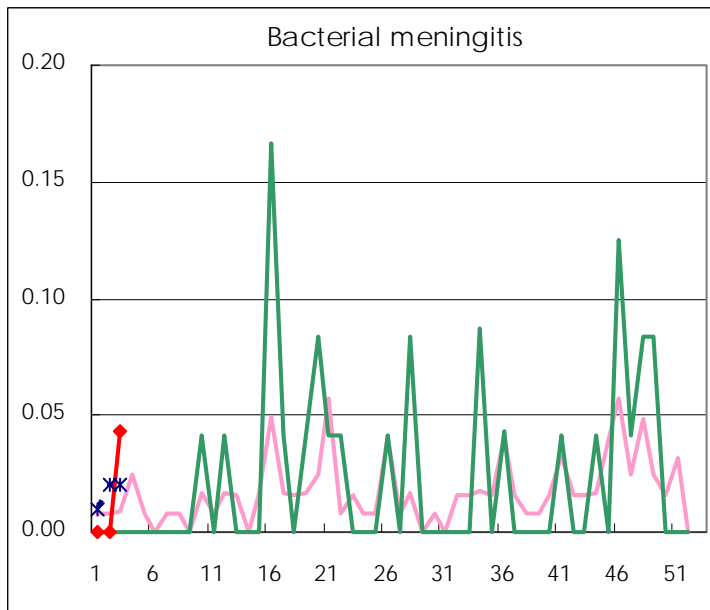
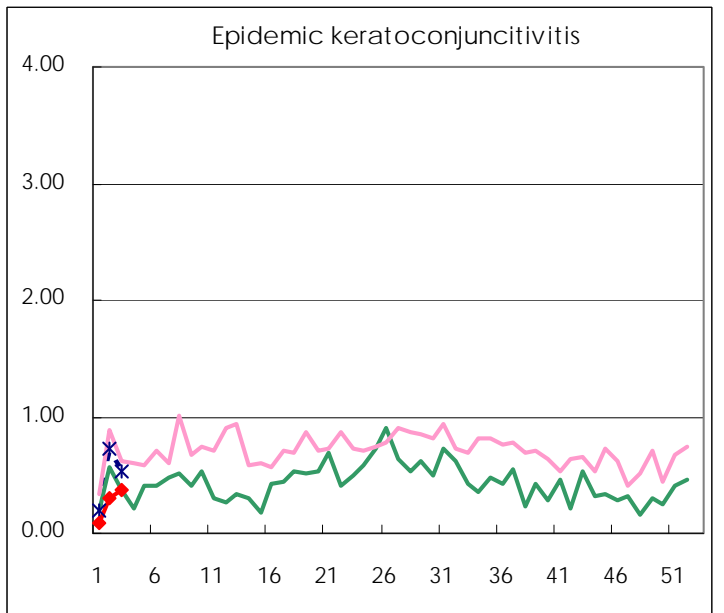
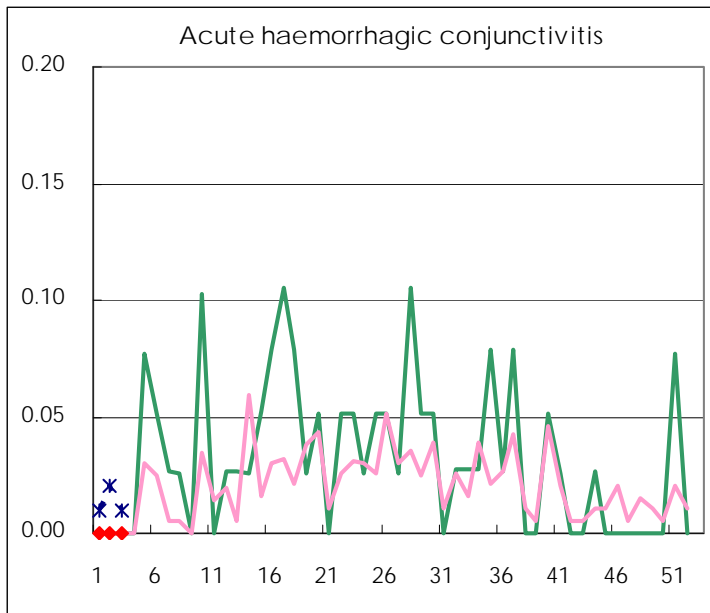
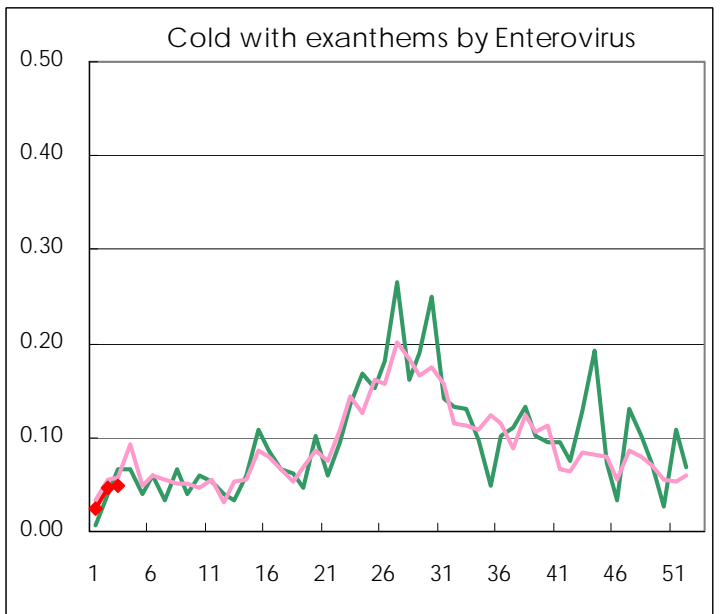
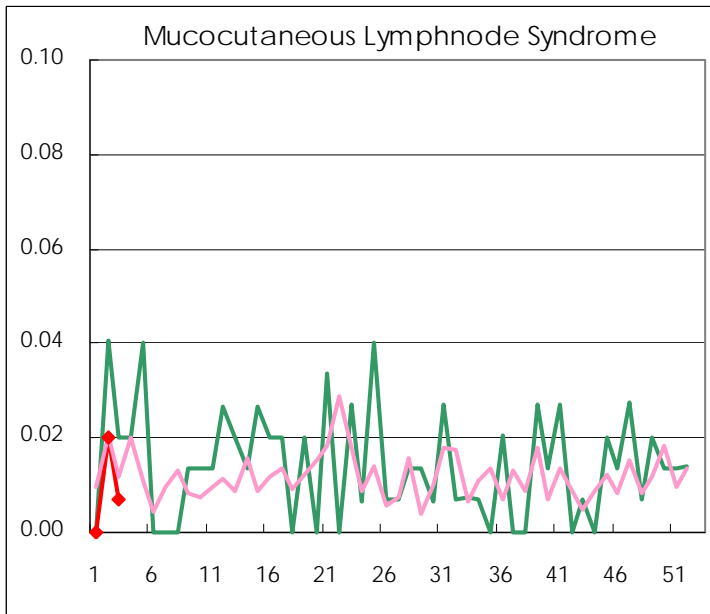
Diseases	2008/2009				
	52nd	1st	2nd	3rd	/sentinel
Respiratory syncytial virus infection	40	6	22	8	0.05
Pharyngoconjunctival fever	37	9	30	19	0.13
Group A streptococcal pharyngitis	340	56	253	242	1.66
Infectious gastroenteritis	2,104	310	1,206	972	6.66
Chickenpox	289	87	341	162	1.11
Hand, foot, and mouth disease	27	4	10	4	0.03
Erythema infectiosum	29	3	32	28	0.19
Exanthem subitum	65	16	70	77	0.53
Pertussis	6	3	5	6	0.04
Herpangina	10	1	2	4	0.03
Mumps	97	17	113	61	0.42
Cold with exanthems by Enterovirus	10	3	7	7	0.05
Mucocutaneous Lymphnode Syndrome	2		3	1	0.01
Influenza	1,457	546	2,861	4,734	16.67
Acute hemorrhagic conjunctivitis					
Epidemic keratoconjunctivitis	17	3	11	14	0.38
Bacterial meningitis				1	0.04
Aseptic meningitis			1		
Mycoplasma pneumonia	12	2	7	1	0.04
Chlamydial pneumonia (excluding psittacosis)	2		2		

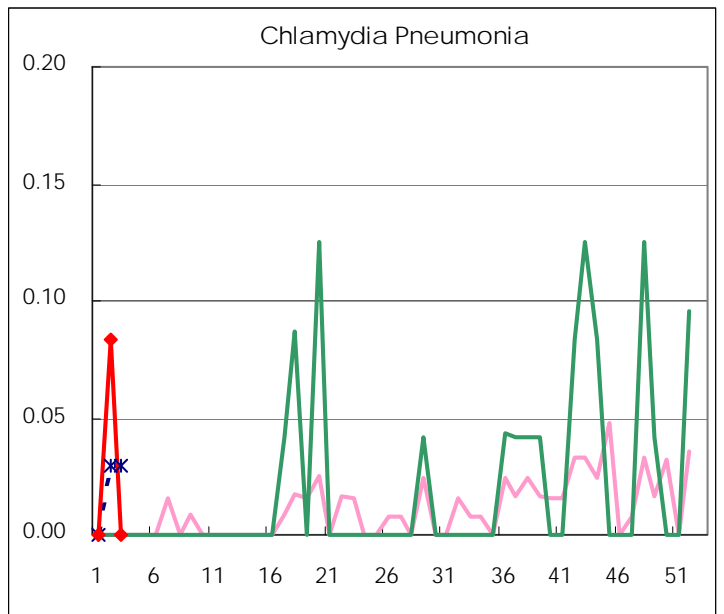
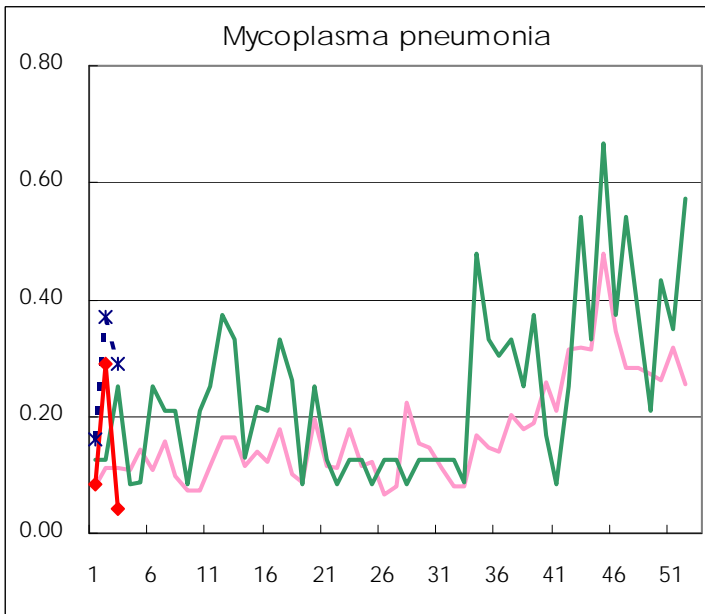
(Blank means 0.)

Disease Trend Graph (weekly reported cases per sentinel in comparison)









Number of sentinel facilities
for weekly reporting

Types of sentinels	Number of sentinels	Sentinels having reported
Pediatric	150	146
Influenza	290	284
Ophthalmic	39	37
Specially-designated	24	23

Tokyo Metropolitan Government
Infectious Disease Surveillance Center