

---

INFECTIOUS DISEASES WEEKLY REPORT

# TOKYO IDWR

Tokyo Metropolitan Infectious Disease Surveillance Center

## 19 February 2009 / Number 7

### Surveillance System in Tokyo, Japan

The infectious diseases which all physicians must report

All physicians must report to health centers the incidence of the diseases which are shown at page one. Health centers electronically report the individual cases to Tokyo Metropolitan Infectious Disease Surveillance Center.

The infectious diseases required to be reported by the sentinels

The numbers of patients who visit the sentinel clinics or hospitals during a week are reported to health centers in Tokyo. And they electronically report the numbers to Tokyo Metropolitan Infectious Disease Surveillance Center. We have about 400 sentinel clinics and hospitals in Tokyo.

1st Week is early January and 52nd Week is end of December.

Tokyo Metropolitan Institute of Public Health  
Epidemiological Information Office

TEL:81-3-3363-3213 FAX:81-3-5332-7365

e-mail:[idsc@tokyo-eiken.go.jp](mailto:idsc@tokyo-eiken.go.jp)

URL:[idsc.tokyo-eiken.go.jp/](http://idsc.tokyo-eiken.go.jp/)

---

## Number of patients with the diseases which all physicians must report

Category	Diseases	Tokyo				Cum 2009	Japan	
		4th	5th	6th	7th		7th	Cum 2009
I	Ebola hemorrhagic fever							
	Crimean-Congo hemorrhagic fever							
	Smallpox							
	South American hemorrhagic fever							
	Plague							
	Marburg disease							
	Lassa fever							
II	Acute poliomyelitis							
	Tuberculosis	48	75	68	46	390	256	2536
	Diphtheria							
	Severe Acute Respiratory Syndrome(SARS)							
	Avian influenza H5N1							
III	Cholera						1	1
	Shigellosis	1				3	1	15
	Enterohemorrhagic Escherichia coli infection					2	6	67
	Typhoid fever		1			1		2
	Paratyphoid fever							
IV	Hepatitis E			1		1		3
	West Nile fever							
	Hepatitis A							8
	Echinococcosis					1		1
	Yellow fever							
	Psittacosis							1
	Omsk hemorrhagic fever							
	Relapsing fever							
	Kyasanur forest disease							
	Q fever							
	Rabies							
	Coccidioidomycosis					1		1
	Monkeypox							
	Hemorrhagic fever with renal syndrome							
	Western equine encephalitis							
	Tick-borne encephalitis							
	Anthrax							
	Scrub typhus(Tsutsugamushi disease)				1	2	1	33
	Dengue fever	1				3		12
	Eastern equine encephalitis							
	Avian influenza (excluding H5N1)							
	Nipah virus infection							
	Japanese spotted fever							2
	Japanese encephalitis							
	Epidemic typhus							
	Hantavirus pulmonary syndrome							
	Herpes B virus infection							
	Glanders							
	Brucellosis							
	Venezuelan equine encephalitis							
Hendra virus infection								
Botulism								
Malaria		1	1	1	4	1	8	
Tularemia								
Lyme disease								
Lyssavirus infection(excluding rabies)								
Rift valley fever								
Melioidosis								
Legionellosis	1	1		2	12	6	87	
Leptospirosis							1	
Rocky mountain spotted fever								

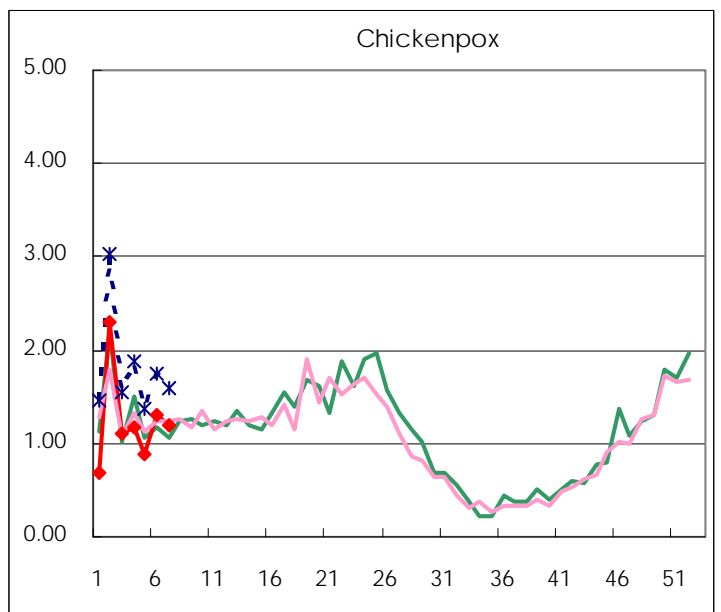
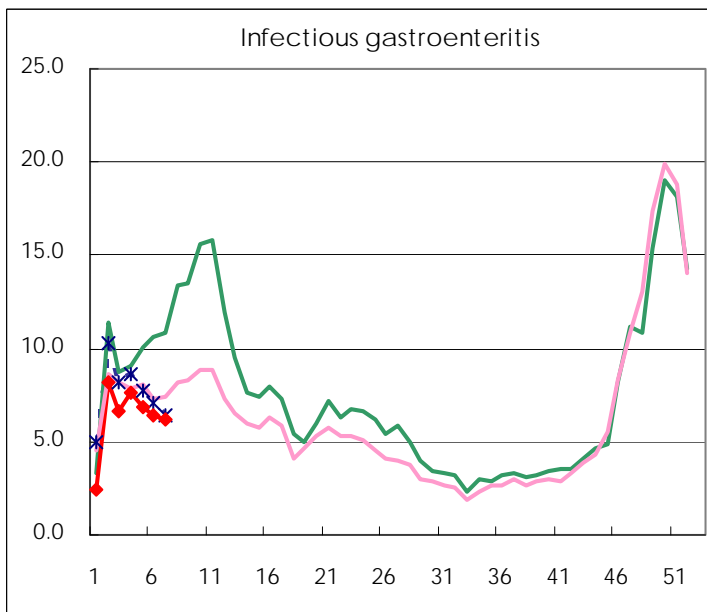
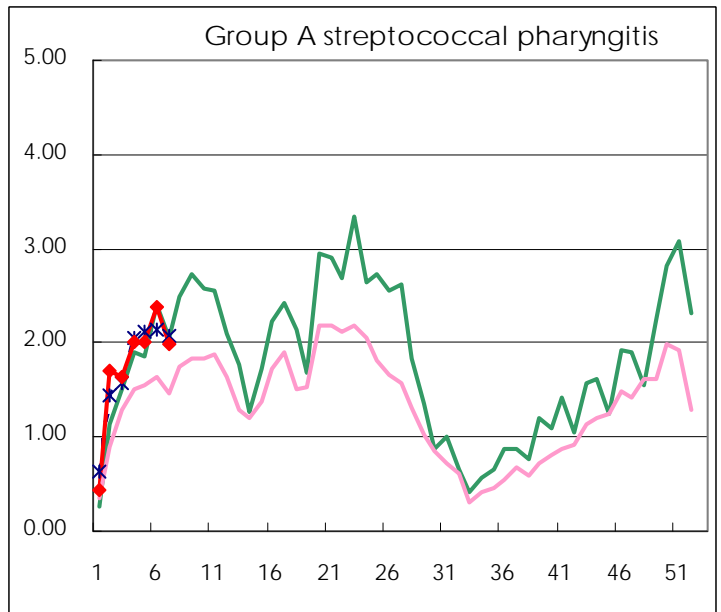
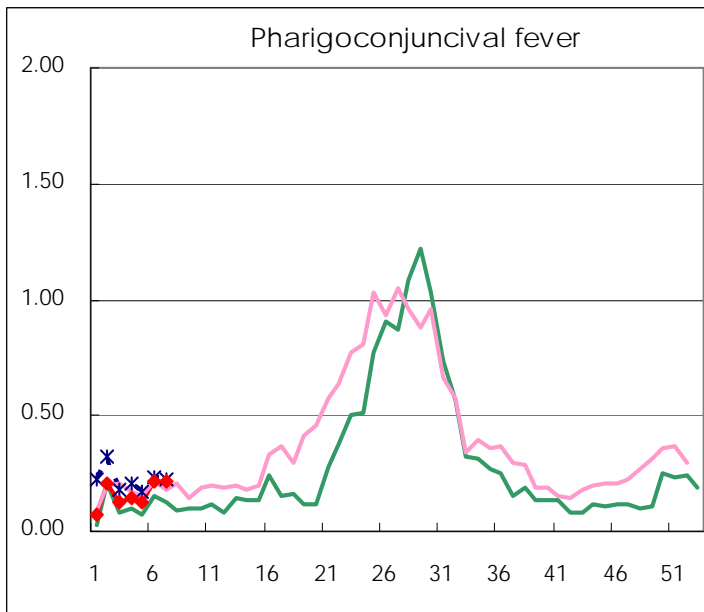
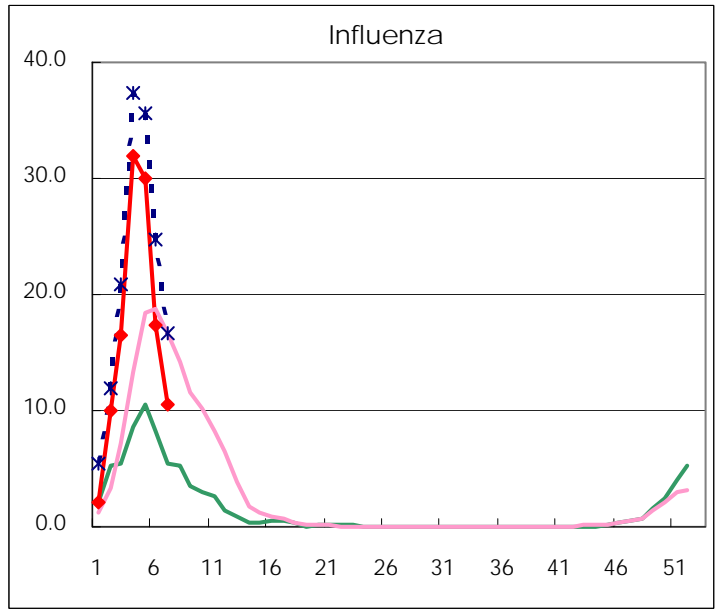
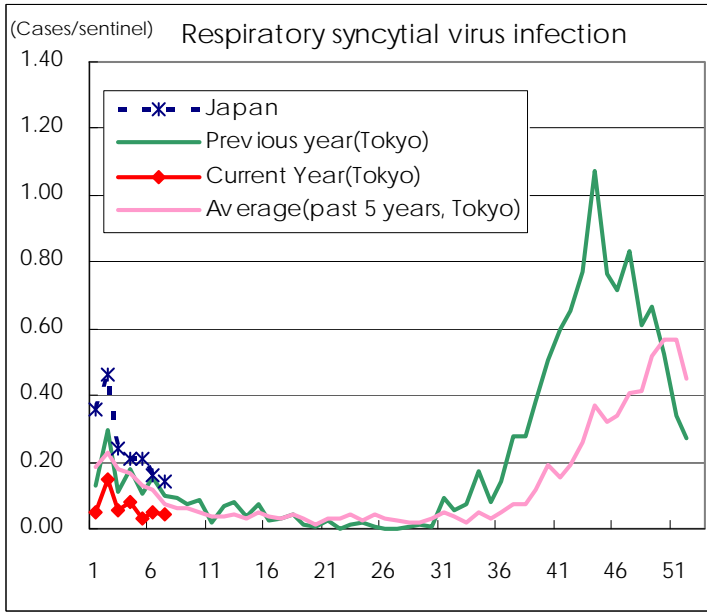
Category	Diseases	Tokyo					Japan	
		4th	5th	6th	7th	Cum 2009	7th	Cum 2009
V	Amebiasis	4	1	4	2	21	14	109
	Viral hepatitis(excluding hepatitis A and E)		2	1	1	8	4	25
	Acute encephalitis(excluding JE and WNE)	1	1	1		4	1	39
	Cryptosporidiosis							
	Creutzfeldt-Jakob disease				1	3	2	14
	Severe invasive streptococcal infections(TSLS)	1				2		14
	Acquired immunodeficiency syndrome (AIDS)	6	12	12	11	68	11	148
	Giardiasis		1	1	1	5	1	5
	Meningococcal meningitis							3
	Congenital rubella syndrome							
	Syphilis	10	4	4	5	26	7	82
	Tetanus					1		6
	Vancomycin-resistant S. aureus infection							
	Vancomycin-resistant Enterococcus infection	1				1		11
	Rubella		1			1		16
Measles	4	4	3	2	16	10	106	

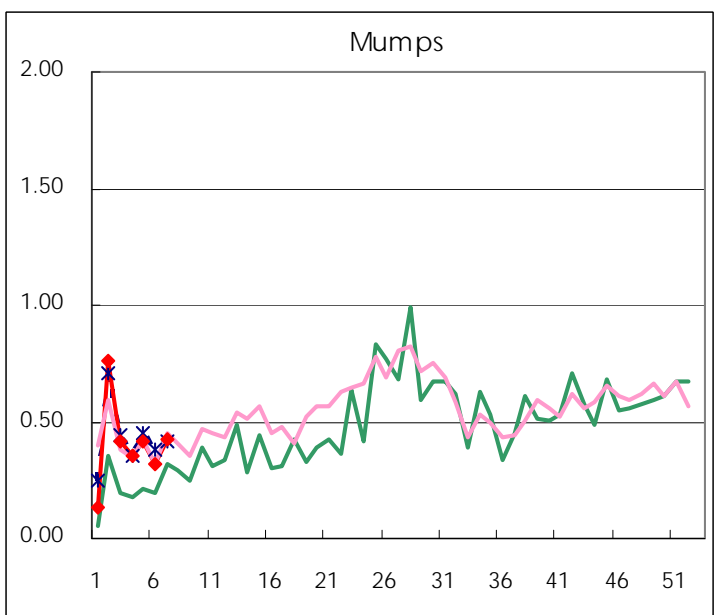
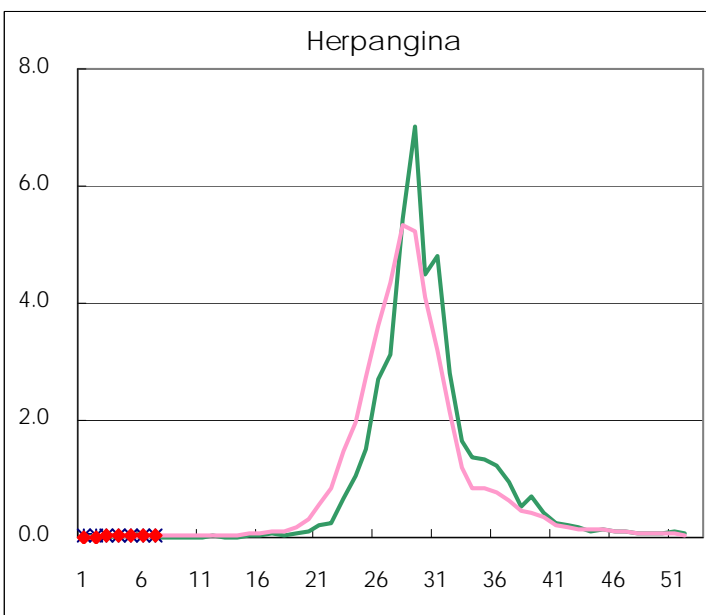
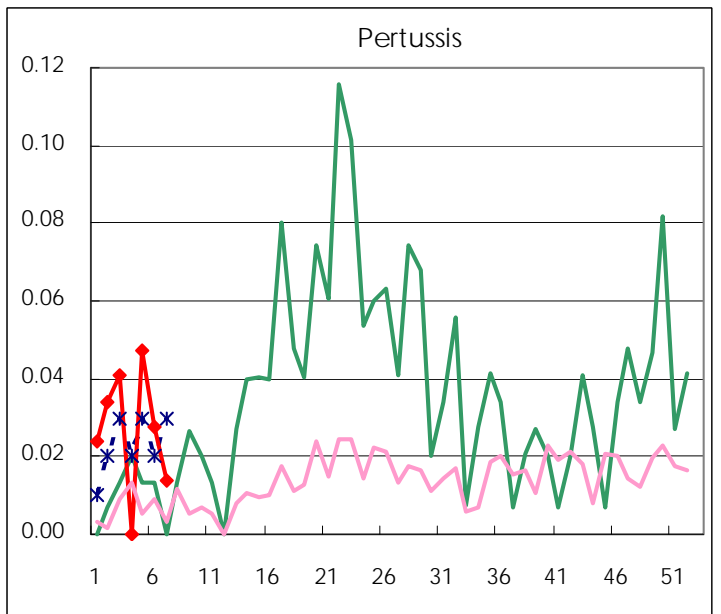
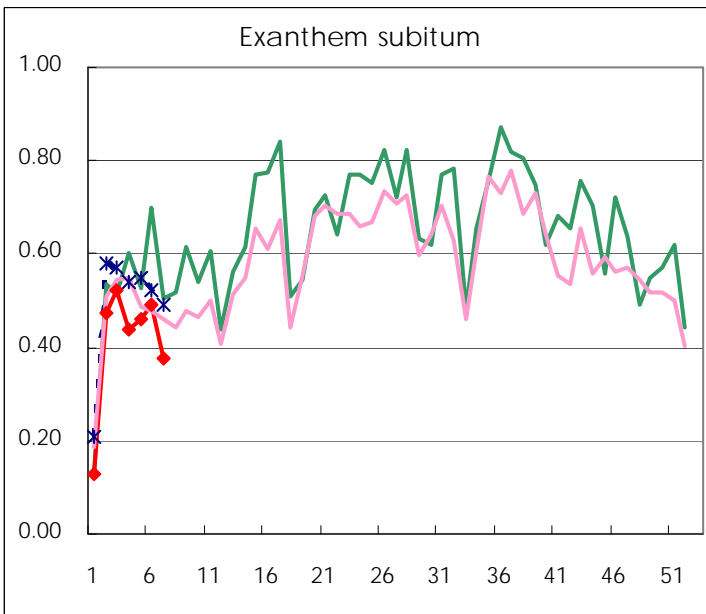
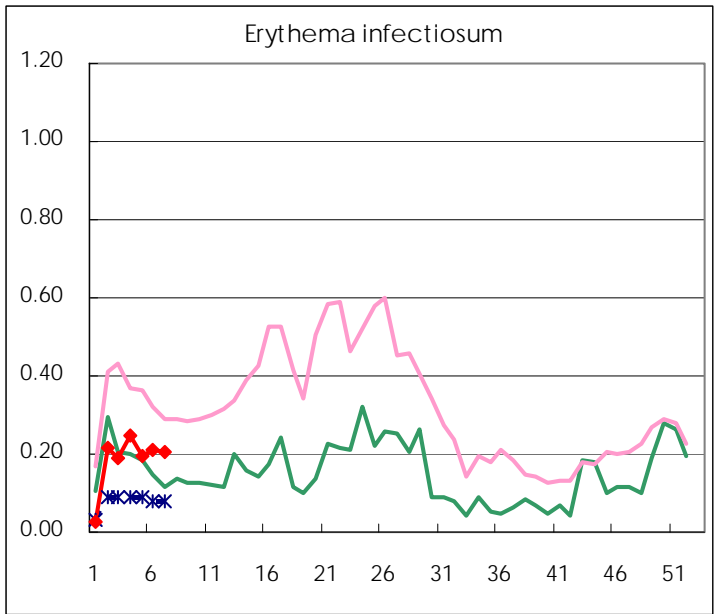
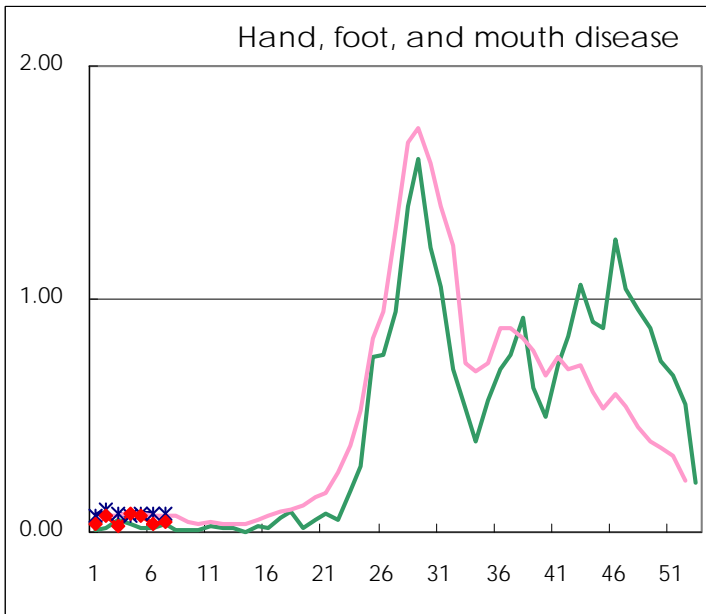
Number of patients with the diseases to be reported  
by the designated clinics and hospitals

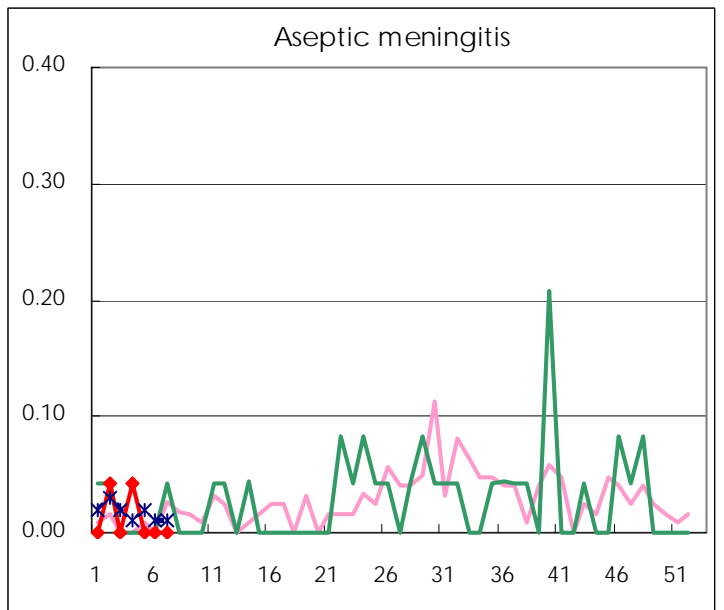
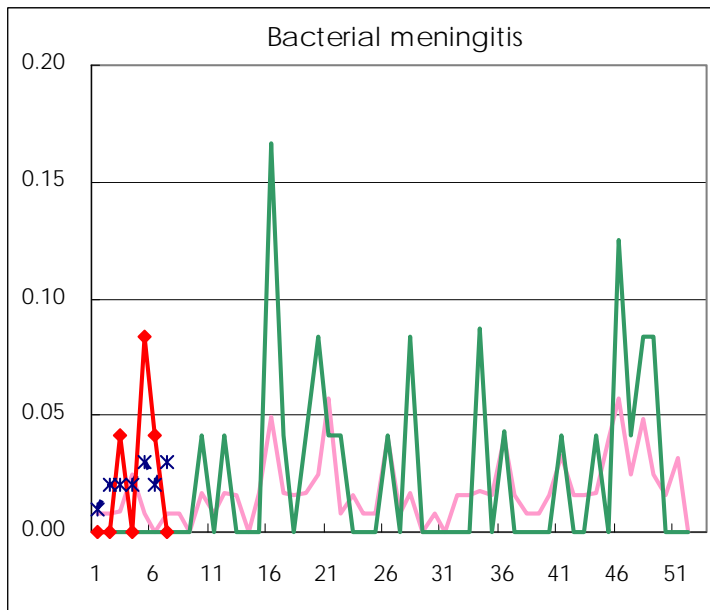
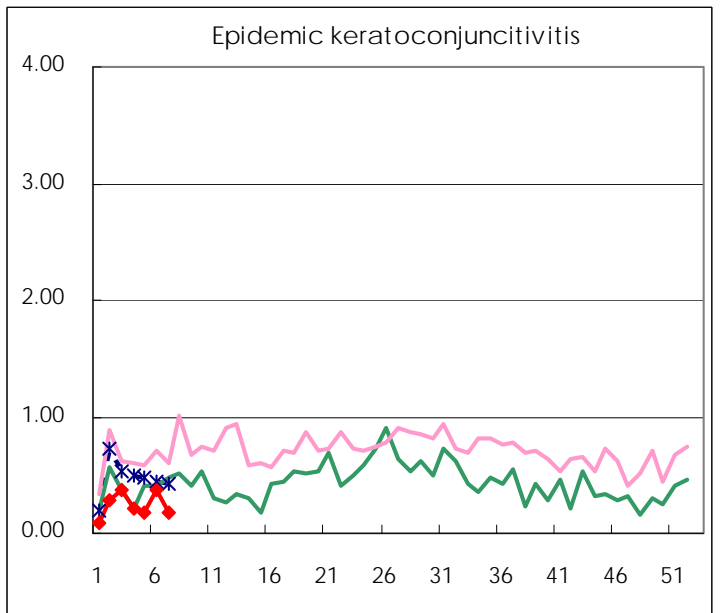
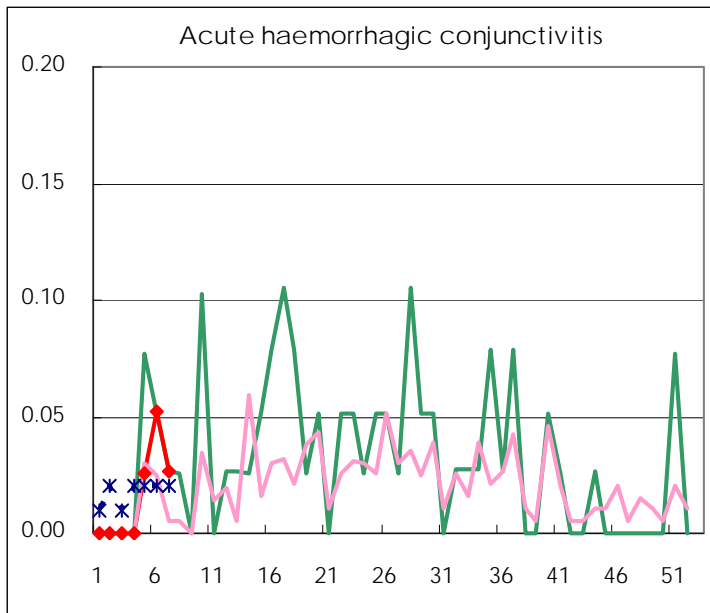
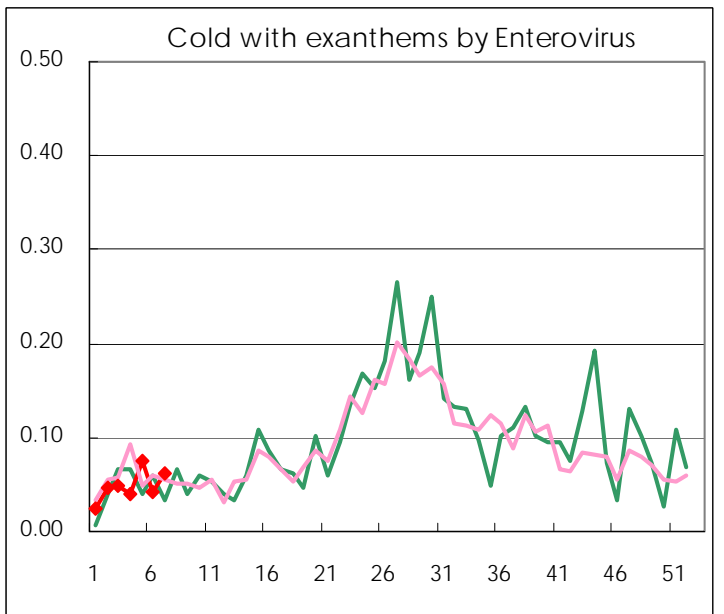
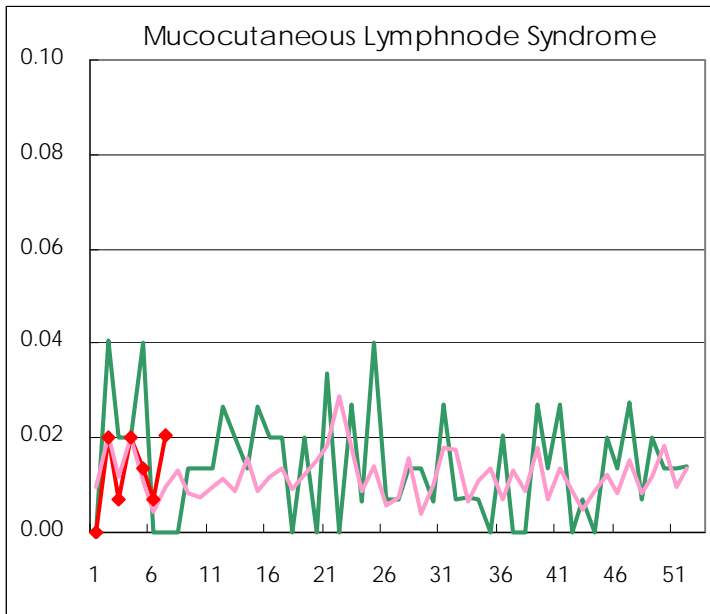
Diseases	2009				
	4th	5th	6th	7th	/sentinel
Respiratory syncytial virus infection	12	5	7	6	0.04
Pharyngoconjunctival fever	21	18	31	32	0.22
Group A streptococcal pharyngitis	297	296	347	291	1.98
Infectious gastroenteritis	1,124	1,022	944	911	6.20
Chickenpox	175	132	192	176	1.20
Hand, foot, and mouth disease	12	11	5	7	0.05
Erythema infectiosum	37	29	31	30	0.20
Exanthem subitum	65	68	72	55	0.37
Pertussis		7	4	2	0.01
Herpangina	6	5	3	3	0.02
Mumps	52	61	47	62	0.42
Cold with exanthems by Enterovirus	6	11	6	9	0.06
Mucocutaneous Lymphnode Syndrome	3	2	1	3	0.02
Influenza	9,166	8,582	4,921	3,005	10.58
Acute hemorrhagic conjunctivitis		1	2	1	0.03
Epidemic keratoconjunctivitis	8	7	14	7	0.18
Bacterial meningitis		2	1		
Aseptic meningitis	1				
Mycoplasma pneumonia	4	6	4	4	0.17
Chlamydial pneumonia (excluding psittacosis)	2	1	3	2	0.08

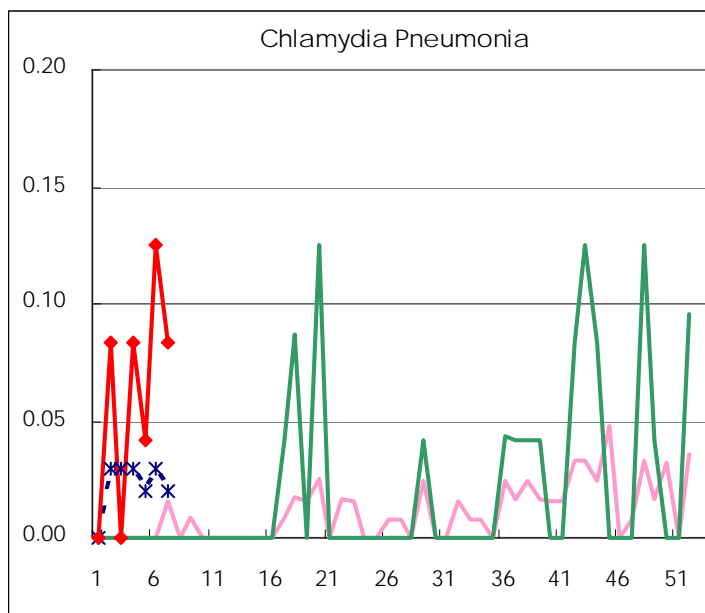
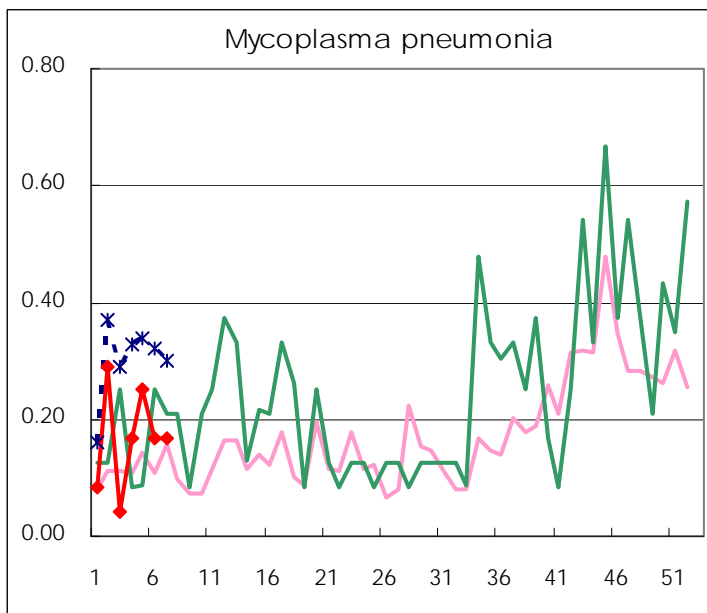
( Blank means 0. )

# Disease Trend Graph (weekly reported cases per sentinel in comparison)









Number of sentinel facilities  
for weekly reporting

Types of sentinels	Number of sentinels	Sentinels having reported
Pediatric	150	147
Influenza	290	284
Ophthalmic	39	38
Specially-designated	24	24

Tokyo Metropolitan Government  
**Infectious Disease Surveillance Center**