
INFECTIOUS DISEASES WEEKLY REPORT

TOKYO IDWR

Tokyo Metropolitan Infectious Disease Surveillance Center

19 March 2009 / Number 11

Surveillance System in Tokyo, Japan

The infectious diseases which all physicians must report

All physicians must report to health centers the incidence of the diseases which are shown at page one. Health centers electronically report the individual cases to Tokyo Metropolitan Infectious Disease Surveillance Center.

The infectious diseases required to be reported by the sentinels

The numbers of patients who visit the sentinel clinics or hospitals during a week are reported to health centers in Tokyo. And they electronically report the numbers to Tokyo Metropolitan Infectious Disease Surveillance Center. We have about 400 sentinel clinics and hospitals in Tokyo.

1st Week is early January and 52nd Week is end of December.

Tokyo Metropolitan Institute of Public Health
Epidemiological Information Office

TEL:81-3-3363-3213 FAX:81-3-5332-7365

e-mail:idsc@tokyo-eiken.go.jp

URL:idsc.tokyo-eiken.go.jp/

Number of patients with the diseases which all physicians must report

Category	Diseases	Tokyo				Cum 2009	Japan	
		8th	9th	10th	11th		11th	Cum 2009
I	Ebola hemorrhagic fever							
	Crimean-Congo hemorrhagic fever							
	Smallpox							
	South American hemorrhagic fever							
	Plague							
	Marburg disease							
	Lassa fever							
II	Acute poliomyelitis							
	Tuberculosis	76	63	76	53	706	345	4602
	Diphtheria							
	Severe Acute Respiratory Syndrome(SARS)							
	Avian influenza H5N1							
III	Cholera							2
	Shigellosis	1	4	2		10	7	38
	Enterohemorrhagic Escherichia coli infection	3	2		1	8	7	159
	Typhoid fever			1	2	4	1	5
	Paratyphoid fever			1		1	1	2
IV	Hepatitis E	2				3		8
	West Nile fever							
	Hepatitis A		2	1		3		19
	Echinococcosis					1		6
	Yellow fever							
	Psittacosis							1
	Omsk hemorrhagic fever							
	Relapsing fever							
	Kyasanur forest disease							
	Q fever							
	Rabies							
	Coccidioidomycosis					1		1
	Monkeypox							
	Hemorrhagic fever with renal syndrome							
	Western equine encephalitis							
	Tick-borne encephalitis							
	Anthrax							
	Scrub typhus(Tsutsugamushi disease)					2		34
	Dengue fever		1	1		5	1	18
	Eastern equine encephalitis							
	Avian influenza (excluding H5N1)							
	Nipah virus infection							
	Japanese spotted fever							4
	Japanese encephalitis							
	Epidemic typhus							
	Hantavirus pulmonary syndrome							
	Herpes B virus infection							
	Glanders							
	Brucellosis							
	Venezuelan equine encephalitis							
Hendra virus infection								
Botulism								
Malaria	2	1		1	8	1	15	
Tularemia								
Lyme disease								
Lyssavirus infection(excluding rabies)								
Rift valley fever								
Melioidosis								
Legionellosis		1	1	1	15	9	126	
Leptospirosis							1	
Rocky mountain spotted fever								

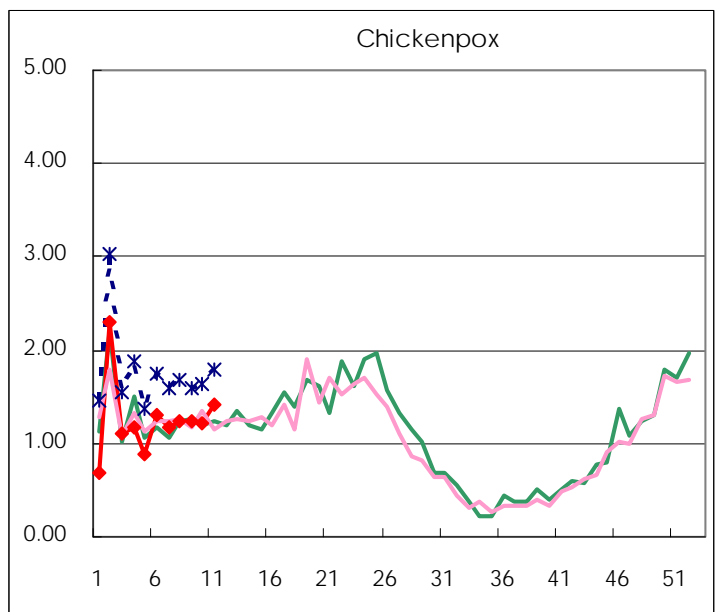
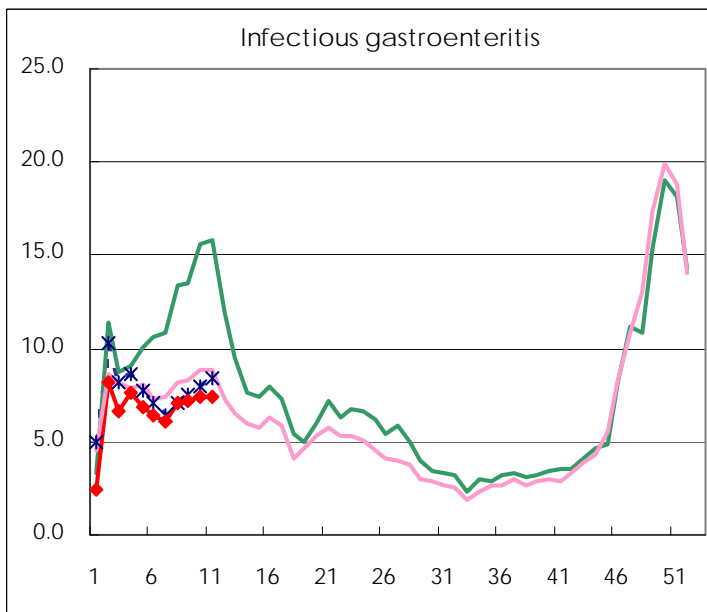
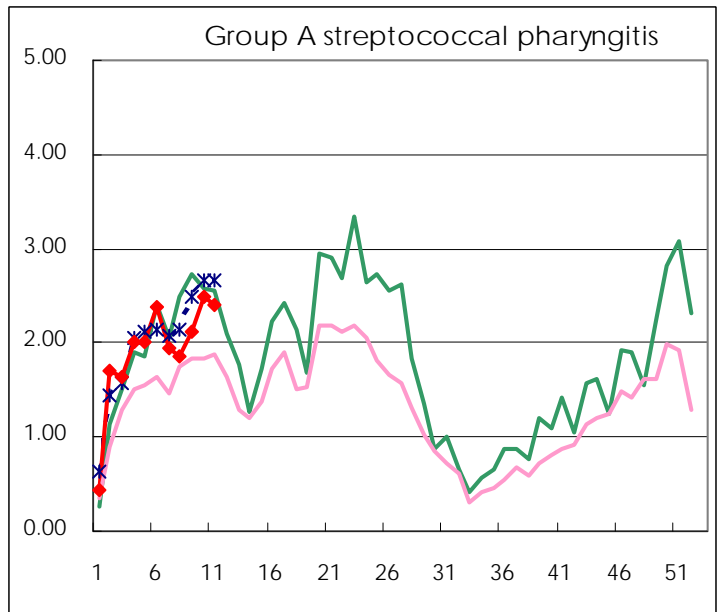
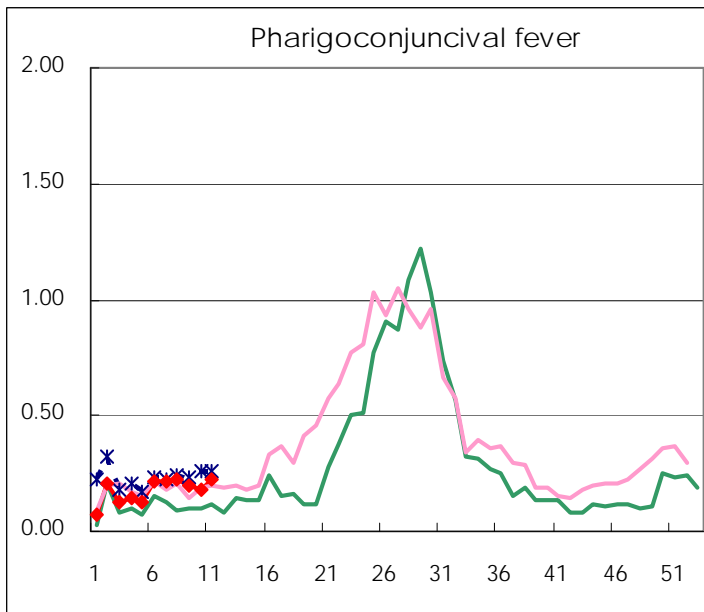
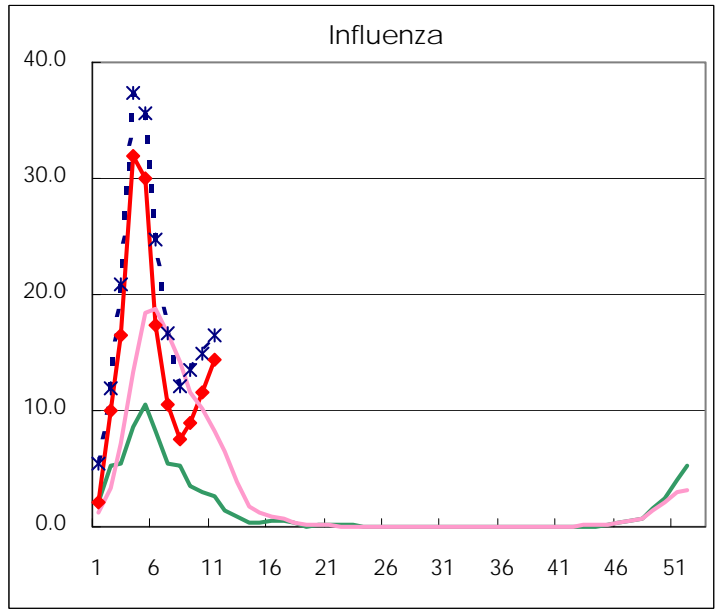
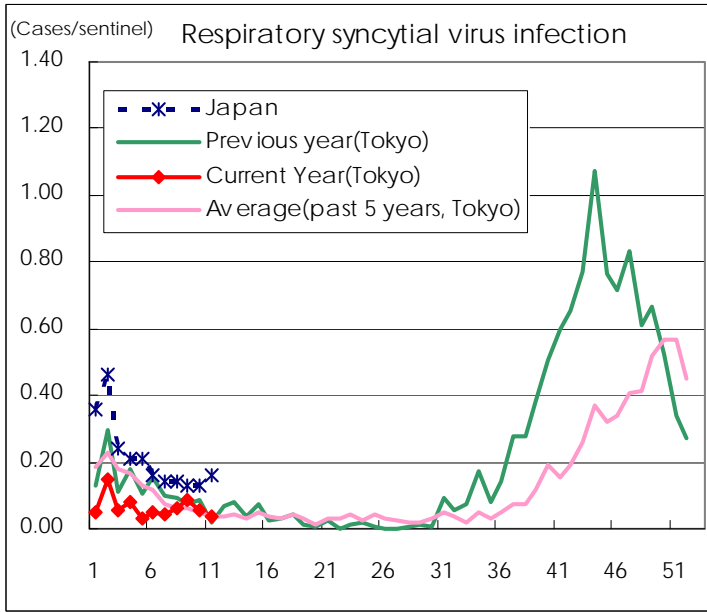
Category	Diseases	Tokyo				Japan		
		8th	9th	10th	11th	Cum 2009	11th	Cum 2009
V	Amebiasis	4		3	2	30	13	185
	Viral hepatitis(excluding hepatitis A and E)		1	1	1	11	2	39
	Acute encephalitis(excluding JE and WNE)	2		1		7		58
	Cryptosporidiosis							1
	Creutzfeldt-Jakob disease					3	1	19
	Severe invasive streptococcal infections(TSLS)		1			3	4	24
	Acquired immunodeficiency syndrome (AIDS)	7	12	16	6	109	14	285
	Giardiasis		2	2	1	10		13
	Meningococcal meningitis							4
	Congenital rubella syndrome							
	Syphilis	4	2	6	6	44	8	145
	Tetanus					1		12
	Vancomycin-resistant S. aureus infection							
	Vancomycin-resistant Enterococcus infection					1	1	19
	Rubella				1	2	6	42
Measles	2	2	1	2	23	13	167	

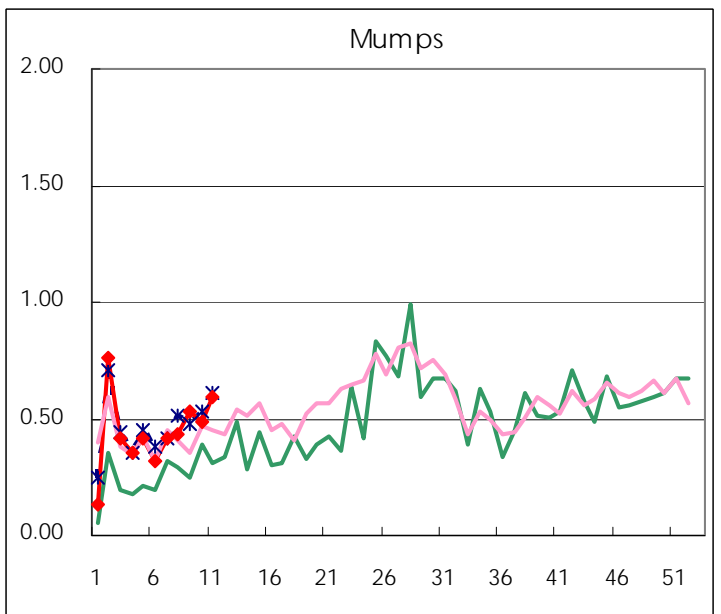
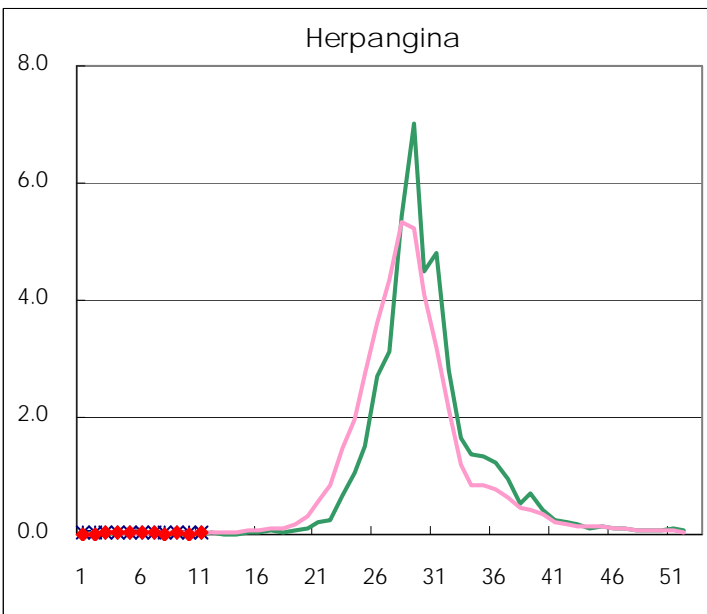
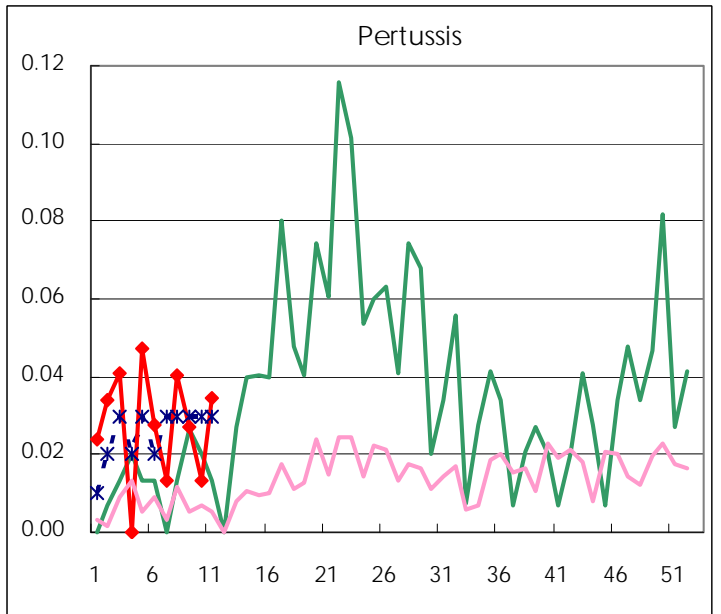
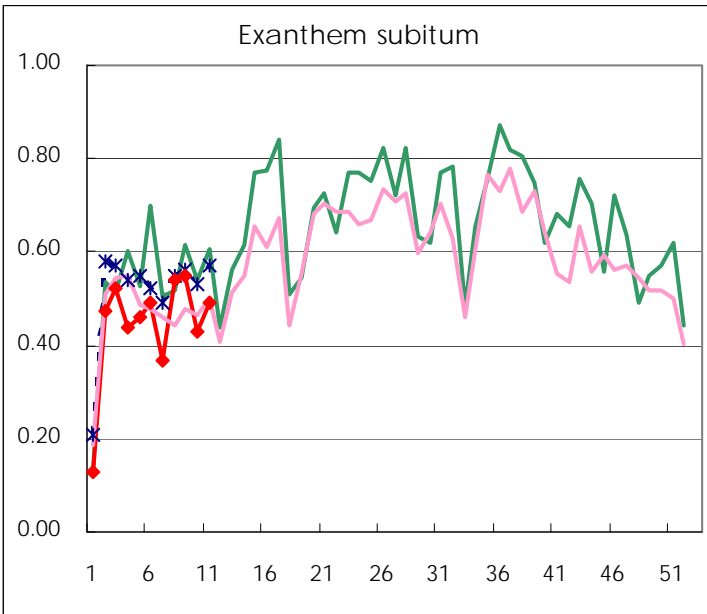
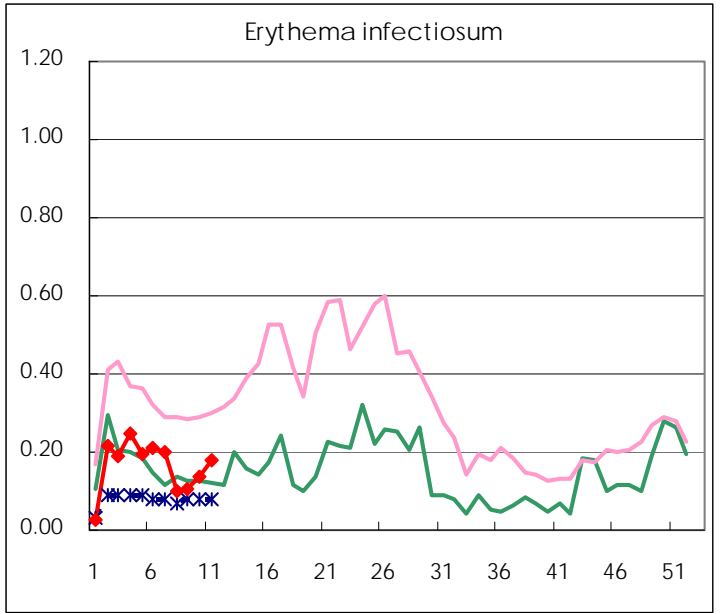
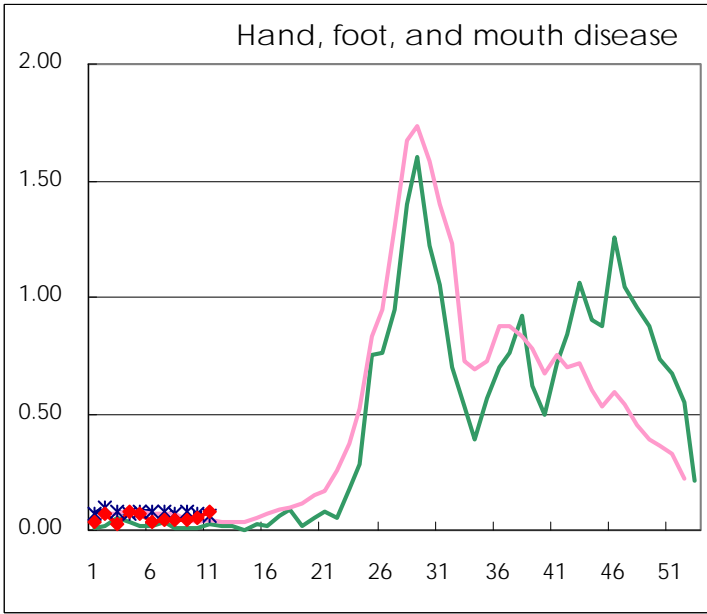
Number of patients with the diseases to be reported
by the designated clinics and hospitals

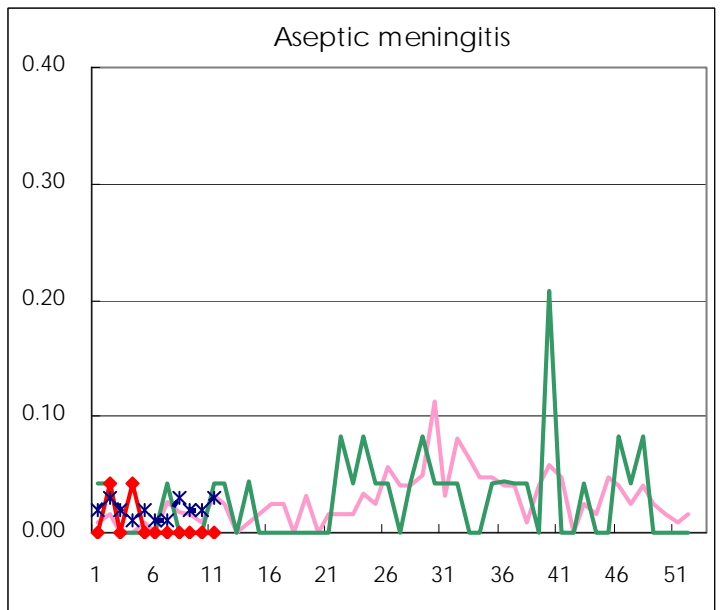
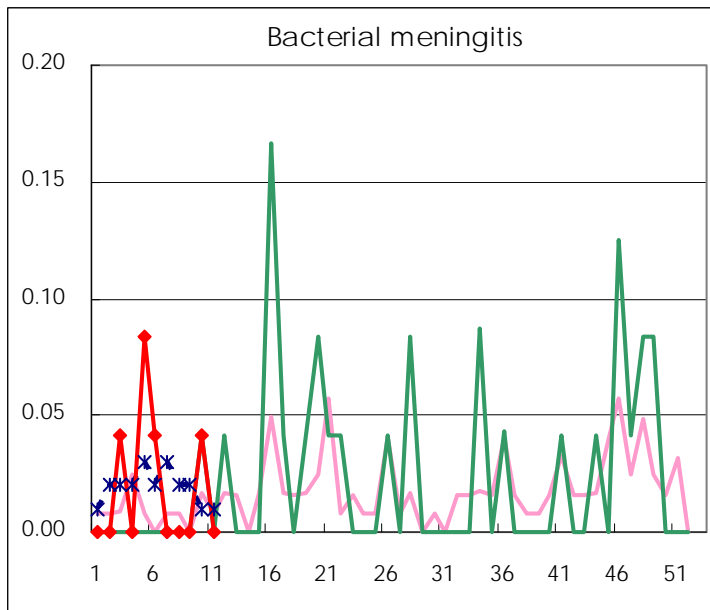
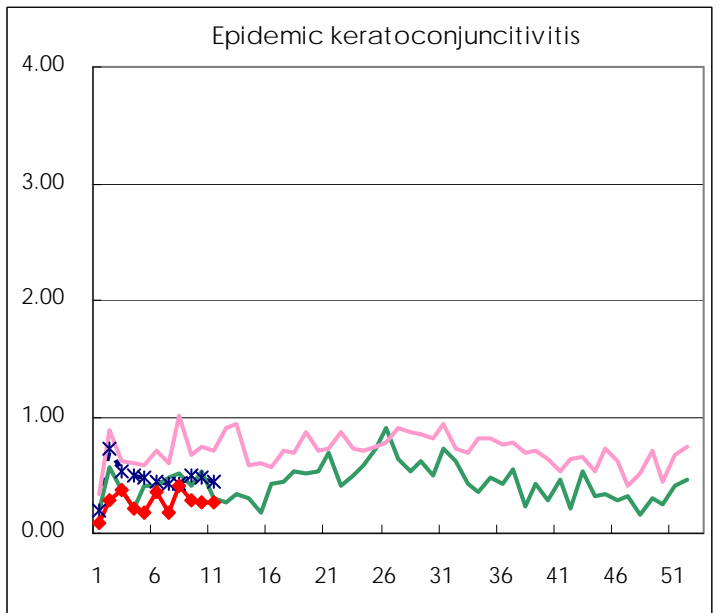
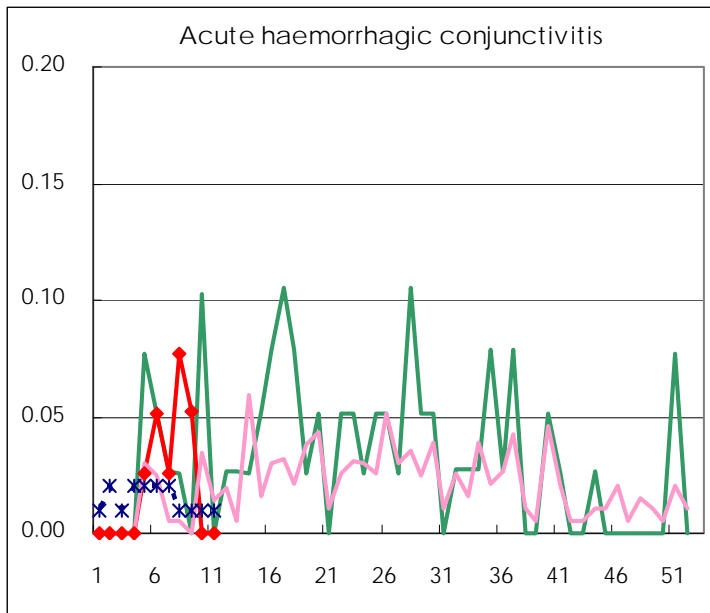
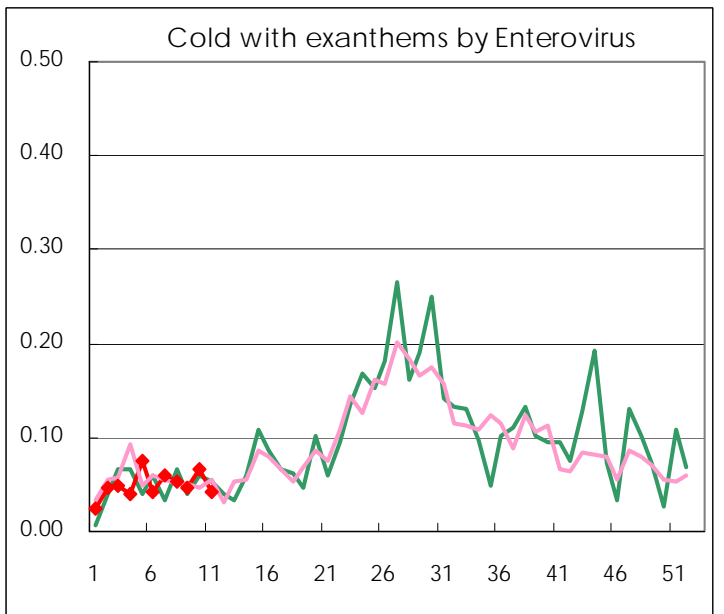
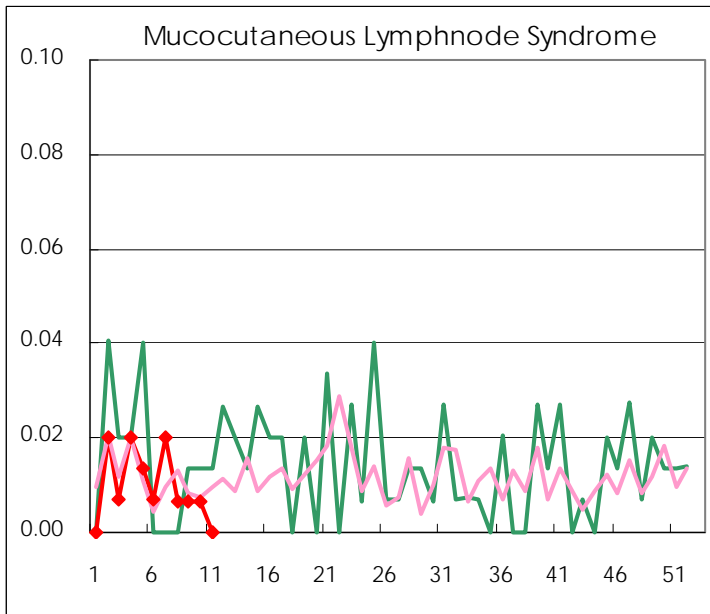
Diseases	2009				
	8th	9th	10th	11th	/sentinel
Respiratory syncytial virus infection	9	13	8	5	0.03
Pharyngoconjunctival fever	33	30	27	32	0.22
Group A streptococcal pharyngitis	274	317	372	347	2.39
Infectious gastroenteritis	1,040	1,064	1,102	1,075	7.41
Chickenpox	183	185	181	206	1.42
Hand, foot, and mouth disease	6	6	8	11	0.08
Erythema infectiosum	15	16	20	26	0.18
Exanthem subitum	80	82	64	71	0.49
Pertussis	6	4	2	5	0.03
Herpangina	2	3	1	6	0.04
Mumps	64	79	73	86	0.59
Cold with exanthems by Enterovirus	8	7	10	6	0.04
Mucocutaneous Lymphnode Syndrome	1	1	1		
Influenza	2,183	2,585	3,328	4,076	14.30
Acute hemorrhagic conjunctivitis	3	2			
Epidemic keratoconjunctivitis	16	11	10	10	0.26
Bacterial meningitis			1		
Aseptic meningitis					
Mycoplasma pneumonia	5	4	2	11	0.48
Chlamydial pneumonia (excluding psittacosis)		3	3		

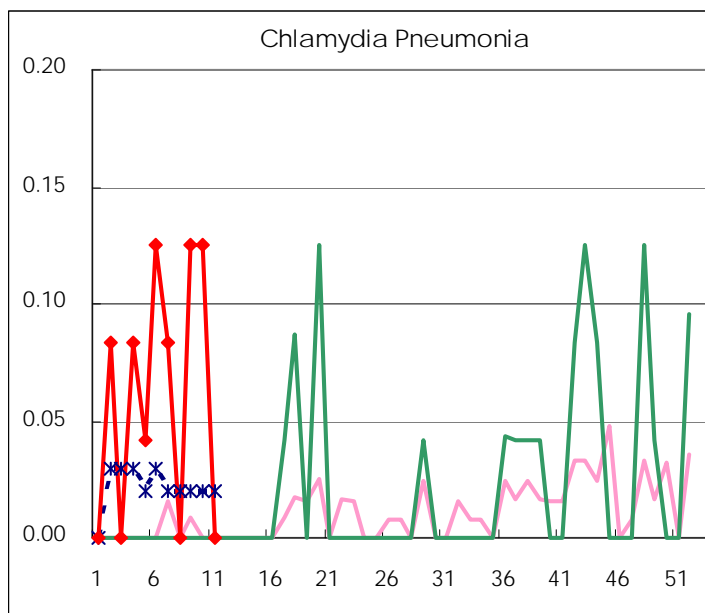
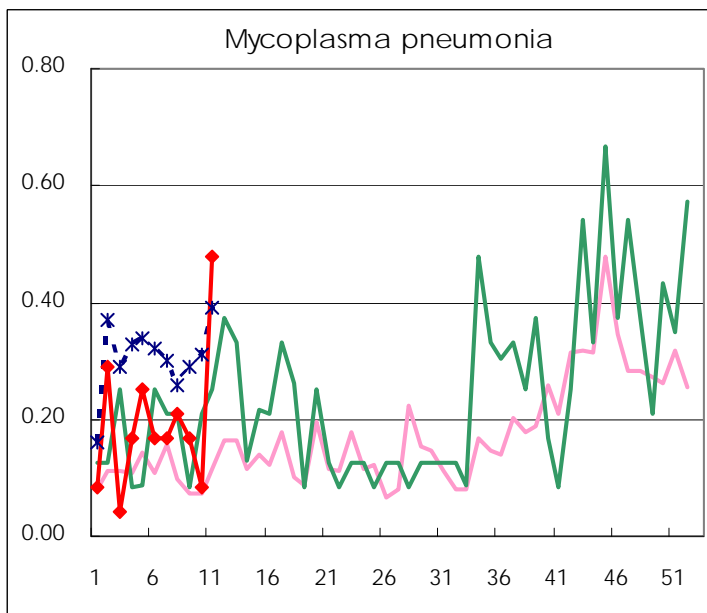
(Blank means 0.)

Disease Trend Graph (weekly reported cases per sentinel in comparison)









Number of sentinel facilities
for weekly reporting

Types of sentinels	Number of sentinels	Sentinels having reported
Pediatric	150	145
Influenza	290	285
Ophthalmic	39	38
Specially-designated	24	23

Tokyo Metropolitan Government
Infectious Disease Surveillance Center