
INFECTIOUS DISEASES WEEKLY REPORT

TOKYO IDWR

Tokyo Metropolitan Infectious Disease Surveillance Center

26 March 2009 / Number 12

Surveillance System in Tokyo, Japan

The infectious diseases which all physicians must report

All physicians must report to health centers the incidence of the diseases which are shown at page one. Health centers electronically report the individual cases to Tokyo Metropolitan Infectious Disease Surveillance Center.

The infectious diseases required to be reported by the sentinels

The numbers of patients who visit the sentinel clinics or hospitals during a week are reported to health centers in Tokyo. And they electronically report the numbers to Tokyo Metropolitan Infectious Disease Surveillance Center. We have about 400 sentinel clinics and hospitals in Tokyo.

1st Week is early January and 52nd Week is end of December.

Tokyo Metropolitan Institute of Public Health
Epidemiological Information Office

TEL:81-3-3363-3213 FAX:81-3-5332-7365

e-mail:idsc@tokyo-eiken.go.jp

URL:idsc.tokyo-eiken.go.jp/

Number of patients with the diseases which all physicians must report

Category	Diseases	Tokyo				Japan	
		9th	10th	11th	12th	Cum 2009	Cum 2009
I	Ebola hemorrhagic fever						
	Crimean-Congo hemorrhagic fever						
	Smallpox						
	South American hemorrhagic fever						
	Plague						
	Marburg disease						
	Lassa fever						
II	Acute poliomyelitis						
	Tuberculosis	69	80	62	40	768	5107
	Diphtheria						
	Severe Acute Respiratory Syndrome(SARS)						
	Avian influenza H5N1						
III	Cholera						2
	Shigellosis	4	2			10	42
	Enterohemorrhagic Escherichia coli infection	2		1	3	11	174
	Typhoid fever		1	2		4	6
	Paratyphoid fever		1		1	2	3
IV	Hepatitis E					3	9
	West Nile fever						
	Hepatitis A	2	1			3	22
	Echinococcosis					1	6
	Yellow fever						
	Psittacosis						1
	Omsk hemorrhagic fever						
	Relapsing fever						
	Kyasanur forest disease						
	Q fever						
	Rabies						
	Coccidioidomycosis					1	1
	Monkeypox						
	Hemorrhagic fever with renal syndrome						
	Western equine encephalitis						
	Tick-borne encephalitis						
	Anthrax						
	Scrub typhus(Tsutsugamushi disease)					2	34
	Dengue fever	1	1			5	18
	Eastern equine encephalitis						
	Avian influenza (excluding H5N1)						
	Nipah virus infection						
	Japanese spotted fever						4
	Japanese encephalitis						
	Epidemic typhus						
	Hantavirus pulmonary syndrome						
	Herpes B virus infection						
	Glanders						
	Brucellosis						
	Venezuelan equine encephalitis						
Hendra virus infection							
Botulism							
Malaria	1		1		8	15	
Tularemia							
Lyme disease							
Lyssavirus infection(excluding rabies)							
Rift valley fever							
Melioidosis							
Legionellosis	1	1	1		15	134	
Leptospirosis						1	
Rocky mountain spotted fever							

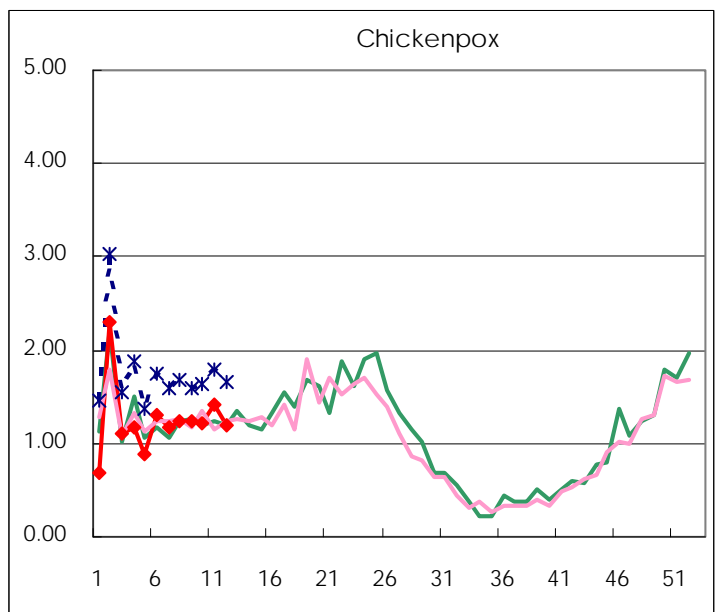
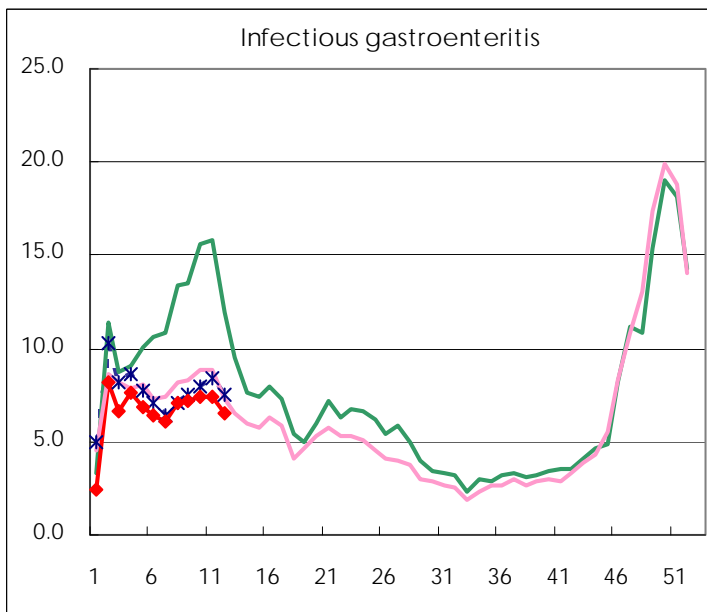
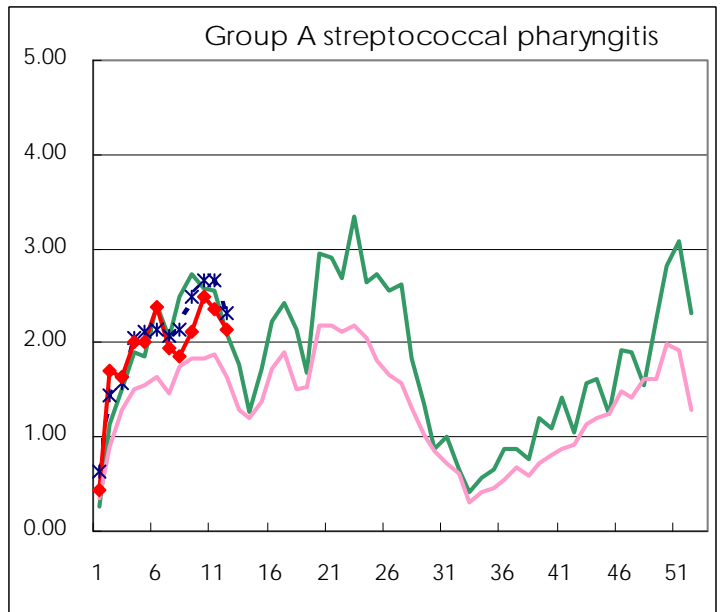
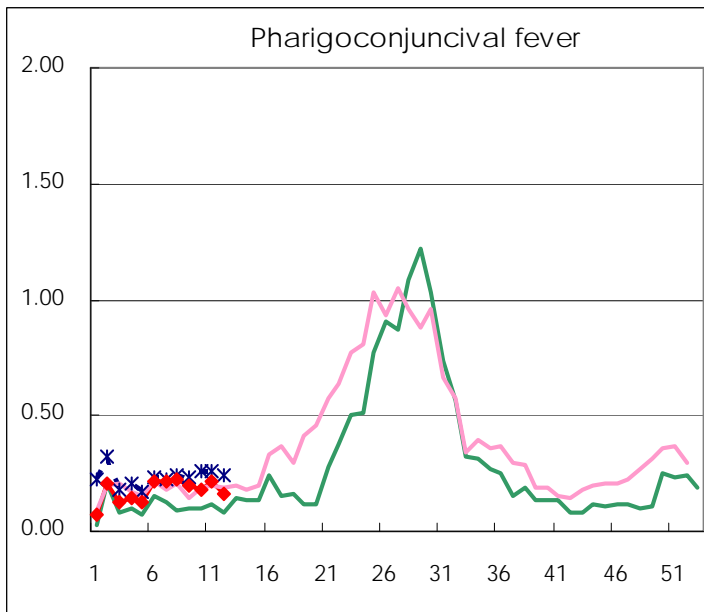
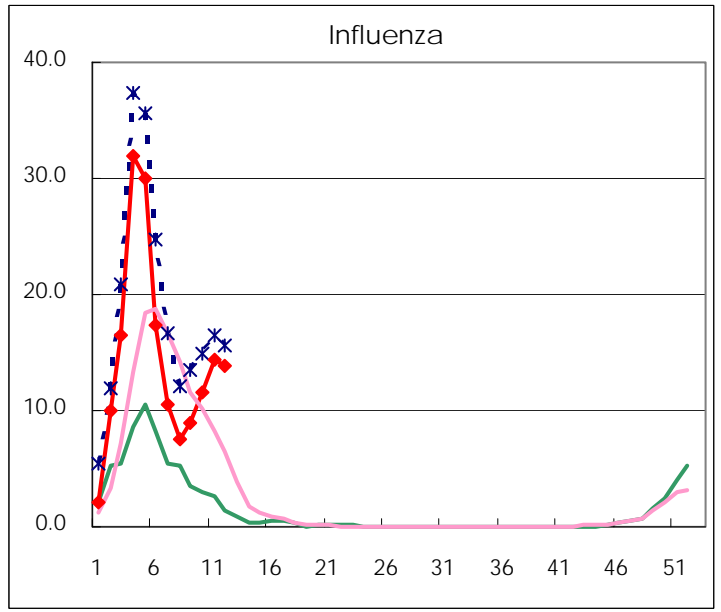
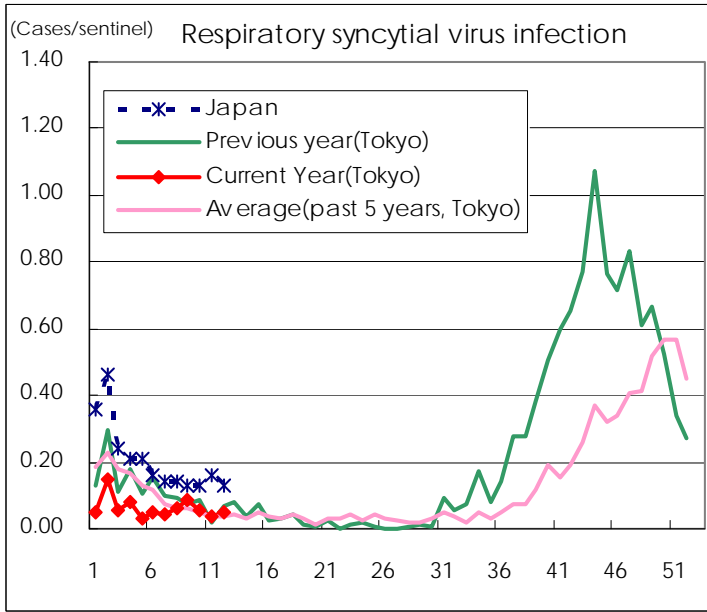
Category	Diseases	Tokyo				Japan		
		9th	10th	11th	12th	Cum 2009	12th	Cum 2009
V	Amebiasis		3	2	2	32	9	198
	Viral hepatitis(excluding hepatitis A and E)	1	1	1		11	1	43
	Acute encephalitis(excluding JE and WNE)		1		1	8	2	62
	Cryptosporidiosis							1
	Creutzfeldt-Jakob disease					3	1	23
	Severe invasive streptococcal infections(TSLS)	1				3	1	25
	Acquired immunodeficiency syndrome (AIDS)	12	16	6	10	119	14	320
	Giardiasis	2	2	1		10	1	15
	Meningococcal meningitis				1	1	1	5
	Congenital rubella syndrome							
	Syphilis	2	6	6	6	50	8	160
	Tetanus					1		12
	Vancomycin-resistant S. aureus infection							
	Vancomycin-resistant Enterococcus infection					1	1	20
	Rubella			1		2	1	44
Measles	2	1	2	2	24	13	182	

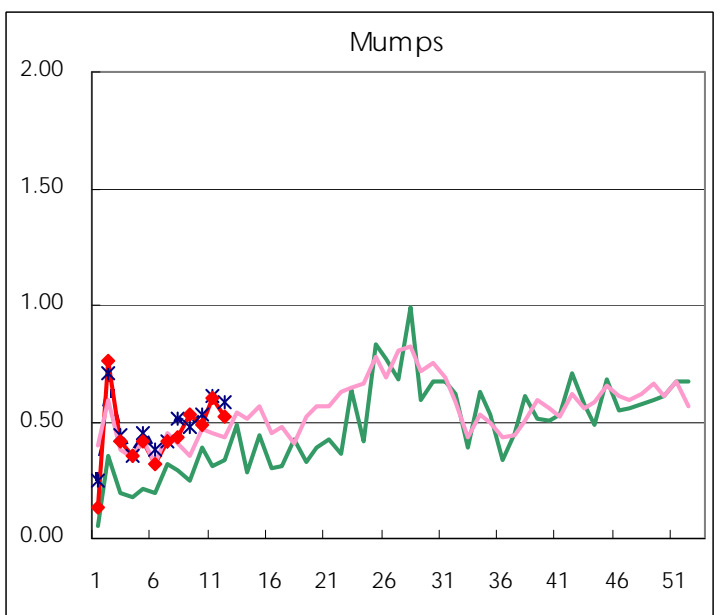
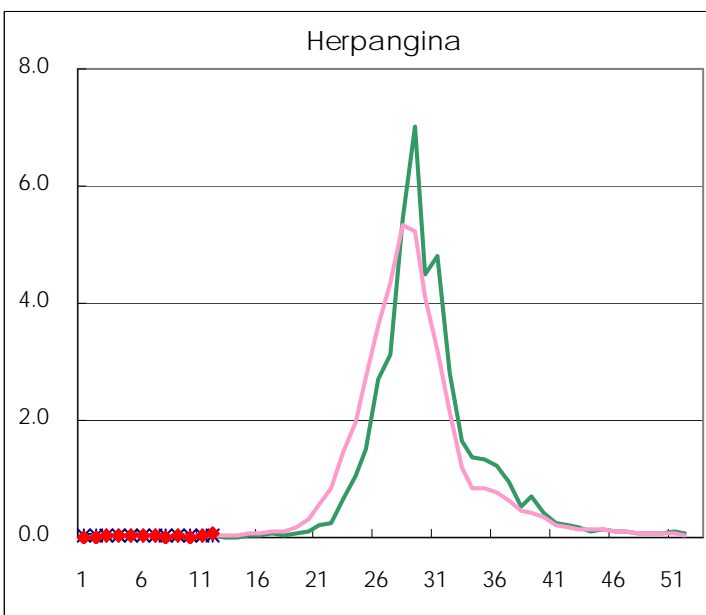
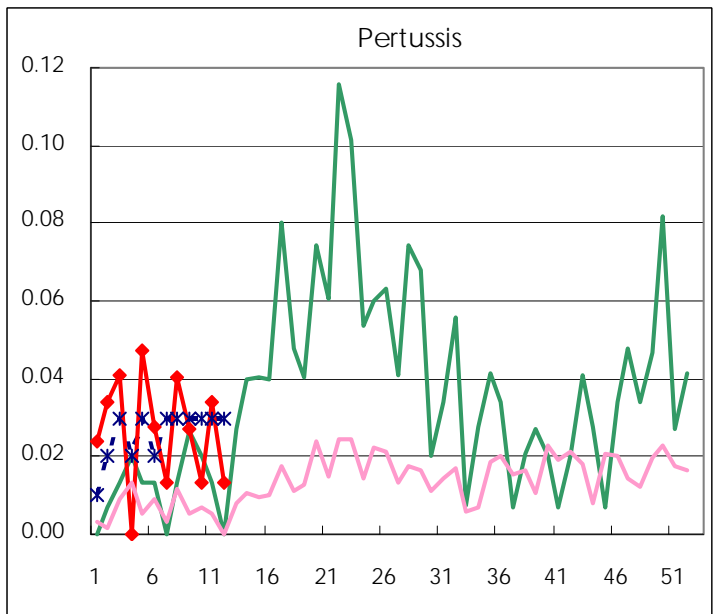
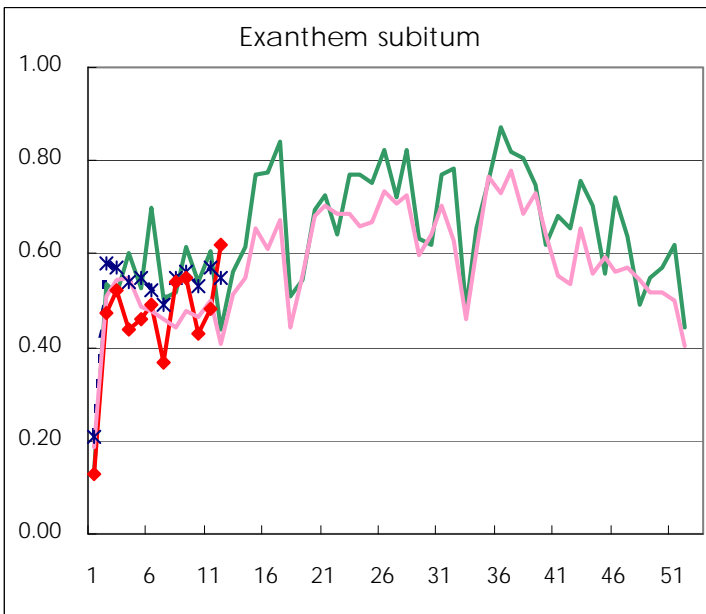
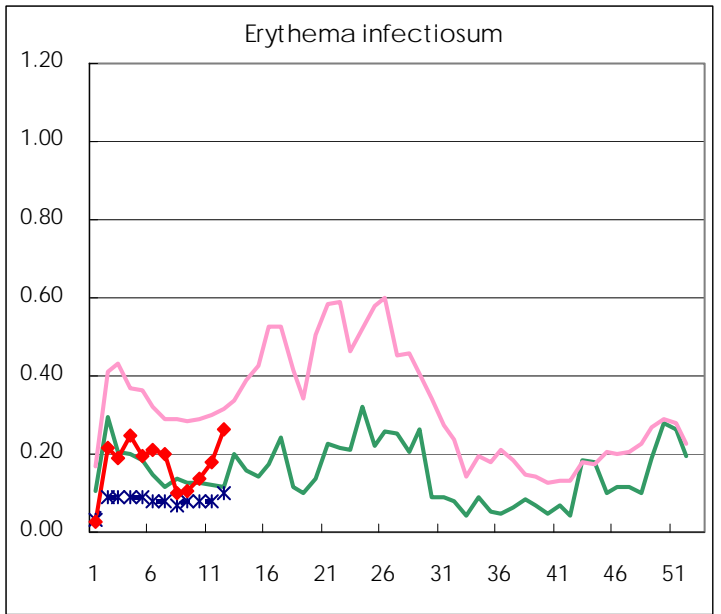
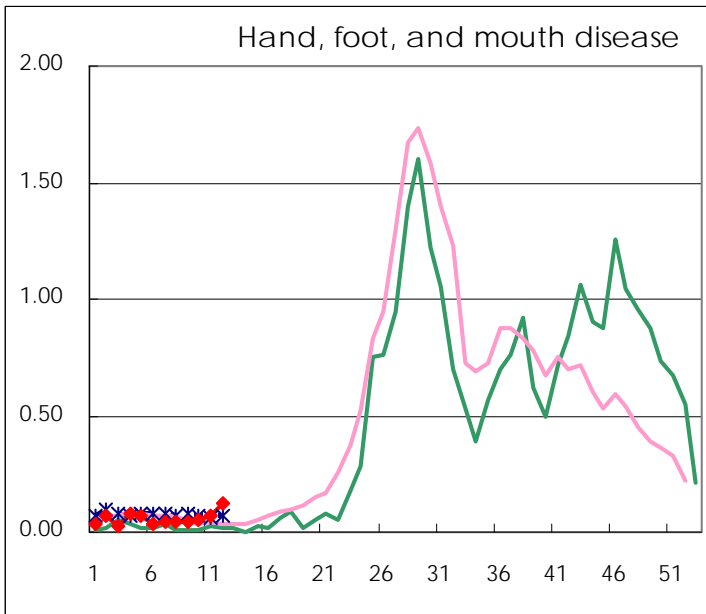
Number of patients with the diseases to be reported
by the designated clinics and hospitals

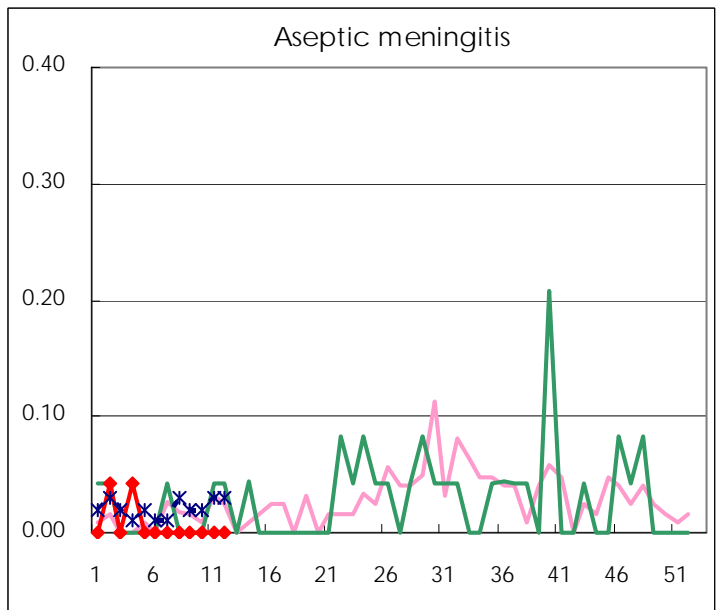
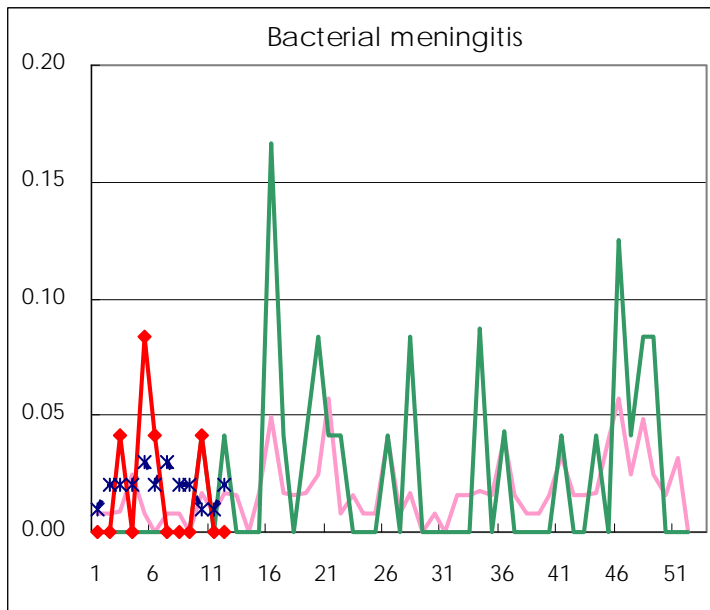
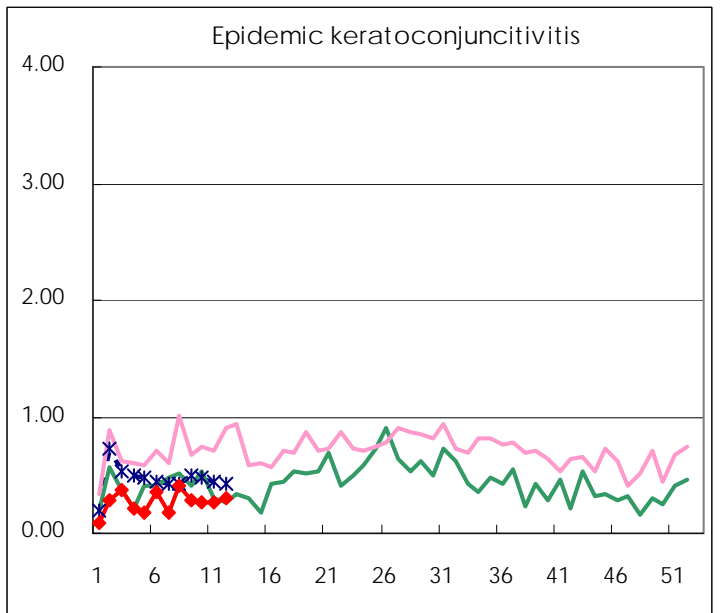
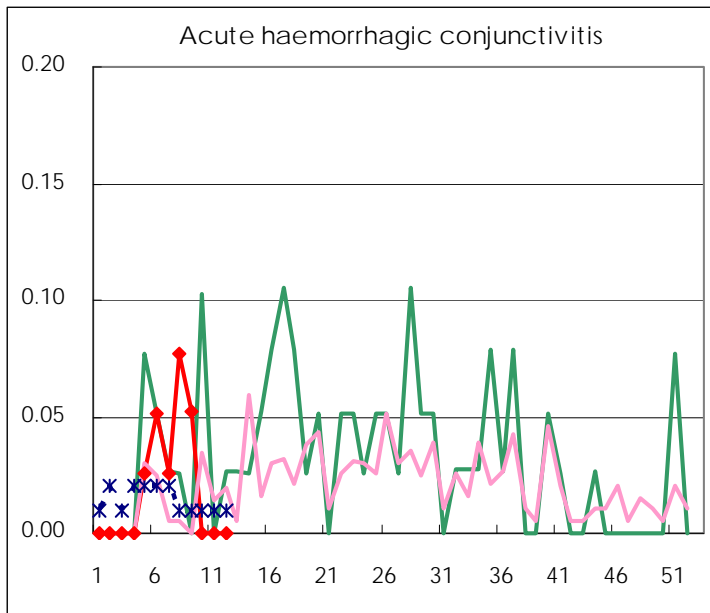
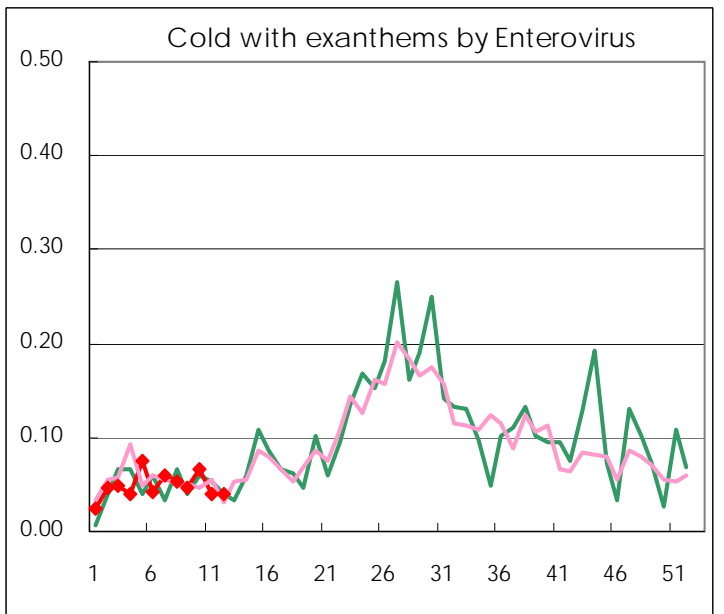
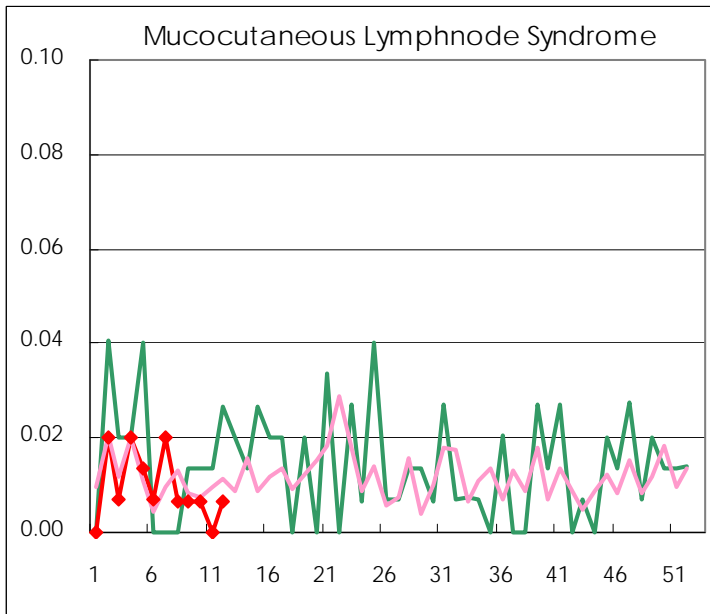
Diseases	2009				
	9th	10th	11th	12th	/sentinel
Respiratory syncytial virus infection	13	8	5	7	0.05
Pharyngoconjunctival fever	30	27	32	24	0.16
Group A streptococcal pharyngitis	317	372	348	317	2.14
Infectious gastroenteritis	1,064	1,102	1,083	967	6.53
Chickenpox	185	181	208	176	1.19
Hand, foot, and mouth disease	6	8	11	18	0.12
Erythema infectiosum	16	20	26	39	0.26
Exanthem subitum	82	64	71	92	0.62
Pertussis	4	2	5	2	0.01
Herpangina	3	1	6	11	0.07
Mumps	79	73	89	77	0.52
Cold with exanthems by Enterovirus	7	10	6	6	0.04
Mucocutaneous Lymphnode Syndrome	1	1		1	0.01
Influenza	2,585	3,328	4,119	3,943	13.79
Acute hemorrhagic conjunctivitis	2				
Epidemic keratoconjunctivitis	11	10	10	11	0.30
Bacterial meningitis		1			
Aseptic meningitis					
Mycoplasma pneumonia	4	2	11	4	0.17
Chlamydial pneumonia (excluding psittacosis)	3	3		1	0.04

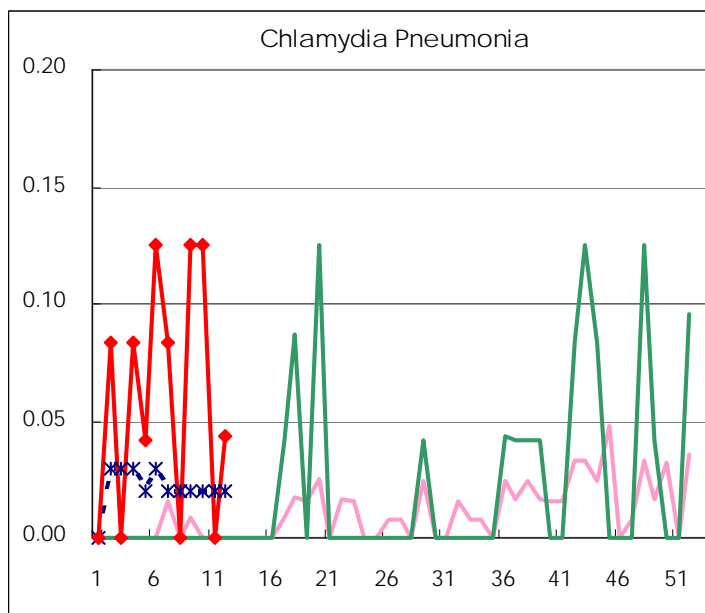
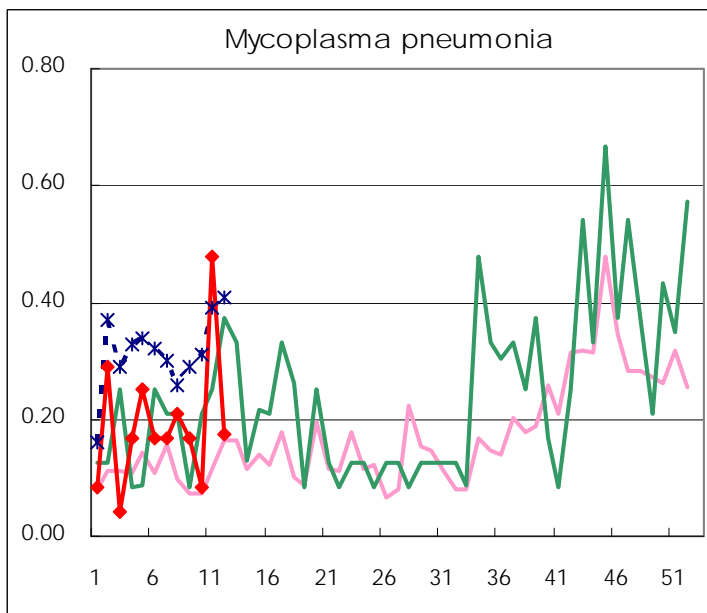
(Blank means 0.)

Disease Trend Graph (weekly reported cases per sentinel in comparison)









Number of sentinel facilities
for weekly reporting

Types of sentinels	Number of sentinels	Sentinels having reported
Pediatric	150	148
Influenza	290	286
Ophthalmic	39	37
Specially-designated	24	23

Tokyo Metropolitan Government
Infectious Disease Surveillance Center