

---

INFECTIOUS DISEASES WEEKLY REPORT

# TOKYO IDWR

Tokyo Metropolitan Infectious Disease Surveillance Center

## 9 April 2009 / Number 14

### Surveillance System in Tokyo, Japan

The infectious diseases which all physicians must report

All physicians must report to health centers the incidence of the diseases which are shown at page one. Health centers electronically report the individual cases to Tokyo Metropolitan Infectious Disease Surveillance Center.

The infectious diseases required to be reported by the sentinels

The numbers of patients who visit the sentinel clinics or hospitals during a week are reported to health centers in Tokyo. And they electronically report the numbers to Tokyo Metropolitan Infectious Disease Surveillance Center. We have about 400 sentinel clinics and hospitals in Tokyo.

1st Week is early January and 52nd Week is end of December.

Tokyo Metropolitan Institute of Public Health  
Epidemiological Information Office

TEL:81-3-3363-3213 FAX:81-3-5332-7365

e-mail:[idsc@tokyo-eiken.go.jp](mailto:idsc@tokyo-eiken.go.jp)

URL:[idsc.tokyo-eiken.go.jp/](http://idsc.tokyo-eiken.go.jp/)

---

## Number of patients with the diseases which all physicians must report

Category	Diseases	Tokyo				Cum 2009	Japan	
		11th	12th	13th	14th		14th	Cum 2009
I	Ebola hemorrhagic fever							
	Crimean-Congo hemorrhagic fever							
	Smallpox							
	South American hemorrhagic fever							
	Plague							
	Marburg disease							
	Lassa fever							
II	Acute poliomyelitis							
	Tuberculosis	75	56	80	56	964	280	6059
	Diphtheria							
	Severe Acute Respiratory Syndrome(SARS)							
	Avian influenza H5N1							
III	Cholera							2
	Shigellosis					10	5	49
	Enterohemorrhagic Escherichia coli infection	1	3		1	12	26	220
	Typhoid fever	2			1	5	1	7
	Paratyphoid fever		1			2	1	4
IV	Hepatitis E					3		12
	West Nile fever							
	Hepatitis A					3	2	25
	Echinococcosis					1		6
	Yellow fever							
	Psittacosis							1
	Omsk hemorrhagic fever							
	Relapsing fever							
	Kyasanur forest disease							
	Q fever							
	Rabies							
	Coccidioidomycosis					1		1
	Monkeypox							
	Hemorrhagic fever with renal syndrome							
	Western equine encephalitis							
	Tick-borne encephalitis							
	Anthrax							
	Scrub typhus(Tsutsugamushi disease)					2		36
	Dengue fever					5		18
	Eastern equine encephalitis							
	Avian influenza (excluding H5N1)							
	Nipah virus infection							
	Japanese spotted fever						1	5
	Japanese encephalitis							
	Epidemic typhus							
	Hantavirus pulmonary syndrome							
	Herpes B virus infection							
	Glanders							
	Brucellosis							
	Venezuelan equine encephalitis							
Hendra virus infection								
Botulism								
Malaria	1				8	2	18	
Tularemia								
Lyme disease								
Lyssavirus infection(excluding rabies)								
Rift valley fever								
Melioidosis								
Legionellosis	1			1	16	6	156	
Leptospirosis							1	
Rocky mountain spotted fever								

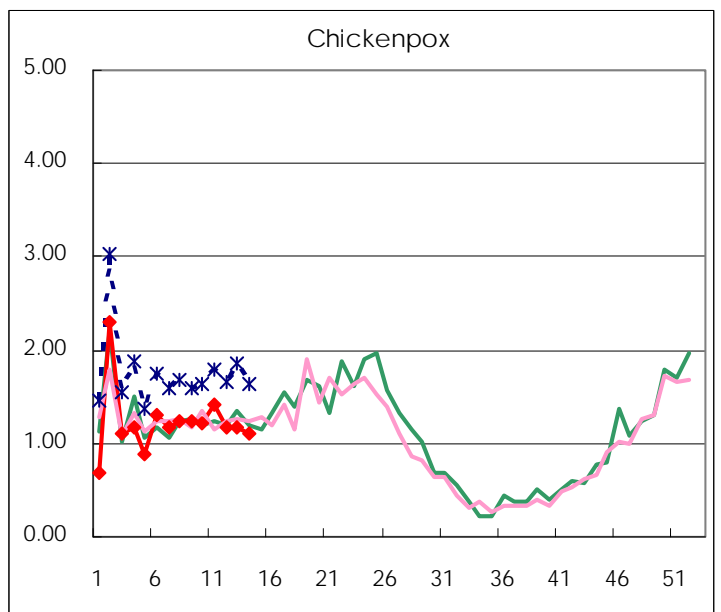
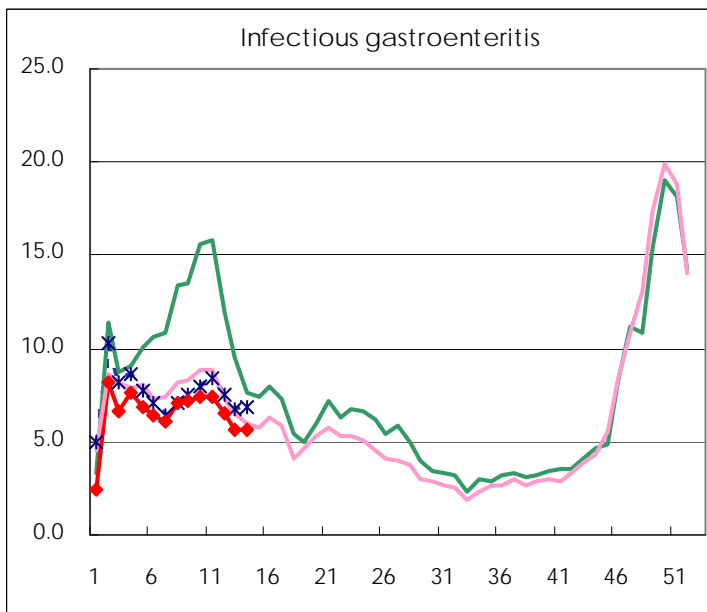
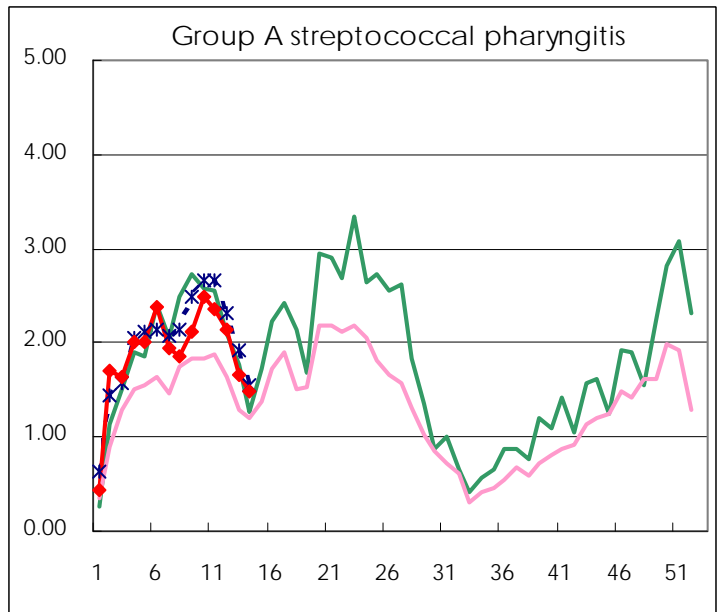
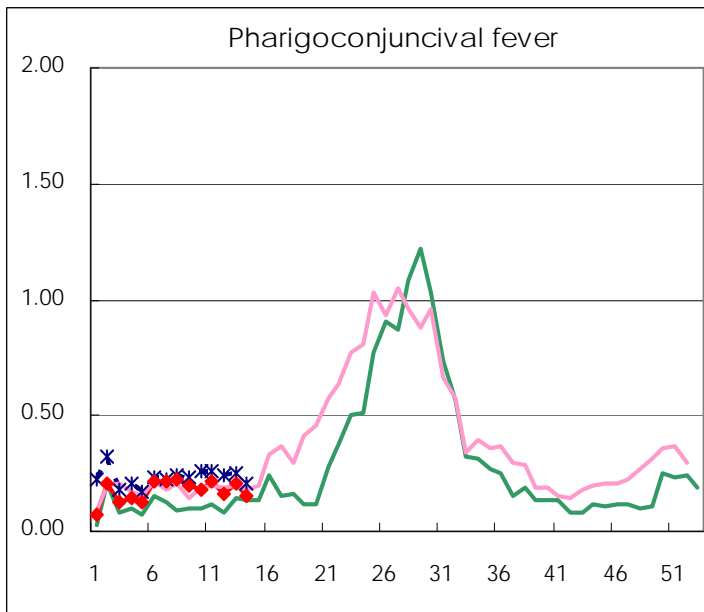
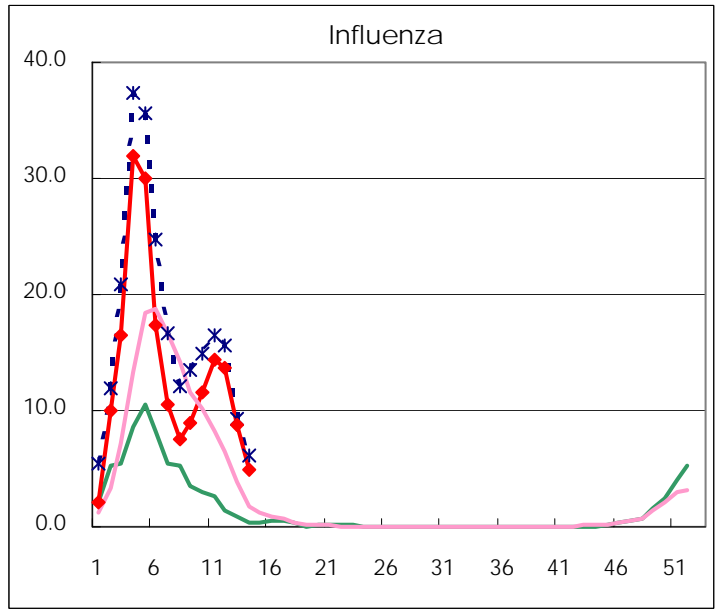
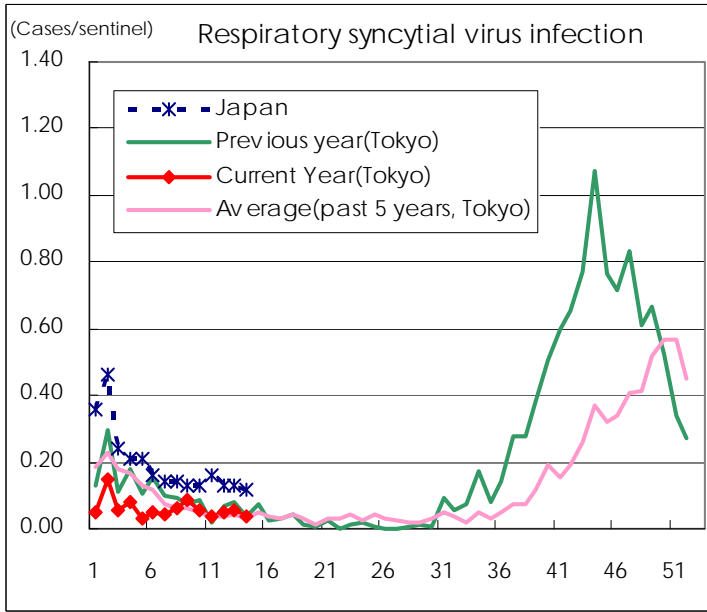
Category	Diseases	Tokyo					Japan	
		11th	12th	13th	14th	Cum 2009	14th	Cum 2009
V	Amebiasis	2	2	3	2	37	3	222
	Viral hepatitis(excluding hepatitis A and E)	1		2	1	14	3	48
	Acute encephalitis(excluding JE and WNE)		1			8	1	68
	Cryptosporidiosis				1	1		1
	Creutzfeldt-Jakob disease					3		25
	Severe invasive streptococcal infections(TSLS)					3	1	32
	Acquired immunodeficiency syndrome (AIDS)	6	10	9	8	136	16	373
	Giardiasis	1				10	2	17
	Meningococcal meningitis						1	6
	Congenital rubella syndrome							
	Syphilis	6	6	3	5	58	6	191
	Tetanus					1	1	14
	Vancomycin-resistant S. aureus infection							
	Vancomycin-resistant Enterococcus infection					1	1	23
	Rubella	1				2	2	48
Measles	2	2	2	3	29	14	208	

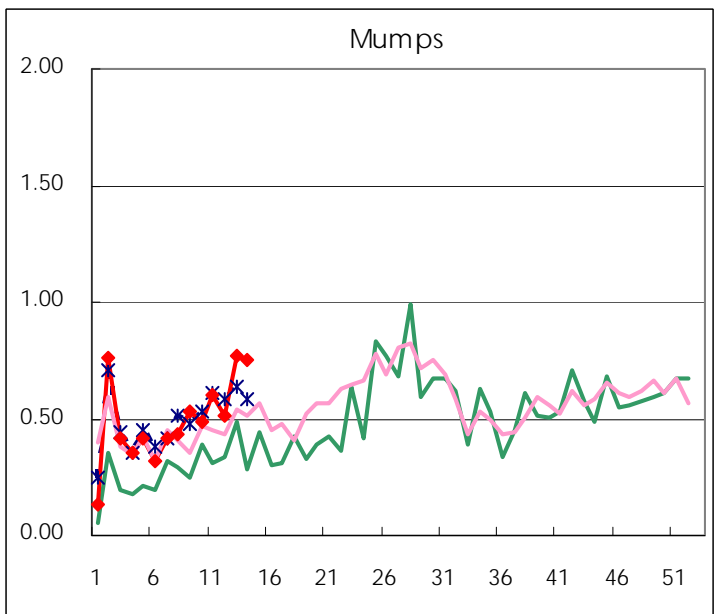
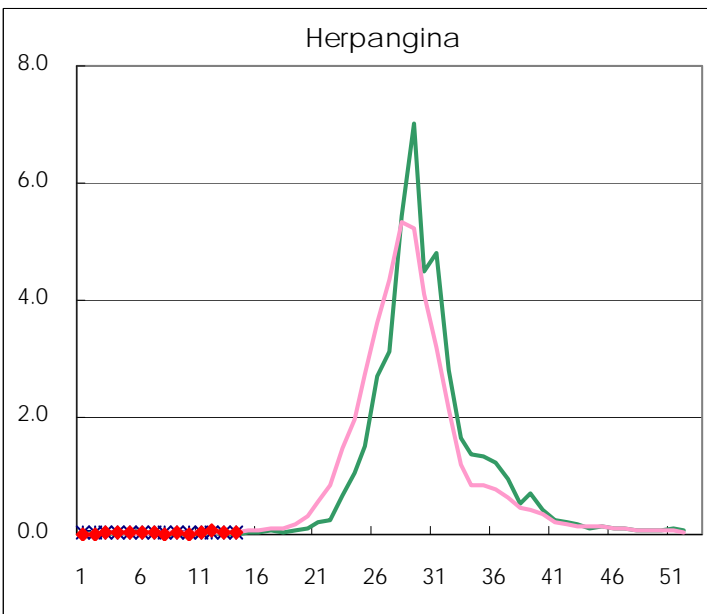
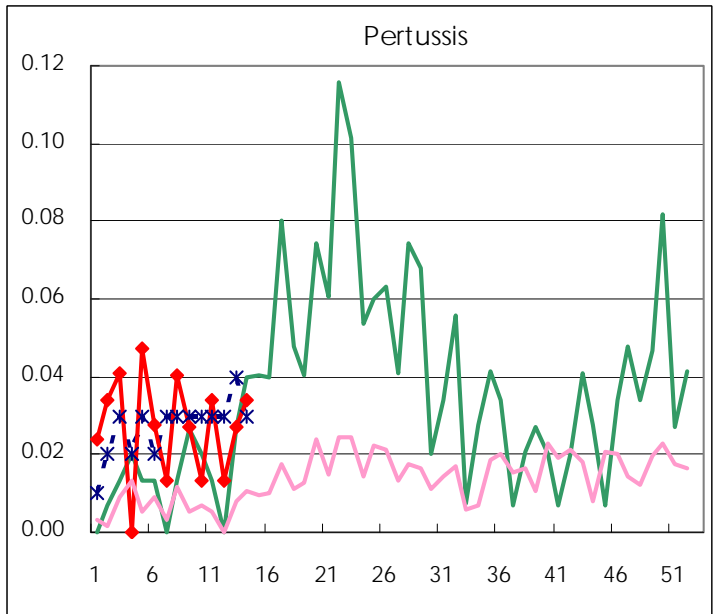
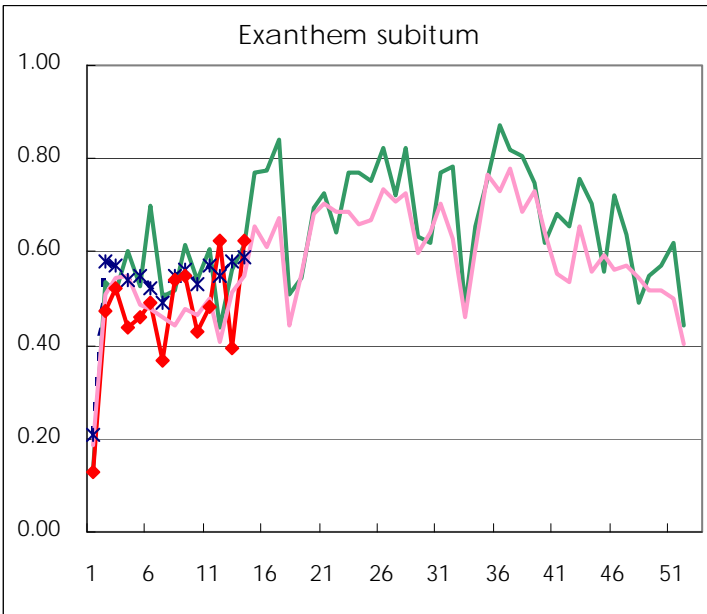
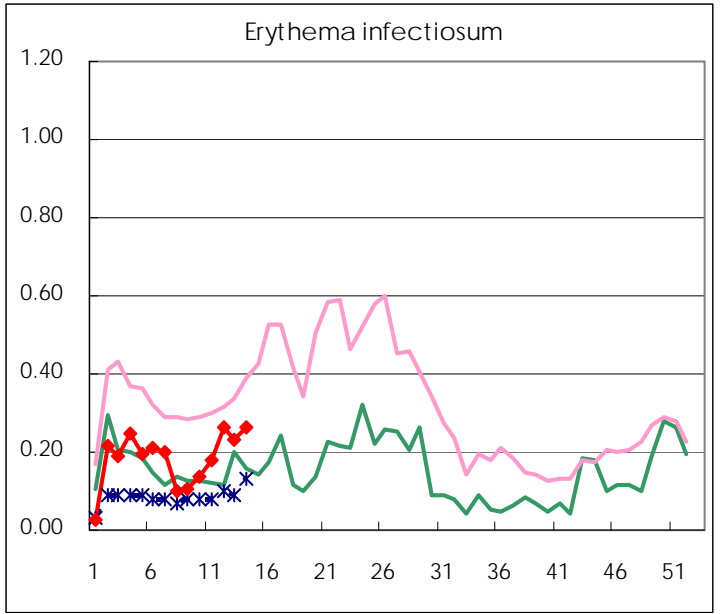
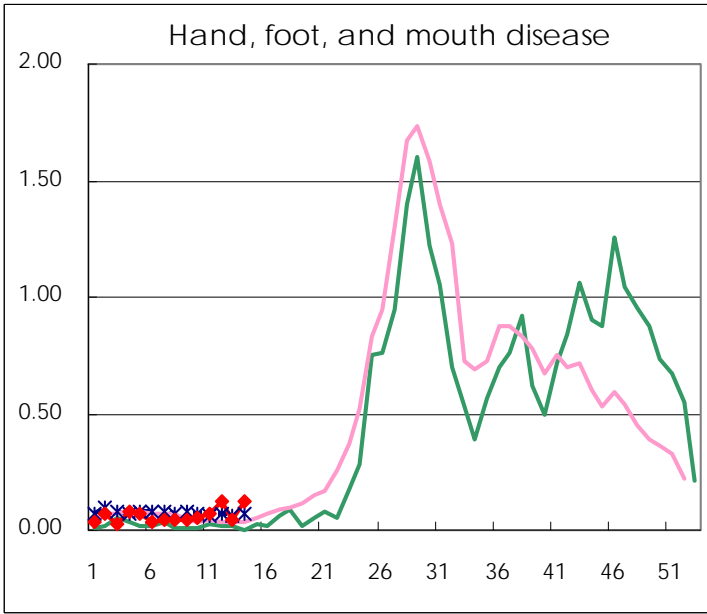
Number of patients with the diseases to be reported  
by the designated clinics and hospitals

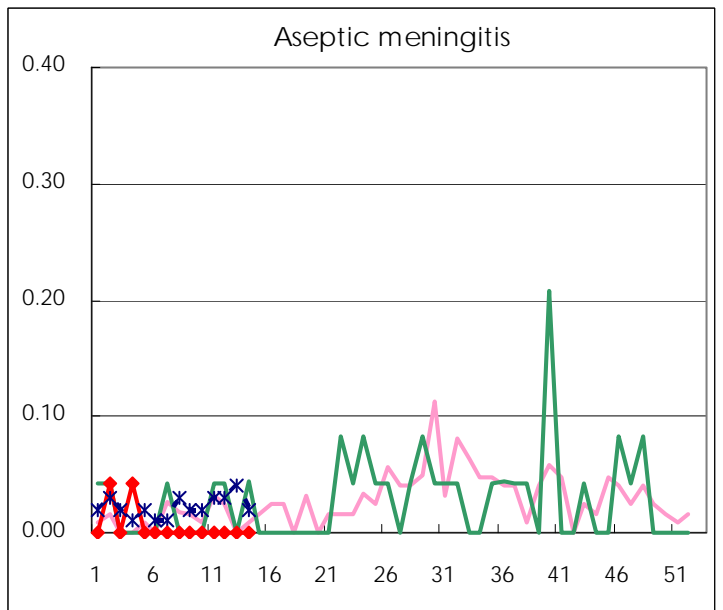
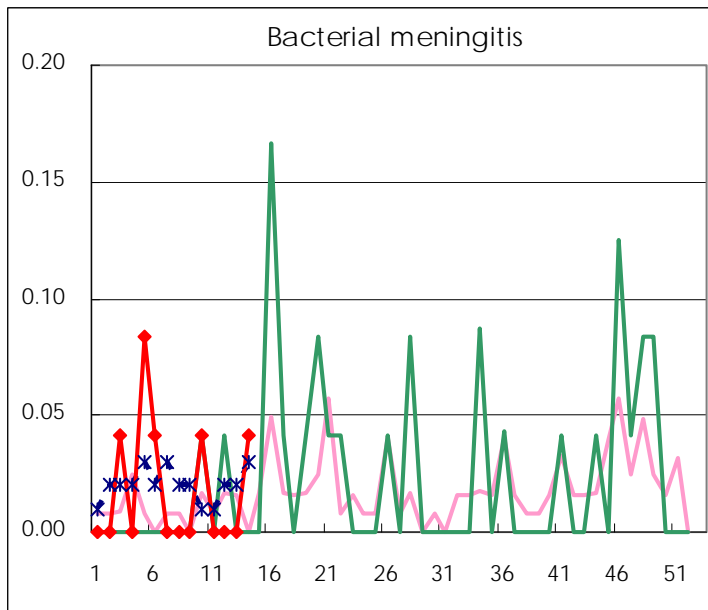
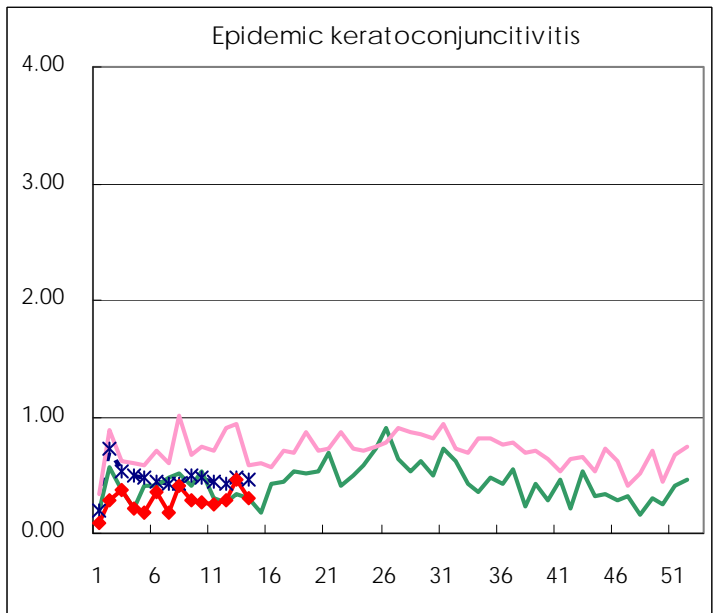
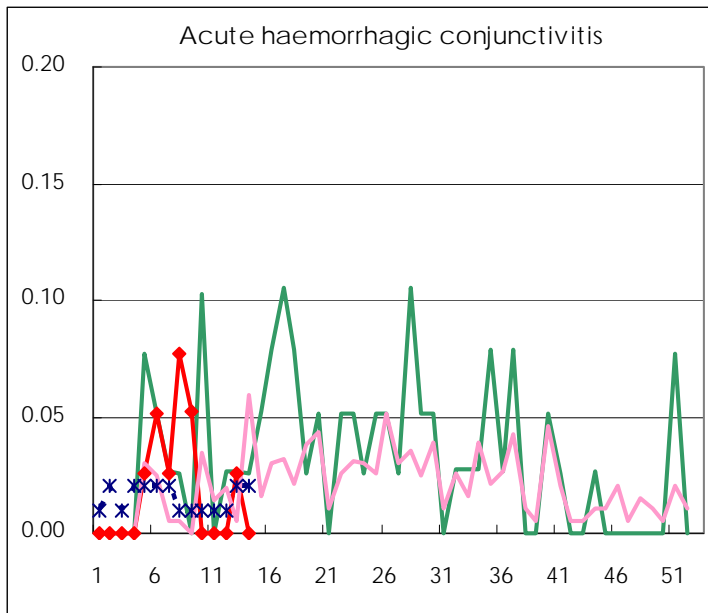
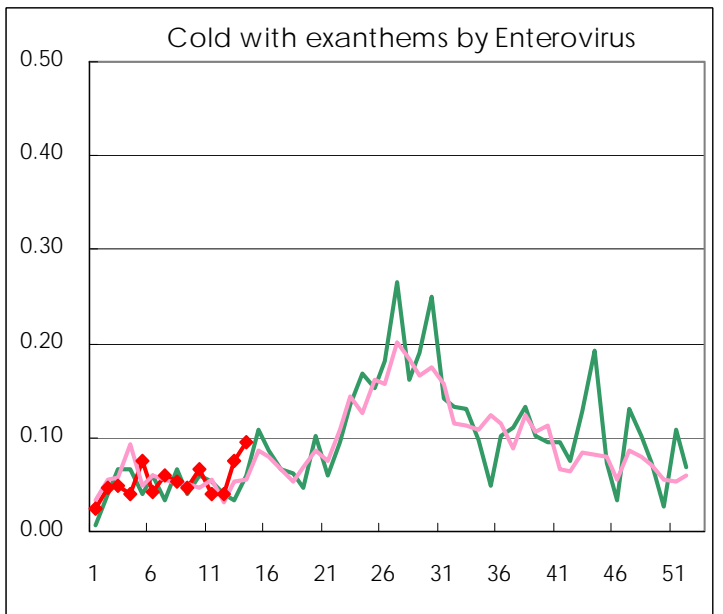
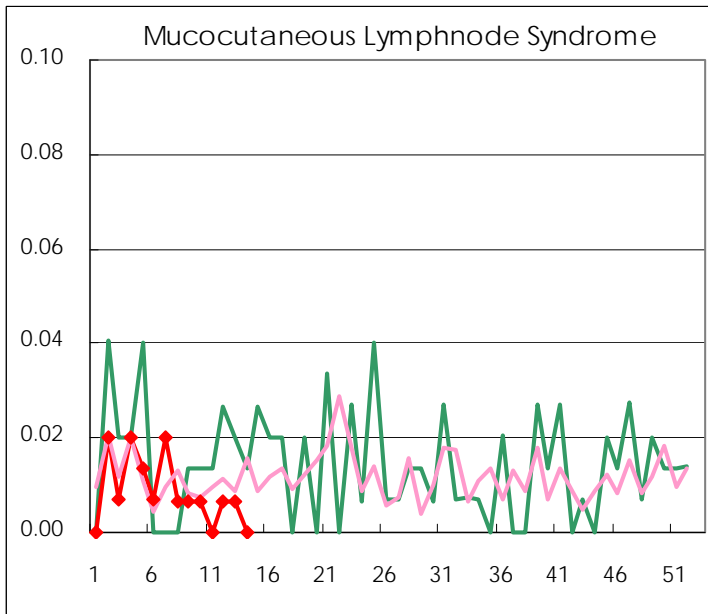
Diseases	2009					
	11th	12th	13th	14th	/sentinel	
Respiratory syncytial virus infection	5	7	8	5	0.03	
Pharyngoconjunctival fever	32	24	30	23	0.16	
Group A streptococcal pharyngitis	348	319	247	218	1.48	
Infectious gastroenteritis	1,083	972	828	833	5.67	
Chickenpox	208	176	174	161	1.10	
Hand, foot, and mouth disease	11	18	7	18	0.12	
Erythema infectiosum	26	39	34	39	0.27	
Exanthem subitum	71	93	58	92	0.63	
Pertussis	5	2	4	5	0.03	
Herpangina	6	11	3	7	0.05	
Mumps	89	77	114	111	0.76	
Cold with exanthems by Enterovirus	6	6	11	14	0.10	
Mucocutaneous Lymphnode Syndrome		1	1			
Influenza	4,119	3,946	2,499	1,429	4.98	
Acute hemorrhagic conjunctivitis			1			
Epidemic keratoconjunctivitis	10	11	18	12	0.31	
Bacterial meningitis				1	0.04	
Aseptic meningitis						
Mycoplasma pneumonia	11	4	7	13	0.54	
Chlamydial pneumonia (excluding psittacosis)		1	1			

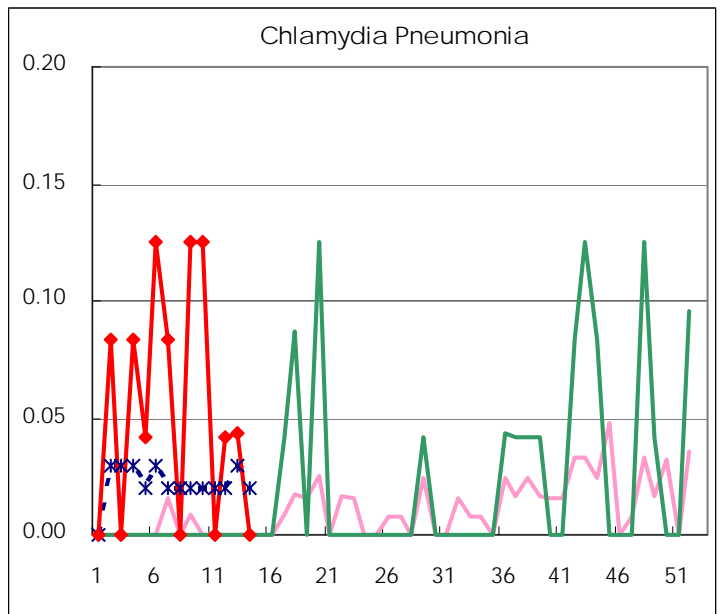
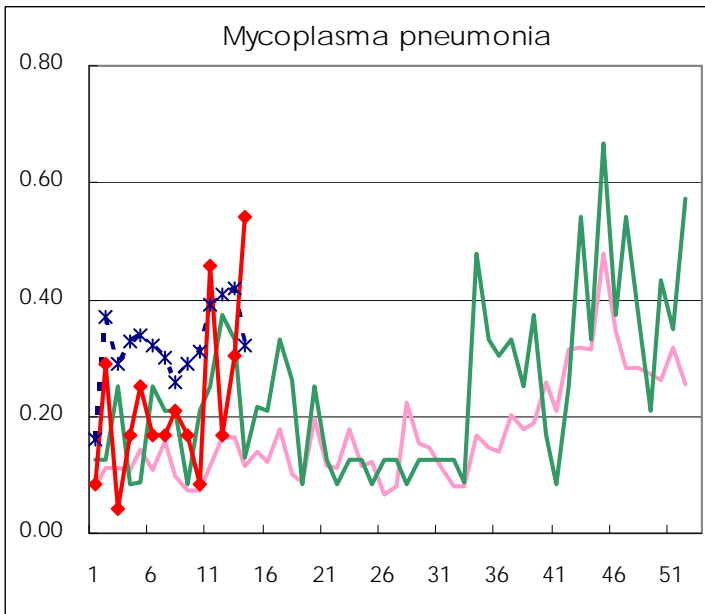
( Blank means 0. )

# Disease Trend Graph (weekly reported cases per sentinel in comparison)









Number of sentinel facilities  
for weekly reporting

Types of sentinels	Number of sentinels	Sentinels having reported
Pediatric	150	147
Influenza	290	287
Ophthalmic	39	39
Specially-designated	24	24

Tokyo Metropolitan Government  
Infectious Disease Surveillance Center