

---

INFECTIOUS DISEASES WEEKLY REPORT

# TOKYO IDWR

Tokyo Metropolitan Infectious Disease Surveillance Center

## 16 April 2009 / Number 15

### Surveillance System in Tokyo, Japan

The infectious diseases which all physicians must report

All physicians must report to health centers the incidence of the diseases which are shown at page one. Health centers electronically report the individual cases to Tokyo Metropolitan Infectious Disease Surveillance Center.

The infectious diseases required to be reported by the sentinels

The numbers of patients who visit the sentinel clinics or hospitals during a week are reported to health centers in Tokyo. And they electronically report the numbers to Tokyo Metropolitan Infectious Disease Surveillance Center. We have about 400 sentinel clinics and hospitals in Tokyo.

1st Week is early January and 52nd Week is end of December.

Tokyo Metropolitan Institute of Public Health  
Epidemiological Information Office

TEL:81-3-3363-3213 FAX:81-3-5332-7365

e-mail:[idsc@tokyo-eiken.go.jp](mailto:idsc@tokyo-eiken.go.jp)

URL:[idsc.tokyo-eiken.go.jp/](http://idsc.tokyo-eiken.go.jp/)

---

## Number of patients with the diseases which all physicians must report

Category	Diseases	Tokyo				Cum 2009	Japan	
		12th	13th	14th	15th		15th	Cum 2009
I	Ebola hemorrhagic fever							
	Crimean-Congo hemorrhagic fever							
	Smallpox							
	South American hemorrhagic fever							
	Plague							
	Marburg disease							
	Lassa fever							
II	Acute poliomyelitis							
	Tuberculosis	57	82	66	50	1027	331	6622
	Diphtheria							
	Severe Acute Respiratory Syndrome(SARS)							
	Avian influenza H5N1							
III	Cholera							2
	Shigellosis					10	4	53
	Enterohemorrhagic Escherichia coli infection	3		1	1	13	16	242
	Typhoid fever			1	1	6	2	9
	Paratyphoid fever	1				2	1	5
IV	Hepatitis E					3	1	12
	West Nile fever							
	Hepatitis A					3	1	26
	Echinococcosis					1	1	7
	Yellow fever							
	Psittacosis							1
	Omsk hemorrhagic fever							
	Relapsing fever							
	Kyasanur forest disease							
	Q fever							
	Rabies							
	Coccidioidomycosis					1		1
	Monkeypox							
	Hemorrhagic fever with renal syndrome							
	Western equine encephalitis							
	Tick-borne encephalitis							
	Anthrax							
	Scrub typhus(Tsutsugamushi disease)					2		37
	Dengue fever					5		18
	Eastern equine encephalitis							
	Avian influenza (excluding H5N1)							
	Nipah virus infection							
	Japanese spotted fever							5
	Japanese encephalitis							
	Epidemic typhus							
	Hantavirus pulmonary syndrome							
	Herpes B virus infection							
	Glanders						1	1
	Brucellosis							
	Venezuelan equine encephalitis							
Hendra virus infection								
Botulism								
Malaria				3	11	2	21	
Tularemia								
Lyme disease								
Lyssavirus infection(excluding rabies)								
Rift valley fever								
Melioidosis								
Legionellosis			1	1	17	8	165	
Leptospirosis						1	2	
Rocky mountain spotted fever								

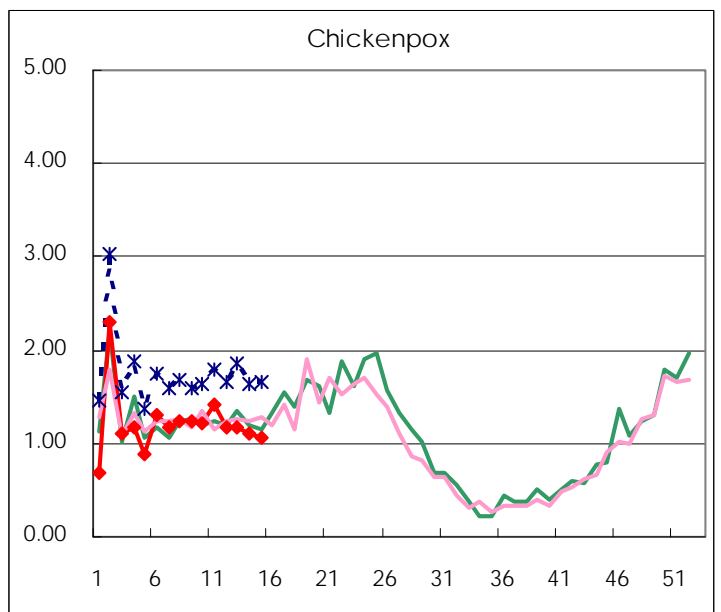
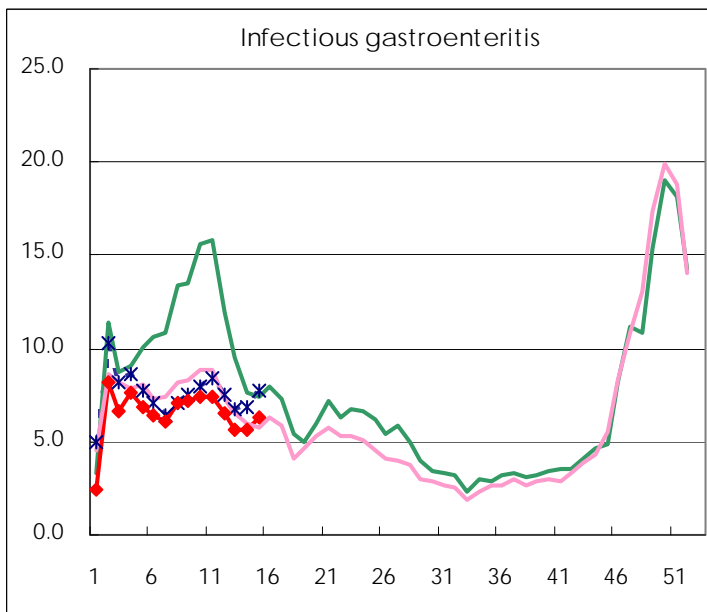
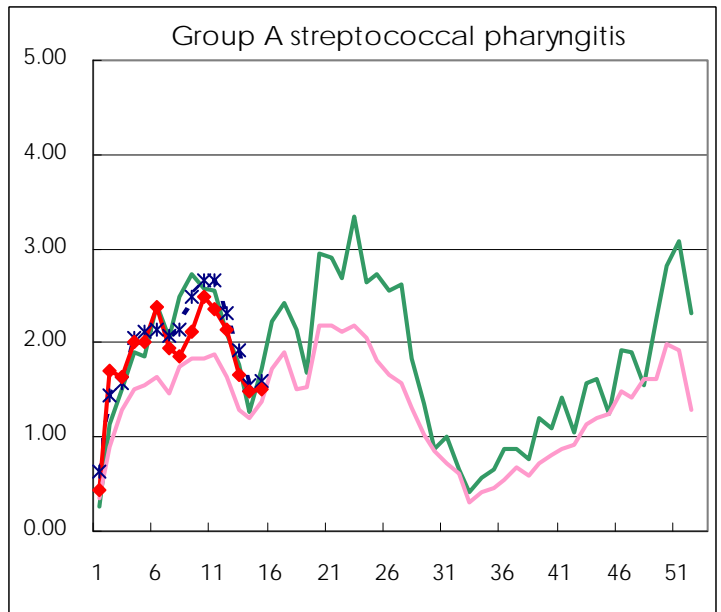
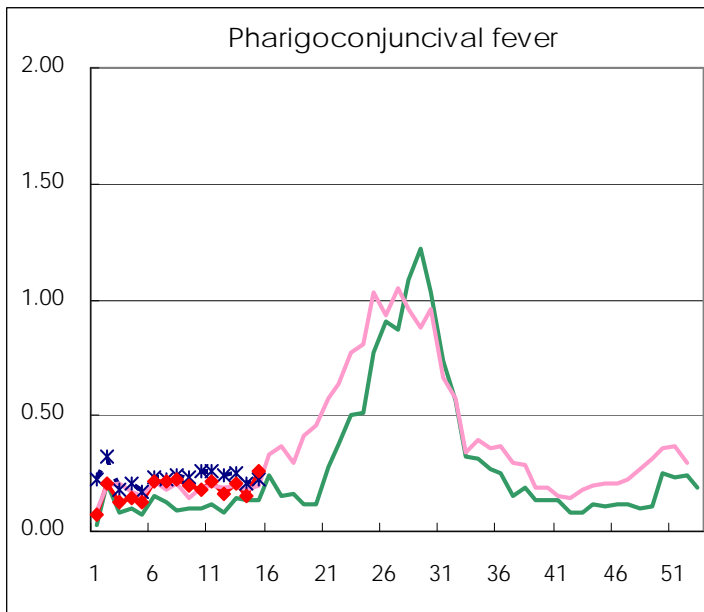
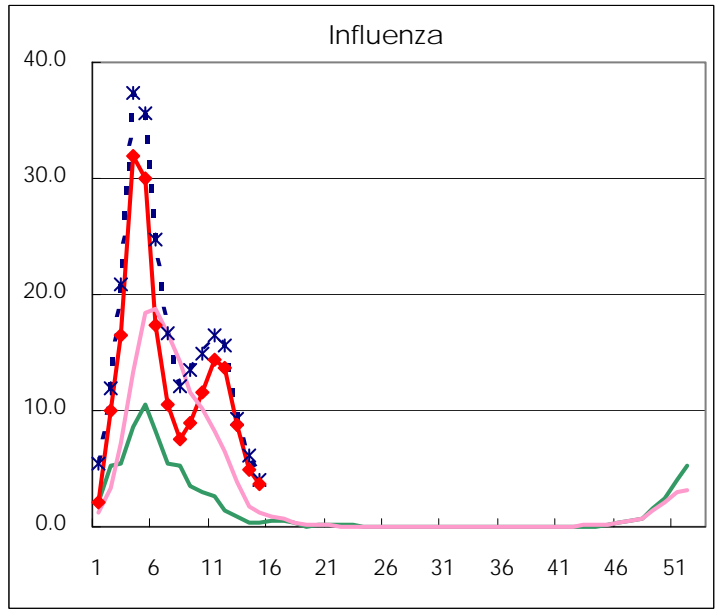
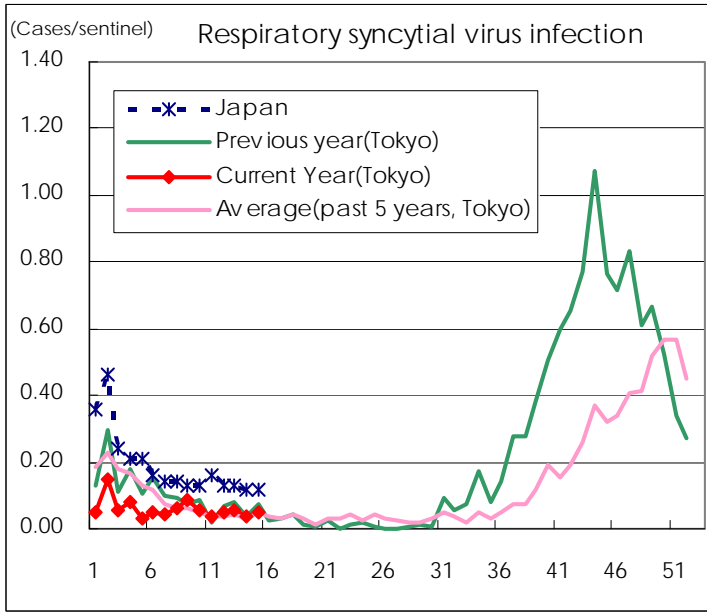
Category	Diseases	Tokyo					Japan	
		12th	13th	14th	15th	Cum 2009	15th	Cum 2009
V	Amebiasis	2	3	2	4	41	8	240
	Viral hepatitis(excluding hepatitis A and E)		2	1	1	15	1	54
	Acute encephalitis(excluding JE and WNE)	1				8	4	76
	Cryptosporidiosis			1		1		1
	Creutzfeldt-Jakob disease					3	1	28
	Severe invasive streptococcal infections(TSLS)					3	1	34
	Acquired immunodeficiency syndrome (AIDS)	10	9	10	8	146	18	413
	Giardiasis				3	13	2	22
	Meningococcal meningitis						1	6
	Congenital rubella syndrome							
	Syphilis	6	3	5	3	61	2	203
	Tetanus					1	1	16
	Vancomycin-resistant S. aureus infection							
	Vancomycin-resistant Enterococcus infection					1	1	25
	Rubella					2	5	56
Measles	2	2	3		29	16	231	

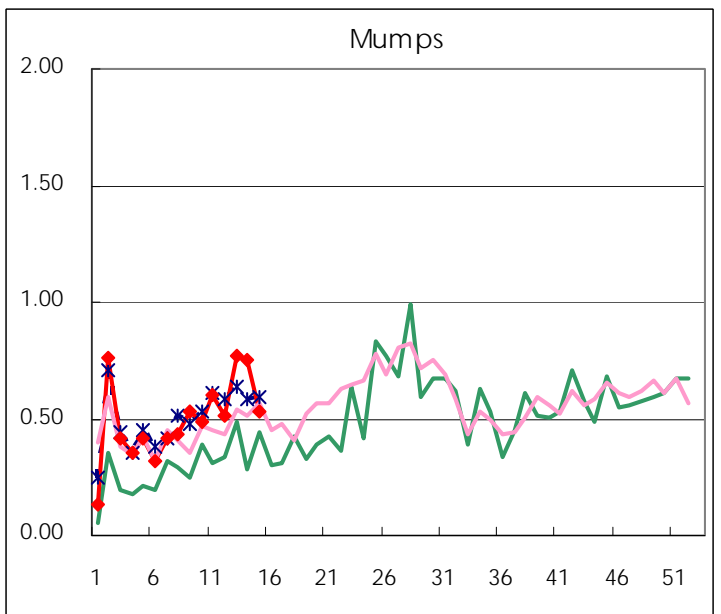
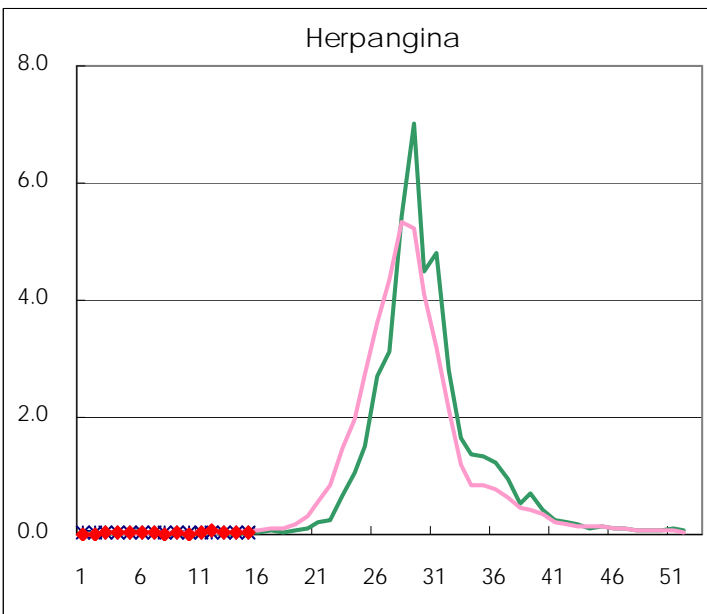
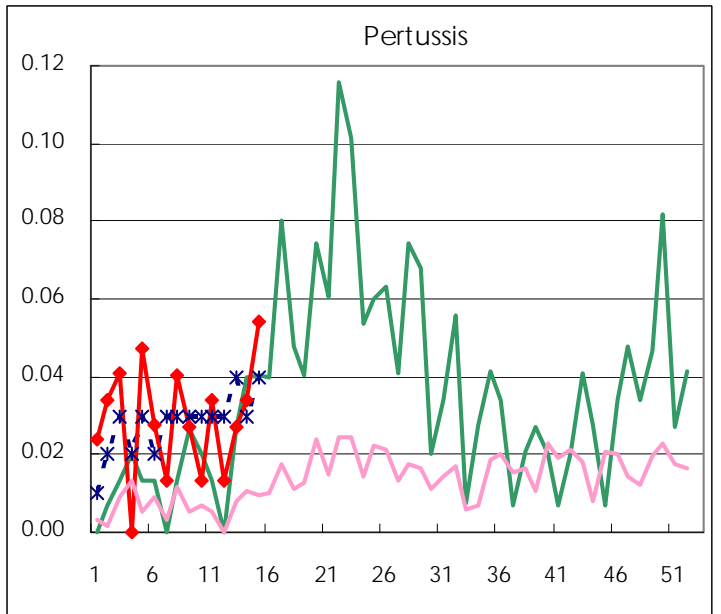
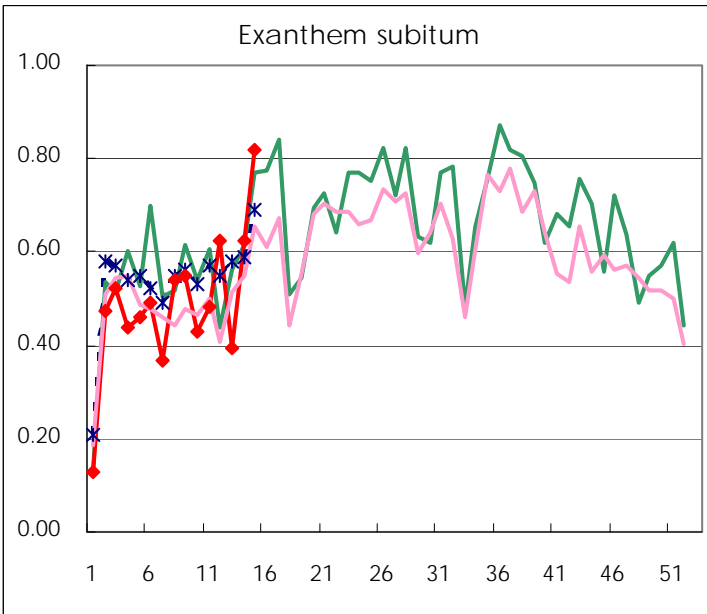
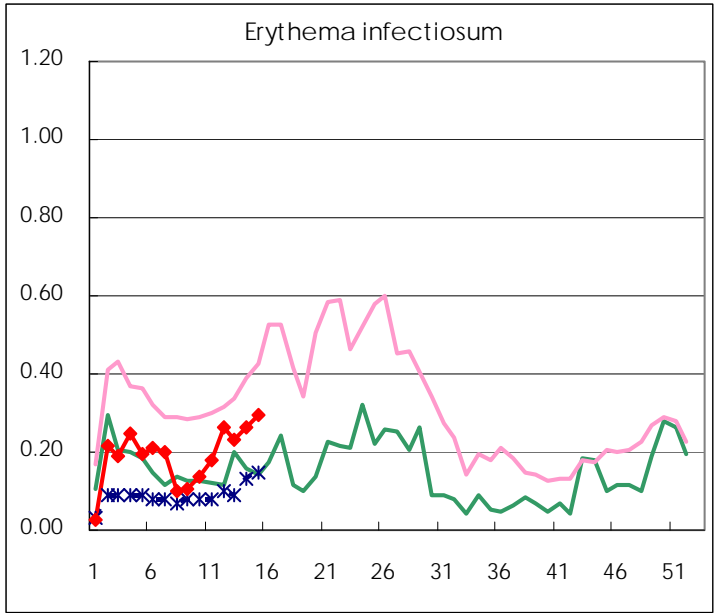
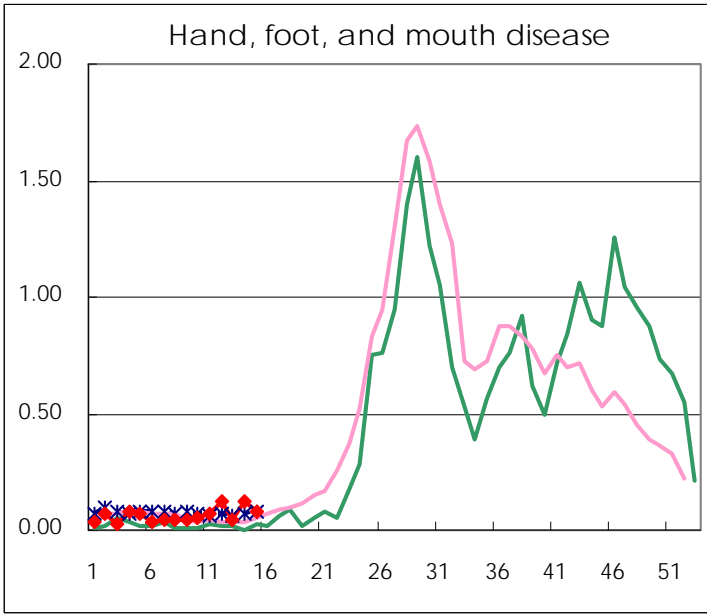
Number of patients with the diseases to be reported  
by the designated clinics and hospitals

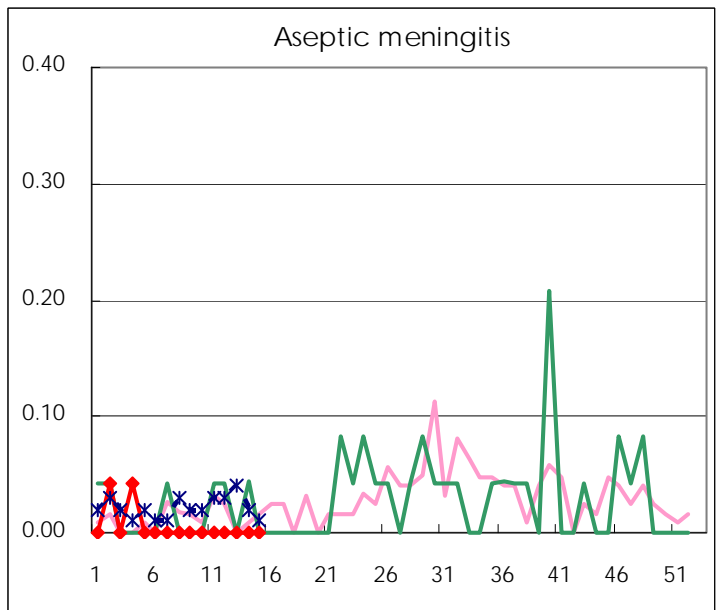
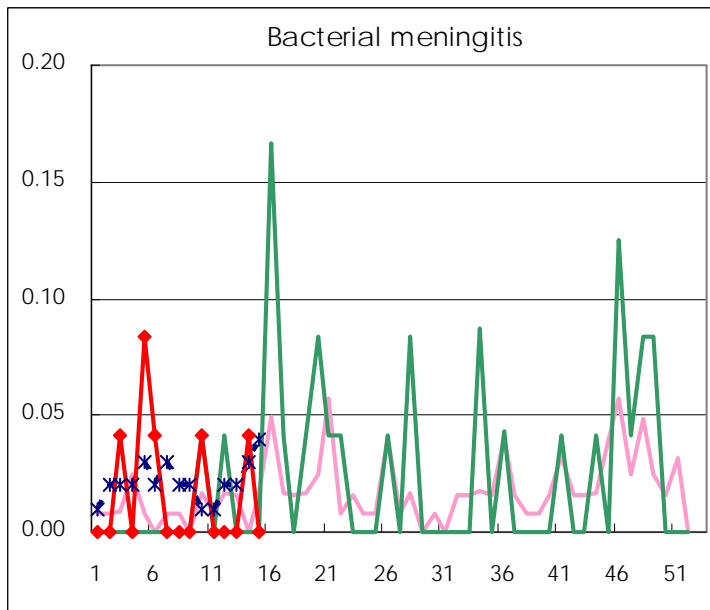
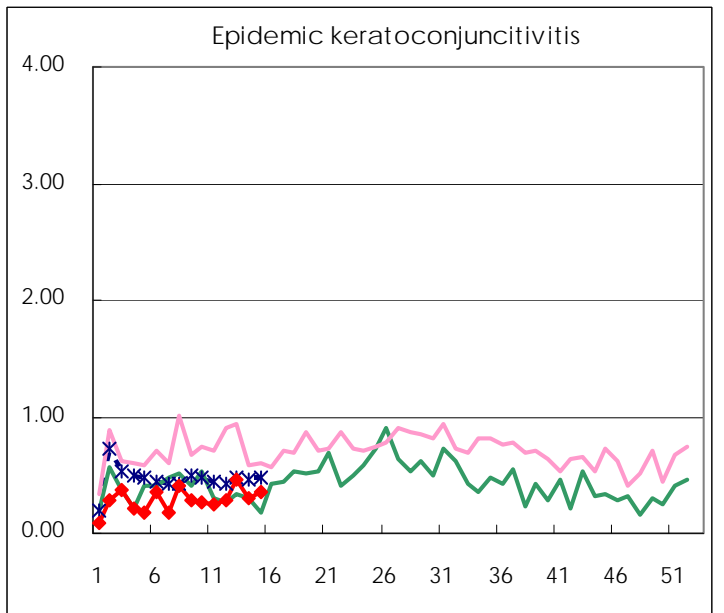
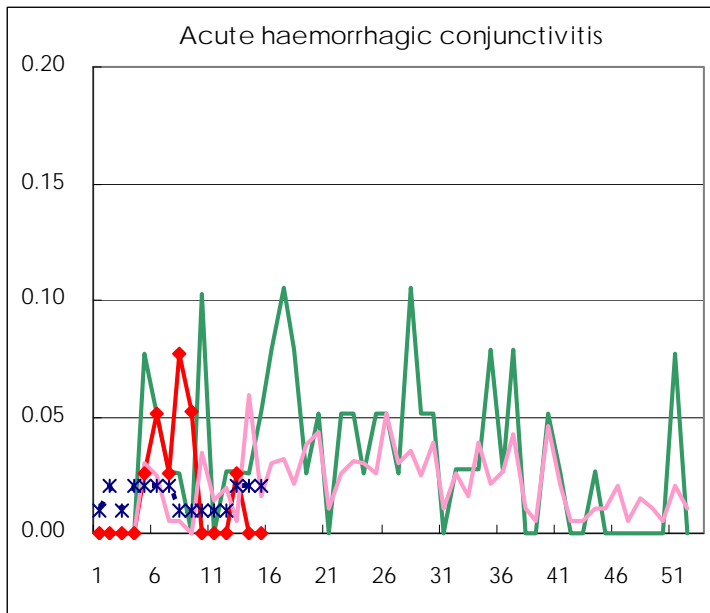
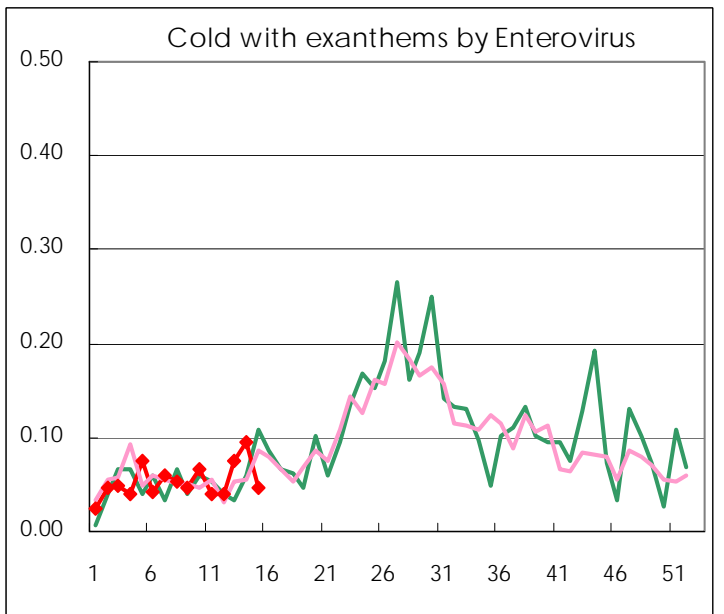
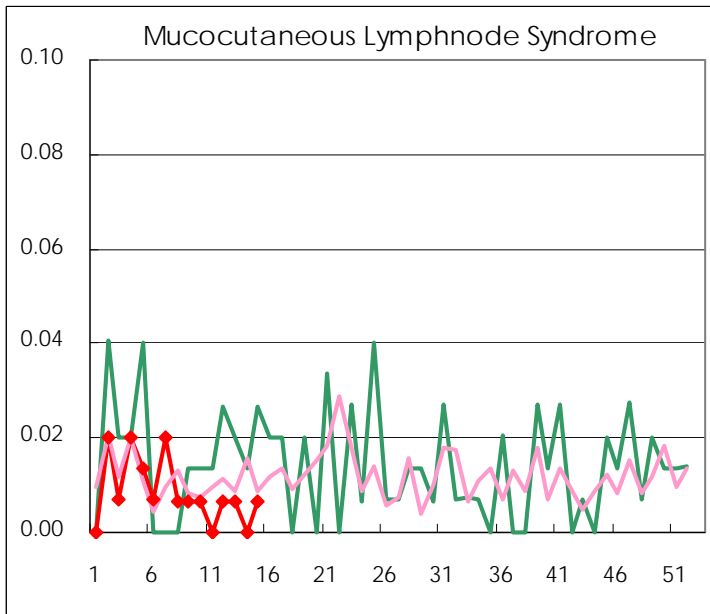
Diseases	2009				
	12th	13th	14th	15th	/sentinel
Respiratory syncytial virus infection	7	8	5	7	0.05
Pharyngoconjunctival fever	24	30	23	39	0.26
Group A streptococcal pharyngitis	319	247	218	224	1.51
Infectious gastroenteritis	972	828	833	926	6.26
Chickenpox	176	174	161	158	1.07
Hand, foot, and mouth disease	18	7	18	12	0.08
Erythema infectiosum	39	34	39	44	0.30
Exanthem subitum	93	58	92	121	0.82
Pertussis	2	4	5	8	0.05
Herpangina	11	3	7	7	0.05
Mumps	77	114	111	79	0.53
Cold with exanthems by Enterovirus	6	11	14	7	0.05
Mucocutaneous Lymphnode Syndrome	1	1		1	0.01
Influenza	3,946	2,499	1,429	1,082	3.76
Acute hemorrhagic conjunctivitis		1			
Epidemic keratoconjunctivitis	11	18	12	14	0.36
Bacterial meningitis			1		
Aseptic meningitis					
Mycoplasma pneumonia	4	7	13	5	0.22
Chlamydial pneumonia (excluding psittacosis)	1	1			

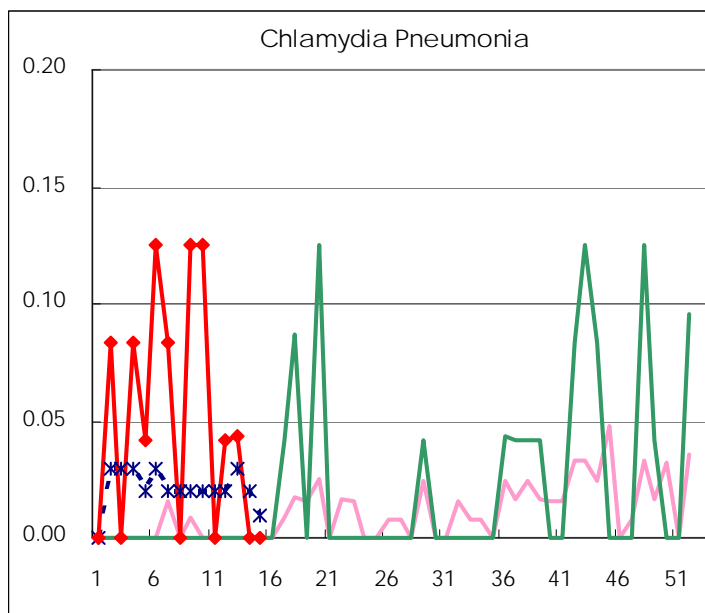
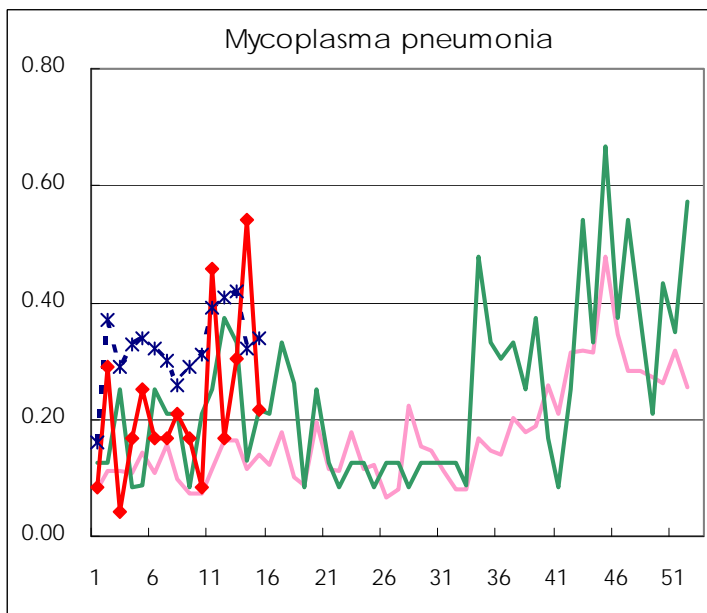
( Blank means 0. )

# Disease Trend Graph (weekly reported cases per sentinel in comparison)









Number of sentinel facilities  
for weekly reporting

Types of sentinels	Number of sentinels	Sentinels having reported
Pediatric	150	148
Influenza	290	288
Ophthalmic	39	39
Specially-designated	24	23

Tokyo Metropolitan Government  
Infectious Disease Surveillance Center