
INFECTIOUS DISEASES WEEKLY REPORT

TOKYO IDWR

Tokyo Metropolitan Infectious Disease Surveillance Center

14 May 2009 / Number 19

Surveillance System in Tokyo, Japan

The infectious diseases which all physicians must report

All physicians must report to health centers the incidence of the diseases which are shown at page one. Health centers electronically report the individual cases to Tokyo Metropolitan Infectious Disease Surveillance Center.

The infectious diseases required to be reported by the sentinels

The numbers of patients who visit the sentinel clinics or hospitals during a week are reported to health centers in Tokyo. And they electronically report the numbers to Tokyo Metropolitan Infectious Disease Surveillance Center. We have about 400 sentinel clinics and hospitals in Tokyo.

1st Week is early January and 52nd Week is end of December.

Tokyo Metropolitan Institute of Public Health
Epidemiological Information Office

TEL:81-3-3363-3213 FAX:81-3-5332-7365

e-mail:idsc@tokyo-eiken.go.jp

URL:idsc.tokyo-eiken.go.jp/

Number of patients with the diseases which all physicians must report

Category	Diseases	Tokyo				Cum 2009	Japan	
		16th	17th	18th	19th		19th	Cum 2009
I	Ebola hemorrhagic fever							
	Crimean-Congo hemorrhagic fever							
	Smallpox							
	South American hemorrhagic fever							
	Plague							
	Marburg disease							
	Lassa fever							
II	Acute poliomyelitis							
	Tuberculosis	69	72	75	16	1322	107	8653
	Diphtheria							
	Severe Acute Respiratory Syndrome(SARS)							
	Avian influenza H5N1							
III	Cholera							2
	Shigellosis		1	1		12	2	64
	Enterohemorrhagic Escherichia coli infection	3	3	1		20	13	332
	Typhoid fever		1			7		12
	Paratyphoid fever		1			3		6
IV	Hepatitis E					3		16
	West Nile fever							
	Hepatitis A			1		4	1	33
	Echinococcosis					1		9
	Yellow fever							
	Psittacosis							2
	Omsk hemorrhagic fever							
	Relapsing fever							
	Kyasanur forest disease							
	Q fever							1
	Rabies							
	Coccidioidomycosis					1		1
	Monkeypox							
	Hemorrhagic fever with renal syndrome							
	Western equine encephalitis							
	Tick-borne encephalitis							
	Anthrax							
	Scrub typhus(Tsutsugamushi disease)					2	2	49
	Dengue fever	2		1		8	2	26
	Eastern equine encephalitis							
	Avian influenza (excluding H5N1)							
	Nipah virus infection							
	Japanese spotted fever							6
	Japanese encephalitis							
	Epidemic typhus							
	Hantavirus pulmonary syndrome							
	Herpes B virus infection							
	Glanders							
	Brucellosis							1
	Venezuelan equine encephalitis							
Hendra virus infection								
Botulism								
Malaria	1		1		12		22	
Tularemia								
Lyme disease								
Lyssavirus infection(excluding rabies)								
Rift valley fever								
Melioidosis								
Legionellosis	2	2			21	2	203	
Leptospirosis							2	
Rocky mountain spotted fever								

Category	Diseases	Tokyo				Japan		
		16th	17th	18th	19th	Cum 2009	19th	Cum 2009
V	Amebiasis	2	4	2	1	50	2	295
	Viral hepatitis(excluding hepatitis A and E)	1	1		1	18	1	76
	Acute encephalitis(excluding JE and WNE)	1				9		84
	Cryptosporidiosis					1		2
	Creutzfeldt-Jakob disease	3		1		7		38
	Severe invasive streptococcal infections(TSLS)	1	1			5	2	45
	Acquired immunodeficiency syndrome (AIDS)	10	6	5	2	169	4	508
	Giardiasis		1			14		30
	Meningococcal meningitis							7
	Congenital rubella syndrome							
	Syphilis	9	5	3	1	79	1	243
	Tetanus		1			2		22
	Vancomycin-resistant S. aureus infection							
	Vancomycin-resistant Enterococcus infection	1	1	1		4		34
	Rubella	1	1			4	1	68
Measles	2	2	5	2	40	13	319	
Novel Flu	Novel influenza (swine-origin influenza A/H1N1) *						4	4

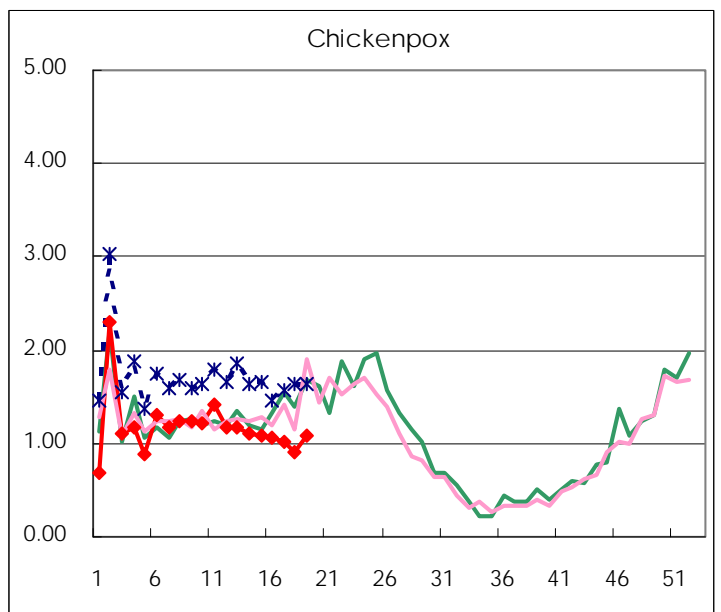
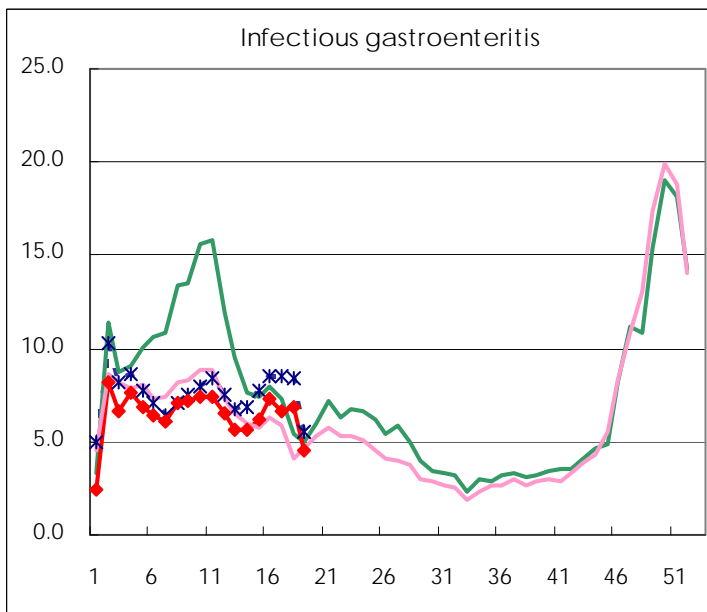
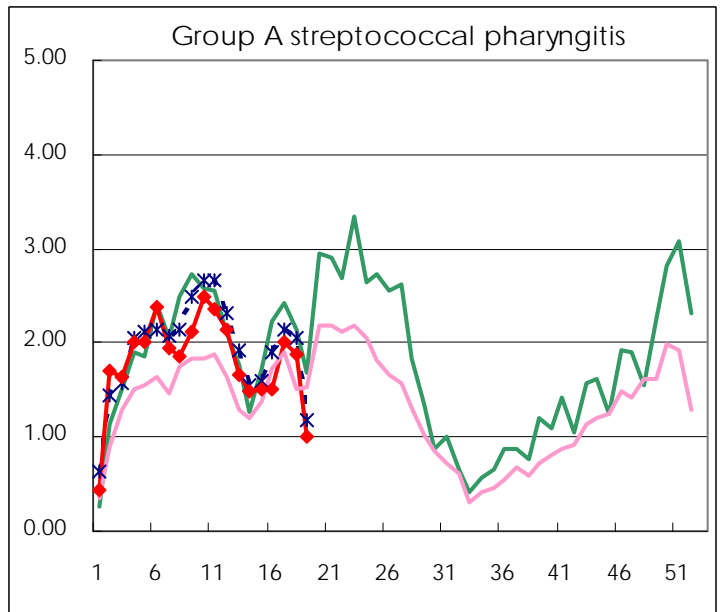
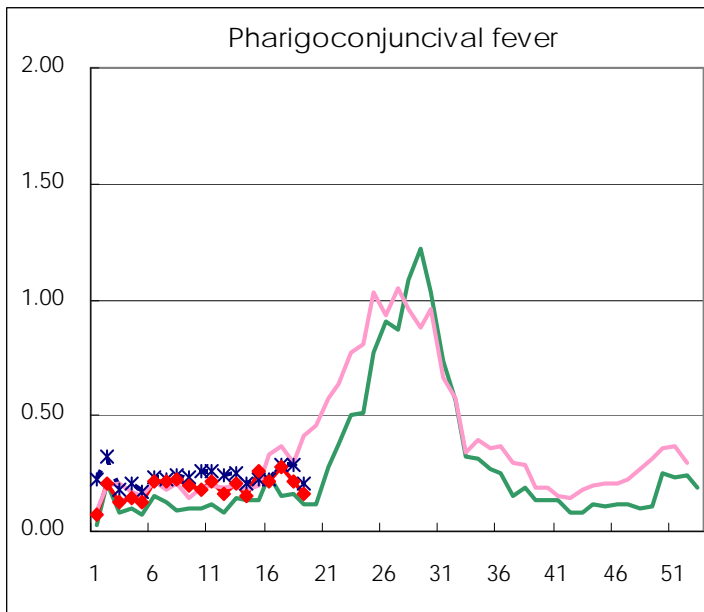
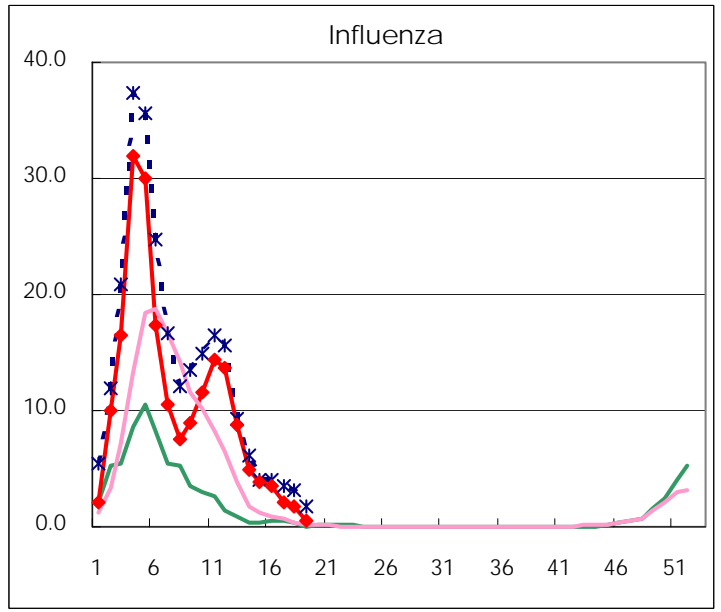
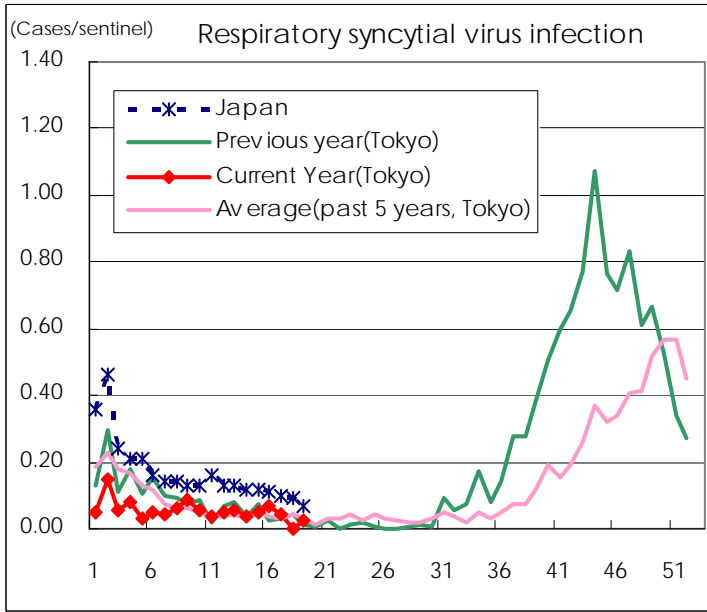
* laboratory confirmed cases

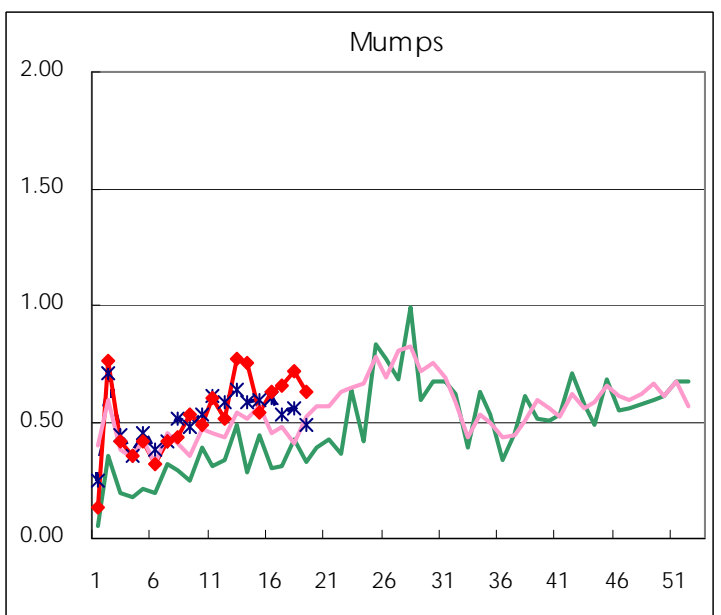
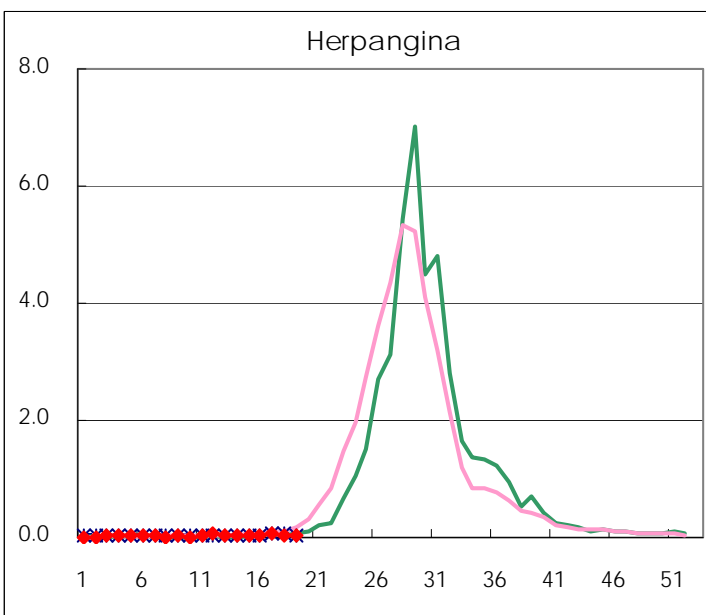
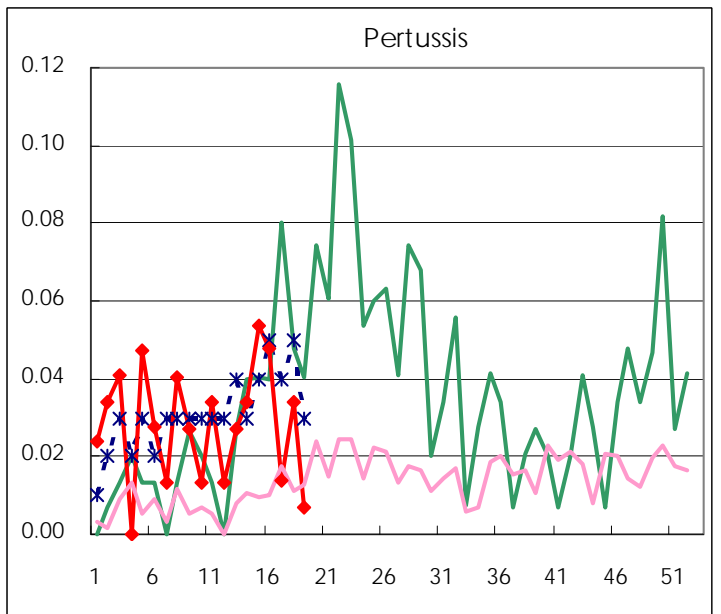
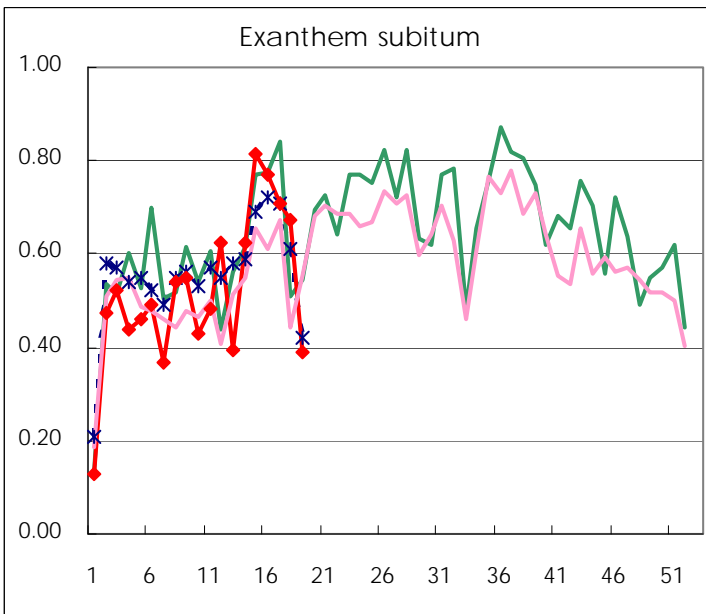
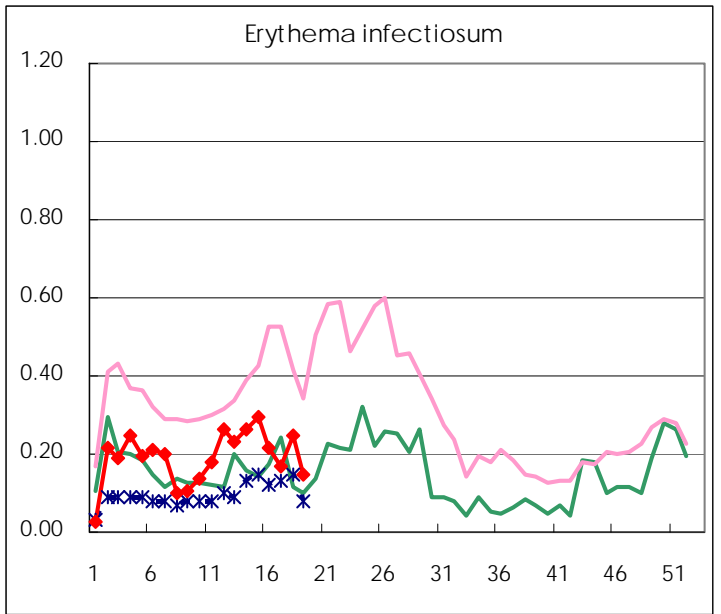
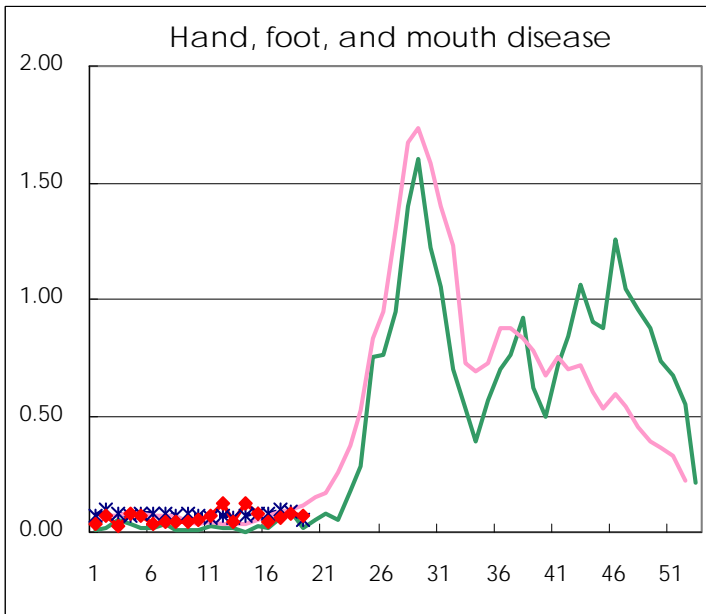
Number of patients with the diseases to be reported
by the designated clinics and hospitals

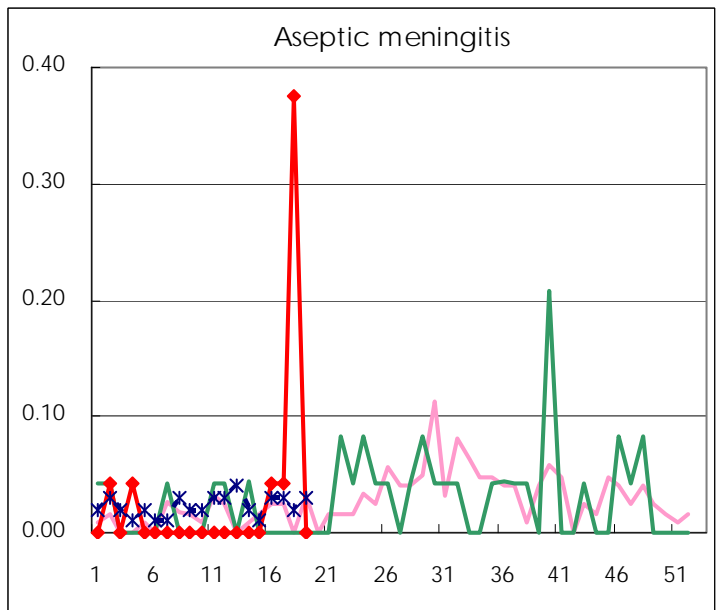
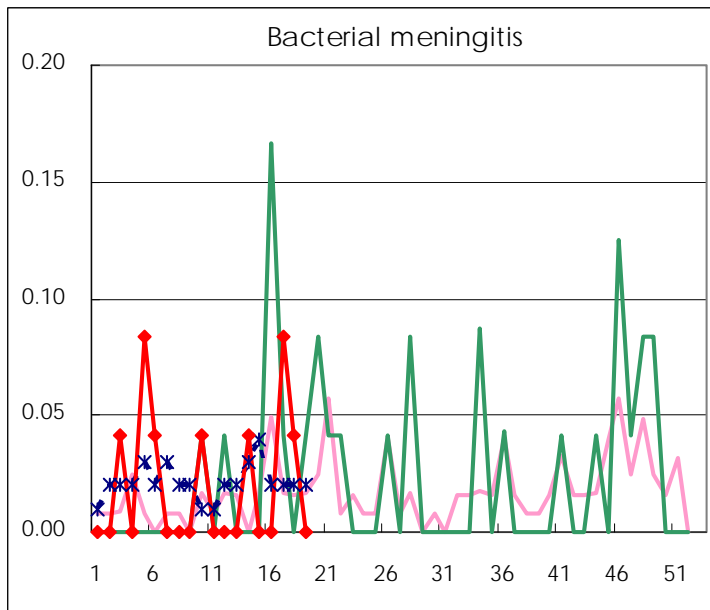
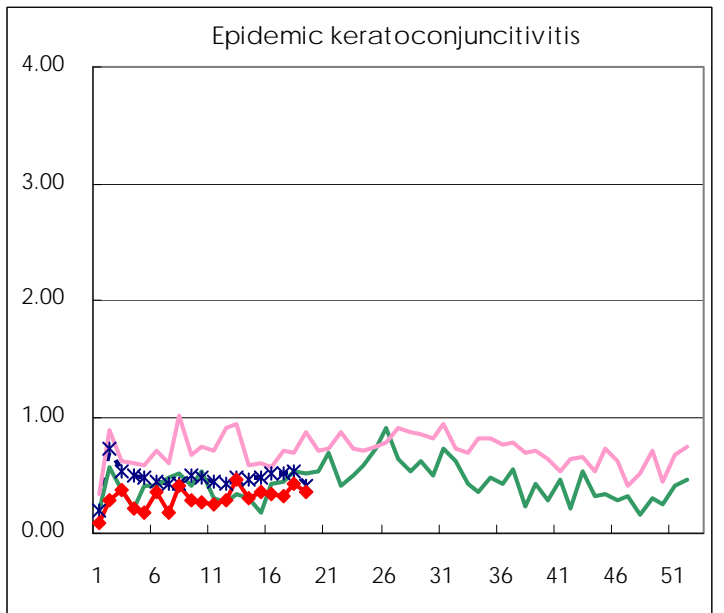
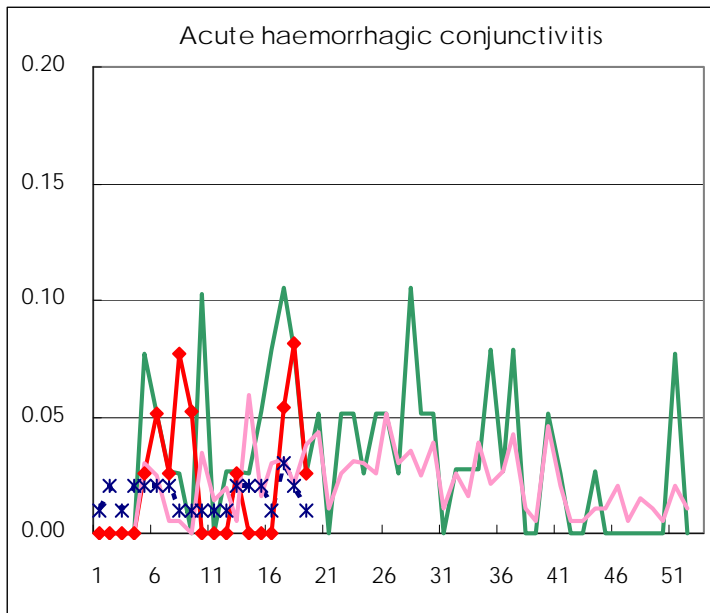
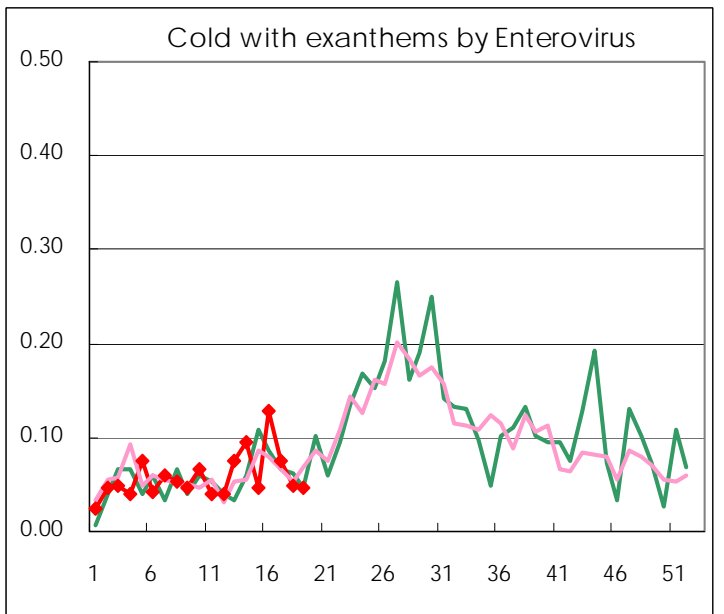
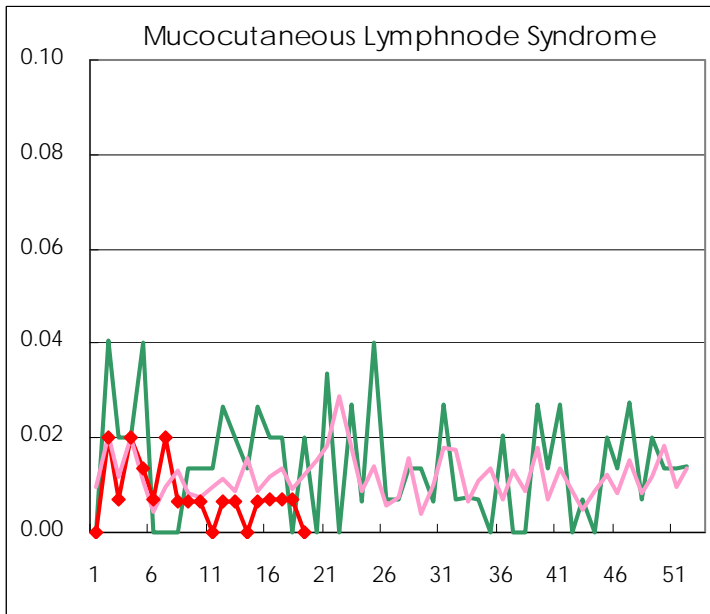
Diseases	2009				
	16th	17th	18th	19th	/sentinel
Respiratory syncytial virus infection	10	6		4	0.03
Pharyngoconjunctival fever	31	41	32	24	0.16
Group A streptococcal pharyngitis	222	296	277	149	1.00
Infectious gastroenteritis	1,075	976	1,016	672	4.51
Chickenpox	157	150	133	162	1.09
Hand, foot, and mouth disease	6	9	12	10	0.07
Erythema infectiosum	32	25	36	22	0.15
Exanthem subitum	113	104	99	58	0.39
Pertussis	7	2	5	1	0.01
Herpangina	4	9	6	3	0.02
Mumps	93	96	106	93	0.62
Cold with exanthems by Enterovirus	19	11	7	7	0.05
Mucocutaneous Lymphnode Syndrome	1	1	1		
Influenza	991	609	474	175	0.61
Acute hemorrhagic conjunctivitis		2	3	1	0.03
Epidemic keratoconjunctivitis	13	12	16	14	0.36
Bacterial meningitis		2	1		
Aseptic meningitis	1	1	9		
Mycoplasma pneumonia	6	6	4	4	0.17
Chlamydial pneumonia (excluding psittacosis)	1				

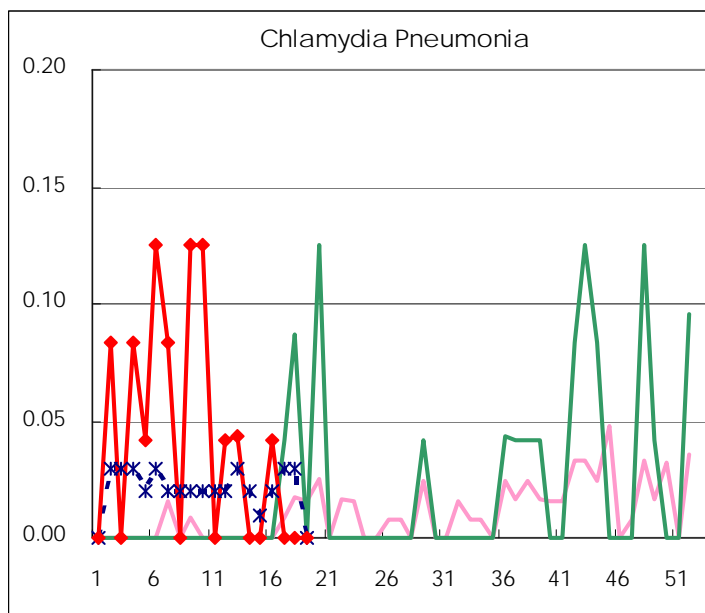
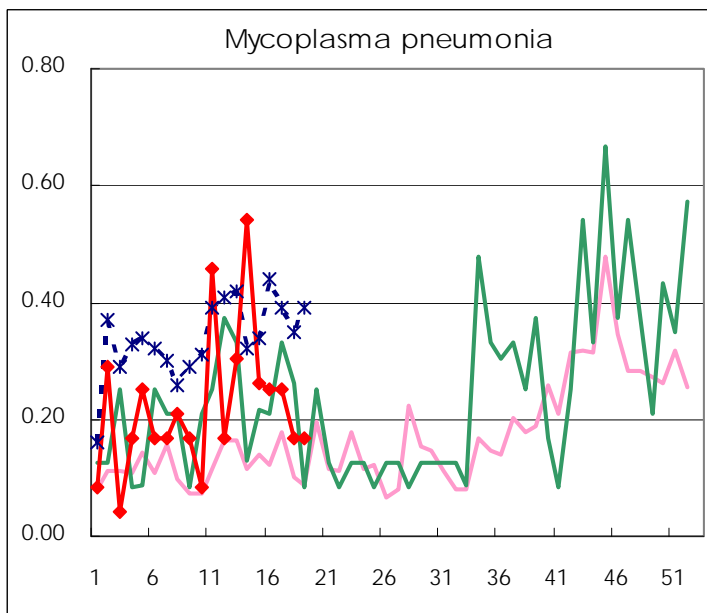
(Blank means 0.)

Disease Trend Graph (weekly reported cases per sentinel in comparison)









Number of sentinel facilities
for weekly reporting

Types of sentinels	Number of sentinels	Sentinels having reported
Pediatric	150	149
Influenza	290	289
Ophthalmic	39	39
Specially-designated	24	24

Tokyo Metropolitan Government
Infectious Disease Surveillance Center