

---

INFECTIOUS DISEASES WEEKLY REPORT

# TOKYO IDWR

Tokyo Metropolitan Infectious Disease Surveillance Center

## 4 June 2009 / Number 22

### Surveillance System in Tokyo, Japan

The infectious diseases which all physicians must report

All physicians must report to health centers the incidence of the diseases which are shown at page one. Health centers electronically report the individual cases to Tokyo Metropolitan Infectious Disease Surveillance Center.

The infectious diseases required to be reported by the sentinels

The numbers of patients who visit the sentinel clinics or hospitals during a week are reported to health centers in Tokyo. And they electronically report the numbers to Tokyo Metropolitan Infectious Disease Surveillance Center. We have about 400 sentinel clinics and hospitals in Tokyo.

1st Week is early January and 52nd Week is end of December.

Tokyo Metropolitan Institute of Public Health  
Epidemiological Information Office

TEL:81-3-3363-3213 FAX:81-3-5332-7365

e-mail:[idsc@tokyo-eiken.go.jp](mailto:idsc@tokyo-eiken.go.jp)

URL:[idsc.tokyo-eiken.go.jp/](http://idsc.tokyo-eiken.go.jp/)

---

### Number of patients with the diseases which all physicians must report

Category	Diseases	Tokyo				Japan		
		19th	20th	21st	22nd	Cum 2009	22nd	Cum 2009
I	Ebola hemorrhagic fever							
	Crimean-Congo hemorrhagic fever							
	Smallpox							
	South American hemorrhagic fever							
	Plague							
	Marburg disease							
	Lassa fever							
II	Acute poliomyelitis							
	Tuberculosis	30	87	84	53	1649	311	10464
	Diphtheria							
	Severe Acute Respiratory Syndrome(SARS)							
	Avian influenza H5N1							
III	Cholera							2
	Shigellosis		1		1	14	4	76
	Enterohemorrhagic Escherichia coli infection		2	3	8	33	47	504
	Typhoid fever					7		13
	Paratyphoid fever				1	4	1	8
IV	Hepatitis E				2	5	2	19
	West Nile fever							
	Hepatitis A		1		1	6	6	49
	Echinococcosis					1		9
	Yellow fever							
	Psittacosis		1			1		5
	Omsk hemorrhagic fever							
	Relapsing fever							
	Kyasanur forest disease							
	Q fever							1
	Rabies							
	Coccidioidomycosis					1		1
	Monkeypox							
	Hemorrhagic fever with renal syndrome							
	Western equine encephalitis							
	Tick-borne encephalitis							
	Anthrax							
	Scrub typhus(Tsutsugamushi disease)					2	12	77
	Dengue fever				1	9		29
	Eastern equine encephalitis							
	Avian influenza (excluding H5N1)							
	Nipah virus infection							
	Japanese spotted fever						1	15
	Japanese encephalitis							
	Epidemic typhus							
	Hantavirus pulmonary syndrome							
	Herpes B virus infection							
	Glanders							
	Brucellosis							1
	Venezuelan equine encephalitis							
Hendra virus infection								
Botulism								
Malaria					12		23	
Tularemia								
Lyme disease								
Lyssavirus infection(excluding rabies)								
Rift valley fever								
Melioidosis								
Legionellosis				1	22	6	236	
Leptospirosis							2	
Rocky mountain spotted fever								

Category	Diseases	Tokyo				Japan		
		19th	20th	21st	22nd	Cum 2009	22nd	Cum 2009
V	Amebiasis	1	5	1	1	57	6	340
	Viral hepatitis(excluding hepatitis A and E)	1			3	21	5	88
	Acute encephalitis(excluding JE and WNE)			1		10	1	97
	Cryptosporidiosis					1		2
	Creutzfeldt-Jakob disease		1			8	1	49
	Severe invasive streptococcal infections(TSLS)			1		6	2	55
	Acquired immunodeficiency syndrome (AIDS)	2	4	12	15	200	15	595
	Giardiasis			1		15	1	34
	Meningococcal meningitis				1	1	1	8
	Congenital rubella syndrome							
	Syphilis	1	1	4	6	91	12	288
	Tetanus		1			3	2	36
	Vancomycin-resistant S. aureus infection							
	Vancomycin-resistant Enterococcus infection			1		5		37
	Rubella				1	5	3	81
Measles	2	4	6	2	52	12	378	
Novel Flu	Novel influenza (swine-origin influenza A/H1N1) *			3		3	32	371

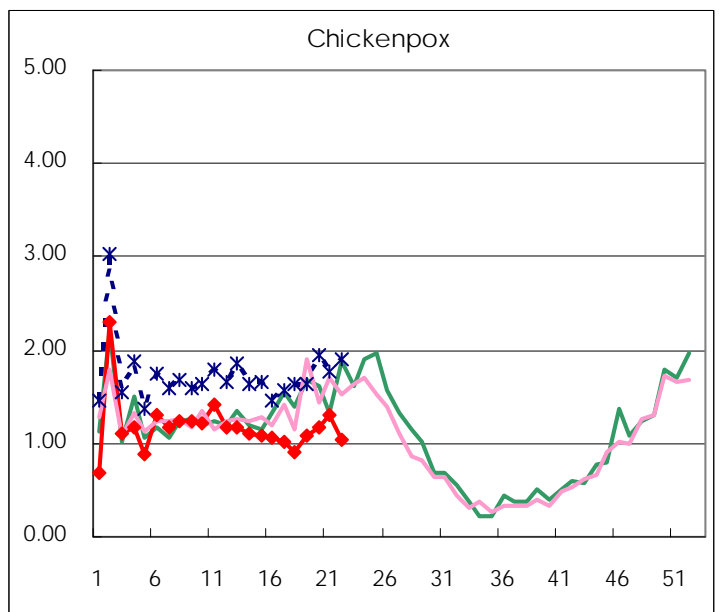
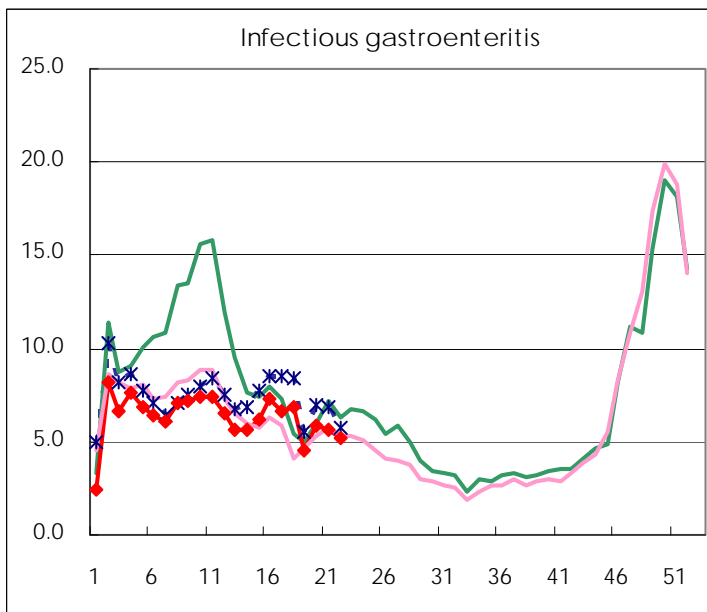
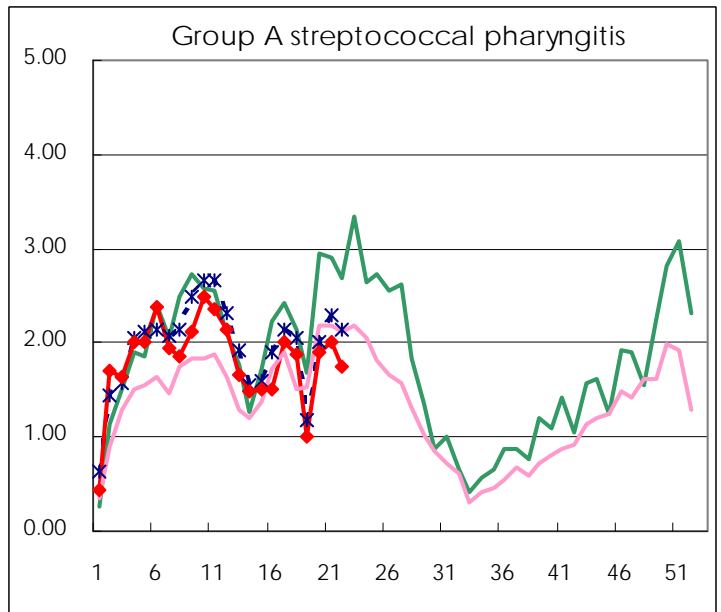
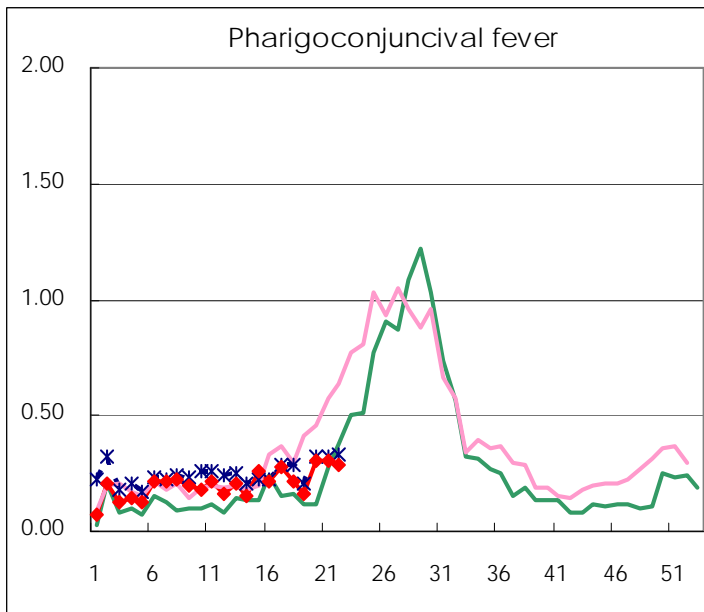
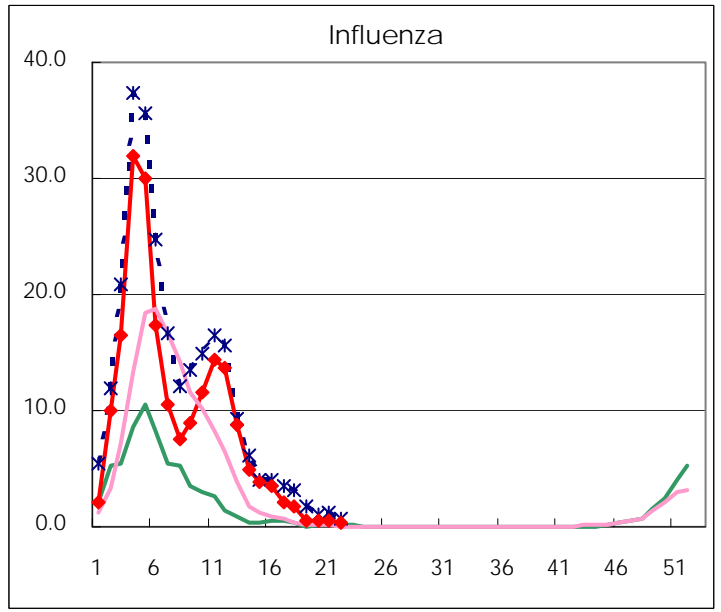
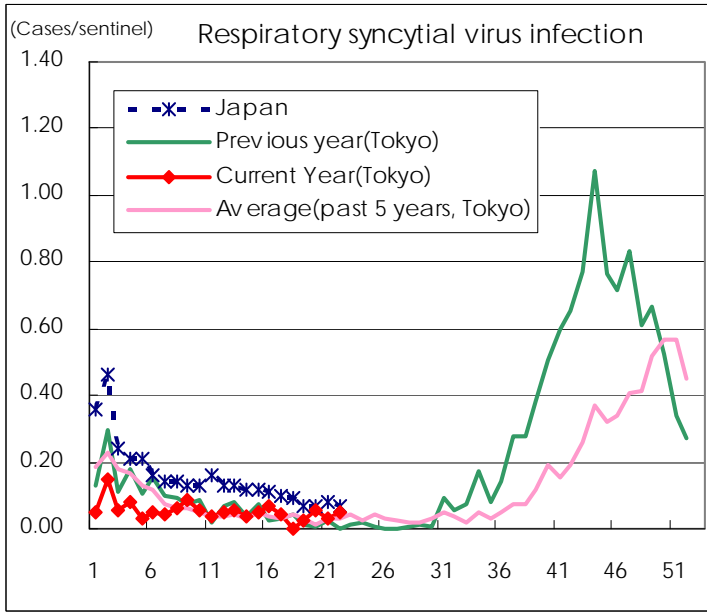
\* laboratory confirmed cases

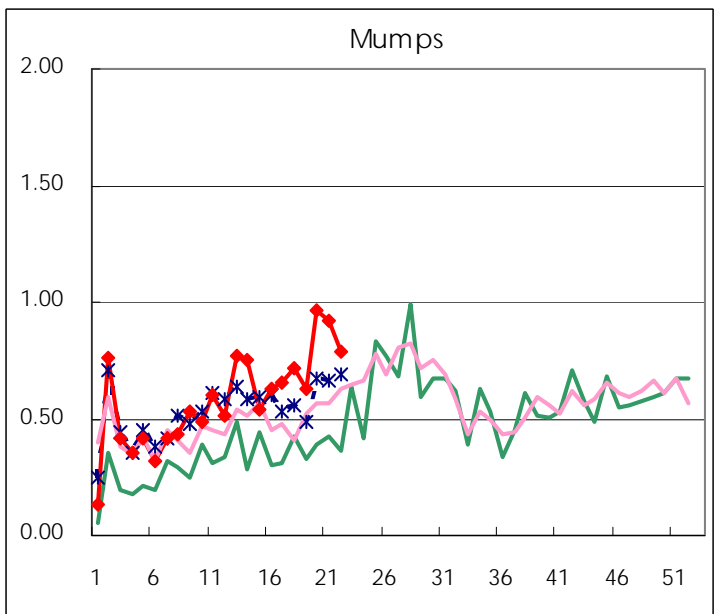
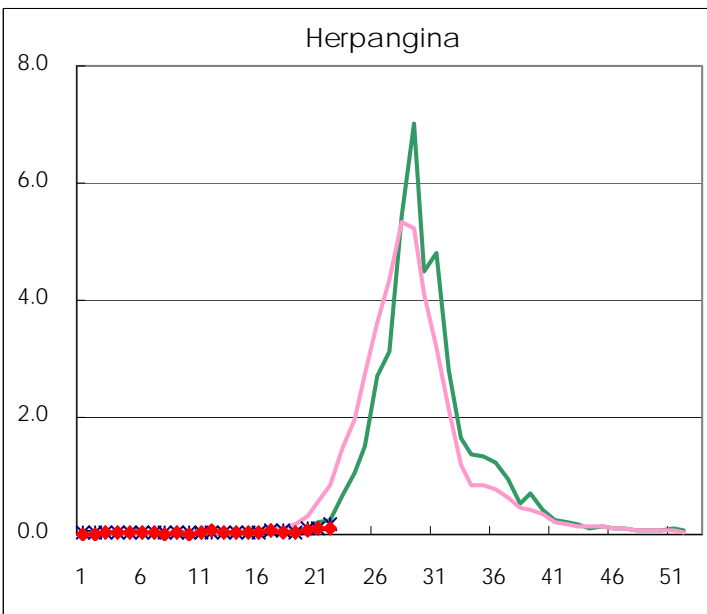
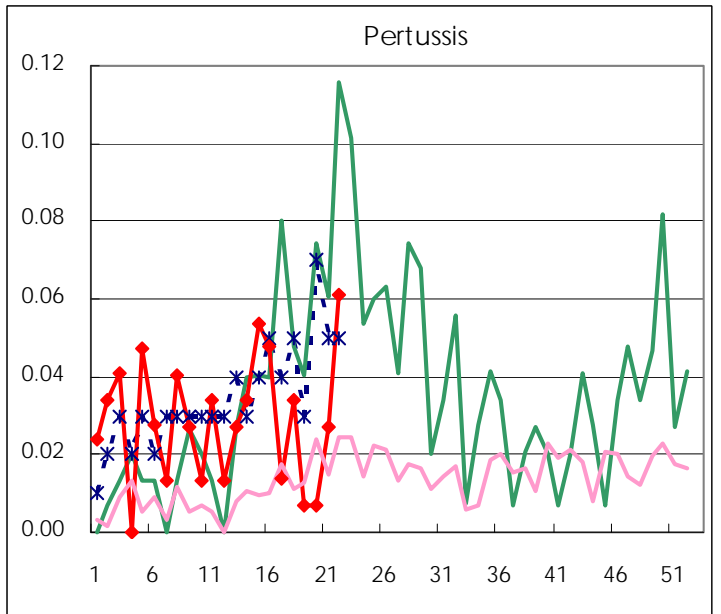
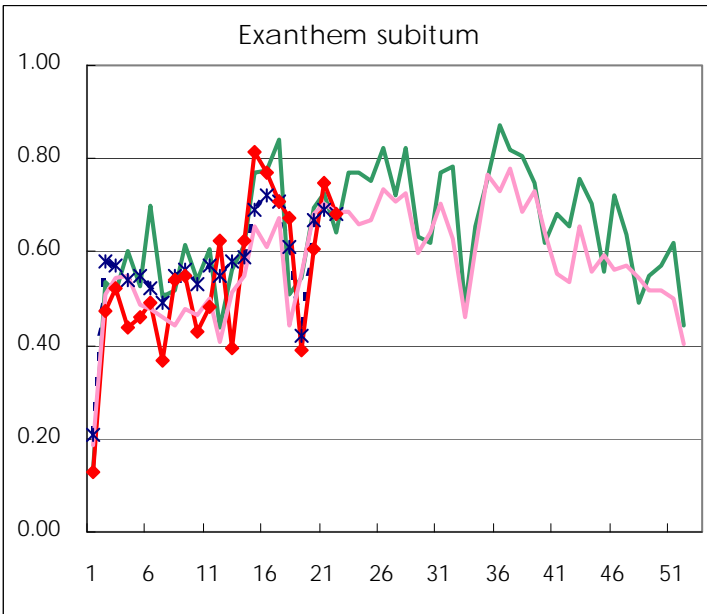
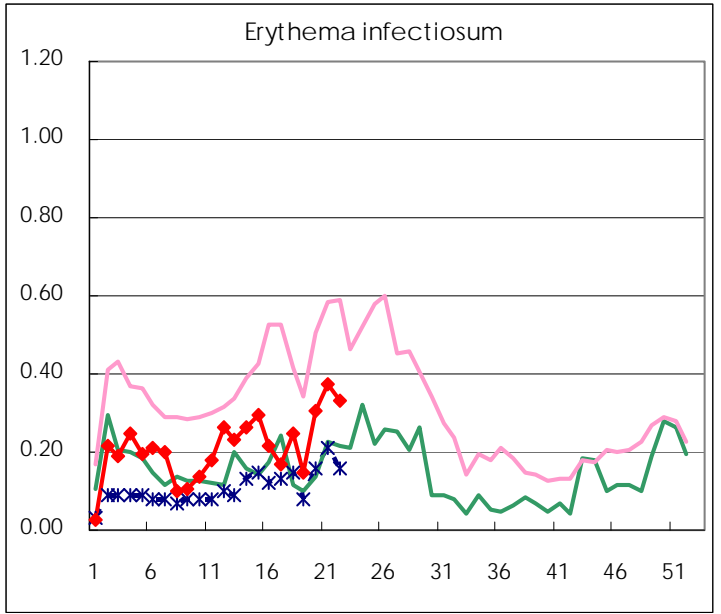
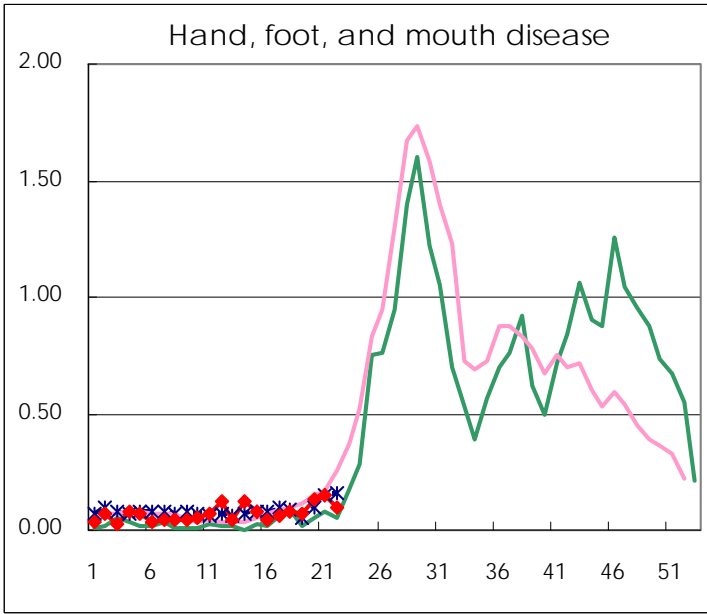
Number of patients with the diseases to be reported  
by the designated clinics and hospitals

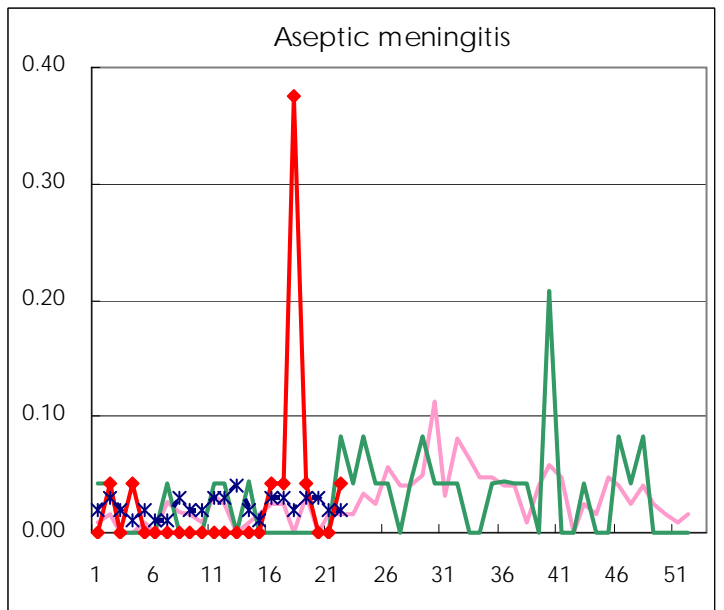
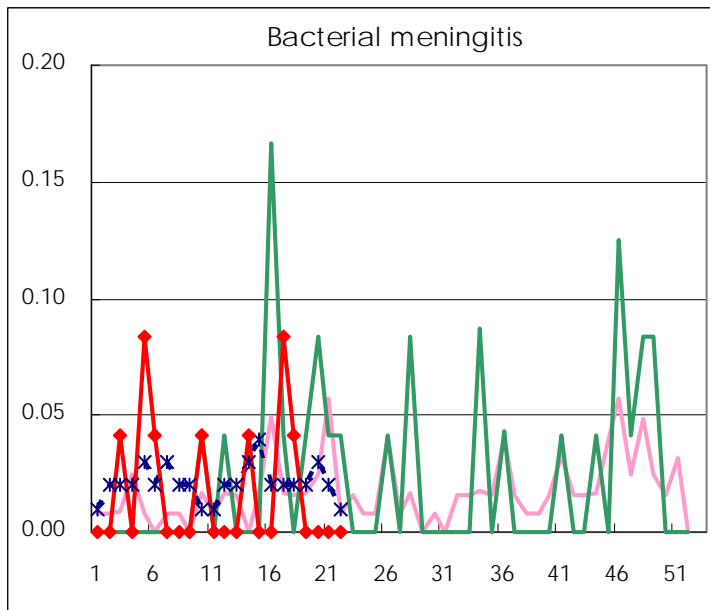
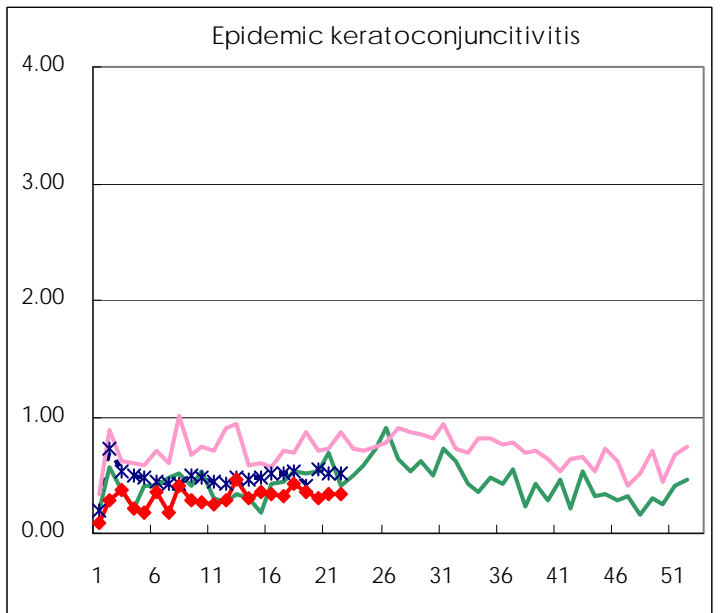
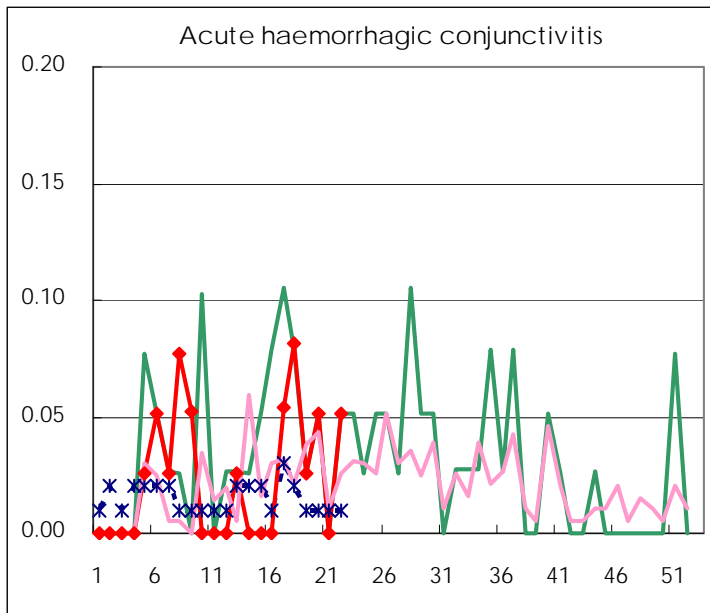
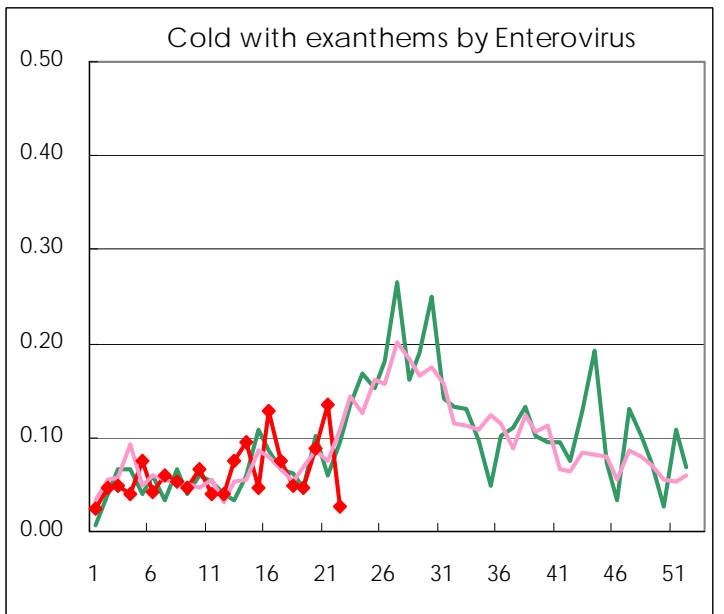
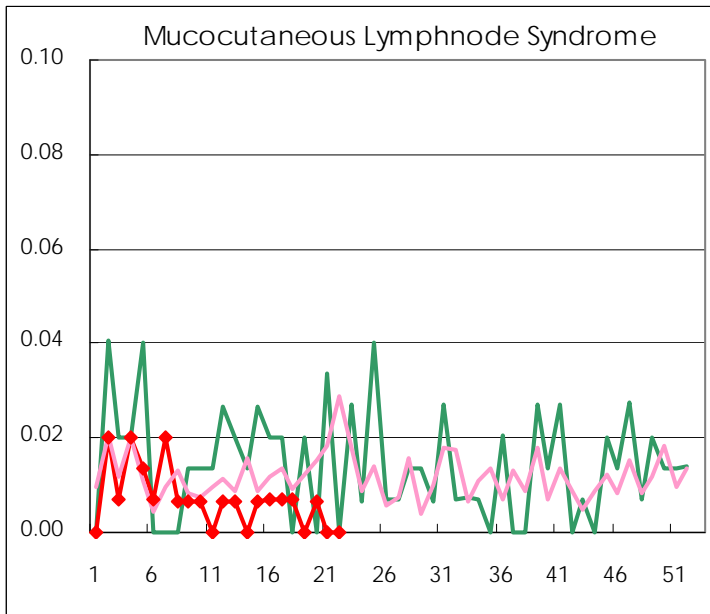
Diseases	2009				
	19th	20th	21st	22nd	/sentinel
Respiratory syncytial virus infection	4	8	5	7	0.05
Pharyngoconjunctival fever	24	45	45	42	0.28
Group A streptococcal pharyngitis	149	281	298	257	1.74
Infectious gastroenteritis	672	867	830	766	5.18
Chickenpox	162	174	192	154	1.04
Hand, foot, and mouth disease	10	20	22	14	0.09
Erythema infectiosum	22	45	55	49	0.33
Exanthem subitum	58	90	111	101	0.68
Pertussis	1	1	4	9	0.06
Herpangina	3	9	13	16	0.11
Mumps	93	143	136	116	0.78
Cold with exanthems by Enterovirus	7	13	20	4	0.03
Mucocutaneous Lymphnode Syndrome		1			
Influenza	175	127	159	84	0.29
Acute hemorrhagic conjunctivitis	1	2		2	0.05
Epidemic keratoconjunctivitis	14	12	13	13	0.33
Bacterial meningitis					
Aseptic meningitis	1			1	0.04
Mycoplasma pneumonia	4	8	7	9	0.38
Chlamydial pneumonia (excluding psittacosis)			3	3	0.13

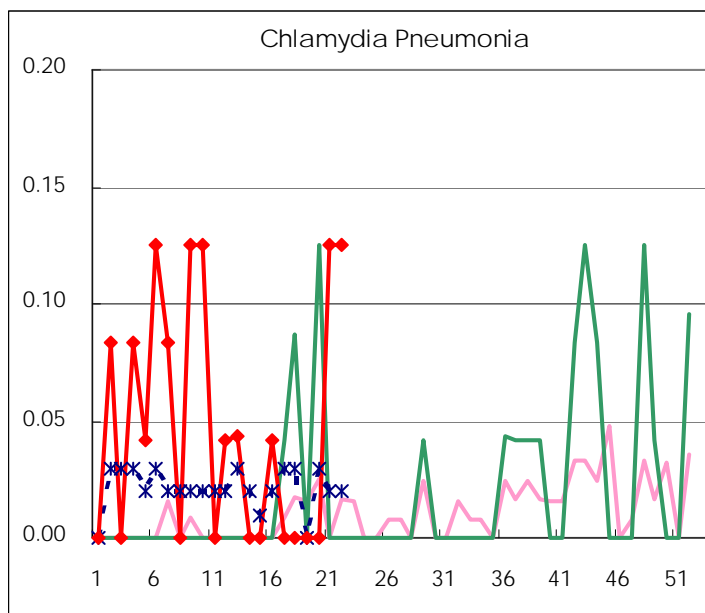
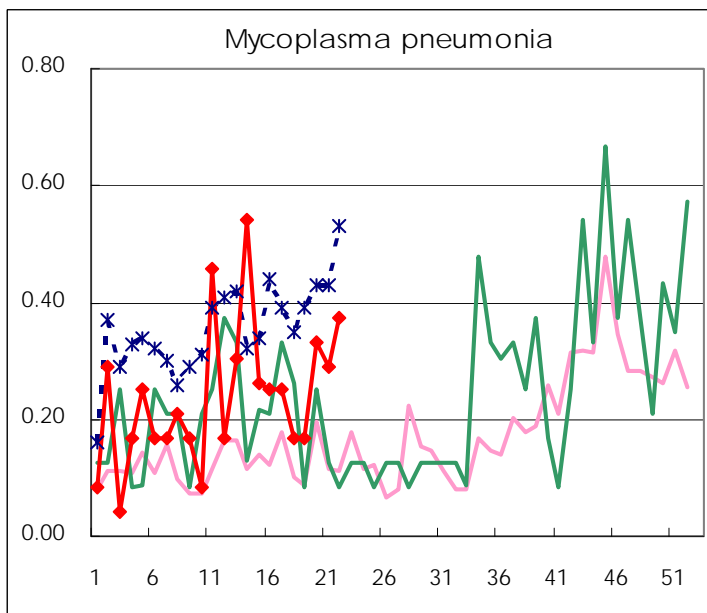
( Blank means 0. )

# Disease Trend Graph (weekly reported cases per sentinel in comparison)









Number of sentinel facilities  
for weekly reporting

Types of sentinels	Number of sentinels	Sentinels having reported
Pediatric	150	148
Influenza	290	287
Ophthalmic	39	39
Specially-designated	24	24

Tokyo Metropolitan Government  
Infectious Disease Surveillance Center