
INFECTIOUS DISEASES WEEKLY REPORT

TOKYO IDWR

Tokyo Metropolitan Infectious Disease Surveillance Center

18 June 2009 / Number 24

Surveillance System in Tokyo, Japan

The infectious diseases which all physicians must report

All physicians must report to health centers the incidence of the diseases which are shown at page one. Health centers electronically report the individual cases to Tokyo Metropolitan Infectious Disease Surveillance Center.

The infectious diseases required to be reported by the sentinels

The numbers of patients who visit the sentinel clinics or hospitals during a week are reported to health centers in Tokyo. And they electronically report the numbers to Tokyo Metropolitan Infectious Disease Surveillance Center. We have about 400 sentinel clinics and hospitals in Tokyo.

1st Week is early January and 52nd Week is end of December.

Tokyo Metropolitan Institute of Public Health
Epidemiological Information Office

TEL:81-3-3363-3213 FAX:81-3-5332-7365

e-mail:idsc@tokyo-eiken.go.jp

URL:idsc.tokyo-eiken.go.jp/

Number of patients with the diseases which all physicians must report

Category	Diseases	Tokyo				Japan		
		21st	22nd	23rd	24th	Cum 2009	24th	Cum 2009
I	Ebola hemorrhagic fever							
	Crimean-Congo hemorrhagic fever							
	Smallpox							
	South American hemorrhagic fever							
	Plague							
	Marburg disease							
	Lassa fever							
II	Acute poliomyelitis							
	Tuberculosis	97	74	64	63	1857	331	11605
	Diphtheria							
	Severe Acute Respiratory Syndrome(SARS)							
Avian influenza H5N1								
III	Cholera			1		1		4
	Shigellosis		2		3	18	2	81
	Enterohemorrhagic Escherichia coli infection	3	8	4	8	45	59	684
	Typhoid fever					7	1	14
	Paratyphoid fever		1			4		8
IV	Hepatitis E		2			5	1	22
	West Nile fever							
	Hepatitis A		1	1	1	8	5	60
	Echinococcosis					1		10
	Yellow fever							
	Psittacosis					1	2	7
	Omsk hemorrhagic fever							
	Relapsing fever							
	Kyasanur forest disease							
	Q fever				1	1	1	2
	Rabies							
	Coccidioidomycosis					1		1
	Monkeypox							
	Hemorrhagic fever with renal syndrome							
	Western equine encephalitis							
	Tick-borne encephalitis							
	Anthrax							
	Scrub typhus(Tsutsugamushi disease)					2	4	95
	Dengue fever		1	1		10		29
	Eastern equine encephalitis							
	Avian influenza (excluding H5N1)							
	Nipah virus infection							
	Japanese spotted fever						1	20
	Japanese encephalitis							
	Epidemic typhus							
	Hantavirus pulmonary syndrome							
	Herpes B virus infection							
	Glanders							
	Brucellosis							1
	Venezuelan equine encephalitis							
Hendra virus infection								
Botulism								
Malaria					1	13	24	
Tularemia								
Lyme disease								
Lyssavirus infection(excluding rabies)								
Rift valley fever								
Melioidosis								
Legionellosis		1	1	1	24	13	261	
Leptospirosis							2	
Rocky mountain spotted fever								

Category	Diseases	Tokyo					Japan	
		21st	22nd	23rd	24th	Cum 2009	24th	Cum 2009
V	Amebiasis	1	1	3	2	62	5	371
	Viral hepatitis(excluding hepatitis A and E)		3	1	2	24	1	98
	Acute encephalitis(excluding JE and WNE)	1		1		11		102
	Cryptosporidiosis					1		2
	Creutzfeldt-Jakob disease			2		10	2	56
	Severe invasive streptococcal infections(TSLS)	1		1		7	3	60
	Acquired immunodeficiency syndrome (AIDS)	12	15	16	8	224	13	662
	Giardiasis	1				15	1	39
	Meningococcal meningitis		1			1	1	9
	Congenital rubella syndrome							
	Syphilis	4	6	7	4	102	14	329
	Tetanus					3	1	42
	Vancomycin-resistant S. aureus infection							
	Vancomycin-resistant Enterococcus infection	1			1	6	1	42
	Rubella		1	2		7	2	89
Measles	6	2	4	2	58	9	405	
Novel Flu	Novel influenza (swine-origin influenza A/H1N1) *	3		6	30	39	171	595

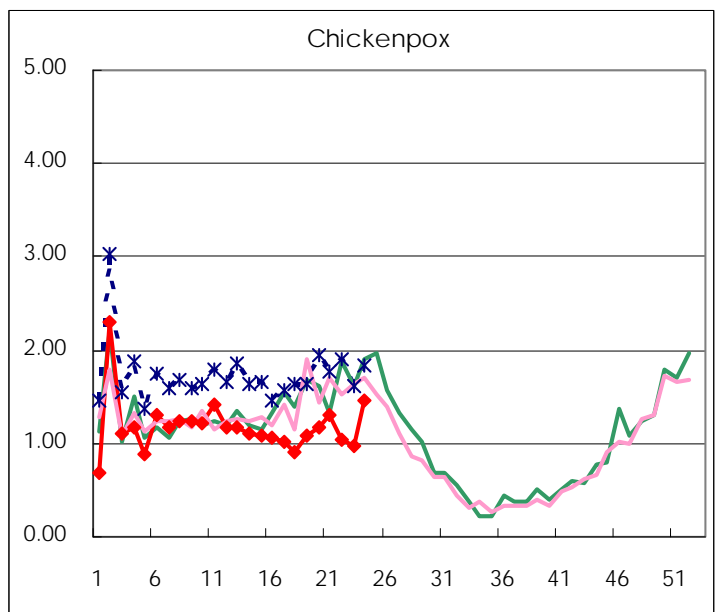
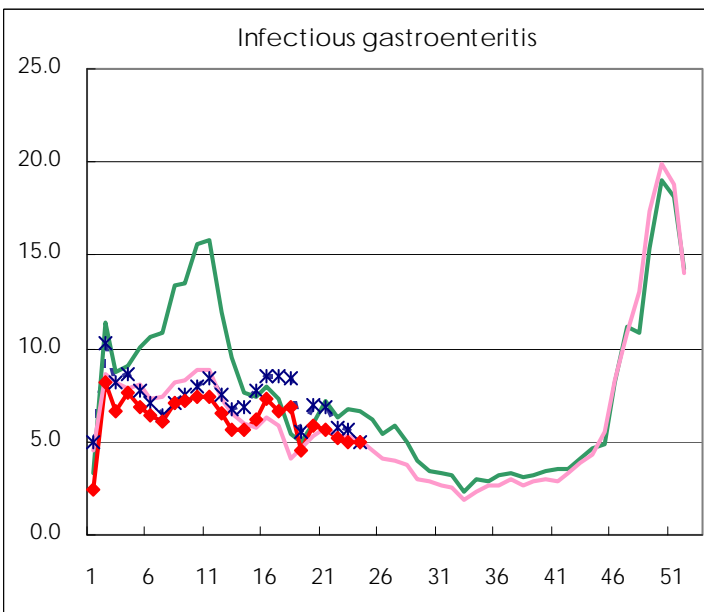
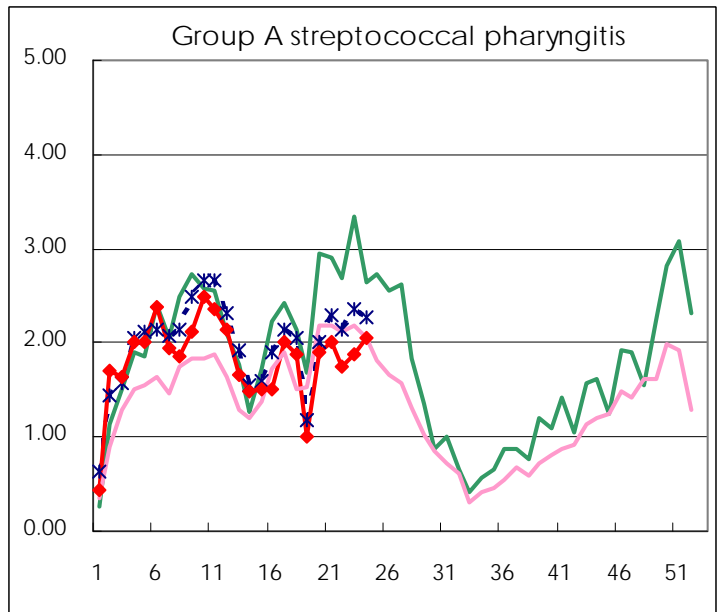
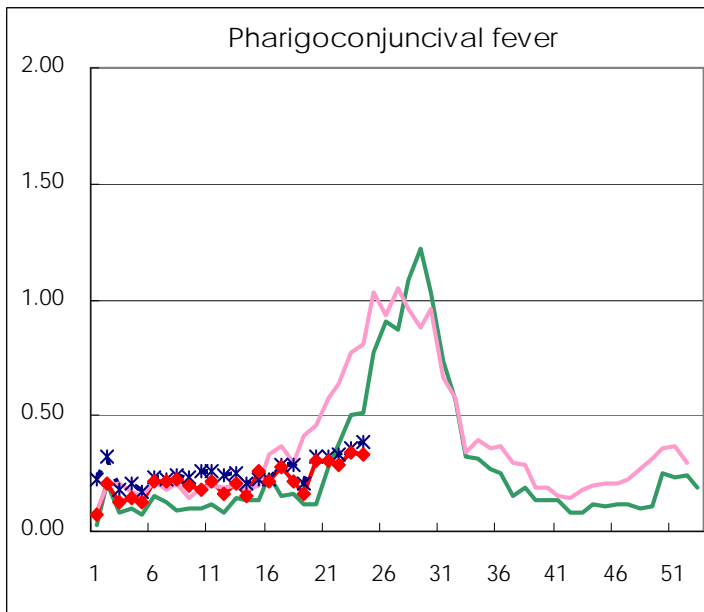
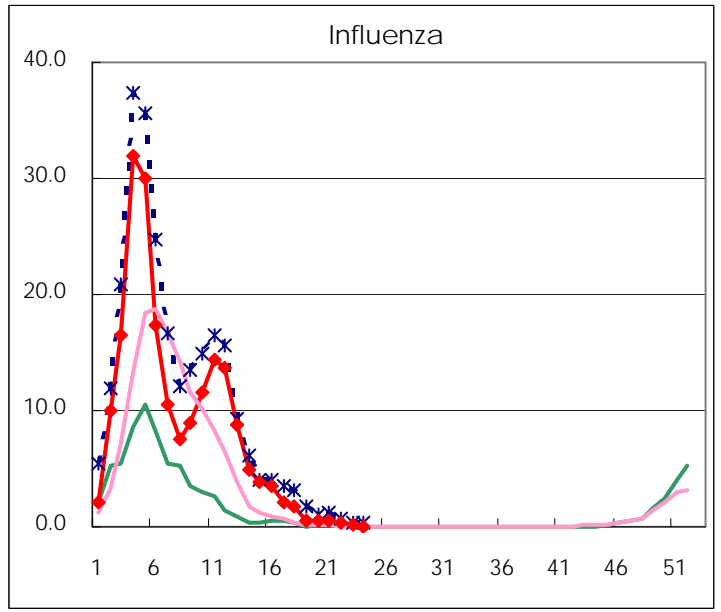
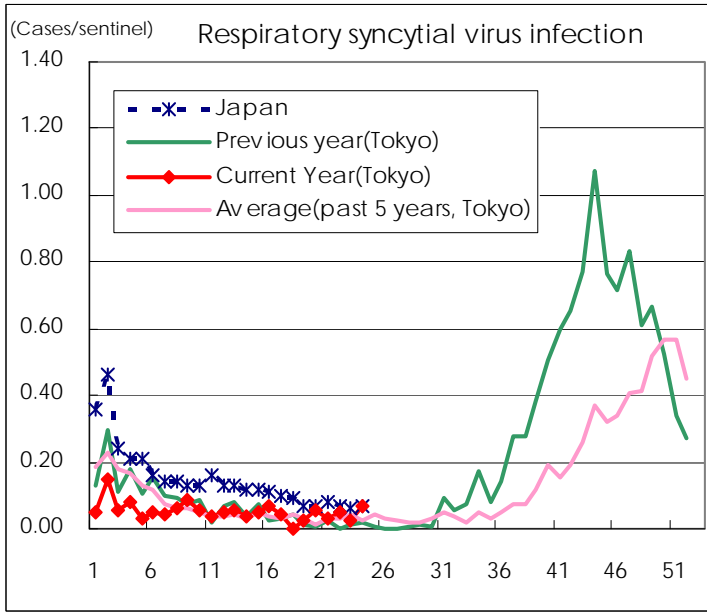
* laboratory confirmed cases

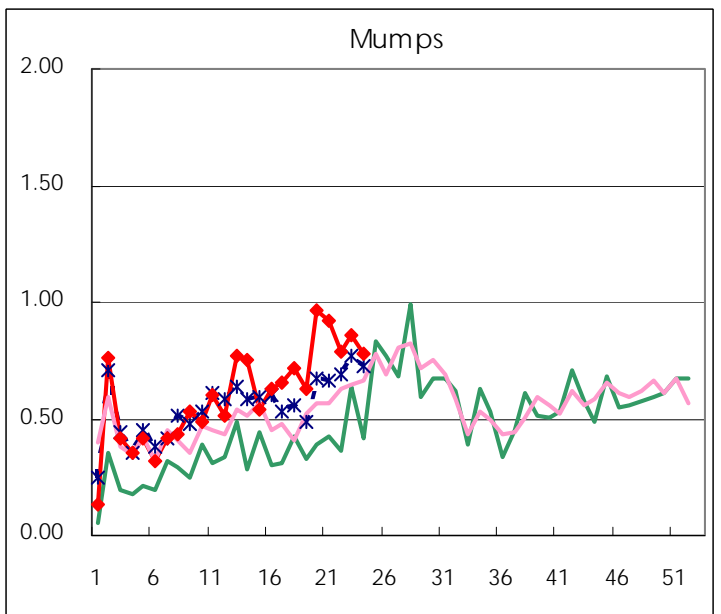
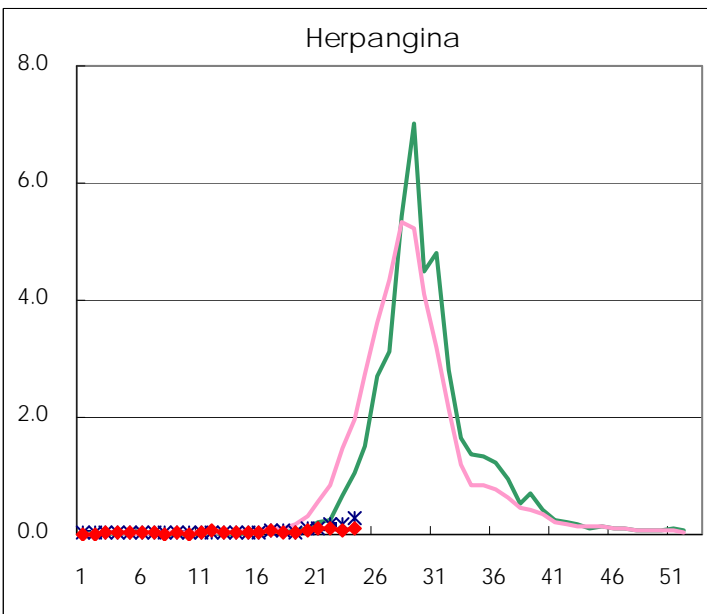
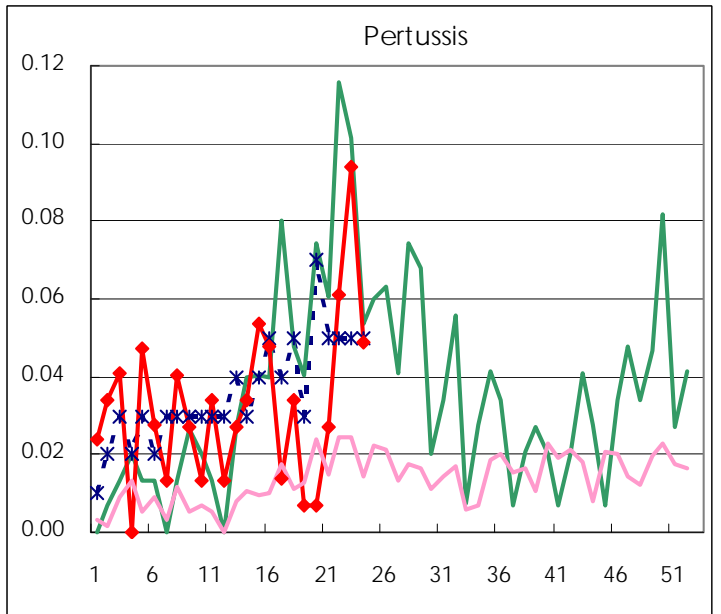
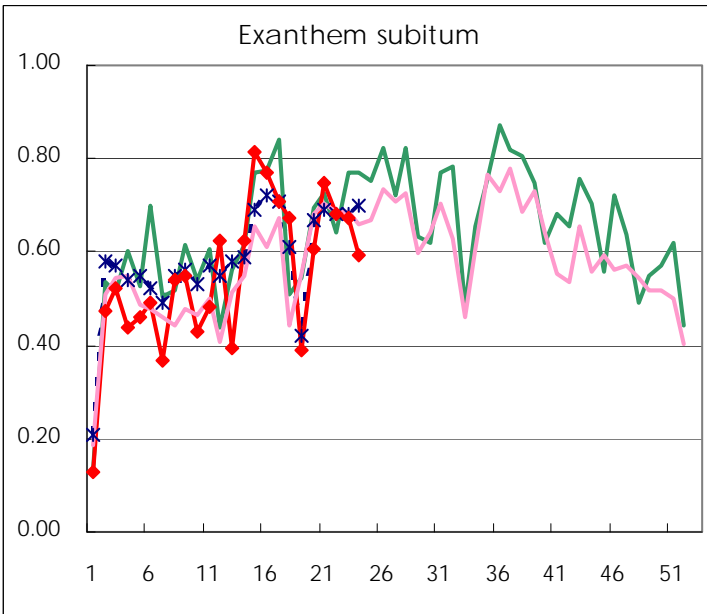
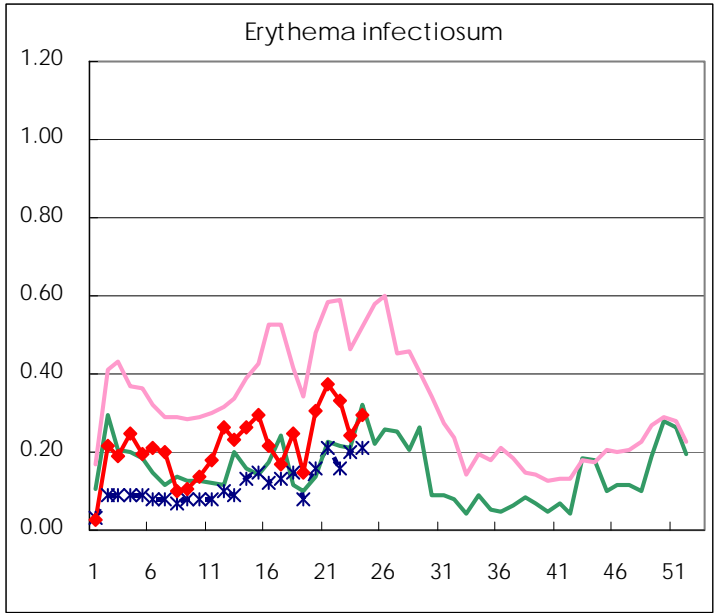
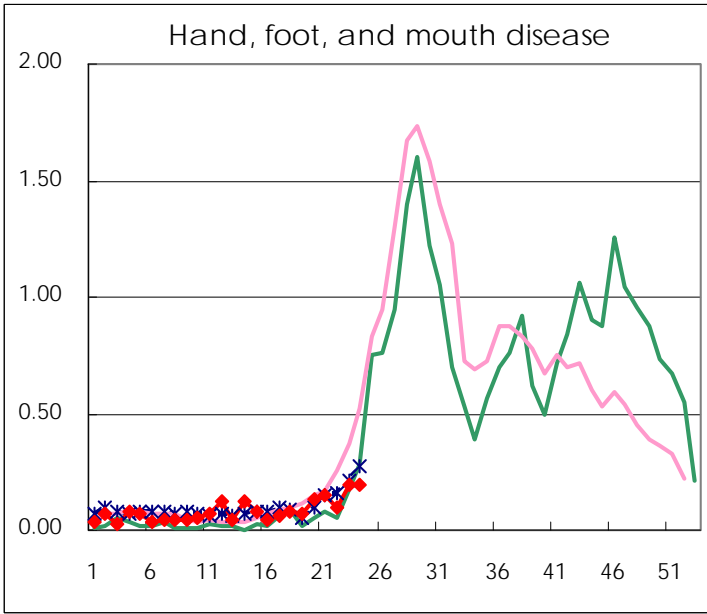
Number of patients with the diseases to be reported
by the designated clinics and hospitals

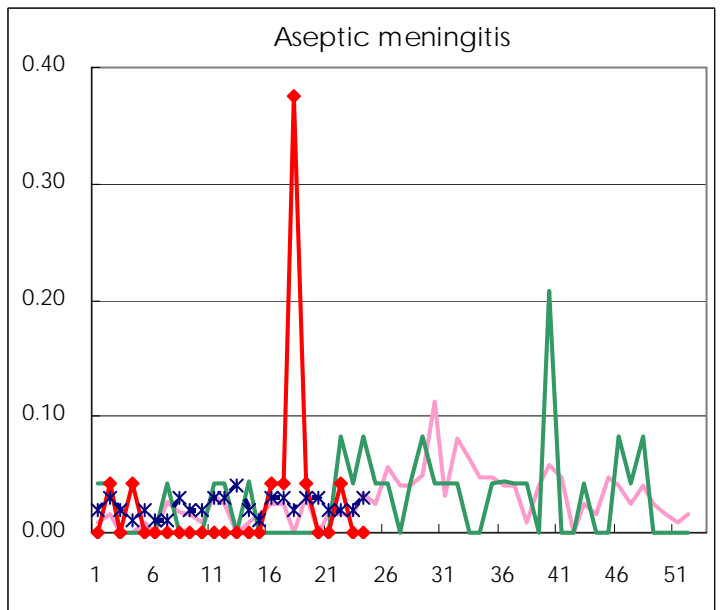
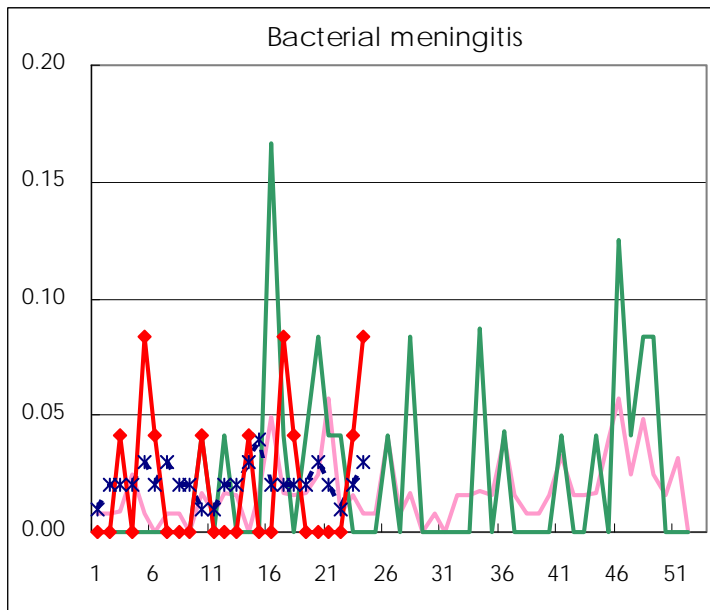
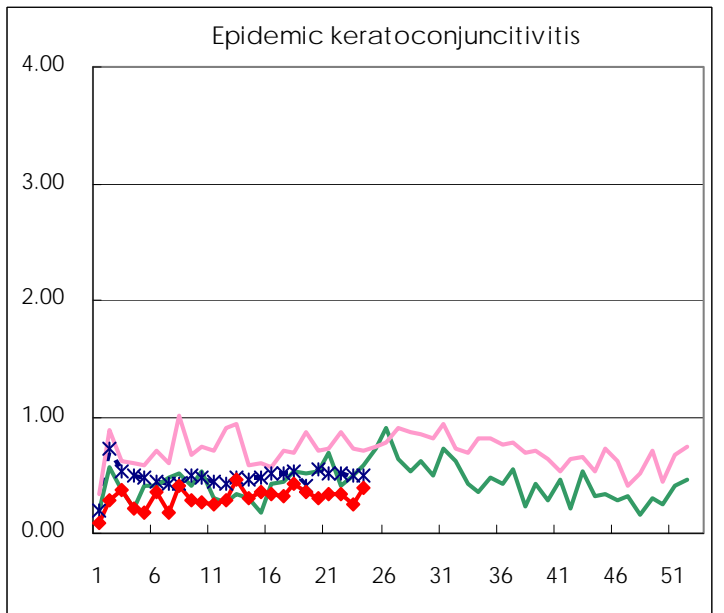
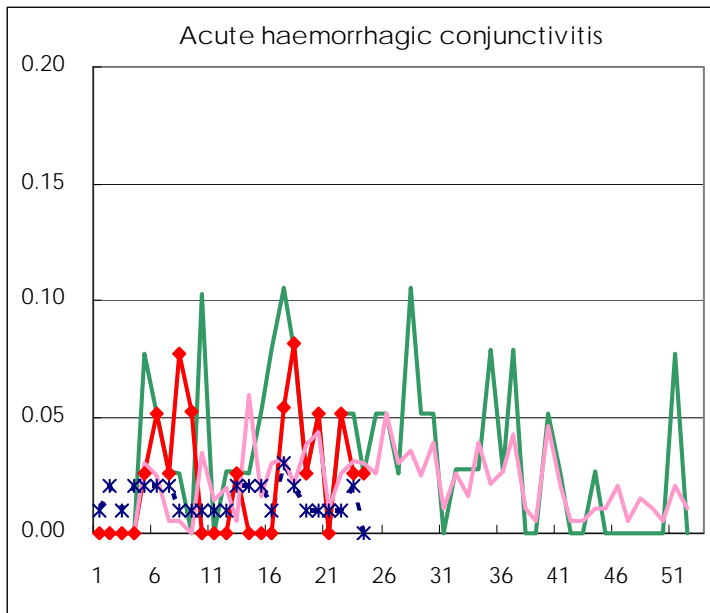
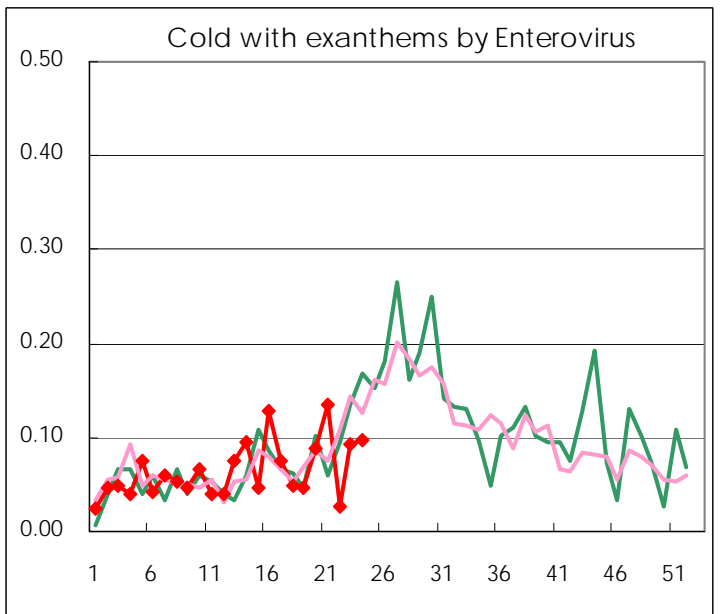
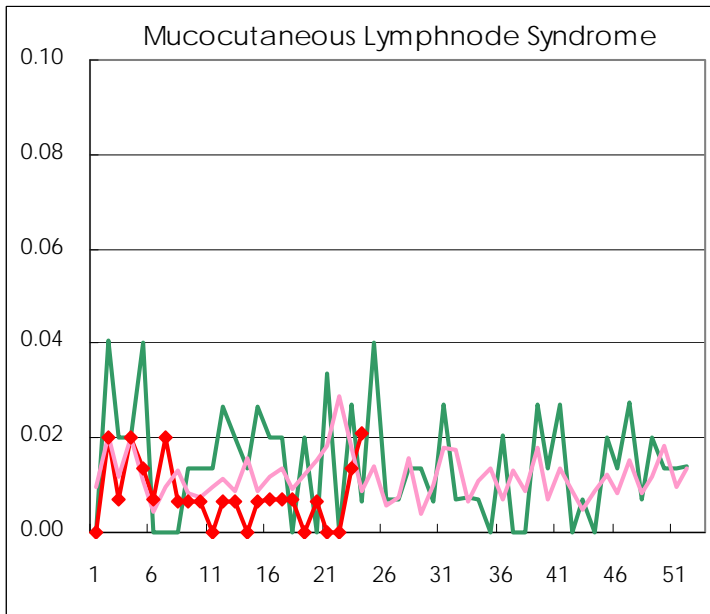
Diseases	2009				
	21st	22nd	23rd	24th	/sentinel
Respiratory syncytial virus infection	5	7	4	10	0.07
Pharyngoconjunctival fever	45	42	51	47	0.33
Group A streptococcal pharyngitis	298	257	279	292	2.04
Infectious gastroenteritis	830	766	743	708	4.95
Chickenpox	192	154	146	209	1.46
Hand, foot, and mouth disease	22	14	29	28	0.20
Erythema infectiosum	55	49	36	42	0.29
Exanthem subitum	111	101	100	85	0.59
Pertussis	4	9	14	7	0.05
Herpangina	13	16	11	16	0.11
Mumps	136	116	128	111	0.78
Cold with exanthems by Enterovirus	20	4	14	14	0.10
Mucocutaneous Lymphnode Syndrome			2	3	0.02
Influenza	159	84	42	23	0.08
Acute hemorrhagic conjunctivitis		2	1	1	0.03
Epidemic keratoconjunctivitis	13	13	10	15	0.38
Bacterial meningitis			1	2	0.08
Aseptic meningitis		1			
Mycoplasma pneumonia	7	9	12	7	0.29
Chlamydial pneumonia (excluding psittacosis)	3	3	3	1	0.04

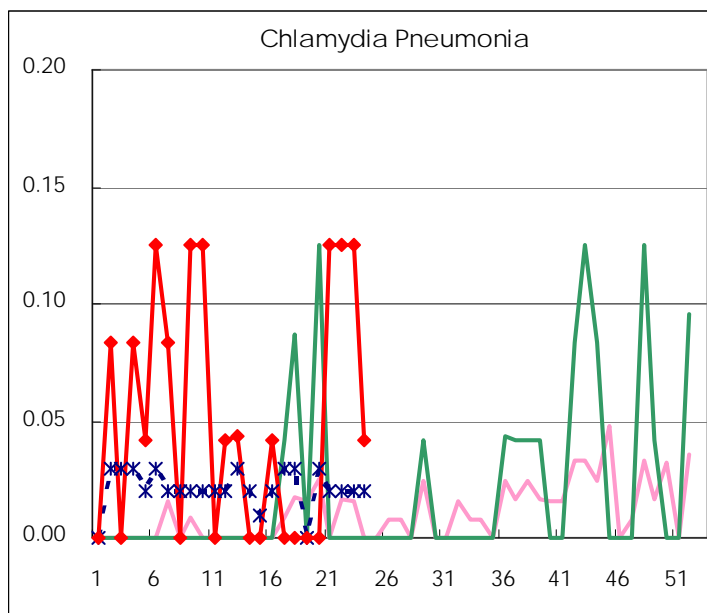
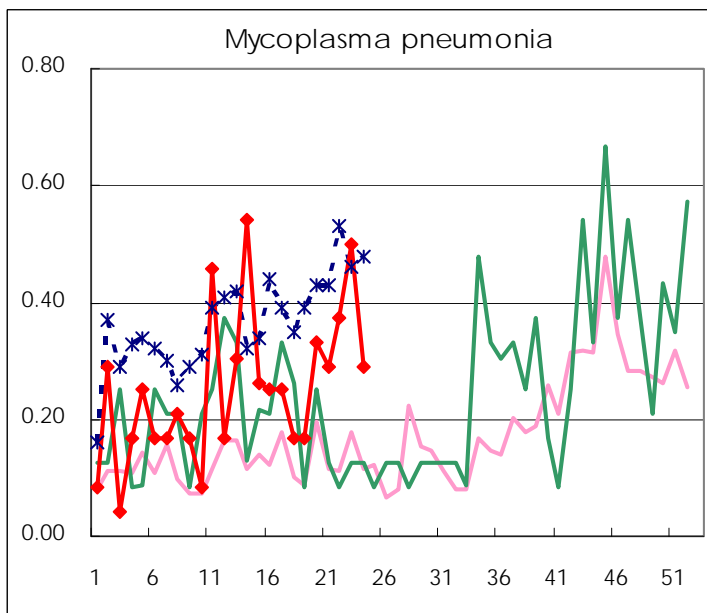
(Blank means 0.)

Disease Trend Graph (weekly reported cases per sentinel in comparison)









Number of sentinel facilities
for weekly reporting

Types of sentinels	Number of sentinels	Sentinels having reported
Pediatric	150	143
Influenza	290	282
Ophthalmic	39	39
Specially-designated	24	24

Tokyo Metropolitan Government
Infectious Disease Surveillance Center