
INFECTIOUS DISEASES WEEKLY REPORT

TOKYO IDWR

Tokyo Metropolitan Infectious Disease Surveillance Center

25 June 2009 / Number 25

Surveillance System in Tokyo, Japan

The infectious diseases which all physicians must report

All physicians must report to health centers the incidence of the diseases which are shown at page one. Health centers electronically report the individual cases to Tokyo Metropolitan Infectious Disease Surveillance Center.

The infectious diseases required to be reported by the sentinels

The numbers of patients who visit the sentinel clinics or hospitals during a week are reported to health centers in Tokyo. And they electronically report the numbers to Tokyo Metropolitan Infectious Disease Surveillance Center. We have about 400 sentinel clinics and hospitals in Tokyo.

1st Week is early January and 52nd Week is end of December.

Tokyo Metropolitan Institute of Public Health
Epidemiological Information Office

TEL:81-3-3363-3213 FAX:81-3-5332-7365

e-mail:idsc@tokyo-eiken.go.jp

URL:idsc.tokyo-eiken.go.jp/

Number of patients with the diseases which all physicians must report

Category	Diseases	Tokyo				Japan		
		22nd	23rd	24th	25th	Cum 2009	25th	Cum 2009
I	Ebola hemorrhagic fever							
	Crimean-Congo hemorrhagic fever							
	Smallpox							
	South American hemorrhagic fever							
	Plague							
	Marburg disease							
	Lassa fever							
II	Acute poliomyelitis							
	Tuberculosis	81	70	62	57	1930	315	12233
	Diphtheria							
	Severe Acute Respiratory Syndrome(SARS)							
	Avian influenza H5N1							
III	Cholera		1			1		4
	Shigellosis	2		3		18	2	83
	Enterohemorrhagic Escherichia coli infection	8	4	8	6	51	57	762
	Typhoid fever					7	1	15
	Paratyphoid fever	1				4	1	9
IV	Hepatitis E	2				5		22
	West Nile fever							
	Hepatitis A	1	1	1		8	2	64
	Echinococcosis					1		11
	Yellow fever							
	Psittacosis					1		7
	Omsk hemorrhagic fever							
	Relapsing fever							
	Kyasanur forest disease							
	Q fever			1		1		2
	Rabies							
	Coccidioidomycosis					1		2
	Monkeypox							
	Hemorrhagic fever with renal syndrome							
	Western equine encephalitis							
	Tick-borne encephalitis							
	Anthrax							
	Scrub typhus(Tsutsugamushi disease)					2	2	97
	Dengue fever	1	1			10		30
	Eastern equine encephalitis							
	Avian influenza (excluding H5N1)							
	Nipah virus infection							
	Japanese spotted fever						2	22
	Japanese encephalitis							
	Epidemic typhus							
	Hantavirus pulmonary syndrome							
	Herpes B virus infection							
	Glanders							
	Brucellosis							1
	Venezuelan equine encephalitis							
Hendra virus infection								
Botulism								
Malaria			1		13		24	
Tularemia								
Lyme disease								
Lyssavirus infection(excluding rabies)								
Rift valley fever								
Melioidosis								
Legionellosis	1	1	1		24	15	284	
Leptospirosis							2	
Rocky mountain spotted fever								

Category	Diseases	Tokyo				Japan		
		22nd	23rd	24th	25th	Cum 2009	25th	Cum 2009
V	Amebiasis	1	3	2	1	63	9	391
	Viral hepatitis(excluding hepatitis A and E)	3	1	2		24	2	102
	Acute encephalitis(excluding JE and WNE)		1			11	1	105
	Cryptosporidiosis					1		2
	Creutzfeldt-Jakob disease		2			10	2	59
	Severe invasive streptococcal infections(TSLS)		1		1	8	3	69
	Acquired immunodeficiency syndrome (AIDS)	15	16	8	13	237	14	687
	Giardiasis					15		39
	Meningococcal meningitis	1				1		9
	Congenital rubella syndrome							
	Syphilis	6	7	4	4	106	5	344
	Tetanus					3	3	48
	Vancomycin-resistant S. aureus infection							
	Vancomycin-resistant Enterococcus infection			1		6	1	44
	Rubella	1	2			7	3	95
Measles	2	4	2	3	61	11	419	
Novel Flu	Novel influenza (swine-origin influenza A/H1N1) *		6	30	28	67	243	838

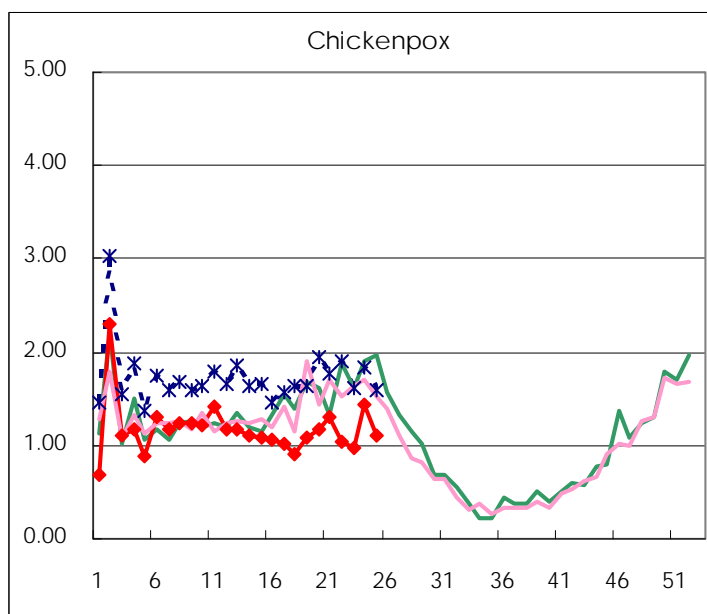
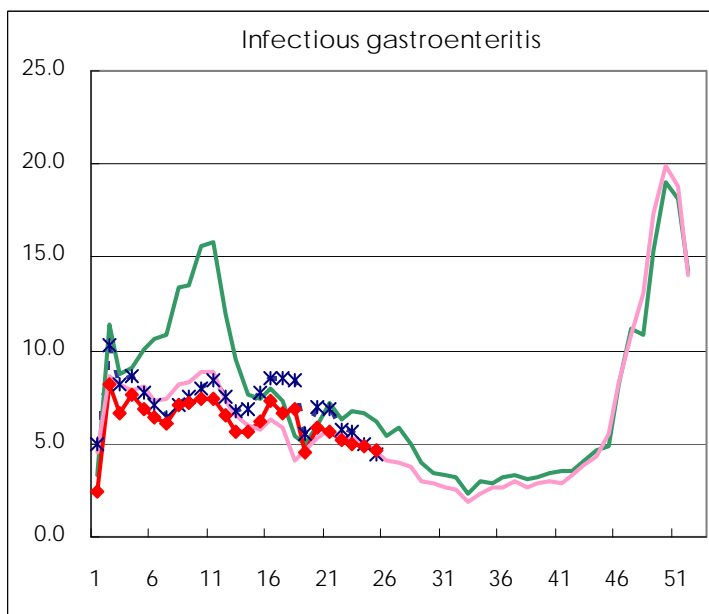
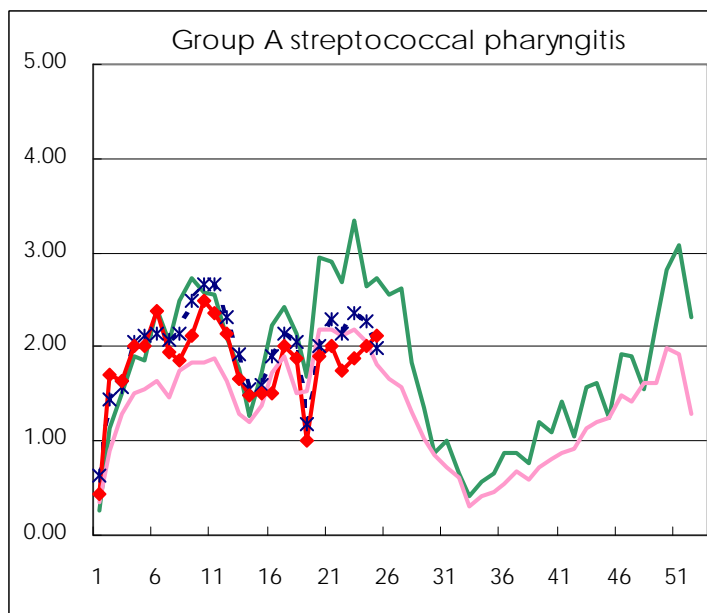
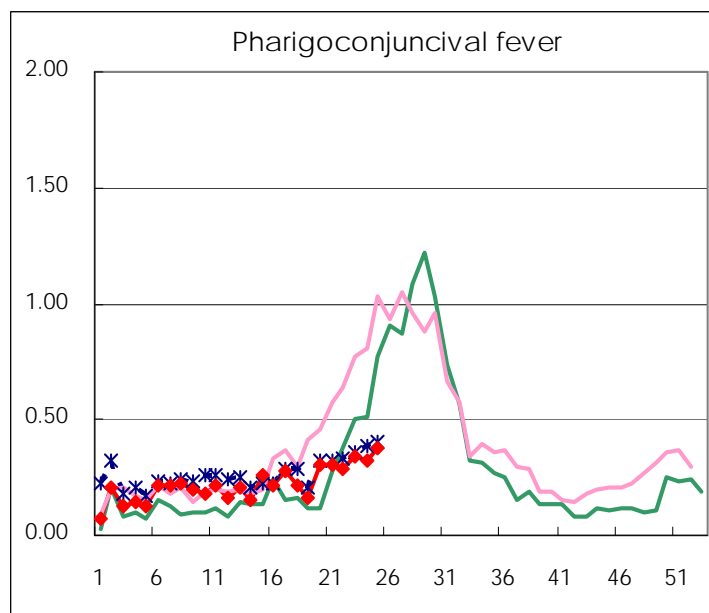
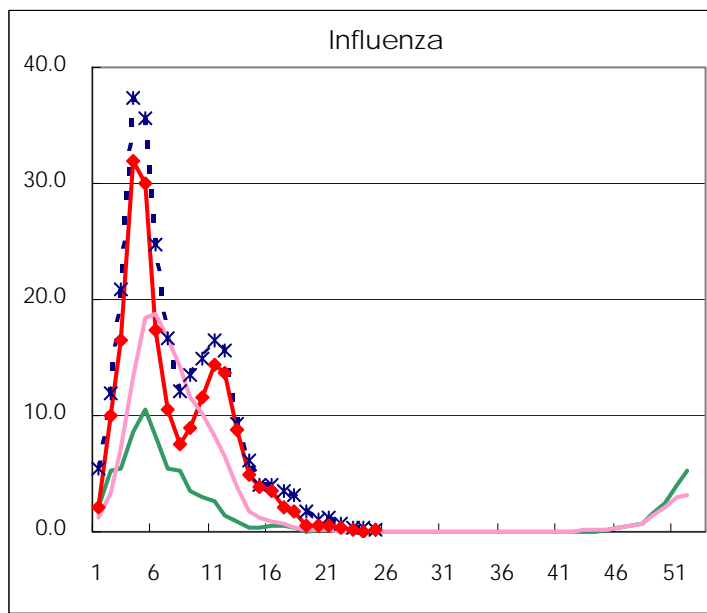
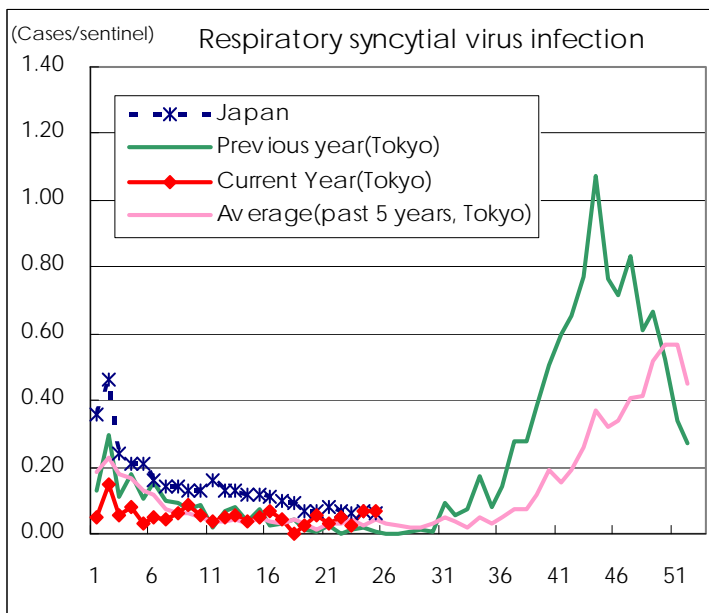
* laboratory confirmed cases

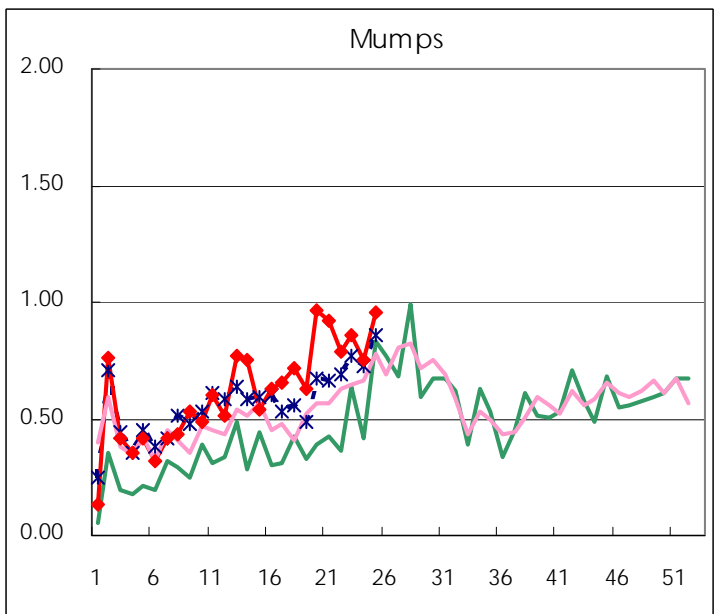
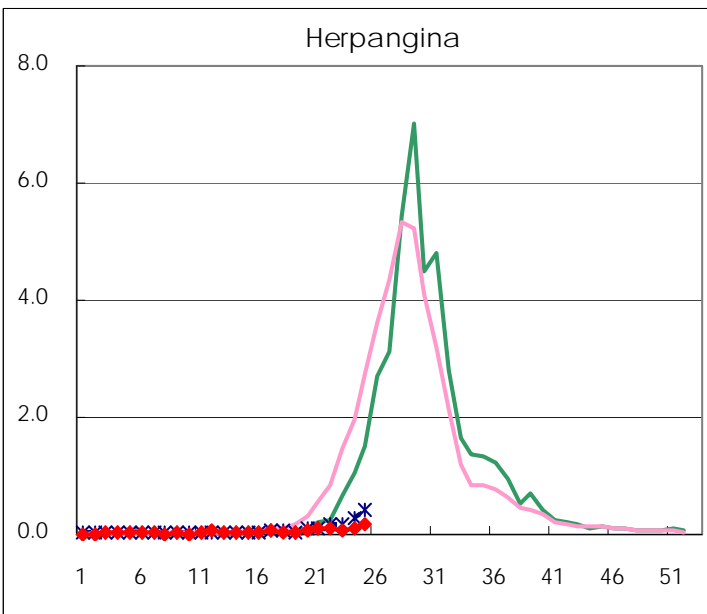
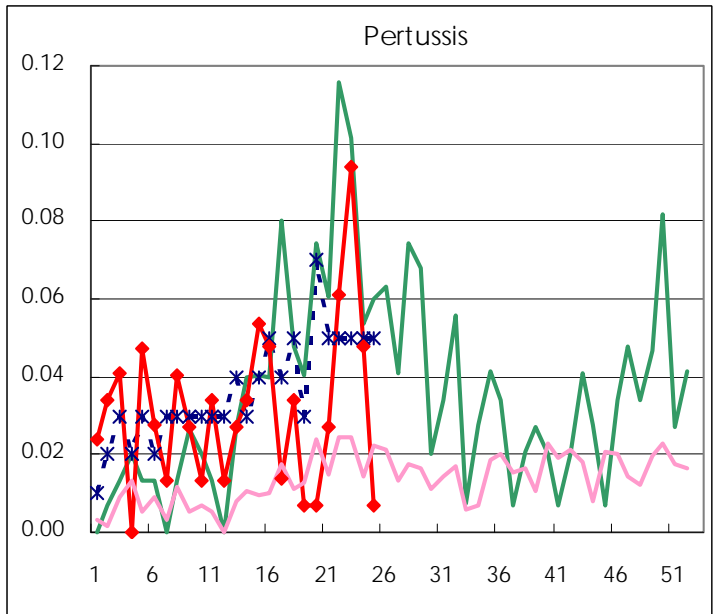
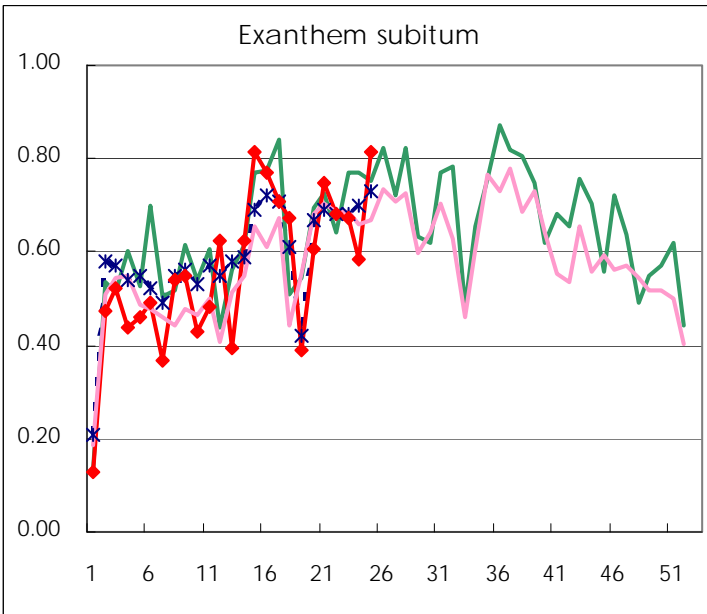
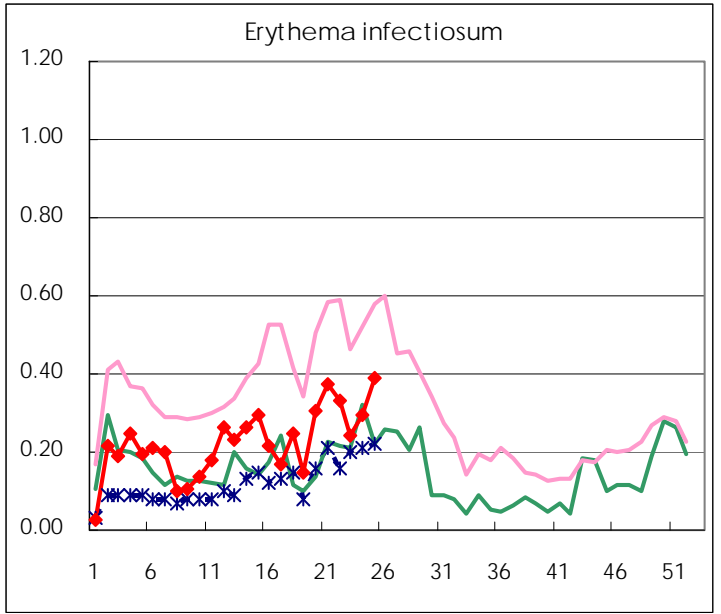
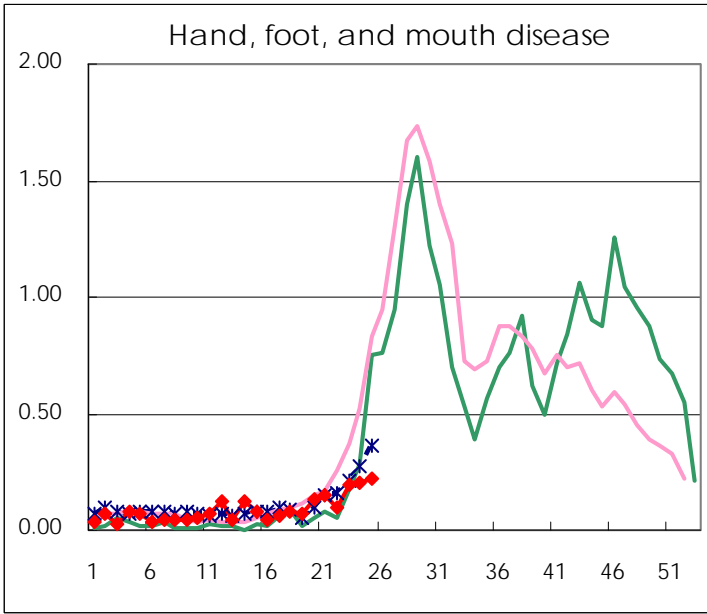
Number of patients with the diseases to be reported
by the designated clinics and hospitals

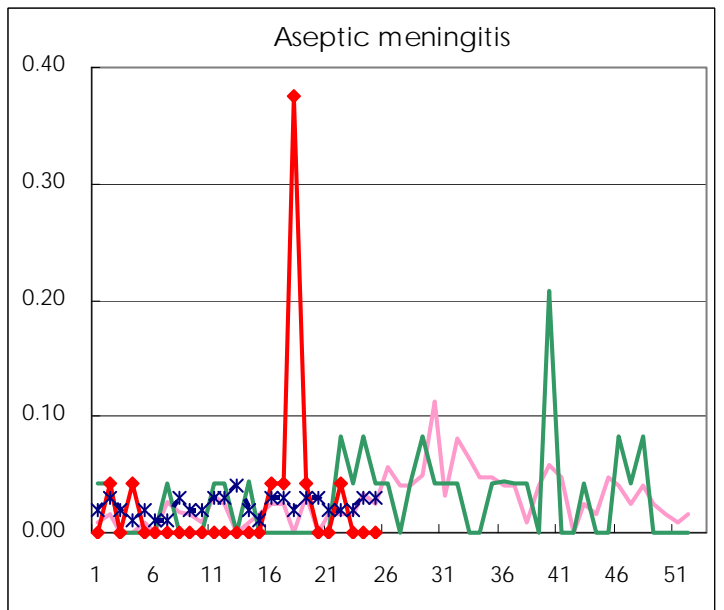
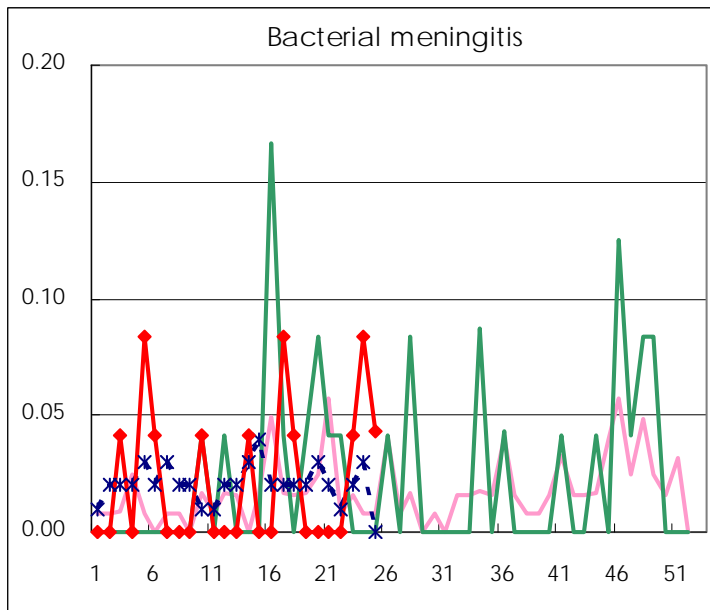
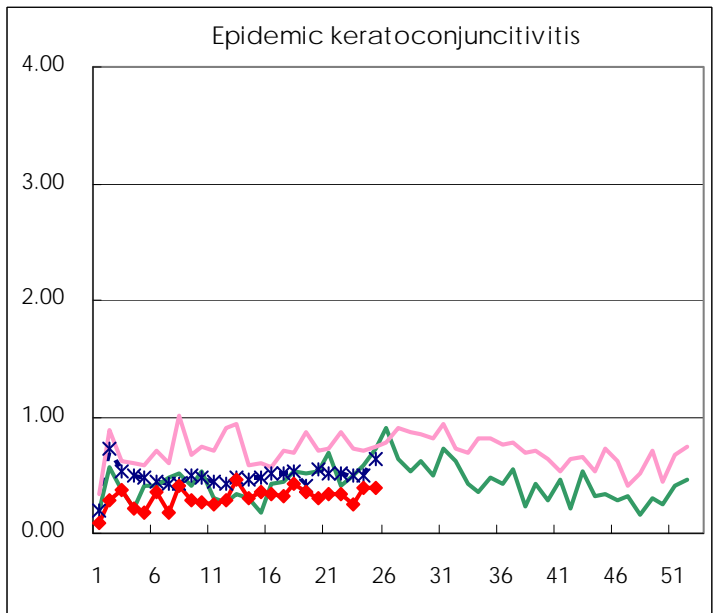
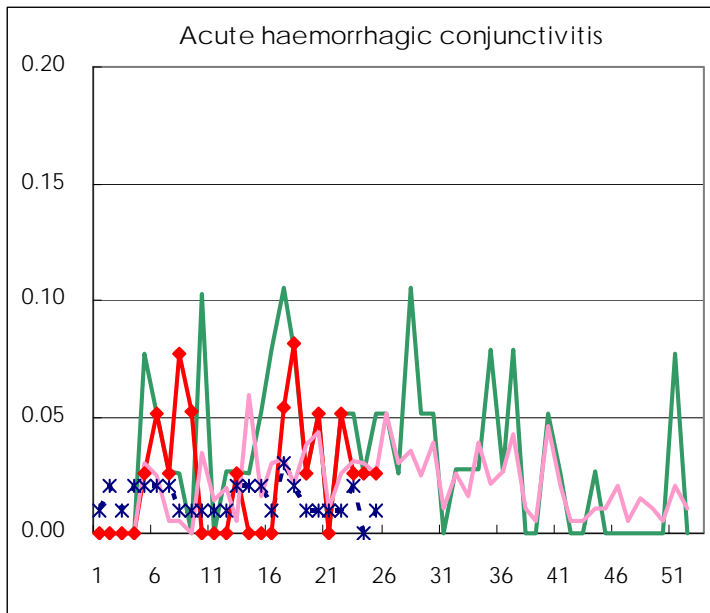
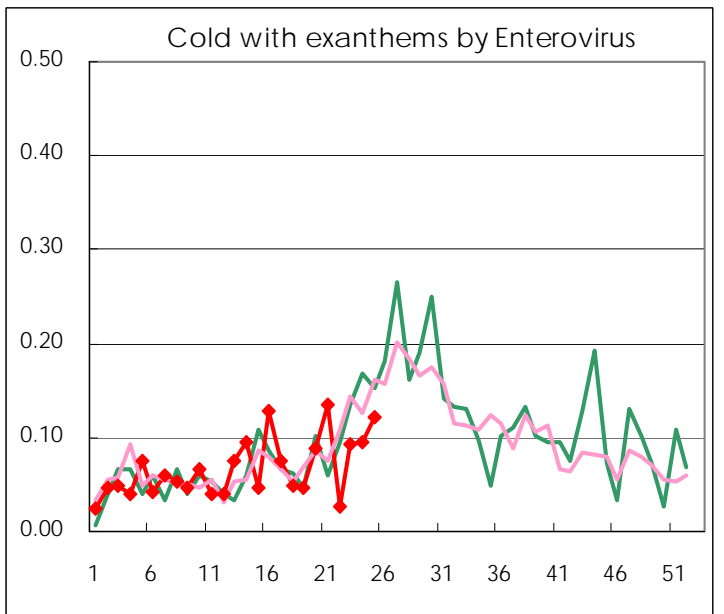
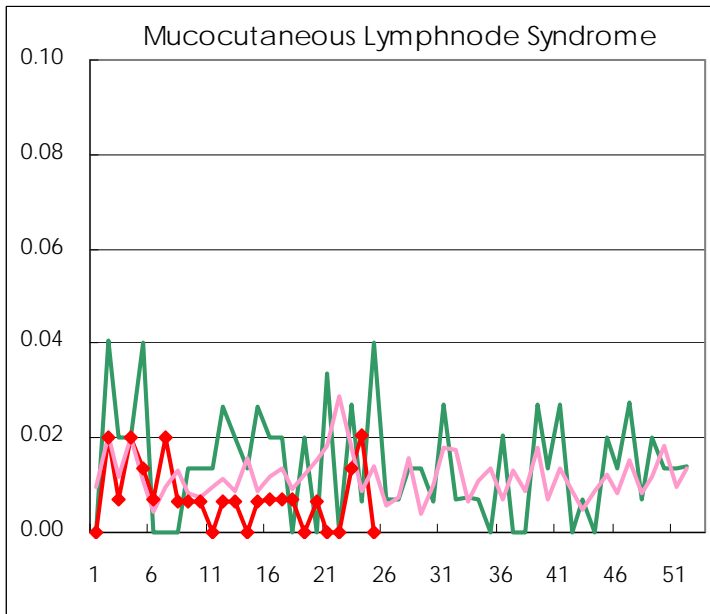
Diseases	2009				
	22nd	23rd	24th	25th	/sentinel
Respiratory syncytial virus infection	7	4	10	10	0.07
Pharyngoconjunctival fever	42	51	48	55	0.37
Group A streptococcal pharyngitis	257	279	294	310	2.11
Infectious gastroenteritis	766	743	723	676	4.60
Chickenpox	154	146	211	164	1.12
Hand, foot, and mouth disease	14	29	30	33	0.22
Erythema infectiosum	49	36	43	57	0.39
Exanthem subitum	101	100	86	120	0.82
Pertussis	9	14	7	1	0.01
Herpangina	16	11	16	27	0.18
Mumps	116	128	111	141	0.96
Cold with exanthems by Enterovirus	4	14	14	18	0.12
Mucocutaneous Lymphnode Syndrome		2	3		
Influenza	84	42	23	30	0.11
Acute hemorrhagic conjunctivitis	2	1	1	1	0.03
Epidemic keratoconjunctivitis	13	10	15	15	0.38
Bacterial meningitis		1	2	1	0.04
Aseptic meningitis	1				
Mycoplasma pneumonia	9	12	7	7	0.30
Chlamydial pneumonia (excluding psittacosis)	3	3	1	1	0.04

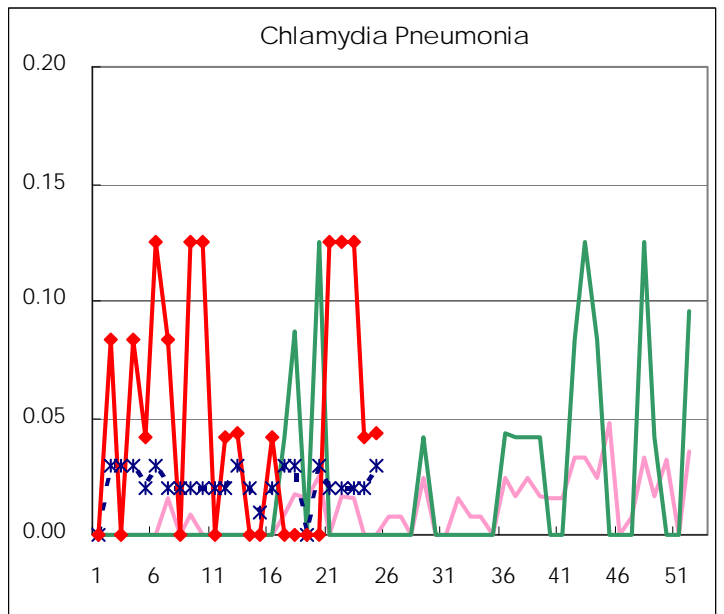
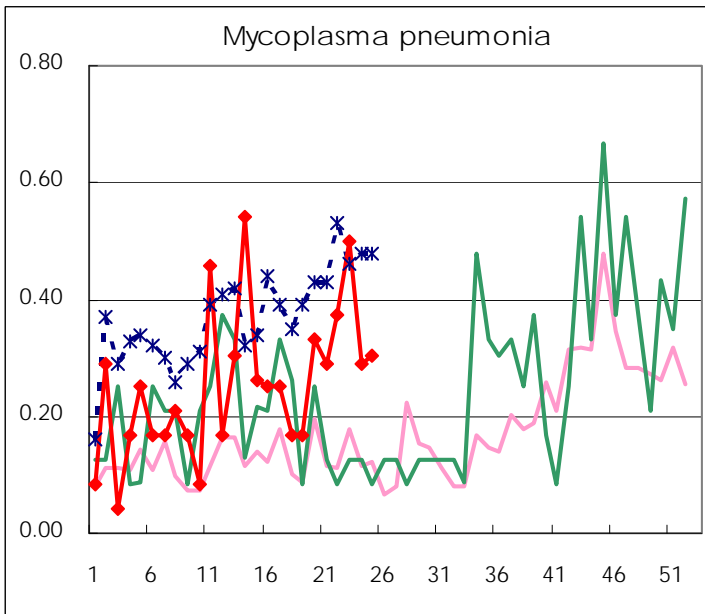
(Blank means 0.)

Disease Trend Graph (weekly reported cases per sentinel in comparison)









Number of sentinel facilities
for weekly reporting

Types of sentinels	Number of sentinels	Sentinels having reported
Pediatric	150	147
Influenza	290	284
Ophthalmic	39	39
Specially-designated	24	23

Tokyo Metropolitan Government
Infectious Disease Surveillance Center