
INFECTIOUS DISEASES WEEKLY REPORT

TOKYO IDWR

Tokyo Metropolitan Infectious Disease Surveillance Center

9 July 2009 / Number 27

Surveillance System in Tokyo, Japan

The infectious diseases which all physicians must report

All physicians must report to health centers the incidence of the diseases which are shown at page one. Health centers electronically report the individual cases to Tokyo Metropolitan Infectious Disease Surveillance Center.

The infectious diseases required to be reported by the sentinels

The numbers of patients who visit the sentinel clinics or hospitals during a week are reported to health centers in Tokyo. And they electronically report the numbers to Tokyo Metropolitan Infectious Disease Surveillance Center. We have about 400 sentinel clinics and hospitals in Tokyo.

1st Week is early January and 52nd Week is end of December.

Tokyo Metropolitan Institute of Public Health
Epidemiological Information Office

TEL:81-3-3363-3213 FAX:81-3-5332-7365

e-mail:idsc@tokyo-eiken.go.jp

URL:idsc.tokyo-eiken.go.jp/

Number of patients with the diseases which all physicians must report

Category	Diseases	Tokyo				Cum 2009	Japan	
		24th	25th	26th	27th		27th	Cum 2009
I	Ebola hemorrhagic fever							
	Crimean-Congo hemorrhagic fever							
	Smallpox							
	South American hemorrhagic fever							
	Plague							
	Marburg disease							
	Lassa fever							
II	Acute poliomyelitis							
	Tuberculosis	64	76	52	50	2066	301	13291
	Diphtheria							
	Severe Acute Respiratory Syndrome(SARS)							
Avian influenza H5N1								
III	Cholera					1		4
	Shigellosis	3			1	19	3	89
	Enterohemorrhagic Escherichia coli infection	8	6	8	6	65	80	948
	Typhoid fever			1	1	9	1	17
	Paratyphoid fever					4	1	10
IV	Hepatitis E				1	6	1	25
	West Nile fever							
	Hepatitis A	1		1		9		70
	Echinococcosis					1		11
	Yellow fever							
	Psittacosis					1		10
	Omsk hemorrhagic fever							
	Relapsing fever							
	Kyasanur forest disease							
	Q fever	1				1		2
	Rabies							
	Coccidioidomycosis					1		2
	Monkeypox							
	Hemorrhagic fever with renal syndrome							
	Western equine encephalitis							
	Tick-borne encephalitis							
	Anthrax							
	Scrub typhus(Tsutsugamushi disease)					2		100
	Dengue fever					10	1	32
	Eastern equine encephalitis							
	Avian influenza (excluding H5N1)							
	Nipah virus infection							
	Japanese spotted fever						2	30
	Japanese encephalitis							
	Epidemic typhus							
	Hantavirus pulmonary syndrome							
	Herpes B virus infection							
	Glanders							
	Brucellosis							1
	Venezuelan equine encephalitis							
Hendra virus infection								
Botulism								
Malaria	1		1		14	1	26	
Tularemia								
Lyme disease							1	
Lyssavirus infection(excluding rabies)								
Rift valley fever								
Melioidosis								
Legionellosis	1		1		25	7	311	
Leptospirosis							3	
Rocky mountain spotted fever								

Category	Diseases	Tokyo					Japan	
		24th	25th	26th	27th	Cum 2009	27th	Cum 2009
V	Amebiasis	2	1	1	4	68	11	418
	Viral hepatitis(excluding hepatitis A and E)	2				24	3	107
	Acute encephalitis(excluding JE and WNE)				1	12	2	110
	Cryptosporidiosis					1		2
	Creutzfeldt-Jakob disease					10		63
	Severe invasive streptococcal infections(TSLS)		1			8		71
	Acquired immunodeficiency syndrome (AIDS)	8	13	14	7	258	16	756
	Giardiasis			1		16	1	42
	Meningococcal meningitis					1		9
	Congenital rubella syndrome							
	Syphilis	4	3	6	3	114	8	381
	Tetanus					3	1	55
	Vancomycin-resistant S. aureus infection						1	1
	Vancomycin-resistant Enterococcus infection	1		1		7	2	48
	Rubella					7	1	102
Measles	2	3	3	5	69	15	459	
Novel Flu	Novel influenza (swine-origin influenza A/H1N1) *	30	28	57	30	154	568	1764

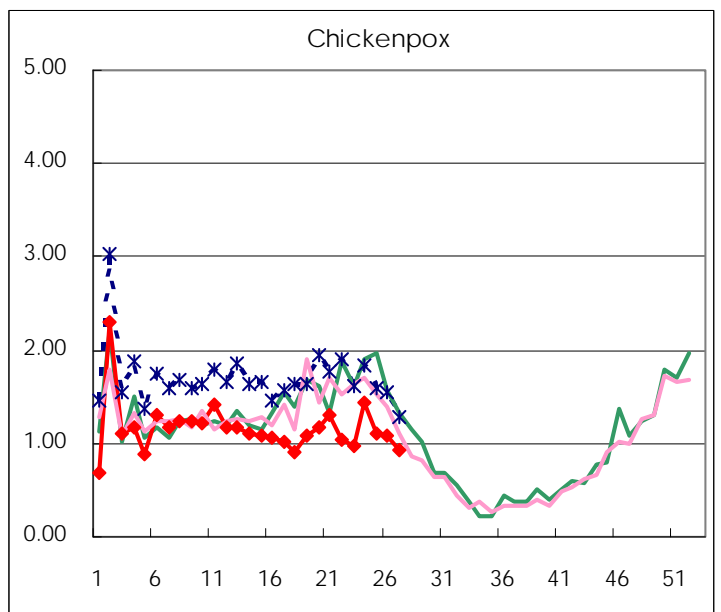
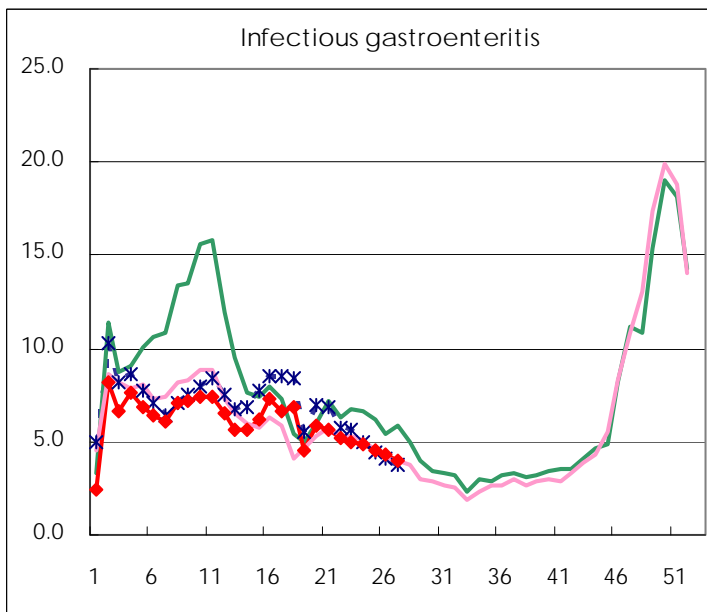
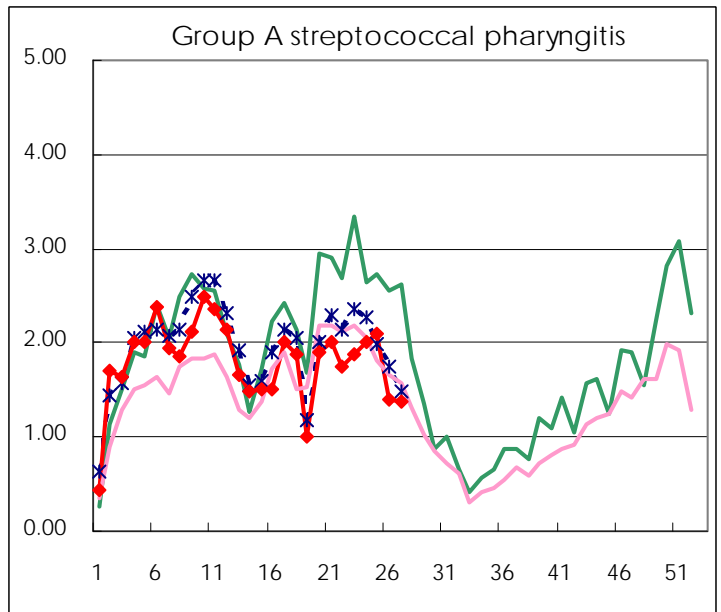
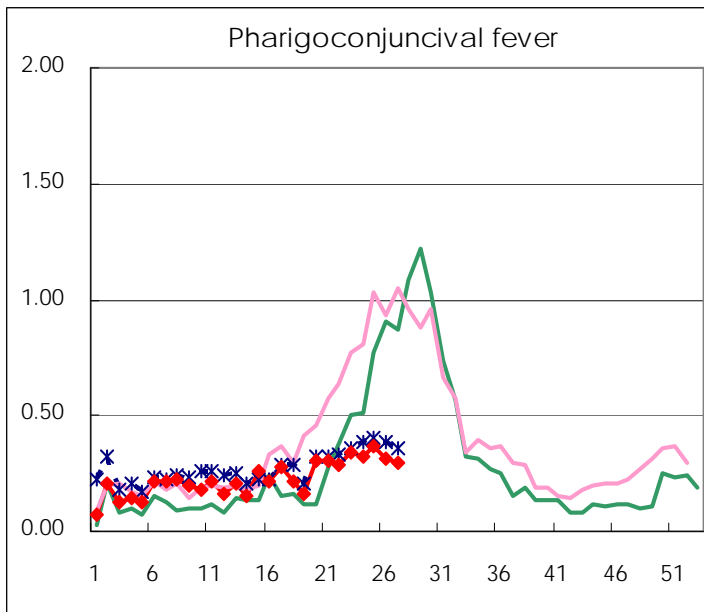
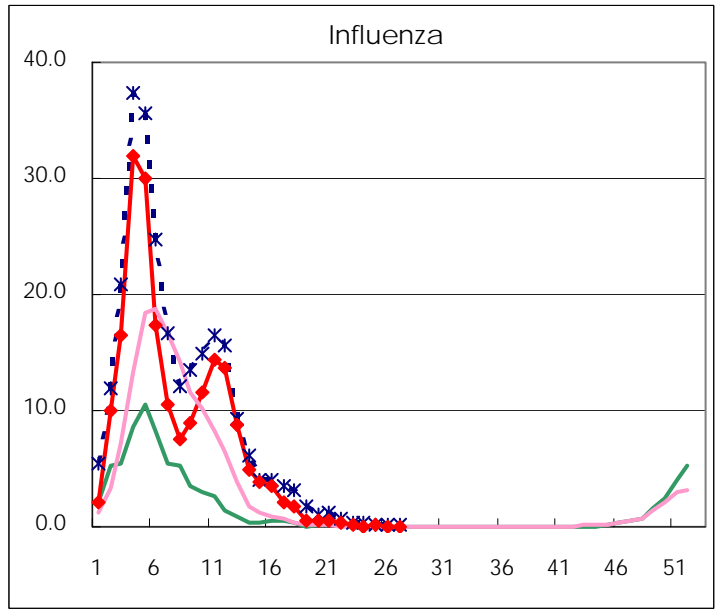
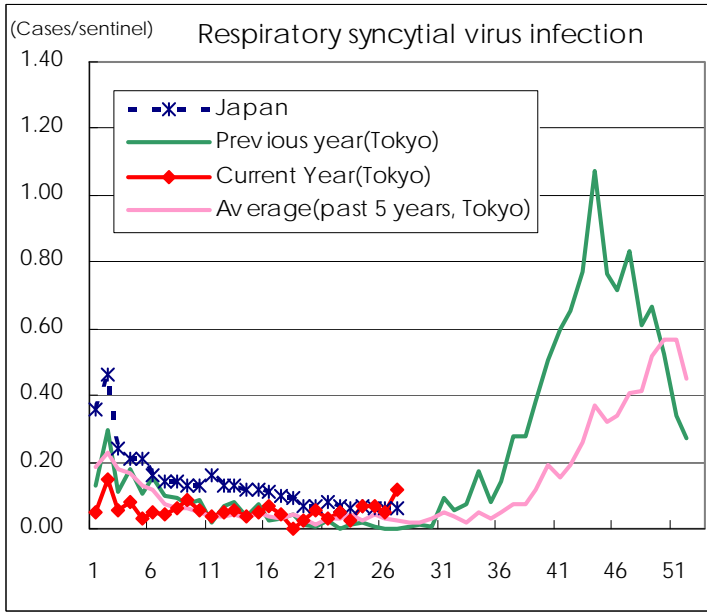
* laboratory confirmed cases

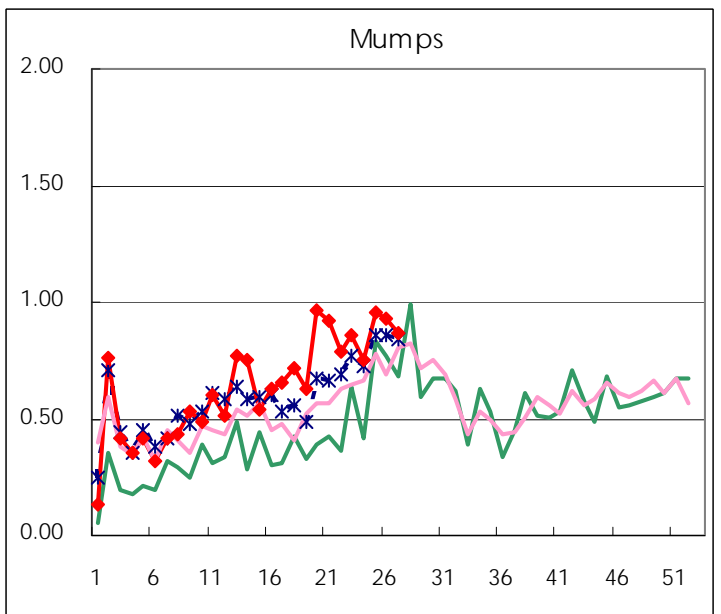
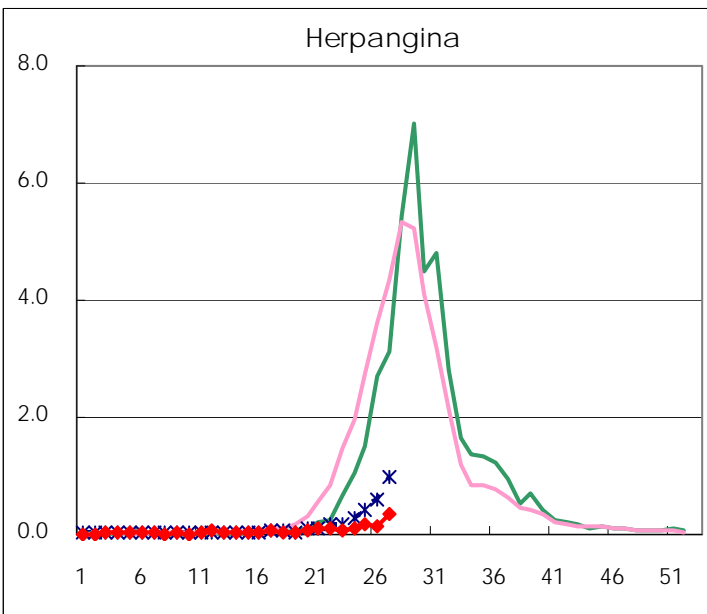
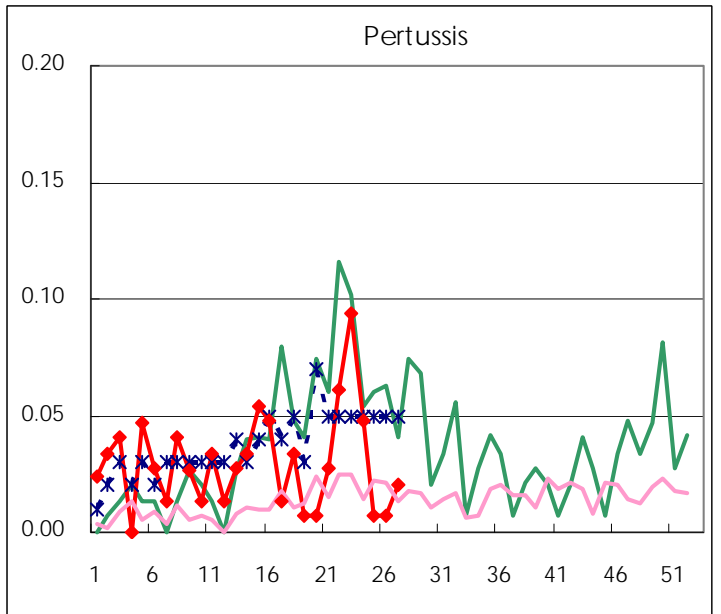
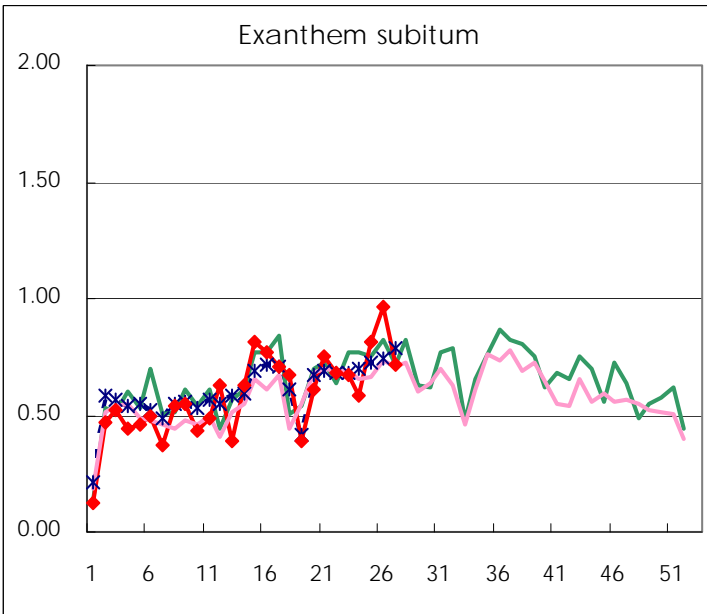
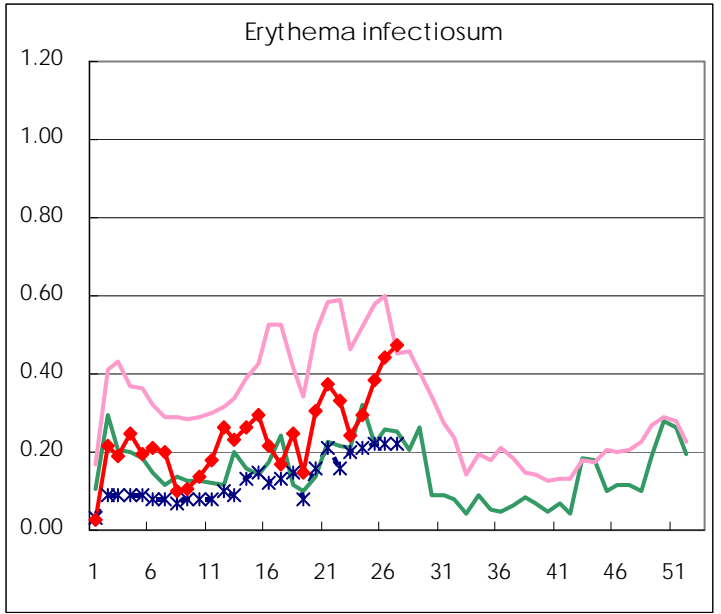
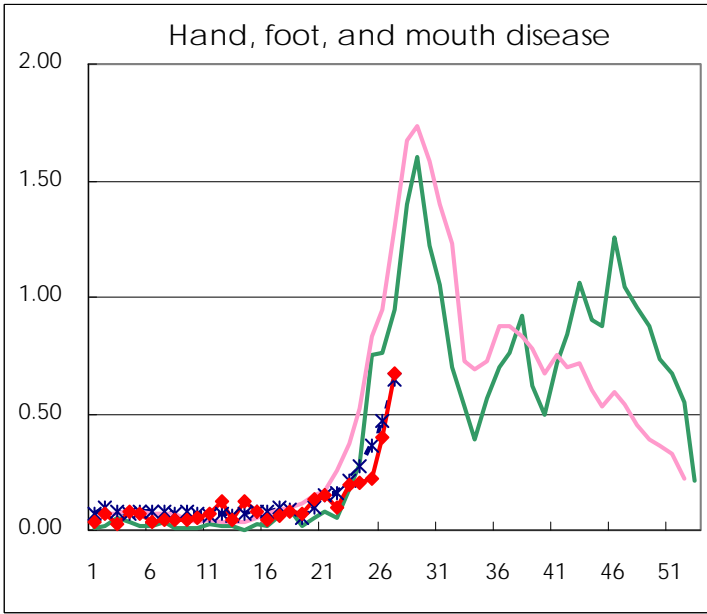
Number of patients with the diseases to be reported
by the designated clinics and hospitals

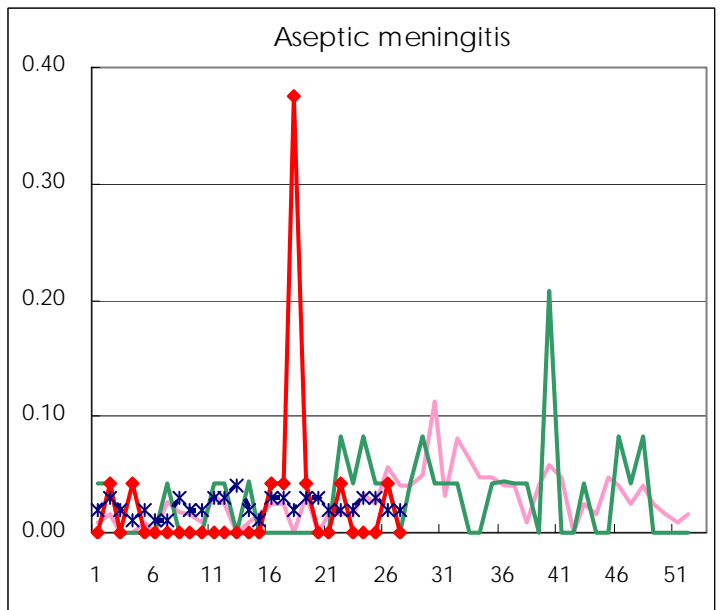
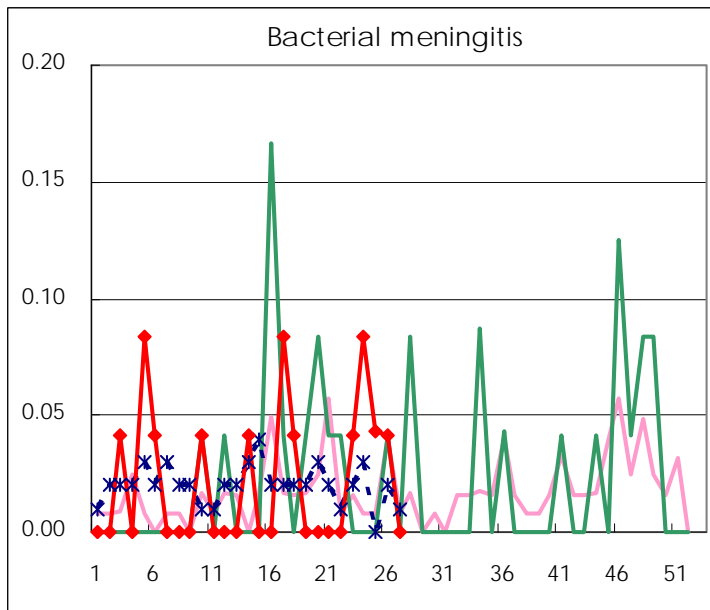
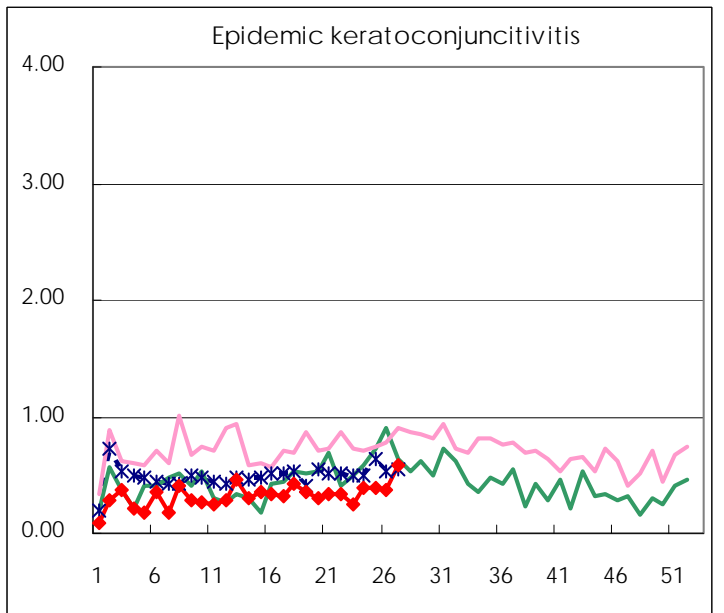
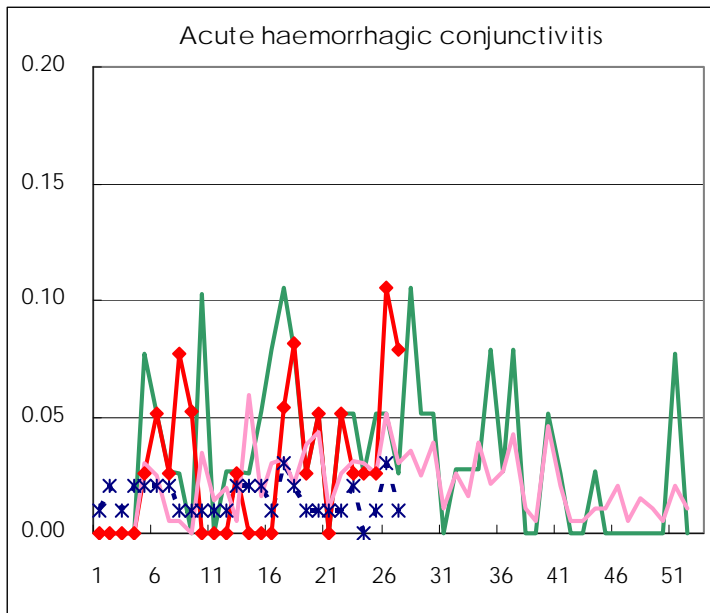
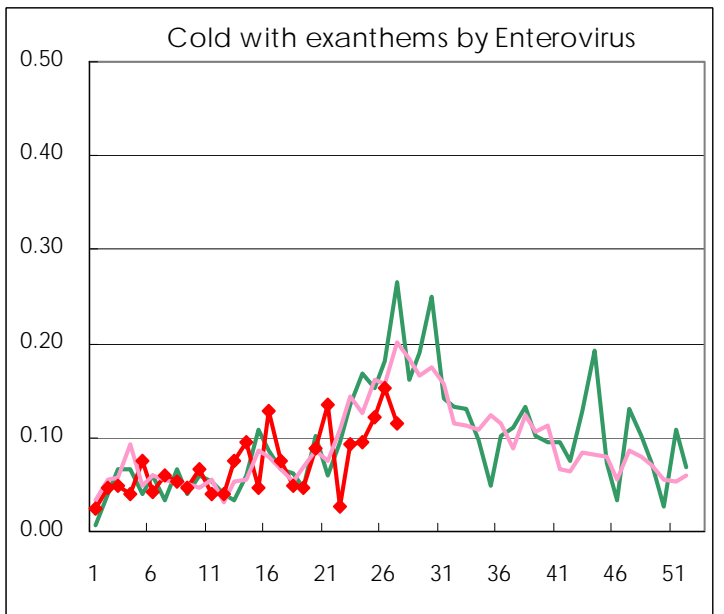
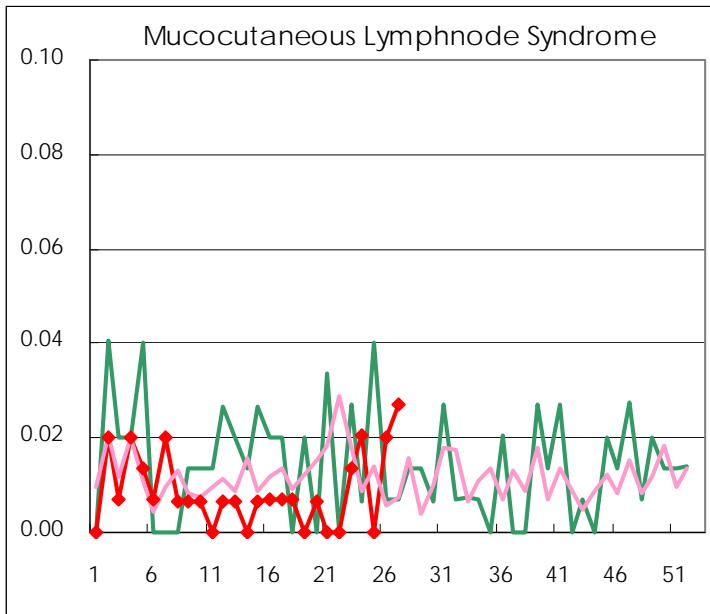
Diseases	2009				
	24th	25th	26th	27th	/sentinel
Respiratory syncytial virus infection	10	10	7	17	0.12
Pharyngoconjunctival fever	48	55	47	44	0.30
Group A streptococcal pharyngitis	294	311	209	203	1.38
Infectious gastroenteritis	723	676	653	590	4.01
Chickenpox	211	164	162	136	0.93
Hand, foot, and mouth disease	30	33	60	99	0.67
Erythema infectiosum	43	57	66	70	0.48
Exanthem subitum	86	120	145	105	0.71
Pertussis	7	1	1	3	0.02
Herpangina	16	27	22	51	0.35
Mumps	111	141	140	127	0.86
Cold with exanthems by Enterovirus	14	18	23	17	0.12
Mucocutaneous Lymphnode Syndrome	3		3	4	0.03
Influenza	23	30	24	20	0.07
Acute hemorrhagic conjunctivitis	1	1	4	3	0.08
Epidemic keratoconjunctivitis	15	15	14	22	0.58
Bacterial meningitis	2	1	1		
Aseptic meningitis			1		
Mycoplasma pneumonia	7	7	2	9	0.39
Chlamydial pneumonia (excluding psittacosis)	1	1	1	1	0.04

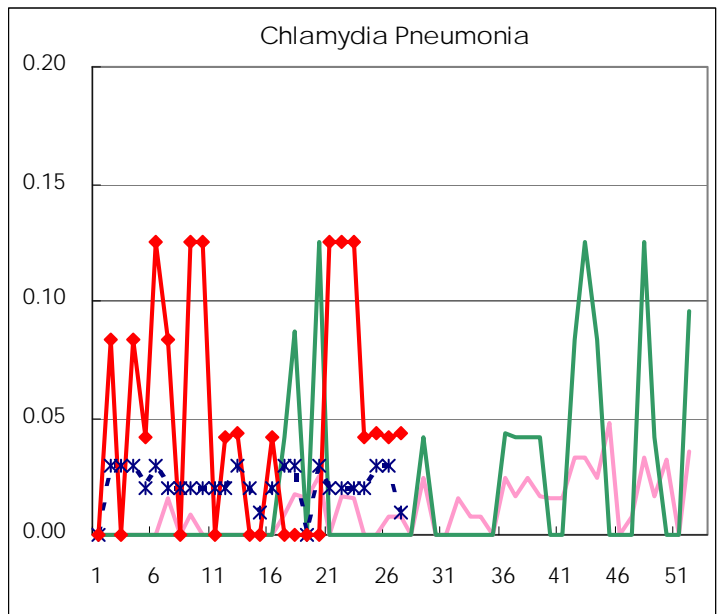
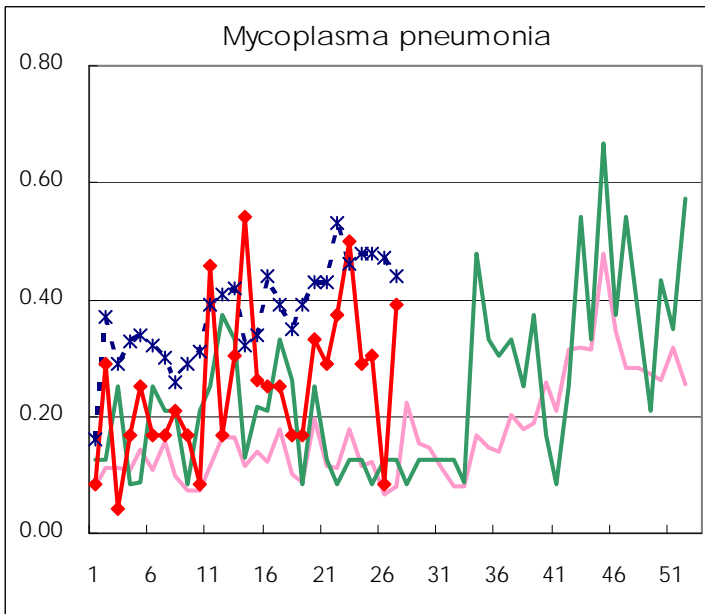
(Blank means 0.)

Disease Trend Graph (weekly reported cases per sentinel in comparison)









Number of sentinel facilities
for weekly reporting

Types of sentinels	Number of sentinels	Sentinels having reported
Pediatric	150	147
Influenza	290	287
Ophthalmic	39	38
Specially-designated	24	23

Tokyo Metropolitan Government
Infectious Disease Surveillance Center