
INFECTIOUS DISEASES WEEKLY REPORT

TOKYO IDWR

Tokyo Metropolitan Infectious Disease Surveillance Center

16 July 2009 / Number 28

Surveillance System in Tokyo, Japan

The infectious diseases which all physicians must report

All physicians must report to health centers the incidence of the diseases which are shown at page one. Health centers electronically report the individual cases to Tokyo Metropolitan Infectious Disease Surveillance Center.

The infectious diseases required to be reported by the sentinels

The numbers of patients who visit the sentinel clinics or hospitals during a week are reported to health centers in Tokyo. And they electronically report the numbers to Tokyo Metropolitan Infectious Disease Surveillance Center. We have about 400 sentinel clinics and hospitals in Tokyo.

1st Week is early January and 52nd Week is end of December.

Tokyo Metropolitan Institute of Public Health
Epidemiological Information Office

TEL:81-3-3363-3213 FAX:81-3-5332-7365

e-mail:idsc@tokyo-eiken.go.jp

URL:idsc.tokyo-eiken.go.jp/

Number of patients with the diseases which all physicians must report

Category	Diseases	Tokyo				Cum 2009	Japan	
		25th	26th	27th	28th		28th	Cum 2009
I	Ebola hemorrhagic fever							
	Crimean-Congo hemorrhagic fever							
	Smallpox							
	South American hemorrhagic fever							
	Plague							
	Marburg disease							
	Lassa fever							
II	Acute poliomyelitis							
	Tuberculosis	81	59	74	50	2157	308	13825
	Diphtheria							
	Severe Acute Respiratory Syndrome(SARS)							
	Avian influenza H5N1							
III	Cholera					1		4
	Shigellosis			1		19	1	90
	Enterohemorrhagic Escherichia coli infection	6	8	7	4	70	97	1,063
	Typhoid fever		1	1		9	1	18
	Paratyphoid fever					4	1	11
IV	Hepatitis E			1		6		26
	West Nile fever							
	Hepatitis A		1			9	2	72
	Echinococcosis					1		13
	Yellow fever							
	Psittacosis					1		10
	Omsk hemorrhagic fever							
	Relapsing fever							
	Kyasanur forest disease							
	Q fever					1		2
	Rabies							
	Coccidioidomycosis					1		2
	Monkeypox							
	Hemorrhagic fever with renal syndrome							
	Western equine encephalitis							
	Tick-borne encephalitis							
	Anthrax							
	Scrub typhus(Tsutsugamushi disease)					2	3	103
	Dengue fever				2	12	3	35
	Eastern equine encephalitis							
	Avian influenza (excluding H5N1)							
	Nipah virus infection							
	Japanese spotted fever						3	34
	Japanese encephalitis							
	Epidemic typhus							
	Hantavirus pulmonary syndrome							
	Herpes B virus infection							
	Glanders							
	Brucellosis							1
	Venezuelan equine encephalitis							
Hendra virus infection								
Botulism								
Malaria		1			14	1	27	
Tularemia								
Lyme disease							1	
Lyssavirus infection(excluding rabies)								
Rift valley fever								
Melioidosis								
Legionellosis		1		1	26	14	330	
Leptospirosis							3	
Rocky mountain spotted fever								

Category	Diseases	Tokyo					Japan	
		25th	26th	27th	28th	Cum 2009	28th	Cum 2009
V	Amebiasis	1	1	4	4	72	7	431
	Viral hepatitis(excluding hepatitis A and E)					24	3	112
	Acute encephalitis(excluding JE and WNE)			1		12	1	113
	Cryptosporidiosis					1		11
	Creutzfeldt-Jakob disease				1	11		66
	Severe invasive streptococcal infections(TSLS)	1				8	1	71
	Acquired immunodeficiency syndrome (AIDS)	13	14	7	5	263	13	781
	Giardiasis		1			16		42
	Meningococcal meningitis					1		9
	Congenital rubella syndrome							
	Syphilis	3	6	3	3	117	5	394
	Tetanus					3	1	56
	Vancomycin-resistant S. aureus infection							
	Vancomycin-resistant Enterococcus infection		1			7	1	49
	Rubella				1	8		103
Measles	3	3	5	1	70	12	473	
Novel Flu	Novel influenza (swine-origin influenza A/H1N1) *	28	57	30	50	204	872	2636

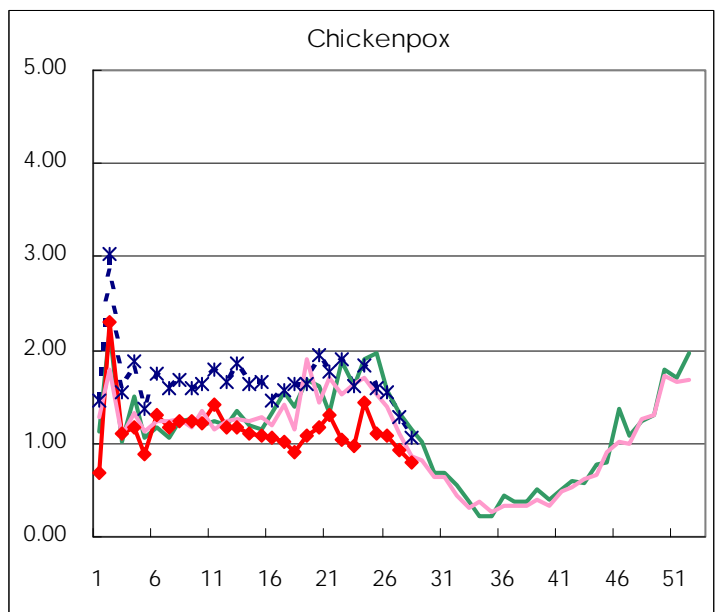
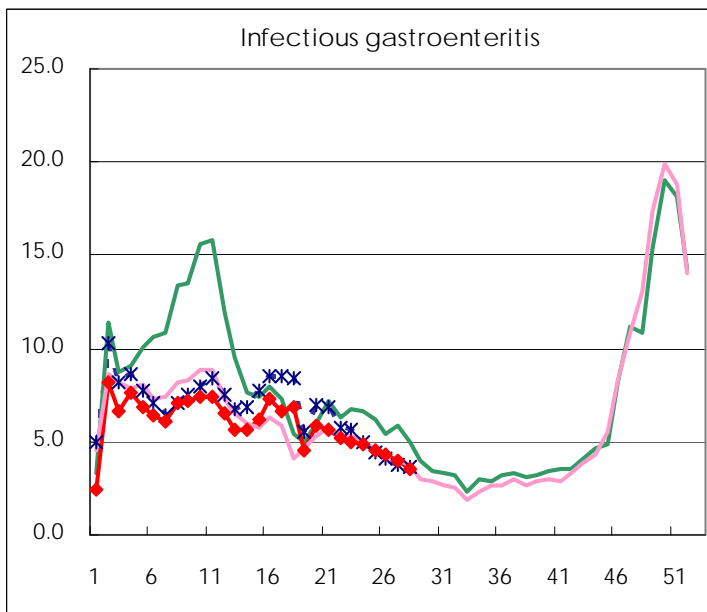
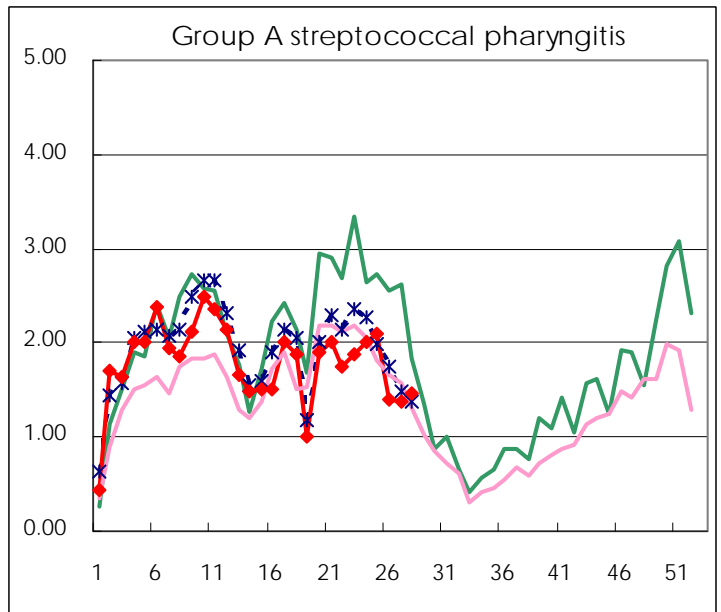
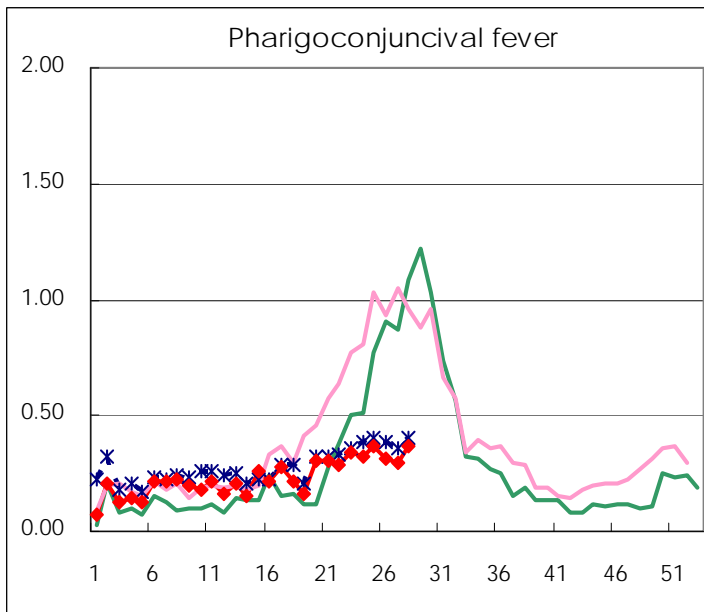
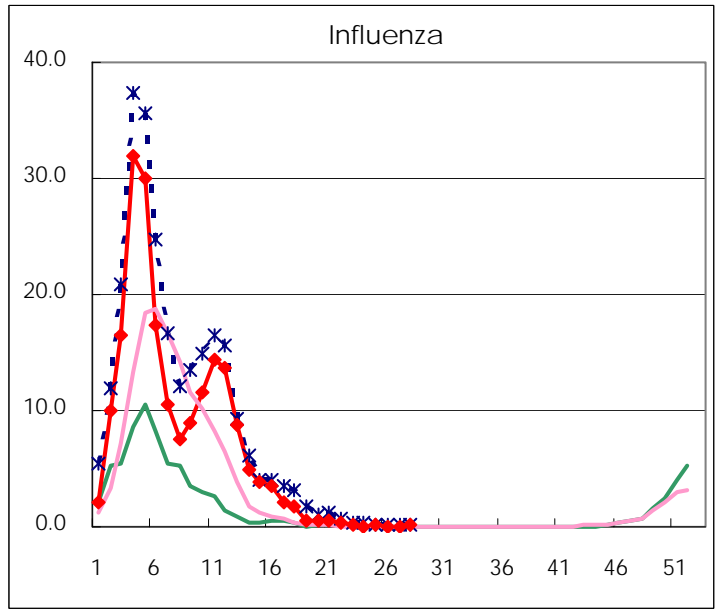
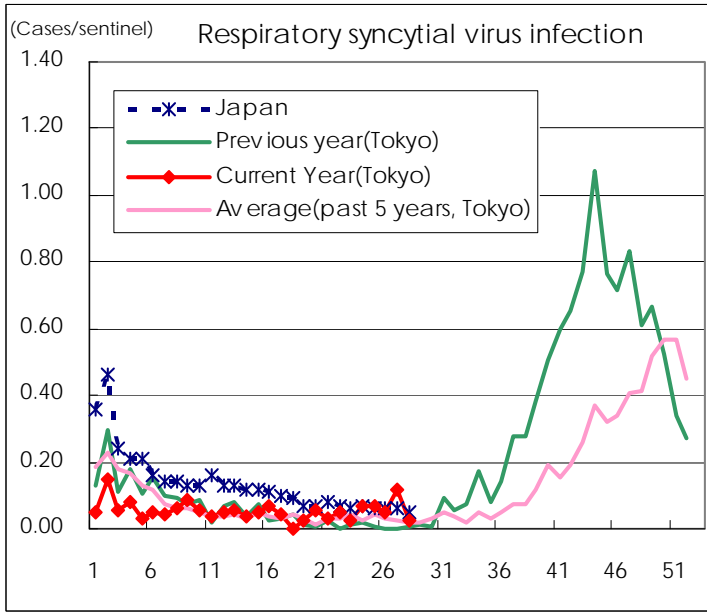
* laboratory confirmed cases

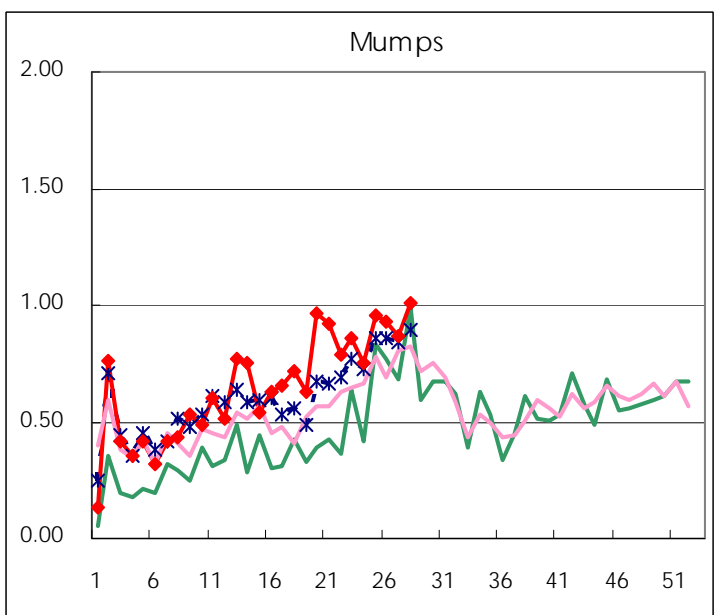
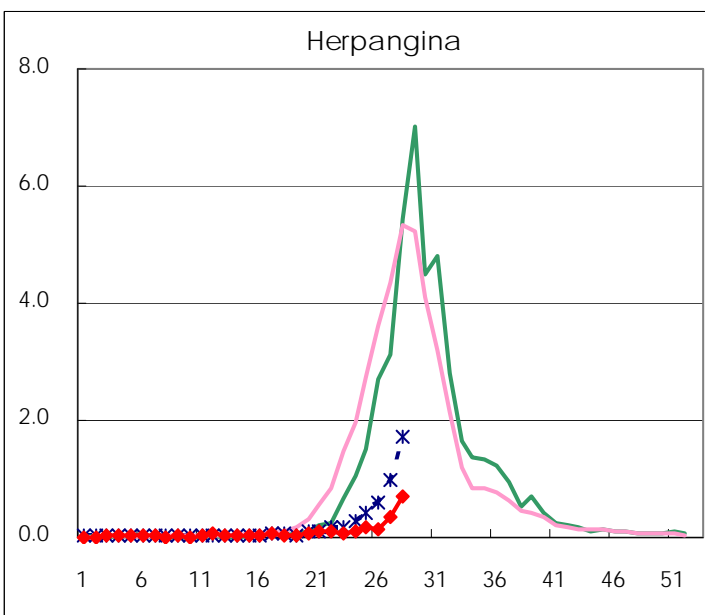
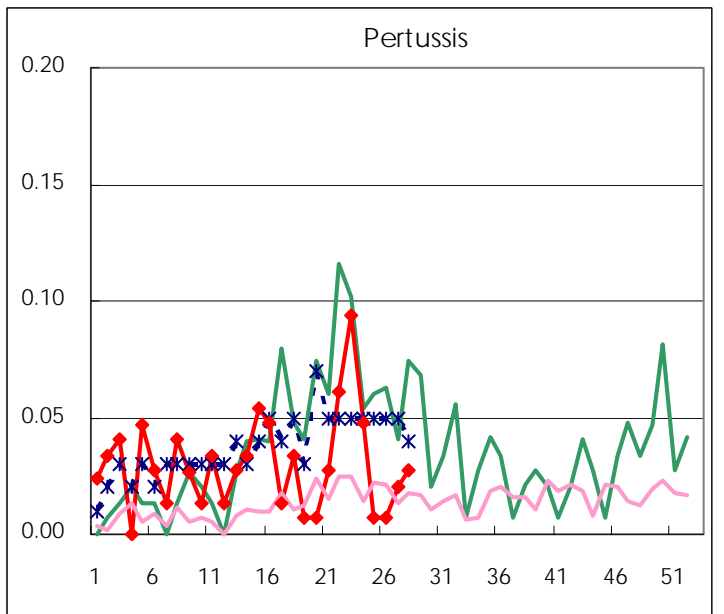
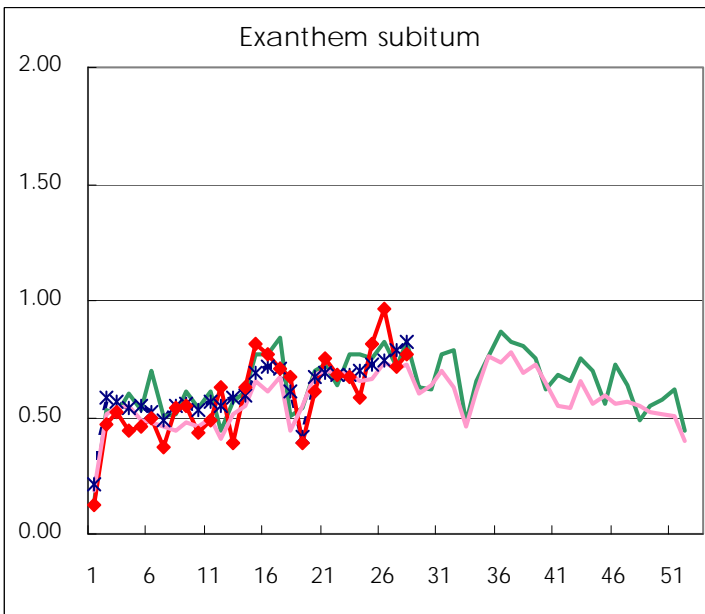
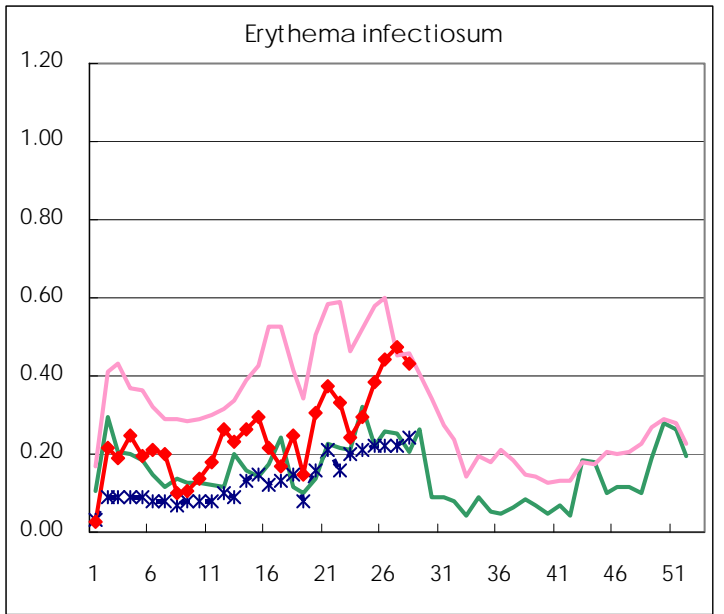
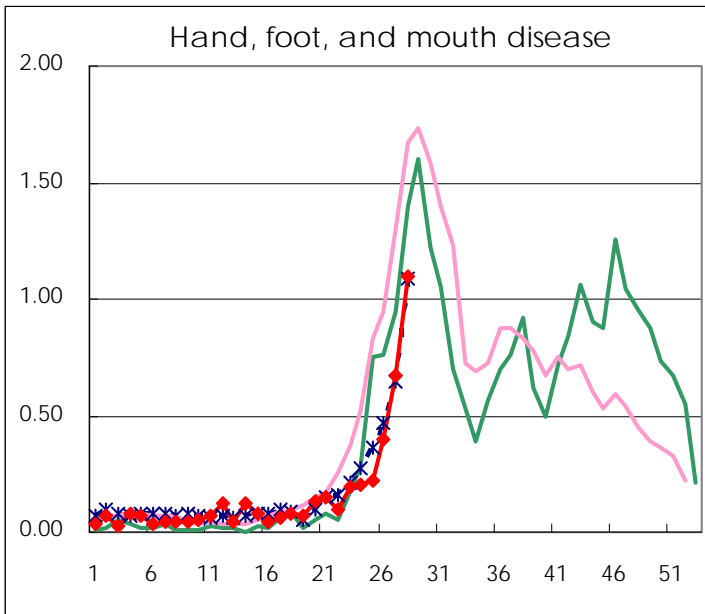
Number of patients with the diseases to be reported
by the designated clinics and hospitals

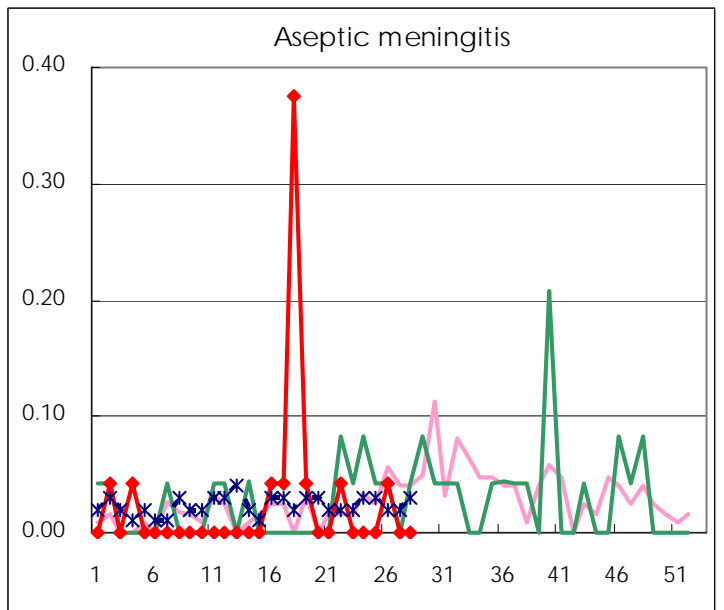
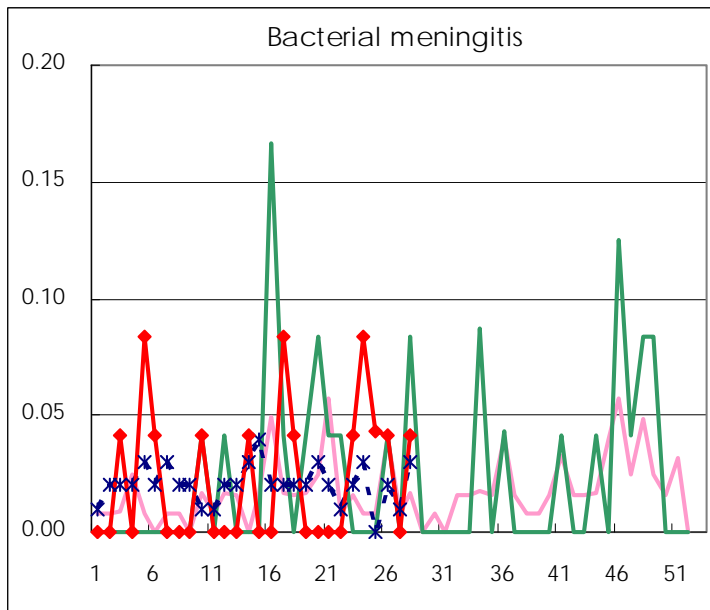
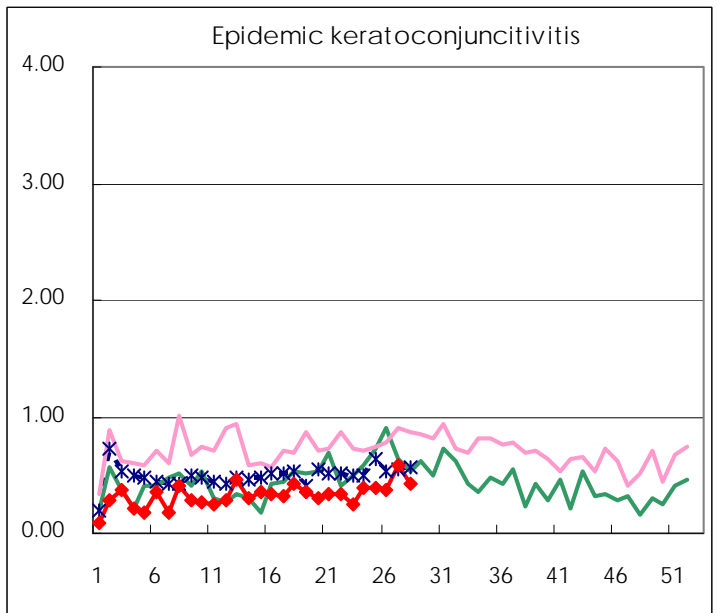
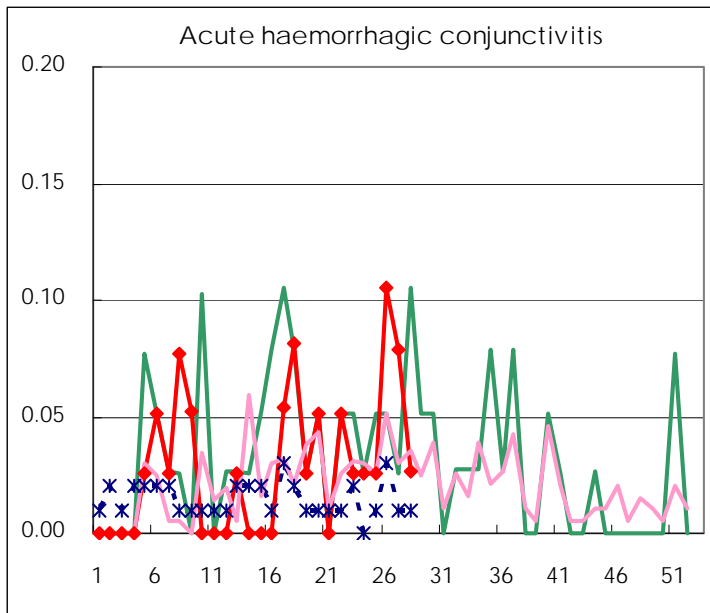
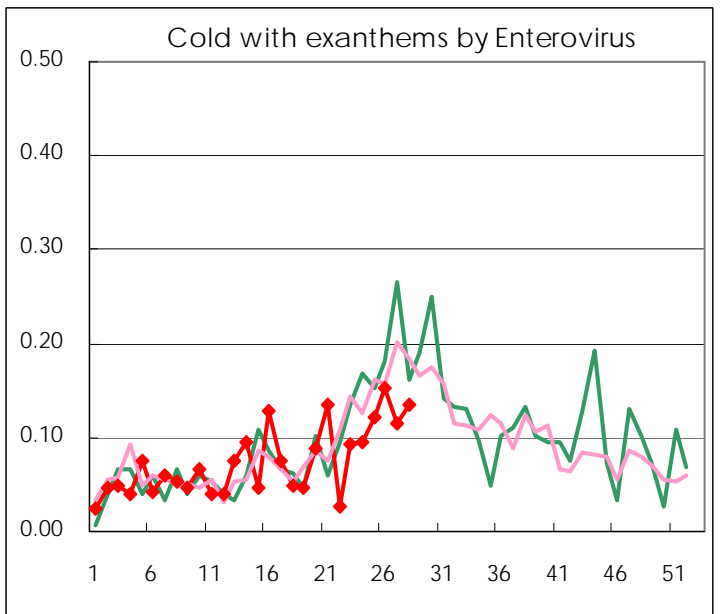
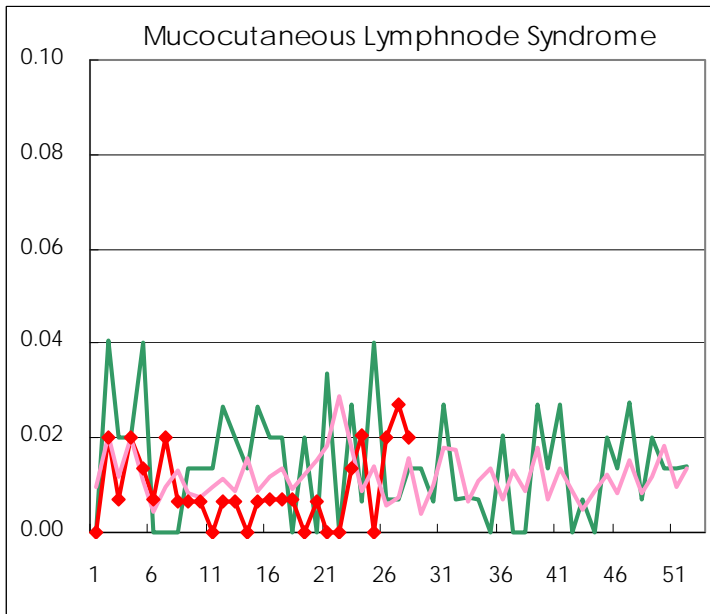
Diseases	2009				
	25th	26th	27th	28th	/sentinel
Respiratory syncytial virus infection	10	7	17	4	0.03
Pharyngoconjunctival fever	55	47	44	54	0.36
Group A streptococcal pharyngitis	311	209	203	218	1.47
Infectious gastroenteritis	676	653	590	525	3.55
Chickenpox	164	162	136	119	0.80
Hand, foot, and mouth disease	33	60	99	162	1.09
Erythema infectiosum	57	66	70	64	0.43
Exanthem subitum	120	145	105	114	0.77
Pertussis	1	1	3	4	0.03
Herpangina	27	22	51	105	0.71
Mumps	141	140	127	149	1.01
Cold with exanthems by Enterovirus	18	23	17	20	0.14
Mucocutaneous Lymphnode Syndrome		3	4	3	0.02
Influenza	30	24	20	48	0.17
Acute hemorrhagic conjunctivitis	1	4	3	1	0.03
Epidemic keratoconjunctivitis	15	14	22	16	0.42
Bacterial meningitis	1	1		1	0.04
Aseptic meningitis		1			
Mycoplasma pneumonia	7	2	9	8	0.33
Chlamydial pneumonia (excluding psittacosis)	1	1	1		

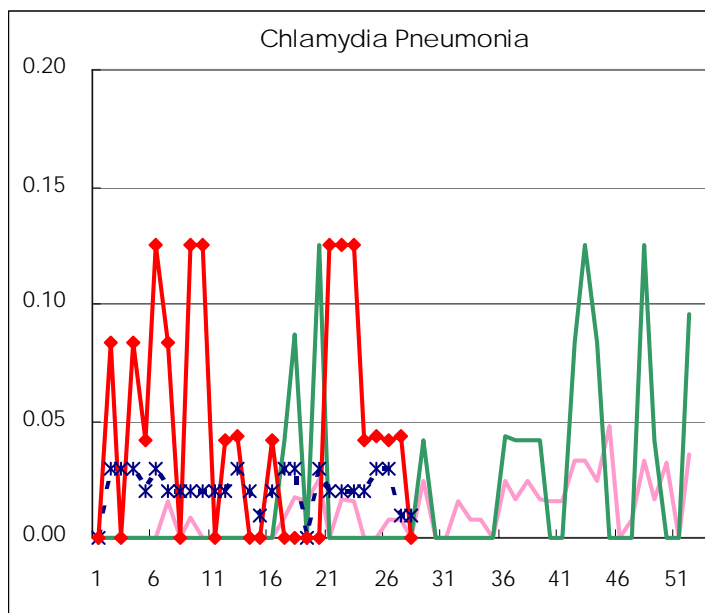
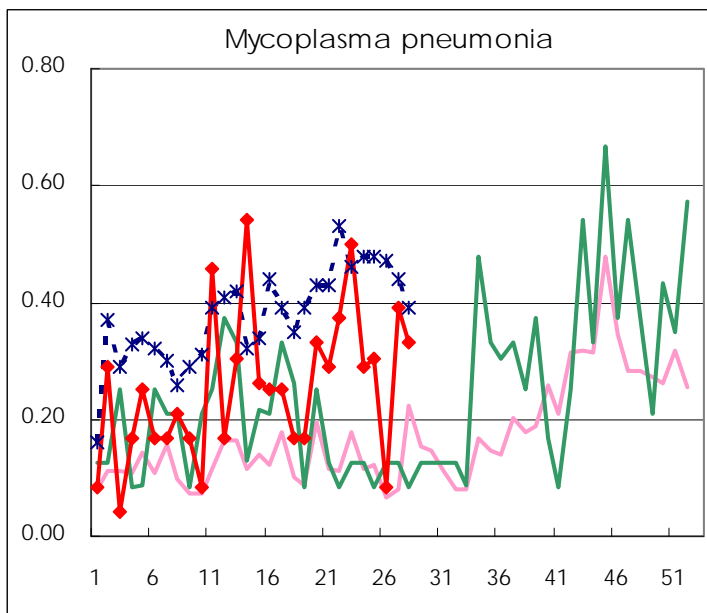
(Blank means 0.)

Disease Trend Graph (weekly reported cases per sentinel in comparison)









Number of sentinel facilities
for weekly reporting

Types of sentinels	Number of sentinels	Sentinels having reported
Pediatric	150	148
Influenza	290	285
Ophthalmic	39	38
Specially-designated	24	24

Tokyo Metropolitan Government
Infectious Disease Surveillance Center