
INFECTIOUS DISEASES WEEKLY REPORT

TOKYO IDWR

Tokyo Metropolitan Infectious Disease Surveillance Center

23 July 2009 / Number 29

Surveillance System in Tokyo, Japan

The infectious diseases which all physicians must report

All physicians must report to health centers the incidence of the diseases which are shown at page one. Health centers electronically report the individual cases to Tokyo Metropolitan Infectious Disease Surveillance Center.

The infectious diseases required to be reported by the sentinels

The numbers of patients who visit the sentinel clinics or hospitals during a week are reported to health centers in Tokyo. And they electronically report the numbers to Tokyo Metropolitan Infectious Disease Surveillance Center. We have about 400 sentinel clinics and hospitals in Tokyo.

1st Week is early January and 52nd Week is end of December.

Tokyo Metropolitan Institute of Public Health
Epidemiological Information Office

TEL:81-3-3363-3213 FAX:81-3-5332-7365

e-mail:idsc@tokyo-eiken.go.jp

URL:idsc.tokyo-eiken.go.jp/

Number of patients with the diseases which all physicians must report

Category	Diseases	Tokyo				Cum 2009	Japan	
		26th	27th	28th	29th		29th	Cum 2009
I	Ebola hemorrhagic fever							
	Crimean-Congo hemorrhagic fever							
	Smallpox							
	South American hemorrhagic fever							
	Plague							
	Marburg disease							
	Lassa fever							
II	Acute poliomyelitis							
	Tuberculosis	63	83	56	49	2228	279	14301
	Diphtheria							
	Severe Acute Respiratory Syndrome(SARS)							
	Avian influenza H5N1							
III	Cholera					1		4
	Shigellosis		1			19	3	94
	Enterohemorrhagic Escherichia coli infection	8	7	4	14	84	138	1,270
	Typhoid fever	1	1			9		18
	Paratyphoid fever					4		11
IV	Hepatitis E		1			6		26
	West Nile fever							
	Hepatitis A	1			1	10	1	74
	Echinococcosis					1	1	14
	Yellow fever							
	Psittacosis					1	1	11
	Omsk hemorrhagic fever							
	Relapsing fever							
	Kyasanur forest disease							
	Q fever					1		2
	Rabies							
	Coccidioidomycosis					1		2
	Monkeypox							
	Hemorrhagic fever with renal syndrome							
	Western equine encephalitis							
	Tick-borne encephalitis							
	Anthrax							
	Scrub typhus(Tsutsugamushi disease)					2	1	104
	Dengue fever			2		12		35
	Eastern equine encephalitis							
	Avian influenza (excluding H5N1)							
	Nipah virus infection							
	Japanese spotted fever						3	37
	Japanese encephalitis							
	Epidemic typhus							
	Hantavirus pulmonary syndrome							
	Herpes B virus infection							
	Glanders							
	Brucellosis							1
	Venezuelan equine encephalitis							
Hendra virus infection								
Botulism								
Malaria	1				14		27	
Tularemia								
Lyme disease							1	
Lyssavirus infection(excluding rabies)								
Rift valley fever								
Melioidosis								
Legionellosis	1		1	2	28	12	351	
Leptospirosis							5	
Rocky mountain spotted fever								

Category	Diseases	Tokyo					Japan	
		26th	27th	28th	29th	Cum 2009	29th	Cum 2009
V	Amebiasis	1	4	4	3	75	9	451
	Viral hepatitis(excluding hepatitis A and E)					24	3	118
	Acute encephalitis(excluding JE and WNE)		1			12	1	116
	Cryptosporidiosis					1		11
	Creutzfeldt-Jakob disease			1		11	1	67
	Severe invasive streptococcal infections(TSLS)					8	1	72
	Acquired immunodeficiency syndrome (AIDS)	14	7	5	11	274	16	815
	Giardiasis	1				16		44
	Meningococcal meningitis					1		8
	Congenital rubella syndrome							
	Syphilis	6	3	3		117	5	405
	Tetanus					3	1	58
	Vancomycin-resistant S. aureus infection							
	Vancomycin-resistant Enterococcus infection	1			1	8		51
	Rubella			1		8	2	105
Measles	3	5	1	1	71	19	491	
Novel Flu	Novel influenza (swine-origin influenza A/H1N1) *	57	30	50	18	222	1610	4246

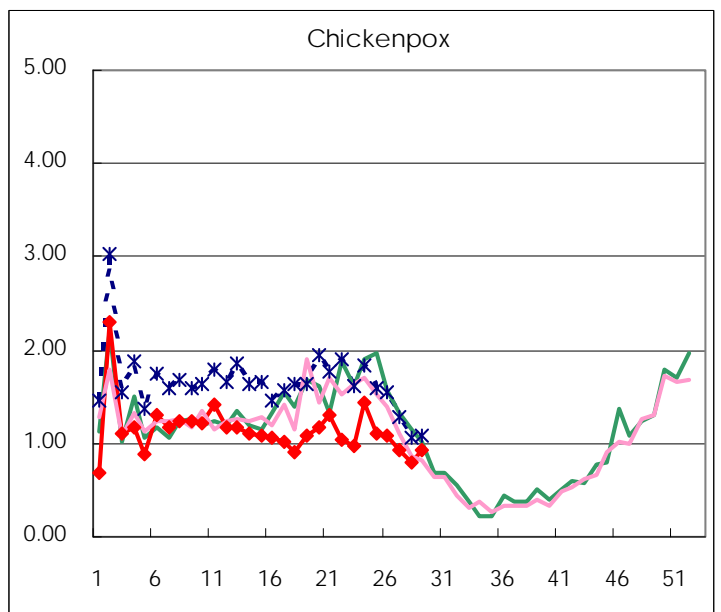
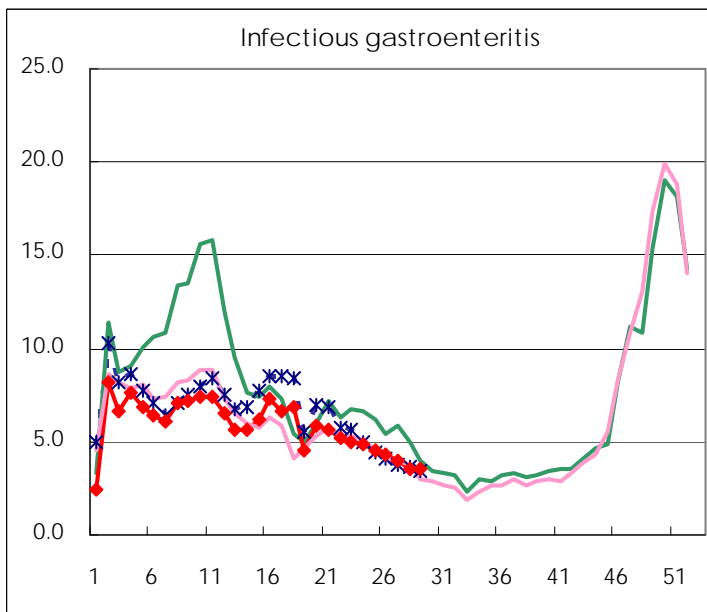
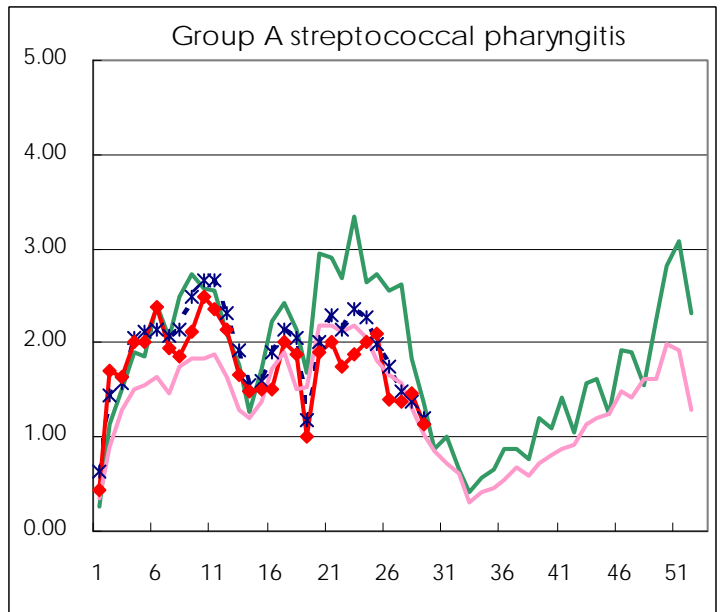
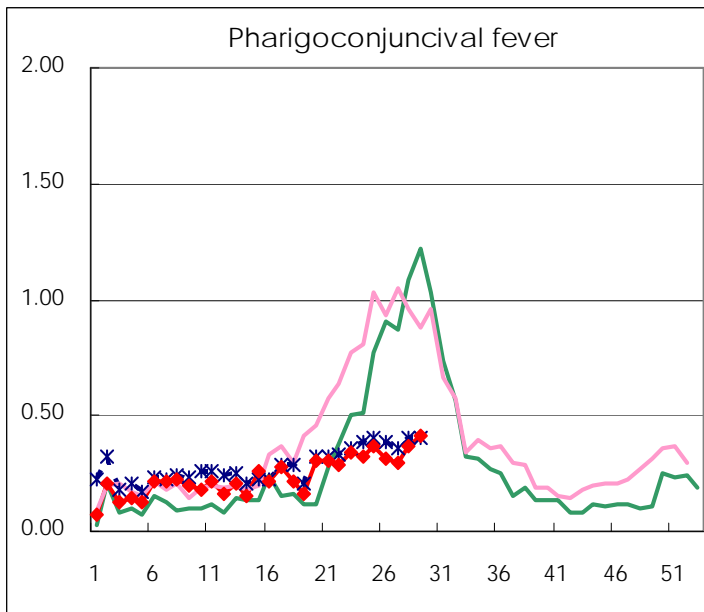
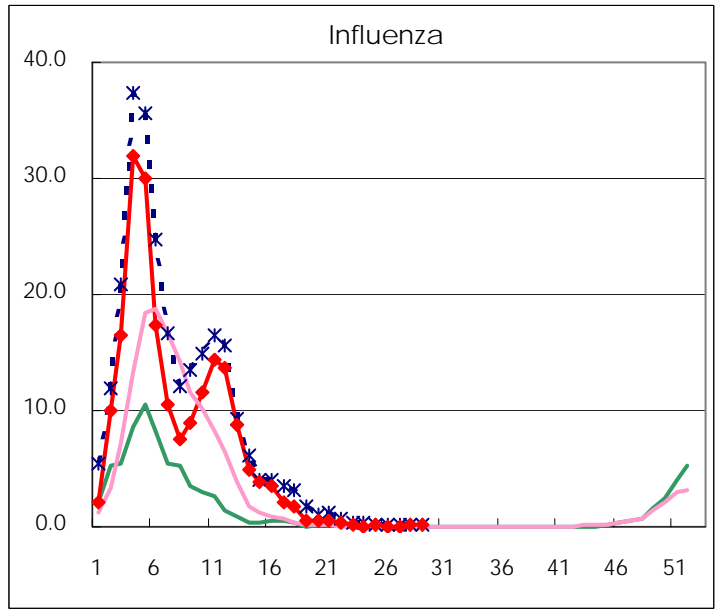
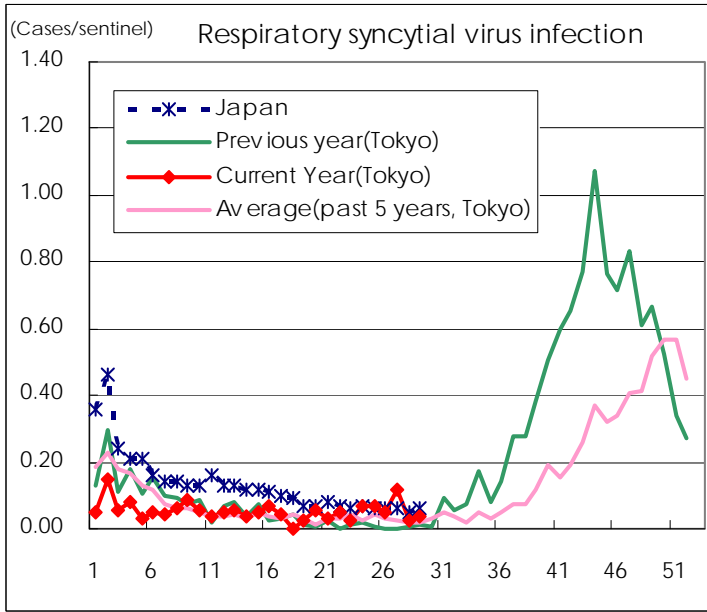
* laboratory confirmed cases

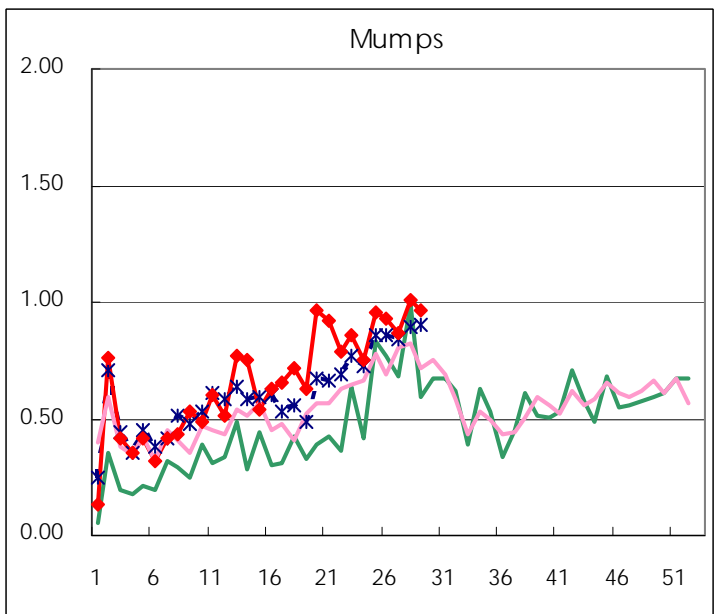
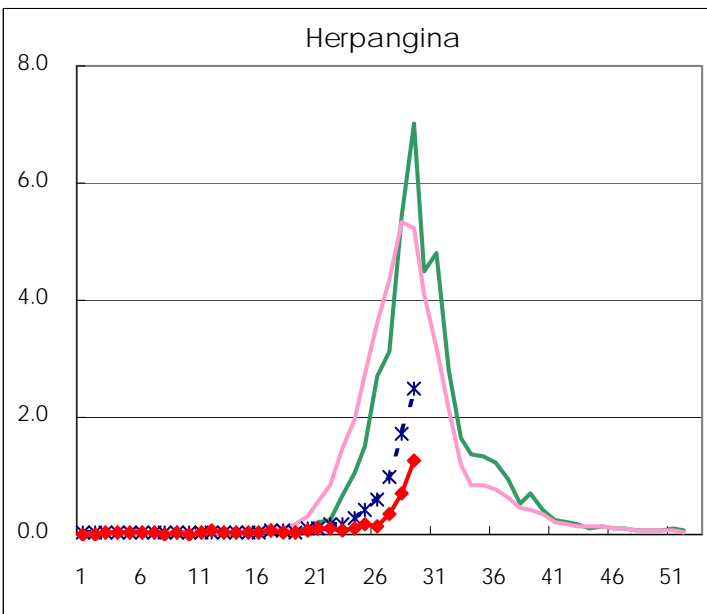
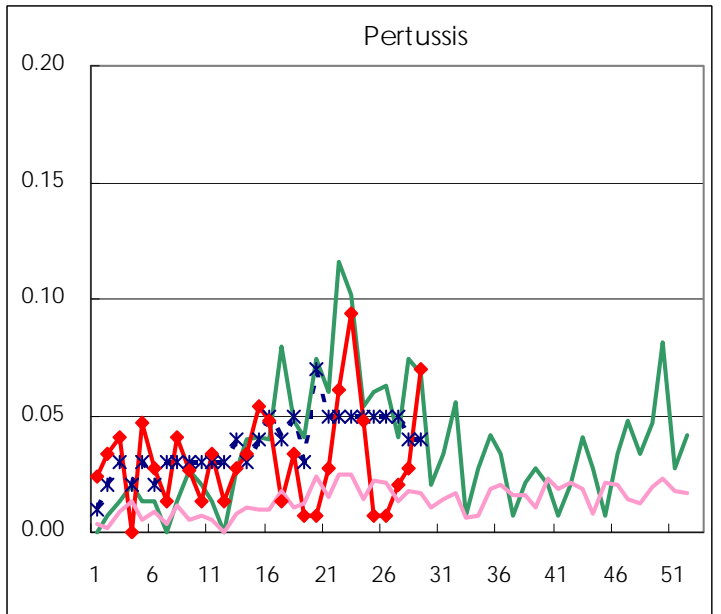
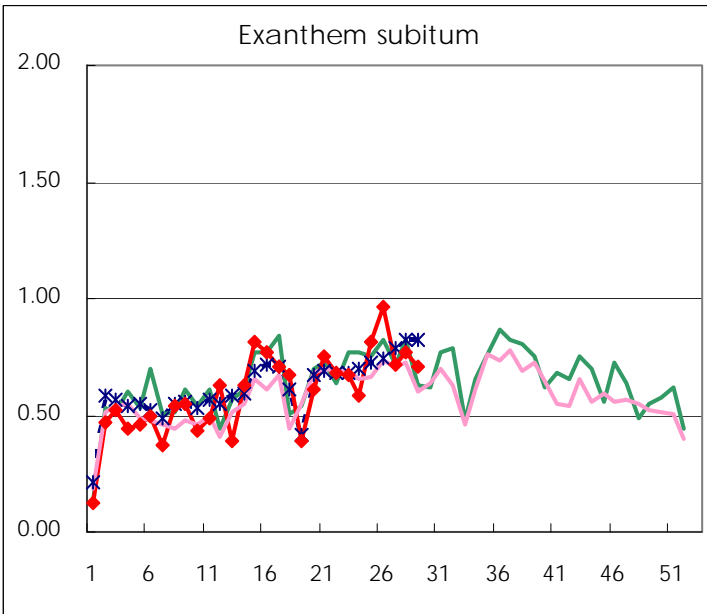
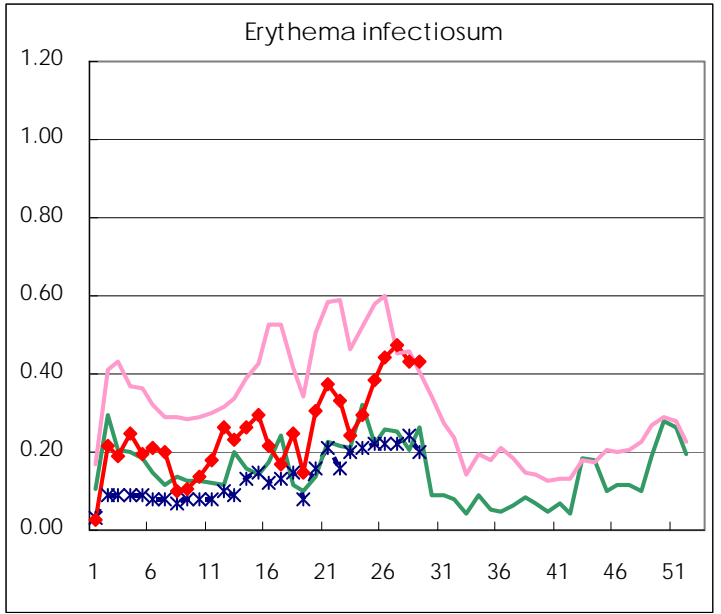
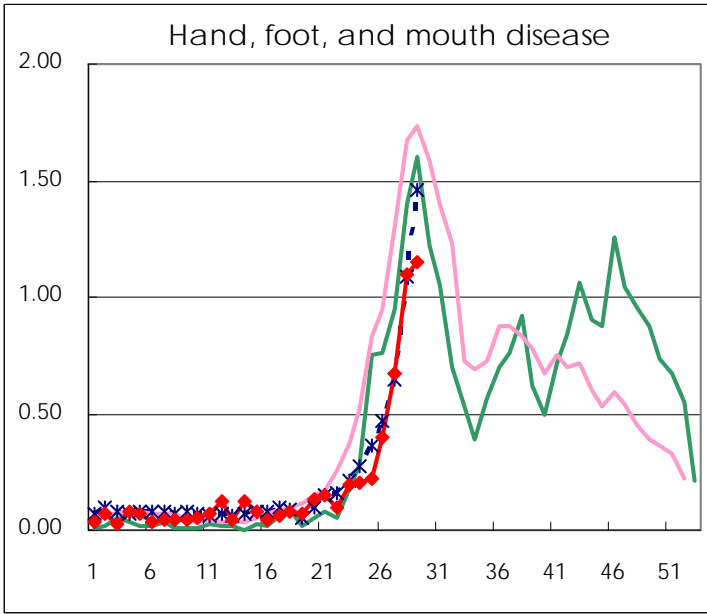
Number of patients with the diseases to be reported
by the designated clinics and hospitals

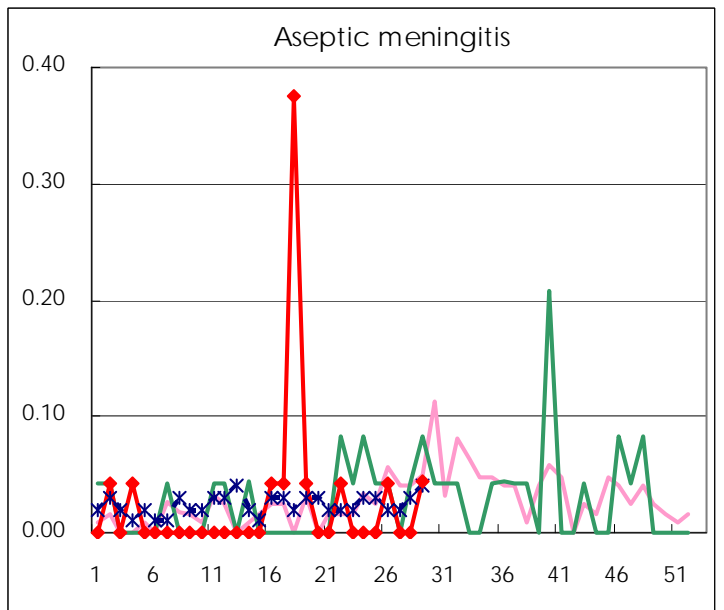
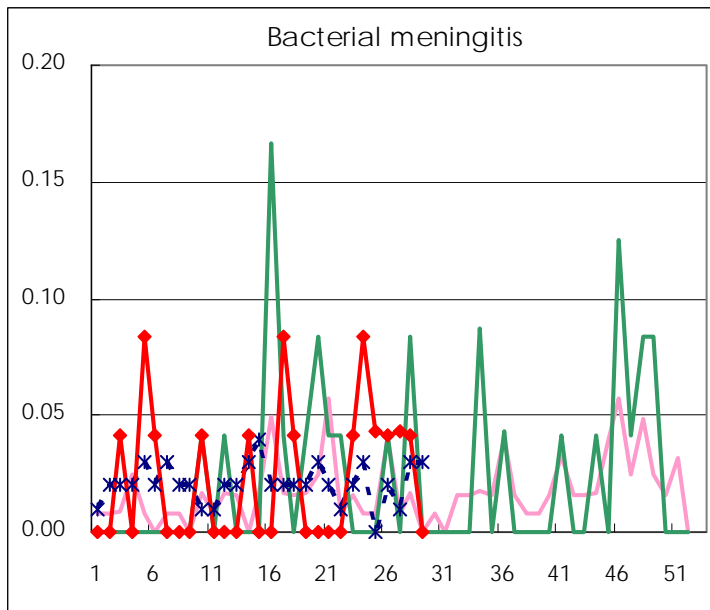
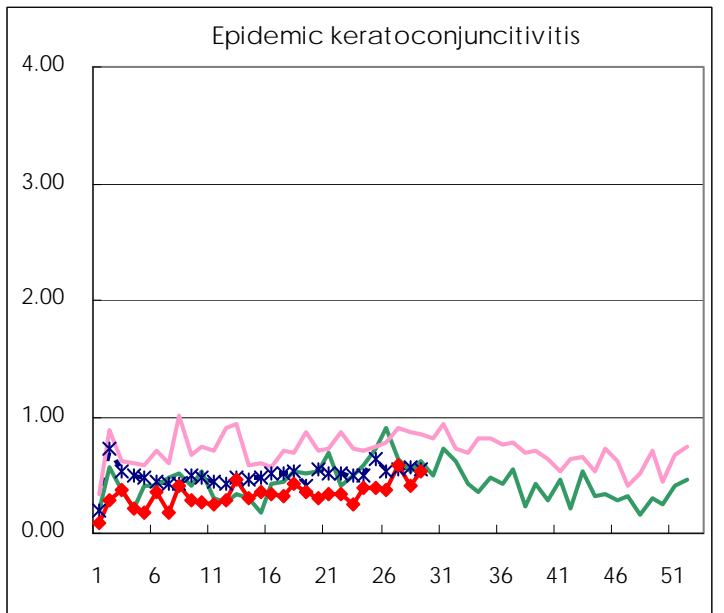
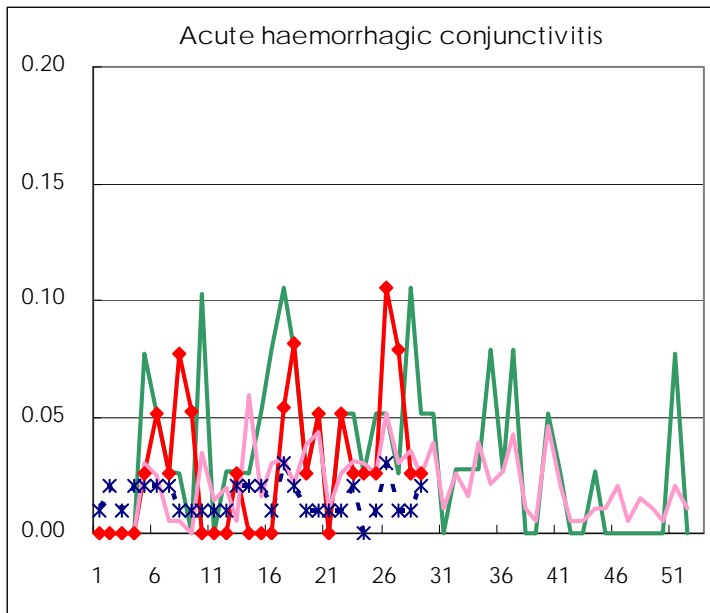
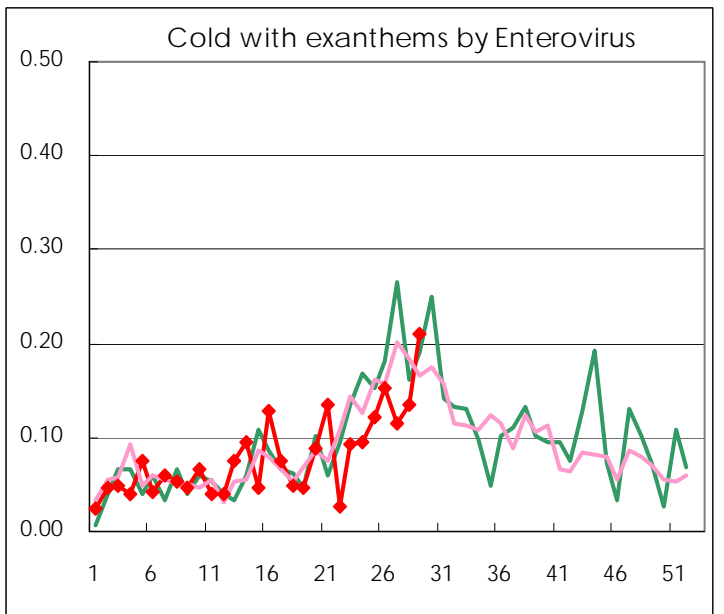
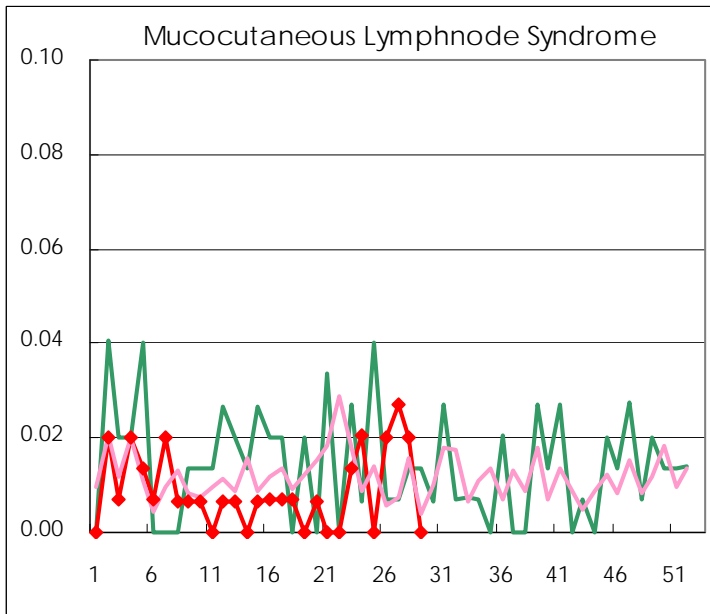
Diseases	2009				
	26th	27th	28th	29th	/sentinel
Respiratory syncytial virus infection	7	17	4	5	0.03
Pharyngoconjunctival fever	47	44	54	59	0.41
Group A streptococcal pharyngitis	209	203	218	162	1.13
Infectious gastroenteritis	653	590	525	505	3.53
Chickenpox	162	136	119	134	0.94
Hand, foot, and mouth disease	60	99	162	165	1.15
Erythema infectiosum	66	70	64	62	0.43
Exanthem subitum	145	105	114	101	0.71
Pertussis	1	3	4	10	0.07
Herpangina	22	51	105	182	1.27
Mumps	140	127	149	138	0.97
Cold with exanthems by Enterovirus	23	17	20	30	0.21
Mucocutaneous Lymphnode Syndrome	3	4	3		
Influenza	24	20	48	71	0.25
Acute hemorrhagic conjunctivitis	4	3	1	1	0.03
Epidemic keratoconjunctivitis	14	22	16	21	0.54
Bacterial meningitis	1	1	1		
Aseptic meningitis	1			1	0.04
Mycoplasma pneumonia	2	9	8	8	0.35
Chlamydial pneumonia (excluding psittacosis)	1	1		1	0.04

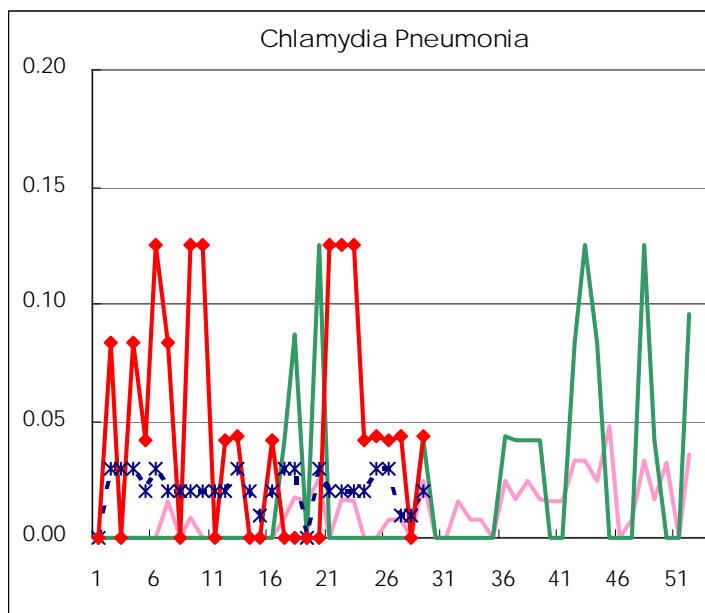
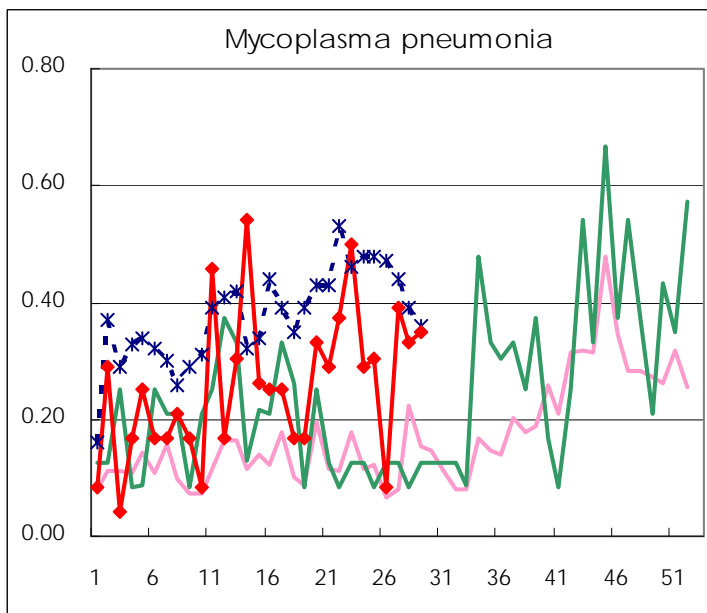
(Blank means 0.)

Disease Trend Graph (weekly reported cases per sentinel in comparison)









Number of sentinel facilities
for weekly reporting

Types of sentinels	Number of sentinels	Sentinels having reported
Pediatric	150	143
Influenza	290	280
Ophthalmic	39	39
Specially-designated	24	23

Tokyo Metropolitan Government
Infectious Disease Surveillance Center